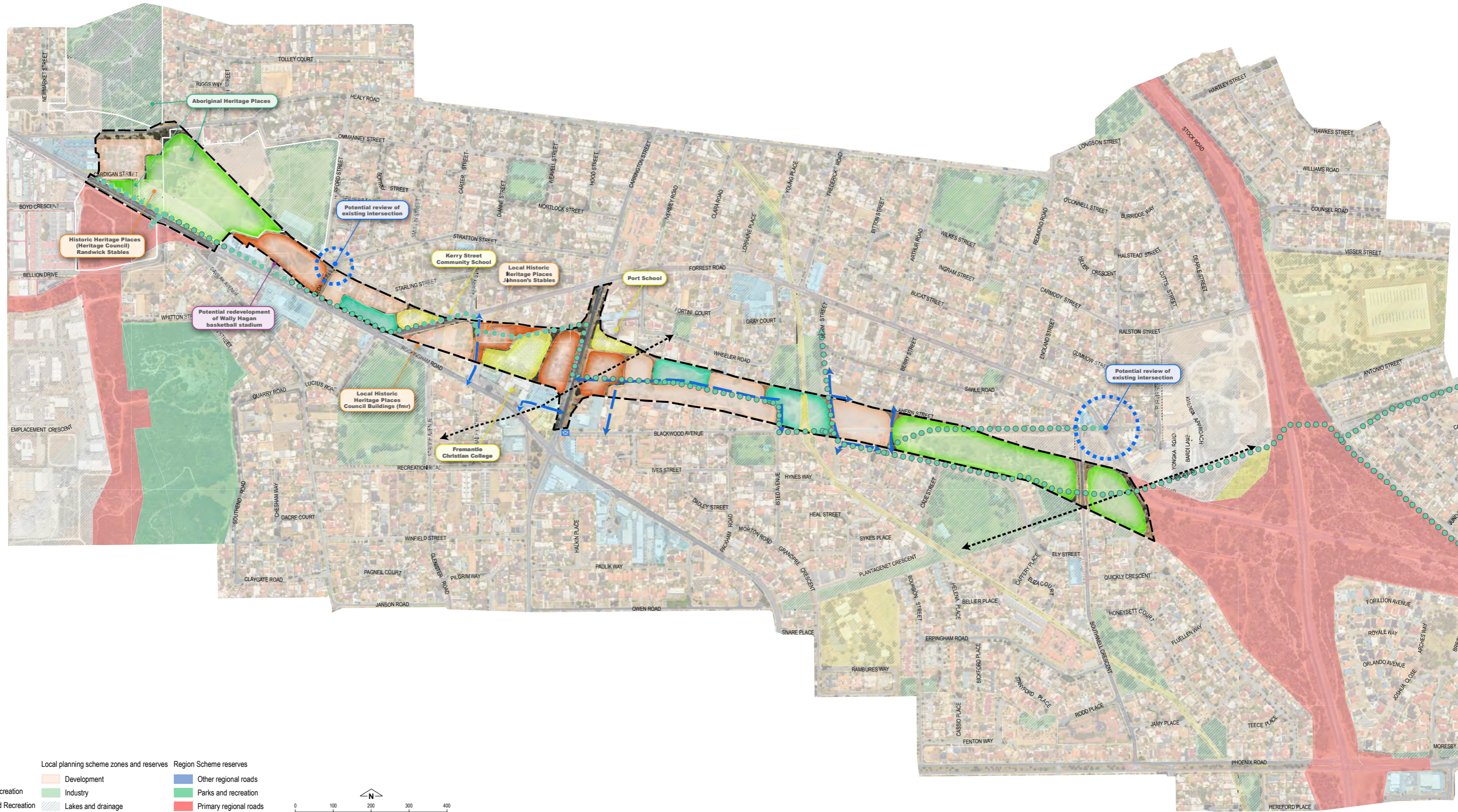


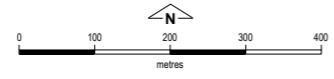


Indicative Concept Plan – Roe 9

This plan is not binding and has been prepared to convey some potential land use planning outcomes that could eventuate in due course.



- Study area
- Development Zone
- Local Parks and Recreation
- Public purpose
- Residential
- Indicative future road
- Possible cycle/pedestrian route*
- Overhead powerlines
- Development
- Industry
- Lakes and drainage
- Local centre
- Mixed business
- Parks and recreation/Open space
- Public purposes
- Residential
- Special use
- Other regional roads
- Parks and recreation
- Primary regional roads
- Public purposes - high school



Produced by Data Analytics,
Department of Planning, Lands and Heritage.
Copyright © March 2023

\\dopgifs\files\02\Products\Perth\Roe8Roe9\Land\Tenure\StrategicMap.aprx

Base information supplied by
Western Australian Land Information Authority
SLIP 1180-2020-1

2022 aerial imagery supplied by
Western Australian Land Information Authority
(Scale 1:25,000; positional accuracy +/- 2m)

* Indicative alignment only – more detailed planning and appropriate design criteria to be further considered at future stages of the planning process by the Department of Transport, in consultation with City of Cockburn.



Indicative Concept Plan - Roe 8 remainder

This plan is not binding and has been prepared to convey some potential land use planning outcomes that could eventuate in due course.



Legend

Study area	Development Zone	Local planning scheme zones and reserves	Region Scheme reserves
Proposed Parks and Recreation	Lakes and drainage	Development	Other regional roads
Possible cycle/pedestrian route*	Local centre	Industry	Parks and recreation
<small>* Indicative alignment only – more detailed planning and appropriate design criteria to be further considered at future stages of the planning process by the Department of Transport, in consultation with City of Cockburn.</small>	Mixed business	Lakes and drainage	Primary regional roads
	Parks and recreation/Open space	Local centre	
	Public purposes	Mixed business	
	Residential	Parks and recreation/Open space	
	Special use	Public purposes	

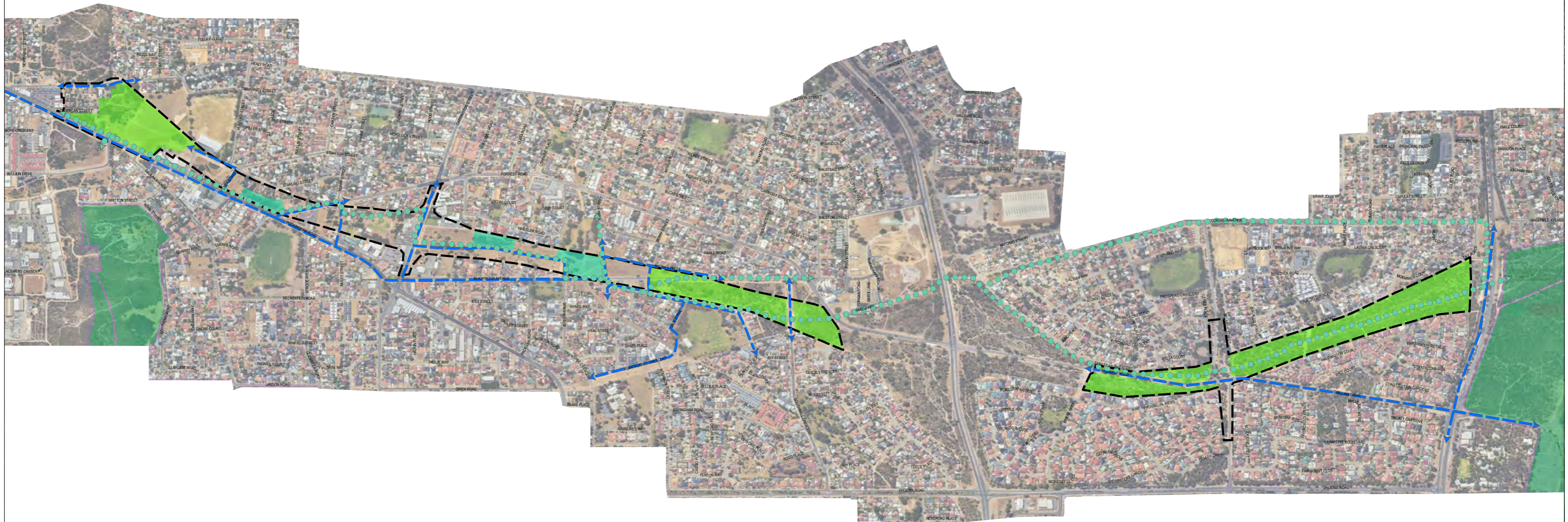
0 100 200 300 400 metres

Produced by Data Analytics, Department of Planning, Lands and Heritage. Copyright © March 2023
 \\dppgisfiles\rv2\Products\Perth\Roe8Roe9\LandTenure\StrategicMap.mxd
 Base information supplied by Western Australian Land Information Authority SLIP 1180-2020-1
 2022 aerial imagery supplied by Western Australian Land Information Authority (Scale 1:25,000; positional accuracy +/- 2m)



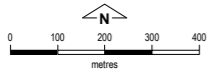
Potential Green Linkage - Roe 8 West and Roe 9

This plan is not binding and has been prepared to convey some potential land use planning outcomes that could eventuate in due course.



Legend

- Study area
- Proposed Regional reserve
- Proposed Local reserve
- Existing Region Scheme Reserve - Parks and recreation
- Potential Green Streets (Native vegetation featured within road reserves)
- Potential cycling path*



* Indicative alignment only - more detailed planning and appropriate design criteria to be further considered at future stages of the planning process by the Department of Transport, in consultation with City of Cockburn.

Produced by Data Analytics,
Department of Planning, Lands and Heritage.
Copyright © June 2023

\\dpgisfiles\02\Products\Perth\Roe8Roe9\LandTenure\IndicativeConceptPlan_Veg_20230223_A1L.mxd

Base information supplied by
Western Australian Land Information Authority
SLIP 1180-2020-1

2022 aerial imagery supplied by
Western Australian Land Information Authority
(Scale 1:25,000, positional accuracy +/- 2m)