

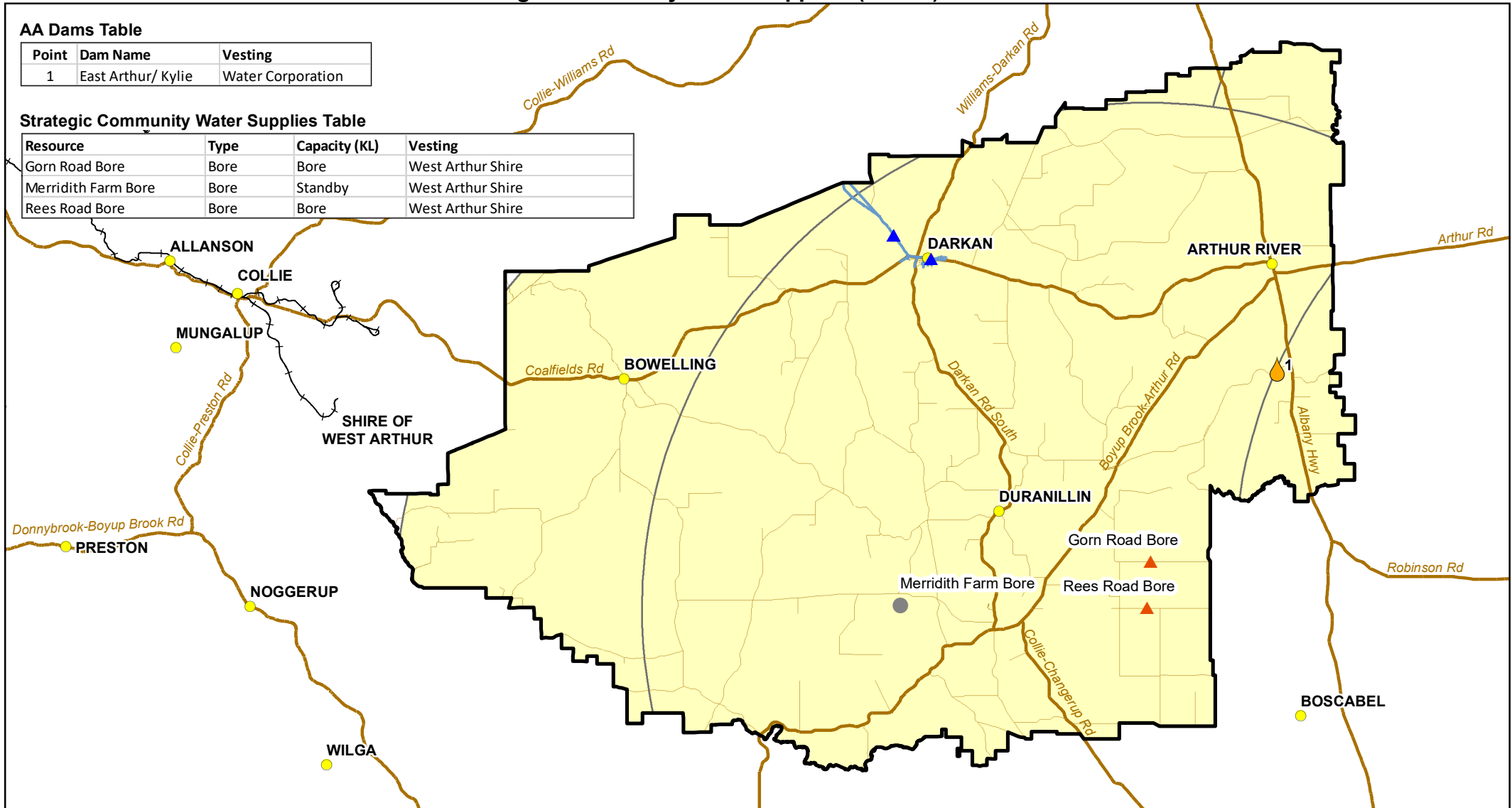
AA Dams & Strategic Community Water Supplies (SCWS) at West Arthur

AA Dams Table

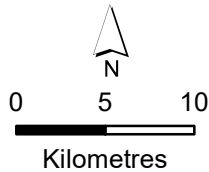
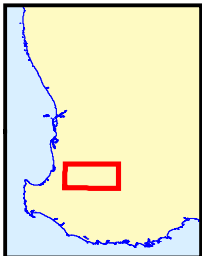
Point	Dam Name	Vesting
1	East Arthur/ Kylie	Water Corporation

Strategic Community Water Supplies Table

Resource	Type	Capacity (KL)	Vesting
Gorn Road Bore	Bore	Bore	West Arthur Shire
Merridith Farm Bore	Bore	Standby	West Arthur Shire
Rees Road Bore	Bore	Bore	West Arthur Shire



LOCALITY MAP



- Towns
- Main Roads
- Railway
- Water Corporation Pipes
- 40km Buffer
- Shire of West Arthur

Strategic Community Water Supplies

- ▲ Bore
- Small (less than 5,000 kL)
- Medium (5,000 to 10,000 kL)
- Large (more than 10,000 kL)
- Standby
- ▲ Watercorp standpipe

AA Dams

- DWER**
- High
 - Low
 - None
- Shire**
- High
 - Low
 - None

Watercorp

- High
 - Low
 - None
- Other**
- High
 - Low
 - None



Government of Western Australia
Department of Water and Environmental Regulation

Project Information

Client: Sandy Turton-Parkinson
Map Author: G. Paul
Filename: EFWRPShireOfWestArthur.mxd
Compilation date: 12/04/2022
Coordinate System: GDA 1994 MGA Zone 50

While the Department has made reasonable efforts to ensure the accuracy of this data, the department accepts no responsibility for any inaccuracies and persons relying on this data do so at their own risk.