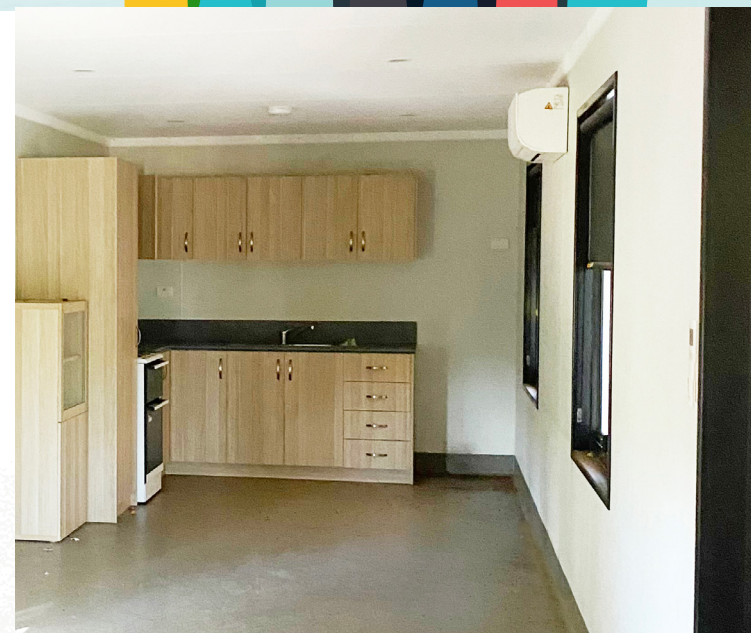




Temporary Accommodation Units (TAUs)

Modules available for the Kimberley



Temporary Accommodation Units (TAUs)

A Registration of Interest process is underway for local businesses, service providers, government agencies, community organisations and residents who may be interested in obtaining amenities, decking and self-contained modules that were used to help the community recover from the floods.

For more information, please visit the Temporary Accommodation Unit - Registration of Interest page on WA.gov.au or scan the QR code below.



Or email: KimberleymodulesROI@communities.wa.gov.au

The ROI process is **open from 16 May 2025** and **closes on 25 July 2025**.

