



Government of **Western Australia**
Department of **Communities**



Temporary Accommodation Unit Future Use Project

Registration of Interest

Guide for Respondents





Contents

| | |
|----------------------------|----|
| Background | 3 |
| Eligibility | 4 |
| Amenities Modules | 5 |
| Decking / Verandah Modules | 6 |
| Self-Contained Modules | 7 |
| 3 Bedroom Modules | 8 |
| Photos for Information | 9 |
| Frequently Asked Questions | 12 |



Background

In mid-to-late 2023, the Department of Communities (Communities) delivered 47 Temporary Accommodation Units (TAUs) across eight Fitzroy Valley communities, to provide temporary accommodation on country to people displaced by the devastating flood while their long-term homes were repaired or rebuilt. The TAUs were established as temporary housing only. They cannot remain where they are as the TAUs are not suitable for permanent housing.

These TAUs are made up of a total of 150 modules comprising of four different types of module:

- Amenities modules
- Decking/verandah modules
- Self-contained modules
- 3 bedroom x 1 bathroom modules

Local residents, businesses, community organisations and government agencies operating in the region are invited to register their interest in acquiring the vacated TAU modules to support and enhance their service delivery outcomes. Any local and state government agencies interested in obtaining a TAU module will be required to respond to the ROI process, including divisions within Communities, to ensure an equitable and transparent process.

The ROI process will support the valuable work of organisations and agencies in the Fitzroy Valley and the wider Kimberley region to provide temporary accommodation and/or facility space solutions to further enhance service delivery outcomes.

The ROI process is a demand mapping exercise and will enable options analysis regarding future use of the TAU modules to be undertaken.

This ROI Guide provides respondents with information that may assist in completion of their ROI including:

- The types of modules (amenities, decking/verandah, self-contained)
- Example of potential use
- Number of modules available and their status (used or unused)
- Dimensions of modules
- Discounted rate – the cost to obtain the modules which is up to 60% less than the original purchase cost incurred by Government.

The ROI process is open from 16 May 2025 and closes on 25 July 2025.



Eligibility

To register your interest, you must meet at least one of the following eligibility requirements:

- **Respondent Type:**
 - Be a member of a remote or town based Aboriginal community.
 - A business operating in the Kimberley.
 - A service provider and/or Non-Governmental Organisation.
 - A local or state government agency.
 - Individuals living or working in the Kimberley.
- **End location of TAU Module(s):** the location where the module(s) will be used must be located within the Kimberley.
- **Land Tenure:** TAU modules must be located on land owned or controlled by the Respondent, or Respondent has existing permission from individual / organisation responsible for managing the land.
- **Intended Use:** Intended use of the TAU module(s) must not be for permanent housing. Potential uses of the TAU modules include office space or temporary accommodation such as backpacker accommodation, workers accommodation or short stay units to support services offering emergency accommodation.

How to Register your Interest

The ROI process is available on the [Department of Communities](#) website.

Hard copy forms can also be downloaded and submitted via:

Email to: kimberleymodulesroi@communities.wa.gov.au

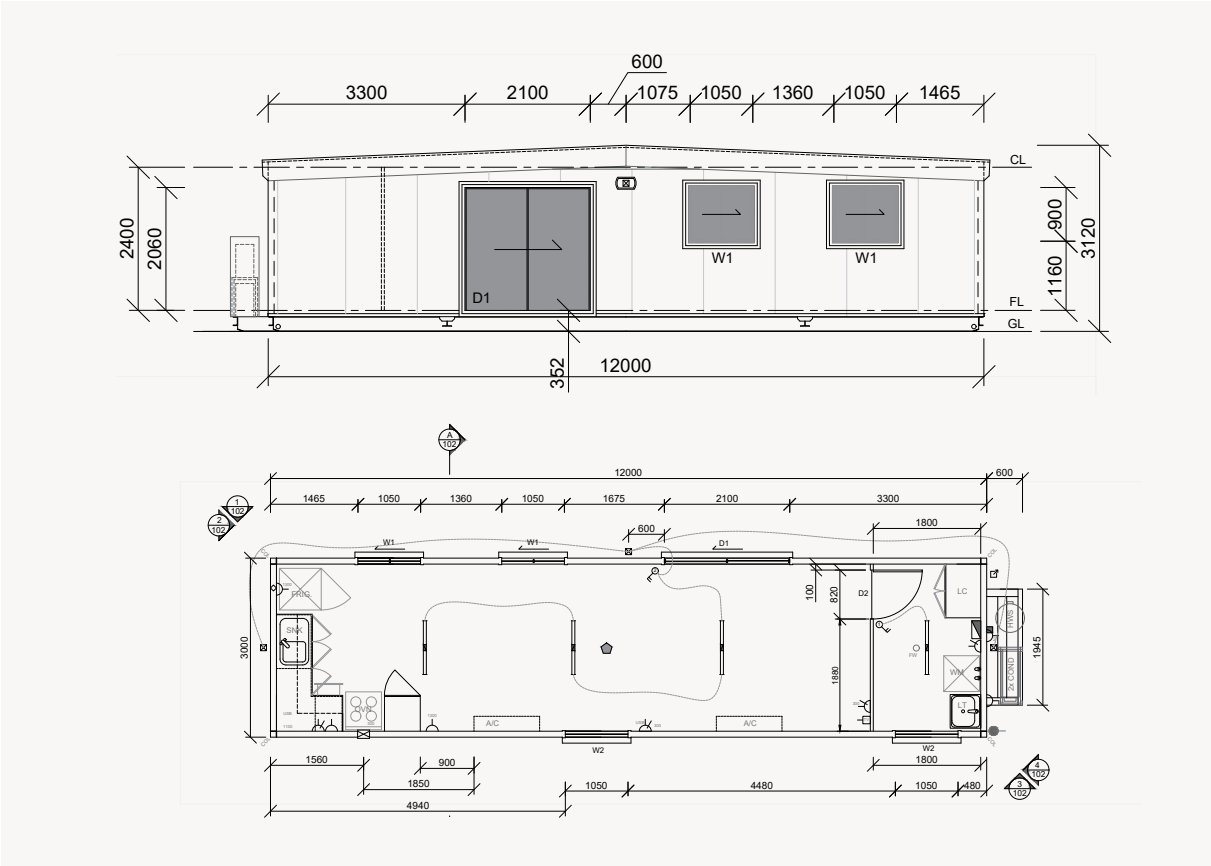
Post to: Attention: Ben Foley
Locked Bag 5000
Fremantle WA 6959



Amenities Modules

The Amenities modules comprise of a kitchen, dining area and laundry. They do not contain a bathroom.

Plans



Approximate Dimensions

| | |
|---------|------------|
| Width: | 3 metres |
| Length: | 12 metres |
| Height: | 3.1 metres |

Approximate Number Available

| | |
|---------|----|
| Used: | 37 |
| Unused: | 3 |

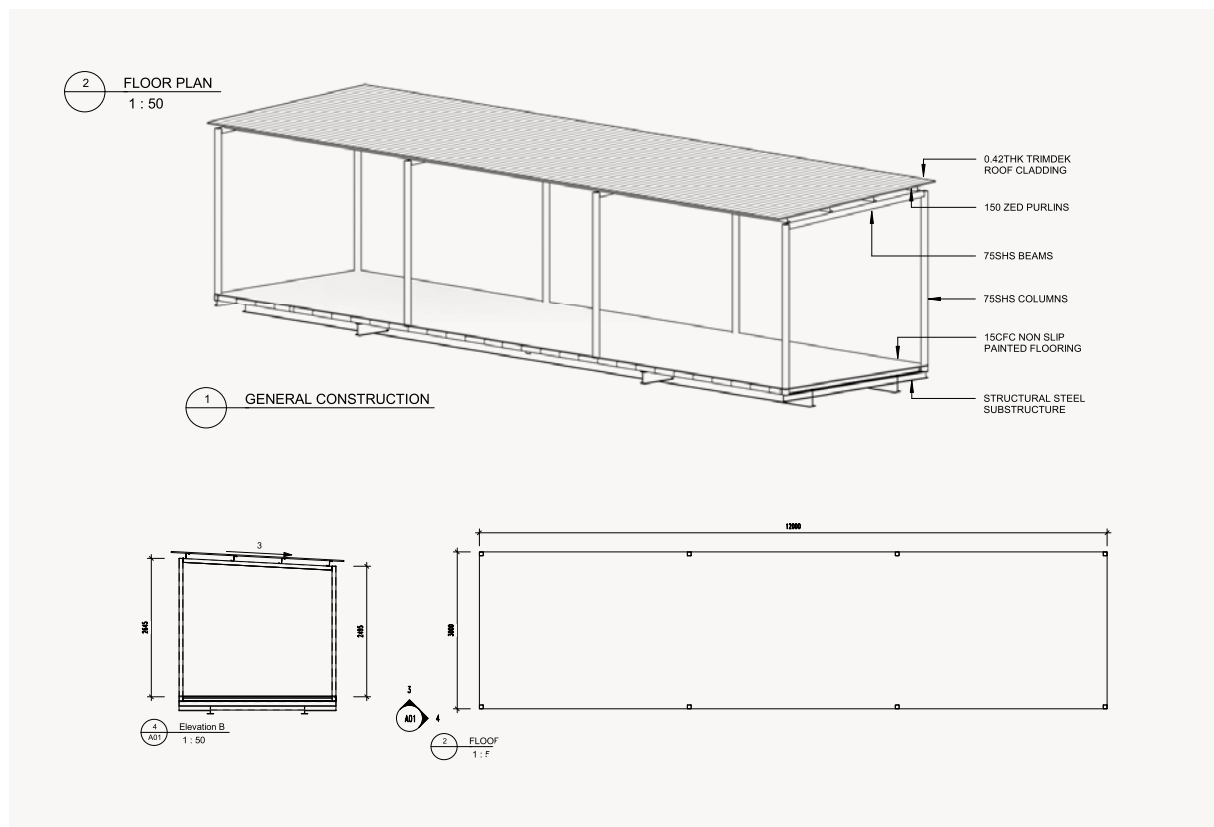
Approximate Discounted Rate to Purchase

| | |
|---------|----------|
| Used: | \$40,569 |
| Unused: | \$68,902 |



Decking / Verandah Modules

The decking / verandah modules can be used as central module to connect other module types or as a separate deck with verandah.



Approximate Dimensions

| | Type 1 | Type 2 |
|---------|------------|------------|
| Width: | 3 metres | 3 metres |
| Length: | 6 metres | 12 metres |
| Height: | 2.7 metres | 2.7 metres |

Approximate Number Available

| | |
|---------|----|
| Used: | 47 |
| Unused: | 3 |

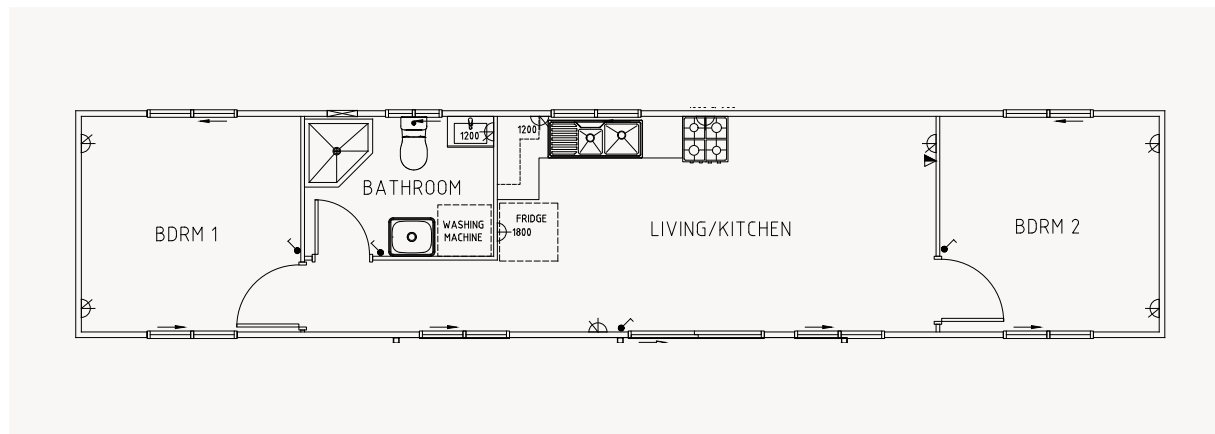
Approximate Discounted Rate to Purchase

| | |
|---------|-----------|
| Used: | \$16,971 |
| Unused: | \$ 28,823 |



Self-Contained Modules

The self-contained modules comprise of 2 bedrooms and 1 bathroom. These modules are not suitable for permanent accommodation but could be used as temporary accommodation or workers accommodation.



Approximate Dimensions

| | |
|---------|-------------|
| Width: | 3 metres |
| Length: | 14.4 metres |
| Height: | 3.1 metres |

Approximate Number Available

2 - Bedroom

| | |
|--------|----|
| Used: | 10 |
| Unused | 6 |

Approximate Discounted Rate to Purchase

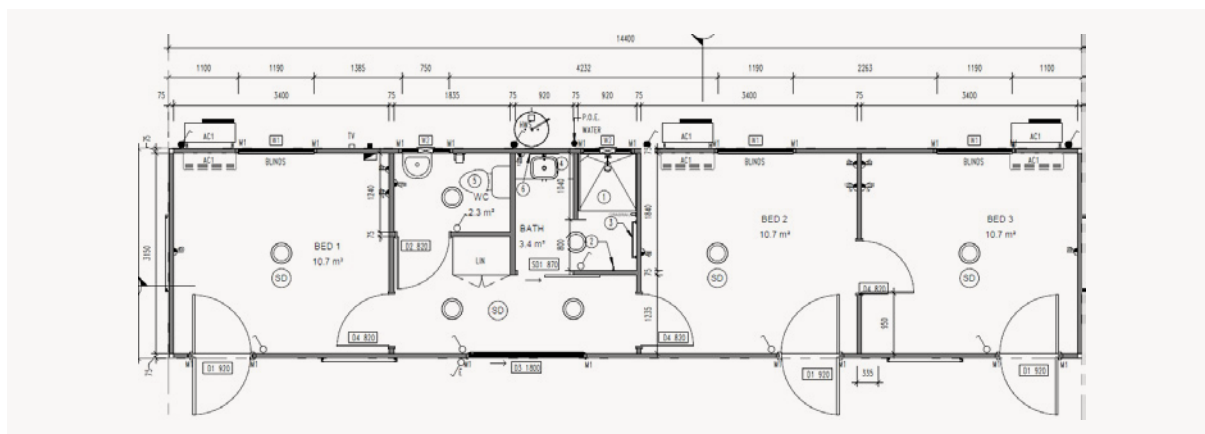
2 - Bedroom

| | |
|--------|----------|
| Used: | \$51,969 |
| Unused | \$88,264 |



3 Bedroom Modules

These modules comprise of 2 bedrooms and 1 bathroom. These modules are not suitable for long-term accommodation but could be used as temporary accommodation or workers accommodation.



Approximate Dimensions

| | |
|---------|-------------|
| Width: | 3.3 metres |
| Length: | 14.4 metres |
| Height: | 3.1 metres |

Approximate Number Available

| | |
|--------|---|
| Used: | 0 |
| Unused | 4 |

Approximate Discounted Rate to Purchase

| | |
|--------|----------|
| Used: | N/A |
| Unused | \$84,838 |



Photos for Information

Photos are for illustration only. Modules may not contain fixtures or fittings as shown.

Amenities Modules



Decking / Verandah Modules





Self Contained Modules



External View of Modules





External View of Modules





Frequently Asked Questions

Who can submit their interest in the TAU modules?

The Registration of Interest (ROI) process is open to all local businesses, communities, service providers (including government agencies) and individuals operating or living in the Kimberley.

How can I apply for a TAU module?

The ROI process is available on the State Government's website [here](#). Hard copy forms will also be available at the Shire of Derby / West Kimberley office or Communities' regional housing offices.

Which Region is this ROI Process applicable to?

The ROI is for the Kimberley Region only, however preference will be given to respondents in the Fitzroy Valley.

How many TAUs are available as part of this process? What are these modules comprised of?

Up to a maximum of 110 modules are available as part of this ROI process, comprising of amenities modules, self-contained modules, and decking/verandah modules.

Can I use a TAU for permanent housing if I am successful in securing one?

No. TAUs are temporary-accommodation only and are not compliant or suitable as permanent housing options.

What are some examples of temporary accommodation that the modules could be used for?

The modules could be used as temporary accommodation such as backpacker accommodation, workers accommodation or short stay units to support services offering emergency accommodation.

Where can I put the TAU if I am successful in securing one following the ROI process? Do I need to own the land?

TAU modules must be located on land owned or controlled by the Respondent, or with confirmed permission from the individual/ organisation responsible for managing the land.

How much has been spent on these TAUs by the State Government?

The State Government has invested over \$155 million via the Department of Communities to deliver the Kimberley Flood Recovery (KFR) program and provide temporary accommodation on country to displaced residents. This funding also included the repair and rebuilding of over 170 assets comprising residential homes, residential outbuildings and other non-residential assets.

What's happening with the TAUs once people move back to their long-term homes and leave them vacant?

All TAU modules will be transported to secure storage as they become vacant while their future use is determined.



What TAU modules will be available through the ROI?

These 110 TAU modules that will be available as part of this process include amenities modules, decking/verandah modules and self-contained modules. The Amenities modules comprise of a kitchen, dining area and laundry. They do not contain a bathroom. A suggested use for these modules is as an office. The decking / verandah modules can be used as central module to connect other module types or as a separate deck with verandah. The self-contained modules comprise of 2 or 3 bedrooms and 1 bathroom. These modules are not suitable for permanent accommodation but could be used as temporary accommodation or workers accommodation. A ROI Guide has been developed to provide respondents to the ROI with more information.

How will the TAUs get where I need them to be?

As the TAUs are vacated, they are secured and disconnected from services. The TAU modules are being transported to secure storage. Respondents will need to be able to transfer modules from their current location (within Fitzroy Valley) and install at their intended location within the Kimberley at their own cost, and will also be required to pay for ongoing costs associated with their upkeep.

Will there be a cost for the modules?

A discounted rate has been applied to enable the potential cost to obtain the modules being up to 60% less than the original purchase cost incurred by government. Please refer to the ROI Guide for the discounted rate for each module type, either used or unused. Respondents are requested to provide detail on whether or not they have capacity to purchase the modules.

If I am living in a TAU, what does this mean for me?

All TAUs are required to be vacated by 30 June 2026. However, when the works on your long-term home are completed, you will be supported to return to your home. Communities is working directly with individuals who do not have a long-term home to return to, to identify potential housing options. If you have any concerns please contact the Department of Communities' Regional Housing team at broome@communities.wa.gov.au.

When do I need to respond to the ROI by?

The ROI process is open from 16 May 2025 and closes on 25 July 2025. All submissions including postal submissions must be received by this date.