

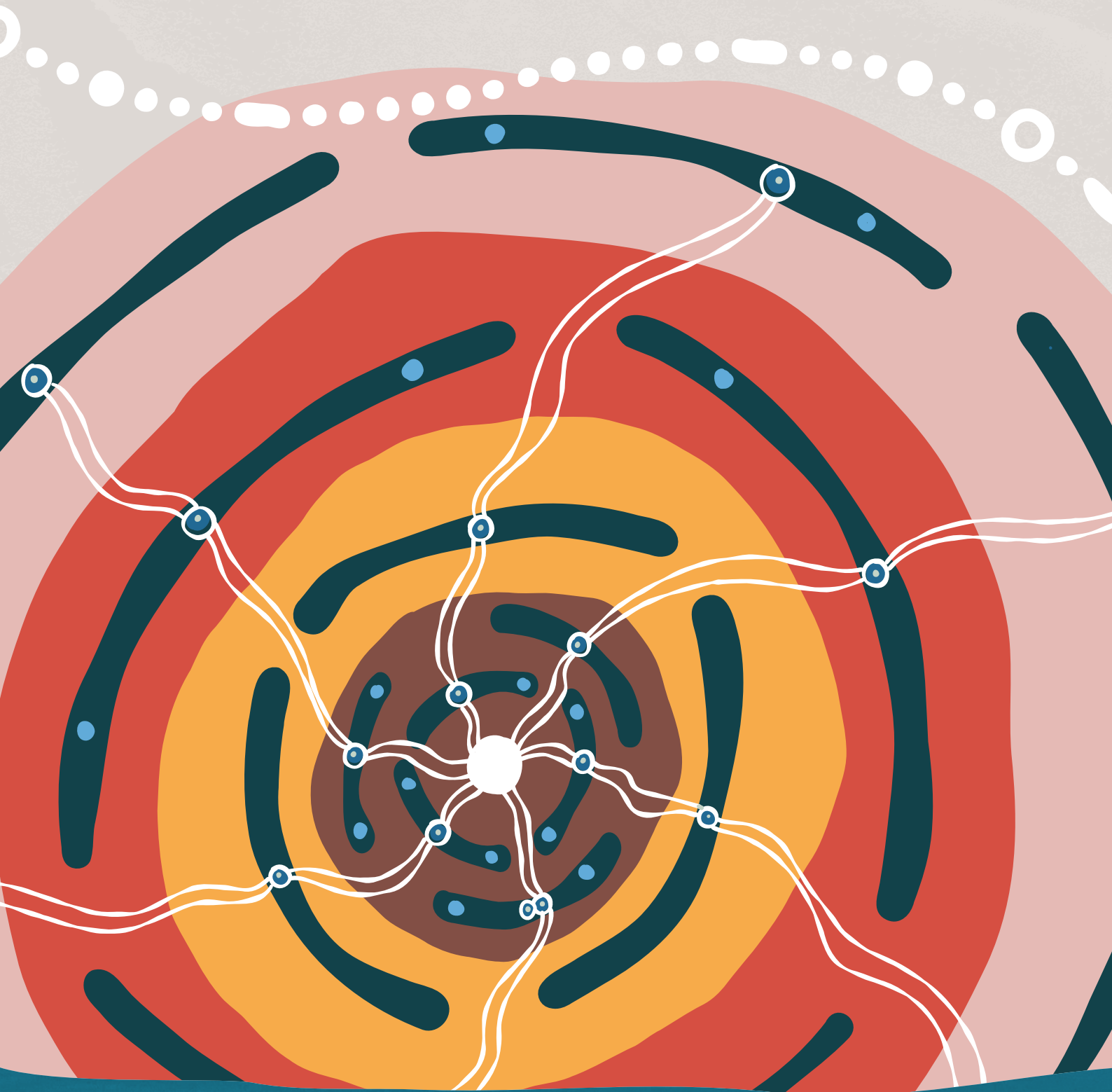


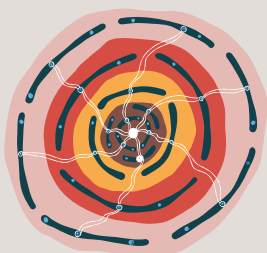
Government of **Western Australia**
Department of **Communities**



WA Out of Home Care (OOHC)

Outcomes Framework

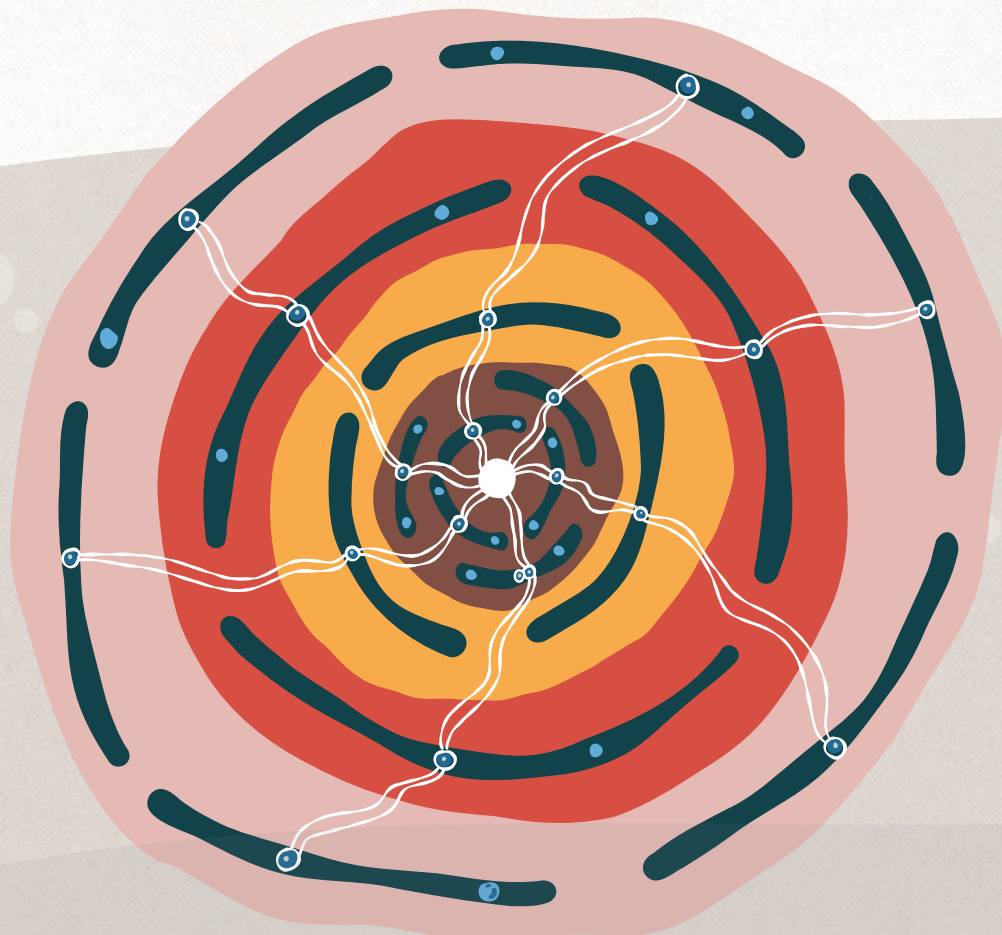




A depiction of the structure of the OOHC Outcomes Framework.
Credit: Katja Gvozdenovic, Director, Kaala Barna Aboriginal Consultancy.

Vision

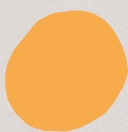
All children and young people in Out of Home Care experience safe, nurturing and culturally-responsive care that supports them to have meaningful relationships with their family, community, and care givers, and empowers them to heal, develop a strong sense of identity, and reach their full potential.



Domains



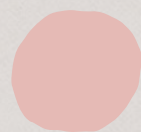
Children and
Young People



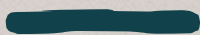
Family, Kin
and Community



Service Providers
and Carers



System



Outcomes



Indicators



Cultural approach



A cultural approach is critical to the success of the services reform program. Every outcome has specific indicators which measure progress against outcomes through a cultural approach.

Domain 1

Children and Young People

Children and young people in Out of Home Care reach their full potential by growing up safe and supported, free from harm and neglect, and able to heal from the impacts of intergenerational trauma.

Outcome 1

Children and young people in Out of Home Care **have equitable access to services and supports** that are protective, individualised, high-quality and culturally safe.



Outcome 2

Children and young people in Out of Home Care have their voices heard and can inform decisions that affect them.



Outcome 3

Children and young people in Out of Home Care are safe, secure, and free from harm, violence, abuse and neglect.



Outcome 4

Children and young people in Out of Home Care are physically, culturally, mentally, socially and emotionally healthy and well.



Outcome 5

Children and young people in Out of Home Care have a strong sense of identity, and are connected to their culture.



Outcome 6

Children and young people in Out of Home Care learn and develop, and are supported to engage with education and training.



Domain 2

Family, Kin and Community

Families, kin and communities are empowered to be involved in their children and young people's lives and supported to provide safe environments for their children.

Outcome 7

Children and young people in Out of Home Care grow up with safe and sustainable connections to their sibling groups, families, kin and communities.



Outcome 8

Families, kin and communities are holistically supported to provide safe and nurturing homes for their children and young people in Out of Home Care.



Outcome 9

Families, kin and communities have their voices heard and inform care decision-making for their children in Out of Home Care, and participate in policy and service design.




Key


Outcomes in this framework have been developed to align with other key State and Australian Government strategies and plans. In some cases alignment may be word-for-word, while in other it may be in intent.

 Safe and Supported

 Aboriginal Empowerment Strategy

 State Commissioning Strategy for Community Services

 Safe and Supported: Aboriginal and Torres Strait Islander First Action Plan

 Closing the Gap

 Community Services Outcomes Measurement Framework

Domain 3

Service Providers and Carers

Service providers and carers have the skills, capabilities and resources to deliver Out of Home Care services that meet the needs of children and young people.

Outcome 10

Out of Home Care delivered by service providers and carers is trauma-informed, culturally safe, and centred around the needs of an individual child.



Outcome 11

Service provider staff and carers have the capabilities, capacity, and are supported to meet the needs of children and young people in Out of Home Care.



Outcome 12

There is a strong and sustainable ACCO sector delivering high quality services to meet the needs of Aboriginal people in Out of Home Care.



Domain 4

System

The system is designed and operates to enable the delivery of high-quality services for all children and young people in Out of Home Care.

Outcome 13

The design of Out of Home Care system and service models are evidence informed, based on cultural and OOHC best practices and reliable quantitative and qualitative data.



Outcome 14

The Out of Home Care system enables place-based and community-informed responses, delivered by local service providers and coordinated collaboration among local stakeholders.



Outcome 15

The system has sufficient resources, including funding and workforce, to be responsive and flexible, and meet care needs of all children requiring Out of Home Care.



Outcome 16

The system supports integrated and collaborative approaches to Out of Home Care which embed trust, partnership and care coordination between agencies and service providers.



Outcome 17

There is shared accountability across the system for services delivered to children and young people and their outcomes, including through system-wide monitoring, evaluation and learning.






Outcome 18

The system achieves equitable experiences and outcomes for children and young people regardless of where they live or who the service provider is.



Key

Outcomes in this framework have been developed to align with other key State and Australian Government strategies and plans. In some cases alignment may be word-for-word, while in other it may be in intent.

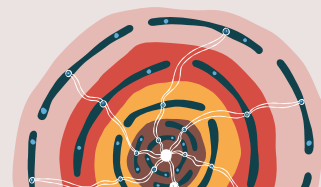
-  Safe and Supported
-  Aboriginal Empowerment Strategy
-  State Commissioning Strategy for Community Services

-  Safe and Supported: Aboriginal and Torres Strait Islander First Action Plan
-  Closing the Gap
-  Community Services Outcomes Measurement Framework



Domain 1

Children and Young People



Outcome 1

Children and young people in Out of Home Care have equitable access to services and supports that are protective, individualised, high-quality and culturally safe.

Indicators	Measures	Source
1.1 Improved access to culturally safe ¹ services	1.1.1 The proportion of Aboriginal children and young people in care arrangements who have access to culturally safe services, and the average wait time for these services.	Service providers (via the reporting tool)
1.2 Improved individualisation of care and services	1.2.1 The proportion of children and young people who have a current and complete documented care plan, and the key stakeholders who had input into the care plan.	Communities (care planning data)
1.3 Improved access to quality care and services	1.3.1 The proportion of children and young people who report that they receive the services and supports which they need.	Child survey (via Viewpoint)
	1.3.2 The proportion of children and young people who accessed care and services they needed as identified in their CASC Plan, and if not, the challenges providers have faced supporting children and young people to access services.	Service providers (via the reporting tool)

Outcome 2

Children and young people in Out of Home Care have their voices heard and can inform decisions that affect them.

Indicators	Measures	Source
2.1 Improved inclusion of Aboriginal perspectives in decision-making	2.1.1 The proportion of Aboriginal children and young people who report that they have opportunities to have a say, and were supported to have a say, in relation to decisions that have an impact on their lives.	Child survey (via Viewpoint)
	2.1.2 The proportion of care arrangements for Aboriginal children and young people delivered by ACCOs.	Communities (ASSIST)
2.2 Improved opportunity of children and young people to be involved in decision-making	2.2.1 See measure 2.1.1 – The proportion of children and young people who report that they have opportunities to have a say, and were supported to have a say, in relation to decisions that have an impact on their lives.	Child survey (via Viewpoint)

¹ Definition provided in glossary

Outcome 3

Children and young people in Out of Home Care are safe, secure, and free from harm, violence, abuse and neglect.


Indicators	Measures	Source
3.1 Improved cultural safety of care arrangements	3.1.1 The proportion of care arrangements that are aligned with the Aboriginal and Torres Strait Islander Child Placement Principle.	Communities (ATSICPP reporting)
	3.1.2 See measure 2.1.2 – The proportion of care arrangements for Aboriginal children and young people delivered by ACCOs.	Communities (ASSIST)
3.2 Improved stability of appropriate care arrangements	3.2.1 The average number of living arrangements for children and young people in OOHC in the past 12 months. ²	Communities (ASSIST)
	3.2.2 The average number of living arrangements for children and young people in OOHC.	Communities (ASSIST)
3.3 Improved safety and security of children and young people	3.3.1 The proportion of children and young people in OOHC who report feeling safe and secure in their current care arrangement.	Child survey (via Viewpoint)
	3.3.2 The number of critical incidents, standard of care concerns and/or reportable conduct investigations during the term of a care arrangement, and average time taken to investigate and resolve.	Communities (ASSIST)

Notes

² Note that interpretation of trends for this measure should consider possible contexts in practice, including that children and young people may have multiple living arrangements in a given period that has led to a more stable living arrangement at a point in time.


Outcome 4

Children and young people in Out of Home Care are physically, culturally, mentally, socially and emotionally healthy and well.

Indicators	Measures	Source
 4.1 Improved access to culturally safe health services including services that focus on social and emotional wellbeing	4.1.1 How many Aboriginal children and young people in care arrangements managed by your organisation accessed culturally safe health services?	Service providers (via the reporting tool)
4.2 Improved understanding of physical, social and emotional health and wellbeing needs	4.2.1 The proportion of children and young people who have an initial health check of their physical, developmental, psychosocial and mental health needs within 3 months of entering OOHC.	Communities (ASSIST)
4.3 Improved cultural health and wellbeing	4.3.1 The proportion of children and young people who have access to activities to support their cultural needs.	Communities (cultural support plans) and Viewpoint
4.4 Improved health and mental health	4.4.1 The proportion of children and young people who accessed a doctor or mental health professional to support their health needs where needed.	Communities (ASSIST)


Outcome 5

Children and young people in Out of Home Care have a strong sense of identity, and are connected to their culture.

Indicators	Measures	Source
 5.1 Improved cultural connection	5.1.1 The proportion of Aboriginal children and young people in OOHC who have a current documented and approved cultural support plan (developed within 12 months), and the proportion which were developed with the input of family members, ACCOs, other significant people to the child and/or the child.	Communities (cultural support plans)
	5.1.2 The proportion and number of times that Aboriginal children and young people who live on and/or returned to Country in the previous year, and barriers service providers faced to organise return to Country trips.	Communities (cultural support plans) and service providers (via the reporting tool)
	5.1.3 The number and proportion of children and young people who reported feeling proud and connected to their culture and identity.	Communities (cultural support plans) and Child survey (via Viewpoint)

Outcome 6

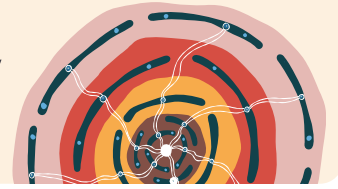
Children and young people in Out of Home Care learn and develop, and are supported to engage with education and training.

Indicators	Measures	Source
 6.1 Improved access to Aboriginal learning pathways	6.1.1 The proportion of Aboriginal children and young people who have secured Aboriginal employment, education and/or training pathways while in care or on leaving care.	Communities (ASSIST)
	6.2 Improved education and training outcomes and aspirations	
	6.2.1 The proportion of young people who are 16 or older transitioning to further education, training or employment on leaving OOHC.	Communities (ASSIST)
	6.2.2 The average school attendance rate for children and young people in OOHC.	PeopleWA
6.3 Improved transition planning	6.3.1 The proportion of young people aged 15 years and over who have a current leaving care plan, and that the young person and service provider was part of the development of the leaving care plan.	Communities (ASSIST)




Domain 2

Family, Kin and Community




Outcome 7

Children and young people in Out of Home Care grow up with safe and sustainable connections to their sibling groups, families, kin and communities.

Indicators	Measures	Source
 7.1 Increased connection to families, kin and communities	7.1.1 Proportion of children in care that are Aboriginal and Torres Strait Islander who were placed in accordance with the ATSCIPP 'placement'.	Communities (ATSCIPP reporting)
	7.1.2 The proportion of children and young people who report they feel connected to family and community.	Child survey (via Viewpoint)
	7.1.3 The proportion of siblings placed together or remaining together in care.	Communities (ASSIST)
	7.1.4 The proportion of children and young people who have positive family connections.	Service providers (via the reporting tool)


Outcome 8

Families, kin and communities are holistically supported to provide safe and nurturing homes for their children and young people in Out of Home Care.

Indicators	Measures	Source
 8.1 Increased holistic support for families and/or kin	8.1.1 The proportion of Aboriginal children and young people in OOHC who had their families and/or kin receive dedicated services to support reunification	Communities (ASSIST)
	8.1.2 The proportion of children and young people in OOHC who had their families receive dedicated services to support reunification.	Communities (ASSIST)

Outcome 9

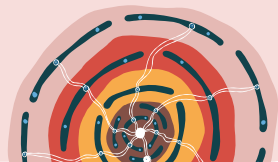
Families, kin and communities have their voices heard and inform care decision-making for their children in Out of Home Care, and participate in policy and service design.

Indicators	Measures	Source
 9.1 Improved inclusion, involvement and empowerment of families, kin and communities to lead decision-making	9.1.1 See measure 5.1.1 – The proportion of Aboriginal children and young people in OOHC who have a current documented and approved cultural support plan (developed within 12 months), and the proportion which were developed with the input of family members, ACCOs, other significant people to the child and/or the child.	Communities (cultural plans)
	9.1.2 The proportion of children in OOHC that have a current documented and approved care plan (developed within 12 months), and the proportion which were developed with the input of family members or other significant people to the child.	Communities (care planning data)



Domain 3

Service Providers and Carers



Outcome 10

Out of Home Care delivered by service providers and carers is trauma-informed, culturally safe, and centred around the needs of an individual child.

Indicators	Measures	Source
10.1 Increased culturally safe service provision	10.1.1 See measure 2.1.2 – The proportion of care arrangements for Aboriginal children and young people delivered by ACCOs.	Communities (ASSIST)
10.2 Improved services that are trauma-informed	10.2.1 The proportion of staff and carers who received trauma-informed training, learning and/or resources.	Service providers (via the reporting tool)
10.3 Improved care centred around the needs of the individual	10.3.1 The proportion of service models that were designed with the input of children and young people.	Service providers (via the reporting tool)

Outcome 11


Carers and service provider staff have the capabilities, capacity, and are supported to meet the needs of children and young people in Out of Home Care.

Indicators	Measures	Source
11.1 Improved cultural competency of carers and staff	11.1.1 Proportion of non-Aboriginal carers caring for Aboriginal children who received training and/or other learning and development activities on cultural safety and competency, rights of children, the impact of intergenerational trauma and cultural harm.	Service providers (via the reporting tool)
	11.1.2 The proportion of service provider staff who received training on cultural safety and competency, rights of children, the impact of intergenerational trauma and cultural harm.	Service providers (via the reporting tool)
11.2 Appropriate capacity of service providers	11.2.1 Number of new carers recruited over the past 12 months and the barriers to carer recruitment.	Service providers (via the reporting tool)

Indicators	Measures	Source
	11.2.2 The proportion of service providers who answered 'strongly agree,' 'agree,' 'neutral,' 'disagree' or 'strongly disagree' to the following questions: <ul style="list-style-type: none"> • We're able to attract and retain staff • We're able to attract and retain carers • We're able to reliably plan for the future • We're able to meet demand 	Service providers (via the reporting tool)

Outcome 12

There is a strong and sustainable ACCO sector delivering high quality services to meet the needs of Aboriginal people in Out of Home Care.

Indicators	Measures	Source
 12.1 Improved sustainability of ACCOs	12.1.1 The proportion of ACCOs contracted by Communities who report feeling there is a genuine partnership ³ with Communities to support the sustainability of ACCOs.	Service providers (via the reporting tool)
12.2 Increased proportion of ACCO service provision	12.2.1 See measure 2.1.2 – The proportion of care arrangements delivered by ACCOs (number of care arrangements and total investment).	Communities (ASSIST)

³ Definition provided in glossary

Domain 4

Service Providers and Carers

Outcome 13

The design of Out of Home Care system and service models are evidence informed, based on cultural and OOHC best practices and reliable quantitative and qualitative data.

Indicators	Measures	Source
13.1 Increased incorporation of Aboriginal information and knowledge in OOHC service delivery	13.1.1 The proportion of OOHC service models that are Aboriginal-led.	Service providers (via the reporting tool)
13.2 Improved interpretation and use of information and evidence in decision-making	13.2.1 The proportion of staff and carers who received trauma-informed training, learning and/or resources.	Communities (ASSIST)
13.3 Improved care centred around the needs of the individual	13.3.1 The proportion of ACCOs and other service providers reporting they have access to, the ability to use, and custodianship of data that will assist in the planning and delivery of services in their communities.	Service providers (via the reporting tool)
	13.3.2 The proportion of service providers who see data being collected as being used in line with best practice indigenous data sovereignty principles.	Service providers (via the reporting tool)


Outcome 14

The Out of Home Care system enables place-based and community-informed responses, delivered by local service providers and coordinated collaboration among local stakeholders.

Indicators	Measures	Source
14.1 Increased involvement of Aboriginal communities in developing, designing and delivering services and policies	14.1.1 The proportion of ACCOs reporting they lead or actively inform OOHC services and policies that are enacted.	Service providers (via the reporting tool)
14.2 Improved opportunity for service providers and stakeholders to inform the development, design and delivery of services and policies	14.2.1 The proportion of service providers reporting they lead or actively inform OOHC services and policies that are enacted.	Service providers (via the reporting tool)


Outcome 15

The system has sufficient resources, including funding and workforce, to be responsive and flexible, and meet care needs of all children requiring Out of Home Care.

Indicators	Measures	Source
 15.1 Sufficient resources for service providers to be responsive to changing needs	15.1.1 See measure 11.2.2 – The proportion of ACCOs who answered ‘strongly agree,’ ‘agree,’ ‘neutral,’ ‘disagree,’ or ‘strongly disagree’ to the following questions: <ul style="list-style-type: none">• We’re able to attract and retain staff• We’re able to attract and retain carers• We’re able to reliably plan for the future• We’re able to meet demand	Service providers (via the reporting tool)
	15.1.2 See measure 11.2.2 – The proportion of service providers who answered ‘strongly agree,’ ‘agree,’ ‘neutral,’ ‘disagree,’ or ‘strongly disagree’ to the following questions: <ul style="list-style-type: none">• We’re able to attract and retain staff• We’re able to attract and retain carers• We’re able to reliably plan for the future• We’re able to meet demand	Service providers (via the reporting tool)
	15.1.3 The proportion of care arrangement requests that are accepted by service providers, and reason for not accepting.	Communities (ASSIST) and service providers (via the reporting tool)


Outcome 16

The system supports integrated and collaborative approaches to Out of Home Care which embed trust, partnership and care coordination between agencies and service providers.

Indicators	Measures	Source
 16.1 Improved collaboration and knowledge sharing between system partners (service providers, Communities and peak bodies)	16.1.1 See 13.1.1 – the proportion of ACCOs reporting they have access to, the ability to use, and custodianship of data that will assist in the planning and delivery of services in their communities.	Service providers (via the reporting tool)
	16.1.2 The proportion of system partners who report they have benefitted from collaborating with other system partners	Service providers (via the reporting tool)


Outcome 17

There is shared accountability across the system for services delivered to children and young people and their outcomes, including through system-wide monitoring, evaluation and learning.

Indicators	Measures	Source
 17.1 Increased sharing of information that is accessible, valuable, transparent and of value to system partners.	17.1.1 See measure 13.3.1 – The proportion of ACCOs reporting they have access to, the ability to use, and custodianship of data that will assist in the planning and delivery of services in their communities.	Service providers (via the reporting tool)
	17.1.2 See measure 13.3.1 – The proportion of other service providers reporting they have access to, the ability to use, and custodianship of data that will assist in the planning and delivery of services in their communities.	Service providers (via the reporting tool)

Outcome 18

The system achieves equitable experiences and outcomes for children and young people regardless of where they live or who the service provider is.

Indicators	Measures	Source
 18.1 Improved equitable experiences and outcomes for Aboriginal children in OOHC	18.1.1 See measure 13.3.1 – The proportion of ACCOs reporting they have access to, the ability to use, and custodianship of data that will assist in the planning and delivery of services in their communities.	Service providers (via the reporting tool)
	18.2 Improved equitable experiences and outcomes for children in OOHC	N/A
	18.2.2 The proportion of children aged 0-16 who exited OOHC to reunification in the previous year and did not return to OOHC in 12 months or less.	Communities (ASSIST)

Glossary

The intention of this document has been to use language that is clear and inclusive, however we recognise that there is not always consensus on meaning. This section is a glossary that contains a list of key terminology and the intended meaning in the context of this framework.

Key Terminology	Intended Meaning
Aboriginal people	The term 'Aboriginal people' has been used throughout the document and is intended to refer to all Aboriginal and Torres Strait Islander peoples.
ACCOs	Aboriginal Community Controlled Organisations deliver services that build the strength and empowerment of Aboriginal and Torres Strait Islander communities and people, and are: <ul style="list-style-type: none">• incorporated under relevant legislation and not-for-profit• controlled and operated by Aboriginal and/or Torres Strait Islander people• connected to the community, or communities, in which they deliver the services• governed by a majority Aboriginal and/or Torres Strait Islander governing body.
CASC	The Care Arrangement Support Cost funding model forms part of the broader OOHC reform and supports needs-based allocation of resources to children. The CASC model aims to enhance the stability of care arrangements by providing funding that is tied to the additional needs of a child, informed by the Needs Assessment Tool level.
Children and young people	The term 'children and young people' refers to individuals aged 0 to 17 years in OOHC.
Communities	The WA Department of Communities
CSOs	Community Service Organisations are not-for-profit entities that primarily engage in delivering community-based services focused on improving the quality of life for individuals and groups within the community. For the purposes of this report and to reflect the language used in the sector, these do not include ACCOs.
Cultural safety	As outlined in the Aboriginal Cultural Framework 2024 – 2034, for the purposes of this document, the term 'cultural safety' refers to overcoming the power imbalances of places, people and policies that occur between the majority non-Aboriginal position and the minority Aboriginal person so that there is no assault, challenge or denial of the Aboriginal person's identity, of who they are and what they need. Cultural safety is met through actions from the majority position which recognise, respect and nurture the unique cultural identity of Aboriginal people. Only the Aboriginal person who is a recipient of a service or interaction can determine whether it is culturally safe. For the purposes of outcomes reporting, this may not always be possible or practical. In cases where it is not, a good indicator of when services are culturally safe include when they are delivered by an ACCO or Aboriginal practitioner, or by other services deemed culturally safe by an ACCO delivering Out of Home Care.

Key Terminology	Intended Meaning
Genuine partnership	Partnerships are accountable and representative, with formal agreements in place and shared decision-making between government and Aboriginal and Torres Strait Islander people as outlined in Closing the Gap.
NAT	The Needs Assessment Tool provides an assessment of a child's individual and service needs on a scale from 1-5. Depending on the score obtained from this evaluation, service providers are allocated varying levels of funding, which are intended to correspond to and meet the needs of each child.
OOHC	Out of Home Care refers to care arrangements for children outside of their own family home including after-hours placement, district care, foster care, group homes and transitional high needs care in Western Australia.
Service providers	The term 'service providers' refers to organisations commissioned to provide OOHC in Western Australia. These are a combination of CSOs and ACCOs.
SNAICC	The Secretariat of National Aboriginal and Islander Child Care (SNAICC) is the national peak body ACCO that works to improve outcomes and opportunities for Aboriginal and Torres Strait Islander children and strengthen the capacities of families across Australia.

Frequency of data collection

The intention of this document has been to use language that is clear and inclusive, however we recognise that there is not always consensus on meaning. This section is a glossary that contains a list of key terminology and the intended meaning in the context of this framework.

Data Source	Frequency Of Collection
Child survey (via Viewpoint)	Every year
Communities (ATSICPP reporting)	Every year
Communities (care planning data)	Every year
Communities (cultural plans)	Every year
Service providers (via the reporting tool)	Every six months



Department of Communities

Postal address: Locked Bag 5000, Fremantle WA 6959

Telephone: 1800 176 888

Email: enquiries@communities.wa.gov.au

Website: www.communities.wa.gov.au

Translating and Interpreting Service (TIS) – Telephone: 13 14 50

If you are deaf, or have a hearing or speech impairment, contact us through the National Relay Service. For more information visit:

www.accesshub.gov.au/about-the-nrs