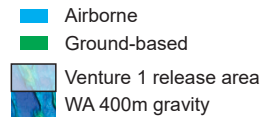
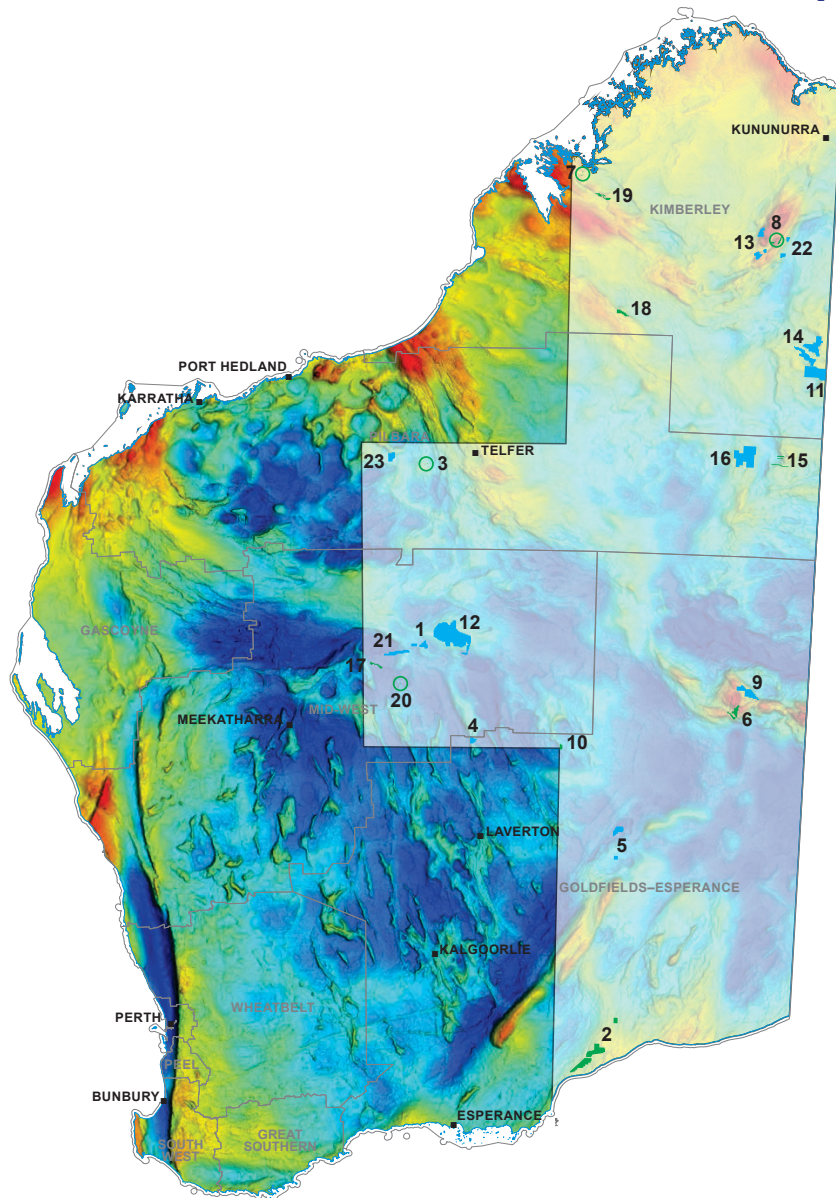


EXPLORATION INCENTIVE SCHEME

CO-FUNDED GEOPHYSICS PROGRAM VENTURE 1, 2024–25

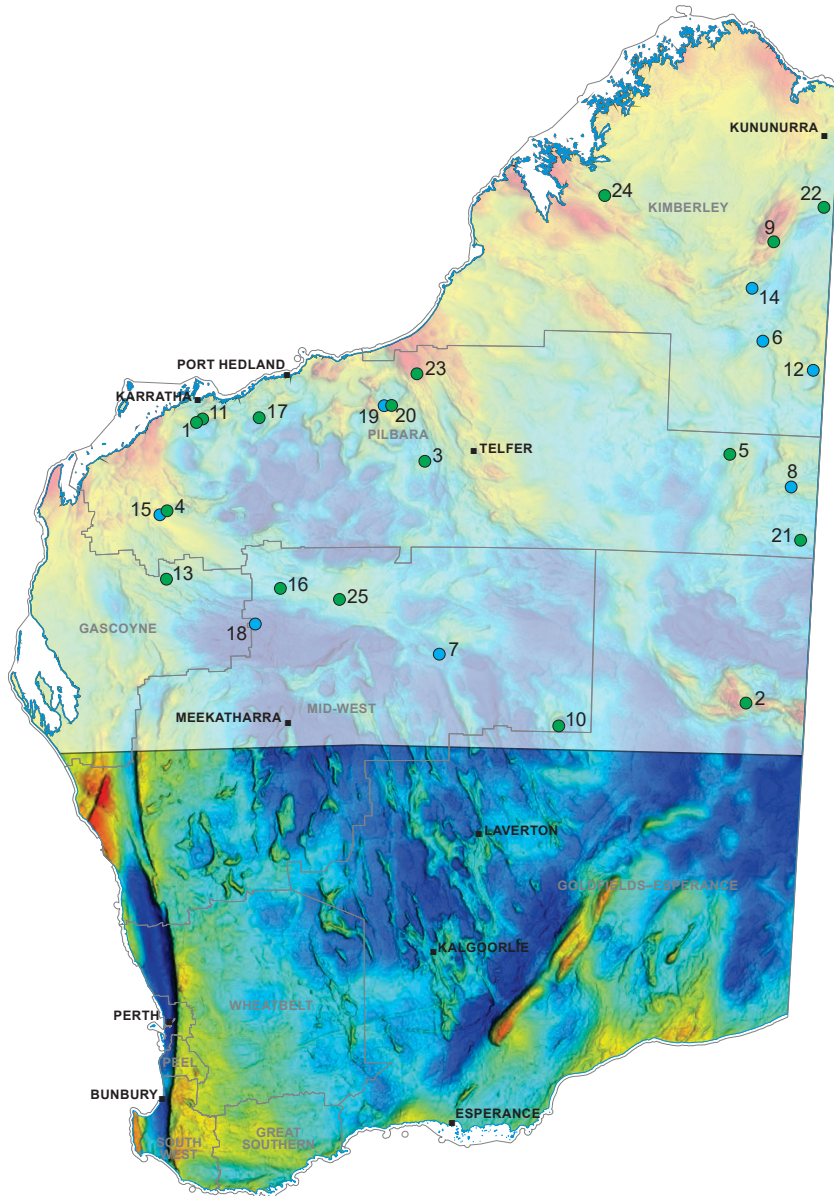
Map ID	Applicant name	Project title	Commodity	Survey type
1	AusQuest Limited	Mt Davis	Cu, Cr, Co, Mn, Ni, Pb, PGE, Zn	Airborne survey
2	BHP Nickel West Pty Ltd	Seahorse	Ni	Ground-based survey
3	Black Canyon Limited	Fig Tree Project	Mn	Ground-based survey
4	Cannon Resources Limited	Collurabbie	Au, Cu, Co, Ni, Pd, PGE, Pt	Airborne survey
5	Carawine Resources	Spackman and Chicago AGG	Au, Cu, REE, Ni	Airborne survey
6	Caspin Resources Limited	Mount Squires Project	Au, Cu, Co, Ni, PGE	Ground-based survey
7	Dreadnought Resources Ltd	Tarrajai IP Survey	Ag, Au, Cu, Co, Ni, Pb, Zn	Ground-based survey
8	Future Metals Limited	Alice Downs/North Panton	Cu, Ni, Pd, Pt	Ground-based survey
9	GCX Metals Limited	Dante Ni-Cu-PGE Project	Au, Cu, Ni, Pd, PGE, Pt, V	Airborne survey
10	Greatland Exploration Pty Ltd	Ernest Giles IP Survey	Au, Cu, Ni	Ground-based survey
11	Hamelin Gold Limited	West Tanami Project	Cu, Ni, PGE	Airborne survey
12	Hampton Metals Limited	Glenayle	Ni, Cu, PGE	Airborne survey
13	IGO Newsearch Pty Ltd	East Kimberley	Cu, Co, Ni	Airborne survey
14	Killi Resources Limited	West Tanami Project	Au, Cu, REE	Airborne survey
15	Longreach No. 1 Pty Ltd	East Canning - Ground MT	Au, Cu, REE, Pb, Zn	Ground-based survey
16	Longreach No. 1 Pty Ltd	Crossland Platform AGG	Au, Cu, REE, Pb, Zn	Airborne survey
17	Rumble Resources Ltd	Biko	Ag, Cu, Pb, Zn	Ground-based survey
18	SIPA Resources Limited	Barbwire Terrace	Pb, Zn	Ground-based survey
19	Stavely Minerals Limited	Hawkstone Project	Cu, Co, Ni	Ground-based survey
20	Strickland Metals Ltd	Rabbit Well	Ag, Cu, Pb, Zn	Ground-based survey
21	Tempest Minerals Ltd	Five Wheels	Ag, Au, Cu, Pb, Zn	Airborne survey
22	W R Richmond	Dry Creek	Ag, Au, Cu, Cr, Co, Diamond, REE, Li, Mn, Mo, Nb, Ni, Pb, Pd, PGE, Pt, Ta, Graphite, V, W, Zn	Airborne survey
23	Wishbone Gold WA Pty Ltd	Crescent East	Ag, Au, Cu, Li, W	Airborne survey



EXPLORATION INCENTIVE SCHEME

CO-FUNDED GEOPHYSICS PROGRAM VENTURE 2, 2025–26

Map ID	Applicant name	Project title	Commodity	Survey type
1	Alien Metals Australia Pty Ltd	Pindri Hills Gravity	Ag, Cu, Ni, PGE	Ground-based survey
2	BHP Western Australia Nickel	West Musgravies	Cu, Ni	Ground-based survey
3	Black Canyon Ltd	Fig Tree	Mn	Ground-based survey
4	Black Cat (Paulsens) Pty Ltd	Ashburton Basin MT	Ag, Au, Cu	Ground-based survey
5	Buxton Resources Ltd	Centurion	Au, Cu	Airborne survey
6	Buxton Resources Ltd	Lateron	Au, Cu	Airborne survey
7	Carnaby Resources Ltd	Malmac	Au, Cu, Li, Pb, Zn	Airborne survey
8	Encounter Resources Ltd	Aileron	Au, Cu, REE, Nb	Airborne survey
9	Future Metals Ltd	Eileen Bore	Cu, Ni, PGE	Ground-based survey
10	Greatland Exploration Pty Ltd	Ernest Giles MT Survey	Au, Cu, Ni	Ground-based survey
11	GreenTech Metals Ltd	Whundo Project	Ag, Au, Cu, Co, Zn	Ground-based survey
12	Hamelin Gold Ltd	Western Tanami AEM	Cu, Ni	Airborne survey
13	Hastings Technology Metals Ltd	Gifford Creek Extension	REE	Ground-based survey
14	IGO Ltd	Olympio	Cu, Co, Ni	Airborne survey
15	Marquee Resources Ltd	Mt Clement Project	Ag, Au, Pb	Airborne survey
16	Miramar Resources Ltd	Bangemall Ni-Cu-PGE's	Cu, Co, Ni, Pd, PGE, Pt	Airborne survey
17	Morella Corporation Ltd	Mallina	Li	Ground-based survey
18	Mount Gibson Mining Ltd	Milgun Project	Ag, Au, Cu, Pb, Zn	Airborne survey
19	Muccanabout Pty Ltd	Warrawagine CuMo District	Ag, Cu, Mo	Airborne survey
20	Muccanabout Pty Ltd	Warrawagine Cu-Mo (IP/MT)	Ag, Cu, Mo	Ground-based survey
21	Norwest Minerals Ltd	Arunta West	Ag, Au, Cu, Pb, Zn	Ground-based survey
22	Omnia Metals Group Ltd	Ord Basin Project	Cu, Ni, PGE	Ground-based survey
23	Red Metal Ltd	Yarrie West	Ag, Au, Cu, Co	Ground-based survey
24	Stavely Minerals Ltd	Hawkstone Project	Cu, Co, Ni	Ground-based survey
25	Taiflower Pty Ltd	Ilgarari Cu Project	Cu	Ground-based survey

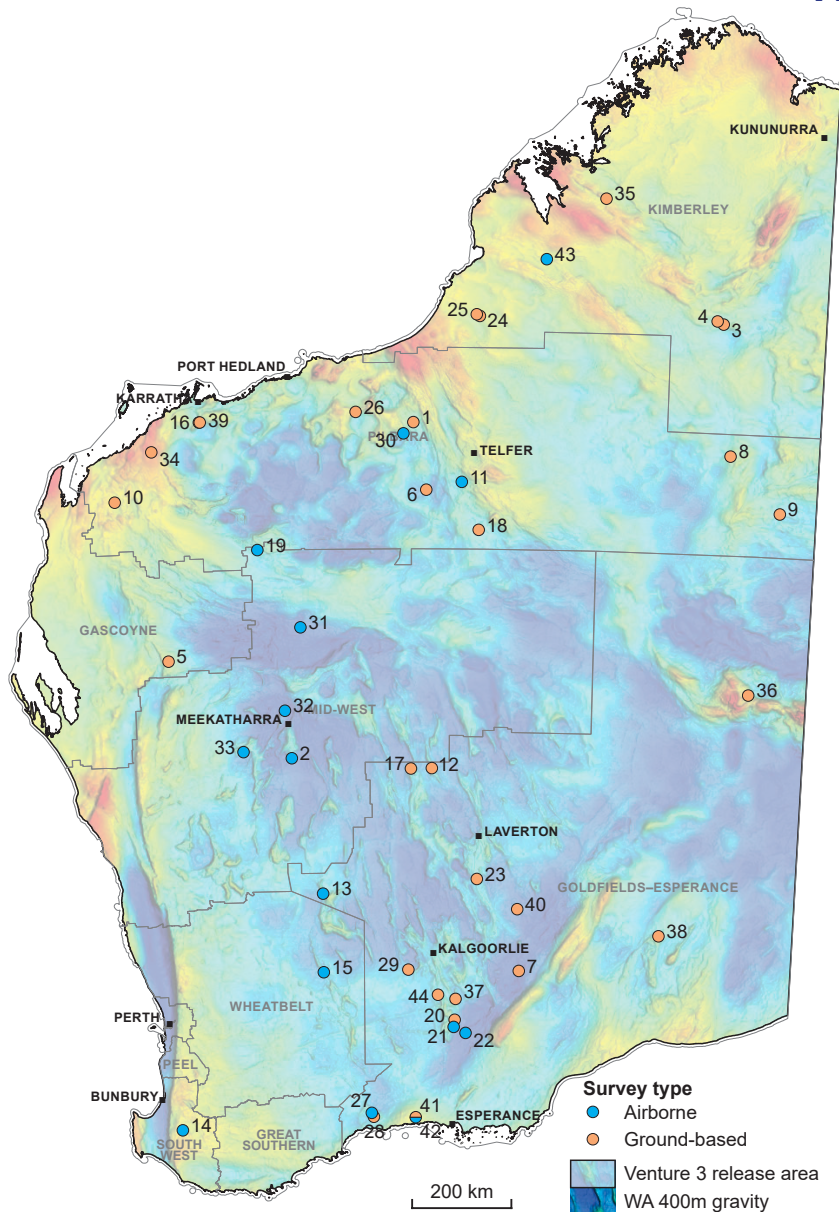


- Airborne
- Ground-based
- Venture 2 release area
- WA 400m gravity

200 km

EXPLORATION INCENTIVE SCHEME

CO-FUNDED GEOPHYSICS PROGRAM VENTURE 3, 2026–27



Map ID	Applicant name	Project title	Commodity	Survey type
1	Accelerate Resources Limited	Woodie Woodie North	Mn	Ground-based survey
2	Antares Metals Limited	Quinns VMS/AU Project	Ag, Au, Cu, Zn	Airborne survey
3	Archer X Pty Ltd	Martin SAM survey	Au	Ground-based survey
4	Archer X Pty Ltd	Christmas Creek Gravity	Au, Cu, REE, Mn, Pb, Zn	Ground-based survey
5	Benz Mining	Glenburgh	Au	Ground-based survey
6	Black Canyon Pty Ltd	Wandanya Deeps	Mn	Ground-based survey
7	BPM Minerals Limited	Foreland/Bonnie and Clyde	Au	Ground-based survey
8	Buxton Resources Ltd	Centurion	Ag, Au, Cu	Ground-based survey
9	Caprice Resources Ltd	The Chobe Project	Ag, Au, Cu, REE, Nb	Ground-based survey
10	Cauldron Energy Ltd	Yanrey Uranium Project	REE, V	Ground-based survey
11	CDL Gold Pty Ltd	Paterson Project	Au, Cu, Mo	Airborne survey
12	Emerald Resources (WA) Pty Ltd	Dingo Range Gold Project	Au	Ground-based survey
13	Farside Resources Pty Ltd	Kim Bore	Au, Cu, Zn	Airborne survey
14	Galan Lithium Limited	Greenbushes South	Li, Ta	Airborne survey
15	Golden Horse Minerals (Aust) Pty Ltd	SX VTEM Survey	Au	Airborne survey
16	Greentech Metals Limited	Munni Munni Project	Ag, Cu, Ni, Pd, PGE, Pt	Ground-based survey
17	Hammer Metals Limited	HVSR at West Gap Fault	Au	Ground-based survey
18	Iceni Gold Ltd	Welcome Creek	Au, Cu	Ground-based survey
19	Kalamazoo Resources Limited	Ashburton Gold Project	Au	Airborne survey
20	Lachlan Star Ltd	Killaloe Gold Project	Au	Ground-based survey
21	Lachlan Star Ltd	New Waverley	Au	Airborne survey
22	Larvotto Resources Ltd	Merivale South REE	REE	Airborne survey
23	Latitude 66 Ltd	Red Dog	Au	Ground-based survey
24	Massive Metals Pty Ltd	CSEM Survey Admiral Bay	Ag, Pb, Zn	Ground-based survey
25	Massive Metals Pty Ltd	MT Survey at Admiral Bay	Ag, Pb, Zn	Ground-based survey
26	MB Gold Limited	Murphy Well DDIP Survey	Au, Cu	Ground-based survey
27	Medallion Metals Limited	Kundip	Ag, Au, Cu, Co, Pb, Zn	Airborne survey
28	Medallion Metals Limited	Jerdacuttup	Ag, Cu, Co, Pb, Zn	Ground-based survey
29	Minerals 260	Bullabulling Gold Project	Au	Ground-based survey
30	Muccanabout Pty Ltd	Pilbara Crustal Boundary	Ag, Au, Cu, Mn, Mo, Pb, Zn	Airborne survey
31	Nebula Resources Pty Ltd	Bangemall South	Cu, Co, Ni, PGE	Airborne survey
32	Premier1 Lithium	Abbotts North Project	Ag, Au, Cu, Li, Pb, Zn	Airborne survey
33	Scorpion Minerals Limited	Pharos	Au, Cu, Co, Li, Ni, PGE, Ta	Airborne survey
34	Skryne Hill Pty Ltd	Yarraloola Cu-Au Project	Ag, Au, Cu, Pb, Zn	Ground-based survey
35	Stavely Minerals Limited	Hawkstone Project	Cu, Co, Ni	Ground-based survey
36	Terra Metals Limited	Dante - Area 3 Project	Au, Cu, Ni, Pd, PGE, Pt, V	Ground-based survey
37	Torque Metals Ltd	Paris Gold Project	Au, Cu	Ground-based survey
38	WA1 Madura Holdings Pty Ltd	Sleeper Camp Project	Ag, Au, Cu, Pb, Zn	Ground-based survey
39	West Coast Silver Limited	Elizabeth Hill Project	Ag, Cu, Ni	Ground-based survey
40	Western Mines Group Ltd	Mulga Tank	Cu, Co, Ni, PGE	Ground-based survey
41	Wildcat Resources Limited	Sauron MLEM	Cu, Ni, PGE	Ground-based survey
42	Wildcat Resources Limited	Sauron AGG	Cu, Ni, PGE	Airborne survey
43	William Richmond	Frome Rocks	Ag, Cu, Li, Pb, Potash, Zn	Airborne survey
44	Wyloo Kambalda Pty Ltd	Widgie Au Gravity Survey	Au	Ground-based survey