

OFFICIAL



GOVERNMENT OF
WESTERN AUSTRALIA

*Section 70(2)
Environmental Protection Act 1986.*

VEGETATION CONSERVATION NOTICE

CPS 11525/1

Persons to whom this Vegetation Conservation Notice is given (The Owner):

(being the owner of the land described below)

EDENSEA PTY LTD
UNIT SUITE 8, 10 WILLIAM STREET
ESPERANCE WA 6450

Land to which this Vegetation Conservation Notice relates (“the land”):

Lot 1 on Diagram 67253 as comprised on Certificate of Title Volume 1692 Folio 199

Lot 3 on Diagram 80262 as comprised on Certificate of Title Volume 1926 Folio 568

Lot 4 on Diagram 80262 as comprised on Certificate of Title Volume 1926 Folio 569

Lot 402 on Deposited Plan 135877 as comprised on Certificate of Title Volume 773 Folio 174

Lot 722 on Deposited Plan 230214 as comprised on Certificate of Title Volume 1146 Folio 47

Reasons for which this Vegetation Conservation Notice is served:

This Vegetation Conservation Notice (VCN) is given because I suspect on the following grounds that unlawful clearing has taken place on the Land:

- (a) Satellite imagery from January 2021 showed native vegetation present on the Land.
- (b) Satellite imagery on 22 March 2025 showed the native vegetation as not being present on the Land.
- (c) A site inspection of the Land by Department of Water and Environmental Regulation (the department) Inspectors on 12 and 13 February 2025 confirmed that clearing had been carried out.

(d) I suspect on reasonable grounds that the clearing was not authorised by:

- a clearing permit; or
- by exemption under the *Environmental Protection Act 1986*; or
- by exemption under the *Environmental Protection (Clearing of Native Vegetation) Regulations 2004*; or
- by a notice issued under section 51DA(5) of the *Environmental Protection Act 1986*.

Therefore, I suspect on reasonable grounds that unlawful clearing of native vegetation has taken place on the Land, constituting a contravention of section 51C of the *Environmental Protection Act 1986*.

Requirements of this Notice:

The person(s) to whom this VCN is given, and each subsequent owner and or occupier of the land who is bound by this VCN, are required to undertake the following specified measures:

- For a period of twenty (20) years from the date this notice is given, re-establish and maintain native vegetation on any area affected by the clearing to a condition, as near as possible, to the condition of the native vegetation before the clearing occurred.

1. No unlawful clearing

Ensure that no further unlawful clearing takes place on the land.

2. Cultivation prohibited

From the date this notice is given, ensure no cultivation, including harvesting, mowing, scraping, raking, ploughing or mechanical movement of soil or seeding of non-native crops, is carried out within the *specified areas* other than for purposes required under this VCN or for the purpose of complying with a written fire hazard reduction notice.

3. Exclusion of stock

Ensure that *livestock* are excluded from the *specified areas* and not cause or permit *livestock* to enter or remain within the *specified areas*.

4. Revegetation

(a) Within six (6) months from the date of the issuing of the VCN, or other such timeframe as agreed by the *CEO*, submit a Revegetation Plan to the *CEO* for approval for the revegetation and rehabilitation of the *specified areas*.

(b) The Revegetation Plan must be prepared by an *Environmental Specialist*.

(c) The Revegetation Plan must include the following:

- (i) *site preparation*
- (ii) *weed control*

OFFICIAL

- (iii) *regeneration, direct seeding or planting, at an optimal time*
 - (iv) *a vegetation establishment period*
 - (v) *revegetation* completion criteria to achieve a native vegetation condition, structure and density as near as possible to that present before the clearing occurred
 - (vi) the establishment of monitoring quadrats within the *specified area*
 - (vii) details of ongoing maintenance and monitoring of *revegetation* within the *specified area* to determine if the completion criteria are likely to be met. Monitoring must be undertaken by an *Environmental Specialist* a minimum of once every two years
 - (viii) *remedial actions* to be undertaken if the completion criteria are not likely to be, or have not been met
 - (ix) timeframes for the completion of all activities; and
 - (x) a requirement to keep records of all activities undertaken to be submitted to the department.
- (d) If the *CEO* does not approve the Revegetation Plan, it must be revised in accordance with the *CEO's* direction and resubmitted within one (1) month of the date of the *CEO's* decision on the Revegetation Plan under Measure 4(a) of this VCN, or other such timeframe as agreed by the *CEO*.
- (e) If directed by the *CEO*, an approved revegetation plan must be updated and resubmitted for approval under Measure 4(a) of this VCN.
- (f) The VCN holder may submit an updated version of an approved Revegetation Plan for *CEO* approval under Measure 4(a) of this VCN.
- (g) The VCN holder must implement the latest version of the Revegetation Plan approved by the *CEO*.

5. Success of Revegetation

Where, for any reason, *revegetation* undertaken in accordance with Measure 4 of this notice is not achieved, each and every year for a period of twenty (20) years after the giving of this notice, or until, in the opinion of the *CEO*, revegetation is achieved, whichever is the lesser period, continue to *revegetate* the *specified areas* in accordance with Measure 4.

6. Reporting

For the period of twenty (20) years after the giving of this notice, or until, in the opinion of the *CEO*, revegetation is achieved, provide to the *CEO* a biennial written report of records required under Measure 4 of this VCN for the preceding two calendar years (1 January to 31 December the following year).

DEFINITIONS

The following meanings are given to terms used in this VCN:

Table 1: Defined Terms.

Term	Definition
<i>CEO</i>	means the Chief Executive Officer of the Department of the Public Service of the State through which the Environmental Protection Act 1986 is administered.
<i>department</i>	means the Department of Water and Environmental Regulation
<i>direct seeding</i>	means a method of re-establishing vegetation through the establishment of a seed bed and the introduction of seeds of the desired plant species.
<i>Environmental Specialist</i>	means a person who holds a tertiary qualification in environmental science or equivalent and has a minimum of two (2) years work experience relevant to the type of environmental advice that an Environmental Specialist is required to provide under this permit, or who is approved by the CEO as a suitable Environmental Specialist.
<i>Keighery Scale</i>	means the vegetation condition scale described in Bushland Plant Survey: A Guide to Plant Community Survey for the Community (1994) as developed by B.J. Keighery and published by the Wildflower Society of WA (Inc). Nedlands, Western Australia.
<i>livestock</i>	means any animal kept for domestic or commercial purposes and includes any horse, donkey, mule, cattle, sheep, swine, goat, buffalo, deer, camel or alpaca.
<i>optimal time</i>	means the period from April to July for undertaking <i>planting</i> and <i>direct seeding</i> .
<i>planting</i>	means the re-establishment of vegetation by creating favourable soil conditions and planting seedlings of the desired native, endemic species.
<i>remedial actions</i>	means any activity that is required to ensure successful re-establishment of native vegetation to its pre-clearing composition, structure and density, and may include a combination of soil treatments and <i>revegetation</i> .

OFFICIAL

Term	Definition
<i>regenerate / regenerated / regeneration</i>	means re-establishment of vegetation from in situ seed banks and propagating material (such as lignotubers, bulbs, rhizomes) contained either within the topsoil or seed-bearing mulch.
<i>revegetate/ vegetated/ revegetation</i>	means the re-establishment of a cover of <i>local provenance</i> native vegetation in an area using methods such as natural <i>regeneration</i> , <i>direct seeding</i> and/or <i>planting</i> , so that the species composition, structure and density is to a condition, as near as possible, to the condition of the vegetation prior to the clearing occurring
<i>site preparation</i>	means management of existing site topsoil and preparation of the finished soil surface, for example by ripping or tilling the soil surface and resspreading site topsoil and chipped native vegetation
<i>specified area</i>	specified area means the portions of Lot 1 on Diagram 67253, Lot 3 on Diagram 80262, Lot 4 on Diagram 80262, Lot 402 on Deposited Plan 135877 and Lot 722 on Deposited Plan 230214 bounded by a lines joining the Zone 51 GDA 2020 points set out in Table 2 below, as depicted in the attached map CPS 11525/1 specified area.
<i>vegetation condition</i>	vegetation condition means the rating given to native vegetation using the <i>Keighery scale</i> and refers to the degree of change in the structure, density, and species present in the particular vegetation in comparison to undisturbed vegetation of the same type.
<i>vegetation establishment period</i>	means a period of at least two summers after the revegetation during which time replacement and infill <i>revegetation</i> works may be required for areas in which <i>revegetation</i> has been unsuccessful and involves regular inspections of <i>revegetation</i> sites to monitor the success of <i>revegetation</i> .
weed	means any plant – (a) that is a declared pest under section 22 of the Biosecurity and Agriculture Management Act 2007; or (b) published in a Department of Biodiversity, Conservation and Attractions species-led ecological impact and invasiveness ranking summary, regardless of ranking; or (c) not indigenous to the area concerned.

Table 2: Specified area co-ordinates

Specified area 1										
	easting	northing			easting	northing			easting	northing
1	388887.9	6257333		1	389146.6	6258166		1	389256.2	6257208
1	388991.7	6257378		1	389130	6258191		1	389268.3	6257205
1	389088.4	6257395		1	389158.1	6258192		1	389282.1	6257209
1	389084.6	6257420		1	389169	6258212		1	389295.1	6257204
1	389097.3	6257448		1	389214.4	6258218		1	389305.5	6257178
1	389086.6	6257473		1	389250.5	6258210		1	389232.4	6257165
1	389041.7	6257466		1	389265	6258189		1	389196.8	6257169
1	389012	6257469		1	389295	6258222		1	389182.5	6257175
1	388984.1	6257476		1	389282.7	6258240		1	389170.7	6257175
1	388958.6	6257477		1	389291.3	6258253		1	389158.9	6257172
1	388938.1	6257455		1	389310.1	6258250		1	389155.5	6257166
1	388920.3	6257451		1	389317	6258244		1	389142	6257159
1	388883.6	6257450		1	389275.3	6258175		1	389120.7	6257153
1	388826.1	6257452		1	389274.2	6258164		1	389055	6257152
1	388788.6	6257468		1	389288.1	6258150		1	389034.2	6257145
1	388774.1	6257485		1	389306.5	6258171		1	389026.9	6257138
1	388763.2	6257508		1	389328	6258206		1	388981.5	6257133
1	388743	6257516		1	389358.7	6258209		1	389026.8	6257168
1	388731.5	6257533		1	389409.4	6258229		1	389060	6257214
1	388745.6	6257540		1	389445.2	6258225		1	389043.7	6257239
1	388785.3	6257542		1	389438	6258205		1	389013.4	6257245
1	388813.1	6257547		1	389448.6	6258192		1	389012.9	6257240
1	388840.8	6257561		1	389484.1	6258177		1	389030.7	6257240
1	388881.9	6257544		1	389520.1	6258177		1	389038.6	6257235
1	388908.1	6257539		1	389539.4	6258163		1	389038	6257224
1	388937.4	6257563		1	389514	6258169		1	389026.7	6257216
1	388920.1	6257574		1	389510.7	6258156		1	389015.3	6257194
1	388893	6257610		1	389512.9	6258134		1	388990	6257172
1	388876.8	6257623		1	389451.3	6258120		1	388975.8	6257165
1	388839.9	6257642		1	389430.5	6258140		1	388961.4	6257177
1	388813	6257660		1	389404.5	6258129		1	388952.4	6257170
1	388788.7	6257660		1	389398.5	6258159		1	388957	6257205
1	388786.4	6257651		1	389382.2	6258161		1	388902.6	6257192
1	388793.1	6257641		1	389346.4	6258146		1	388857.5	6257194
1	388803.7	6257646		1	389372.7	6258117		1	388859.8	6257202
1	388819.3	6257629		1	389361.8	6258116		1	388856.2	6257211

OFFICIAL

Specified area 1										
	easting	northing			easting	northing			easting	northing
1	388791.1	6257609	1		389319.9	6258097	1		388791.6	6257153
1	388794.8	6257596	1		389278.3	6258059	1		388765.3	6257141
1	388806.1	6257593	1		389187.7	6258038	1		388771.1	6257120
1	388812.1	6257587	1		389188.2	6258042	1		388775.2	6257122
1	388816.4	6257575	1		389088	6258045	1		388770.2	6257131
1	388781.9	6257578	1		389056.7	6258030	1		388798.8	6257144
1	388776.3	6257605	1		389051.3	6257975	1		388807.6	6257156
1	388771.5	6257612	1		389060.8	6257948	1		388814.2	6257150
1	388758.5	6257607	1		389058.7	6257946	1		388817.3	6257137
1	388749.7	6257599	1		389074.2	6257935	1		388828.9	6257126
1	388742.8	6257630	1		389079.3	6257942	1		388853	6257128
1	388705.6	6257666	1		389099	6257910	1		388839.7	6257114
1	388698.8	6257647	1		389116.8	6257916	1		388815.5	6257111
1	388723.5	6257610	1		389113.3	6257955	1		388821.9	6257107
1	388721.4	6257586	1		389120.7	6257961	1		388805.8	6257104
1	388730.6	6257562	1		389128.3	6257946	1		388678.3	6257087
1	388710.6	6257546	1		389146.3	6257940	1		388664.5	6257091
1	388644.6	6257564	1		389147.6	6257957	1		388660.4	6257099
1	388648.6	6257678	1		389165.4	6257958	1		388653.1	6257093
1	388646.7	6257693	1		389183.2	6257967	1		388653.7	6257112
1	388651.8	6257707	1		389187.2	6258001	1		388649.5	6257120
1	388664.9	6257703	1		389198.3	6258009	1		388663.5	6257133
1	388676.1	6257705	1		389190.7	6258036	1		388721	6257142
1	388683.7	6257722	1		389198.1	6258039	1		388754	6257157
1	388704.2	6257736	1		389206.3	6258014	1		388755.5	6257155
1	388708.2	6257754	1		389237.4	6258037	1		388807.9	6257190
1	388704.5	6257765	1		389239.2	6258015	1		388857.2	6257237
1	388698.5	6257771	1		389214.4	6257990	1		388869.1	6257258
1	388681.2	6257777	1		389222.9	6257965	1		388883.6	6257265
1	388682.9	6257784	1		389248.7	6257975	1		388885	6257270
1	388694.7	6257793	1		389344.4	6258032	1		388875.1	6257314
1	388721.3	6257801	1		389363.1	6258076	1		388887.9	6257333
1	388728.9	6257810	1		389392.3	6258100	1		388920.5	6257235
1	388707.4	6257826	1		389379.8	6258115	1		388890.9	6257227
1	388690.4	6257822	1		389390.7	6258132	1		388867.2	6257232
1	388647.9	6257792	1		389407.5	6258100	1		388871	6257206
1	388639.9	6257856	1		389442.5	6258122	1		388899.4	6257209
1	388641.5	6257888	1		389448.8	6258121	1		388941.1	6257219
1	388647.9	6257914	1		389416.8	6258053	1		388959	6257227
1	388651.4	6257916	1		389464.3	6258066	1		388972.6	6257241
1	388701.3	6257911	1		389489.3	6258048	1		388970.7	6257253
1	388693.3	6257888	1		389532.8	6258082	1		388964	6257261
1	388665.4	6257882	1		389587.6	6258087	1		388942	6257269
1	388658.1	6257875	1		389641.3	6258075	1		388922.7	6257268

OFFICIAL

Specified area 1										
	easting	northing			easting	northing			easting	northing
1	388657.2	6257864		1	389655.4	6258083		1	388932.7	6257260
1	388671.3	6257859		1	389659.2	6258077		1	388930.5	6257241
1	388693.4	6257866		1	389665.9	6258073		1	388920.5	6257235
1	388719.2	6257893		1	389736.6	6258123		1	388995	6257250
1	388722.2	6257890		1	389761.9	6258116		1	389052.4	6257255
1	388723.3	6257911		1	389756.2	6258099		1	389063.5	6257266
1	388710.8	6257926		1	389743.7	6258083		1	389082	6257267
1	388652.3	6257943		1	389732.6	6258081		1	389108	6257259
1	388640.8	6257977		1	389750.9	6258103		1	389104.6	6257262
1	388641.8	6258083		1	389736.7	6258113		1	389127.1	6257286
1	388647.5	6258083		1	389676.1	6258066		1	389120.8	6257291
1	388662	6258065		1	389700.3	6258035		1	389094.1	6257293
1	388656	6258053		1	389768.1	6258037		1	389058	6257306
1	388646.3	6258049		1	389914.6	6257940		1	389013.4	6257295
1	388664.7	6257990		1	389903.4	6257889		1	389003.4	6257286
1	388676	6257990		1	389924.1	6257855		1	388996.5	6257269
1	388692.9	6257967		1	389992.7	6257838		1	388995	6257250
1	388723.4	6257940		1	390008.5	6257908		1	389048.9	6257352
1	388726.8	6257950		1	390148.7	6258074		1	389075.7	6257357
1	388734.7	6257958		1	390148.7	6258050		1	389074.3	6257375
1	388750.9	6257952		1	390138.4	6258043		1	388994.3	6257361
1	388764.7	6257943		1	390069.2	6257968		1	388932.4	6257333
1	388770.2	6257935		1	390059.3	6257951		1	388886.5	6257322
1	388779.9	6257939		1	390031.7	6257920		1	388893.5	6257273
1	388774.3	6257967		1	390007.9	6257861		1	388946.4	6257296
1	388750.7	6257979		1	390005.2	6257835		1	388995.6	6257300
1	388749.6	6257991		1	390102.1	6257808		1	389049	6257316
1	388733.5	6257992		1	390113.9	6257791		1	389044.7	6257332
1	388730.4	6257976		1	390171.5	6257799		1	389048.9	6257352
1	388718.4	6257976		1	390196	6257824		1	389130.4	6257185
1	388711.2	6257984		1	390221.4	6257820		1	389136.1	6257168
1	388700.1	6258000		1	390262.4	6257826		1	389149.9	6257176
1	388697.4	6258020		1	390327.6	6257863		1	389150.4	6257184
1	388707.2	6258034		1	390343.9	6257847		1	389130.4	6257185
1	388734.2	6258038		1	390318.1	6257840		1	389075.8	6257156
1	388747.6	6258026		1	390294	6257798		1	389125	6257161
1	388760.2	6258007		1	390270.2	6257795		1	389129	6257164
1	388783.2	6258005		1	390253.2	6257784		1	389120	6257186
1	388805.6	6258034		1	390250.4	6257772		1	389069	6257203
1	388844.1	6258016		1	390266.3	6257751		1	389048.3	6257185
1	388864.3	6258024		1	390308.7	6257748		1	389040	6257164
1	388885.2	6258008		1	390320.1	6257768		1	389030.9	6257152
1	388893.7	6257943		1	390327.6	6257791		1	389035.4	6257151
1	388884.9	6257928		1	390355.3	6257814		1	389046	6257159

OFFICIAL

Specified area 1										
	easting	northing			easting	northing			easting	northing
1	388883.4	6257909	1		390360.8	6257830	1		389069	6257160
1	388913.4	6257856	1		390355.4	6257852	1		389075.8	6257156
1	388894.3	6257859	1		390366.3	6257857	1		389111.8	6257257
1	388878	6257873	1		390368.9	6257828	1		389142	6257244
1	388846.8	6257878	1		390364.1	6257791	1		389149.2	6257243
1	388842	6257892	1		390354.8	6257757	1		389126.5	6257269
1	388815.1	6257922	1		390337.1	6257742	1		389111.8	6257257
1	388776	6257917	1		390304.5	6257725	1		389101.5	6257368
1	388740.2	6257920	1		390297.2	6257713	1		389092.5	6257378
1	388732.4	6257899	1		390328	6257692	1		389084	6257377
1	388728.2	6257903	1		390313.3	6257676	1		389093.4	6257363
1	388727.3	6257901	1		390276	6257682	1		389098.7	6257361
1	388741.5	6257887	1		390243.3	6257683	1		389101.5	6257368
1	388741.7	6257865	1		390216.8	6257713	1		389034.4	6257925
1	388710.8	6257839	1		390216	6257722	1		389029.4	6257909
1	388746.6	6257811	1		390246.1	6257735	1		389064.6	6257921
1	388760.4	6257798	1		390243	6257746	1		389070.2	6257929
1	388761.1	6257793	1		390233.7	6257756	1		389053.7	6257942
1	388751.7	6257783	1		390194.5	6257759	1		389034.4	6257925
1	388743.4	6257783	1		390177.3	6257751	1		389016	6258109
1	388719.6	6257793	1		390155.9	6257749	1		389016.8	6258085
1	388715.6	6257724	1		390136.3	6257754	1		389013	6258074
1	388690.4	6257706	1		390124.8	6257753	1		389067.8	6258072
1	388693	6257684	1		390106.2	6257763	1		389060.3	6258091
1	388700.2	6257678	1		390082.6	6257770	1		389016	6258109
1	388732.3	6257667	1		390099.4	6257755	1		389007.8	6258099
1	388785.6	6257671	1		390124.2	6257742	1		389007.7	6258112
1	388860.6	6257696	1		390130.4	6257726	1		388938.9	6258139
1	388933.4	6257703	1		390114.1	6257715	1		388917.1	6258114
1	388943.5	6257701	1		390110.7	6257697	1		388996	6258074
1	388959	6257691	1		390120.4	6257698	1		388999.1	6258074
1	388983.9	6257691	1		390128.3	6257692	1		389003	6258080
1	389005.8	6257697	1		390145.9	6257688	1		389007.8	6258099
1	389019.7	6257725	1		390160.6	6257647	1		388887.5	6258261
1	389052.2	6257734	1		390125	6257644	1		388886	6258259
1	389063.6	6257724	1		390119.3	6257659	1		388886.5	6258259
1	389079.1	6257716	1		390073.5	6257634	1		388887.5	6258261
1	389072.2	6257741	1		390067.9	6257622	1		389221.7	6257275
1	389088.6	6257762	1		390074.9	6257603	1		389195.6	6257272
1	389099	6257733	1		390080	6257601	1		389150.6	6257275
1	389109.7	6257728	1		390006	6257589	1		389137.5	6257278
1	389142.3	6257729	1		389979.9	6257560	1		389133.6	6257275
1	389175.3	6257750	1		389939.2	6257591	1		389161.5	6257252
1	389187.6	6257754	1		389896.1	6257579	1		389182.2	6257254

OFFICIAL

Specified area 1										
	easting	northing			easting	northing			easting	northing
1	389206.9	6257732	1		389875.4	6257555	1		389208.4	6257247
1	389227.1	6257725	1		389701.3	6257520	1		389226.7	6257249
1	389313.7	6257724	1		389675.5	6257506	1		389245.6	6257258
1	389312.6	6257716	1		389589.7	6257573	1		389250.3	6257264
1	389375.5	6257705	1		389687.2	6257591	1		389242.5	6257273
1	389401	6257706	1		389752.6	6257612	1		389221.7	6257275
1	389439.3	6257725	1		389756.2	6257608	1		389253	6257282
1	389439.5	6257705	1		389801.6	6257592	1		389266.6	6257289
1	389461.1	6257692	1		389806.8	6257598	1		389309.9	6257279
1	389450	6257669	1		389797.9	6257615	1		389310	6257311
1	389450.4	6257642	1		389778.1	6257624	1		389269.4	6257329
1	389456.5	6257625	1		389881.5	6257677	1		389229.8	6257368
1	389476.1	6257618	1		389882	6257685	1		389213.9	6257359
1	389498	6257602	1		389943.9	6257709	1		389182.7	6257370
1	389535.8	6257681	1		389950.4	6257726	1		389160.5	6257336
1	389519.2	6257716	1		389950.9	6257744	1		389162.3	6257335
1	389479.6	6257735	1		389932.1	6257748	1		389145.7	6257333
1	389385.5	6257788	1		389898	6257723	1		389146.4	6257326
1	389180.4	6257779	1		389876.5	6257685	1		389173.5	6257287
1	389149.2	6257784	1		389759.5	6257634	1		389198.4	6257286
1	389124.9	6257797	1		389624.8	6257590	1		389221.5	6257295
1	389060.2	6257801	1		389631.8	6257612	1		389233.9	6257294
1	388991.8	6257838	1		389647.1	6257603	1		389253	6257282
1	388928.4	6257883	1		389761.2	6257655	1		389174.9	6257386
1	388919.7	6257907	1		389740.2	6257672	1		389167.3	6257399
1	388928	6257961	1		389719.2	6257673	1		389168.4	6257397
1	388890.8	6258030	1		389624.3	6257624	1		389122.3	6257383
1	388740.1	6258051	1		389611.1	6257603	1		389115.1	6257348
1	388746.2	6258062	1		389610.1	6257587	1		389153.2	6257340
1	388778.5	6258065	1		389496.8	6257568	1		389174.9	6257386
1	388815.1	6258099	1		389496.6	6257579	1		389302	6257559
1	388798.9	6258126	1		389493.3	6257543	1		389191.4	6257535
1	388741	6258097	1		389497.4	6257497	1		389150.7	6257515
1	388735.9	6258057	1		389460.9	6257502	1		389106.9	6257515
1	388715	6258071	1		389439.3	6257478	1		389090.3	6257489
1	388637.1	6258103	1		389436	6257471	1		389113.5	6257432
1	388641	6258213	1		389436.3	6257453	1		389098.6	6257436
1	388666.2	6258232	1		389398.1	6257422	1		389096.1	6257396
1	388690.1	6258255	1		389378.7	6257423	1		389164.7	6257406
1	388703.7	6258274	1		389341.6	6257385	1		389213.1	6257429
1	388758	6258269	1		389382.6	6257375	1		389244.8	6257450
1	388800	6258257	1		389428.5	6257408	1		389294.1	6257459
1	388836.5	6258260	1		389481.6	6257474	1		389392.2	6257522
1	388885.7	6258259	1		389496.7	6257451	1		389448.7	6257552

OFFICIAL

Specified area 1										
	easting	northing			easting	northing			easting	northing
1	388897.1	6258286	1		389496.5	6257418	1		389496.5	6257583
1	388934.5	6258298	1		389418.2	6257375	1		389496.3	6257590
1	388962.1	6258298	1		389375.9	6257339	1		389478	6257609
1	389046.6	6258327	1		389423.3	6257346	1		389466.2	6257601
1	389074	6258346	1		389497.3	6257392	1		389450.1	6257609
1	389109.4	6258379	1		389501.8	6257316	1		389402.9	6257593
1	389114.7	6258396	1		389537.4	6257297	1		389382.8	6257593
1	389153.1	6258394	1		389555.3	6257276	1		389302	6257559
1	389122	6258382	1		389590	6257280	1		389178.3	6257882
1	389101	6258359	1		389578.6	6257265	1		389183.3	6257911
1	389051.2	6258321	1		389556.7	6257259	1		389160.8	6257903
1	388999	6258298	1		389513.4	6257265	1		389150.5	6257892
1	388973.2	6258291	1		389469.2	6257243	1		389130.9	6257896
1	388936.3	6258289	1		389460.2	6257257	1		389100.7	6257889
1	388897.7	6258279	1		389439.9	6257263	1		389107.2	6257822
1	388888.8	6258264	1		389414.8	6257280	1		389167.9	6257851
1	388890.5	6258254	1		389407.2	6257271	1		389165.8	6257866
1	388895.4	6258255	1		389407.5	6257252	1		389178.3	6257882
1	388903.4	6258249	1		389423.6	6257237	1		389198.1	6257963
1	388898.8	6258243	1		389414.9	6257224	1		389207.8	6257956
1	388909.2	6258229	1		389396.5	6257227	1		389212.1	6257959
1	388954	6258221	1		389386.5	6257220	1		389206.8	6257978
1	388974.9	6258201	1		389355	6257229	1		389198.1	6257963
1	389051.4	6258213	1		389318.4	6257218	1		389185	6258193
1	388984.5	6258191	1		389309.9	6257236	1		389219.3	6258185
1	388918.9	6258163	1		389299.7	6257244	1		389219.6	6258184
1	388941.5	6258142	1		389278.9	6257250	1		389208	6258204
1	388939.5	6258140	1		389259.9	6257251	1		389187.3	6258202
1	389043.1	6258156	1		389245.2	6257245	1		389185	6258193
1	389052.6	6258164	1		389229.9	6257234	1		389951.1	6257556
1	389059.5	6258159	1		389221	6257234	1		389963.4	6257560
1	389084.4	6258203	1		389192.4	6257245	1		389963.6	6257569
1	389125.3	6258215	1		389159.4	6257233	1		389986.5	6257553
1	389125.3	6258196	1		389104	6257251	1		390012	6257501
1	389096.3	6258195	1		389066.9	6257234	1		389997.6	6257490
1	389083.6	6258164	1		389064.6	6257226	1		389993.1	6257498
1	389113.2	6258164	1		389071.8	6257219	1		390000.8	6257507
1	389134.3	6258183	1		389084.9	6257213	1		389985.1	6257543
1	389143.4	6258170	1		389121.2	6257203	1		389952.3	6257549
1	389080.4	6258090	1		389129.7	6257201	1		389951.1	6257556
1	389083.2	6258077	1		389141.5	6257206				
1	389102.9	6258082	1		389155.6	6257195				
1	389147.5	6258086	1		389190.5	6257209				
1	389138.5	6258100	1		389194.3	6257202				

OFFICIAL

Specified area 1										
	easting	northing			easting	northing			easting	northing
1	389136.8	6258116	1		389198.3	6257201				
1	389165.1	6258113	1		389224.5	6257208				
1	389146.9	6258143	1		389251.4	6257226				

Specified area 2										
	easting	northing			easting	northing			easting	northing
2	390050.7	6257536	2		390085.8	6257460	2		390080.7	6257453
2	390070.5	6257558	2		390115.5	6257462	2		390066.4	6257462
2	390079.1	6257561	2		390111.9	6257490	2		390065	6257468
2	390085.1	6257551	2		390121.9	6257492	2		390012.6	6257520
2	390082.3	6257541	2		390136.9	6257483	2		390041	6257505
2	390066.8	6257531	2		390128.9	6257462	2		390050.7	6257536
2	390058.4	6257513	2		390129.7	6257457				
2	390054.9	6257497	2		390103.1	6257447				

Specified area 3		
	easting	northing
3	390280.6	6257609
3	390325.2	6257614
3	390339.3	6257610
3	390310.1	6257566
3	390293	6257567
3	390283.1	6257580
3	390257.7	6257587
3	390259.1	6257601
3	390280.6	6257609

Specified area 4		
	easting	northing
4	390152.7	6257385
4	390129.5	6257381
4	390135.1	6257409
4	390164.5	6257415
4	390179.5	6257399
4	390156.9	6257397
4	390152.7	6257385

Specified area 5		
	easting	northing
5	389919	6257279
5	389888.9	6257275
5	389889.5	6257287
5	389919	6257279

Specified area 6		
	easting	northing
6	388687.9	6257179
6	388720.3	6257185
6	388733.8	6257183
6	388736.3	6257181
6	388735.4	6257171
6	388729.7	6257166
6	388714.3	6257162
6	388716.7	6257152
6	388673.4	6257145
6	388687.2	6257181

Specified area 7		
	easting	northing
7	389544.4	6256137
7	389590.6	6256127
7	389598.3	6256112
7	389528.3	6256118
7	389529.2	6256160
7	389544.4	6256137

Specified area 8		
	easting	northing
8	389550.2	6257137
8	389564.6	6257134
8	389605.6	6257091
8	389584.9	6257083
8	389535.8	6257079
8	389559.8	6257098
8	389571.3	6257126
8	389540	6257137
8	389525.8	6257137
8	389529.3	6257158
8	389540.1	6257162
8	389556.4	6257160
8	389546.7	6257147
8	389550.2	6257137

Specified area 9		
	easting	northing
9	389603.6	6257180
9	389609.5	6257164
9	389608.4	6257150
9	389595.8	6257140
9	389583	6257142
9	389583.7	6257174
9	389603.6	6257180

Specified area 10		
	easting	northing
10	389632.6	6257179
10	389624.9	6257165
10	389624.9	6257153
10	389621.9	6257152
10	389614.9	6257160
10	389611.4	6257175
10	389632.6	6257179

Specified area 13		
	easting	northing
13	389679.7	6257064
13	389675.3	6257074
13	389676.1	6257086
13	389649.4	6257122
13	389647.1	6257133
13	389632.6	6257150
13	389636.1	6257180
13	389670.9	6257179
13	389685.8	6257183
13	389706.9	6257158
13	389714.4	6257136
13	389742.7	6257156
13	389750.3	6257153
13	389719.5	6257124
13	389704.3	6257122
13	389693.1	6257126
13	389695.1	6257131
13	389671	6257173
13	389642.5	6257173
13	389640	6257168
13	389646.2	6257160
13	389653.8	6257160
13	389659.5	6257149
13	389656.2	6257129
13	389672.9	6257103
13	389704.4	6257102
13	389715.4	6257117
13	389722.7	6257107
13	389744.9	6257105
13	389756.7	6257113
13	389786.7	6257092
13	389783.4	6257088
13	389775.4	6257092
13	389719.5	6257079
13	389706	6257061
13	389679.7	6257064

Specified area 11		
	easting	northing
11	389617	6257140
11	389630	6257132
11	389630.8	6257122
11	389622.4	6257109
11	389609.7	6257112
11	389624.7	6257125
11	389622.7	6257132
11	389612.6	6257137
11	389617	6257140

Specified area 14		
	easting	northing
14	389565.5	6257032
14	389543.6	6257052
14	389548.6	6257058
14	389579.5	6257037
14	389584.4	6257016
14	389562.7	6257013
14	389565.5	6257032

Specified area 12		
	easting	northing
12	389647.5	6257115
12	389669.4	6257084
12	389661.7	6257078
12	389638.5	6257091
12	389629.5	6257106
12	389638.5	6257122
12	389647.5	6257115

Specified area 15		
	easting	northing
15	389579.4	6256989
15	389590	6256999
15	389601.8	6256982
15	389589.1	6256982
15	389581.3	6256985
15	389579.4	6256989

Specified area 16					
	easting	northing		easting	northing
16	389920.9	6256971	16	389929.8	6256975
16	389910.6	6256967	16	389936.4	6256957
16	389911.5	6256955	16	389926	6256955
16	389898.7	6256956	16	389920.9	6256971
16	389895.4	6256949	16	389690.1	6256999
16	389887.2	6256968	16	389676	6257016
16	389866.7	6256974	16	389690.2	6257023
16	389859.1	6256985	16	389703.9	6257016
16	389860	6257010	16	389703.2	6257026
16	389836.3	6257026	16	389690.3	6257028
16	389767.7	6257013	16	389678.2	6257034
16	389735.6	6257015	16	389675.1	6257024
16	389676	6256973	16	389661.6	6257022
16	389615.8	6256979	16	389677.5	6256992
16	389610.3	6256980	16	389690.1	6256999
16	389590.2	6257018			
16	389586.2	6257036			
16	389576.7	6257053			
16	389565	6257055			
16	389559.6	6257060			
16	389557.8	6257068			
16	389614.8	6257080			
16	389626.1	6257093			
16	389671.9	6257062			
16	389673.6	6257048			
16	389685.5	6257047			
16	389689.1	6257055			
16	389748	6257042			
16	389773.5	6257031			
16	389837.7	6257029			
16	389846.1	6257040			
16	389858.6	6257024			
16	389872.1	6257013			
16	389888.9	6257005			
16	389902.7	6257005			
16	389953.8	6257021			
16	389957	6257007			
16	389952.6	6257003			

Specified area 17		
	easting	northing
17	389534.9	6256987
17	389556.4	6256962
17	389578.2	6256962
17	389591.5	6256951
17	389613.7	6256944
17	389613.2	6256938
17	389592.5	6256945
17	389571.5	6256931
17	389549.2	6256945
17	389523.2	6256940
17	389520.9	6256988
17	389534.9	6256987

Specified area 18		
	easting	northing
18	389624.5	6256921
18	389615	6256923
18	389620.4	6256934
18	389630.4	6256942
18	389635.4	6256941
18	389656.6	6256908
18	389671.7	6256918
18	389682	6256898
18	389678.7	6256889
18	389640.4	6256895
18	389629.3	6256901
18	389624.5	6256921

Specified area 19		
	easting	northing
19	389609.4	6256887
19	389588.9	6256885
19	389578.8	6256892
19	389604.8	6256895
19	389609.4	6256887

OFFICIAL

16	389957.2	6256988
16	389946.4	6256986
16	389945	6256979

Specified area 20								
	easting	northing		easting	northing		easting	northing
20	390201.2	6256960	20	390207.2	6256993	20	390325.1	6256943
20	390171.2	6256952	20	390216.7	6256993	20	390306.1	6256952
20	390156.9	6256937	20	390227.4	6256992	20	390302.2	6256946
20	390143	6256941	20	390230.1	6256980	20	390237	6256947
20	390138.4	6256907	20	390223.3	6256967	20	390237.8	6256923
20	390105.4	6256915	20	390231.2	6256961	20	390243.5	6256915
20	390076.6	6256928	20	390347.1	6256959	20	390256.3	6256908
20	390063.6	6256940	20	390373	6256951	20	390209.8	6256903
20	390069.6	6256946	20	390397.8	6256937	20	390203.3	6256912
20	390075.9	6256948	20	390398.7	6256905	20	390180.3	6256925
20	390079.8	6256939	20	390393.5	6256896	20	390199.5	6256930
20	390098.7	6256934	20	390341	6256884	20	390205.5	6256924
20	390113	6256937	20	390335.1	6256899	20	390214.9	6256930
20	390151.2	6256953	20	390345.9	6256908	20	390221.8	6256944
20	390161.1	6256970	20	390337.4	6256921	20	390213.1	6256956
20	390175.7	6256969	20	390339.2	6256942	20	390201.2	6256960

Specified area 21								
	easting	northing		easting	northing		easting	northing
21	390768.3	6256975	21	390573.8	6257137	21	390621.4	6257289
21	390781.5	6256995	21	390601.2	6257169	21	390592.4	6257269
21	390800.3	6257012	21	390601.5	6257194	21	390591.7	6257237
21	390809	6257034	21	390592.6	6257211	21	390609.8	6257224
21	390807.6	6257068	21	390571.7	6257274	21	390671	6257209
21	390750.3	6257092	21	390487.3	6257297	21	390720.9	6257204
21	390700.9	6257096	21	390465.8	6257367	21	390749.2	6257188
21	390701.4	6257106	21	390600.4	6257408	21	390779.1	6257116
21	390678.9	6257107	21	390645.7	6257418	21	390789.7	6257120
21	390706.9	6257051	21	390710.7	6257410	21	390793.3	6257096
21	390673.5	6257028	21	390714.3	6257396	21	390809.4	6257084
21	390688.4	6257009	21	390707.9	6257365	21	390824.1	6257060
21	390685.3	6256988	21	390716.7	6257334	21	390826.5	6257028
21	390652.5	6256971	21	390732.7	6257306	21	390815.2	6257010
21	390625.8	6256945	21	390742.7	6257293	21	390794.5	6256988
21	390597.8	6256974	21	390765.7	6257288	21	390765.8	6256934
21	390603.5	6256993	21	390818.8	6257263	21	390755.4	6256925
21	390623.1	6256999	21	390812	6257249	21	390756.6	6256908
21	390652	6257036	21	390765.4	6257269	21	390769.2	6256890
21	390668.6	6257101	21	390744.1	6257258	21	390691.4	6256893
21	390628.7	6257113	21	390744.8	6257240	21	390692.7	6256909
21	390603.7	6257050	21	390717.4	6257233	21	390730.2	6256901
21	390589.5	6257037	21	390721	6257275	21	390740.2	6256905

OFFICIAL

21	390570.2	6257062		21	390716.8	6257300		21	390748	6256915
21	390578.9	6257076		21	390669.3	6257308		21	390768.3	6256975
21	390580.1	6257099		21	390652.7	6257289				

Specified area 22										
	easting	northing			easting	northing			easting	northing
22	389735.6	6256702		22	389745.5	6256706		22	389855.3	6256755
22	389719.2	6256845		22	389773.9	6256717		22	389844.6	6256755
22	389732.9	6256852		22	389799.3	6256745		22	389836.4	6256749
22	389811.5	6256849		22	389814.4	6256753		22	389841.4	6256736
22	389813.2	6256826		22	389823.4	6256781		22	389818.3	6256706
22	389797.3	6256819		22	389837	6256796		22	389805.2	6256681
22	389788.2	6256805		22	389852.2	6256805		22	389774.1	6256641
22	389783.3	6256777		22	389867.6	6256856		22	389758.7	6256649
22	389762.7	6256749		22	389940.1	6256854		22	389742.4	6256676
22	389762.5	6256736		22	389942.7	6256827		22	389735.6	6256702
22	389776.4	6256723		22	389922.3	6256796				
22	389761.9	6256722		22	389895.8	6256793				


Specified area 23										
	easting	northing			easting	northing			easting	northing
23	389713.6	6256309		23	389730.6	6256568		23	389842	6256535
23	389735	6256310		23	389697.7	6256614		23	389844.6	6256528
23	389737.3	6256313		23	389692.1	6256649		23	389851.6	6256532
23	389773.8	6256309		23	389693.1	6256658		23	389873.2	6256534
23	389784.1	6256318		23	389697.5	6256663		23	389885.9	6256530
23	389766.9	6256329		23	389690.8	6256671		23	389894.7	6256537
23	389749.3	6256328		23	389673.9	6256677		23	389917.3	6256543
23	389742.7	6256337		23	389673.6	6256705		23	389933.4	6256535
23	389745.4	6256341		23	389663.2	6256705		23	389942.1	6256525
23	389742.2	6256343		23	389643	6256682		23	389942.2	6256513
23	389768.9	6256353		23	389624.6	6256694		23	389931.8	6256511
23	389778.9	6256387		23	389598.9	6256695		23	389915.1	6256513
23	389774.8	6256399		23	389570	6256687		23	389860.8	6256511
23	389706.3	6256396		23	389547.3	6256685		23	389833.6	6256498
23	389690.5	6256375		23	389516.7	6256674		23	389809.4	6256498
23	389654	6256376		23	389516.4	6256738		23	389793.4	6256517
23	389629.6	6256359		23	389561.2	6256742		23	389757.4	6256530
23	389584.9	6256320		23	389573.3	6256760		23	389758.4	6256486
23	389582.5	6256303		23	389577.9	6256777		23	389785.5	6256457
23	389604.6	6256311		23	389580.4	6256790		23	389757.6	6256427
23	389618.5	6256301		23	389574.2	6256817		23	389729.9	6256415
23	389618.8	6256294		23	389555.3	6256837		23	389715.5	6256405

OFFICIAL

Specified area 23									
	easting	northing		easting	northing		easting	northing	
23	389600.6	6256296		23	389550.3	6256846	23	389745.7	6256402
23	389606.3	6256276		23	389559.4	6256863	23	389771.9	6256415
23	389602.2	6256263		23	389573.9	6256863	23	389802.8	6256412
23	389576.8	6256243		23	389578.1	6256852	23	389801.4	6256430
23	389547.2	6256230		23	389602.7	6256851	23	389839.3	6256432
23	389526.5	6256216		23	389606.7	6256859	23	389838.5	6256416
23	389524	6256257		23	389649.1	6256861	23	389816.1	6256414
23	389572.3	6256265		23	389645.2	6256843	23	389816.7	6256397
23	389574.8	6256303		23	389632.7	6256829	23	389855.9	6256378
23	389567.3	6256322		23	389610.8	6256825	23	389866.8	6256377
23	389547	6256325		23	389603.7	6256830	23	389857.5	6256366
23	389524.6	6256318		23	389601	6256839	23	389844	6256364
23	389523.7	6256368		23	389589.1	6256837	23	389828.4	6256377
23	389519.1	6256375		23	389579.2	6256829	23	389810.5	6256377
23	389516	6256374		23	389593.4	6256820	23	389803	6256383
23	389519.6	6256604		23	389601.5	6256799	23	389780.6	6256369
23	389545.3	6256605		23	389600.7	6256788	23	389777.3	6256341
23	389552.5	6256622		23	389616.8	6256789	23	389797.3	6256337
23	389571.8	6256632		23	389621.2	6256797	23	389828.4	6256347
23	389595.3	6256653		23	389620.6	6256817	23	389878.3	6256350
23	389616.2	6256651		23	389631.7	6256818	23	389889.3	6256422
23	389573.4	6256621		23	389644.7	6256827	23	389862.2	6256454
23	389558	6256596		23	389666.3	6256856	23	389870.9	6256457
23	389560.1	6256581		23	389694.3	6256847	23	389870.2	6256473
23	389577.7	6256566		23	389706.5	6256823	23	389889.2	6256474
23	389612.3	6256568		23	389716.3	6256813	23	389888.8	6256454
23	389622.2	6256554		23	389708.2	6256803	23	389965.7	6256450
23	389612.7	6256535		23	389707.2	6256792	23	389933.8	6256438
23	389622.8	6256527		23	389699.5	6256785	23	389914.7	6256416
23	389656.8	6256517		23	389676.8	6256782	23	389956.5	6256408
23	389678.4	6256517		23	389664.6	6256773	23	389971.5	6256399
23	389684.3	6256525		23	389646	6256776	23	389973.9	6256120
23	389694.7	6256520		23	389626.3	6256772	23	389720.2	6256120
23	389688.2	6256510		23	389600.6	6256775	23	389766.7	6256156
23	389670.4	6256502		23	389598.5	6256766	23	389777.6	6256172
23	389648.1	6256502		23	389613.8	6256760	23	389674.9	6256162
23	389636.8	6256513		23	389642.5	6256761	23	389682.5	6256133
23	389629	6256506		23	389669.9	6256770	23	389644.1	6256132
23	389645.2	6256456		23	389706	6256764	23	389625.8	6256164
23	389635	6256439		23	389713.9	6256759	23	389671	6256178
23	389610.1	6256440		23	389724	6256688	23	389673.6	6256168
23	389588.4	6256445		23	389701.1	6256679	23	389700.1	6256189
23	389577.8	6256431		23	389705.2	6256671	23	389719.9	6256214
23	389559.4	6256416		23	389728.6	6256680	23	389733.4	6256210

OFFICIAL

Specified area 23										
	easting	northing			easting	northing			easting	northing
23	389530	6256417		23	389735.9	6256658		23	389737.1	6256239
23	389528	6256395		23	389760.2	6256621		23	389724.2	6256259
23	389529.6	6256386		23	389753.6	6256575		23	389732	6256293
23	389535.3	6256382		23	389741.2	6256535		23	389709.6	6256289
23	389535.3	6256375		23	389756.3	6256532		23	389713.6	6256309
23	389527.2	6256342		23	389770.6	6256588		23	389826.5	6256529
23	389564.6	6256352		23	389800.9	6256633		23	389812.1	6256523
23	389593.8	6256372		23	389826.3	6256693		23	389813.1	6256517
23	389616	6256383		23	389850.4	6256729		23	389825.8	6256521
23	389642.5	6256403		23	389888.7	6256768		23	389826.5	6256529
23	389689.5	6256454		23	389915.8	6256773		23	389578.9	6256813
23	389741.8	6256479		23	389962.3	6256821		23	389579	6256813
23	389729.1	6256537		23	389967	6256555		23	389577.6	6256814
23	389739.5	6256535		23	389893.2	6256557		23	389578.9	6256813
23	389733.2	6256544		23	389882.3	6256549				



Ruth Dowd

Executive Director

Assurance

Officer delegated under Section 20

of the Environmental Protection Act 1986

16 June 2026

Important Information:

A PERSON WHO IS BOUND BY THIS VEGETATION CONSERVATION NOTICE AND WHO DOES NOT COMPLY WITH THIS VEGETATION CONSERVATION NOTICE COMMITS AN OFFENCE UNDER THE *ENVIRONMENTAL PROTECTION ACT 1986*.

Under section 103 of the *Environmental Protection Act 1986*:

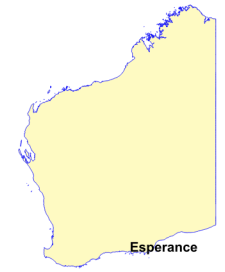
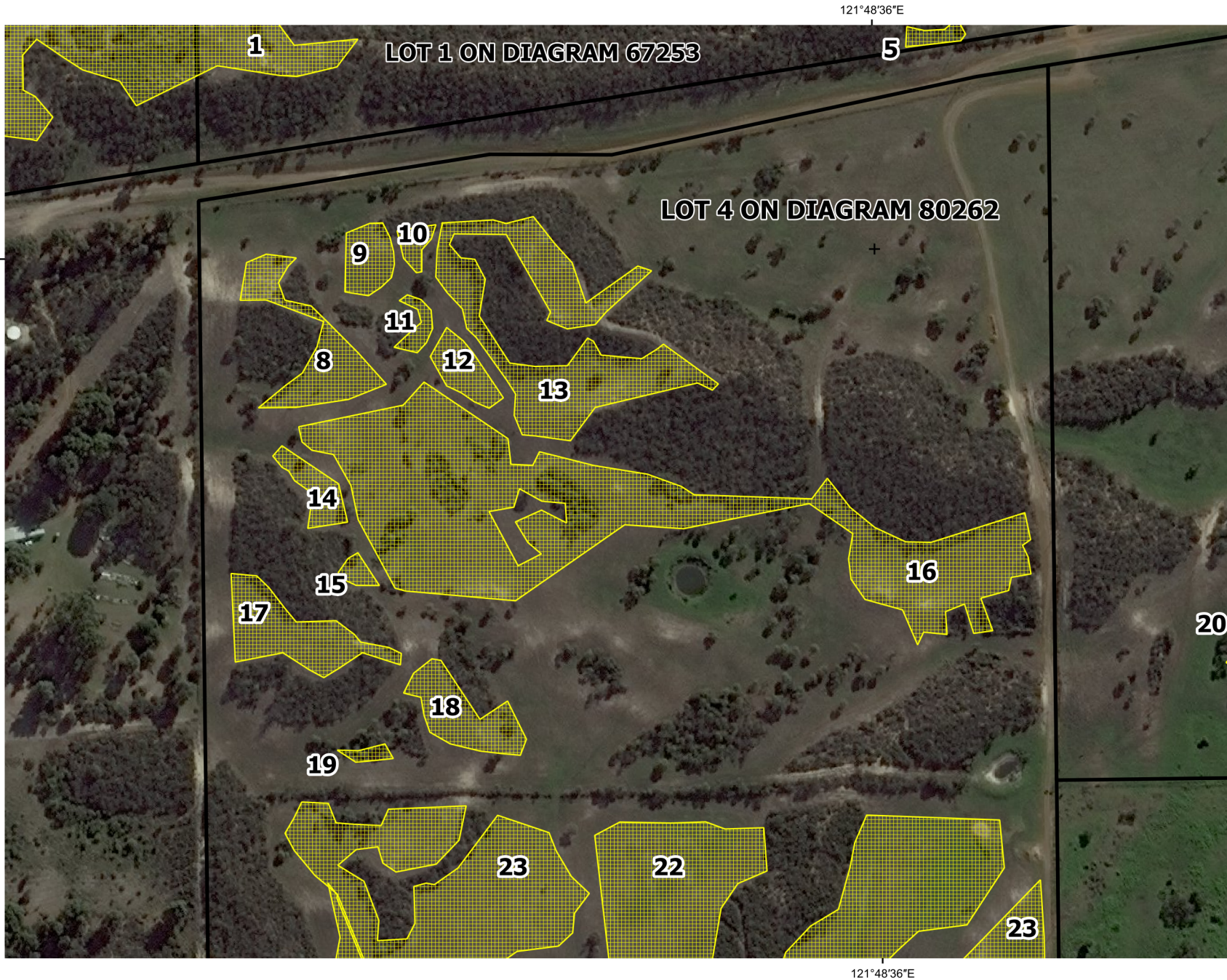
- a person who is aggrieved by a requirement contained in this vegetation conservation notice may within 21 days of being given this notice lodge with the Minister for Environment an appeal in writing setting out the grounds of that appeal; and
- any other person who disagrees with a requirement contained in this vegetation conservation notice may within 21 days of the making of that requirement lodge with the Minister for Environment an appeal in writing setting out the grounds of that appeal.

PENDING THE DETERMINATION OF AN APPEAL REFERRED TO ABOVE, THE RELEVANT REQUIREMENTS CONTAINED IN THIS VEGETATION CONSERVATION NOTICE CONTINUE TO HAVE EFFECT.



Revoking the VCN

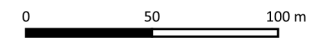
Should all requirements of this VCN be fulfilled, the CEO may, by notice in writing, revoke the VCN under section 65(4) of the *Environmental Protection Act 1986* (as referenced by section 70(9)).

CPS 11525/1 Specified Area - Lot 4 Enlarged



LEGEND

-  Land Tenure
-  Specified Area

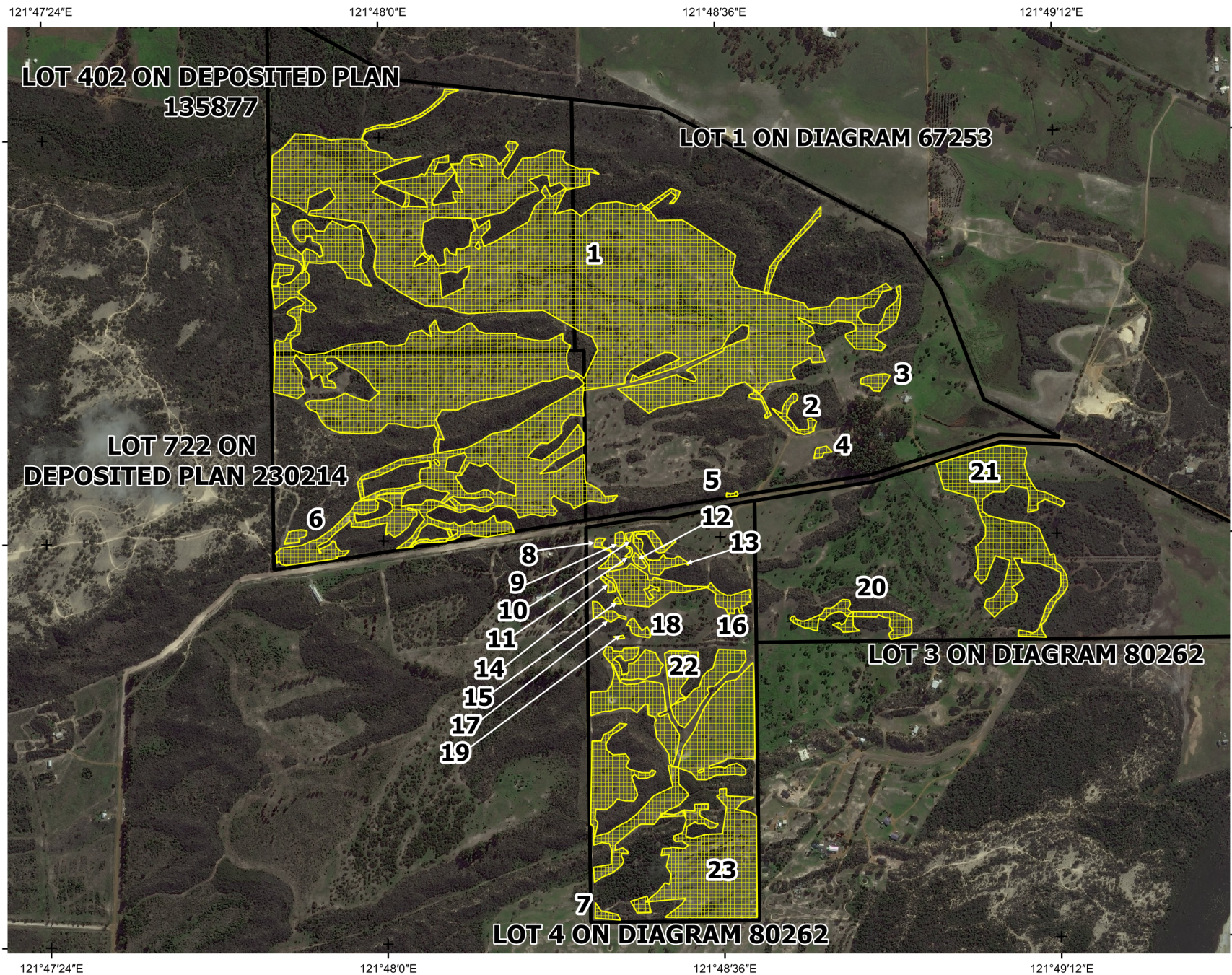
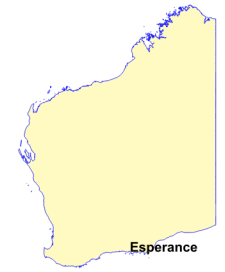


1:3,000

Projection: GDA2020 / MGA zone 51

Disclaimer: This map is used as a generic static output for reference purposes. Information on this map may or may not be accurate, current, or otherwise reliable. While the Department of Water and Environmental Regulation, has made all reasonable efforts to ensure the accuracy of this data, the department accepts no responsibility for any inaccuracies and persons relying on this data do so at their own risk.

CPS 11525/1 Specified Area



LEGEND

- Land Tenure
- Specified Area

North arrow pointing up.

1:15,000
Projection: GDA2020 / MGA zone 51

Disclaimer: This map is used as a generic static output for reference purposes. Information on this map may or may not be accurate, current, or otherwise reliable. While the Department of Water and Environmental Regulation, has made all reasonable efforts to ensure the accuracy of this data, the department accepts no responsibility for any inaccuracies and persons relying on this data do so at their own risk.

