



# Quarterly performance report


Land use planning advice

1 January to 31 March 2013

April 2013



Department of  
**Environment and Conservation**

*Our environment, our future* 

Department of Environment and Conservation  
168 St Georges Terrace  
Perth WA 6000  
Phone: +61-8-6467 5000  
Fax: +61-8-6467 5562  
[www.dec.wa.gov.au](http://www.dec.wa.gov.au)

© State of Western Australia 2013

April 2013

All material is the copyright of the Department of Environment and Conservation. No part of the contents of the publication may be reproduced without the consent of this agency.

Questions regarding this report should be directed to:  
Land Planning Program  
Department of Environment and Conservation  
Locked Bag 104  
Bentley Delivery Centre  
Western Australia 6983

Phone: (08) 9423 2983  
Email: [sean.walsh@dec.wa.gov.au](mailto:sean.walsh@dec.wa.gov.au)

# Contents

Purpose of report .....	1
Environmental planning advice .....	1
Timeframes .....	1
Planning proposals received .....	2
Subdivision applications .....	3
Condition clearance requests .....	5

## Figures

Figure 1 Subdivision applications received from WAPC (South West and Swan regions) .....	3
Figure 2 Average response time for subdivision applications (South West and Swan regions) ...	4
Figure 3 Clearance requests received (South West and Swan regions) .....	5
Figure 4 Average response time for clearance requests (South West and Swan regions) .....	6
Figure 5 Clearance requests between April 2012 and March 2013 grouped by response time (South West and Swan regions) .....	6

## Tables

Table 1 Planning proposals received by the South West and Swan regions from 1 January to 31 March 2013 .....	2
---	---

## Purpose of report

This report, prepared by the Land Planning Program, provides statistics on responses to requests for environmental advice on planning and development applications received by the South West and Swan regions of the Department of Environment and Conservation (DEC). These regions receive approximately 80 per cent of all planning referrals to DEC. Over time, data for other DEC regions will be included in this report.

## Environmental planning advice

Western Australia's land use planning system coordinates planning, land use and development through the review, approval and monitoring of planning schemes, policies, strategies, structure plans and subdivision and development applications. Land use planning policy and decision-making are largely the responsibility of the Western Australian Planning Commission (WAPC), the Department of Planning, local governments and redevelopment authorities.

DEC has an important role in advising land use planning decision-makers on environmental planning issues relating to nature conservation, DEC-managed areas, site contamination and pollution management. Requests for advice are mainly received from WAPC, followed by local government authorities and other government agencies. Advice is coordinated by staff in DEC regions. Further information on the department's role in land use planning can be found at [www.dec.wa.gov.au](http://www.dec.wa.gov.au).

## Timeframes

The timeframe for planning advice commences from the date a planning proposal is received and ends on the date that written advice is provided by the department. Advice may consist of technical information, the significance of impacts on the environment, recommendations for changes to a plan or report, conditions to be placed on the proposal, advice that a proposal is unacceptable in its current form, or advice that there are no specific issues requiring DEC advice.

The timeframe for a response is defined by the planning authority that refers the proposal, and this varies depending on the type of proposal. The DEC target timeframe is generally to respond within the specified timeframe.

## Planning proposals received

The approximate number of planning proposals received by the South West and Swan regions, grouped into the main categories of referral, was as follows:

*Table 1 Planning proposals received by the South West and Swan regions from 1 January to 31 March 2013*

Region	Development application	Planning scheme/ amendment	Structure plan/ planning strategy	Subdivision	Utilities, infrastructure and roads	Total
South West	21	4	7	58	4	94
Swan	84	13	22	102	6	227
TOTAL	105	17	29	160	10	321

Note: a number of other types of referrals that are received by DEC are not included in the table above.

# Subdivision applications

Subdivision applications from WAPC represent the most common type of planning proposal sent to DEC. These applications have a statutory 42-day requirement for a response by referral agencies such as DEC. The figure below summarises the combined monthly total of subdivision referrals received by South West and Swan regions during the previous 12 months.

*Figure 1 Subdivision applications received from WAPC (South West and Swan regions)*

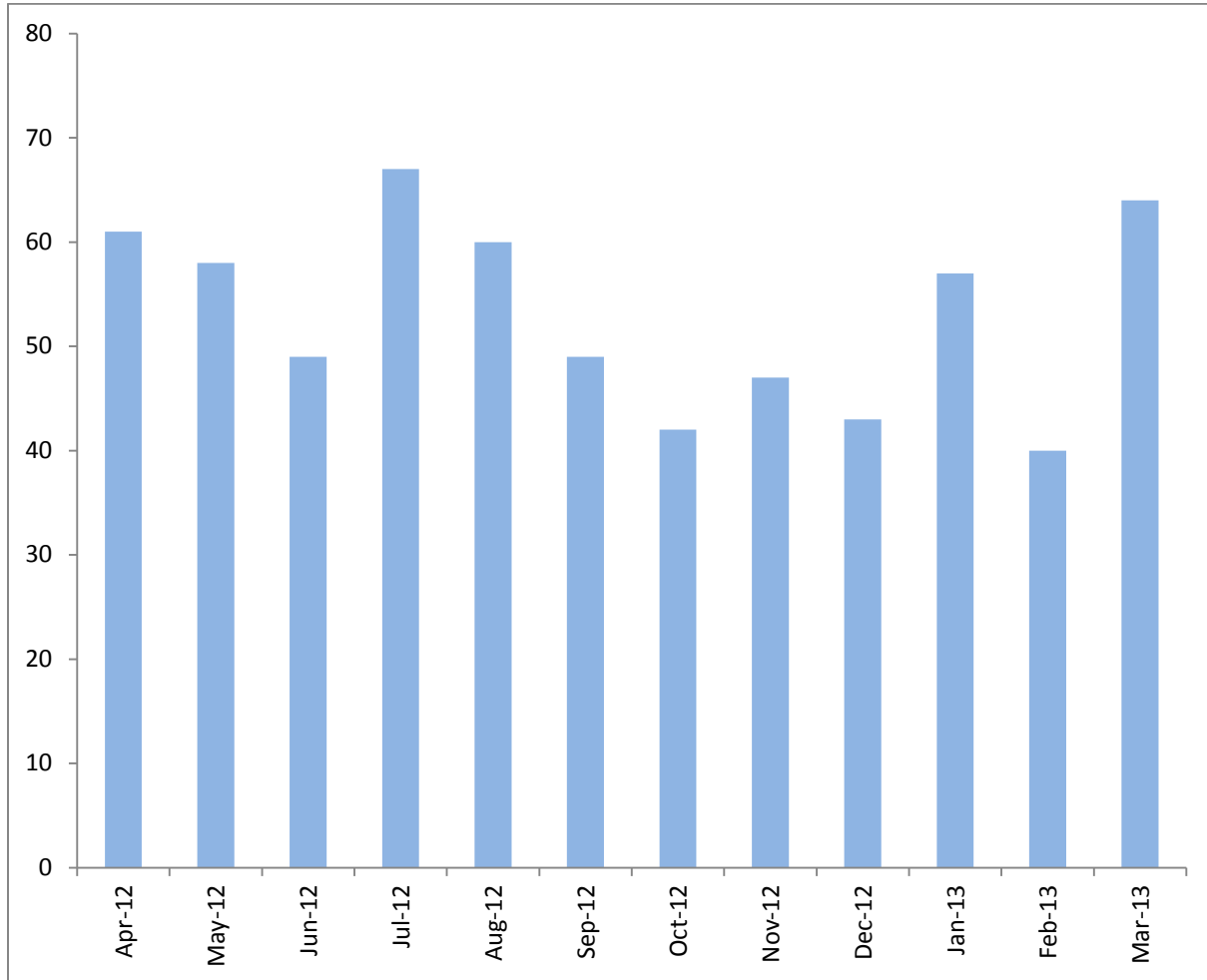
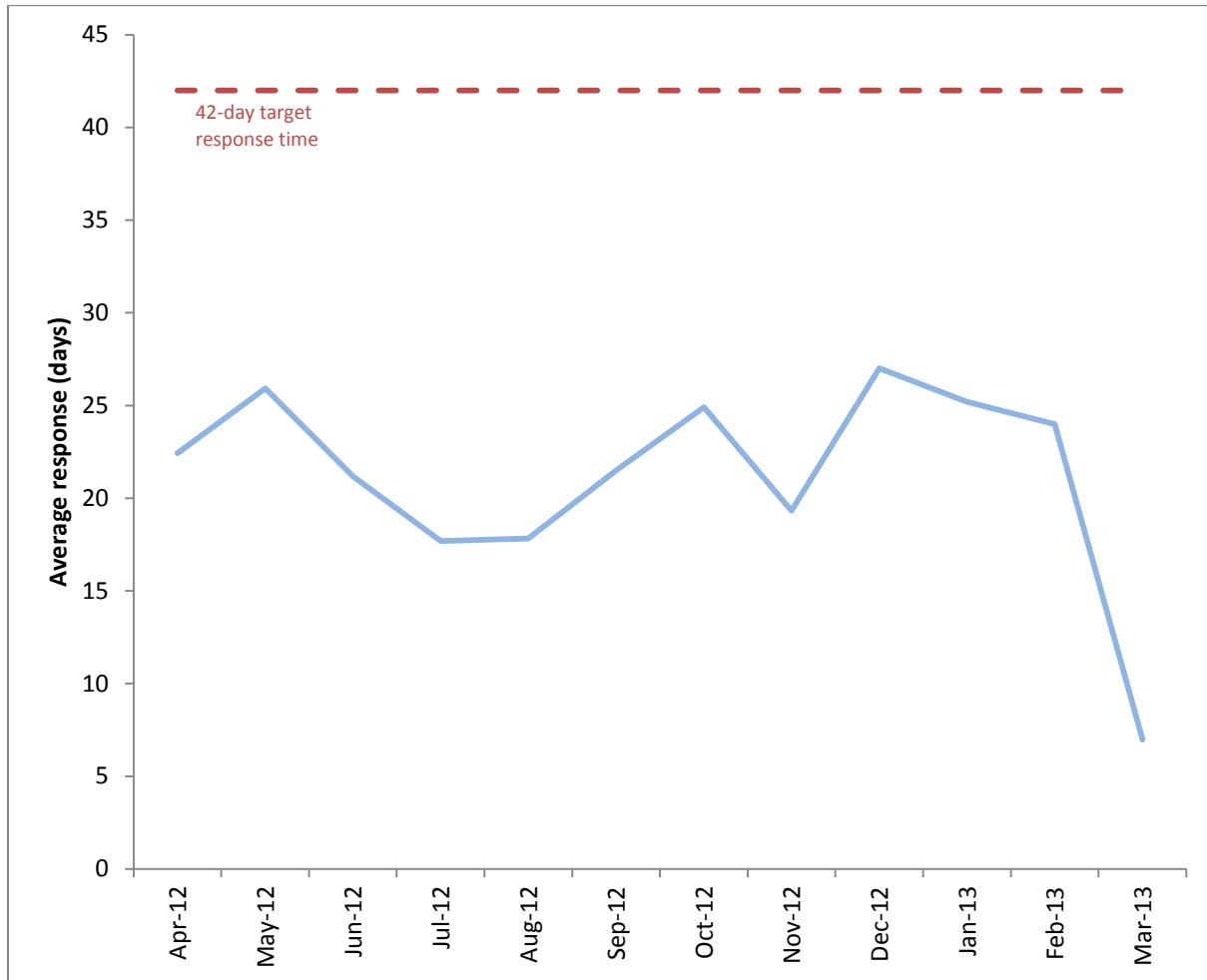


Figure 2 summarises the average number of days taken to respond to subdivision referrals received by the South West and Swan regions during the previous 12 months.

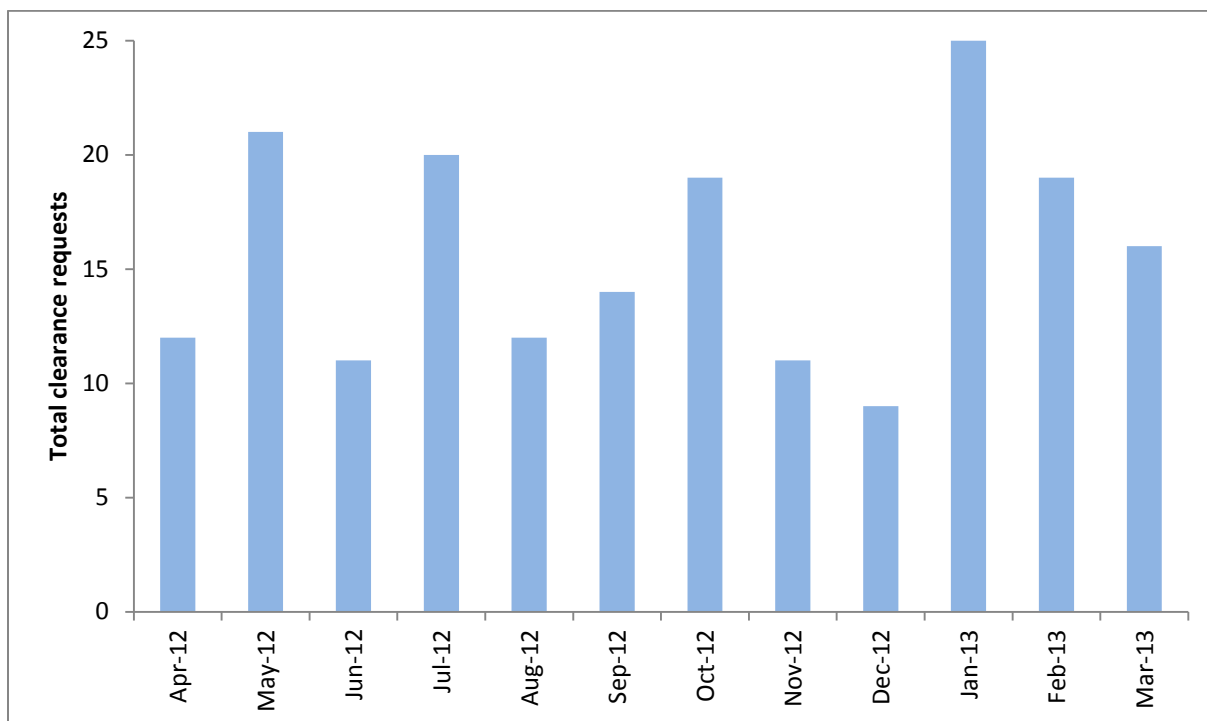
Figure 2 Average response time for subdivision applications (South West and Swan regions)



## Condition clearance requests

Where approval to subdivide is granted by WAPC, conditions may be applied. Conditions are allotted a clearing authority (such as DEC) to assess whether conditions have been fulfilled and to provide clearance of each. Typical conditions requiring clearance by DEC include the preparation and implementation of management plans for environmentally sensitive areas. The figure below summarises the combined monthly total of clearance requests received by the South West and Swan regions during the previous 12 months. A single clearance request may apply to multiple conditions.

*Figure 3 Clearance requests received (South West and Swan regions)*



The figures below summarise the approximate number of days taken to process clearance requests during the previous 12-month period. Assessment time includes time taken by applicants to provide additional information if required by DEC before a clearance can be issued.



Figure 4 Average response time for clearance requests (South West and Swan regions)

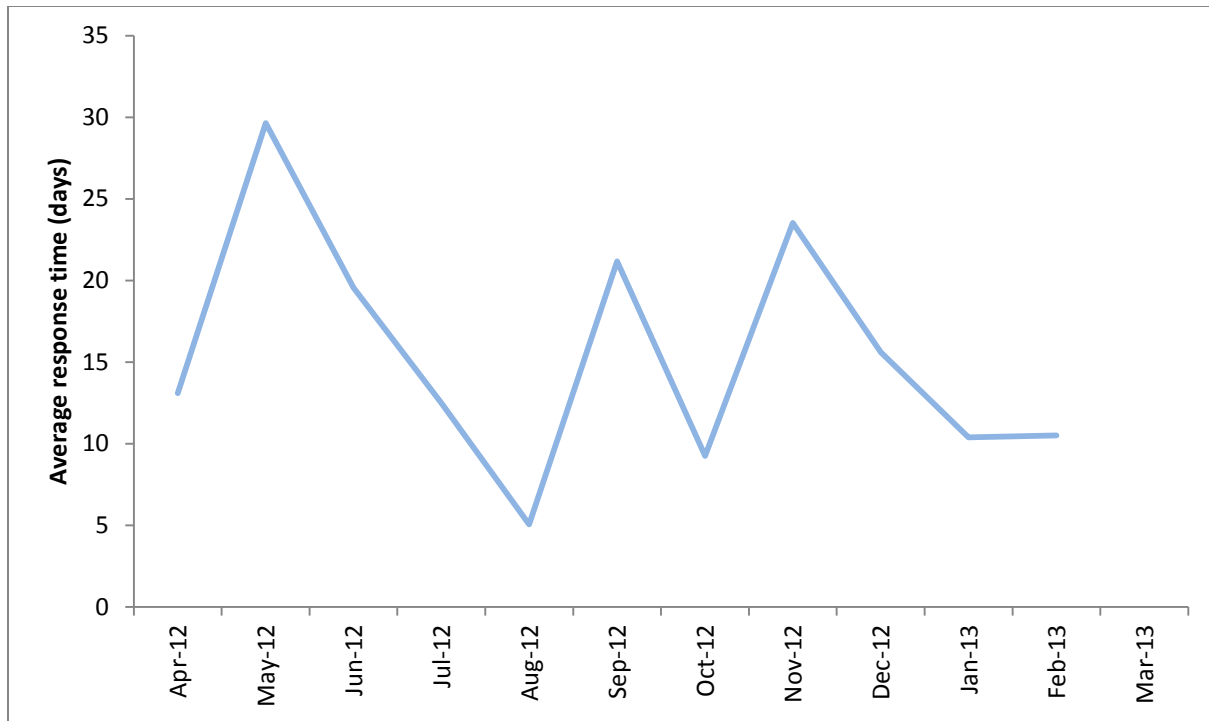


Figure 5 Clearance requests between April 2012 and March 2013 grouped by response time (South West and Swan regions)

