

Schedule 8 – Part 1

Church Site on Palmer Road (Map 25)

All that land comprising Lot 2618 as shown on Deposited Plan 217483.

Part Cable Beach West (Map 26)

Portion 1

All that land commencing from the intersection of the northern boundary of Lot 503 as shown on Deposited Plan 61564 with Longitude 122.216904 East and extending generally southeasterly and generally southwesterly along boundaries of that lot to Latitude 17.938482 South; Then northwesterly to Latitude 17.937850 South, Longitude 122.215821 East and then northeasterly back to the commencement point.

Portion 2

All that land commencing from the intersection of a western boundary of Lot 503 as shown on Deposited Plan 61564 with Latitude 17.938985 South and extending easterly to a eastern boundary of Lot 503 as shown on Deposited Plan 61564 at Latitude 17.938997 South and then generally southwesterly, generally northwesterly and generally northerly along boundaries of that lot back to the commencement point.

Part Coconut Wells North (Map27)

All that land commencing from the intersection of a eastern side of Lawrence Road with Latitude 17.815971 South and extending easterly and southerly through the following coordinate positions:

LATITUDE (SOUTH)	LONGITUDE (EAST)
17.816062	122.239517
17.820581	122.239498

Then westerly to the eastern side of Lawrence Road at Latitude 17.820498 South and then generally northerly along sides of that road back to the commencement point.

Exclusions from Part Coconut Wells North

Dedicated Road within the external extent, being Road No 6863.

Lots 12 and 14 Blick Drive (Map 28)

All that land comprising Lot 733 and Lot 734 as shown on Deposited Plan 210085.

Broome Road Airport Site (Map 29)

All that land commencing from the intersection of the eastern boundary of the southern severance of Reserve 25716 with Latitude 17.884544 South and extending southeasterly and southerly through the following coordinate positions:

LATITUDE (SOUTH)	LONGITUDE (EAST)
17.888850	122.341254
17.905446	122.341193

Then northwesterly to a western boundary of Pastoral Lease 3114/499 (Roebuck Plains) at Latitude 17.904282 South and then northerly, westerly, again northerly,

easterly and again northerly along boundaries of that pastoral lease back to the commencement point.

AMENDMENTS
① AL2093 Oz. 16-93
Pg. 256.





HELD BY LANDGATE
IN DIGITAL FORM ONLY.

VERSION	AMENDMENT	AUTHORISED BY	DATE
---------	-----------	---------------	------

TYPE CROWN	
PURPOSE SUBDIVISION	
PLAN OF LOT 503	
SSA YES/NO	
DISTRICT DAMPIER	TOWNSITE BROOME
FILE 00754 - 2008 - 02	
LOCAL AUTHORITY SHIRE OF BROOME	
LOCALITY CABLE BEACH	
FORMER TENURE SEE TABLE	ON INDEX CG72(10) 6 3
SCALE: 1 : 2000 at A2 ALL DISTANCE ARE IN METRES	FIELD BOOK COMPILED
SURVEYOR'S CERTIFICATE - Reg 54 I hereby certify that this plan is accurate and is a correct representation of the survey, and (a) calculations from measurements, (b) data if applicable, undertaken for the purposes of this plan and that it complies with the relevant law in relation to which it is lodged.	SURVEYOR'S CERTIFICATE - Compiled I, K. H. PIPER hereby certify that this compiled plan is a correct and accurate representation of the survey(s) of subject land, and (b) in accordance with the relevant law in relation to which it is lodged.
Comd Surveyor Date	Licensed Surveyor Date
APPROVED BY WESTERN AUSTRALIAN PLANNING COMMISSION	
FILE EXEMPT FROM WAPC APPROVAL DELEGATED UNDER S 18 OF THE P & D ACT 2005	
DATE	
LOADED DATE 1-Oct-08	TYPE OF VALIDATION REALM LEGAL DISPOSABLE G.G.M. BOOK 1770-2005/16 CLASSIFIED GEOGRAPHIC I.S.1 I.S.C. I.S.E. I.S.C.
BY ORDER FOR DEALINGS SUBJECT TO	
FOR INSPECTOR OF PLANS & SURVEYS DATE AUTHORIZED LAND OFFICER	
APPROVED INSPECTOR OF PLANS & SURVEYS DATE AUTHORIZED LAND OFFICER	
Landgate Western Australian Land Information Authority	
DEPOSITED PLAN 61564	
SHEET 1 OF 1 VERSION 1	

COMPILED FROM DP's 184343, 188576, 189833, 213844 & 216955

LOT	FORMER TENURE	ON PLANDIAGRAM	TITLE
503	UCL CLOSED ROAD	DP218955	

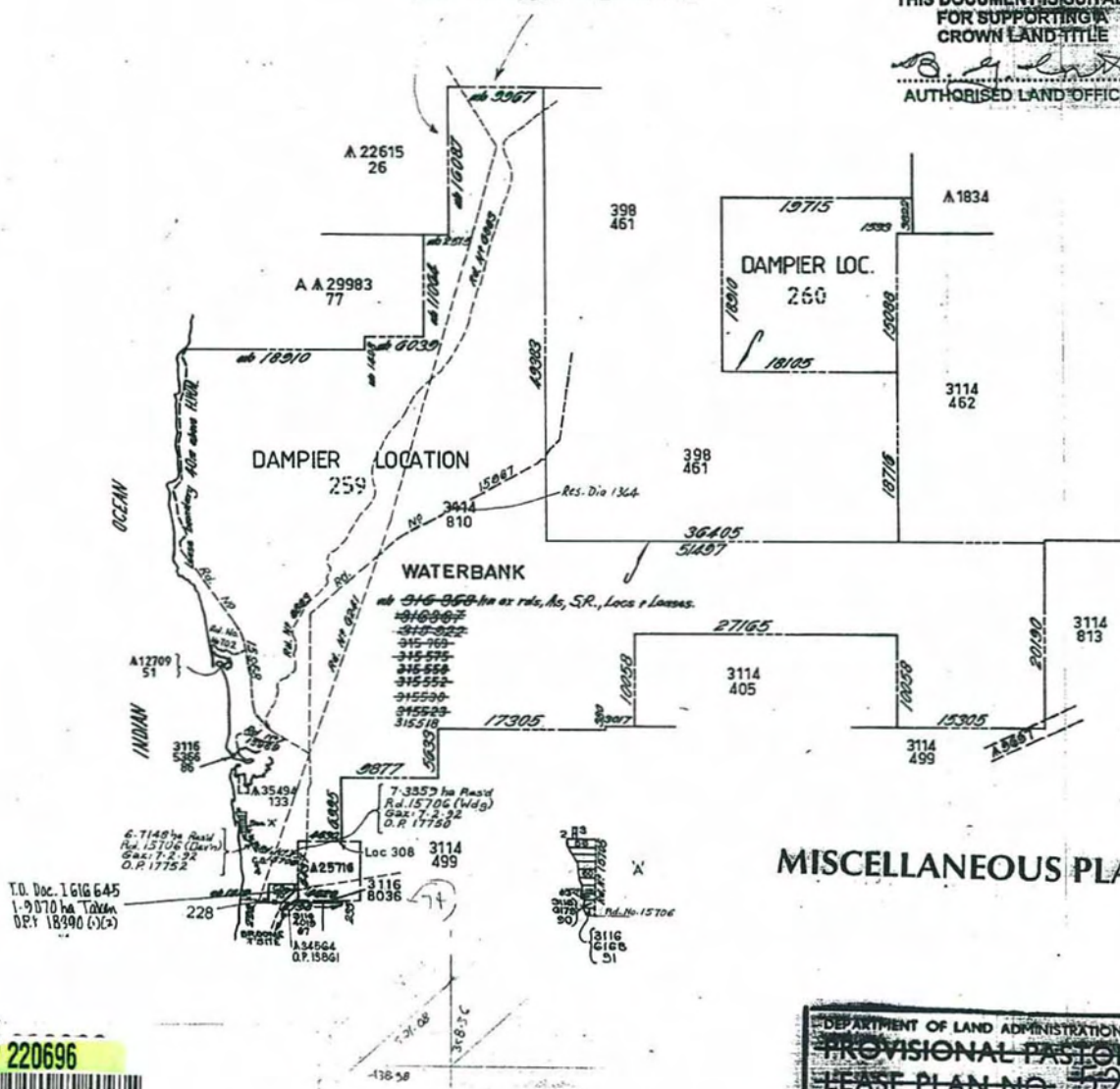
DP 220696

SCALE 1:500 000
 PLAN BROOME 1:250 000
 CORR 3877/64
 SHIRE OF BROOME
 1/4/2009

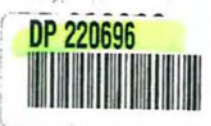
SEE O.P. 13666 RE SURVEY

THIS DOCUMENT IS SUITABLE
 FOR SUPPORTING A
 CROWN LAND TITLE

[Signature]
 AUTHORISED LAND OFFICER



MISCELLANEOUS PLAN No. 20696



DEPARTMENT OF LAND ADMINISTRATION
 PROVISIONAL PASTORAL
 LEASE PLAN NO. 524
 PASTORAL LEASE NO. 3114/810
 BLATION WATERBANK
 SUBJECT TO SURVEY

SOME LOTS 705-830.835 & 836

DAMPIER DISTRICT

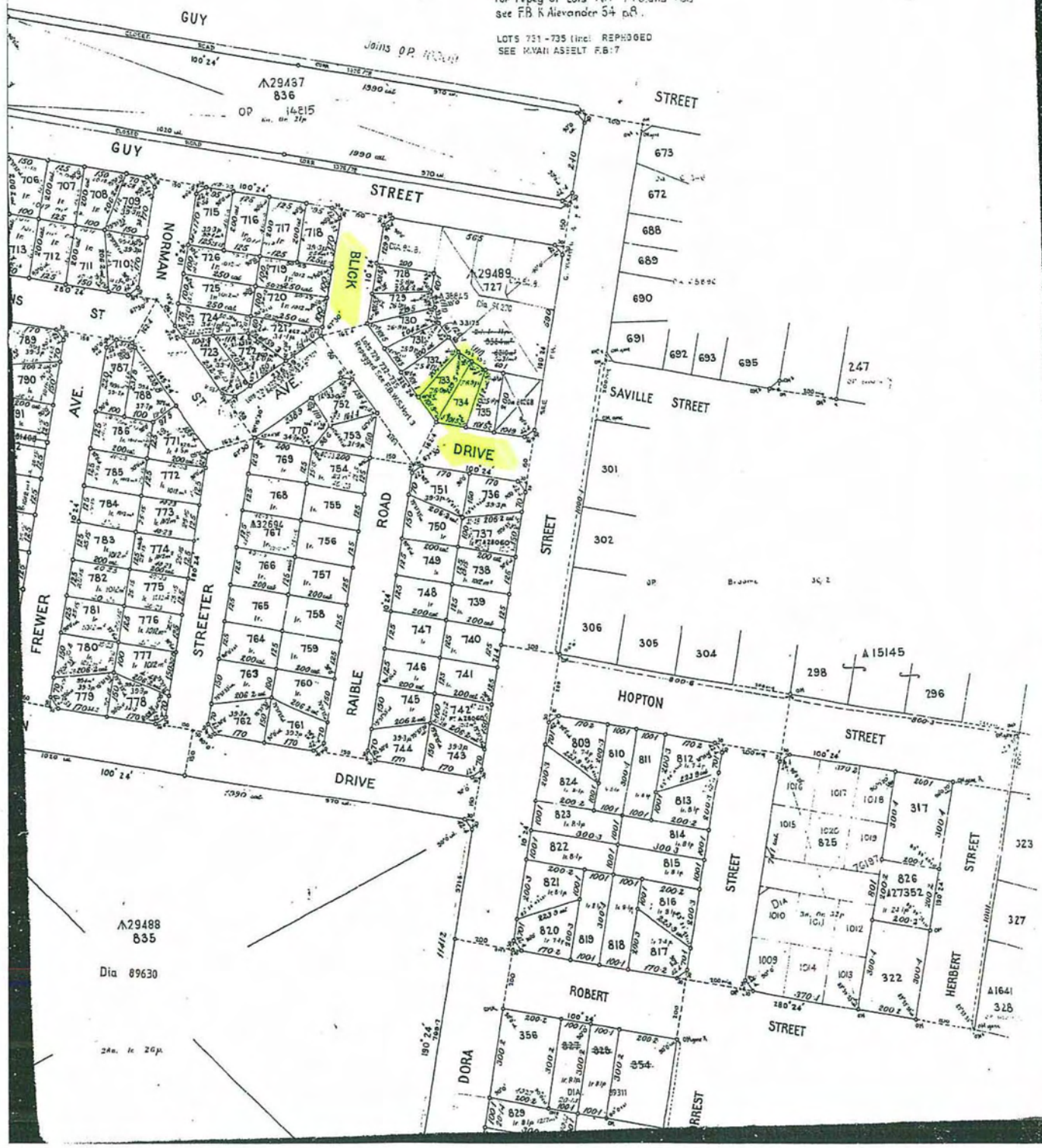
CORR: 2038/64

LOTS 715, 726, 776, 780, 785, 789, 802, 807, 808 & Surround of Lots 777-800 incl: Repegged TO FB 37731

LOTS 715-735 (incl: REPEGGED SEE M/VAN ASSELT F.B.7

For repeg of Lots 767 778 and 783 See FB K Alexander 54 n.R.

LOTS 751-735 (incl: REPEGGED SEE M/VAN ASSELT F.B.7



A29488
835

Dia 89630

2A. 1c 20p

BROOME LOTS 705-830, 835 & 836

DAMPIER DISTRICT

CORR: 2038/64

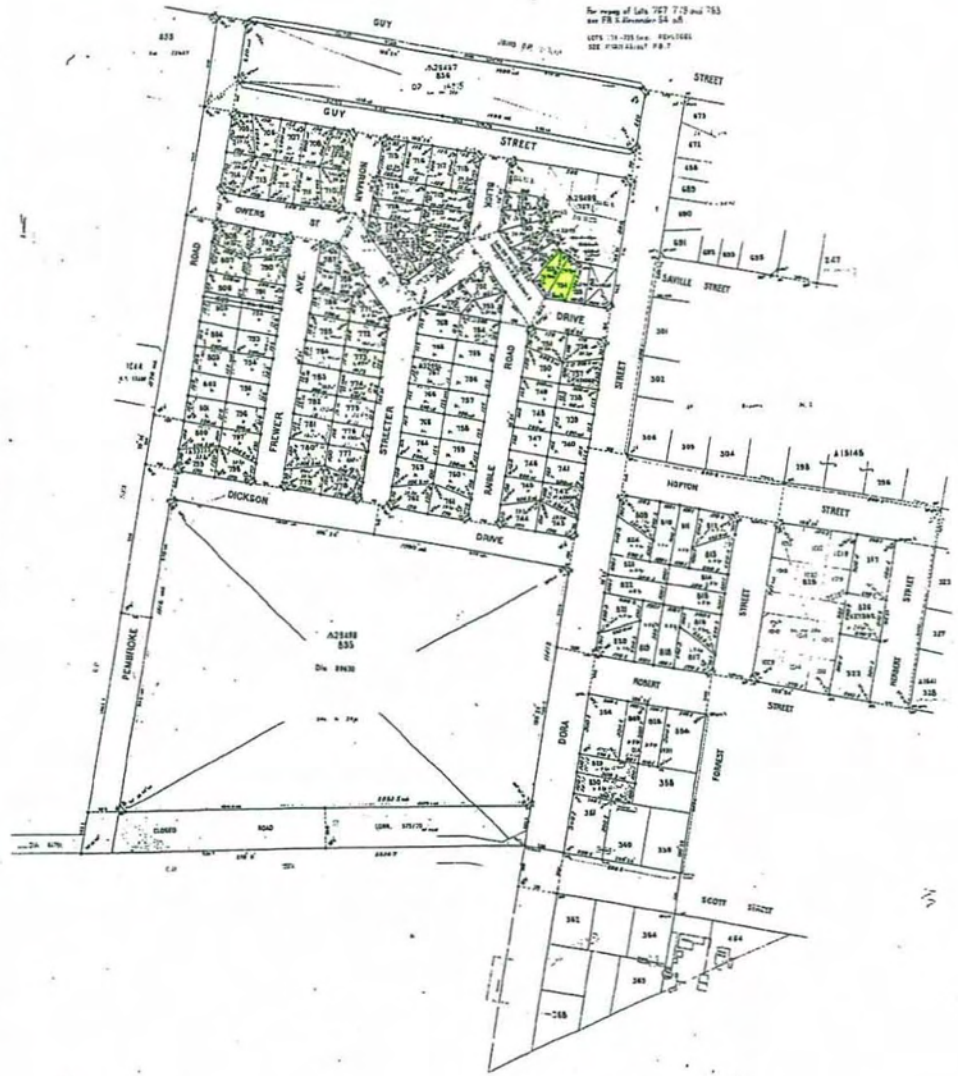
4 33273 Cor. 27-3-75
4 38615 Cor. 31-8-84, 25 2784

THE SHIPYARD
CORR: 2038/64

THE SHIPYARD
CORR: 2038/64

The map of Lots 707, 710 and 753
see FR 2 Amendment 24 on 5

LOTS 710-725 (see REVISED
SEE PLAN SHEET P.B. 7



MEMORANDUM
This document is
a copy of the original
plan as submitted to
the Registrar of Titles
and is not to be used
as evidence of title.
It is the responsibility
of the applicant to
ensure that the plan
is correct and that
all necessary approvals
have been obtained.
The Registrar of Titles
does not warrant the
accuracy of the plan.
Date: 11/11/15

Lot No.	Area (sq m)	Area (sq ft)
705	1234	13370
706	1234	13370
707	1234	13370
708	1234	13370
709	1234	13370
710	1234	13370
711	1234	13370
712	1234	13370
713	1234	13370
714	1234	13370
715	1234	13370
716	1234	13370
717	1234	13370
718	1234	13370
719	1234	13370
720	1234	13370
721	1234	13370
722	1234	13370
723	1234	13370
724	1234	13370
725	1234	13370
726	1234	13370
727	1234	13370
728	1234	13370
729	1234	13370
730	1234	13370
731	1234	13370
732	1234	13370
733	1234	13370
734	1234	13370
735	1234	13370
736	1234	13370
737	1234	13370
738	1234	13370
739	1234	13370
740	1234	13370
741	1234	13370
742	1234	13370
743	1234	13370
744	1234	13370
745	1234	13370
746	1234	13370
747	1234	13370
748	1234	13370
749	1234	13370
750	1234	13370
751	1234	13370
752	1234	13370
753	1234	13370
754	1234	13370
755	1234	13370
756	1234	13370
757	1234	13370
758	1234	13370
759	1234	13370
760	1234	13370
761	1234	13370
762	1234	13370
763	1234	13370
764	1234	13370
765	1234	13370
766	1234	13370
767	1234	13370
768	1234	13370
769	1234	13370
770	1234	13370
771	1234	13370
772	1234	13370
773	1234	13370
774	1234	13370
775	1234	13370
776	1234	13370
777	1234	13370
778	1234	13370
779	1234	13370
780	1234	13370
781	1234	13370
782	1234	13370
783	1234	13370
784	1234	13370
785	1234	13370
786	1234	13370
787	1234	13370
788	1234	13370
789	1234	13370
790	1234	13370
791	1234	13370
792	1234	13370
793	1234	13370
794	1234	13370
795	1234	13370
796	1234	13370
797	1234	13370
798	1234	13370
799	1234	13370
800	1234	13370
801	1234	13370
802	1234	13370
803	1234	13370
804	1234	13370
805	1234	13370
806	1234	13370
807	1234	13370
808	1234	13370
809	1234	13370
810	1234	13370
811	1234	13370
812	1234	13370
813	1234	13370
814	1234	13370
815	1234	13370
816	1234	13370
817	1234	13370
818	1234	13370
819	1234	13370
820	1234	13370
821	1234	13370
822	1234	13370
823	1234	13370
824	1234	13370
825	1234	13370
826	1234	13370
827	1234	13370
828	1234	13370
829	1234	13370
830	1234	13370
831	1234	13370
832	1234	13370
833	1234	13370
834	1234	13370
835	1234	13370
836	1234	13370

DP 27005