

Schedule 8—Morrell Park Road (clause 11)

As shown on Map 17

Schedule 8

Morrell Park Road (Map17)

Road 1, 20 metres wide

All that land being a 10 metre buffer based on the centreline as defined by the following coordinate positions:

LATITUDE (SOUTH)	LONGITUDE (EAST)
17.902898	122.252390
17.902952	122.252505
17.902952	122.252633
17.902988	122.252736
17.903033	122.252820
17.903094	122.252915
17.903189	122.253025
17.903270	122.253095
17.903387	122.253181
17.903465	122.253250
17.903534	122.253301
17.903583	122.253356
17.903611	122.253416
17.903625	122.253488
17.903629	122.253557
17.903642	122.255472
17.903638	122.257920
17.903644	122.261310
17.903650	122.264785

Road 2, 20 metres wide

All that land being a 10 metre buffer based on the centreline as defined by the following coordinate positions:

LATITUDE (SOUTH)	LONGITUDE (EAST)
17.903648	122.263434
17.905969	122.263432
17.909962	122.263437

Road 3, 20 metres wide

All that land being a 10 metre buffer based on the centreline as defined by the following coordinate positions:

LATITUDE (SOUTH)	LONGITUDE (EAST)
17.903650	122.264785
17.901204	122.264781
17.901214	122.263372

Note: All referenced Deposited Plans and Diagrams are held by the Western Australian Land Information Authority, trading as Landgate.
Spatial Cadastral Data sourced from Landgate, dated June 2009.
Gubinge Road Extension sourced from the Shire of Broome.
Morrell Park Road digitized from data supplied by Shire of Broome.
Native Title Determination WAD6006/1998 Rubibi Community (WC99/23) as Determined on the 28/04/2006.

Datum: Geocentric Datum of Australia (1994).

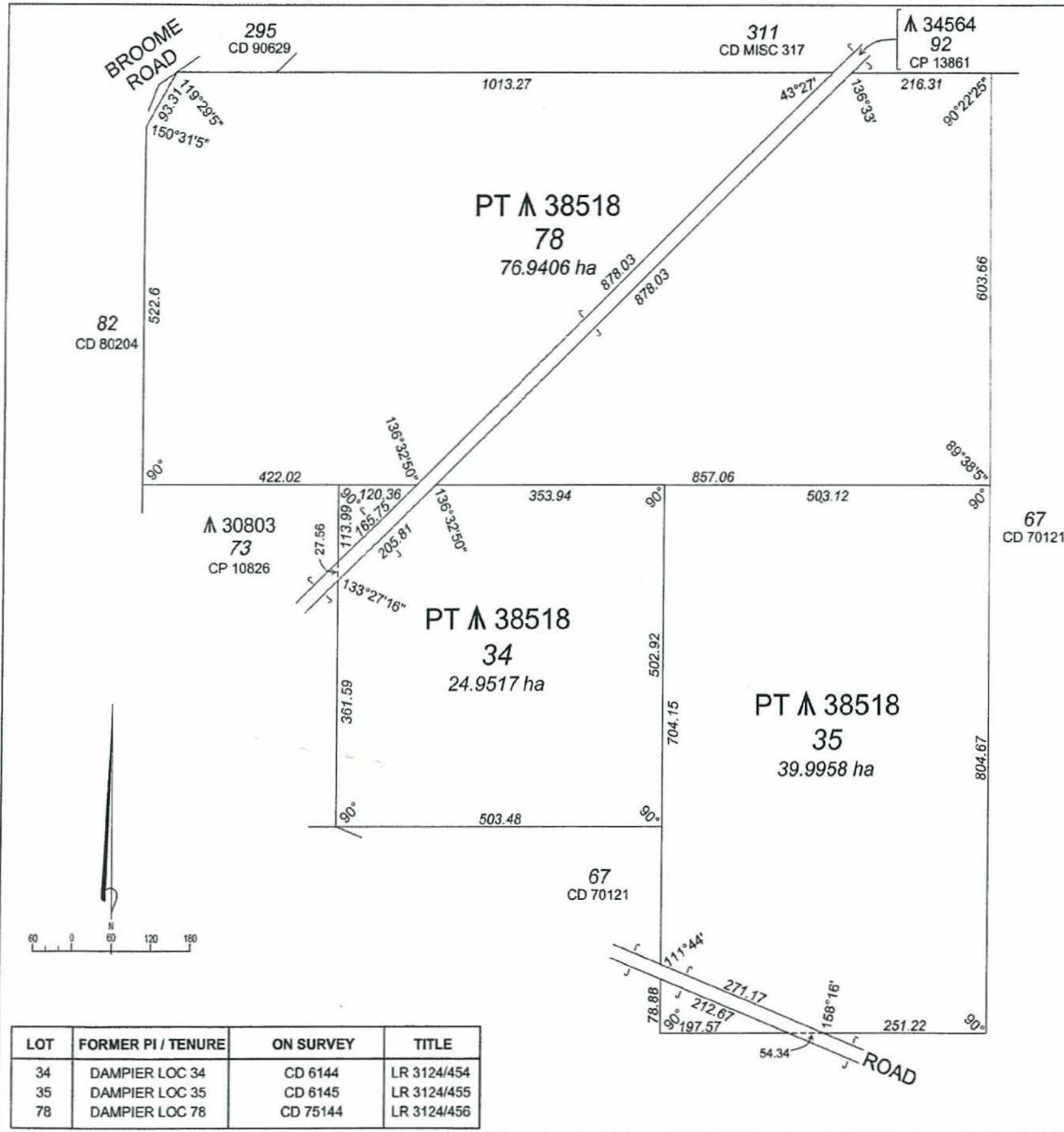
Prepared by: Native Title Spatial Services (Landgate), 19 February 2010.

Use of Co-ordinates:

Where co-ordinates are used within the description to represent cadastral or topographical boundaries or the intersection with such, they are intended as a guide only. As an outcome to the custodians of cadastral and topographic data continuously recalculating the geographic position of their data based on improved survey and data maintenance procedures, it is not possible to accurately define such a position other than by detailed ground survey.

NTSS 010 JHS

G:\WAG\Wag6006_98\Determination\NTD_Settlement\DGN\Proposed_Planning_Areas\Yawuru_ILUA\Yawuru_Area_agreement_ILUA_TD.doc



LOT	FORMER PI / TENURE	ON SURVEY	TITLE
34	DAMPIER LOC 34	CD 6144	LR 3124/454
35	DAMPIER LOC 35	CD 6145	LR 3124/455
78	DAMPIER LOC 78	CD 75144	LR 3124/456

TYPE	CROWN
PURPOSE	CONVERSION
CERTIFICATE OF TITLE	SEE TABLE
COMPILED FROM	CD's 6144, 6145, 75144 & 80204 CP's 10826 & 13861



DP 28371

DISTRICT	DAMPIER	DOLA FILE	01821-1970-02R0
TOWNSITE			
LOCAL AUTHORITY	SHIRE OF BROOME		
LOCALITY	ROEBUCK		

FORMER TENURE	RECORDED	
	ON INDEX	RUSSELL BRANDIS 11.9.2001 PREPARED BY DATE
SEE TABLE	CG73 (10) 6.4	
CSD REFERENCE	PUBLIC	
	CG73 (10) 6.4	LEANNE HERNE 12.9.2001 CHECKED BY DATE
GART-CSD/DP28371.CSD		

CREATED FOR

THE REDEFINITION OF DAMPIER LOCATIONS 34, 35 & 78 AS PREVIOUSLY CREATED ON CROWN DIAGRAMS 6144, 6145 & 75144

THIS PLAN PROVIDES A GRAPHIC REPRESENTATION OF EXISTING LOT(S) AND ALLOCATES WHOLE LOT(S) LAND DESCRIPTIONS FOR THE CONVERSION TO A DIGITAL REGISTER

SCALE 1:6000 ALL DISTANCES ARE IN METRES	DEPOSITED PLAN 28371
DOLA Department of LAND ADMINISTRATION	SHEET 1 OF 1 EDITION VERSION

YAWURU AREA AGREEMENT INDIGENOUS LAND USE AGREEMENT - BROOME

MAP 17 SCHEDULE 8 MORRELL PARK ROAD

LAND TENURE AS AT
JUNE 2009

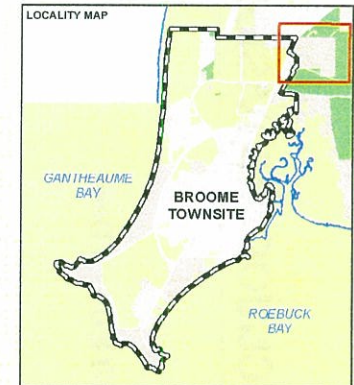
- LEGEND**
- State Forest
 - Marine Park
 - Miscellaneous Tenures
 - Unallocated Crown Land
 - Freehold
 - Pastoral Leases
 - General and Special Purpose Leases
 - Perpetual and Conditional Purchase Leases
 - Reserves
 - Road
 - Broome Townsite
 - Schedule 7 Part 3 Morrell Park
 - WAD6006/1998 Rubibi Community (WC99/23) Determination
 - Road 1 - 20 Metres Wide
 - Road 2 - 20 Metres Wide
 - Road 3 - 20 Metres Wide

0 100 200 300
Metres

Lot Size and Lengths based on
Geometric Datum of Australia 1994

DATA SOURCES

Cadastral and Tenure information sourced from Landgate Spatial Cadastre Database (SCDB)
Administrative boundaries are sourced from the Landgate Administrative Boundaries Dataset
Topographical data sourced from the PSMA Dataset
Road names sourced from Landgate Road Centreline Dataset
Road names sourced from Landgate Road Centreline Dataset
Mining Tenement data sourced from DMP. Data enquiries contact mtd.dmp@dpw.wa.gov.au
Petroleum data sourced from DMP. Data enquiries contact petroleum.mapping@dmp.wa.gov.au
Coastlines and shorelines are interpreted from aerial photography or records from ground surveys
Aerial photographic images sourced from Landgate either titled digital mosaic
-250K raster data or Commonwealth of Australia (Geoscience Australia) 2006
Local Authorities terminate at Low Water Mark (LWM) unless otherwise specified
Pastoral Leases terminate 40 metres above High Water Mark (HWM) unless otherwise specified
Islands shown are Unallocated Crown Land (UCL) unless otherwise specified



DISCLAIMER
For informational purposes only. This map is a pictorial representation of data extracted from Landgate Datasets and is intended to be an overview of general geographic information.
Watersheds shown on this map do not necessarily depict an exact cadastral boundary.
Native title application boundaries interpreted from descriptions, held by the National Native Title Tribunal (NNTT) and Federal Court.
Reference should be made to the NNTT for confirmation of this boundary for any legal purposes.
In the event of any discrepancy between the written application boundary description and the areas depicted on this map the written description shall take precedence as the maps and/or encumbrances are indicative only.

**NATIVE TITLE SPATIAL SERVICES
PRODUCED 19/02/2010**

Street address: 1 Midland Square, Midland, WA 6056
Postal address: P.O. Box 2222, Midland, WA 6936
Tel: (08) 9273 7391 Fax: (08) 9273 7615
email: info@landgate.wa.gov.au
Internet: www.landgate.wa.gov.au

