



Government of **Western Australia**
Department of **Treasury**

Regulatory Reform in the North West Interconnected System

Stakeholder Reference Group

11 December 2017





Agenda

1. Introduction
2. Summary of Stakeholder Submissions
3. High Level Framework
4. Design Process – Next Steps



Stakeholder Submissions to Issues Paper

STAKEHOLDER SUBMISSIONS

NWIS Network Definitions

NWIS Coastal - Horizon, Alinta, BHP lines in Karratha & Port Hedland areas

NWIS Interconnected Network - NWIS Coastal + Rio Tinto network



STAKEHOLDER SUBMISSIONS

14 Submissions received from:

Alinta Energy
ATCO
BHP
Chamber of Commerce and Industry WA
City of Karratha
FMG
Horizon Power
Pilbara Development Commission
Rio Tinto *
Roy Hill
Shire of East Pilbara
Town of Port Headland
TransAlta
Woodside

* Confidential submission

Public submissions have been published on the Department of Treasury website today

STAKEHOLDER SUBMISSIONS

- Submissions generally support the need for some degree of reform in the NWIS
- Submissions generally agree that the reforms have the potential to:
 - improve asset utilisation;
 - lower prices; and
 - improve system security and reliability
- Asset owners are mostly wary of relinquishing control of, or allowing open access to, their own assets
- Regional councils consider that the reforms require greater focus on the inland NWIS to support more efficient prices and access for:
 - Junior Miners;
 - large scale renewables; and
 - industry development

STAKEHOLDER SUBMISSIONS

Access Framework – areas of general agreement

- ✓ A clear and robust dispute resolution framework
- ✓ An appropriate information disclosure regime
- ✓ Supportive of National Competition Council guidelines
- ✓ Periodic reviews
- ✓ Constrained access for new connections
- ✓ Preserve existing property/contract rights
- ✓ Mechanism to deliver efficient investment – no gold plating
- ✓ Efficient capex recovered through network prices
- ✓ Ring fencing of Horizon Network & Retail (Horizon proposed ISO+ as an alternative)

STAKEHOLDER SUBMISSIONS

Access Framework – Initial Coverage

- Stakeholders presented a range of views on initial coverage (not all stakeholders presented a view)

Horizon's network only	Horizon + Alinta networks	Coastal networks	NWIS Interconnected Network
Alinta FMG Rio Tinto	BHP Horizon*		Horizon** Woodside TransAlta Pilbara Development Commission Town of Port Headland Shire of East Pilbara City of Karratha

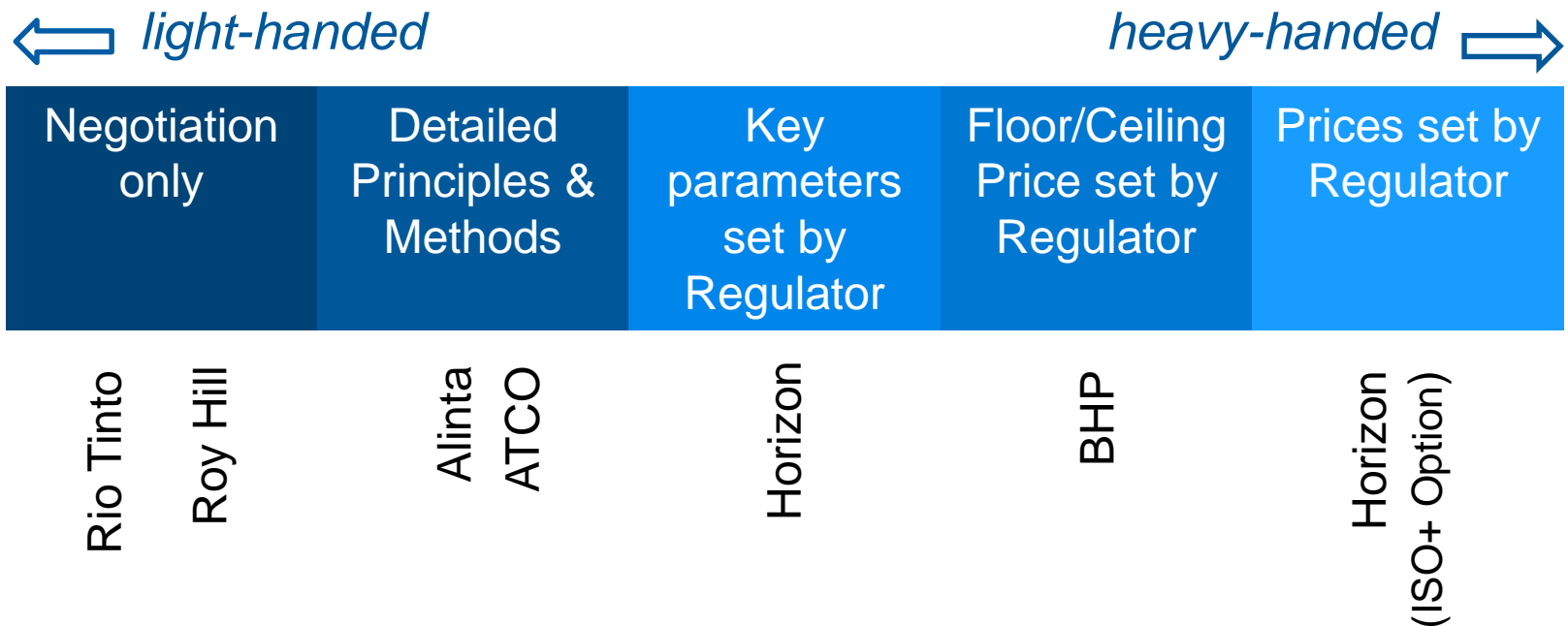
*starting point
**longer term vision

- Businesses that prefer limited coverage initially, generally support mechanisms to potentially extend coverage in the future

STAKEHOLDER SUBMISSIONS

Access Framework – Pricing

- Submissions presented a range of views on pricing
- The options below would be supported by information, negotiation & dispute guidelines



* Detailed principles & methods would apply for all but ‘Negotiation Only’

STAKEHOLDER SUBMISSIONS

Technical Rules – areas of general agreement

- ✓ Development, application, and compliance with consistent technical rules for new generators/users
- ✓ Developed in consultation with asset owners
- ✓ Rule change process and compliance managed by ISO
- ✓ Technical rules for existing assets grandfathered
 - ✓ CBA for any changes to technical rules

STAKEHOLDER SUBMISSIONS

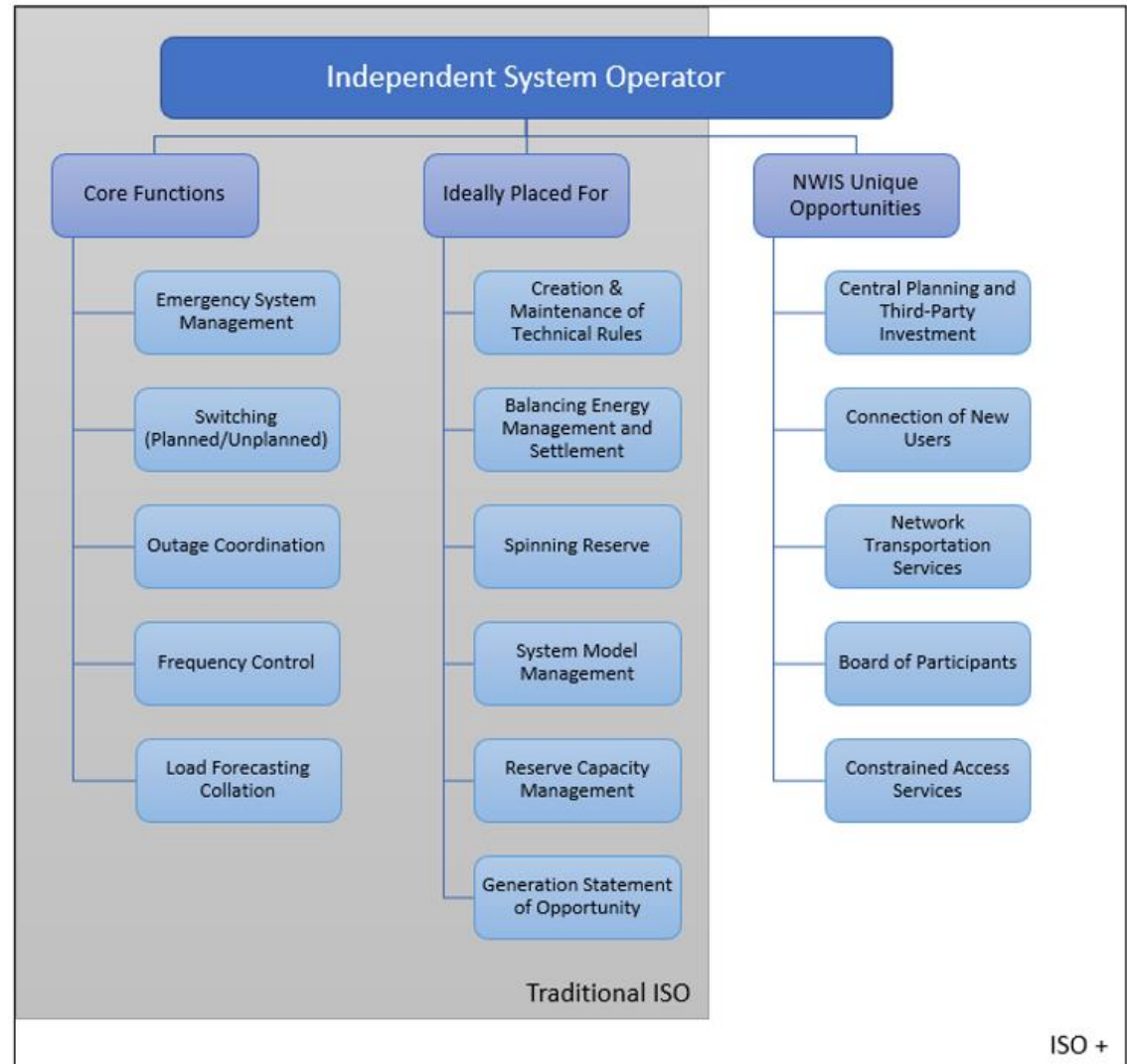
System Operator – areas of general agreement

- ✓ Establishing an Independent System Operator
 - Ancillary Services
 - Outage, reliability and system security management
 - Technical Rules
 - Consolidated network model (& assess impact of connection applications on existing users)
 - Investigations of system incidents
 - Cost recovered from users (some users currently pay for system operations through their contracts)
- ✓ Independent & experienced → AEMO

STAKEHOLDER SUBMISSIONS

System Operator – divergent views

- Horizon proposes additional functions (ISO+)



STAKEHOLDER SUBMISSIONS

System Operator – divergent views

- Submissions generally support ISO covering the entire NWIS
 - Rio Tinto does not support an ISO with expanded functions and powers covering the NWIS Interconnected Network. An ISO covering the NWIS Interconnected Network should have no greater functions and powers than Horizon currently.
- Some submissions do not support costs in addition to what is covered in contracts with Horizon
- Most support ISO immunity consistent with other Jurisdictions
 - FMG does not support removal of liability for network failure.



High Level Design Framework

NETWORK ACCESS FRAMEWORK

Coverage

Access Coverage – Initial, Extension

Framework

**Negotiation
Framework**

**Pricing
Methodology**

**Information
Disclosure**

**Dispute
Resolution**

**Connection
& Access
Policies**

Structural

Ring Fencing – Accounting, Function

Other – FRC, Prudentials, Metering

Transition

Transition – protecting existing contractual/property rights

INDEPENDENT SYSTEM OPERATOR

Coverage

Network coverage – Initial, Extension

Framework

**Operational
planning**

**Emergency
response**

**Frequency
control**

Switching

**System
model
management**

Other*

Structural

Ring Fenced or standalone – Accounting,
Function

Other – Governance, funding

Transition

Transition – network visibility and powers

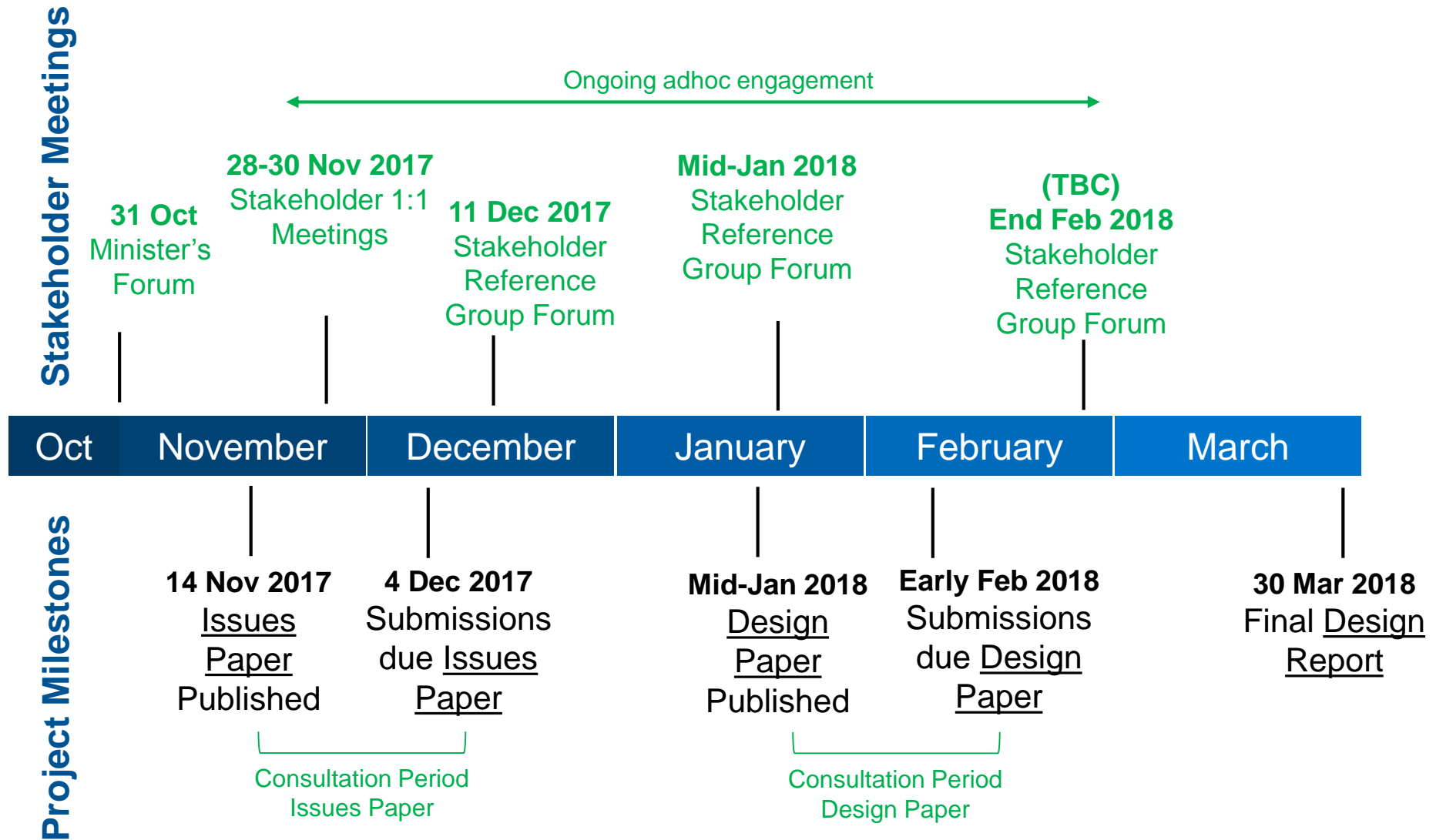
* e.g. Management of: Technical Rules, access, all ancillary services, demand & energy forecasting, central network planning, pricing, reconciliation and settlements



Design Process – Next Steps

Opportunities for stakeholder input

DESIGN PROCESS





Thankyou