



Department of Finance

Department of Local Government,  
Sport and Cultural Industries



Western Australian State Government

# Percent for Art Scheme 2017-18 Year in Review





**Department of Finance, Building Management and Works,**

Optima Centre, 16 Parkland Road Osborne Park WA 6017

**Telephone:** +61 8 6551 2213

**Email:** [percentforart@finance.wa.gov.au](mailto:percentforart@finance.wa.gov.au)

**Website:** [www.finance.wa.gov.au/works](http://www.finance.wa.gov.au/works)

**Department of Local Government, Sport and Cultural Industries**

140 William Street Perth WA 6000

**Telephone:** +61 8 6552 7300

**Toll Free (country WA callers only):** 1800 199 090

**Email:** [info@dca.wa.gov.au](mailto:info@dca.wa.gov.au)

**Website:** [www.dca.wa.gov.au](http://www.dca.wa.gov.au)

For information on the Percent for Art Scheme:

email: [percentforart@finance.wa.gov.au](mailto:percentforart@finance.wa.gov.au) | web: [www.finance.wa.gov.au/](http://www.finance.wa.gov.au/)

# Western Australian State Government Percent for Art Scheme

---

## Annual Report 2017-2018

The State Government Percent for Art Scheme (“the Scheme”) was established in 1989 with two key objectives:

- to improve the quality of the built environment and the value of public facilities; and
- to create new professional opportunities for artists.

The Scheme delivers these benefits through a percentage allocation (up to one percent) of the estimated total cost of a State funded capital or major infrastructure project for public art. Since its inception, over \$54 million has been commissioned across 628 projects.

The Scheme has played a significant role in the artistic fabric of our State, enriching the lives of Western Australians and contributing to a broader understanding of the important role public art can play in our lives. Public art improves public spaces and can create a sense of cultural and community identity.



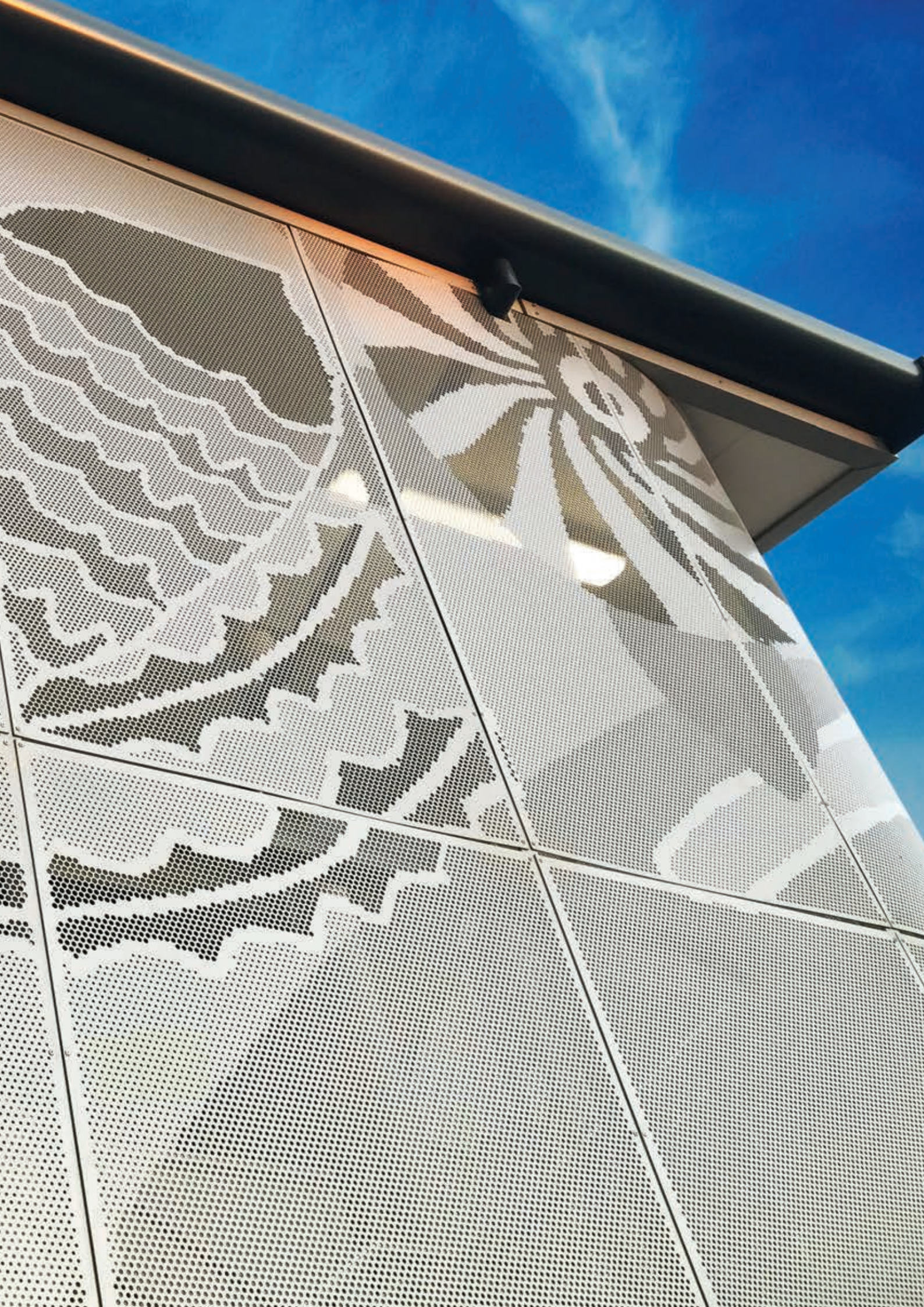




# Contents

Scheme Snapshot 2017-2018	5
Management of the Scheme	6
Art Coordinators Panel	9
Artworks 2017-2018	11
New commissions	13
Completed commissions	14
In Focus	
Yanchep Secondary College	16
Fremantle College	19
Katanning Health Service	20







# Scheme Snapshot

Over the past financial year, government agencies continued to recognise the value of the Scheme by strongly supporting the allocation of the full one percent of construction budgets to art commissions.

During 2017-2018, the Department of Finance commissioned 10 new art works valued at \$1.67 million. A total of \$2.48 million was spent on projects in progress and fifteen artworks were completed.

## Percent for Art Scheme Statistics 2017-18

Projects completed (total)	15
Projects completed in regional and remote WA	4
Projects completed in metropolitan Perth	11
New projects (total)	10
Money allocated to new projects	\$1.67 million
Expenditure on works in progress	\$2.48 million

# Management of the Scheme

The Scheme is managed in a partnership between the Department of Finance's Building Management and Works (BMW) and the Department of Local Government, Sport and Cultural Industries (DLGSCI).

Over the 2017/2018 year, the Art Coordinators Consultant Panel Contract was renewed. Tenders were invited in late 2017 and 11 Art Coordinators were appointed, including three new consultants, two of whom are located in regional areas. The Panel contract will operate for one year with options for four 12-month extensions.

The Scheme would like to recognise the invaluable contributions of Charles Maclean, former Percent for Art Manager, who retired earlier this year. Charles has been a passionate supporter of the arts for many years, working closely with Art Coordinators and Project Managers to support the Scheme's implementation. Under his thoughtful leadership, the Scheme reached many milestones, celebrating 25 years of successful operation in 2014.











# Art Coordinators Panel

The Art Coordinators Panel consists of 11 consultant art coordinators who manage the projects commissioned under the Percent for Art Scheme.

The Art Coordinators Panel meets quarterly to report on current commissions and discuss issues relating to artists, commissioning agents and the project management of public art projects. They are the primary link between Finance, the commissioning agency, the community, the artists, the builder and the architect.

During the year, the panel contract was renewed and welcomed new members Colette McEntee, Helen Curtis and Vanessa Margetts to the panel.

The current Art Coordinator Panel consists of:

- Adrian Jones
- Alison Barrett
- Colette McEntee
- Corine van Hall
- Helen Curtis
- Jenny Beahan
- Jenny Kerr
- Maggie Baxter
- Mariyon Slany
- Paola Anselmi
- Vanessa Margetts

The Scheme recognises the contributions of outgoing panel member Malcolm McGregor, who has been involved in the Scheme since its inception.







# Artworks 2017-2018

Information on new commissions, total annual expenditure and project completions are the three measurements used to monitor and record the success of the Scheme and its contribution to both the arts sector and the building industry.

Typically, State infrastructure building projects take two to three years to complete and, as such, art projects and commissions can fall over more than one financial year.

In 2017-2018, Finance made payments on 61 Percent for Art Scheme commissions-in-progress, totalling \$2.48 million.







## Completed Commissions

Nearly two-thirds of the projects completed this financial year were for the Department of Education, a long-standing participant in the Scheme. These projects invariably demonstrate the successful collaboration between artists and school communities, creating artworks that support a sense of place and community.

Almost a third of the projects completed in 2017-2018 were in regional and remote locations, including the Katanning Health Centre. The centre features a suite of artworks that celebrate the town's history and diversity, created in consultation and collaboration with the local Aboriginal community.

Region	Project	Artist	Art Coordinator	Art Budget
Metropolitan	Churchlands Senior High School	Stuart Green	Adrian Jones	\$200,000
Metropolitan	Fremantle College	Penelope Forlano, Glen Oldfield + Loren Adams	Maggie Baxter	\$200,000
Mid West	Geraldton Senior College	Gera Woltjer	Alison Barrett	\$31,500
Metropolitan	HBF Arena	Margaret Dillon	Alison Barrett	\$30,000
Metropolitan	Highgate Primary School	Paul Caporn	Maggie Baxter	\$37,020
Metropolitan	Honeywood Primary School	Mehdi Rasulle	Mariyon Slany	\$143,180
South West	Katanning Health Service	Tim MacFarlane Reid + Tony Pankiw	Mariyon Slany	\$150,000
Mid West	Pingelly Health Centre	Tony Pankiw	Mariyon Slany	\$50,000
South West	Rapids Landing Primary School	Ian Dowling	Adrian Jones	\$125,000
Metropolitan	South Metropolitan TAFE Munster	Jennie Nayton	Mariyon Slany	\$75,000
Metropolitan	South Metropolitan TAFE Murdoch	Mark Datodi + Steve Tepper	Alison Barrett	\$330,000
Metropolitan	Vincent Fire Station	Mark Datodi	Alison Barrett	\$51,500
Metropolitan	Wembley Primary School	Si Hummerston	Jenny Kerr	\$24,500
Metropolitan	West Leederville Primary School	Paula Hart	Jenny Kerr	\$29,000
Metropolitan	Yanchep Secondary College	Rick Vermey	Alison Barrett	\$350,000



## New Commissions

During 2017-2018, there were 10 new public artworks commissioned through the Scheme, valued at \$1.67 million. Of these commissions, four were for new artworks in regional Western Australia.

The average budget for the public art component of these projects was \$167,800 with budgets ranging from \$38,000 to \$400,000.

Region	Project	Commissioning Agency	Art Budget
Metropolitan	Armadale Justice Complex	WA Police/Department of Justice	\$400,000
Metropolitan	Balcatta Senior High School	Department of Education	\$200,000
South West	Bunbury Senior High School	Department of Education	\$38,000
Metropolitan	Byford South East Primary School	Department of Education	\$135,000
Metropolitan	Caversham South Primary School	Department of Education	\$120,000
South-West	Collie Senior High School	Department of Education	\$60,000
Metropolitan	Inner City College	Department of Education	\$290,000
South-West	Margaret River Senior High School	Department of Health	\$215,000
Metropolitan	MH370 Memorial	Department of Premier & Cabinet	\$150,000
South West	North Albany Senior High School	Department of Health	\$70,000
(10 Projects)			\$1,678,000







# In Focus

## Yanchep Secondary College

The unique marine coastal landscape near the new Yanchep Secondary College provided Perth artist, Rick Vermey, with the inspiration for a suite of artworks for the school. The works were developed around the theme of motion, with repetitive patterns that provide a perception of movement.

The art components are integrated into the built form onto louvres, brick walls and glazing. At the eastern entrance of the College, Rick created patterned brick walls with over 4,000 custom profiled saddleback bricks laid in a dune ripple pattern. Using parametric scripting, Rick designed a complex artwork pattern with a detailed plan for the bricklayers to lay the bricks. Custom brick shapes were produced by a local manufacturer to match the design specifications.

Extending his investigation into abstract patterning, Rick produced a suite of custom horizontal sun-shade louvres on the northern facade of the Administration, Cafeteria, and Learning Community buildings, and the eastern face of the Technologies building. The slatted powder coated aluminium blades with undulating ripples are evocative of wind moving over water, creating an oscillating vertical rhythm that commands an exhilarating presence on the campus.

The final artwork, located on the glazing of the northern and southern walkways, is a pair of wind screens with striking, yet simple graphic patterns of undulating ripples. These elegant designs in vibrant blue ceramic fritted ink were inspired by the artists' visual exploration of tidal and coastal movements on the ocean surface and wind generated patterns on shifting sands.

### Acknowledgements

Artist: Rick Vermey

Architect: With\_Architecture Studio

Art Coordinator: Alison Barrett

Photography: Rob Frith

Client: Department of Education

Project Manager: Indira Jayawardena









HONESTY AND INTEGRITY  
MOOKDITJ KOOKT  
CHARACTER  
DURIP-DURIP  
INQUISITIVE  
KARTIN  
FUN AND FRIENDSHIP  
DURFIN-MAAF  
CREATIVITY  
MOODID KAT  
SUSTAINABLE  
WALYALLUP DULGAESHEE  
RESPECTFUL  
YIRA YARKIN  
GROWTH/GROWING  
YIRA-KOORLIN  
COMMUNITY  
BOODJA



# In Focus

## Fremantle College

In the design and construction of Kaleidoscopic Wave, artist and former student of South Fremantle Senior High School, Penelope Forlano, aimed to connect Fremantle's maritime and architectural heritage with the present and future of technology.

Taking her cue from the College's specialist maritime program, the artwork is a series of complex three-dimensional swelling waves that emerge from a two-dimensional tiling layout on the soffit of the new covered open space. The highly polished mirrored surface of the soffit suggests the experience of looking up from under the ocean, experiencing ever changing water ripples and fragmented reflections of light and image. The skylight within one of the forms pulls light down into the space while providing a periscope like opening to the world beyond.

By integrating the artwork into the soffit, Penelope celebrates the architectural and industrial heritage of Fremantle in which many 19th century buildings feature decorative pressed tin ceilings and soffits to the verandas. Employing generative computer modelling programs to design the form and the latest digital CNC (Computer Numerical Control) fabrication techniques to laser cut and fold the stainless steel sheet with precision, she brings this decorative tradition from the past into the 21st century.

### Acknowledgements

Artist: Penelope Forlan, Glen Oldfield + Loren Adams

Architect: JCY Architects

Art Coordinator: Maggie Baxter

Photography: Bo Wong

Client: Department of Education



# In Focus

## Katanning Health Service

The upgraded Katanning Health Service has been the beneficiary of two separate, yet complementary artworks.

Artist Tony Pankiw's 'Harmonious Harmonies,' is embedded as part of the glasswork and screening for the fabric of the building. These beautifully bright images, derived from 43 multicultural groups, dominate the reception of the hospital. The community-derived imagery, inspiration for which was gained during the annual Harmony Festival, incorporates a range of Katanning's diverse cultures. Textile patterns representing different groups such as Afghanis, Malaysian, Italian, Indian, Burmese and Europeans are the inspiration for the artwork patterning. The artwork which forms the glazed entry statement is a collage of historical images from Katanning's past celebrating the town's history and its diverse, multicultural immigrants and Aboriginal community. Local Aboriginal artists were consulted and collaborated in creating the designs for the glazed panels for the reception area and meeting room.

Tony Pankiw's work includes seven metres of sculptural screening at the hospital entry, repeating the tree theme of the glazed panels. Drawing predominately on historical themes, the imagery includes sandalwood cuttings, the sheep saleyard, the railway line and the flour mill.

Tim MacFarlane Reid's entry statement artwork called 'A Gathering' strongly draws the eye, providing a powerful place maker for the precinct. The evocative artwork is inspired by the quality of 'harmony' embodying the care, nurturing and calm required to run a successful health care facility. The three-metre high sculpture is a fluid organic form of Corten steel and aluminium encircling an abstracted figure which is illuminated at night. The figure, as seen from various angles, is as either one or two separate figures interacting.

### Acknowledgements

Artist: Tim MacFarlane Reid + Tony Pankiw

Architect: Peter Hunt Architects

Art Coordinator: Mariyon Slany

Photography: Tony Pankiw

Client: WA Country Health Service

Project Manager: Mally Rall + Sarah Zimmerman





Waiting Room →

2 ← Waiting Room



