



Government of **Western Australia**
Department of **Communities**

Department of Communities

Update on Reforms for the Supporting Communities Forum



People | Place | Home

Michelle Andrews, Director General, Department of Communities



Reform Update

- 1. External Review**
- 2. Out-of-Home Care reform**





External Review of Communities

- **Commissioned to complement the internal Agency Capability Review (ACR) completed in May 2019**
- **Conducted by public sector reform expert Iain Rennie**
- **Builds on ACR and is informed by the staff cultural assessment survey and engagement workshops undertaken in 2018-19**
- **Focused on engagement with external stakeholders to capture their perspective on our current performance and future opportunities**



Themes and focus areas

Themes from the ACR and staff culture work align closely with external feedback.

Three areas of focus for the immediate future:

- 1. improving outward focus;**
- 2. strengthening people; and**
- 3. enhancing systems and processes (or “ways of working”).**

There is an Aboriginal stream that cuts across all three areas.



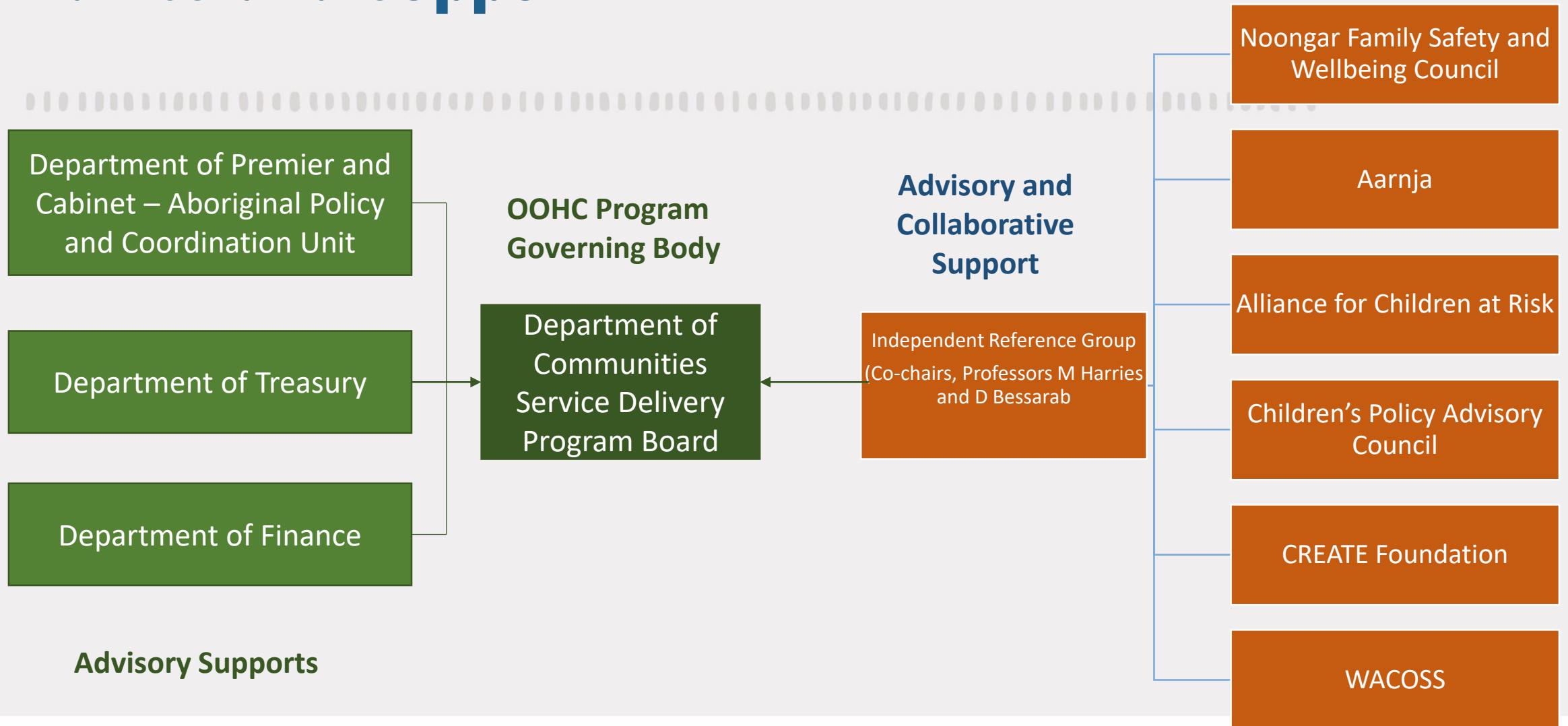
Priority actions

- **Appoint a chief people officer**
- **Strengthen mechanisms for external stakeholder engagement**
- **Establish an Aboriginal elders council to support co-design and shared decision-making**
- **Appoint a chief data officer**
- **Establish an expert panel to advise on our stewardship of the child protection system and ongoing improvement in professional practice**

Out-of-Home Care Reform



Advice and support



Engagement and Collaboration



Aboriginal Cultural Engagement Sub-group – focus on inclusion of regional and remote Aboriginal regional communities and organisations



Service Solutions Sub-group – focus on addressing existing system pressures



Finance Sub-group – focus on financial models and costings



Building a Better Future

Increasing role and responsibility of Aboriginal Community Controlled Organisations

Implementing place-based, services focussed on the needs of the child and their family

Creating an equitable, sustainable, responsive service system

