

Schedule 8 – Site Matters

Part A – Site Plans and Site Access Dates

1 SITE PLANS

PUBLIC OPEN SPACE
SHARED SENIOR OVAL

R25-60 RESIDENTIAL

R25-60 RESIDENTIAL

ENVIRONMENTALLY SENSITIVE AREA

FAIRY PARADE

LOT 444
ON DP 401588

LEATHERBACK BOULEVARD

NEIGHBOURHOOD CENTRE
R40-80 MIXED-USE

CADASTRAL BOUNDARY
SUBJECT TO
SUBDIVISION/AMALGAMATION
AND UTILITY INFRASTRUCTURE
REQUIREMENTS

SITE

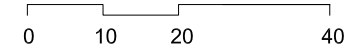
PAINTED PARKWAY

R25-60 RESIDENTIAL

R25-60 RESIDENTIAL

HASSELL

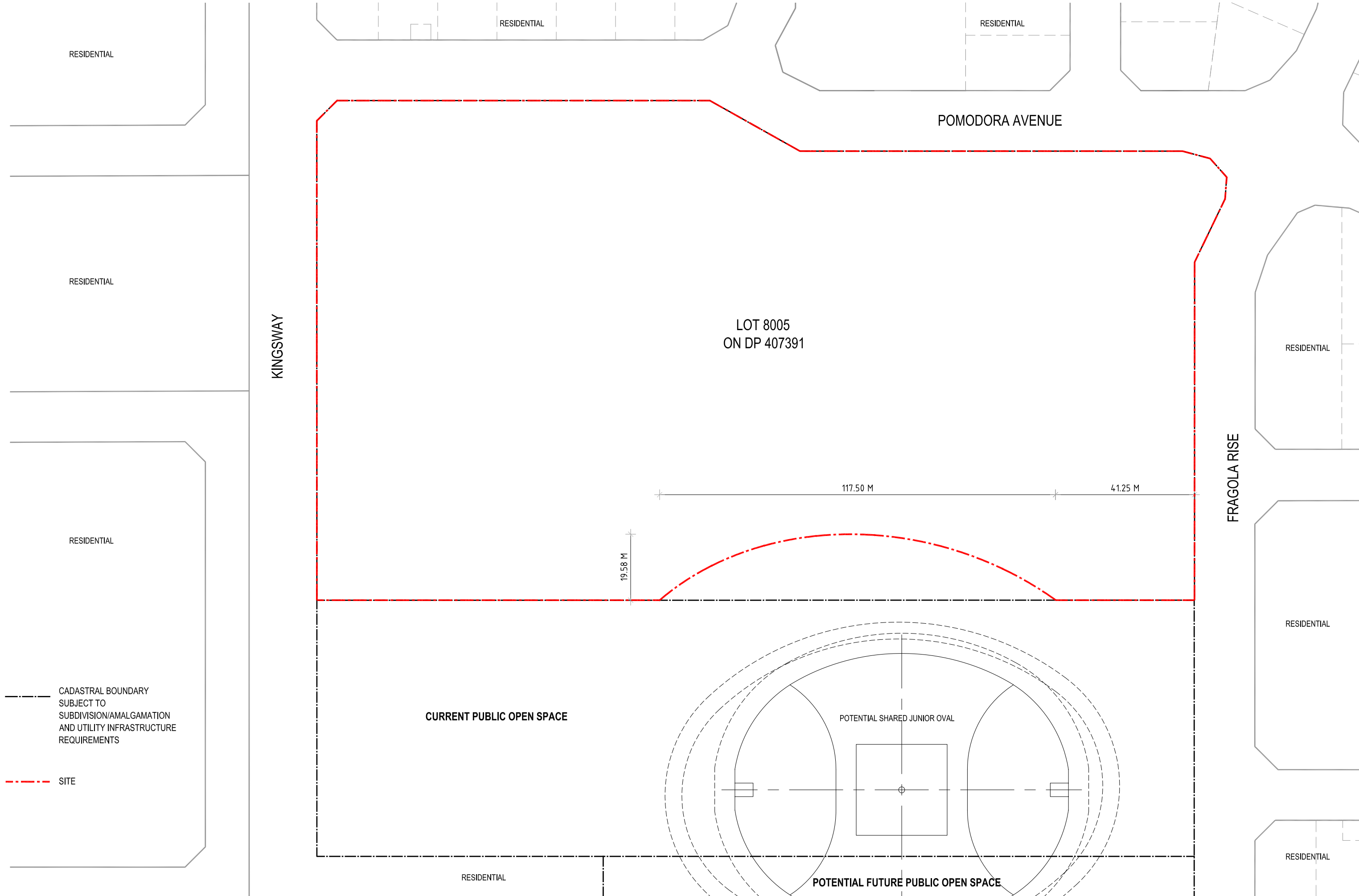
BOUNDARIES AND SITE INFORMATION
ARE SUBJECT TO SURVEY



1:500 @ A1
1:1000 @ A3

Project Name
WA Schools PPP

Drawing
ALKIMOS PRIMARY SCHOOL
Project Co Site Boundary
for Deed Inclusion



RESIDENTIAL

RESIDENTIAL

RESIDENTIAL

POMODORA AVENUE

RESIDENTIAL

KINGSWAY

LOT 8005
ON DP 407391

RESIDENTIAL

117.50 M

41.25 M

19.58 M

FRAGOLA RISE

RESIDENTIAL

RESIDENTIAL

CURRENT PUBLIC OPEN SPACE

POTENTIAL SHARED JUNIOR OVAL

--- CADASTRAL BOUNDARY
SUBJECT TO
SUBDIVISION/AMALGAMATION
AND UTILITY INFRASTRUCTURE
REQUIREMENTS

- - - SITE

RESIDENTIAL

POTENTIAL FUTURE PUBLIC OPEN SPACE

RESIDENTIAL

HASSELL

BOUNDARIES AND SITE INFORMATION
ARE SUBJECT TO SURVEY



0 10 20 40

1:500 @ A1
1:1000 @ A3

Project Name
WA Schools PPP

Drawing
LANDSDALE EAST
PRIMARY SCHOOL
Project Co Site Boundary
for Deed Inclusion

R20-30 RESIDENTIAL

NADINE PROMENADE

R20-30 RESIDENTIAL

SWALE

0.5 HA
DOE LAND
CONTRIBUTION
TO POS

167.05 M

LOT 181
ON DP 403234

RESIDENTIAL

MCDONALD ROAD

LINAKEE STREET

R20-30 RESIDENTIAL

PUBLIC OPEN SPACE -
SHARED JUNIOR OVAL

SWALE

RESIDENTIAL

ELDERBERRY DRIVE

CADASTRAL BOUNDARY
SUBJECT TO
SUBDIVISION/AMALGAMATION
AND UTILITY INFRASTRUCTURE
REQUIREMENTS

SITE

HASSELL

BOUNDARIES AND SITE INFORMATION
ARE SUBJECT TO SURVEY



0 10 20 40

1:500 @ A1
1:1000 @ A3

Project Name
WA Schools PPP

Drawing
BALDIVIS PRIMARY SCHOOL
Project Co Site Boundary
for Deed Inclusion

R25 RESIDENTIAL

KOKODA BOULEVARD

MCMILLAN ROAD

LOT 509
ON DP 404207

INDICATIVE WATER CORP EASEMENT

PUBLIC OPEN SPACE
SHARED SENIOR OVAL

CINNABAR LOOP

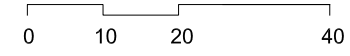
R25 RESIDENTIAL

--- CADASTRAL BOUNDARY
SUBJECT TO
SUBDIVISION/AMALGAMATION
AND UTILITY INFRASTRUCTURE
REQUIREMENTS

- - - SITE

HASSELL

BOUNDARIES AND SITE INFORMATION
ARE SUBJECT TO SURVEY



1:500 @ A1
1:1000 @ A3

Project Name
WA Schools PPP

Drawing
BYFORD PRIMARY SCHOOL
Project Co Site Boundary
for Deed Inclusion

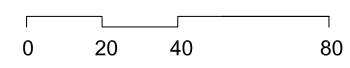


--- CADASTRAL BOUNDARY SUBJECT TO SUBDIVISION/AMALGAMATION AND UTILITY INFRASTRUCTURE REQUIREMENTS

- - - SITE

HASSELL

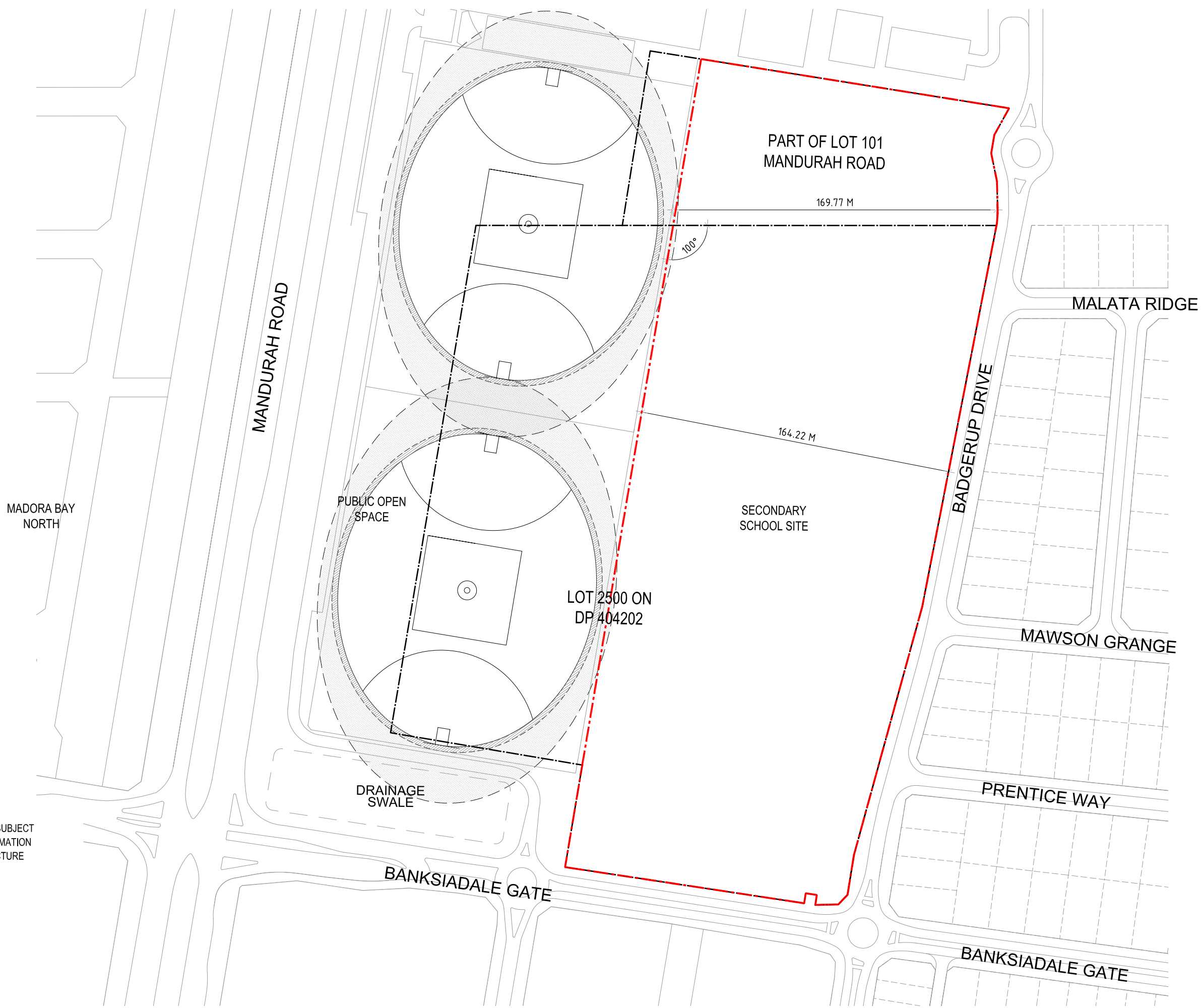
BOUNDARIES AND SITE INFORMATION ARE SUBJECT TO SURVEY



1:1000 @ A1
1:2000 @ A3

Project Name
WA Schools PPP

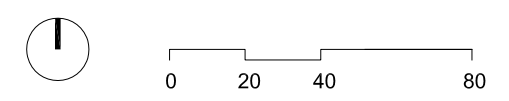
Drawing
ELLENBROOK NORTH
SECONDARY SCHOOL
Project Co Site Boundary
for Deed Inclusion



- - - - CADASTRAL BOUNDARY SUBJECT TO SUBDIVISION/AMALGAMATION AND UTILITY INFRASTRUCTURE REQUIREMENTS
 - . - . - . SITE

HASSELL

BOUNDARIES AND SITE INFORMATION ARE SUBJECT TO SURVEY



1:1000 @ A1
 1:2000 @ A3

Project Name
 WA Schools PPP


Drawing
 LAKELANDS
 SECONDARY SCHOOL
 Project Co Site Boundary
 for Deed Inclusion



- · - · - · - ·
 CADASTRAL BOUNDARY
 SUBJECT TO
 SUBDIVISION/AMALGAMATION
 AND UTILITY INFRASTRUCTURE
 REQUIREMENTS
 - · - · - · - ·
 SITE

HASSELL

BOUNDARIES AND SITE INFORMATION
 ARE SUBJECT TO SURVEY


 0 20 40 80
 1:1000 @ A1
 1:2000 @ A3

Project Name
 WA Schools PPP

Drawing
 HAMMOND PARK
 SECONDARY SCHOOL
 Project Co Site Boundary
 for Deed Inclusion



GRACEFIELD BOULEVARD

PUBLIC OPEN SPACE

RESIDENTIAL

LOT 4000
ON DP 77266

HOWLAND CRESCENT

SKEET ROAD

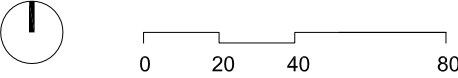
KEANE ROAD

BUSH FOREVER RESERVE

--- CADASTRAL BOUNDARY SUBJECT TO SUBDIVISION/AMALGAMATION AND UTILITY INFRASTRUCTURE REQUIREMENTS
 - - - SITE

HASSELL

BOUNDARIES AND SITE INFORMATION ARE SUBJECT TO SURVEY



1:1000 @ A1
1:2000 @ A3

Project Name
WA Schools PPP

Drawing
HARRISDALE
SECONDARY SCHOOL
Project Co Site Boundary
for Deed Inclusion

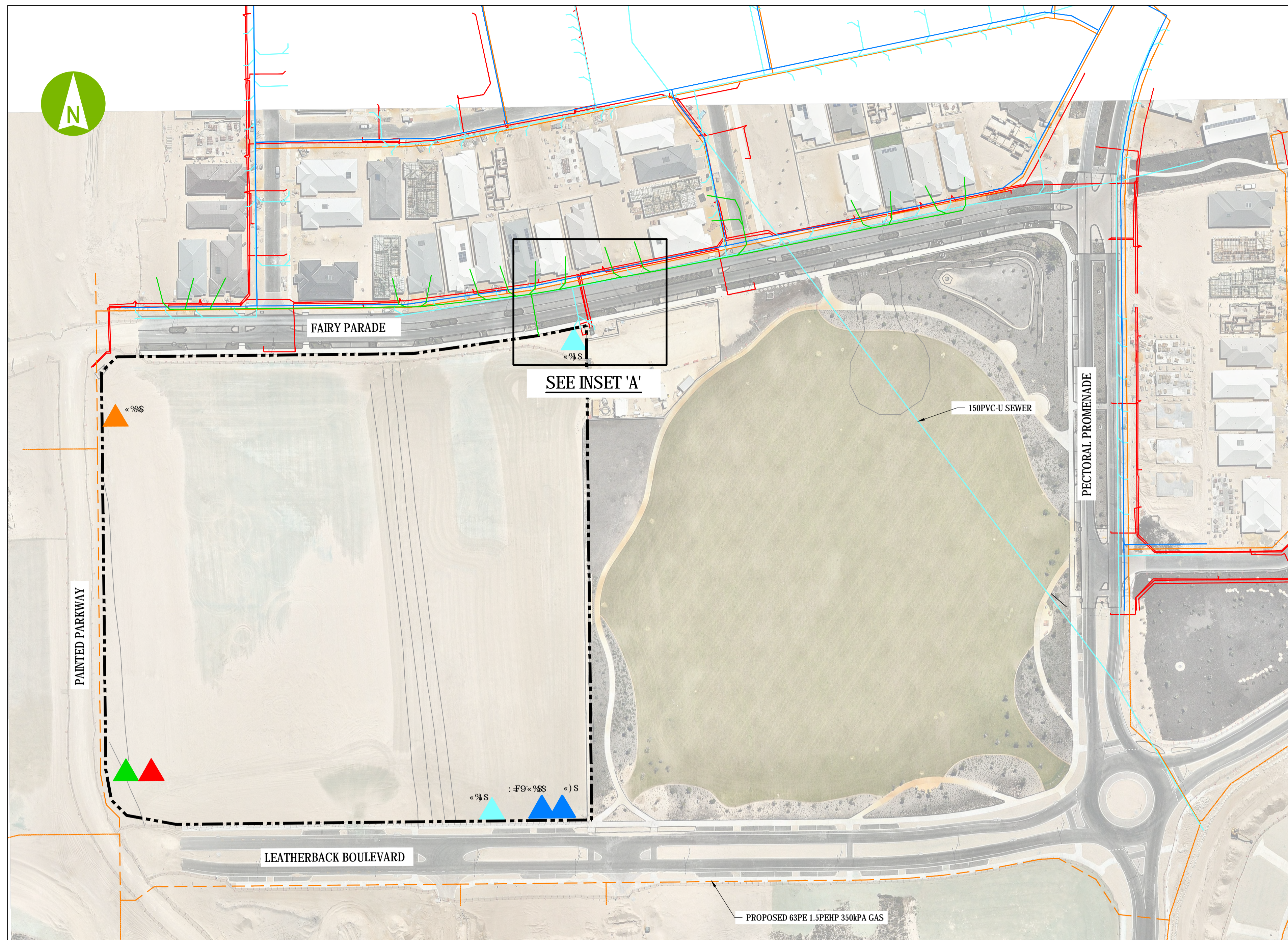
2 SITE ACCESS DATES

Site	Date
Alkimos South West Primary School	1 October 2015
Landsdale East Primary School	1 October 2015
Baldivis Primary School	1 October 2015
Byford South West Primary School	1 October 2015
Ellenbrook North Secondary School – Stages 1 and 2	1 January 2016
Lakelands Secondary School – Stages 1 and 2	1 January 2017
Hammond Park Secondary School – Stages 1 and 2	1 January 2018
Harrisdale Secondary School – Stage 2	1 January 2018

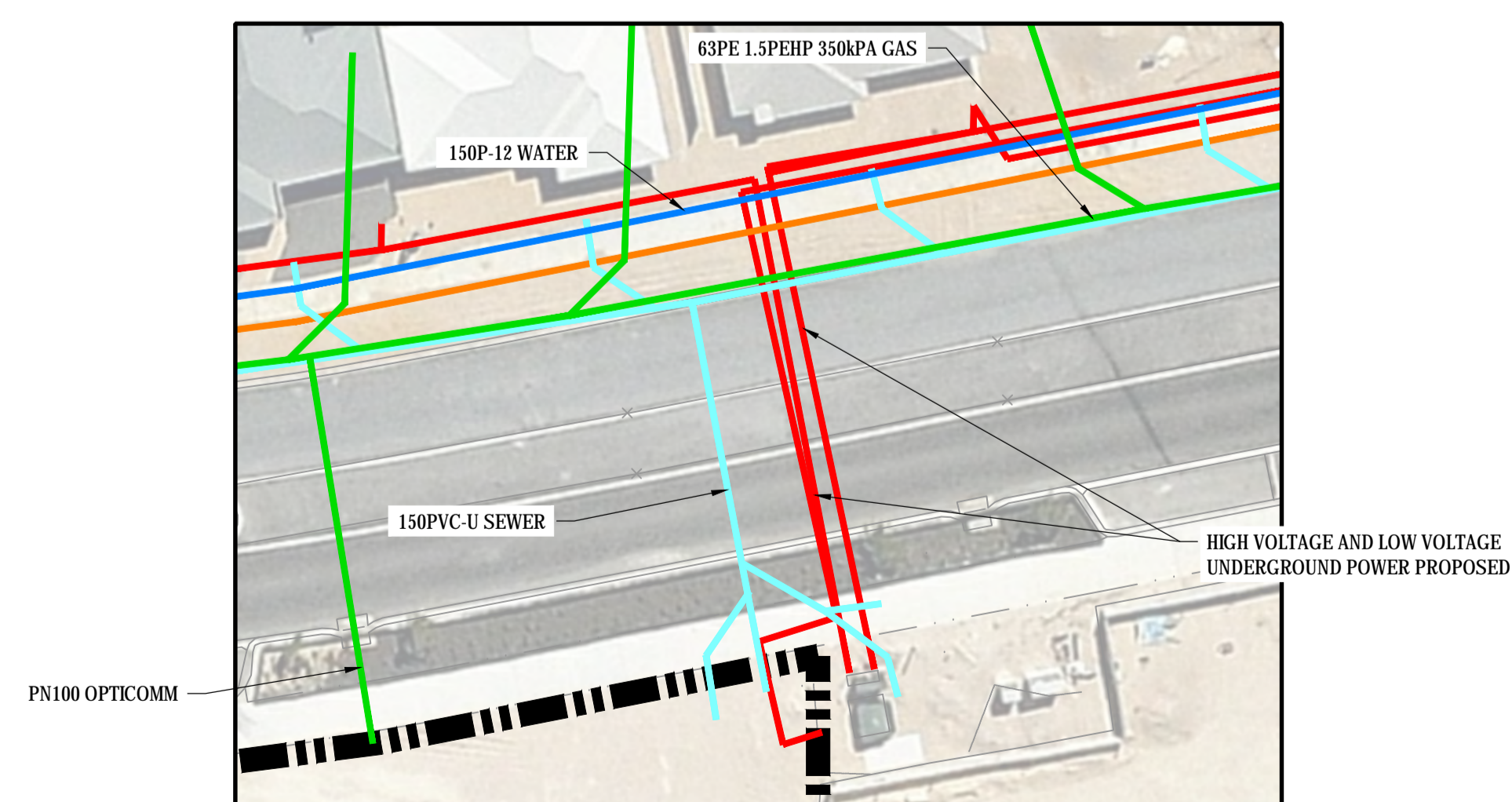
Part B – Utility Infrastructure Connection Plans

WA Schools PPP Project
Project Deed
Utility Connection Point Location Coordinates

Site	Service Connections	(PCG'94)	
		E	N
Alkimos	Gas	36793.0	299775.1
	Water (potable)	36971.4	299619.8
	Water (fire)	36963.4	299619.8
	Sewer (existing)	36977.8	299811.4
	Sewer (existing)	36948.9	299619.3
	HV Power	36810.7	299640.3
	Telecommunications	36800.7	299640.3
Baldivis	Gas	49544.0	224725.3
	Water (potable)	49410.8	224757.5
	Water (fire)	49396.8	224757.5
	Sewer (existing)	49507.7	224573.9
	HV Power	49434.8	224757.5
	Telecommunications	49396.8	224757.4
Byford	Gas	65384.2	233006.0
	Water (potable)	65384.2	233013.1
	Water (fire)	65420.3	233036.4
	Sewer (existing)	65422.2	232878.2
	HV Power	65394.4	233036.5
	Telecommunications	65569.3	232902.8
Lakelands	Gas	44941.8	206155.7
	Water (potable)	44810.1	206159.2
	Water (fire)	45003.5	206420.2
	Sewer (existing)	45005.6	206431.3
	Sewer	44987.6	206345.8
	Sewer	44942.6	206160.6
	HV Power	44987.5	206338.9
	Telecommunications	44990.6	206354.4
Landsdale	Gas	55319.3	278584.6
	Water (potable)	55325.3	278584.6
	Water (fire)	55330.2	278584.6
	Sewer	55307.0	278584.6
	HV Power	55390.6	278770.0
	Telecommunications	55390.7	278735.0
Ellenbrook	Gas	66301.2	284055.3
	Water (potable)	66312.2	284052.5
	Water (fire)	66120.3	284086.8
	Sewer (existing)	66307.1	284054.6
	Sewer	66103.5	283770.4
	Sewer	66063.2	283872.9
	HV Power	66175.4	284077.3
	Telecommunications	66181.2	284076.3
Hammond Park	Gas	53123.0	238818.2
	Water (potable)	53121.4	238951.3
	Water (fire)	53121.1	238970.8
	Sewer	53121.1	238967.2
	Sewer	53123.1	238818.4
	HV Power	53123.1	238787.9
	Telecommunications	53123.1	238807.9



PLAN
SCALE 1:1000



INSET 'A'
SCALE 1:250

LEGEND	
	GAS
	POWER
	TELECOMMUNICATIONS
	WATER
	SEWER
	INDICATIVE SITE BOUNDARY
	GAS CONNECTION
	WATER CONNECTION
	SEWER CONNECTION
	POWER CONNECTION
	TELECOMMUNICATIONS CONNECTION

NOTES

1. ALL DIMENSIONS ARE IN MILLIMETRES UNO.
2. ALL CONTOURS IN METRES (0.5) TO AHD.
3. ALL LEVELS AND DIMENSIONS ARE TO BE CHECKED ON SITE.
4. THIS DRAWING IS INTENDED FOR INCLUSION IN THE PROJECT DEED, NOT FOR CONSTRUCTION PURPOSES AND HAS BEEN PREPARED IN THE ABSENCE OF FULL AND PROPER DUE DILIGENCE. ALL AREAS AND DIMENSIONS ARE INDICATIVE ONLY. FINAL SURVEY AND APPROVAL BY VARIOUS EXTERNAL AUTHORITIES WILL BE REQUIRED.
5. THE SERVICES INDICATED ON THIS DRAWING SHALL BE READ IN CONJUNCTION WITH DIAL-BEFORE-YOU-DIG INFORMATION WHICH IS READILY AVAILABLE.
6. THE EXISTING SERVICES SHOWN HERE WERE TAKEN FROM A DIAL-BEFORE-YOU-DIG DATED DECEMBER 2014. ANY ADDITIONAL SERVICES SINCE WILL NOT BEEN INDICATED THUS.
7. SERVICES INDICATED ON THE DRAWINGS ARE INDICATIVE ONLY AND MAY NOT INCLUDE ALL SERVICES PRESENT.
8. PROJECT CO SHALL COMPLY WITH THE REQUIREMENTS CONTAINED IN THE AUSTRALIAN STANDARDS FOR ENVIRONMENTAL PROTECTION. AT THE TIME OF ISSUE, THIS DRAWING IS BASED UPON SURVEY INFORMATION PRESENTED BY OTHER CONSULTANT DRAWINGS WHICH ARE KNOWN TO BE PARTIALLY COMPLETE.
9. THIS DRAWING IS NOT YET SUPPORTED BY FULL ENGINEERING DESIGN PROCESS.

REV	DESCRIPTION	DATE	APP
H	ISSUED FOR PROJECT DEEP INCLUSION	10.09.15	
G	ISSUED FOR NEGOTIATION	28.08.15	
F	ISSUED FOR NEGOTIATION	30.07.15	
E	ISSUED FOR NEGOTIATION	16.07.15	
D	AMENDED WITH STATE COMMENTS	28.04.15	
C	AMENDED WITH STATE COMMENTS	09.04.15	
B	AMENDED WITH STATE COMMENTS	01.04.15	
A	ISSUED FOR INFORMATION	12.03.15	



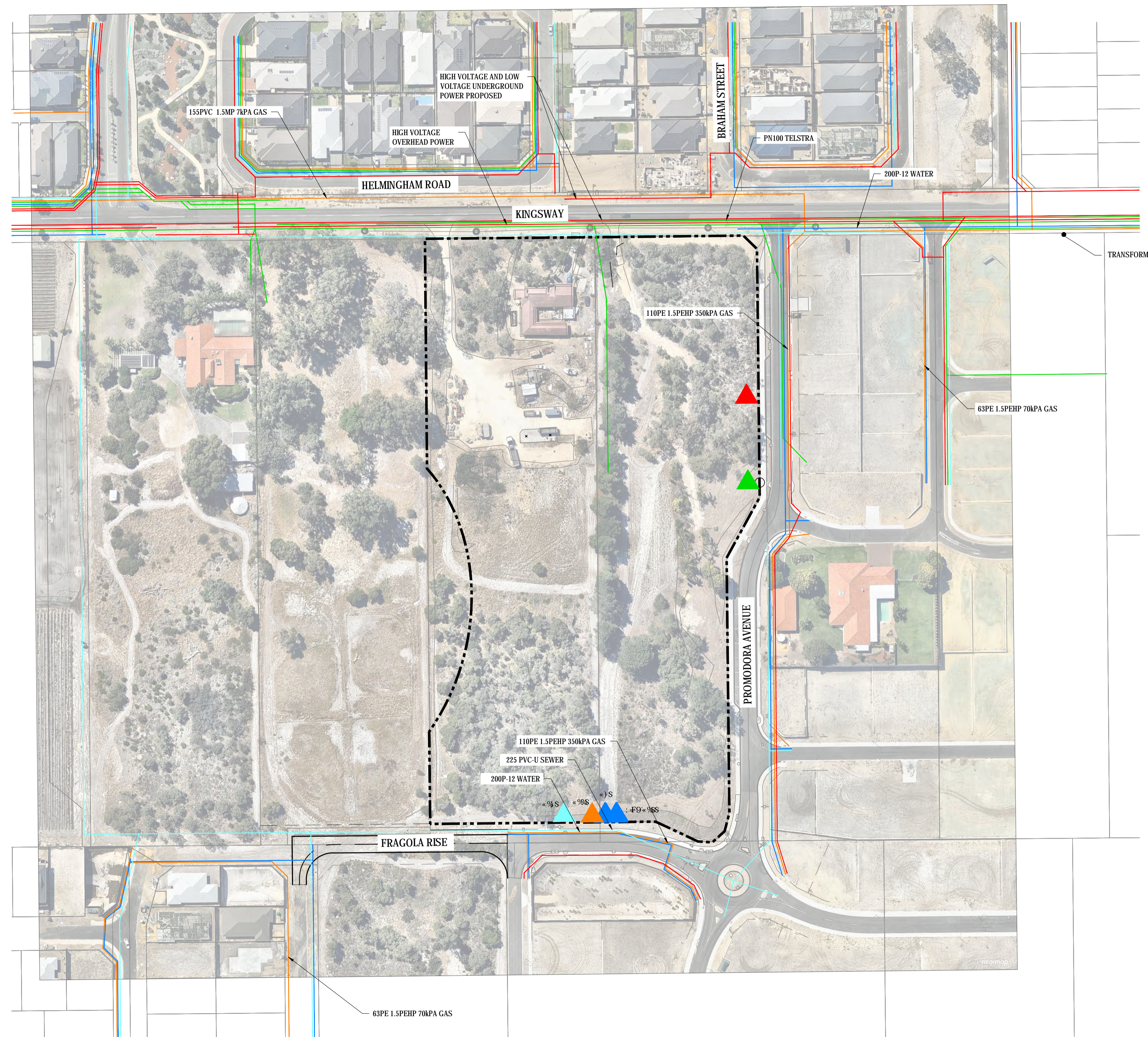
AURECON PROJECT ID - 242591



WASP SURROUNDING WORKS
ALKIMOS SOUTH WEST PRIMARY SCHOOL
UTILITY INFRASTRUCTURE
CONNECTION POINT PLAN FOR PROJECT DEED INCLUSION

DRAWN	JJL	DESIGNED	RR	REDUCTION
CHECKED	DF	PRINCIPAL		
APPROVED	PH			
SCALE	1:1000	DATE	FEB 2015	DRAWING No.
PROJ No.	-	FILE No.	WASP-AUR-CV-DWG-0001	DWG-0001 H

THIS IS A CADD DRAWING
DO NOT AMEND MANUALLY



LEGEND

- GAS
- POWER
- TELECOMMUNICATIONS
- WATER
- SEWER
- INDICATIVE SITE BOUNDARY
- ▲ GAS CONNECTION
- ▲ WATER CONNECTION
- ▲ SEWER CONNECTION
- ▲ POWER CONNECTION
- ▲ TELECOMMUNICATIONS CONNECTION

- NOTES**
1. ALL DIMENSIONS ARE IN MILLIMETRES UNO.
 2. ALL CONTOURS IN METRES (0.5) TO AHD.
 3. ALL LEVELS AND DIMENSIONS ARE TO BE CHECKED ON SITE.
 4. THIS DRAWING IS INTENDED FOR INCLUSION IN THE PROJECT DEED, NOT FOR CONSTRUCTION PURPOSES AND HAS BEEN PREPARED IN THE ABSENCE OF FULL AND PROPER DUE DILIGENCE. ALL AREAS AND DIMENSIONS ARE INDICATIVE ONLY. FINAL SURVEY AND APPROVAL BY VARIOUS EXTERNAL AUTHORITIES WILL BE REQUIRED.
 5. THE SERVICES INDICATED ON THIS DRAWING SHALL BE READ IN CONJUNCTION WITH DIAL-BEFORE-YOU-DIG INFORMATION WHICH IS READILY AVAILABLE.
 6. THE EXISTING SERVICES SHOWN HERE WERE TAKEN FROM A DIAL-BEFORE-YOU-DIG DATED DECEMBER 2014. ANY ADDITIONAL SERVICES SINCE WILL NOT BE INDICATED THUS.
 7. SERVICES INDICATED ON THE DRAWINGS ARE INDICATIVE ONLY AND MAY NOT INCLUDE ALL SERVICES PRESENT.
 8. PROJECT CO SHALL COMPLY WITH THE REQUIREMENTS CONTAINED IN THE AUSTRALIAN STANDARDS FOR ENVIRONMENTAL PROTECTION. AT THE TIME OF ISSUE, THIS DRAWING IS BASED UPON SURVEY INFORMATION PRESENTED BY OTHER CONSULTANT DRAWINGS WHICH ARE KNOWN TO BE PARTIALLY COMPLETE.
 9. THIS DRAWING IS NOT YET SUPPORTED BY FULL ENGINEERING DESIGN PROCESS.

I	ISSUED FOR PROJECT DEED INCLUSION	10.09.15
H	ISSUED FOR NEGOTIATION	03.08.15
G	ISSUED FOR NEGOTIATION	30.07.15
F	ISSUED FOR NEGOTIATION	16.07.15
E	AMENDED WITH STATE COMMENTS	29.04.15
D	AMENDED WITH STATE COMMENTS	28.04.15
C	AMENDED WITH STATE COMMENTS	09.04.15
B	AMENDED WITH STATE COMMENTS	01.04.15
A	ISSUED FOR INFORMATION	12.03.15
REV	DESCRIPTION	DATE APP



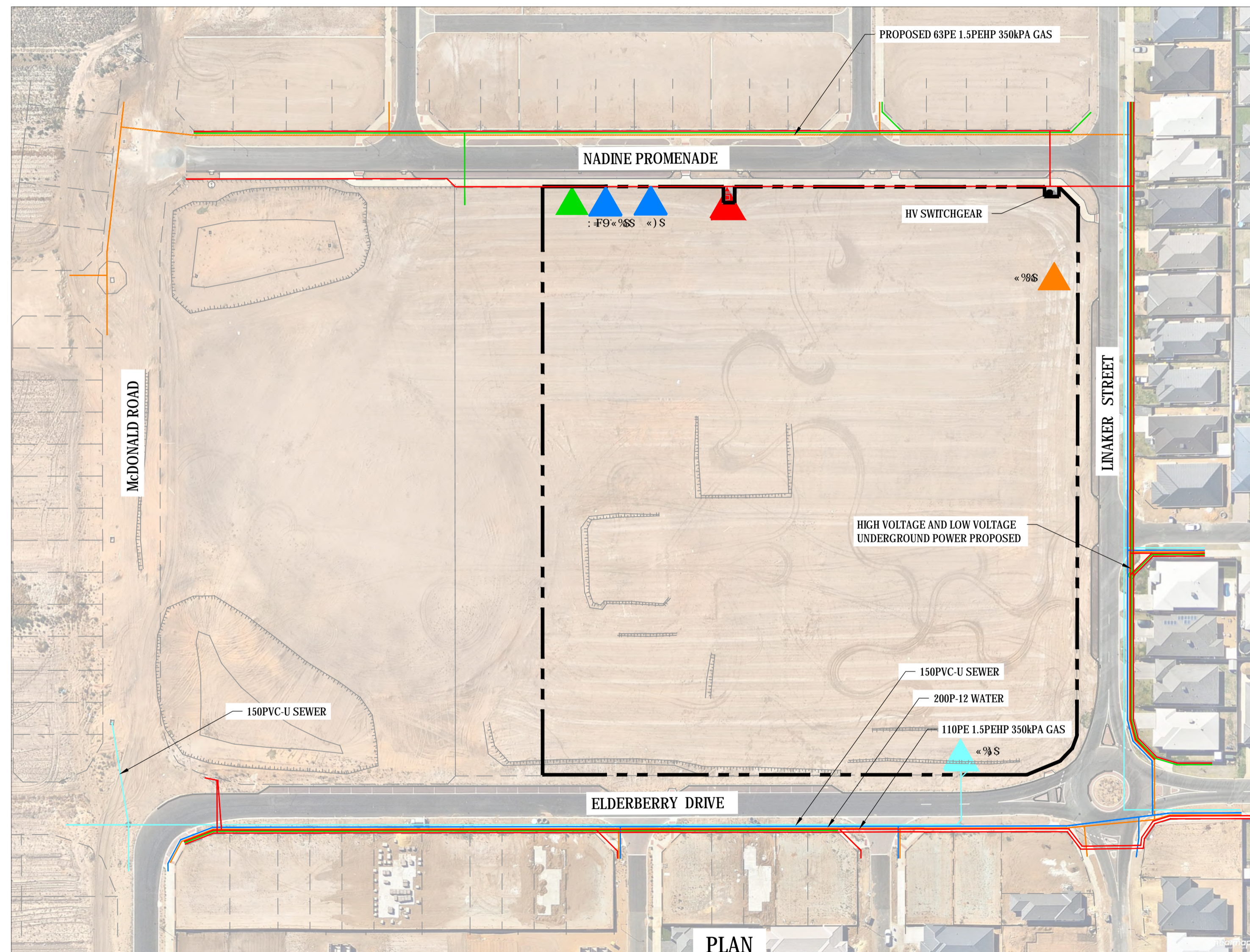
AURECON PROJECT ID : 242591



WASP SURROUNDING WORKS
EAST LANDSDALE PRIMARY SCHOOL
UTILITY INFRASTRUCTURE
CONNECTION POINT PLAN FOR PROJECT DEED INCLUSION

DRAWN	JJL	DESIGNED	RR	REDUCTION
CHECKED	DF	PRINCIPAL		
APPROVED	PH			
SCALE	1:1000	DATE	FEB 2015	DRAWING No.
PROJ No.	-	FILE No.	WASP-AUR-CV-DWG-0005	DWG-0005 I

PLAN
SCALE 1:1000



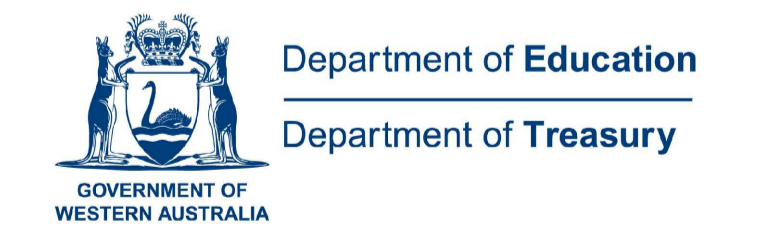
LEGEND	
	GAS
	POWER
	TELECOMMUNICATIONS
	WATER
	SEWER
	INDICATIVE SITE BOUNDARY
	GAS CONNECTION
	WATER CONNECTION
	SEWER CONNECTION
	POWER CONNECTION
	TELECOMMUNICATIONS CONNECTION

- NOTES**
- ALL DIMENSIONS ARE IN MILLIMETRES UNO.
 - ALL CONTOURS IN METRES (0.5) TO AHD.
 - ALL LEVELS AND DIMENSIONS ARE TO BE CHECKED ON SITE.
 - THIS DRAWING IS INTENDED FOR INCLUSION IN THE PROJECT DEED, NOT FOR CONSTRUCTION PURPOSES AND HAS BEEN PREPARED IN THE ABSENCE OF FULL AND PROPER DUE DILIGENCE. ALL AREAS AND DIMENSIONS ARE INDICATIVE ONLY. FINAL SURVEY AND APPROVAL BY VARIOUS EXTERNAL AUTHORITIES WILL BE REQUIRED.
 - THE SERVICES INDICATED ON THIS DRAWING SHALL BE READ IN CONJUNCTION WITH DIAL-BEFORE-YOU-DIG INFORMATION WHICH IS READILY AVAILABLE.
 - THE EXISTING SERVICES SHOWN HERE WERE TAKEN FROM A DIAL-BEFORE-YOU-DIG DATED DECEMBER 2014. ANY ADDITIONAL SERVICES SINCE WILL NOT BEEN INDICATED THUS.
 - SERVICES INDICATED ON THE DRAWINGS ARE INDICATIVE ONLY AND MAY NOT INCLUDE ALL SERVICES PRESENT.
 - PROJECT CO SHALL COMPLY WITH THE REQUIREMENTS CONTAINED IN THE AUSTRALIAN STANDARDS FOR ENVIRONMENTAL PROTECTION. AT THE TIME OF ISSUE, THIS DRAWING IS BASED UPON SURVEY INFORMATION PRESENTED BY OTHER CONSULTANT DRAWINGS WHICH ARE KNOWN TO BE PARTIALLY COMPLETE.
 - THIS DRAWING IS NOT YET SUPPORTED BY FULL ENGINEERING DESIGN PROCESS.

I	ISSUED FOR PROJECT DEED INCLUSION	10.09.15	
H	ISSUED FOR NEGOTIATION	28.08.15	
G	ISSUED FOR NEGOTIATION	30.07.15	
F	ISSUED FOR NEGOTIATION	16.07.15	
E	AMENDED WITH STATE COMMENTS	29.04.15	
D	AMENDED WITH STATE COMMENTS	28.04.15	
C	AMENDED WITH STATE COMMENTS	09.04.15	
B	AMENDED WITH STATE COMMENTS	01.04.15	
A	ISSUED FOR INFORMATION	12.03.15	
REV	DESCRIPTION	DATE	APP



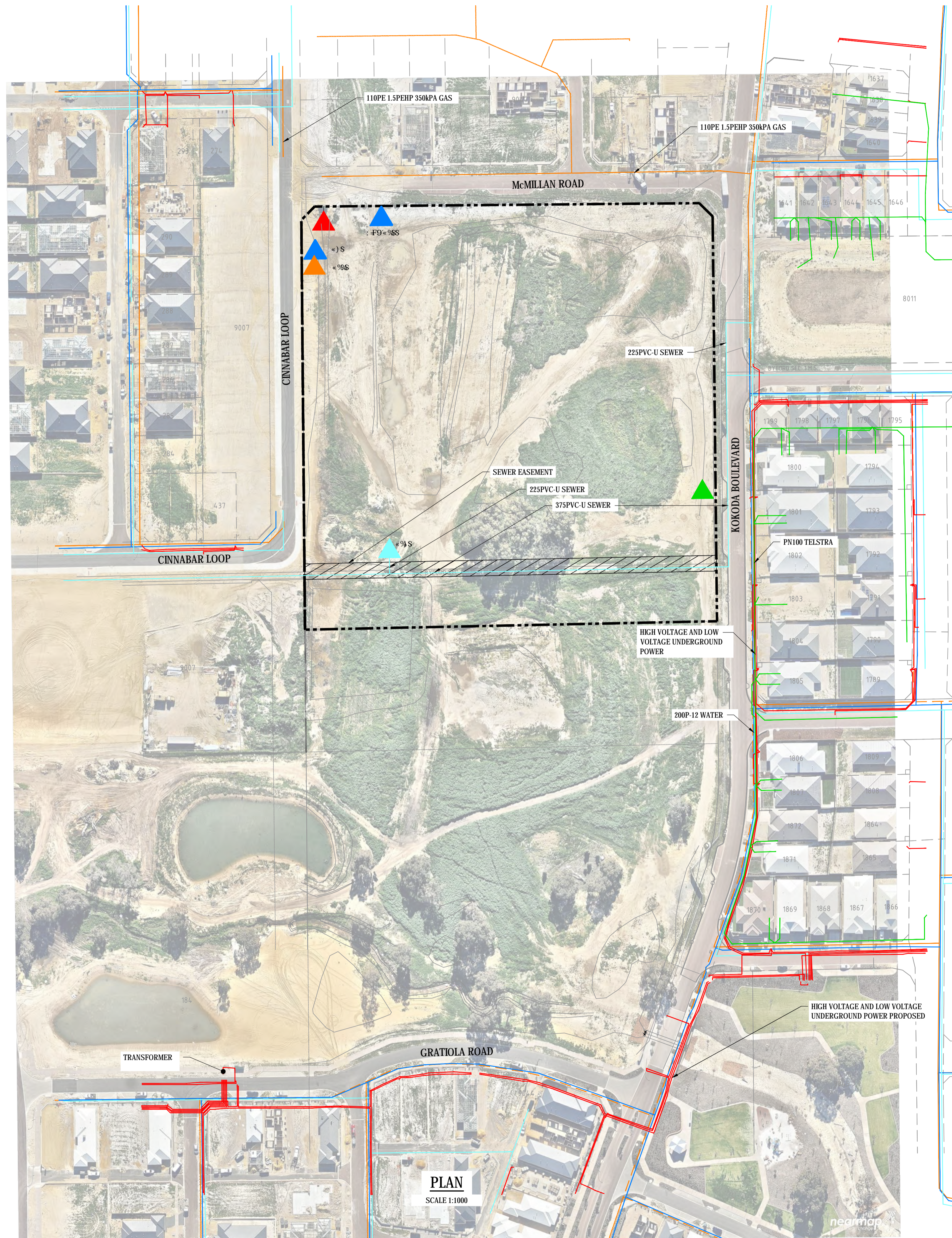
AURECON PROJECT ID - 242591



WASP SURROUNDING WORKS
BALDIVIS NORTH PRIMARY SCHOOL
UTILITY INFRASTRUCTURE
CONNECTION POINT PLAN FOR PROJECT DEED INCLUSION

DRAWN	JJL	DESIGNED	RR	REDUCTION
CHECKED	DF	PRINCIPAL		
APPROVED	PH			
SCALE 1:1000	DATE FEB 2015	DRAWING No.		
PROJ No. -	FILE No. WASP-AUR-CV-DWG-0002	DWG-0002 1		

THIS IS A CADD DRAWING
DO NOT AMEND MANUALLY



LEGEND	
	GAS
	POWER
	TELECOMMUNICATIONS
	WATER
	SEWER
	INDICATIVE SITE BOUNDARY
	GAS CONNECTION
	WATER CONNECTION
	SEWER CONNECTION
	POWER CONNECTION
	TELECOMMUNICATIONS CONNECTION

- NOTES**
- ALL DIMENSIONS ARE IN MILLIMETRES UNO.
 - ALL CONTOURS IN METRES (0.5) TO AHD.
 - ALL LEVELS AND DIMENSIONS ARE TO BE CHECKED ON SITE.
 - THIS DRAWING IS INTENDED FOR INCLUSION IN THE PROJECT DEED, NOT FOR CONSTRUCTION PURPOSES AND HAS BEEN PREPARED IN THE ABSENCE OF FULL AND PROPER DUE DILIGENCE. ALL AREAS AND DIMENSIONS ARE INDICATIVE ONLY. FINAL SURVEY AND APPROVAL BY VARIOUS EXTERNAL AUTHORITIES WILL BE REQUIRED.
 - THE SERVICES INDICATED ON THIS DRAWING SHALL BE READ IN CONJUNCTION WITH DIAL-BEFORE-YOU-DIG INFORMATION WHICH IS READILY AVAILABLE.
 - THE EXISTING SERVICES SHOWN HERE WERE TAKEN FROM A DIAL-BEFORE-YOU-DIG DATED DECEMBER 2014. ANY ADDITIONAL SERVICES SINCE WILL NOT BE INDICATED THUS.
 - SERVICES INDICATED ON THE DRAWINGS ARE INDICATIVE ONLY AND MAY NOT INCLUDE ALL SERVICES PRESENT.
 - PROJECT CO SHALL COMPLY WITH THE REQUIREMENTS CONTAINED IN THE AUSTRALIAN STANDARDS FOR ENVIRONMENTAL PROTECTION.
 - AT THE TIME OF ISSUE, THIS DRAWING IS BASED UPON SURVEY INFORMATION PRESENTED BY OTHER CONSULTANT DRAWINGS WHICH ARE KNOWN TO BE PARTIALLY COMPLETE.
 - THIS DRAWING IS NOT YET SUPPORTED BY FULL ENGINEERING DESIGN PROCESS.

REV	DESCRIPTION	DATE	APP
H	ISSUED FOR PROJECT DEED INCLUSION	10.09.15	
G	ISSUED FOR NEGOTIATION	28.08.15	
F	ISSUED FOR NEGOTIATION	30.07.15	
E	ISSUED FOR NEGOTIATION	16.07.15	
D	AMENDED WITH STATE COMMENTS	28.04.15	
C	AMENDED WITH STATE COMMENTS	09.04.15	
B	AMENDED WITH STATE COMMENTS	01.04.15	
A	ISSUED FOR INFORMATION	12.03.15	



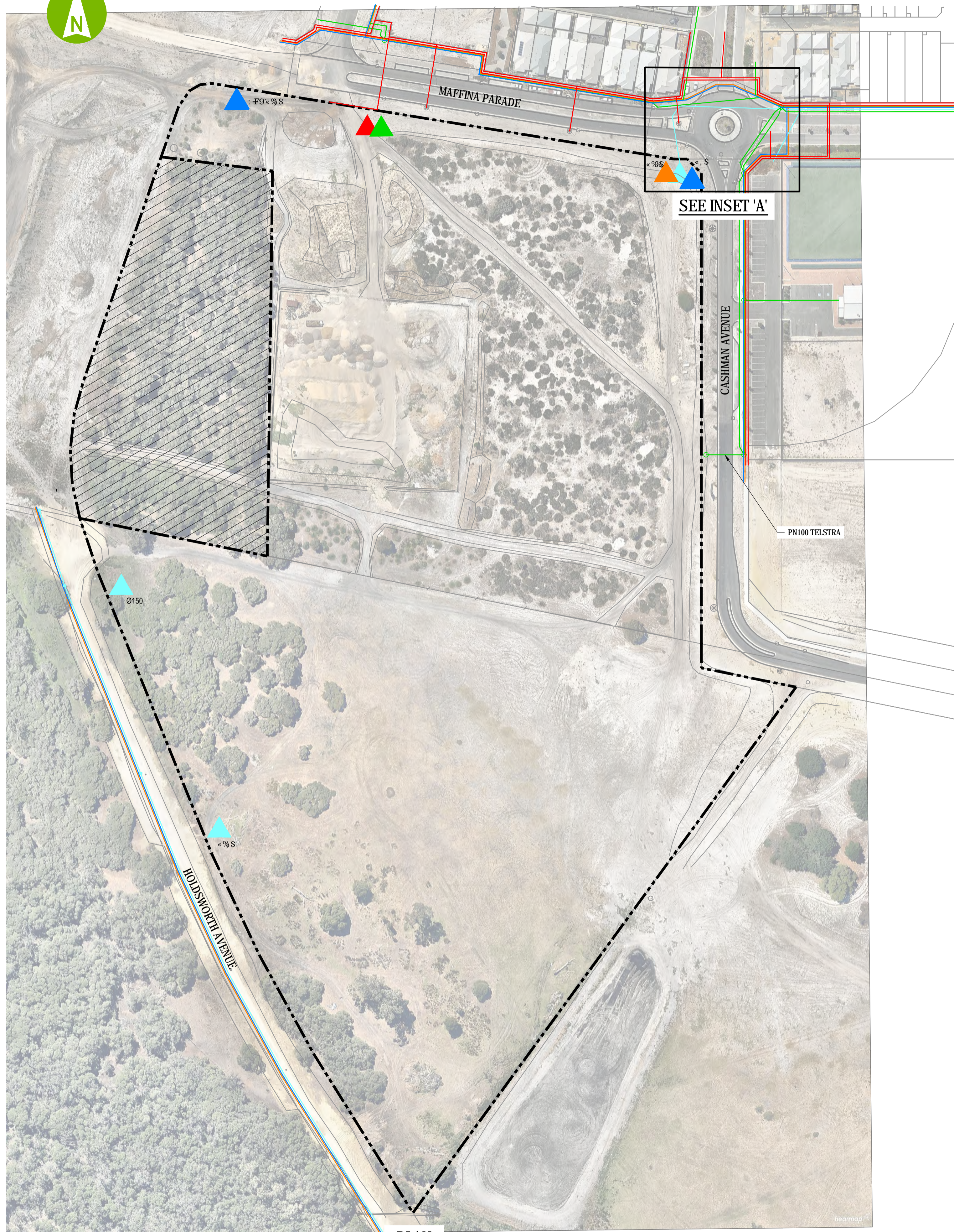
AURECON PROJECT ID - 242591



WASP SURROUNDING WORKS
 BYFORD SOUTH WEST PRIMARY SCHOOL
 UTILITY INFRASTRUCTURE
 CONNECTION POINT PLAN FOR PROJECT DEED INCLUSION

DRAWN	JJL	DESIGNED	RR	REDUCTION
CHECKED	DF	PRINCIPAL		
APPROVED	PH			
SCALE	1:1000	DATE	FEB 2015	DRAWING No.
PROJ No.	-	FILE No.	WASP-AUR-CV-DWG-0003	DWG-0003 H

THIS IS A CADD DRAWING
 DO NOT AMEND MANUALLY

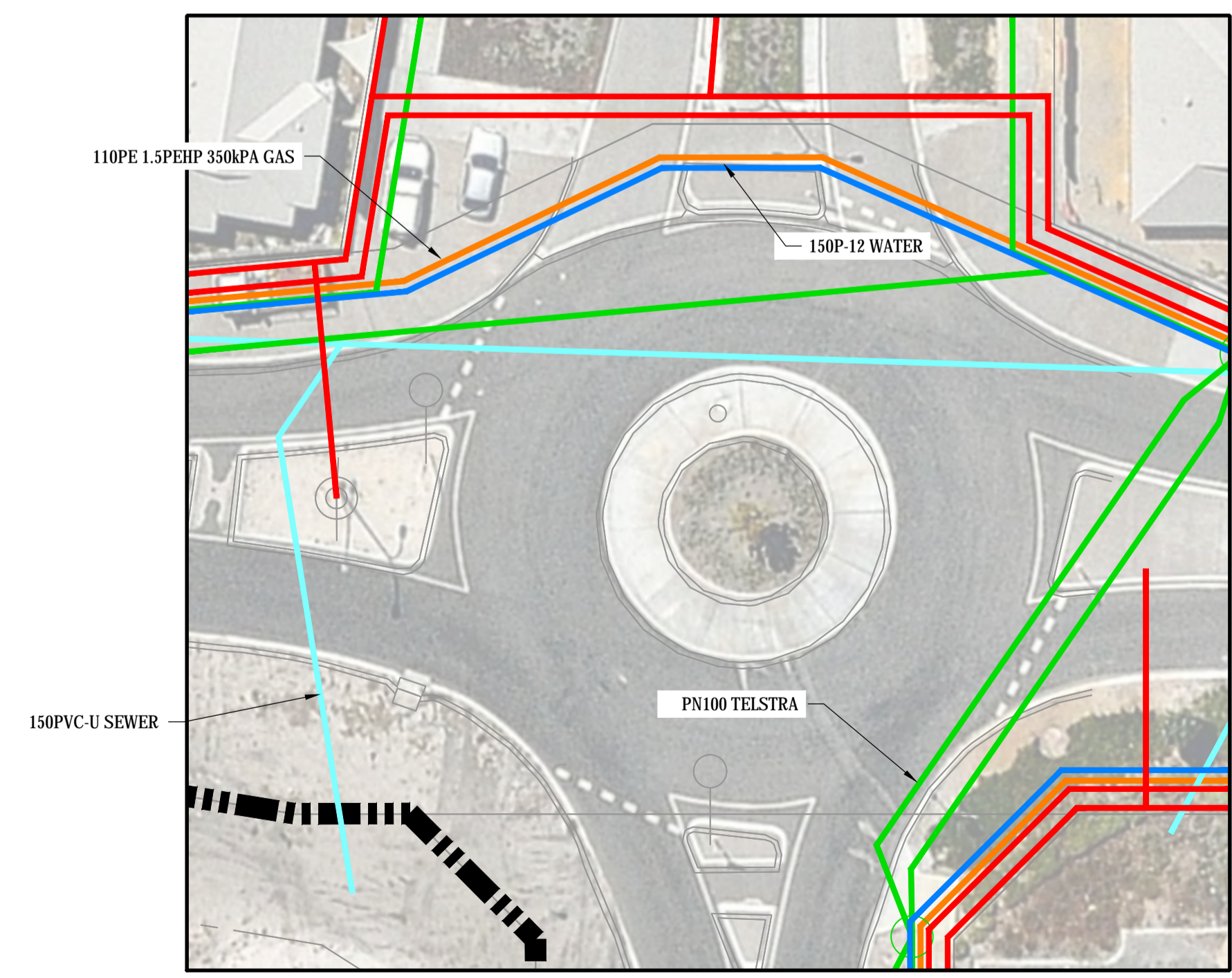


PLAN
SCALE 1:1000

LEGEND	
	GAS
	POWER
	TELECOMMUNICATIONS
	WATER
	SEWER
	INDICATIVE SITE BOUNDARY
	GAS CONNECTION
	WATER CONNECTION
	SEWER CONNECTION
	POWER CONNECTION
	TELECOMMUNICATIONS CONNECTION

- NOTES**
1. ALL DIMENSIONS ARE IN MILLIMETRES UNO.
 2. ALL CONTOURS IN METRES (0.5) TO AHD.
 3. ALL LEVELS AND DIMENSIONS ARE TO BE CHECKED ON SITE.
 4. THIS DRAWING IS INTENDED FOR INCLUSION IN THE PROJECT DEED, NOT FOR CONSTRUCTION PURPOSES AND HAS BEEN PREPARED IN THE ABSENCE OF FULL AND PROPER DUE DILIGENCE. ALL AREAS AND DIMENSIONS ARE INDICATIVE ONLY. FINAL SURVEY AND APPROVAL BY VARIOUS EXTERNAL AUTHORITIES WILL BE REQUIRED.
 5. THE SERVICES INDICATED ON THIS DRAWING SHALL BE READ IN CONJUNCTION WITH DIAL-BEFORE-YOU-DIG INFORMATION WHICH IS READILY AVAILABLE.
 6. THE EXISTING SERVICES SHOWN HERE WERE TAKEN FROM A DIAL-BEFORE-YOU-DIG DATED DECEMBER 2014. ANY ADDITIONAL SERVICES SINCE WILL NOT BEEN INDICATED THUS.
 7. SERVICES INDICATED ON THE DRAWINGS ARE INDICATIVE ONLY AND MAY NOT INCLUDE ALL SERVICES PRESENT.
 8. PROJECT CO SHALL COMPLY WITH THE REQUIREMENTS CONTAINED IN THE AUSTRALIAN STANDARDS FOR ENVIRONMENTAL PROTECTION.
 9. AT THE TIME OF ISSUE, THIS DRAWING IS BASED UPON SURVEY INFORMATION PRESENTED BY OTHER CONSULTANT DRAWINGS WHICH ARE KNOWN TO BE PARTIALLY COMPLETE.
 10. THIS DRAWING IS NOT YET SUPPORTED BY FULL ENGINEERING DESIGN PROCESS.

I	ISSUED FOR PROJECT DEED INCLUSION	10.09.15	
H	ISSUED FOR NEGOTIATION	04.08.15	
G	ISSUED FOR NEGOTIATION	30.07.15	
F	ISSUED FOR NEGOTIATION	16.07.15	
E	AMENDED WITH STATE COMMENTS	29.04.15	
D	AMENDED WITH STATE COMMENTS	28.04.15	
C	AMENDED WITH STATE COMMENTS	09.04.15	
B	AMENDED WITH STATE COMMENTS	01.04.15	
A	ISSUED FOR INFORMATION	12.03.15	
REV	DESCRIPTION	DATE	APP



INSET 'A'
SCALE 1:250



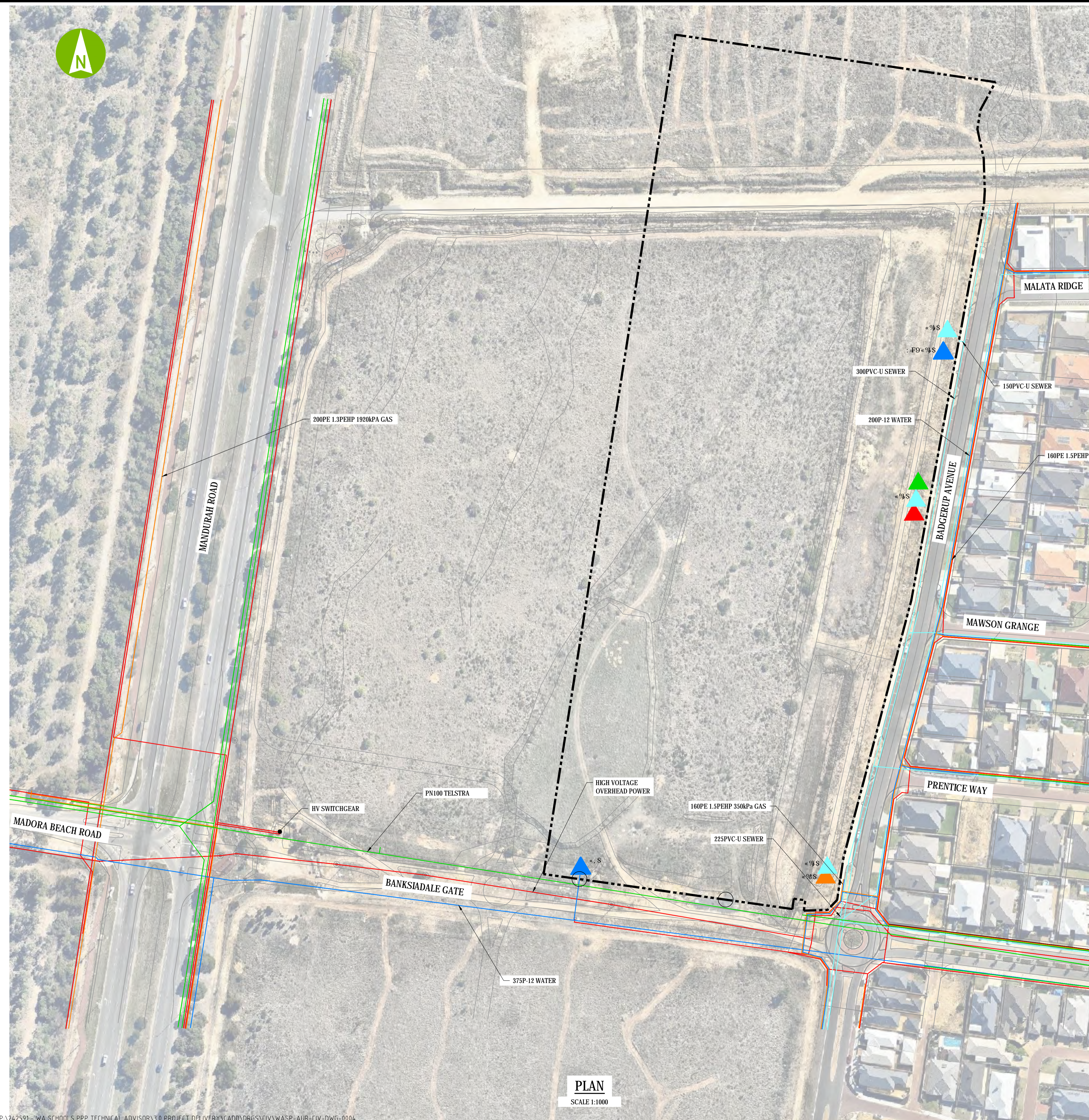
AURECON PROJECT ID - 242591



WASP SURROUNDING WORKS
ELLENBROOK NORTH HIGH SCHOOL
UTILITY INFRASTRUCTURE
CONNECTION POINT PLAN FOR PROJECT DEED INCLUSION

DRAWN	JJL	DESIGNED	RR	REDUCTION
CHECKED	DF	PRINCIPAL		
APPROVED	PH			
SCALE	1:1000	DATE	FEB 2015	DRAWING No.
PROJ No.	-	FILE No.	WASP-AUR-CV-DWG-0006	DWG-0006 I

THIS IS A CADD DRAWING
DO NOT AMEND MANUALLY



LEGEND

	GAS
	POWER
	TELECOMMUNICATIONS
	WATER
	SEWER
	INDICATIVE SITE BOUNDARY
	GAS CONNECTION
	WATER CONNECTION
	SEWER CONNECTION
	POWER CONNECTION
	TELECOMMUNICATIONS CONNECTION

- NOTES**
1. ALL DIMENSIONS ARE IN MILLIMETRES UNO.
 2. ALL CONTOURS IN METRES (0.5) TO AHD.
 3. ALL LEVELS AND DIMENSIONS ARE TO BE CHECKED ON SITE.
 4. THIS DRAWING IS INTENDED FOR INCLUSION IN THE PROJECT DEED, NOT FOR CONSTRUCTION PURPOSES AND HAS BEEN PREPARED IN THE ABSENCE OF FULL AND PROPER DUE DILIGENCE. ALL AREAS AND DIMENSIONS ARE INDICATIVE ONLY. FINAL SURVEY AND APPROVAL BY VARIOUS EXTERNAL AUTHORITIES WILL BE REQUIRED.
 5. THE SERVICES INDICATED ON THIS DRAWING SHALL BE READ IN CONJUNCTION WITH DIAL-BEFORE-YOU-DIG INFORMATION WHICH IS READILY AVAILABLE.
 6. THE EXISTING SERVICES SHOWN HERE WERE TAKEN FROM A DIAL-BEFORE-YOU-DIG DATED DECEMBER 2014. ANY ADDITIONAL SERVICES SINCE WILL NOT BEEN INDICATED THUS.
 7. SERVICES INDICATED ON THE DRAWINGS ARE INDICATIVE ONLY AND MAY NOT INCLUDE ALL SERVICES PRESENT.
 8. PROJECT CO SHALL COMPLY WITH THE REQUIREMENTS CONTAINED IN THE AUSTRALIAN STANDARDS FOR ENVIRONMENTAL PROTECTION.
 9. AT THE TIME OF ISSUE, THIS DRAWING IS BASED UPON SURVEY INFORMATION PRESENTED BY OTHER CONSULTANT DRAWINGS WHICH ARE KNOWN TO BE PARTIALLY COMPLETE.
 10. THIS DRAWING IS NOT YET SUPPORTED BY FULL ENGINEERING DESIGN PROCESS.

REV	DESCRIPTION	DATE	APP
H	ISSUED FOR PROJECT DEED INCLUSION	10.09.15	
G	ISSUED FOR NEGOTIATION	30.07.15	
F	ISSUED FOR NEGOTIATION	16.07.15	
E	AMENDED WITH STATE COMMENTS	29.04.15	
D	AMENDED WITH STATE COMMENTS	28.04.15	
C	AMENDED WITH STATE COMMENTS	09.04.15	
B	AMENDED WITH STATE COMMENTS	01.04.15	
A	ISSUED FOR INFORMATION	12.03.15	



AURECON PROJECT ID - 242591

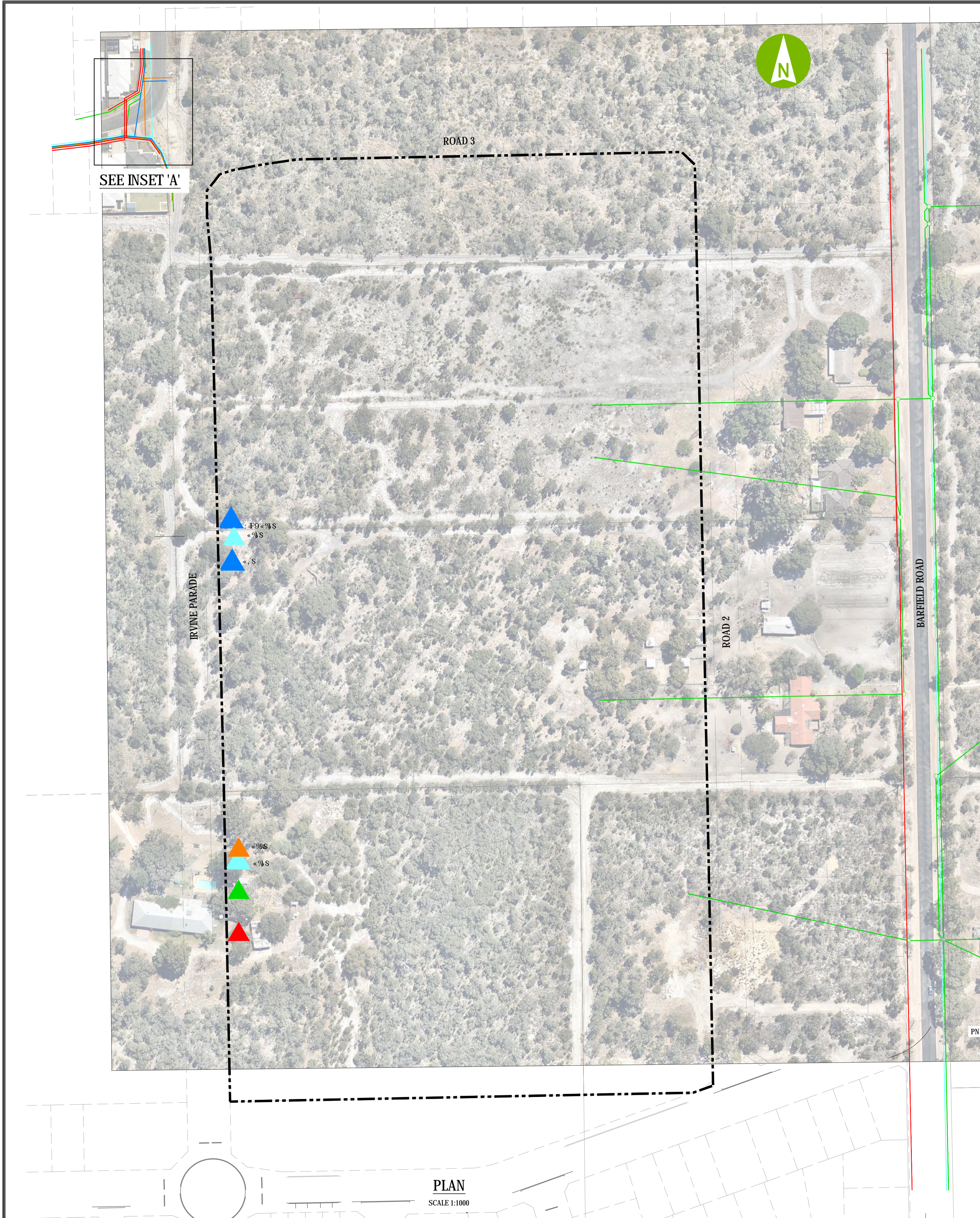


WASP SURROUNDING WORKS
LAKELANDS HIGH SCHOOL
UTILITY INFRASTRUCTURE
CONNECTION POINT PLAN FOR PROJECT DEED INCLUSION

DRAWN	JJL	DESIGNED	RR	REDUCTION
CHECKED	DF	PRINCIPAL		
APPROVED	PH			
SCALE	1:1000	DATE	FEB 2015	DRAWING No.
PROJ No.	-	FILE No.	WASP-AUR-CV-DWG-0004	DWG-0004 H

THIS IS A CADD DRAWING
DO NOT AMEND MANUALLY

PLAN
SCALE 1:1000



LEGEND

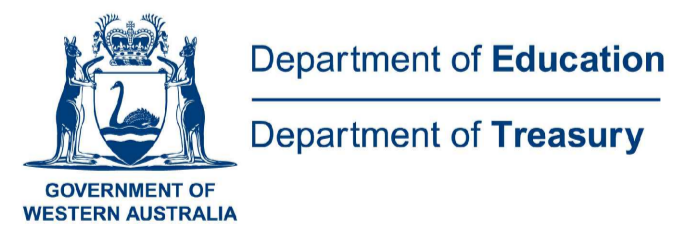
	GAS
	POWER
	TELECOMMUNICATIONS
	WATER
	SEWER
	INDICATIVE SITE BOUNDARY
	GAS CONNECTION
	WATER CONNECTION
	SEWER CONNECTION
	POWER CONNECTION
	TELECOMMUNICATIONS CONNECTION

- NOTES**
1. ALL DIMENSIONS ARE IN MILLIMETRES UNO.
 2. ALL CONTOURS IN METRES (0.5) TO AHD.
 3. ALL LEVELS AND DIMENSIONS ARE TO BE CHECKED ON SITE.
 4. THIS DRAWING IS INTENDED FOR INCLUSION IN THE PROJECT DEED, NOT FOR CONSTRUCTION PURPOSES AND HAS BEEN PREPARED IN THE ABSENCE OF FULL AND PROPER DUE DILIGENCE. ALL AREAS AND DIMENSIONS ARE INDICATIVE ONLY. FINAL SURVEY AND APPROVAL BY VARIOUS EXTERNAL AUTHORITIES WILL BE REQUIRED.
 5. THE SERVICES INDICATED ON THIS DRAWING SHALL BE READ IN CONJUNCTION WITH DIAL-BEFORE-YOU-DIG INFORMATION WHICH IS READILY AVAILABLE.
 6. THE EXISTING SERVICES SHOWN HERE WERE TAKEN FROM A DIAL-BEFORE-YOU-DIG DATED DECEMBER 2014. ANY ADDITIONAL SERVICES SINCE WILL NOT BEEN INDICATED THUS.
 7. SERVICES INDICATED ON THE DRAWINGS ARE INDICATIVE ONLY AND MAY NOT INCLUDE ALL SERVICES PRESENT.
 8. PROJECT CO SHALL COMPLY WITH THE REQUIREMENTS CONTAINED IN THE AUSTRALIAN STANDARDS FOR ENVIRONMENTAL PROTECTION.
 9. AT THE TIME OF ISSUE, THIS DRAWING IS BASED UPON SURVEY INFORMATION PRESENTED BY OTHER CONSULTANT DRAWINGS WHICH ARE KNOWN TO BE PARTIALLY COMPLETE.
 10. THIS DRAWING IS NOT YET SUPPORTED BY FULL ENGINEERING DESIGN PROCESS.

REV	DESCRIPTION	DATE	APP
H	ISSUED FOR PROJECT DEED INCLUSION	10.09.15	
G	ISSUED FOR NEGOTIATION	28.08.15	
F	ISSUED FOR NEGOTIATION	30.07.15	
E	ISSUED FOR NEGOTIATION	16.07.15	
D	AMENDED WITH STATE COMMENTS	28.04.15	
C	AMENDED WITH STATE COMMENTS	09.04.15	
B	AMENDED WITH STATE COMMENTS	01.04.15	
A	ISSUED FOR INFORMATION	12.03.15	

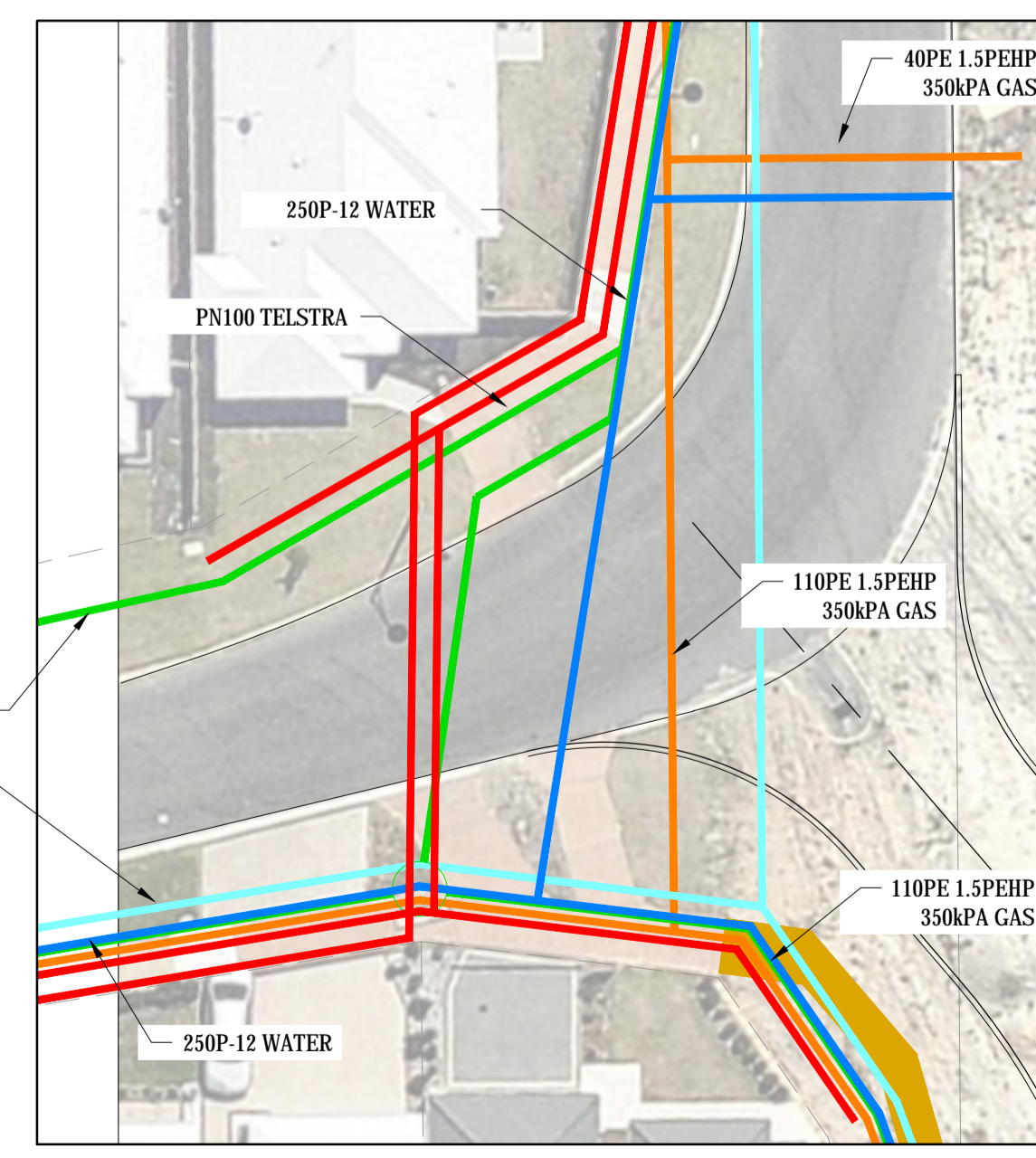


AURECON PROJECT ID: 242591



WASP SURROUNDING WORKS
 HAMMOND PARK HIGH SCHOOL
 UTILITY INFRASTRUCTURE
 CONNECTION POINT PLAN FOR PROJECT DEED INCLUSION

DRAWN	JJL	DESIGNED	RR	REDUCTION
CHECKED	DF	PRINCIPAL		
APPROVED	PH			
SCALE	1:1000	DATE	FEB 2015	DRAWING No.
PROJ No.		FILE No.	WASP-AUR-CV-DWG-0007	DWG-0007 H



INSET 'A'
SCALE 1:250

PLAN
SCALE 1:1000

Part C – Post Contract Close State Obtained Authorisations

Post Contract Close State Obtained Authorisations

In relation to each of:

- Hammond Park Secondary School - Stage 1; and
- Hammond Park Secondary School - Stage 2.

the following:

- Development Approval;
- Local Structure Plan for that part of the Site that is a portion of Lot 32 on Diagram 32142;
- Amalgamation of sites to create a single lot for the Hammond Park Secondary School Stage 1 and Stage 2;
- Vegetation Clearing Permit, for the area generally designated in “Vegetation Clearance” in Drawing HAM-SD-SIT1-L-0001-2 VEGETATION CLEARANCE; and
- Determination on assessment under the *Environmental Protection and Biodiversity Conservation Act 1999* (Cth), for the area generally designated in “Vegetation Clearance” in Drawing HAM-SD-SIT1-L-0001-2 VEGETATION CLEARANCE,

to facilitate the development of a school and ancillary facilities at the Site.

In relation to each of:

- Ellenbrook North Secondary School - Stage 1; and
- Ellenbrook North Secondary School - Stage 2,

the following:

- Amalgamation of sites to create a single lot for the Ellenbrook North Secondary School Stage 1 and Stage 2;
- Vegetation Clearing Permit, for the area generally designated in “Vegetation Clearance” in Drawing ELB-SD-SIT-1-L-0001-2 VEGETATION CLEARANCE; and
- Determination on assessment under the *Environmental Protection and Biodiversity Conservation Act 1999* (Cth), for the area generally designated in “Vegetation Clearance” in Drawing ELB-SD-SIT-1-L-0001-2 VEGETATION CLEARANCE,

to facilitate the development of a school and ancillary facilities at the Site.

In relation to Landsdale East Primary School the following:

- Amalgamation of sites to create a single lot for Landsdale East Primary School;
- Vegetation Clearing Permit, for the area generally designated in “Vegetation Clearance” in Drawing LAN-SD-SIT-1-L-0001-3 VEGETATION CLEARANCE; and
- Determination on assessment under the *Environmental Protection and Biodiversity Conservation Act 1999* (Cth), for the area generally designated in “Vegetation Clearance” in Drawing LAN-SD-SIT-1-L-0001-3 VEGETATION CLEARANCE,

to facilitate the development of a school and ancillary facilities at the Site.

In relation to each of:

- Lakelands Secondary School – Stage 1; and
- Lakelands Secondary School – Stage 2,
amalgamation of sites to create a single lot for Lakelands Secondary School.

Part D – Utilities

Site	Service	Connection	Capacity
Alkimos	Water	1 x 50mm dia.	200 L/min @ 300kPa
	Fire Water	1 x 100mm dia.	600 L/min @ 250 kPa
	Sewer	1 x 150mm dia.	616 FU
	Gas	1 x 110mm dia.	1,873 MJ/hr @ 2.75 kPa
Lansdale	Water	1 x 50mm dia.	195 L/min @ 150kPa
	Fire Water	1 x 100mm dia.	600 L/min @ 250kPa
	Sewer	1 x 150mm dia.	578 FU
	Gas	1 x 110mm dia.	1,773 MJ/hr @ 2.75 kPa
Baldivis	Water	1 x 50mm dia.	195 L/min @ 300kPa
	Fire Water	1 x 100mm dia.	600 L/min @ 250kPa
	Sewer	1 x 150mm dia.	578 FU
	Gas	1 x 110mm dia.	1,773 MJ/hr @ 2.75 kPa
Byford	Water	1 x 50mm dia.	200 L/min @ 300kPa
	Fire Water	1 x 100mm dia.	600 L/min @ 250kPa
	Sewer	1 x 150mm dia.	616 FU
	Gas	1 x 110mm dia.	1,873 MJ/hr @ 2.75 kPa
Ellenbrook	Water	1 x 80mm dia.	414 L/min @ 300kPa
	Fire Water	1 x 150mm dia.	1,200 L/min @ 250kPa
	Sewer	2 x 150mm dia.	865 FU + 399 FU
	Gas	1 x 110mm dia.	10,278 MJ/hr @ 2.75 kPa
Lakelands	Water	1 x 80mm dia.	200 L/min @ 150kPa
	Fire Water	1 x 150mm dia.	1,200 L/min @ 210kPa
	Sewer	2 x 150mm dia.	577 FU + 701 FU
	Gas	1 x 110mm dia.	9,858 MJ/hr @ 2.75 kPa

Site	Service	Connection	Capacity
Hammond Park	Water	1 x 80mm dia.	200 L/min @ 150kPa
	Fire Water	1 x 150mm dia.	1,200 L/min @ 250kPa
	Sewer	2 x 150mm dia.	1340 FU
	Gas	1 x 110mm dia.	8,768 MJ/hr @ 2.75 kPa
Harrisdale	Water		380 L/min @ 300 kPa
	Fire Water		1,200 L/min @ 250 kPa
	Sewer		1340 FU
	Gas		7049 MJ/hr @2.75 kPa

Part E – Pre-agreed Modifications (Boreholes)

Site	Date required	Licence required
Alkimos	Six (6) months prior to the Date for Commercial Acceptance.	Water extraction licence
Lansdale	Six (6) months prior to the Date for Commercial Acceptance.	Water extraction licence
Baldivis	Six (6) months prior to the Date for Commercial Acceptance.	Water extraction licence
Byford	Six (6) months prior to the Date for Commercial Acceptance.	Water extraction licence
Ellenbrook	Six (6) months prior to the Date for Commercial Acceptance.	Water extraction licence
Lakelands	Six (6) months prior to the Date for Commercial Acceptance.	Water extraction licence
Hammond Park	Six (6) months prior to the Date for Commercial Acceptance.	Water extraction licence
Harrisdale	Delivered by Stage 1 Contractor	Not required