



## Wage Price Index, March 2019

### Key Facts

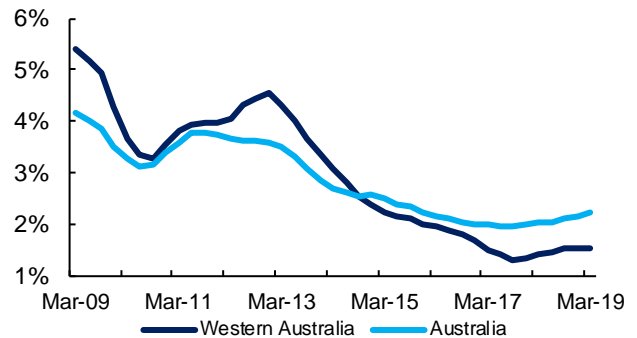
#### Western Australia

- Western Australia's Wage Price Index increased by 0.3% over the quarter and rose by 1.5% in annual average terms to March 2019.
- The State's Public Sector Wage Price Index increased by 0.3% over the quarter and rose by 1.4% in annual average terms to March 2019.
- This compares with the State's Private Sector Wage Price Index, which increased by 0.3% over the quarter and rose by 1.6% over the year.

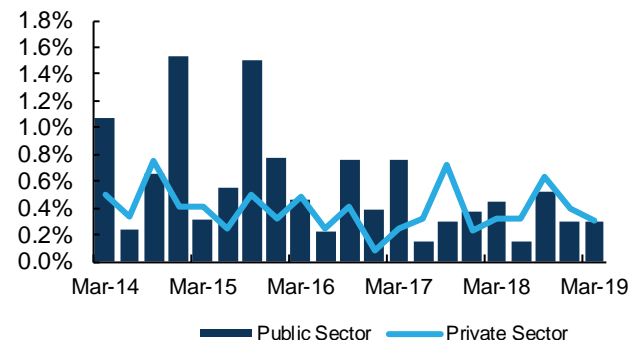
#### Australia

- Nationally, the Wage Price Index rose by 0.5% over the quarter and increased by 2.2% in annual average terms to March 2019.
- Over the year to March, the largest increase in Wage Price Index by State was 2.6% in Victoria. The smallest increase was 1.5% in Western Australia.
- Australia's Public Sector Wage Price Index increased by 0.4% over the quarter and rose by 2.4% in annual average terms to March 2019.
- Comparatively, Australia's Private Sector Wage Price Index increased by 0.4% over the quarter and rose by 2.2% during the year.

GROWTH IN WAGE PRICE INDEX  
Annual % Change



WAGE PRICE INDEX GROWTH BY SECTOR  
Western Australia, Quarterly % Change



WAGE PRICE GROWTH BY STATE  
March 2019

	Private Sector			Public Sector			Total		
	% Change Over:			% Change Over:			% Change Over:		
	Index	Year	Quarter	Index	Year	Quarter	Index	Year	Quarter
New South Wales	130.0	2.2%	0.4%	133.6	2.6%	0.5%	130.8	2.3%	0.4%
Victoria	131.5	2.4%	0.5%	135.2	3.2%	0.7%	132.3	2.6%	0.5%
Queensland	130.1	2.2%	0.4%	134.5	2.4%	0.1%	131.1	2.3%	0.4%
South Australia	131.3	2.2%	0.4%	132.6	2.3%	0.2%	131.6	2.2%	0.4%
Western Australia	<b>129.0</b>	<b>1.6%</b>	<b>0.3%</b>	<b>136.6</b>	<b>1.4%</b>	<b>0.3%</b>	<b>130.5</b>	<b>1.5%</b>	<b>0.3%</b>
Tasmania	132.7	2.8%	0.6%	130.0	1.9%	0.2%	131.9	2.5%	0.5%
Northern Territory	129.4	1.5%	0.5%	135.5	2.8%	0.4%	131.4	2.0%	0.5%
Australian Capital Territory	129.1	2.2%	0.5%	129.2	1.8%	0.5%	129.3	2.0%	0.5%
Australia	130.3	2.2%	0.4%	134.2	2.4%	0.4%	131.2	2.2%	0.5%



## Wage Price Index, June 2019

### Key Facts

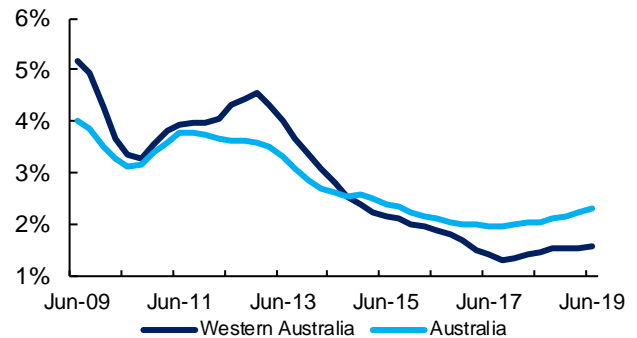
#### Western Australia

- Western Australia's Wage Price Index increased by 0.3% over the quarter and rose by 1.6% in annual average terms to June 2019.
- The State's Public Sector Wage Price Index increased by 0.2% over the quarter and rose by 1.4% in annual average terms to June 2019.
- This compares with the State's Private Sector Wage Price Index, which increased by 0.3% over the quarter and rose by 1.6% over the year.

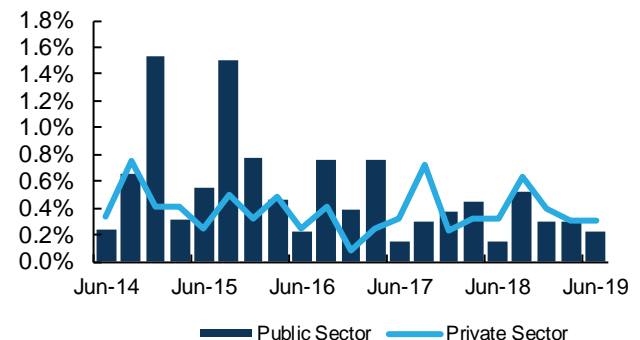
#### Australia

- Nationally, the Wage Price Index rose by 0.5% over the quarter and increased by 2.3% in annual average terms to June 2019.
- Over the year to June, the largest increase in Wage Price Index by State was 2.7% in Victoria. The smallest increase was 1.6% in Western Australia.
- Australia's Public Sector Wage Price Index increased by 0.6% over the quarter and rose by 2.5% in annual average terms to June 2019.
- Comparatively, Australia's Private Sector Wage Price Index increased by 0.4% over the quarter and rose by 2.3% during the year.

GROWTH IN WAGE PRICE INDEX  
Annual Average % Change



WAGE PRICE INDEX GROWTH BY SECTOR  
Western Australia, Quarterly % Change



WAGE PRICE GROWTH BY STATE  
June 2019

	Private Sector			Public Sector			Total		
	Index	% Change Over:		Index	% Change Over:		Index	% Change Over:	
		Year	Quarter		Year	Quarter		Year	Quarter
New South Wales	130.5	2.2%	0.4%	133.9	2.6%	0.2%	131.3	2.4%	0.4%
Victoria	132.2	2.5%	0.5%	137.2	3.3%	1.5%	133.2	2.7%	0.7%
Queensland	130.4	2.2%	0.2%	135.2	2.5%	0.5%	131.5	2.3%	0.3%
South Australia	131.6	2.2%	0.2%	132.9	2.1%	0.2%	131.9	2.2%	0.2%
Western Australia	<b>129.4</b>	<b>1.6%</b>	<b>0.3%</b>	<b>136.9</b>	<b>1.4%</b>	<b>0.2%</b>	<b>130.9</b>	<b>1.6%</b>	<b>0.3%</b>
Tasmania	133.2	3.0%	0.4%	130.1	1.5%	0.1%	132.2	2.5%	0.2%
Northern Territory	129.7	1.6%	0.2%	135.6	2.9%	0.1%	131.6	2.1%	0.2%
Australian Capital Territory	129.7	2.2%	0.5%	130.0	2.0%	0.6%	130.0	2.1%	0.5%
Australia	130.8	2.3%	0.4%	135.0	2.5%	0.6%	131.8	2.3%	0.5%



## Wage Price Index, September 2019

### Key Facts

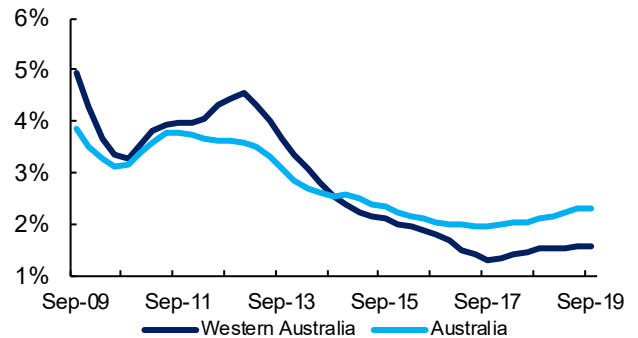
#### Western Australia

- Western Australia's Wage Price Index increased by 0.7% over the quarter and rose by 1.6% in annual average terms to September 2019.
- The State's Public Sector Wage Price Index increased by 0.3% over the quarter and rose by 1.3% in annual average terms to September 2019.
- This compares with the State's Private Sector Wage Price Index, which increased by 0.8% over the quarter and rose by 1.7% over the year.

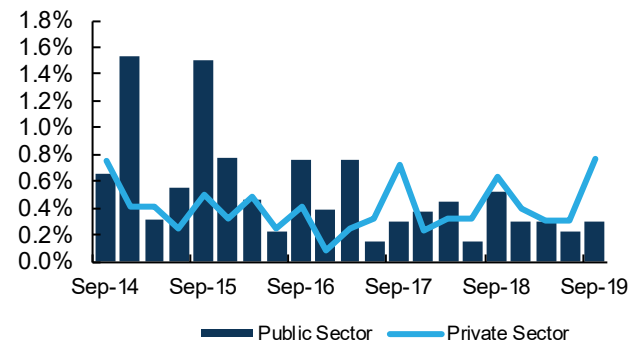
#### Australia

- Nationally, the Wage Price Index rose by 0.8% over the quarter and increased by 2.3% in annual average terms to September 2019.
- Over the year to September, the largest increase in Wage Price Index by State was 2.7% in Victoria. The smallest increase was 1.6% in Western Australia.
- Australia's Public Sector Wage Price Index increased by 0.7% over the quarter and rose by 2.5% in annual average terms to September 2019.
- Comparatively, Australia's Private Sector Wage Price Index increased by 0.9% over the quarter and rose by 2.2% during the year.

GROWTH IN WAGE PRICE INDEX  
Annual Average % Change



WAGE PRICE INDEX GROWTH BY SECTOR  
Western Australia, Quarterly % Change



WAGE PRICE GROWTH BY STATE  
September 2019

	Private Sector			Public Sector			Total		
	% Change Over:			% Change Over:			% Change Over:		
	Index	Year	Quarter	Index	Year	Quarter	Index	Year	Quarter
New South Wales	131.7	2.2%	0.9%	135.7	2.6%	1.3%	132.6	2.3%	1.0%
Victoria	133.2	2.6%	0.8%	138.2	3.4%	0.7%	134.2	2.7%	0.8%
Queensland	131.8	2.2%	1.1%	135.6	2.4%	0.3%	132.6	2.2%	0.8%
South Australia	133.5	2.4%	1.4%	133.2	1.9%	0.2%	133.3	2.2%	1.1%
Western Australia	<b>130.4</b>	<b>1.7%</b>	<b>0.8%</b>	<b>137.3</b>	<b>1.3%</b>	<b>0.3%</b>	<b>131.8</b>	<b>1.6%</b>	<b>0.7%</b>
Tasmania	135.1	3.0%	1.4%	131.3	1.3%	0.9%	133.9	2.4%	1.3%
Northern Territory	131.0	1.8%	1.0%	136.8	2.9%	0.9%	132.9	2.2%	1.0%
Australian Capital Territory	131.6	2.3%	1.5%	130.9	2.1%	0.7%	131.4	2.2%	1.1%
Australia	132.0	2.2%	0.9%	136.0	2.5%	0.7%	132.9	2.3%	0.8%



## Wage Price Index, December 2019

### Key Facts

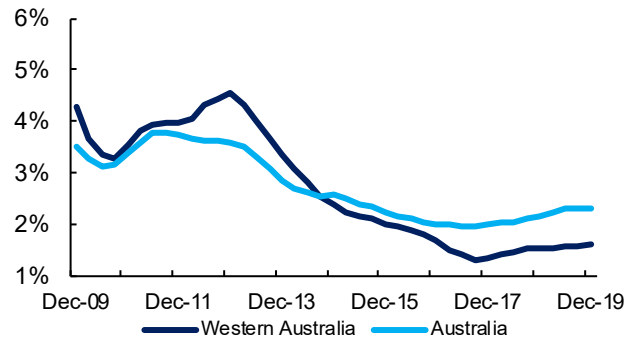
#### Western Australia

- Western Australia's Wage Price Index increased by 0.4% over the quarter and rose by 1.6% in annual average terms to December 2019.
- The State's Public Sector Wage Price Index increased by 0.4% over the quarter and rose by 1.2% in annual average terms to December 2019.
- This compares with the State's Private Sector Wage Price Index, which increased by 0.4% over the quarter and rose by 1.7% over the year.

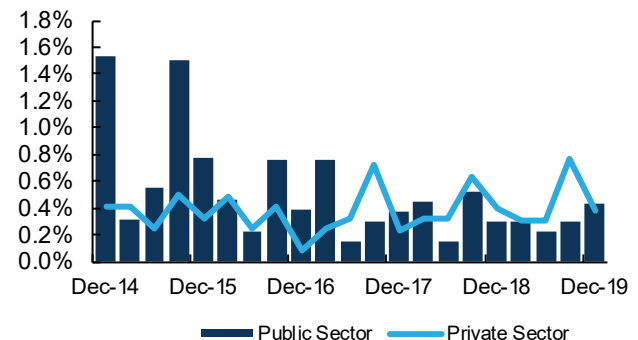
#### Australia

- Nationally, the Wage Price Index rose by 0.5% over the quarter and increased by 2.3% in annual average terms to December 2019.
- Over the year to December, the largest increase in Wage Price Index by State was 2.7% in Victoria. The smallest increase was 1.6% in Western Australia.
- Australia's Public Sector Wage Price Index increased by 0.4% over the quarter and rose by 2.5% in annual average terms to December 2019.
- Comparatively, Australia's Private Sector Wage Price Index increased by 0.5% over the quarter and rose by 2.2% during the year.

GROWTH IN WAGE PRICE INDEX  
Annual Average % Change



WAGE PRICE INDEX GROWTH BY SECTOR  
Western Australia, Quarterly % Change



WAGE PRICE GROWTH BY STATE  
December 2019

	Private Sector			Public Sector			Total		
	Index	% Change Over:		Index	% Change Over:		Index	% Change Over:	
		Year	Quarter		Year	Quarter		Year	Quarter
New South Wales	132.2	2.2%	0.4%	136.1	2.5%	0.3%	133.1	2.2%	0.4%
Victoria	134.1	2.5%	0.7%	139.0	3.5%	0.6%	135.1	2.7%	0.7%
Queensland	132.2	2.1%	0.3%	135.9	2.1%	0.2%	133.0	2.1%	0.3%
South Australia	134.0	2.4%	0.4%	134.5	1.7%	1.0%	134.1	2.2%	0.6%
Western Australia	<b>130.9</b>	<b>1.7%</b>	<b>0.4%</b>	<b>137.9</b>	<b>1.2%</b>	<b>0.4%</b>	<b>132.3</b>	<b>1.6%</b>	<b>0.4%</b>
Tasmania	135.5	2.9%	0.3%	132.5	1.4%	0.9%	134.6	2.4%	0.5%
Northern Territory	131.6	2.0%	0.5%	138.9	2.8%	1.5%	134.1	2.3%	0.9%
Australian Capital Territory	132.0	2.4%	0.3%	131.1	2.1%	0.2%	131.6	2.3%	0.2%
Australia	132.6	2.2%	0.5%	136.6	2.5%	0.4%	133.5	2.3%	0.5%