



# Quarterly performance report

1 April 2013 to 30 June 2013

As part of the changes to machinery of government, the Department of Environment and Conservation (DEC) was divided on 1 July 2013 into two agencies: the Department of Environment Regulation (DER) and the Department of Parks and Wildlife (DPaW).

This report relates to activities under the former DEC for the period 1 April 2013 to 30 June 2013. Quarterly reporting from 1 July 2013 will relate to the Department of Environment Regulation.

**Land Use Planning**

July 2013

Department of Environment Regulation

168 St Georges Terrace

Perth WA 6000

Phone: +61-8-6467 5000

Fax: +61-8-6467 5562

[www.der.wa.gov.au](http://www.der.wa.gov.au)

© State of Western Australia 2013

July 2013

All material is the copyright of the Department Environment Regulation. No part of the contents of the publication may be reproduced without consent of this agency.

Questions regarding this report should be directed to:

Sean Walsh

Land Planning Program

Department of Parks and Wildlife

Locked Bag 104

Bentley Delivery Centre 6102

Phone: +61-8-9423-2983

Email: [sean.walsh@dpaw.wa.gov.au](mailto:sean.walsh@dpaw.wa.gov.au)

# Contents

Purpose of report .....	4
Environmental planning advice .....	4
Timeframes .....	4
Planning proposals received .....	5
Subdivision applications .....	6
Condition clearance requests.....	8

## Figures

Figure 1. Subdivision applications received from WAPC (South West and Swan regions) July 2012 to June 2013 .....	6
Figure 2. Average response time for subdivision applications (South West and Swan regions), July 2012 to June 2013 .....	7
Figure 3. Clearance requests received (South West and Swan regions), July 2012 to June 2013 .....	8
Figure 4. Average response time for clearance requests (South West and Swan regions), July 2012 to June 2013 .....	9
Figure 5. Clearance requests grouped by response time (South West and Swan regions), July 2012 to June 2013 .....	10

## Tables

Table 1. Planning proposals received by the South West and Swan regions, 1 April to 30 June 2013 .....	5
--	---

## Purpose of report

This report, prepared by the Land Planning Program, provides statistics on responses to requests for environmental advice on planning and development applications received by the South West and Swan regions of the former Department of Environment and Conservation (DEC). These regions received approximately 80 per cent of all planning referrals to DEC.

On 1 July 2013, DEC was separated into two agencies: the Department of Environment Regulation (DER) and Department of Parks and Wildlife (DPaW). Land use planning advice is now coordinated separately by each agency relative to their roles and responsibilities. DER now responds to land use planning matters relating to the *Environmental Protection Act 1986* and the *Contaminated Sites Act 2003* and DPaW responds to land use planning matters relating to the *Conservation and Land Management Act 1984* and the *Wildlife Conservation Act 1959*. From 1 July 2013, data for regions under Department of Environment Regulation (DER) will be included in future quarterly reports published by DER.

## Environmental planning advice

Western Australia's land use planning system coordinates planning, land use and development through the review, approval and monitoring of planning schemes, policies, strategies, structure plans and subdivision and development applications. Land use planning policy and decision-making are largely the responsibility of the Western Australian Planning Commission (WAPC), Department of Planning, local governments and redevelopment authorities.

DEC had an important role in advising land use planning decision-makers on environmental planning issues relating to nature conservation, DEC-managed areas, site contamination and pollution management. Requests for advice are mainly received from WAPC, followed by local government authorities and other government agencies. Advice was coordinated by staff in DEC regions. Further information on DER's role in land use planning can be found at [www.der.wa.gov.au](http://www.der.wa.gov.au).

## Timeframes

The timeframe for planning advice commences from the date a planning proposal is received and ends on the date that written advice is provided by the department. Advice may consist of: technical information, the significance of impacts on the environment, recommendations for changes to a plan or report, conditions to be placed on the proposal, advice that a proposal is unacceptable in its current form, or advice that there are no specific issues requiring DEC advice.

The timeframe for a response is defined by the planning authority that refers the proposal, and this varies depending on the type of proposal. The DEC target timeframe was generally to respond within the specified timeframe.

## Planning proposals received

Table 1 below shows the approximate number of planning proposals received by DEC for the South West and Swan regions and the main categories of referral.

**Table 1. Planning proposals received by the South West and Swan regions, 1 April to 30 June 2013**

Region	Development application	Planning scheme/ amendment	Structure plan/ planning strategy	Subdivision	Utilities, infrastructure and roads	Total
South West	34	11	10	60	3	118
Swan	74	29	14	147	4	227
TOTAL	108	40	24	207	7	386

Note: a number of other types of referrals that are received by DEC are not included in the table above.

## Subdivision applications

Subdivision applications from WAPC represent the most common type of planning proposal sent to DEC. These applications have a statutory 42 day requirement for a response by referral agencies such as DEC. Figure 1 summarises the combined monthly total of subdivision referrals received by South West and Swan regions during the previous 12 months.

**Figure 1. Subdivision applications received from WAPC (South West and Swan regions), July 2012 to June 2013**

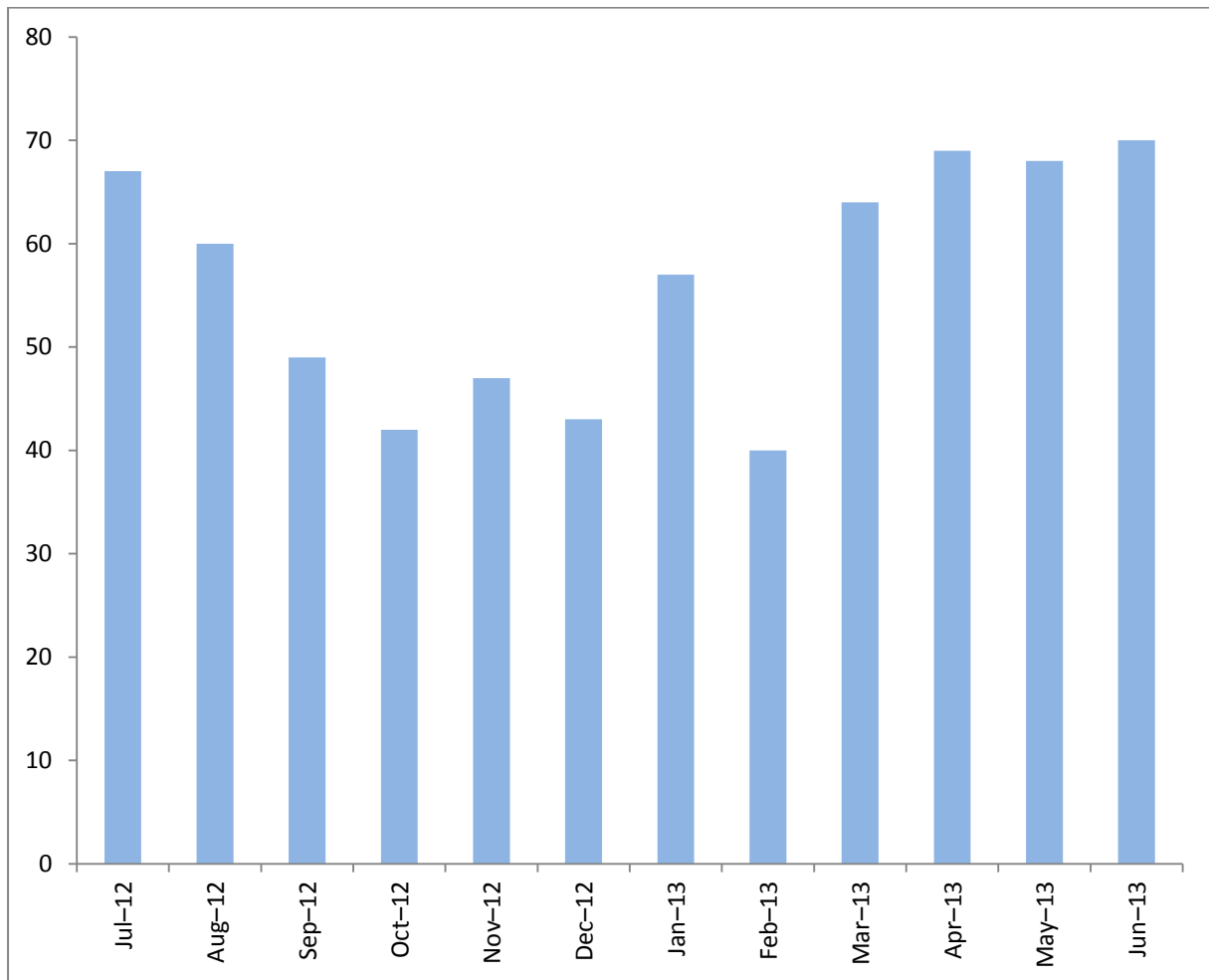


Figure 2 summarises the average number of days taken to respond to subdivision referrals received by the South West and Swan regions during the previous 12 months.

**Figure 2. Average response time for subdivision applications (South West and Swan regions), July 2012 to June 2013**



## Condition clearance requests

Where approval to subdivide is granted by WAPC, conditions may be applied. Conditions are allotted a clearing authority (such as DEC) to assess whether conditions have been fulfilled and to provide clearance of each. Typical conditions requiring clearance by DEC include the preparation and implementation of management plans for environmentally sensitive areas.

Figure 3 summarises the combined monthly total of clearance requests received by DEC for the South West and Swan regions during the previous 12 months. A single clearance request may apply to multiple conditions.

**Figure 3. Clearance requests received (South West and Swan regions), July 2012 to June 2013**

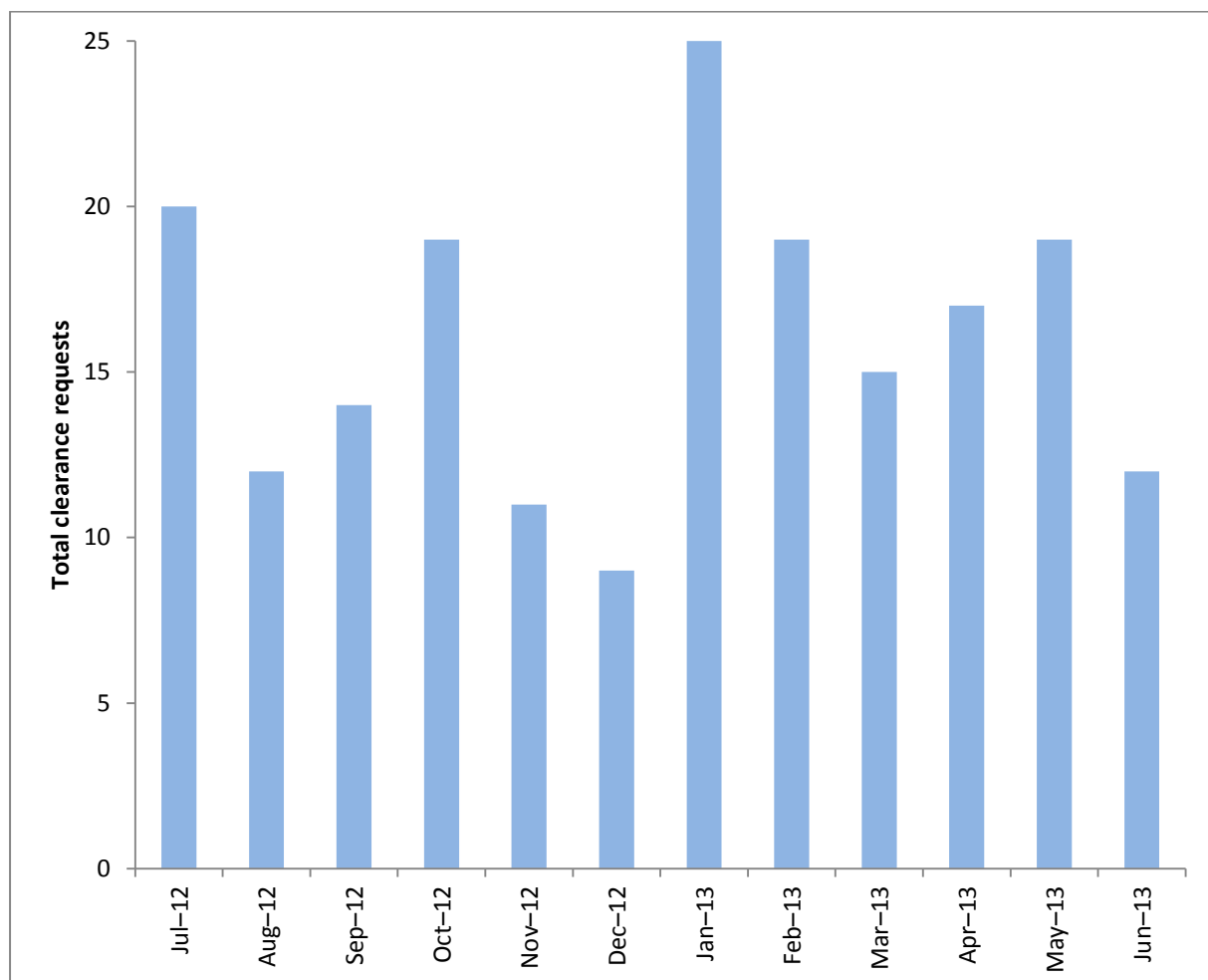




Figure 4 summarise the approximate number of days taken to process clearance requests during the previous 12-month period. Assessment time includes time taken by applicants to provide additional information if required by DEC before a clearance can be issued.

**Figure 4. Average response time for clearance requests (South West and Swan regions), July 2012 to June 2013**

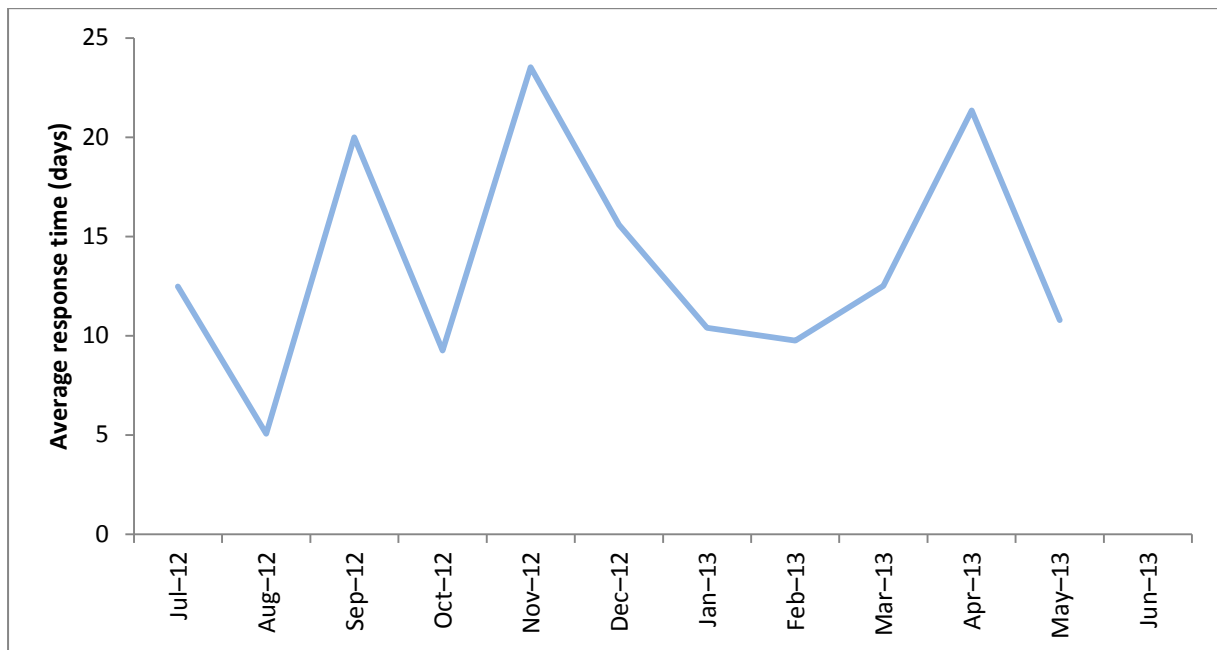


Figure 5. Clearance requests grouped by response time (South West and Swan regions), July 2012 to June 2013

