



# Western Australian Economic Notes

## Wage Price Index, September 2020

### Key Facts

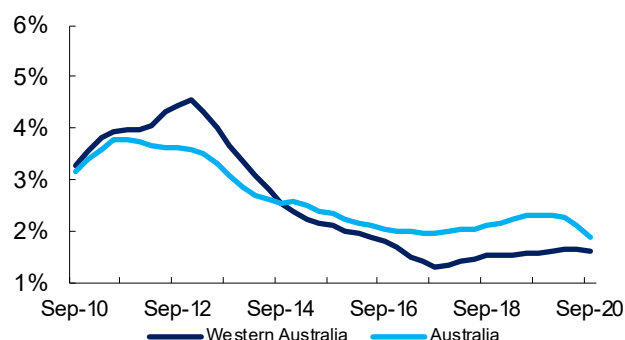
#### Western Australia

- Western Australia's Wage Price Index increased by 0.5% over the quarter and rose by 1.6% in annual average terms to September 2020.
- The State's Public Sector Wage Price Index increased by 0.4% over the quarter and rose by 1.2% in annual average terms to September 2020.
- This compares with the State's Private Sector Wage Price Index, which increased by 0.5% over the quarter and rose by 1.7% over the year.

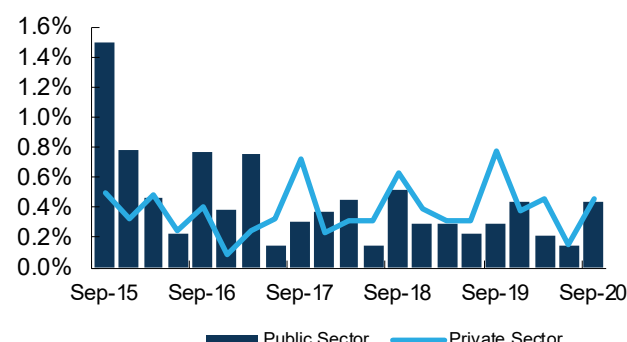
#### Australia

- Nationally, the Wage Price Index rose by 0.4% over the quarter and increased by 1.9% in annual average terms to September 2020.
- Over the year to September, the largest increase in Wage Price Index by State was 2.2% in Tasmania. The smallest increase was 1.6% in Western Australia.
- Australia's Public Sector Wage Price Index increased by 0.4% over the quarter and rose by 2.1% in annual average terms to September 2020.
- Comparatively, Australia's Private Sector Wage Price Index increased by 0.5% over the quarter and rose by 1.8% during the year.

GROWTH IN WAGE PRICE INDEX  
Annual Average % Change



WAGE PRICE INDEX GROWTH BY SECTOR  
Western Australia, Quarterly % Change



WAGE PRICE GROWTH BY STATE  
September 2020

	Private Sector			Public Sector			Total		
	Index	% Change Over:		Index	% Change Over:		Index	% Change Over:	
		Year	Quarter		Year	Quarter		Year	Quarter
New South Wales	133.5	1.8%	0.6%	137.5	2.1%	0.4%	134.4	1.8%	0.6%
Victoria	134.5	1.8%	0.1%	140.7	2.7%	0.2%	135.8	2.0%	0.2%
Queensland	133.3	1.7%	0.6%	138.9	2.0%	0.6%	134.6	1.8%	0.6%
South Australia	135.5	2.3%	0.4%	136.5	2.0%	0.5%	135.7	2.2%	0.4%
Western Australia	<b>132.3</b>	<b>1.7%</b>	<b>0.5%</b>	<b>139.0</b>	<b>1.2%</b>	<b>0.4%</b>	<b>133.7</b>	<b>1.6%</b>	<b>0.5%</b>
Tasmania	136.7	2.1%	0.5%	134.9	2.5%	0.5%	136.1	2.2%	0.5%
Northern Territory	132.9	2.0%	0.4%	139.7	2.5%	0.5%	135.2	2.2%	0.4%
Australian Capital Territory	133.6	2.3%	0.7%	132.7	1.8%	0.3%	133.3	2.0%	0.5%
Australia	133.7	1.8%	0.5%	138.4	2.1%	0.4%	134.7	1.9%	0.4%