



Government of **Western Australia**  
Department of **Communities**



**Child Protection Activity  
Performance Information**

**2018–19**

# Contents

The year at a glance.....	1	Children and young people by length of time in care, by district.....	21
Family support network clients .....	2	Children and young people by length of time in care .....	22
Intensive Family Support Cases, Intensive Family Support Services and Aboriginal In-home Support Services, by district.....	3	Number of foster carers approved.....	22
Child protection notifications .....	4	Children and young people in care at 30 June 2019 by living arrangement .....	23
Action taken as a result of safety and wellbeing assessments .....	5	Age of children entering care during the year .....	24
Outcome of assessed concerns.....	6	Children and young people in care with complex needs during the year .....	24
Outcomes of safety and wellbeing assessments, by district .....	7	Age of children and young people upon leaving care, by district.....	25
Protection Applications lodged and Orders Granted, by district ..	16	Children and young people who left care by length of time in care, by district.....	26
Mandatory reporting .....	17	Adoption orders granted by the Family Court or country of origin, by type of adoption.....	27
Crisis Care contacts.....	18	Post-adoption information services .....	27
Children and young people in care at 30 June 2019, by district.....	18		
Age of children in care at 30 June 2019 .....	19		
Age of children and young people in care at 30 June 2019, by district.....	20		

# The year at a glance



Children and young people needing protection are safe from abuse and harm.



**69,219**  
Contacts to the Department



**20,889**  
Child protection notifications



**14,454**  
Safety and wellbeing assessments



**1,158**  
Protection orders granted



**47,623**  
Family and domestic violence incidents with and without children



**3,199**  
Mandatory reports



Children and young people in the Chief Executive Officer's care receive a high quality of care and have much improved life chances.



**5,379**  
Children in care



**259**  
Children with complex needs



**3,230**  
Foster carer households



**4,386**  
Children in foster/family care

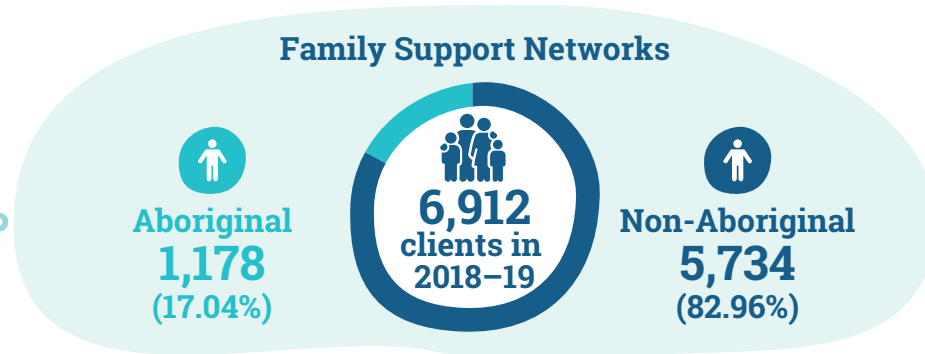


**403**  
Children in residential care



**1,938**  
Viewpoint surveys completed by children in care

# Family support network clients



Family Support Network	Number of cases	Number of clients	Aboriginal clients
Armadale	533	1,663	240
Fremantle	612	1,658	320
Mid-West	32	86	44
Mirrabooka	651	2,121	320
Perth	466	1,505	287
<b>Total</b>	<b>2,294</b>	<b>7,033*</b>	<b>1,211*</b>

\* The client count in this table is higher than the same in the Aboriginality table. This discrepancy is due to clients being recorded in multiple districts.

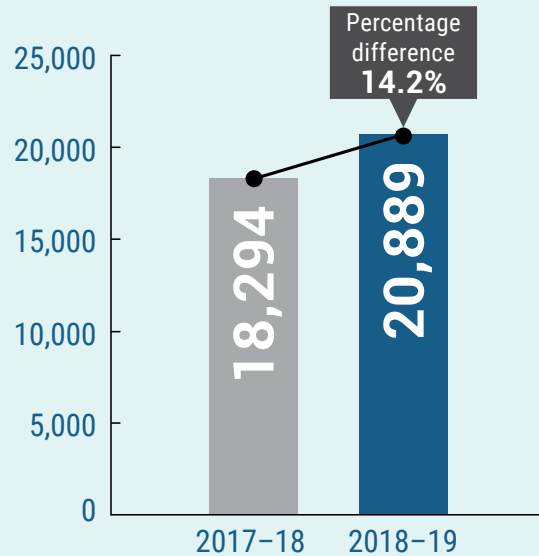
# Intensive Family Support Cases, Intensive Family Support Services and Aboriginal In-home Support Services, by district

District	Intensive Family Support Cases	Intensive Family Support Services referrals	Aboriginal In-home Support Services* referrals
Armadale	419	43	23
Cannington	368	41	26
Crisis Care	2	0	17
East Kimberley	133	21	0
Fremantle	311	36	14
Goldfields	170	14	0
Great Southern	117	9	0
Joondalup	234	25	15
Midland	275	32	30
Mid-West	226	33	0
Mirrabooka	270	31	26
Peel	89	33	3
Perth	178	28	27
Pilbara	366	7	0
Rockingham	284	21	24
South West	187	17	0
West Kimberley	230	11	0
Wheatbelt	136	13	0
<b>Total</b>	<b>3,995</b>	<b>415</b>	<b>205</b>

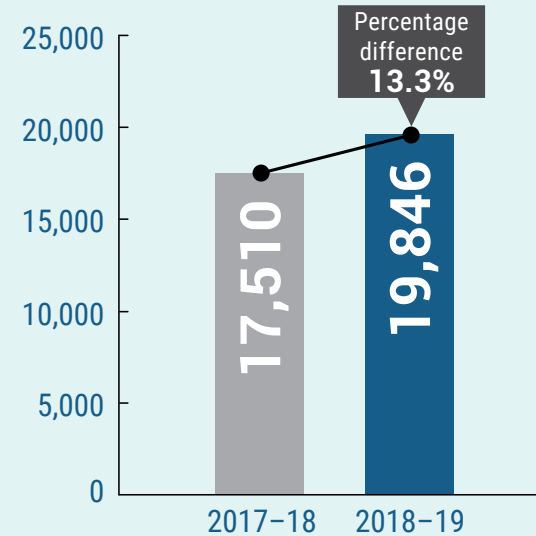
\* The Aboriginal In-home Support Service is a metropolitan service only.

# Child protection notifications

## Child protection notifications



## Number of children in child protection cases



# Action taken as a result of safety and wellbeing assessments

Outcome of Safety and Wellbeing Assessment	Substantiated		Not substantiated		Other concerns assessed		Unable to complete assessment		In process		Total
	Aboriginal	Non-Aboriginal	Aboriginal	Non-Aboriginal	Aboriginal	Non-Aboriginal	Aboriginal	Non-Aboriginal	Aboriginal	Non-Aboriginal	
Intervention action	341	430	0	0	0	0	0	0	0	0	771
Commence Family Support (s.21)	85	104	75	105	4	2	0	0	0	0	375
Safety issues addressed – No further action	693	1,023	1,496	3,113	42	47	0	0	0	0	6,414
Action not possible	46	41	0	0	0	0	362	458	0	0	907
In process	0	1	0	0	0	0	0	0	1,299	2,427	3,727
Commence Intensive Family Support (s.32)	856	862	100	115	16	10	0	0	0	0	1,959
Referral to external program	15	83	51	143	0	9	0	0	0	0	301
<b>Total</b>	<b>2,036</b>	<b>2,544</b>	<b>1,722</b>	<b>3,476</b>	<b>62</b>	<b>68</b>	<b>362</b>	<b>458</b>	<b>1,299</b>	<b>2,427</b>	<b>14,454</b>



# Outcome of assessed concerns

Outcome of assessed concerns	Neglect		Emotional abuse - FDV		Emotional abuse - other		Physical abuse		Sexual abuse		Wellbeing concerns		Total
	Aboriginal	Non-Aboriginal	Aboriginal	Non-Aboriginal	Aboriginal	Non-Aboriginal	Aboriginal	Non-Aboriginal	Aboriginal	Non-Aboriginal	Aboriginal	Non-Aboriginal	
Substantiated	307	324	299	359	95	196	121	224	76	150	0	0	2,151
Substantiated likelihood harm	580	685	1,012	841	152	387	381	439	87	192	0	0	4,756
Not substantiated	888	1,548	755	1,150	366	1,051	786	1,880	510	1,069	0	0	10,003
No concern	0	0	0	0	0	0	0	0	0	0	161	273	434
Concern	0	0	0	0	0	0	0	0	0	0	210	184	394
In process	507	881	535	954	150	456	303	756	152	394	73	120	5,281
Unable to complete <sup>(a)</sup>	154	175	205	187	90	127	127	173	83	144	46	63	1,574
<b>Total</b>	<b>2,436</b>	<b>3,613</b>	<b>2,806</b>	<b>3,491</b>	<b>853</b>	<b>2,217</b>	<b>1,718</b>	<b>3,472</b>	<b>908</b>	<b>1,949</b>	<b>490</b>	<b>640</b>	<b>24,593</b>

A safety and wellbeing assessment may identify more than one concern and the Department assesses each of these concerns individually.

(a) Refers to circumstances such as a young person's refusal to engage with the Department's worker; or when a subject child or family has relocated during an assessment and their whereabouts are unknown.



# Outcomes of safety and wellbeing assessments, by district

District	Intervention action		Intensive Family Support		Family Support		Referral to external program		Safety issues addressed		Action not possible		In process		Total	
	Aboriginal	Non-Aboriginal	Aboriginal	Non-Aboriginal	Aboriginal	Non-Aboriginal	Aboriginal	Non-Aboriginal	Aboriginal	Non-Aboriginal	Aboriginal	Non-Aboriginal	Aboriginal	Non-Aboriginal		
<b>Armadale</b>																
Substantiated	39	47	65	128	4	6	9	28	28	188	3	10	0	0	555	
Not substantiated	0	0	3	11	9	5	7	28	139	400	0	0	0	0	602	
Other concerns assessed	0	0	0	5	0	0	0	0	6	3	0	0	0	0	14	
Unable to complete	0	0	0	0	0	0	0	0	0	0	19	27	0	0	46	
In process	0	0	0	0	0	0	0	0	0	0	0	0	76	256	332	
<b>Total</b>	<b>39</b>	<b>47</b>	<b>68</b>	<b>144</b>	<b>13</b>	<b>11</b>	<b>16</b>	<b>56</b>	<b>173</b>	<b>591</b>	<b>22</b>	<b>37</b>	<b>76</b>	<b>256</b>	<b>1,549</b>	
<b>Cannington</b>																
Substantiated	22	38	52	75	5	0	2	10	49	88	1	6	0	0	348	
Not substantiated	0	0	10	40	0	3	4	17	114	247	0	0	0	0	435	
Other concerns assessed	0	0	1	1	0	0	0	0	1	2	0	0	0	0	5	
Unable to complete	0	0	0	0	0	0	0	0	0	0	27	41	0	0	68	
In process	0	0	0	0	0	0	0	0	0	0	0	0	46	116	162	
<b>Total</b>	<b>22</b>	<b>38</b>	<b>63</b>	<b>116</b>	<b>5</b>	<b>3</b>	<b>6</b>	<b>27</b>	<b>164</b>	<b>337</b>	<b>28</b>	<b>47</b>	<b>46</b>	<b>116</b>	<b>1,018</b>	

District	Intervention action		Intensive Family Support		Family Support		Referral to external program		Safety issues addressed		Action not possible		In process		Total
	Aboriginal	Non-Aboriginal	Aboriginal	Non-Aboriginal	Aboriginal	Non-Aboriginal	Aboriginal	Non-Aboriginal	Aboriginal	Non-Aboriginal	Aboriginal	Non-Aboriginal	Aboriginal	Non-Aboriginal	
<b>East Kimberley</b>															
Substantiated	17	0	53	0	1	1	0	0	56	0	6	0	0	0	134
Not substantiated	0	0	4	0	2	0	0	0	79	3	0	0	0	0	88
Other concerns assessed	0	0	0	0	0	0	0	0	4	0	0	0	0	0	4
Unable to complete	0	0	0	0	0	0	0	0	0	0	6	1	0	0	7
In process	0	0	0	0	0	0	0	0	0	0	0	0	89	19	108
<b>Total</b>	<b>17</b>	<b>0</b>	<b>57</b>	<b>0</b>	<b>3</b>	<b>1</b>	<b>0</b>	<b>0</b>	<b>139</b>	<b>3</b>	<b>12</b>	<b>1</b>	<b>89</b>	<b>19</b>	<b>341</b>
<b>Fremantle</b>															
Substantiated	21	32	63	80	31	18	0	5	27	55	4	0	0	0	336
Not substantiated	0	0	7	6	20	22	9	3	100	247	0	0	0	0	414
Other concerns assessed	0	0	0	0	0	1	0	0	1	4	0	0	0	0	6
Unable to complete	0	0	0	0	0	0	0	0	0	0	15	36	0	0	51
In process	0	0	0	0	0	0	0	0	0	0	0	0	45	77	122
<b>Total</b>	<b>21</b>	<b>32</b>	<b>70</b>	<b>86</b>	<b>51</b>	<b>41</b>	<b>9</b>	<b>8</b>	<b>128</b>	<b>306</b>	<b>19</b>	<b>36</b>	<b>45</b>	<b>77</b>	<b>929</b>

District	Intervention action		Intensive Family Support		Family Support		Referral to external program		Safety issues addressed		Action not possible		In process		Total
	Aboriginal	Non-Aboriginal	Aboriginal	Non-Aboriginal	Aboriginal	Non-Aboriginal	Aboriginal	Non-Aboriginal	Aboriginal	Non-Aboriginal	Aboriginal	Non-Aboriginal	Aboriginal	Non-Aboriginal	

### Goldfields

Substantiated	17	11	42	15	8	5	0	0	25	28	6	1	0	0	158
Not substantiated	0	0	10	7	8	2	0	0	95	84	0	0	0	0	206
Other concerns assessed	0	0	3	0	1	0	0	0	9	2	0	0	0	0	15
Unable to complete	0	0	0	0	0	0	0	0	0	0	26	11	0	0	37
In process	0	0	0	0	0	0	0	0	0	0	0	0	90	37	127
<b>Total</b>	<b>17</b>	<b>11</b>	<b>55</b>	<b>22</b>	<b>17</b>	<b>7</b>	<b>0</b>	<b>0</b>	<b>129</b>	<b>114</b>	<b>32</b>	<b>12</b>	<b>90</b>	<b>37</b>	<b>543</b>

### Great Southern

Substantiated	16	15	27	35	0	6	0	0	28	41	4	4	0	0	176
Not substantiated	0	0	3	5	3	14	0	0	107	174	0	0	0	0	306
Other concerns assessed	0	0	0	1	0	0	0	0	0	1	0	0	0	0	2
Unable to complete	0	0	0	0	0	0	0	0	0	0	17	14	0	0	31
In process	0	0	0	0	0	0	0	0	0	0	0	0	31	78	109
<b>Total</b>	<b>16</b>	<b>15</b>	<b>30</b>	<b>41</b>	<b>3</b>	<b>20</b>	<b>0</b>	<b>0</b>	<b>135</b>	<b>216</b>	<b>21</b>	<b>18</b>	<b>31</b>	<b>78</b>	<b>624</b>

District	Intervention action		Intensive Family Support		Family Support		Referral to external program		Safety issues addressed		Action not possible		In process		Total
	Aboriginal	Non-Aboriginal	Aboriginal	Non-Aboriginal	Aboriginal	Non-Aboriginal	Aboriginal	Non-Aboriginal	Aboriginal	Non-Aboriginal	Aboriginal	Non-Aboriginal	Aboriginal	Non-Aboriginal	
<b>Joondalup</b>															
Substantiated	4	29	25	77	1	19	0	9	20	66	3	1	0	0	254
Not substantiated	0	0	2	6	5	19	6	20	36	284	0	0	0	0	378
Other concerns assessed	0	0	0	1	0	0	0	0	0	4	0	0	0	0	5
Unable to complete	0	0	0	0	0	0	0	0	0	0	11	38	0	0	49
In process	0	0	0	0	0	0	0	0	0	0	0	0	62	331	393
<b>Total</b>	<b>4</b>	<b>29</b>	<b>27</b>	<b>84</b>	<b>6</b>	<b>38</b>	<b>6</b>	<b>29</b>	<b>56</b>	<b>354</b>	<b>14</b>	<b>39</b>	<b>62</b>	<b>331</b>	<b>1,079</b>
<b>Midland</b>															
Substantiated	18	46	58	42	0	7	0	12	64	101	3	3	0	0	354
Not substantiated	0	0	10	3	0	1	0	5	70	191	0	0	0	0	280
Other concerns assessed	0	0	1	0	0	0	0	1	1	3	0	0	0	0	6
Unable to complete	0	0	0	0	0	0	0	0	0	0	23	35	0	0	58
In process	0	0	0	0	0	0	0	0	0	0	0	0	193	452	645
<b>Total</b>	<b>18</b>	<b>46</b>	<b>69</b>	<b>45</b>	<b>0</b>	<b>8</b>	<b>0</b>	<b>18</b>	<b>135</b>	<b>295</b>	<b>26</b>	<b>38</b>	<b>193</b>	<b>452</b>	<b>1,343</b>

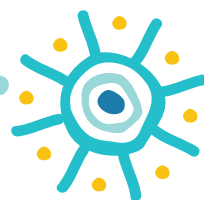
District	Intervention action		Intensive Family Support		Family Support		Referral to external program		Safety issues addressed		Action not possible		In process		Total
	Aboriginal	Non-Aboriginal	Aboriginal	Non-Aboriginal	Aboriginal	Non-Aboriginal	Aboriginal	Non-Aboriginal	Aboriginal	Non-Aboriginal	Aboriginal	Non-Aboriginal	Aboriginal	Non-Aboriginal	
<b>Mid-West</b>															
Substantiated	15	9	91	35	3	0	0	0	67	36	4	1	0	0	261
Not substantiated	0	0	11	1	1	0	1	0	189	60	0	0	0	0	263
Other concerns assessed	0	0	3	0	0	0	0	0	5	0	0	0	0	0	8
Unable to complete	0	0	0	0	0	0	0	0	0	0	19	13	0	0	32
In process	0	0	0	0	0	0	0	0	0	0	0	0	48	45	93
<b>Total</b>	<b>15</b>	<b>9</b>	<b>105</b>	<b>36</b>	<b>4</b>	<b>0</b>	<b>1</b>	<b>0</b>	<b>261</b>	<b>96</b>	<b>23</b>	<b>14</b>	<b>48</b>	<b>45</b>	<b>657</b>
<b>Mirrabooka</b>															
Substantiated	17	25	39	75	5	6	2	6	32	82	1	1	0	0	291
Not substantiated	0	0	5	10	0	3	7	18	73	258	0	0	0	0	374
Other concerns assessed	0	0	1	0	0	0	0	0	2	2	0	0	0	0	5
Unable to complete	0	0	0	0	0	0	0	0	0	0	36	28	0	0	64
In process	0	0	0	0	0	0	0	0	0	0	0	0	35	79	114
<b>Total</b>	<b>17</b>	<b>25</b>	<b>45</b>	<b>85</b>	<b>5</b>	<b>9</b>	<b>9</b>	<b>24</b>	<b>107</b>	<b>342</b>	<b>37</b>	<b>29</b>	<b>35</b>	<b>79</b>	<b>848</b>

District	Intervention action		Intensive Family Support		Family Support		Referral to external program		Safety issues addressed		Action not possible		In process		Total
	Aboriginal	Non-Aboriginal	Aboriginal	Non-Aboriginal	Aboriginal	Non-Aboriginal	Aboriginal	Non-Aboriginal	Aboriginal	Non-Aboriginal	Aboriginal	Non-Aboriginal	Aboriginal	Non-Aboriginal	
<b>Peel</b>															
Substantiated	12	35	8	40	0	8	0	0	31	114	0	1	0	0	249
Not substantiated	0	0	0	1	0	13	0	0	34	145	0	0	0	0	193
Other concerns assessed	0	0	0	1	0	0	0	0	1	6	0	0	0	0	8
Unable to complete	0	0	0	0	0	0	0	0	0	0	11	63	0	0	74
In process	0	0	0	0	0	0	0	0	0	0	0	0	47	201	248
<b>Total</b>	<b>12</b>	<b>35</b>	<b>8</b>	<b>42</b>	<b>0</b>	<b>21</b>	<b>0</b>	<b>0</b>	<b>66</b>	<b>265</b>	<b>11</b>	<b>64</b>	<b>47</b>	<b>201</b>	<b>772</b>
<b>Perth</b>															
Substantiated	23	21	46	59	2	0	1	3	23	29	0	4	0	0	211
Not substantiated	0	0	1	11	8	6	10	15	40	188	0	0	0	0	279
Other concerns assessed	0	0	0	1	0	0	0	0	2	1	0	0	0	0	4
Unable to complete	0	0	0	0	0	0	0	0	0	0	4	11	0	0	15
In process	0	0	0	0	0	0	0	0	0	0	0	0	69	131	200
<b>Total</b>	<b>23</b>	<b>21</b>	<b>47</b>	<b>71</b>	<b>10</b>	<b>6</b>	<b>11</b>	<b>18</b>	<b>65</b>	<b>218</b>	<b>4</b>	<b>15</b>	<b>69</b>	<b>131</b>	<b>709</b>

District	Intervention action		Intensive Family Support		Family Support		Referral to external program		Safety issues addressed		Action not possible		In process		Total
	Aboriginal	Non-Aboriginal	Aboriginal	Non-Aboriginal	Aboriginal	Non-Aboriginal	Aboriginal	Non-Aboriginal	Aboriginal	Non-Aboriginal	Aboriginal	Non-Aboriginal	Aboriginal	Non-Aboriginal	
<b>Pilbara</b>															
Substantiated	27	4	118	15	20	0	0	0	105	14	10	1	0	0	314
Not substantiated	0	0	18	1	13	2	0	0	176	55	0	0	0	0	265
Other concerns assessed	0	0	5	0	2	0	0	0	5	5	0	0	0	0	17
Unable to complete	0	0	0	0	0	0	0	0	0	0	82	25	0	0	107
In process	0	0	0	0	0	0	0	0	0	0	0	0	154	56	210
<b>Total</b>	<b>27</b>	<b>4</b>	<b>141</b>	<b>16</b>	<b>35</b>	<b>2</b>	<b>0</b>	<b>0</b>	<b>286</b>	<b>74</b>	<b>92</b>	<b>26</b>	<b>154</b>	<b>56</b>	<b>913</b>
<b>Rockingham</b>															
Substantiated	18	44	34	98	4	23	0	10	12	76	0	1	0	1	321
Not substantiated	0	0	1	12	3	9	3	37	84	549	0	0	0	0	698
Other concerns assessed	0	0	0	0	1	0	0	8	2	4	0	0	0	0	15
Unable to complete	0	0	0	0	0	0	0	0	0	0	16	55	0	0	71
In process	0	0	0	0	0	0	0	0	0	0	0	0	52	163	215
<b>Total</b>	<b>18</b>	<b>44</b>	<b>35</b>	<b>110</b>	<b>8</b>	<b>32</b>	<b>3</b>	<b>55</b>	<b>98</b>	<b>629</b>	<b>16</b>	<b>56</b>	<b>52</b>	<b>164</b>	<b>1,320</b>

District	Intervention action		Intensive Family Support		Family Support		Referral to external program		Safety issues addressed		Action not possible		In process		Total
	Aboriginal	Non-Aboriginal	Aboriginal	Non-Aboriginal	Aboriginal	Non-Aboriginal	Aboriginal	Non-Aboriginal	Aboriginal	Non-Aboriginal	Aboriginal	Non-Aboriginal	Aboriginal	Non-Aboriginal	
<b>South West</b>															
Substantiated	13	47	17	61	0	3	1	0	16	70	0	6	0	0	234
Not substantiated	0	0	0	1	0	4	4	0	24	128	0	0	0	0	161
Other concerns assessed	0	0	0	0	0	1	0	0	0	2	0	0	0	0	3
Unable to complete	0	0	0	0	0	0	0	0	0	0	12	36	0	0	48
In process	0	0	0	0	0	0	0	0	0	0	0	0	56	218	274
<b>Total</b>	<b>13</b>	<b>47</b>	<b>17</b>	<b>62</b>	<b>0</b>	<b>8</b>	<b>5</b>	<b>0</b>	<b>40</b>	<b>200</b>	<b>12</b>	<b>42</b>	<b>56</b>	<b>218</b>	<b>720</b>

<b>West Kimberley</b>															
Substantiated	44	1	90	5	0	0	0	0	95	2	1	1	0	0	239
Not substantiated	0	0	14	0	3	0	0	0	96	1	0	0	0	0	114
Other concerns assessed	0	0	0	0	0	0	0	0	0	0	0	0	0	0	0
Unable to complete	0	0	0	0	0	0	0	0	0	0	21	8	0	0	29
In process	0	0	0	0	0	0	0	0	0	0	0	0	116	64	180
<b>Total</b>	<b>44</b>	<b>1</b>	<b>104</b>	<b>5</b>	<b>3</b>	<b>0</b>	<b>0</b>	<b>0</b>	<b>191</b>	<b>3</b>	<b>22</b>	<b>9</b>	<b>116</b>	<b>64</b>	<b>562</b>





District	Intervention action		Intensive Family Support		Family Support		Referral to external program		Safety issues addressed		Action not possible		In process		Total
	Aboriginal	Non-Aboriginal	Aboriginal	Non-Aboriginal	Aboriginal	Non-Aboriginal	Aboriginal	Non-Aboriginal	Aboriginal	Non-Aboriginal	Aboriginal	Non-Aboriginal	Aboriginal	Non-Aboriginal	
<b>Wheatbelt</b>															
Substantiated	18	26	28	22	1	2	0	0	15	15	0	0	0	0	127
Not substantiated	0	0	1	0	0	2	0	0	38	85	0	0	0	0	126
Other concerns assessed	0	0	0	0	0	0	0	0	3	7	0	0	0	0	10
Unable to complete	0	0	0	0	0	0	0	0	0	0	17	16	0	0	33
In process	0	0	0	0	0	0	0	0	0	0	0	0	90	102	192
<b>Total</b>	<b>18</b>	<b>26</b>	<b>29</b>	<b>22</b>	<b>1</b>	<b>4</b>	<b>0</b>	<b>0</b>	<b>56</b>	<b>107</b>	<b>17</b>	<b>16</b>	<b>90</b>	<b>102</b>	<b>488</b>
<b>Other work units</b>															
Substantiated	0	0	0	0	0	0	0	0	0	18	0	0	0	0	18
Not substantiated	0	0	0	0	0	0	0	0	2	14	0	0	0	0	7
Other concerns assessed	0	0	2	0	0	0	0	0	0	1	0	0	0	0	3
Unable to complete	0	0	0	0	0	0	0	0	0	0	0	0	0	0	0
In process	0	0	0	0	0	0	0	0	0	0	0	0	0	2	2
<b>Total</b>	<b>0</b>	<b>0</b>	<b>2</b>	<b>0</b>	<b>0</b>	<b>0</b>	<b>0</b>	<b>0</b>	<b>2</b>	<b>33</b>	<b>0</b>	<b>0</b>	<b>0</b>	<b>2</b>	<b>39</b>
<b>Total</b>	<b>341</b>	<b>430</b>	<b>972</b>	<b>987</b>	<b>164</b>	<b>211</b>	<b>66</b>	<b>235</b>	<b>2,231</b>	<b>4,183</b>	<b>408</b>	<b>499</b>	<b>1,299</b>	<b>2,428</b>	<b>14,454</b>

# Protection Applications lodged and Orders Granted, by district

## Protection Applications lodged in 2018-19, by district

District	Applications for Aboriginal children	Applications for non-Aboriginal children
Armadale	68	77
Cannington	67	78
East Kimberley	27	0
Fremantle	44	66
Goldfields	24	12
Great Southern	26	24
Joondalup	18	58
Midland	47	69
Mid-West	51	9
Mirrabooka	38	55
Peel	29	87
Perth	34	39
Pilbara	71	5
Rockingham	36	98
South West	38	85
West Kimberley	51	1
Wheatbelt	43	36
Other work units	2	2
<b>Total</b>	<b>714</b>	<b>801</b>

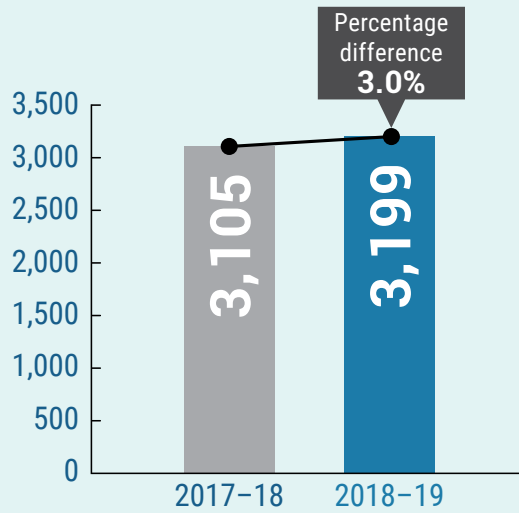
## Protection Orders Granted, by district<sup>(a)</sup>

District	Orders for Aboriginal children	Orders for non-Aboriginal children
Armadale	51	54
Cannington	53	53
East Kimberley	28	0
Fremantle	46	34
Goldfields	32	7
Great Southern	18	17
Joondalup	18	55
Midland	48	45
Mid-West	43	3
Mirrabooka	27	53
Peel	25	53
Perth	21	30
Pilbara	43	1
Rockingham	30	74
South West	25	43
West Kimberley	41	0
Wheatbelt	50	27
Other work units	6	4
<b>Total</b>	<b>605</b>	<b>553</b>

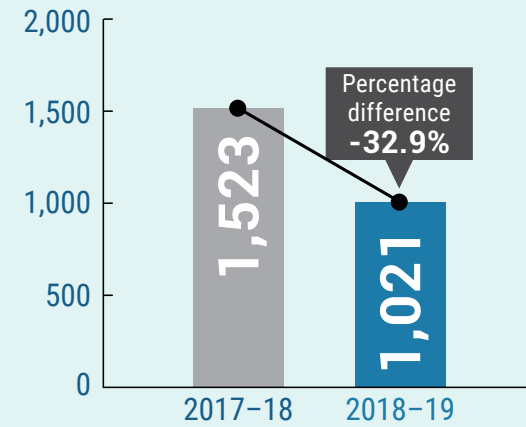
(a) Orders granted in the financial year may relate to applications made in previous years.

# Mandatory reporting

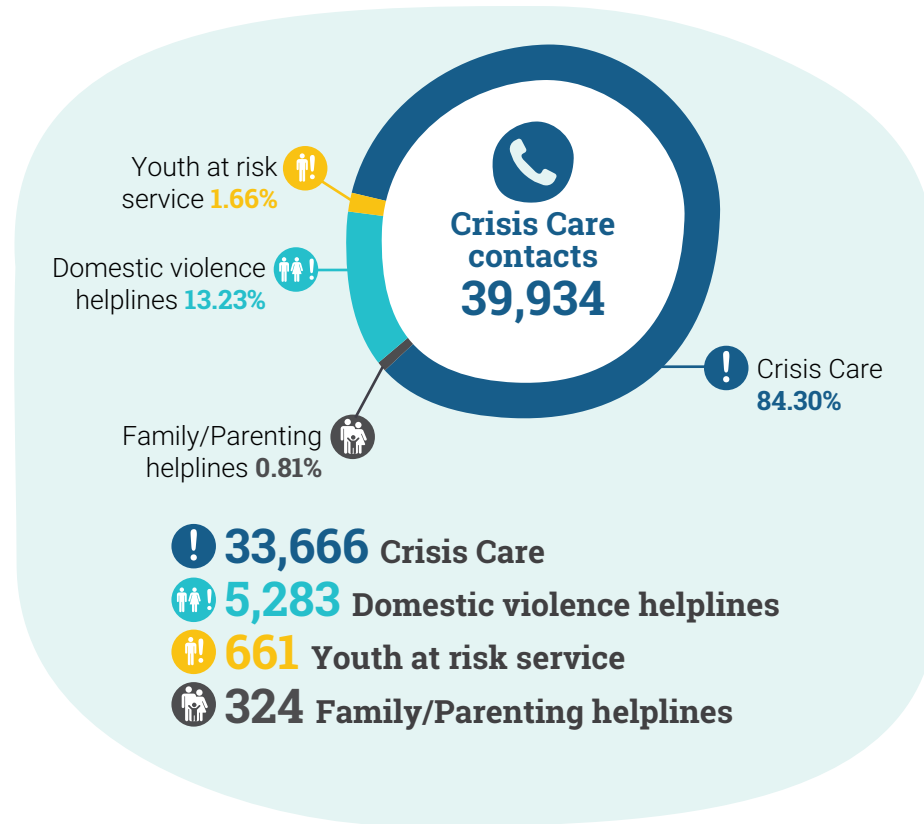
## Mandatory reports



## New safety and wellbeing assessments from mandatory reports



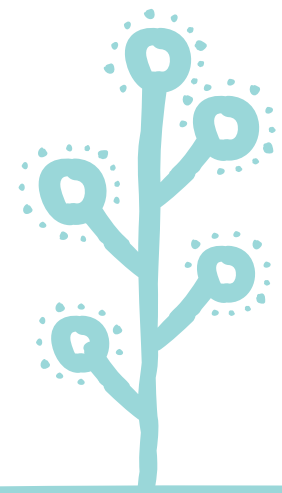
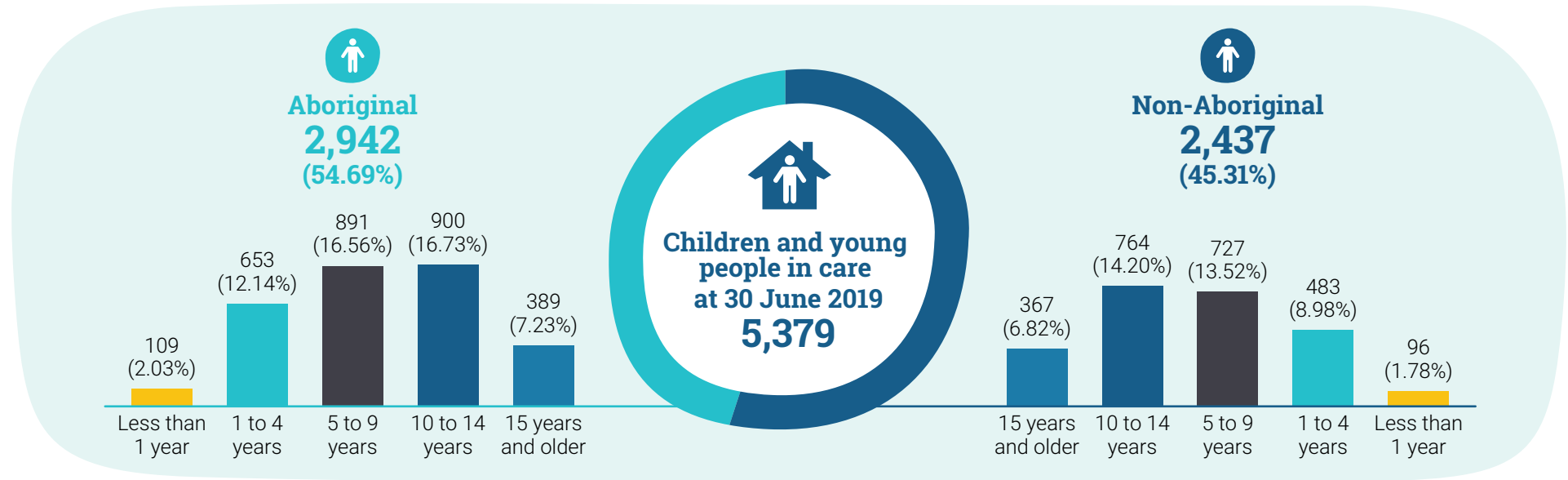
## Crisis Care contacts



## Children and young people in care at 30 June 2019, by district

District	Aboriginal	Non-Aboriginal	Total
Armadale	316	266	582
Cannington	249	195	444
East Kimberley	159	0	159
Fremantle	180	158	338
Goldfields	121	32	153
Great Southern	107	89	196
Joondalup	121	233	354
Midland	239	242	481
Mid-West	210	37	247
Mirrabooka	171	179	350
Peel	94	230	324
Perth	131	157	288
Pilbara	199	14	213
Rockingham	108	255	363
South West	152	228	380
West Kimberley	206	2	208
Wheatbelt	179	109	288
Fostering/Adoption	0	11	11
<b>Total</b>	<b>2,942</b>	<b>2,437</b>	<b>5,379</b>

# Age of children in care at 30 June 2019



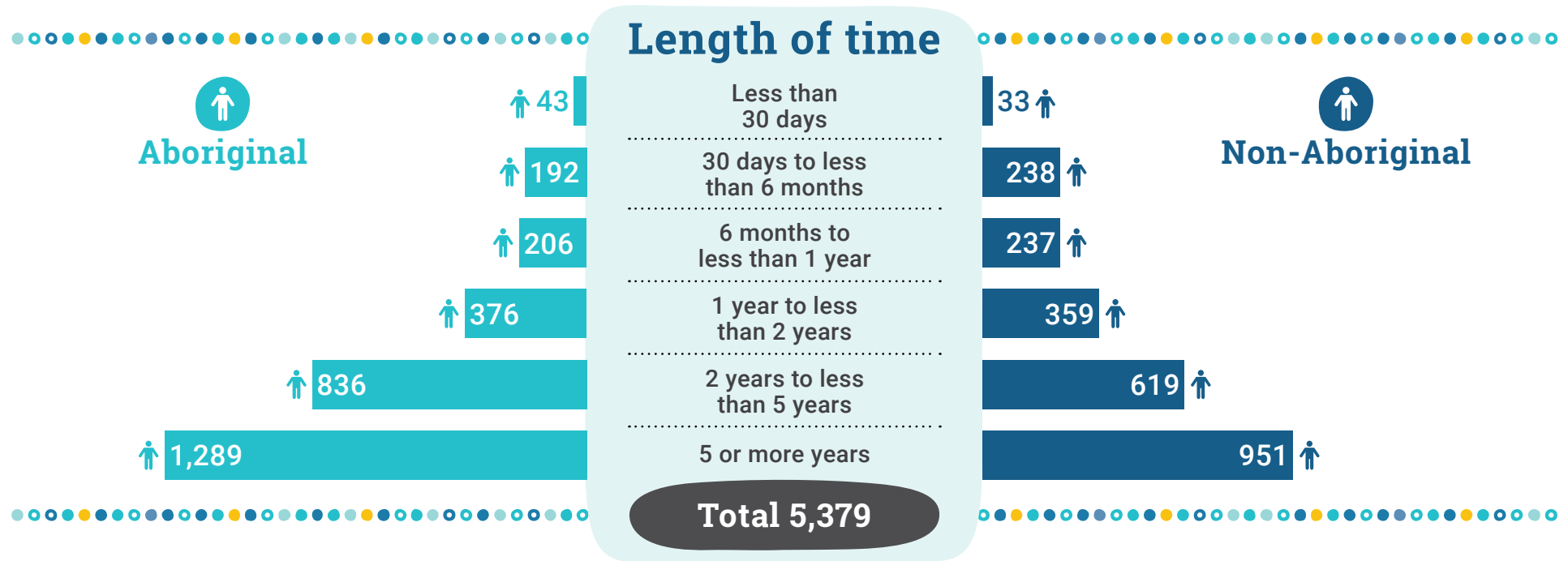
# Age of children and young people in care at 30 June 2019, by district

District	Less than 1 year		1 to 4 years		5 to 9 years		10 to 14 years		15 years and older		Total
	Aboriginal	Non-Aboriginal	Aboriginal	Non-Aboriginal	Aboriginal	Non-Aboriginal	Aboriginal	Non-Aboriginal	Aboriginal	Non-Aboriginal	
Armadale	10	10	63	55	108	78	97	83	38	40	582
Cannington	8	6	67	44	77	53	69	63	28	29	444
East Kimberley	4	0	35	0	40	0	57	0	23	0	159
Fremantle	5	9	42	34	53	42	65	46	15	27	338
Goldfields	9	3	23	13	25	7	44	7	20	2	153
Great Southern	1	3	28	17	34	25	25	31	19	13	196
Joondalup	7	5	19	45	33	80	45	68	17	35	354
Midland	6	10	63	36	64	76	76	89	30	31	481
Mid-West	8	3	50	3	69	7	69	18	14	6	247
Mirrabooka	7	6	36	26	49	60	53	54	26	33	350
Peel	4	5	15	55	29	59	33	79	13	32	324
Perth	5	9	33	24	42	51	32	45	19	28	288
Pilbara	10	0	48	3	61	5	52	4	28	2	213
Rockingham	3	7	31	59	34	90	22	72	18	27	363
South West	5	12	25	41	52	60	47	75	23	40	380
West Kimberley	11	1	40	0	55	0	65	1	35	0	208
Wheatbelt	6	2	35	23	66	34	49	29	23	21	288
Fostering/Adoption	0	5	0	5	0	0	0	0	0	1	11
<b>Total</b>	<b>109</b>	<b>96</b>	<b>653</b>	<b>483</b>	<b>891</b>	<b>727</b>	<b>900</b>	<b>764</b>	<b>389</b>	<b>367</b>	<b>5,379</b>

# Children and young people by length of time in care, by district

District	Less than 30 days		30 days to less than 6 months		6 months to less than 1 year		1 year to less than 2 years		2 years to less than 5 years		5 years or more		Total
	Aboriginal	Non-Aboriginal	Aboriginal	Non-Aboriginal	Aboriginal	Non-Aboriginal	Aboriginal	Non-Aboriginal	Aboriginal	Non-Aboriginal	Aboriginal	Non-Aboriginal	
Armadale	6	5	20	28	23	24	35	50	83	61	149	98	582
Cannington	1	0	12	26	16	10	30	24	81	55	109	80	444
East Kimberley	5	0	9	0	7	0	23	0	54	0	61	0	159
Fremantle	10	0	9	11	15	18	26	20	50	50	70	59	338
Goldfields	0	1	12	5	8	5	21	4	17	13	63	4	153
Great Southern	0	0	22	7	1	19	10	7	20	26	54	30	196
Joondalup	1	5	2	22	7	14	6	47	32	60	73	85	354
Midland	4	4	11	26	12	23	41	40	63	43	108	106	481
Mid-West	6	1	8	3	6	1	27	7	83	5	80	20	247
Mirrabooka	1	1	10	14	8	18	14	25	58	35	80	86	350
Peel	2	2	5	24	9	24	18	37	32	60	28	83	324
Perth	4	1	8	14	21	6	13	10	27	37	58	89	288
Pilbara	1	0	13	2	18	1	18	1	58	3	91	7	213
Rockingham	0	3	4	9	11	31	19	43	36	74	38	95	363
South West	0	5	14	30	10	25	23	25	30	61	75	82	380
West Kimberley	2	0	22	1	19	0	33	0	43	0	87	1	208
Wheatbelt	0	4	11	12	15	14	19	18	69	35	65	26	288
Fostering/Adoption	0	1	0	4	0	4	0	1	0	1	0	0	11
<b>Total</b>	<b>43</b>	<b>33</b>	<b>192</b>	<b>238</b>	<b>206</b>	<b>237</b>	<b>376</b>	<b>359</b>	<b>836</b>	<b>619</b>	<b>1,289</b>	<b>951</b>	<b>5,379</b>

# Children and young people by length of time in care



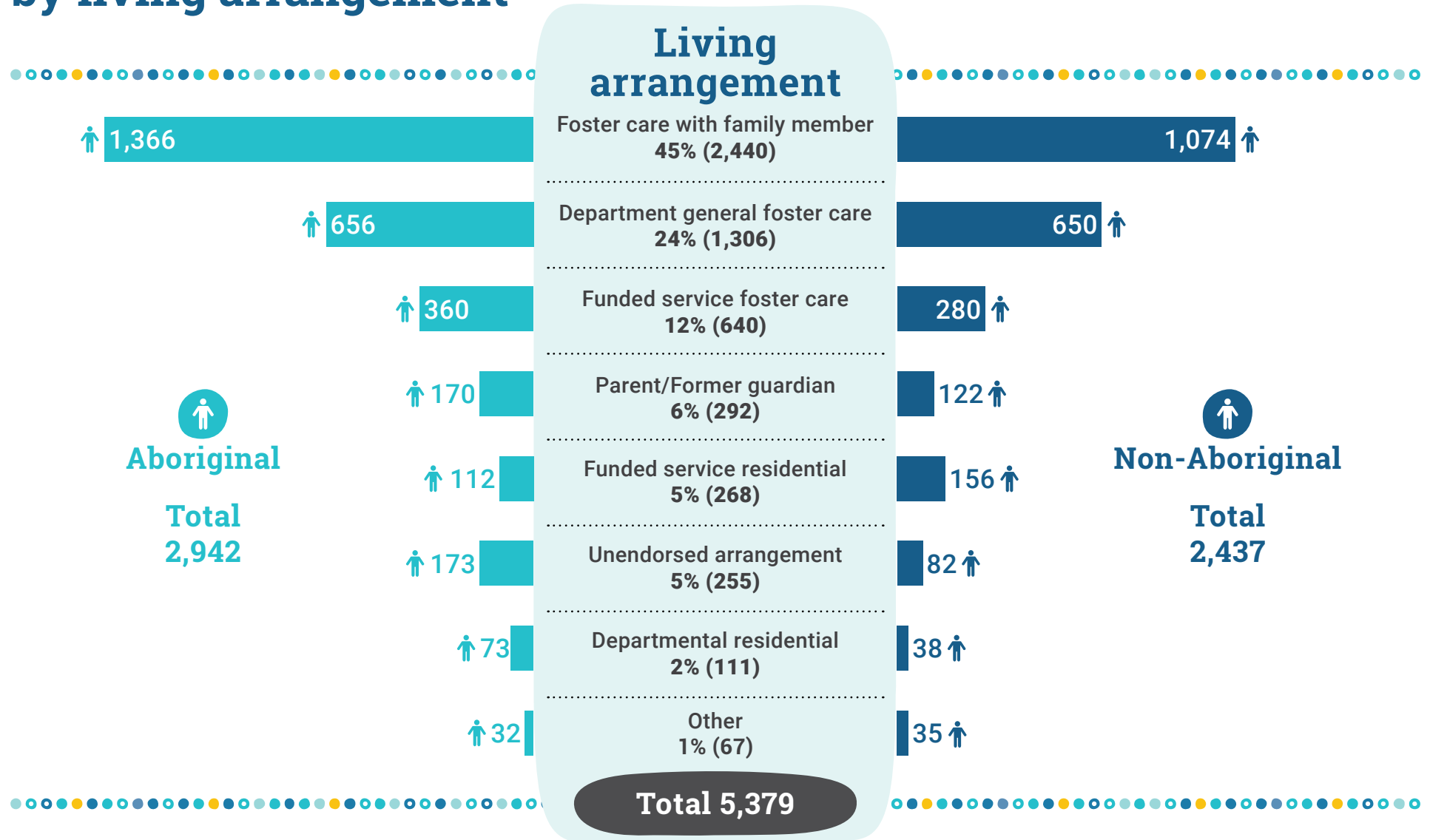
# Number of foster carers approved

At 30 June 2019

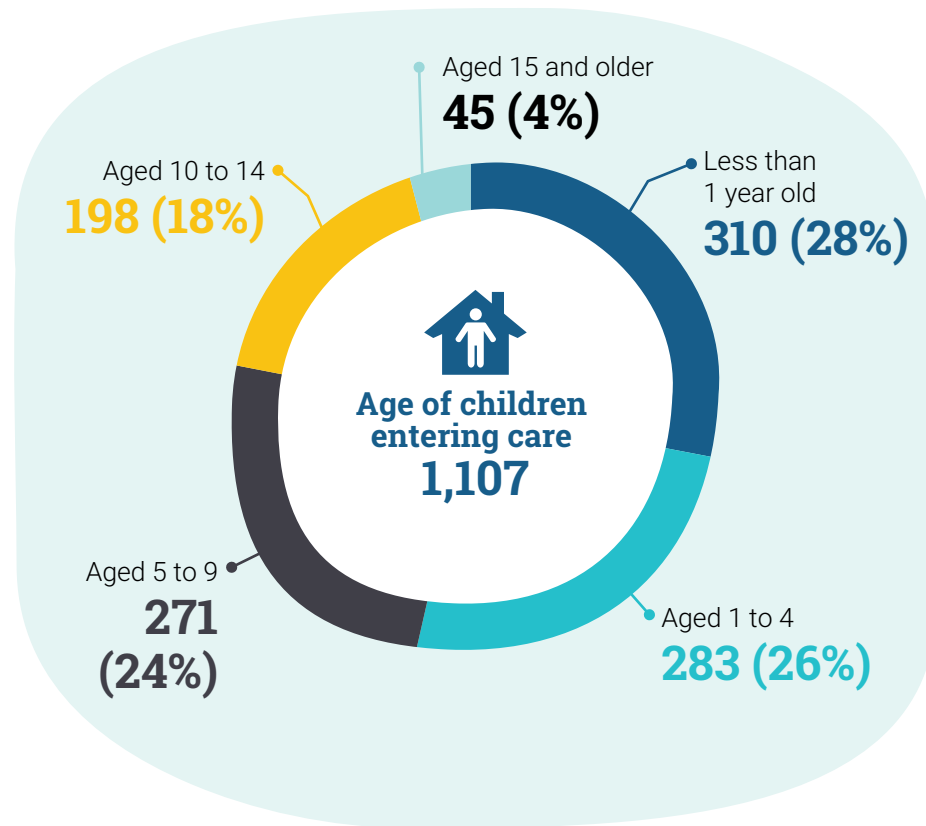
	Aboriginal	Non-Aboriginal	Total
Approved Departmental Foster Carers	48	891	939
Approved Community Organisation Foster Carers	64	616	680
Approved Departmental Family Carers	587	1,024	1,611
<b>Total</b>	<b>699</b>	<b>2,531</b>	<b>3,230</b>



# Children and young people in care at 30 June 2019 by living arrangement

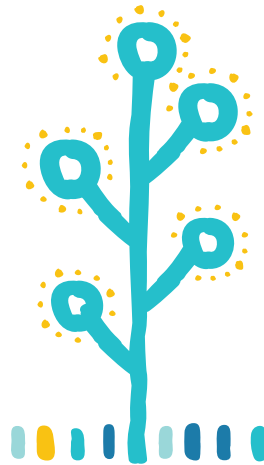
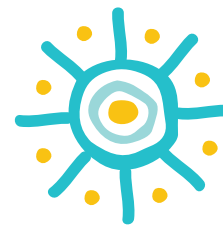


## Age of children entering care during the year



## Children and young people in care with complex needs during the year

Service	Community sector organisations	Children
Transitional high needs	1	42
Specialised fostering	9	134
Disability placement	14	83



# Age of children and young people upon leaving care, by district

District	Less than 1 year		1 to 4 years		5 to 9 years		10 to 14 years		15 to 17 years		18 years or older		Total
	Aboriginal	Non-Aboriginal	Aboriginal	Non-Aboriginal	Aboriginal	Non-Aboriginal	Aboriginal	Non-Aboriginal	Aboriginal	Non-Aboriginal	Aboriginal	Non-Aboriginal	
Armadale	0	0	2	7	7	6	6	5	3	7	12	11	66
Cannington	3	0	2	1	6	3	3	5	1	4	9	5	42
Crisis Care	0	0	0	0	0	1	0	0	0	0	0	0	1
East Kimberley	2	0	4	0	7	0	4	0	0	0	4	0	21
Fremantle	2	2	2	5	1	2	1	7	1	3	5	10	41
Goldfields	2	0	2	1	2	2	1	3	0	0	5	1	19
Great Southern	0	0	2	1	2	1	2	4	1	1	2	5	21
Joondalup	0	2	1	8	2	8	1	3	0	2	5	4	36
Midland	1	2	4	5	5	4	4	1	2	0	11	11	50
Mid-West	0	0	9	4	12	10	12	5	3	0	1	0	56
Mirrabooka	3	2	4	9	8	5	10	5	1	4	4	14	69
Peel	0	1	5	3	3	11	2	5	2	3	2	8	45
Perth	1	1	5	4	3	4	0	5	0	4	4	7	38
Pilbara	0	0	1	0	4	0	5	0	2	1	6	1	20
Rockingham	3	4	6	6	3	21	5	7	0	3	5	14	77
South West	0	1	2	7	0	11	0	14	2	7	2	7	53
West Kimberley	3	0	5	0	4	0	4	0	1	0	7	0	24
Wheatbelt	0	1	5	7	4	1	3	5	2	1	5	8	42
Fostering/Adoption	0	5	0	5	0	0	0	0	0	0	0	0	10
<b>Total</b>	<b>20</b>	<b>21</b>	<b>61</b>	<b>73</b>	<b>73</b>	<b>90</b>	<b>63</b>	<b>74</b>	<b>21</b>	<b>40</b>	<b>89</b>	<b>106</b>	<b>731</b>

# Children and young people who left care by length of time in care, by district

District	Less than 30 days		30 days to less than 6 months		6 months to less than 1 year		1 year to less than 2 years		2 years to less than 5 years		5 years or more		Total
	Aboriginal	Non-Aboriginal	Aboriginal	Non-Aboriginal	Aboriginal	Non-Aboriginal	Aboriginal	Non-Aboriginal	Aboriginal	Non-Aboriginal	Aboriginal	Non-Aboriginal	
Armadale	1	11	0	3	0	0	3	1	14	11	12	10	66
Cannington	0	2	3	1	1	0	1	3	6	8	13	4	42
Crisis Care	0	1	0	0	0	0	0	0	0	0	0	0	1
East Kimberley	7	0	0	0	0	0	3	0	7	0	4	0	21
Fremantle	2	6	1	4	2	4	1	0	1	4	5	11	41
Goldfields	4	1	0	0	2	0	0	0	1	4	5	2	19
Great Southern	1	4	0	0	0	0	0	0	5	4	3	4	21
Joondalup	0	5	0	5	1	3	1	4	3	5	4	5	36
Midland	6	1	1	3	2	2	0	3	5	4	13	10	50
Mid-West	7	12	0	1	0	0	3	0	19	6	8	0	56
Mirrabooka	1	3	4	3	1	3	0	5	17	9	7	16	69
Peel	0	7	5	2	1	1	1	2	5	10	2	9	45
Perth	2	3	1	7	0	2	0	1	6	4	4	8	38
Pilbara	1	0	2	0	0	0	3	1	8	0	4	1	20
Rockingham	3	7	7	9	0	6	4	3	2	15	6	15	77
South West	0	3	2	2	0	8	0	9	0	10	4	15	53
West Kimberley	2	0	4	0	1	0	4	0	4	0	9	0	24
Wheatbelt	1	3	2	2	0	1	4	6	6	4	6	7	42
Fostering/Adoption	0	2	0	3	0	4	0	1	0	0	0	0	10
<b>Total</b>	<b>38</b>	<b>71</b>	<b>32</b>	<b>45</b>	<b>11</b>	<b>34</b>	<b>28</b>	<b>39</b>	<b>109</b>	<b>98</b>	<b>109</b>	<b>117</b>	<b>731</b>

Where children have experienced more than one period of care in 2018-19, the length of time of the most recent period of care is used.

# Adoption orders granted by the Family Court or country of origin, by type of adoption

Type of adoption	2014-15	2015-16	2016-17	2017-18	2018-19
Adult	5	9	17	14	12
Carer	2	0	2	3	1
Inter-country	3	4	11	11	6
Local	7	3	5	2	5
Step-parent	12	13	9	7	7
<b>Total</b>	<b>29</b>	<b>29</b>	<b>44</b>	<b>37</b>	<b>31</b>

## Post-adoption information services

This data shows the number of post-adoption information services provided during the financial year.

Services	2014-15	2015-16	2016-17	2017-18	2018-19
Registrations where services were provided <sup>(a)</sup>	846	883	935	873	913
Provision of sensitive information	105	154	144	106	119
Duty enquiry by registered client	360	406	380	433	426
Facilitated contact between adoption parties	139	185	160	103	102
Outreach services	81	121	107	105	152
Death notifications <sup>(b)</sup>	72	111	100	94	155

(a) Includes registrations made in previous years as services can be provided over time.

(b) The Department is legislated to advise parties to an adoption about the death of other parties to the adoption.

