



Government of Western Australia  
Department of Communities

**Child protection -  
activity performance information**

**2019-20**





## Accessibility statement

The Department of Communities strives to achieve online accessibility when delivering information to be inclusive of a wide range of people, including people with disability. This report has been designed as an accessible PDF. Some parts of the report may not achieve accessibility standards, for example the text size in some financial tables has been reduced to fit an A4 page. If you require an alternative format, please email: [enquiries@communities.wa.gov.au](mailto:enquiries@communities.wa.gov.au)

## Acknowledgement of country and peoples

We acknowledge the Aboriginal and Torres Strait Islander peoples as traditional custodians of this land and pay respect to Elders past, present, and emerging.

## Contact details

### Department of Communities

**Address**

5 Newman Court  
Fremantle WA 6160

**PO Address**

Locked Bag 5000  
Fremantle WA 6959

**Telephone:** 08 6217 6888

**Country free call:** 1800 176 888

**Email:** [enquiries@communities.wa.gov.au](mailto:enquiries@communities.wa.gov.au)

**Website:** [www.communities.wa.gov.au](http://www.communities.wa.gov.au)

Translating and Interpreting Service (TIS) – Telephone: 13 14 50

If you are Deaf or have a hearing or speech impairment, contact us through the [National Relay Service](#).



# Contents

The year at a glance.....	1	Children and young people by length of time in care, by district.....	19
Family Support Network clients .....	2	Children and young people by length of time in care .....	20
Intensive Family Support cases, Intensive Family Support Service referrals, Aboriginal In-home Support Service referrals, Best Beginnings Plus cases and Parent Support cases, by district.....	3	Number of foster carers approved.....	20
Effectiveness of Aboriginal In-home Support Service and Intensive Family Support Service referrals in 2018-19 .....	4	Number of new Departmental foster carer households approved during 2019-20, by district .....	21
Child protection notifications .....	4	Children and young people in care at 30 June 2020 by living arrangement .....	22
Action taken as a result of Child Protection Investigations .....	5	Age of children entering care during the year .....	23
Outcome of assessed concerns.....	6	Children and young people with complex needs, in care during the year .....	23
Outcomes of child protection investigations, by district .....	7	Reasons why children left care* .....	23
Protection applications lodged and orders granted, by district.....	14	Age of children and young people upon leaving care, by district.....	24
Mandatory reporting .....	15	Children and young people who left care by length of time in care, by district.....	25
Crisis Care contacts.....	16	Adoption orders granted by the Family Court or country of origin, by type of adoption.....	26
Children and young people in care at 30 June 2020, by district.....	16	Post-adoption information services .....	26
Age of children in care at 30 June 2020 .....	17		
Age of children and young people in care at 30 June 2020, by district.....	18		

# The year at a glance



Children and young people needing protection are safe from abuse and harm



**63,653**  
Contacts to the Department



**18,022**  
Child protection notifications



**14,192**  
Child Protection Investigations



**1,079**  
Protection orders granted



**49,198**  
Family and domestic violence incidents with and without children



**3,677**  
Mandatory reports



Children and young people in the Chief Executive Officer's care receive a high quality of care and have much improved life chances



**5,498**  
Children in care



**262**  
Children with complex needs



**3,264**  
Foster carer households



**4,479**  
Children in foster/family care

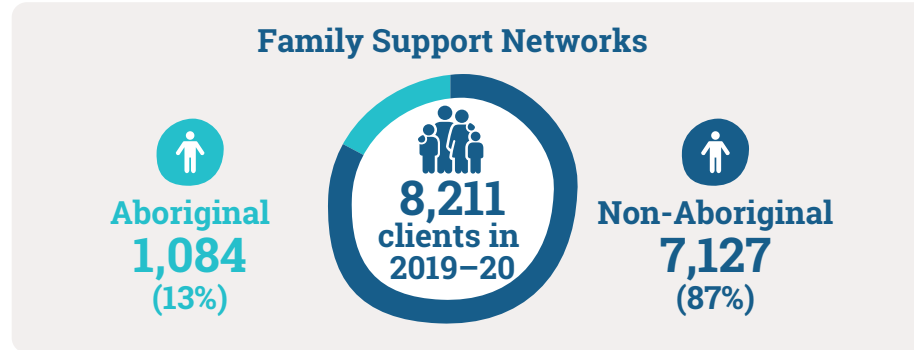


**375**  
Children in residential care



**2,234**  
Viewpoint surveys completed by children in care

# Family Support Network clients



Family Support Network corridor	Number of cases			Number of clients			Aboriginal clients		
	Assessment and coordination	Intensive case management	Total cases	Assessment and coordination	Intensive case management	Total clients	Assessment and Coordination	Intensive case management	Total clients
Armadale / Cannington	668	98	766	1,988	416	2,404	200	57	257
Fremantle / Rockingham	660	77	737	1,890	323	2,213	270	63	333
Mirrabooka / Joondalup	464	61	525	1,417	248	1,665	194	35	229
Perth / Midland	514	125	639	1,593	480	2,073	193	96	289
<b>Total</b>	<b>2,306</b>	<b>361</b>	<b>2,667</b>	<b>6,888</b>	<b>1,467</b>	<b>8,355*</b>	<b>857</b>	<b>251</b>	<b>1,108*</b>

\*The client count in this table is higher than the same in the above infographic. This discrepancy is due to clients being recorded in multiple corridors.

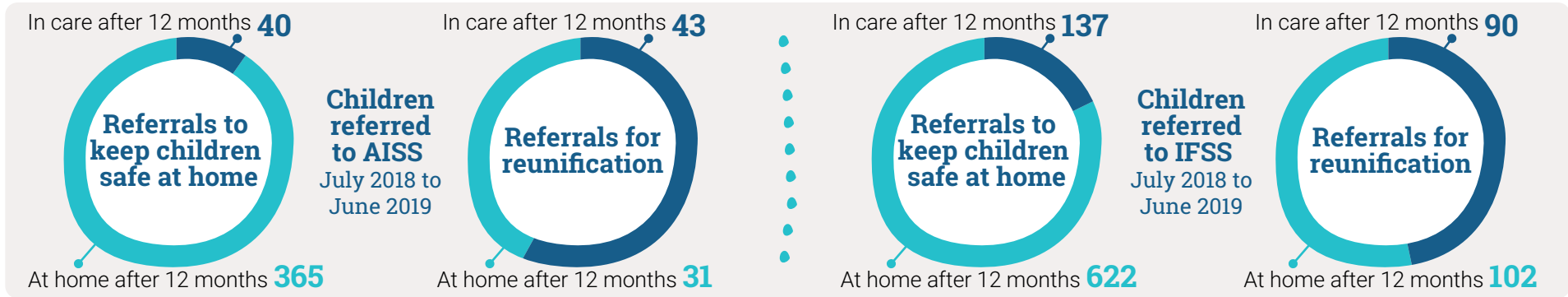
# Intensive Family Support cases, Intensive Family Support Service referrals, Aboriginal In-home Support Service referrals, Best Beginnings Plus cases and Parent Support cases, by district

District	Intensive Family Support cases**	Intensive Family Support Service referrals	Aboriginal In-home Support Service* referrals	Best Beginnings Plus cases	Parent Support cases
Armadale	153	30	16	36	6
Cannington	177	32	29	31	42
Crisis Care	0	0	37	0	2
East Kimberley	66	17	0	16	3
Fremantle	142	37	27	42	2
Goldfields	69	11	0	12	0
Great Southern	61	20	0	8	24
Joondalup	105	54	24	30	11
Midland	166	71	28	60	1
Mid-West	89	24	0	11	0
Mirrabooka	131	35	27	40	1
Peel	46	23	3	25	5
Perth	129	39	24	34	12
Pilbara	141	17	0	22	8
Rockingham	103	30	11	20	13
South West	90	19	0	26	7
West Kimberley	131	18	0	15	3
Wheatbelt	63	6	0	9	1
<b>Total</b>	<b>1,862</b>	<b>483</b>	<b>226</b>	<b>437</b>	<b>141</b>

\* The Aboriginal In-home Support Service is a metropolitan service only.

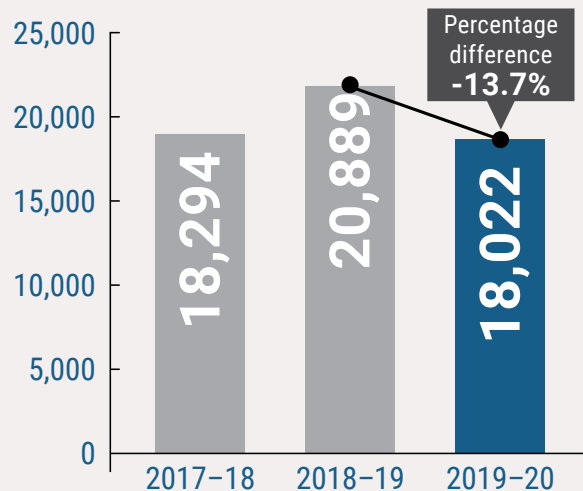
\*\* The count of Intensive Family Support Cases is now provided by family group rather than individual children as published in previous reports.

# Effectiveness of Aboriginal In-home Support Service and Intensive Family Support Service referrals in 2018-19

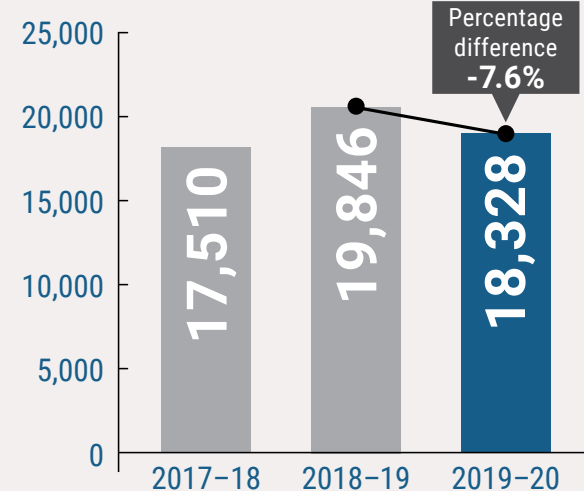


## Child protection notifications

### Child protection notifications

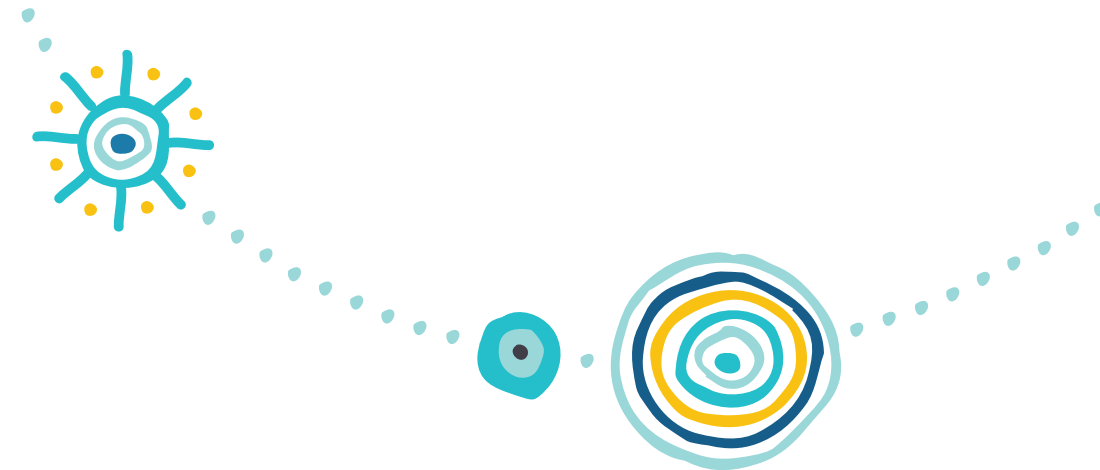


### Number of children in child protection cases



# Action taken as a result of Child Protection Investigations

Outcome of Child Protection Investigations	Substantiated		Not substantiated		Unable to complete assessment		In process		Total
	Aboriginal	Non-Aboriginal	Aboriginal	Non-Aboriginal	Aboriginal	Non-Aboriginal	Aboriginal	Non-Aboriginal	
Intervention action	364	331	0	0	0	0	2	5	702
Commence Family Support (s.21)	68	60	55	66	0	0	1	0	250
Safety issues addressed – No further action	654	1,082	1,413	3,207	0	0	3	5	6,364
Action not possible	71	33	0	0	364	619	0	0	1,087
In process	7	46	0	2	0	0	1,105	2,356	3,516
Commence Intensive Family Support (s.32)	893	946	55	63	0	0	3	7	1,967
Referral to external program	16	102	58	129	0	0	1	0	306
<b>Total</b>	<b>2,073</b>	<b>2,600</b>	<b>1,581</b>	<b>3,467</b>	<b>364</b>	<b>619</b>	<b>1,115</b>	<b>2,373</b>	<b>14,192</b>





# Outcome of assessed concerns

Outcome of assessed concerns	Neglect		Emotional abuse - FDV		Emotional abuse - other		Physical abuse		Sexual abuse		Wellbeing concerns		Total
	Aboriginal	Non-Aboriginal	Aboriginal	Non-Aboriginal	Aboriginal	Non-Aboriginal	Aboriginal	Non-Aboriginal	Aboriginal	Non-Aboriginal	Aboriginal	Non-Aboriginal	
Substantiated	224	174	211	247	46	118	67	150	40	114	7	1	1,399
Substantiated likelihood harm	753	775	1,249	1,201	224	380	271	443	89	193	10	10	5,598
Not substantiated	1,023	1,456	821	1,231	318	724	640	1,598	335	1,036	27	11	9,220
No concern	0	0	0	0	0	0	0	0	0	0	2	9	11
Concern	0	0	0	0	0	0	0	0	0	0	1	1	2
Suitable adult	1	0	1	2	0	0	1	0	0	1	6	9	21
No suitable adult	5	2	0	0	1	2	0	0	0	0	14	34	58
In process	254	657	362	903	89	245	162	600	80	359	5	4	3,720
Unable to complete <sup>(*)</sup>	175	249	193	282	64	118	126	195	94	197	4	9	1,706
<b>Total</b>	<b>2,435</b>	<b>3,313</b>	<b>2,837</b>	<b>3,866</b>	<b>742</b>	<b>1,587</b>	<b>1,267</b>	<b>2,986</b>	<b>638</b>	<b>1,900</b>	<b>76</b>	<b>88</b>	<b>21,735</b>

A child safety investigation may identify more than one concern and the Department assesses each of these concerns individually.

\*Refers to circumstances such as a young person's refusal to engage with the Department's worker, or when a subject child or family has relocated during an investigation and their whereabouts are unknown.

# Outcomes of child protection investigations, by district

District	Intervention action		Intensive Family Support		Family Support		Referral to external program		Safety issues addressed		Action not possible		In process		Total	
	Aboriginal	Non-Aboriginal	Aboriginal	Non-Aboriginal	Aboriginal	Non-Aboriginal	Aboriginal	Non-Aboriginal	Aboriginal	Non-Aboriginal	Aboriginal	Non-Aboriginal	Aboriginal	Non-Aboriginal		
<b>Armadale</b>																
Substantiated	39	53	32	121	5	0	3	16	46	177	6	3	0	9	510	
Not substantiated	0	0	2	9	3	2	10	47	147	449	0	0	0	2	671	
Unable to complete	0	0	0	0	0	0	0	0	0	0	26	67	0	0	93	
In process	0	2	0	0	0	0	0	0	0	0	0	0	82	258	342	
<b>Total</b>	<b>39</b>	<b>55</b>	<b>34</b>	<b>130</b>	<b>8</b>	<b>2</b>	<b>13</b>	<b>63</b>	<b>193</b>	<b>626</b>	<b>32</b>	<b>70</b>	<b>82</b>	<b>269</b>	<b>1,616</b>	
<b>Cannington</b>																
Substantiated	22	30	58	80	1	0	1	14	51	79	3	0	0	4	343	
Not substantiated	0	0	3	12	2	3	7	11	68	288	0	0	0	0	394	
Unable to complete	0	0	0	0	0	0	0	0	0	0	14	32	0	0	46	
In process	0	0	0	0	0	0	1	0	0	0	0	0	52	117	170	
<b>Total</b>	<b>22</b>	<b>30</b>	<b>61</b>	<b>92</b>	<b>3</b>	<b>3</b>	<b>9</b>	<b>25</b>	<b>119</b>	<b>367</b>	<b>17</b>	<b>32</b>	<b>52</b>	<b>121</b>	<b>953</b>	

District	Intervention action		Intensive Family Support		Family Support		Referral to external program		Safety issues addressed		Action not possible		In process		Total
	Aboriginal	Non-Aboriginal	Aboriginal	Non-Aboriginal	Aboriginal	Non-Aboriginal	Aboriginal	Non-Aboriginal	Aboriginal	Non-Aboriginal	Aboriginal	Non-Aboriginal	Aboriginal	Non-Aboriginal	

### East Kimberley

Substantiated	18	0	60	1	9	1	0	0	72	1	2	0	0	0	164
Not substantiated	0	0	7	0	3	0	0	0	86	4	0	0	0	0	100
Unable to complete	0	0	0	0	0	0	0	0	0	0	17	2	0	0	19
In process	0	0	0	0	0	0	0	0	0	0	0	0	89	7	96
<b>Total</b>	<b>18</b>	<b>0</b>	<b>67</b>	<b>1</b>	<b>12</b>	<b>1</b>	<b>0</b>	<b>0</b>	<b>158</b>	<b>5</b>	<b>19</b>	<b>2</b>	<b>89</b>	<b>7</b>	<b>379</b>

### Fremantle

Substantiated	23	21	71	83	1	6	0	7	10	51	1	4	0	0	278
Not substantiated	0	0	0	1	17	25	9	12	87	252	0	0	0	0	403
Unable to complete	0	0	0	0	0	0	0	0	0	0	18	59	0	0	77
In process	1	0	3	3	1	0	0	0	0	0	0	0	27	94	129
<b>Total</b>	<b>24</b>	<b>21</b>	<b>74</b>	<b>87</b>	<b>19</b>	<b>31</b>	<b>9</b>	<b>19</b>	<b>97</b>	<b>303</b>	<b>19</b>	<b>63</b>	<b>27</b>	<b>94</b>	<b>887</b>

### Goldfields

Substantiated	12	8	45	19	13	2	0	0	15	20	1	0	0	0	135
Not substantiated	0	0	5	5	7	7	0	0	87	49	0	0	0	0	160
Unable to complete	0	0	0	0	0	0	0	0	0	0	10	10	0	0	20
In process	0	0	0	0	0	0	0	0	0	0	0	0	117	29	146
<b>Total</b>	<b>12</b>	<b>8</b>	<b>50</b>	<b>24</b>	<b>20</b>	<b>9</b>	<b>0</b>	<b>0</b>	<b>102</b>	<b>69</b>	<b>11</b>	<b>10</b>	<b>117</b>	<b>29</b>	<b>461</b>



District	Intervention action		Intensive Family Support		Family Support		Referral to external program		Safety issues addressed		Action not possible		In process		Total
	Aboriginal	Non-Aboriginal	Aboriginal	Non-Aboriginal	Aboriginal	Non-Aboriginal	Aboriginal	Non-Aboriginal	Aboriginal	Non-Aboriginal	Aboriginal	Non-Aboriginal	Aboriginal	Non-Aboriginal	



### Great Southern

Substantiated	16	12	26	38	0	7	0	0	27	60	2	2	0	0	190
Not substantiated	0	0	3	0	5	5	2	0	60	141	0	0	0	0	216
Unable to complete	0	0	0	0	0	0	0	0	0	0	15	24	0	0	39
In process	0	0	0	0	0	0	0	0	0	0	0	0	20	93	113
<b>Total</b>	<b>16</b>	<b>12</b>	<b>29</b>	<b>38</b>	<b>5</b>	<b>12</b>	<b>2</b>	<b>0</b>	<b>87</b>	<b>201</b>	<b>17</b>	<b>26</b>	<b>20</b>	<b>93</b>	<b>558</b>

### Joondalup


Substantiated	21	45	29	69	4	10	0	11	31	107	7	9	0	5	348
Not substantiated	0	0	2	8	6	6	6	11	40	294	0	0	0	0	373
Unable to complete	0	0	0	0	0	0	0	0	0	0	11	52	0	0	63
In process	0	0	0	2	0	0	0	0	0	3	0	0	41	319	365
<b>Total</b>	<b>21</b>	<b>45</b>	<b>31</b>	<b>79</b>	<b>10</b>	<b>16</b>	<b>6</b>	<b>22</b>	<b>71</b>	<b>404</b>	<b>18</b>	<b>61</b>	<b>41</b>	<b>324</b>	<b>1,149</b>

### Midland

Substantiated	40	31	44	124	0	0	4	27	35	134	5	7	4	9	464
Not substantiated	0	0	1	7	1	0	7	4	79	172	0	0	0	0	271
Unable to complete	0	0	0	0	0	0	0	0	0	0	31	98	0	0	129
In process	0	0	0	0	0	0	0	0	0	1	0	0	112	335	448
<b>Total</b>	<b>40</b>	<b>31</b>	<b>45</b>	<b>131</b>	<b>1</b>	<b>0</b>	<b>11</b>	<b>31</b>	<b>114</b>	<b>307</b>	<b>36</b>	<b>105</b>	<b>116</b>	<b>344</b>	<b>1,312</b>



District	Intervention action		Intensive Family Support		Family Support		Referral to external program		Safety issues addressed		Action not possible		In process		Total
	Aboriginal	Non-Aboriginal	Aboriginal	Non-Aboriginal	Aboriginal	Non-Aboriginal	Aboriginal	Non-Aboriginal	Aboriginal	Non-Aboriginal	Aboriginal	Non-Aboriginal	Aboriginal	Non-Aboriginal	



### Mid-West

Substantiated	21	0	82	6	3	0	0	0	75	29	7	1	0	3	227
Not substantiated	0	0	5	0	0	0	0	0	153	71	0	0	0	0	229
Unable to complete	0	0	0	0	0	0	0	0	0	0	25	2	0	0	27
In process	0	1	0	1	0	0	0	0	0	0	0	0	89	42	133
<b>Total</b>	<b>21</b>	<b>1</b>	<b>87</b>	<b>7</b>	<b>3</b>	<b>0</b>	<b>0</b>	<b>0</b>	<b>228</b>	<b>100</b>	<b>32</b>	<b>3</b>	<b>89</b>	<b>45</b>	<b>616</b>

### Mirraboooka

Substantiated	25	22	55	113	0	4	6	16	28	68	8	0	0	3	348
Not substantiated	0	0	0	2	0	1	5	11	81	200	0	0	0	0	300
Unable to complete	0	0	0	0	0	0	0	0	0	0	23	43	0	0	66
In process	0	2	0	0	0	0	0	0	0	0	0	0	32	142	176
<b>Total</b>	<b>25</b>	<b>24</b>	<b>55</b>	<b>115</b>	<b>0</b>	<b>5</b>	<b>11</b>	<b>27</b>	<b>109</b>	<b>268</b>	<b>31</b>	<b>43</b>	<b>32</b>	<b>145</b>	<b>890</b>

### Peel

Substantiated	19	32	2	50	0	2	0	0	23	119	0	1	0	0	248
Not substantiated	0	0	1	0	6	1	0	0	54	207	0	0	0	0	269
Unable to complete	0	0	0	0	0	0	0	0	0	0	13	52	0	0	65
In process	0	0	0	0	0	0	0	0	1	0	0	0	14	103	118
<b>Total</b>	<b>19</b>	<b>32</b>	<b>3</b>	<b>50</b>	<b>6</b>	<b>3</b>	<b>0</b>	<b>0</b>	<b>78</b>	<b>326</b>	<b>13</b>	<b>53</b>	<b>14</b>	<b>103</b>	<b>700</b>

District	Intervention action		Intensive Family Support		Family Support		Referral to external program		Safety issues addressed		Action not possible		In process		Total
	Aboriginal	Non-Aboriginal	Aboriginal	Non-Aboriginal	Aboriginal	Non-Aboriginal	Aboriginal	Non-Aboriginal	Aboriginal	Non-Aboriginal	Aboriginal	Non-Aboriginal	Aboriginal	Non-Aboriginal	

### Perth

Substantiated	11	10	39	79	0	1	1	1	8	33	1	0	3	3	190
Not substantiated	0	0	0	2	0	5	7	3	45	170	0	0	0	0	232
Unable to complete	0	0	0	0	0	0	0	0	0	0	4	7	0	0	11
In process	0	0	0	0	0	0	0	0	0	0	0	0	39	186	225
<b>Total</b>	<b>11</b>	<b>10</b>	<b>39</b>	<b>81</b>	<b>0</b>	<b>6</b>	<b>8</b>	<b>4</b>	<b>53</b>	<b>203</b>	<b>5</b>	<b>7</b>	<b>42</b>	<b>189</b>	<b>658</b>

### Pilbara

Substantiated	43	0	148	10	21	2	0	0	63	13	12	0	0	0	312
Not substantiated	0	0	8	1	2	0	1	0	122	35	0	0	0	0	169
Unable to complete	0	0	0	0	0	0	0	0	0	0	67	10	0	0	77
In process	0	0	0	0	0	0	0	0	0	0	0	0	145	65	210
<b>Total</b>	<b>43</b>	<b>0</b>	<b>156</b>	<b>11</b>	<b>23</b>	<b>2</b>	<b>1</b>	<b>0</b>	<b>185</b>	<b>48</b>	<b>79</b>	<b>10</b>	<b>145</b>	<b>65</b>	<b>768</b>

### Rockingham

Substantiated	5	28	24	82	5	15	0	10	19	78	0	4	0	0	270
Not substantiated	0	0	2	9	1	6	4	30	138	648	0	0	0	0	838
Unable to complete	0	0	0	0	0	0	0	0	0	0	31	84	0	0	115
In process	0	0	0	1	0	0	0	0	1	1	0	0	48	320	371
<b>Total</b>	<b>5</b>	<b>28</b>	<b>26</b>	<b>92</b>	<b>6</b>	<b>21</b>	<b>4</b>	<b>40</b>	<b>158</b>	<b>727</b>	<b>31</b>	<b>88</b>	<b>48</b>	<b>320</b>	<b>1,594</b>



District	Intervention action		Intensive Family Support		Family Support		Referral to external program		Safety issues addressed		Action not possible		In process		Total
	Aboriginal	Non-Aboriginal	Aboriginal	Non-Aboriginal	Aboriginal	Non-Aboriginal	Aboriginal	Non-Aboriginal	Aboriginal	Non-Aboriginal	Aboriginal	Non-Aboriginal	Aboriginal	Non-Aboriginal	



### South West

Substantiated	11	35	27	45	0	6	0	0	12	84	0	2	0	7	229
Not substantiated	0	0	0	1	1	1	0	0	45	131	0	0	0	0	179
Unable to complete	0	0	0	0	0	0	0	0	0	0	13	55	0	0	68
In process	0	0	0	0	0	0	0	0	0	0	0	0	49	144	193
<b>Total</b>	<b>11</b>	<b>35</b>	<b>27</b>	<b>46</b>	<b>1</b>	<b>7</b>	<b>0</b>	<b>0</b>	<b>57</b>	<b>215</b>	<b>13</b>	<b>57</b>	<b>49</b>	<b>151</b>	<b>669</b>

### West Kimberley

Substantiated	31	0	128	1	2	0	0	0	113	4	13	1	0	0	292
Not substantiated	0	0	16	0	1	0	0	0	84	5	0	0	0	0	106
Unable to complete	0	0	0	0	0	0	0	0	0	0	29	9	0	0	38
In process	1	0	0	0	0	0	0	0	0	0	0	0	111	14	127
<b>Total</b>	<b>32</b>	<b>0</b>	<b>144</b>	<b>1</b>	<b>3</b>	<b>0</b>	<b>0</b>	<b>0</b>	<b>198</b>	<b>9</b>	<b>42</b>	<b>9</b>	<b>111</b>	<b>14</b>	<b>563</b>

### Wheatbelt

Substantiated	7	4	23	24	4	4	1	0	25	21	3	0	0	3	119
Not substantiated	0	0	0	6	0	4	0	0	30	66	0	0	0	0	106
Unable to complete	0	0	0	0	0	0	0	0	0	0	17	12	0	0	29
In process	0	0	0	0	0	0	0	0	0	0	0	0	37	88	125
<b>Total</b>	<b>7</b>	<b>4</b>	<b>23</b>	<b>30</b>	<b>4</b>	<b>8</b>	<b>1</b>	<b>0</b>	<b>55</b>	<b>87</b>	<b>20</b>	<b>12</b>	<b>37</b>	<b>91</b>	<b>379</b>



District	Intervention action		Intensive Family Support		Family Support		Referral to external program		Safety issues addressed		Action not possible		In process		Total
	Aboriginal	Non-Aboriginal	Aboriginal	Non-Aboriginal	Aboriginal	Non-Aboriginal	Aboriginal	Non-Aboriginal	Aboriginal	Non-Aboriginal	Aboriginal	Non-Aboriginal	Aboriginal	Non-Aboriginal	



Other work units

Substantiated	0	0	0	1	0	0	0	0	1	4	0	0	0	0	6
Not substantiated	0	0	0	0	0	0	0	0	7	25	0	0	0	0	32
Unable to complete	0	0	0	0	0	0	0	0	0	0	0	1	0	0	1
In process	0	0	0	0	0	0	0	0	0	0	0	0	1	0	1
<b>Total</b>	<b>0</b>	<b>0</b>	<b>0</b>	<b>1</b>	<b>0</b>	<b>0</b>	<b>0</b>	<b>0</b>	<b>8</b>	<b>29</b>	<b>0</b>	<b>1</b>	<b>1</b>	<b>0</b>	<b>40</b>
<b>Grand total</b>	<b>366</b>	<b>336</b>	<b>951</b>	<b>1,016</b>	<b>124</b>	<b>126</b>	<b>75</b>	<b>231</b>	<b>2,070</b>	<b>4,294</b>	<b>435</b>	<b>652</b>	<b>1,112</b>	<b>2,404</b>	<b>14,192</b>



# Protection applications lodged and orders granted, by district

## Protection Applications lodged in 2019-20, by district

District	Applications for Aboriginal children	Applications for non-Aboriginal children
Armadale	83	111
Cannington	52	64
East Kimberley	32	0
Fremantle	59	50
Goldfields	26	12
Great Southern	28	19
Joondalup	37	75
Midland	77	57
Mid-West	44	5
Mirrabooka	51	59
Peel	28	57
Perth	18	24
Pilbara	63	6
Rockingham	25	73
South West	45	79
West Kimberley	76	1
Wheatbelt	39	22
Other work units	0	0
<b>Total</b>	<b>783</b>	<b>714</b>

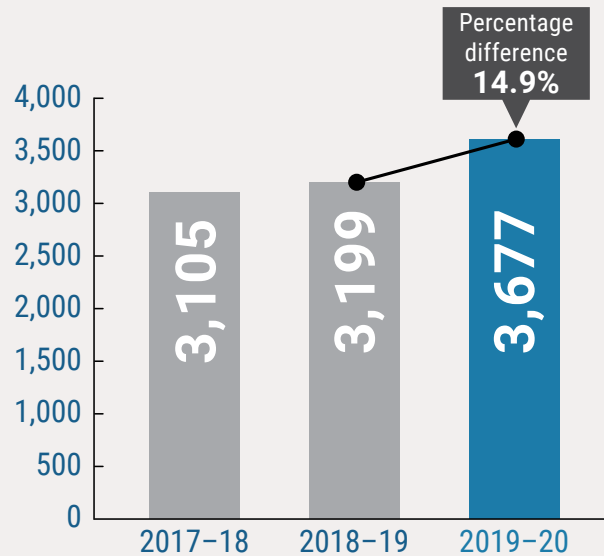
## Protection Orders Granted, by district<sup>(\*)</sup>

District	Orders for Aboriginal children	Orders for non-Aboriginal children
Armadale	50	59
Cannington	44	45
East Kimberley	15	0
Fremantle	42	29
Goldfields	24	9
Great Southern	24	21
Joondalup	13	38
Midland	39	50
Mid-West	50	11
Mirrabooka	29	43
Peel	25	50
Perth	22	26
Pilbara	49	5
Rockingham	21	48
South West	20	54
West Kimberley	68	2
Wheatbelt	31	20
Other work units	1	2
<b>Total</b>	<b>567</b>	<b>512</b>

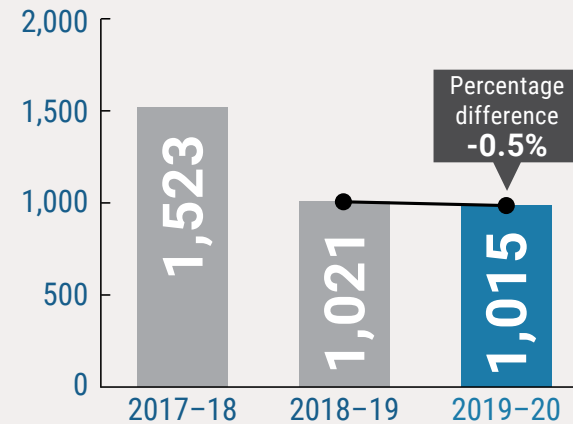
\*Orders granted in the financial year may relate to applications made in previous years.

# Mandatory reporting

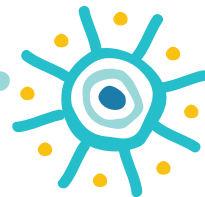
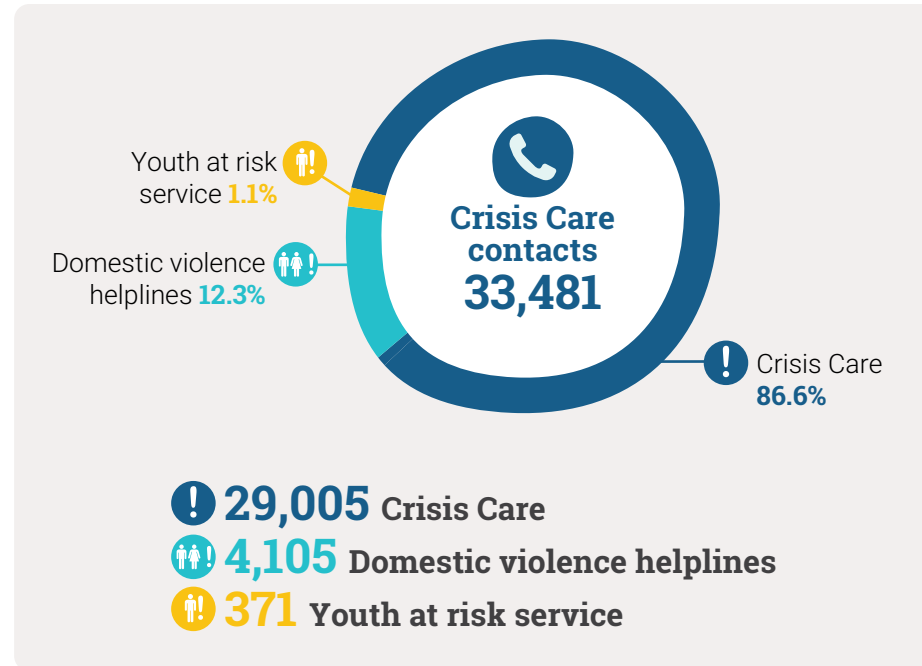
## Mandatory reports



## New Child Protection Investigations from mandatory reports



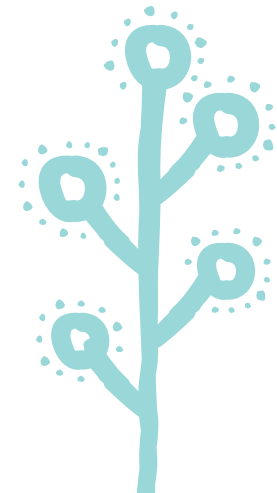
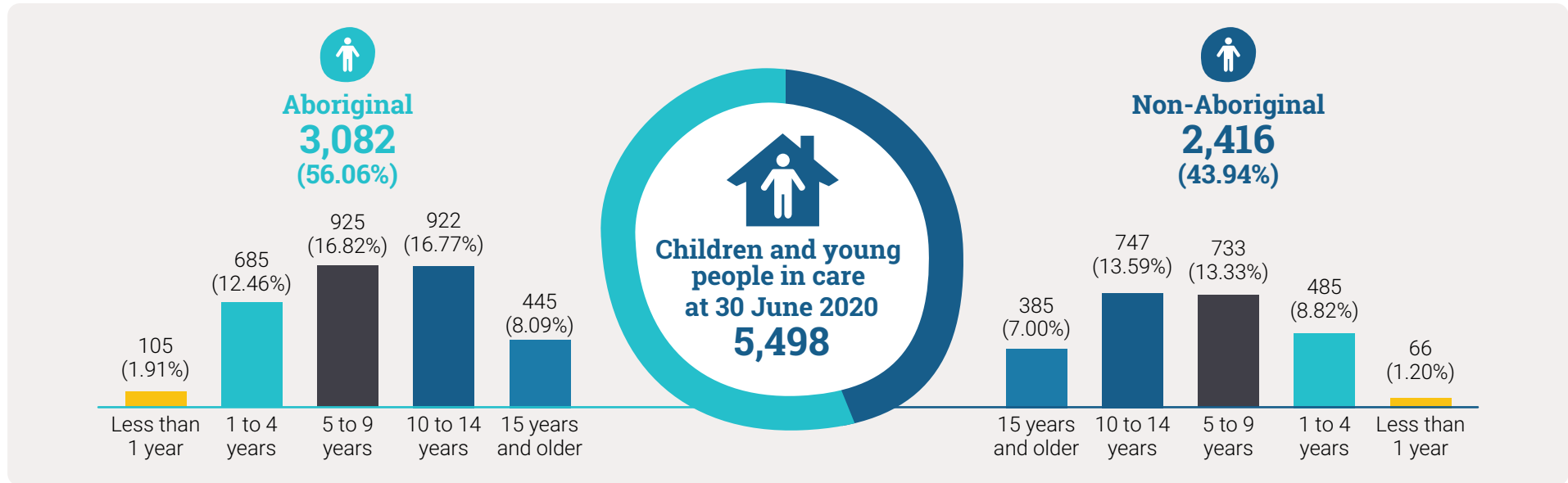
## Crisis Care contacts



## Children and young people in care at 30 June 2020, by district

District	Aboriginal	Non-Aboriginal	Total
Armadale	304	244	548
Cannington	234	209	443
East Kimberley	163	0	163
Fremantle	166	155	321
Goldfields	138	34	172
Great Southern	87	62	149
Joondalup	150	240	390
Midland	298	274	572
Mid-West	216	28	244
Mirrabooka	171	174	345
Peel	118	229	347
Perth	129	150	279
Pilbara	222	10	232
Rockingham	108	241	349
South West	194	266	460
West Kimberley	219	1	220
Wheatbelt	164	89	253
Fostering/Adoption	1	10	11
<b>Total</b>	<b>3,082</b>	<b>2,416</b>	<b>5,498</b>

# Age of children in care at 30 June 2020



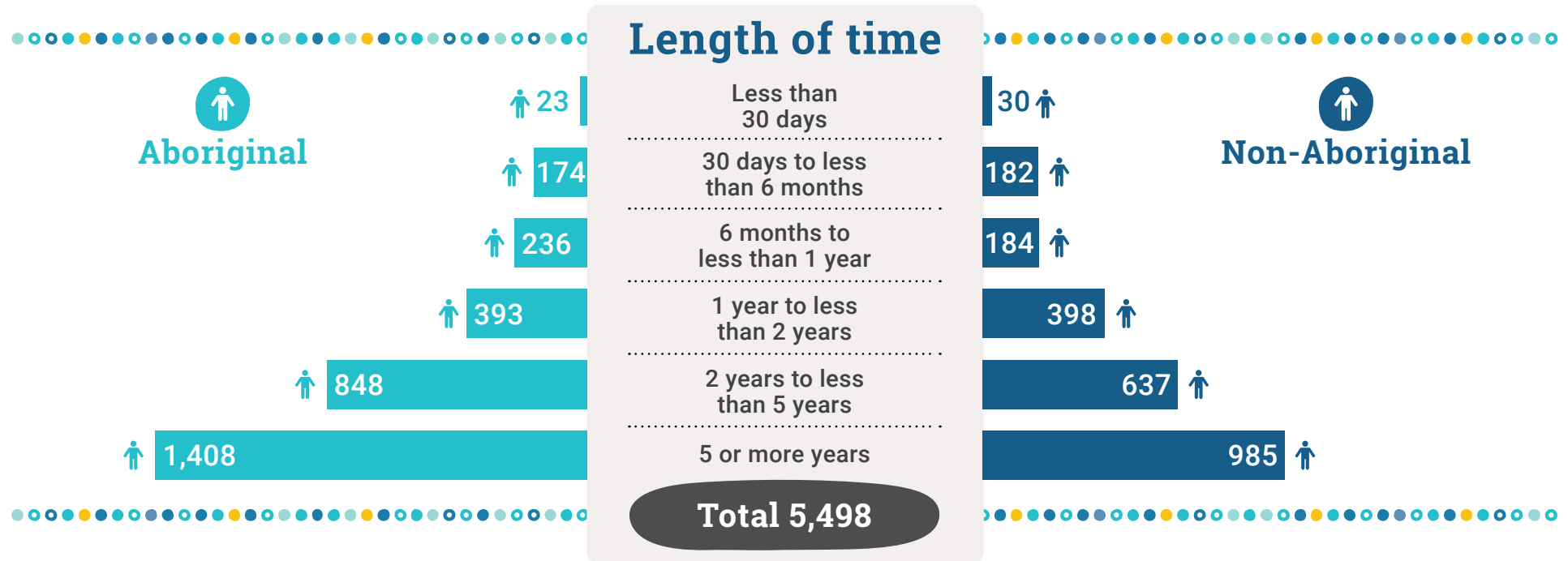
# Age of children and young people in care at 30 June 2020, by district

District	Less than 1 year		1 to 4 years		5 to 9 years		10 to 14 years		15 years and older		Total
	Aboriginal	Non-Aboriginal	Aboriginal	Non-Aboriginal	Aboriginal	Non-Aboriginal	Aboriginal	Non-Aboriginal	Aboriginal	Non-Aboriginal	
Armadale	3	5	57	57	96	73	105	67	43	42	548
Cannington	10	8	48	40	81	62	68	69	27	30	443
East Kimberley	4	0	40	0	43	0	48	0	28	0	163
Fremantle	8	7	38	36	41	40	54	45	25	27	321
Goldfields	9	2	29	13	31	7	40	10	29	2	172
Great Southern	4	0	16	6	31	29	24	13	12	14	149
Joondalup	0	6	29	49	44	74	56	73	21	38	390
Midland	8	11	76	44	85	85	93	89	36	45	572
Mid-West	7	0	56	2	64	5	64	14	25	7	244
Mirrabooka	3	6	38	29	48	53	55	54	27	32	345
Peel	4	7	19	55	39	61	34	70	22	36	347
Perth	5	4	34	28	42	46	32	48	16	24	279
Pilbara	12	0	59	3	75	2	45	4	31	1	232
Rockingham	5	2	20	50	29	90	35	77	19	22	349
South West	5	3	40	55	57	78	63	86	29	44	460
West Kimberley	12	0	54	1	60	0	59	0	34	0	220
Wheatbelt	6	0	31	12	59	28	47	28	21	21	253
Fostering/ Adoption	0	5	1	5	0	0	0	0	0	0	11
<b>Total</b>	<b>105</b>	<b>66</b>	<b>685</b>	<b>485</b>	<b>925</b>	<b>733</b>	<b>922</b>	<b>747</b>	<b>445</b>	<b>385</b>	<b>5,498</b>

# Children and young people by length of time in care, by district

District	Less than 30 days		30 days to less than 6 months		6 months to less than 1 year		1 year to less than 2 years		2 years to less than 5 years		5 years or more		Total
	Aboriginal	Non-Aboriginal	Aboriginal	Non-Aboriginal	Aboriginal	Non-Aboriginal	Aboriginal	Non-Aboriginal	Aboriginal	Non-Aboriginal	Aboriginal	Non-Aboriginal	
Armadale	0	0	6	37	25	17	35	40	75	62	163	88	548
Cannington	2	0	13	21	11	11	27	29	60	64	121	84	443
East Kimberley	1	0	8	0	11	0	22	0	56	0	65	0	163
Fremantle	1	2	20	5	4	23	16	18	61	41	64	66	321
Goldfields	3	0	11	8	6	0	20	5	32	16	66	5	172
Great Southern	3	0	12	5	5	4	10	7	15	20	42	26	149
Joondalup	0	3	4	22	17	20	11	33	39	58	79	104	390
Midland	4	9	15	14	28	22	31	45	89	69	131	115	572
Mid-West	0	0	5	0	21	0	23	5	70	2	97	21	244
Mirrabooka	0	2	9	15	16	9	18	31	42	37	86	80	345
Peel	1	3	8	16	5	13	17	43	48	71	39	83	347
Perth	1	1	4	6	9	8	33	22	23	23	59	90	279
Pilbara	6	0	15	0	23	3	30	0	50	3	98	4	232
Rockingham	0	1	2	9	5	20	11	35	43	87	47	89	349
South West	0	6	10	18	13	27	29	58	56	60	86	97	460
West Kimberley	0	0	29	0	19	0	33	1	49	0	89	0	220
Wheatbelt	1	2	3	3	17	4	27	23	40	24	76	33	253
Fostering/ Adoption	0	1	0	3	1	3	0	3	0	0	0	0	11
<b>Total</b>	<b>23</b>	<b>30</b>	<b>174</b>	<b>182</b>	<b>236</b>	<b>184</b>	<b>393</b>	<b>398</b>	<b>848</b>	<b>637</b>	<b>1,408</b>	<b>985</b>	<b>5,498</b>

# Children and young people by length of time in care



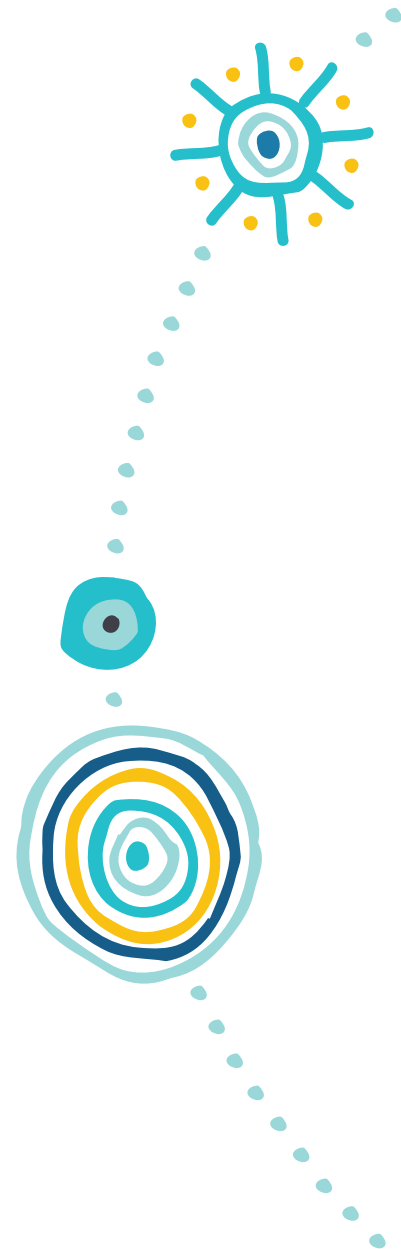
# Number of foster carers approved

At 30 June 2020

	Aboriginal	Non-Aboriginal	Total
Approved Departmental foster carers	45	872	917
Approved community organisation foster carers	56	635	691
Approved departmental family carers	590	1,066	1,656
<b>Total</b>	<b>691</b>	<b>2,573</b>	<b>3,264</b>

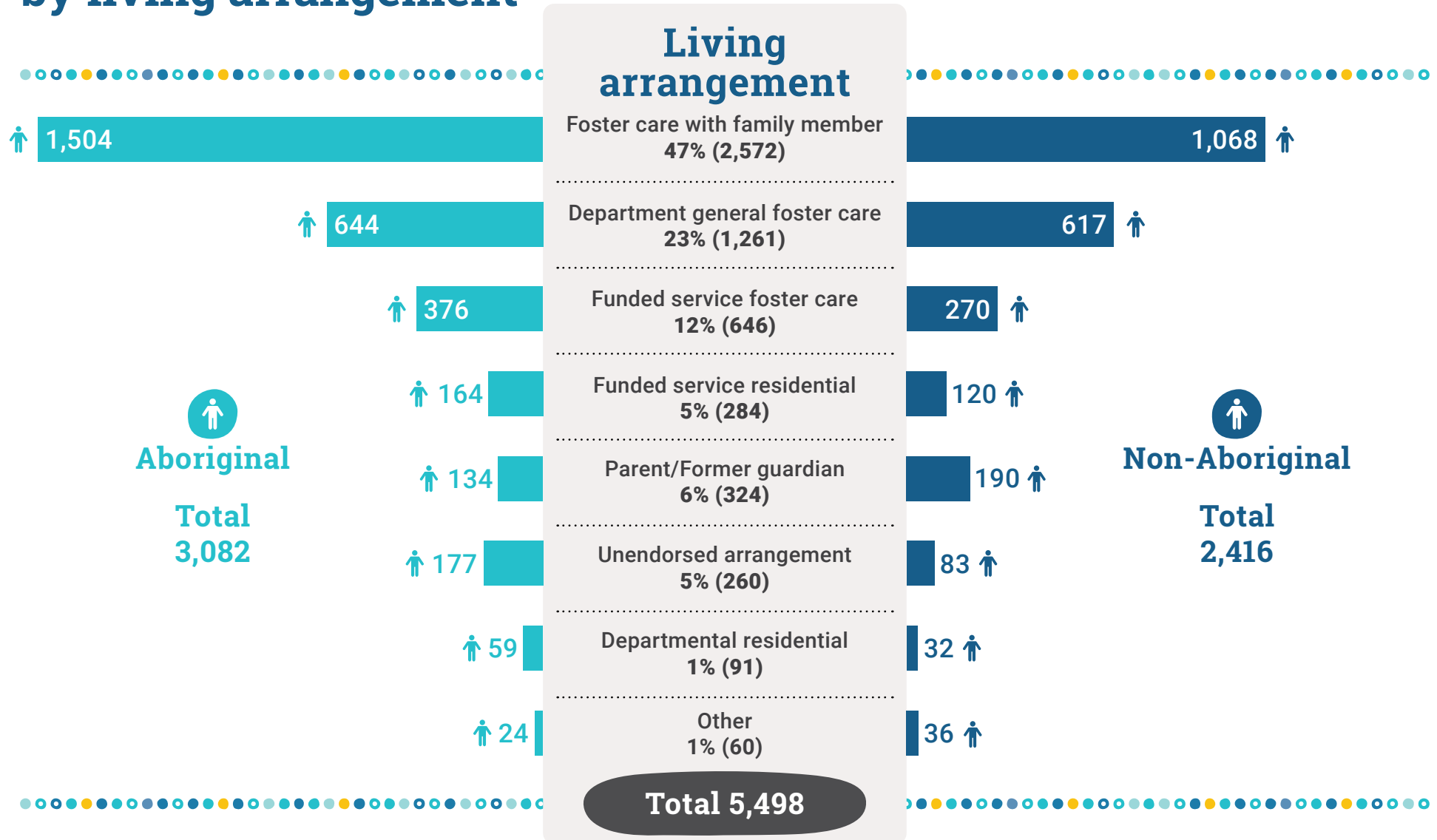
# Number of new Departmental foster carer households approved during 2019-20, by district

District	Total
Armadale	3
Cannington	1
East Kimberley	2
Fremantle	4
Great Southern	3
Joondalup	7
Midland	9
Mirrabooka	6
Peel	5
Perth	3
Pilbara	3
Rockingham	6
South West	5
West Kimberley	3
Wheatbelt	1
Child and carer connection hub	7
<b>Total</b>	<b>68</b>

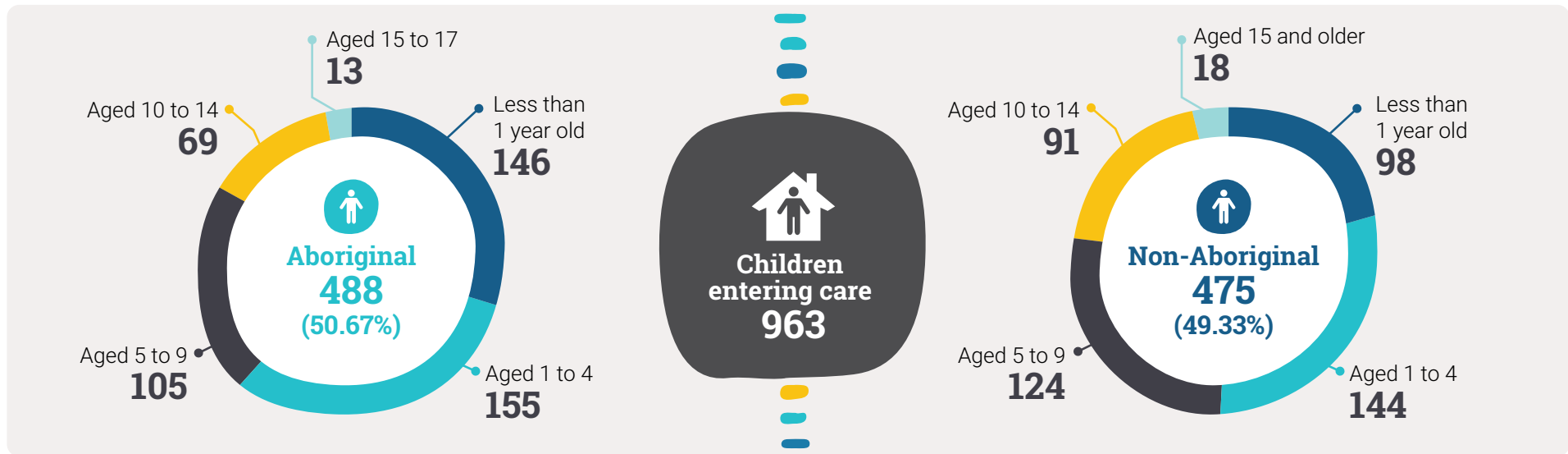




# Children and young people in care at 30 June 2020 by living arrangement



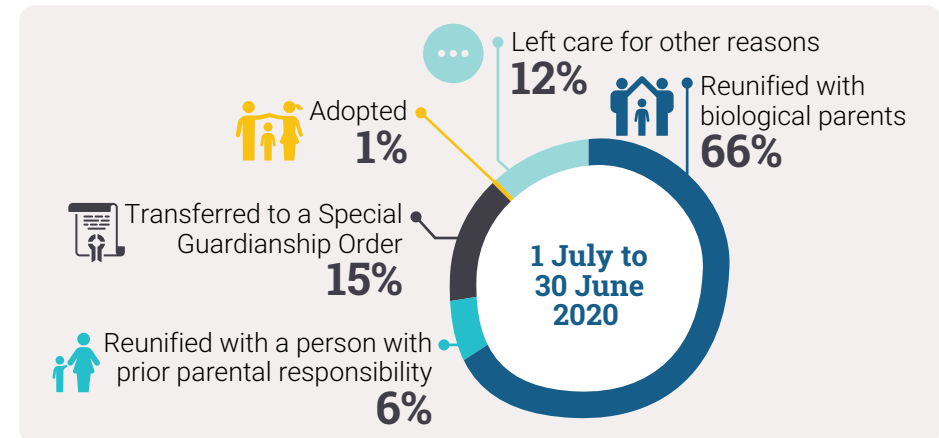
## Age of children entering care during the year



## Children and young people with complex needs, in care during the year

Service	Community sector organisations	Children
Transitional high needs	3	48
Specialised fostering	9	123
Disability placement	12	91

## Reasons why children left care\*



\*Does not include children who left care on turning 18 years of age.

# Age of children and young people upon leaving care, by district

District	Less than 1 year		1 to 4 years		5 to 9 years		10 to 14 years		15 to 17 years		18 years or older		Total
	Aboriginal	Non-Aboriginal	Aboriginal	Non-Aboriginal	Aboriginal	Non-Aboriginal	Aboriginal	Non-Aboriginal	Aboriginal	Non-Aboriginal	Aboriginal	Non-Aboriginal	
Armadale	2	2	12	14	6	14	8	12	1	6	9	9	95
Cannington	0	3	5	6	7	2	3	3	2	0	6	8	45
East Kimberley	0	0	6	0	2	0	4	0	0	0	11	0	23
Fremantle	2	2	10	6	8	8	5	7	0	4	2	6	60
Goldfields	0	0	0	3	0	1	3	0	0	0	5	0	12
Great Southern	0	1	3	6	2	4	1	9	0	2	6	3	37
Joondalup	1	1	6	11	1	12	1	12	1	6	3	4	59
Midland	2	0	10	6	6	2	2	3	1	1	10	4	47
Mid-West	1	1	6	2	10	1	6	6	0	2	3	2	40
Mirrabooka	2	3	2	3	0	10	4	8	1	1	7	10	51
Peel	1	0	3	14	0	14	2	13	1	1	1	11	61
Perth	1	0	5	0	2	3	1	2	0	1	8	14	37
Pilbara	1	0	3	0	4	3	4	1	0	1	8	0	25
Rockingham	1	2	9	20	4	14	0	12	1	3	5	14	85
South West	1	1	2	8	4	5	0	1	3	6	3	10	44
West Kimberley	0	0	0	0	3	0	3	1	2	0	9	0	18
Wheatbelt	0	1	2	10	6	10	6	3	2	2	6	2	50
Crisis Care	0	0	0	0	0	0	0	0	1	0	0	0	1
Fostering/Adoption	0	3	0	2	0	0	0	0	0	0	0	0	5
<b>Total</b>	<b>15</b>	<b>20</b>	<b>84</b>	<b>111</b>	<b>65</b>	<b>103</b>	<b>53</b>	<b>93</b>	<b>16</b>	<b>36</b>	<b>102</b>	<b>97</b>	<b>795</b>

# Children and young people who left care by length of time in care, by district

District	Less than 30 days		30 days to less than 6 months		6 months to less than 1 year		1 year to less than 2 years		2 years to less than 5 years		5 years or more		Total
	Aboriginal	Non-Aboriginal	Aboriginal	Non-Aboriginal	Aboriginal	Non-Aboriginal	Aboriginal	Non-Aboriginal	Aboriginal	Non-Aboriginal	Aboriginal	Non-Aboriginal	
Armadale	3	7	2	9	2	6	10	8	7	14	14	13	95
Cannington	3	2	0	0	0	4	0	5	10	5	10	6	45
East Kimberley	1	0	0	0	2	0	2	0	6	0	12	0	23
Fremantle	5	2	3	1	4	2	5	8	8	13	2	7	60
Goldfields	1	2	0	0	0	0	1	2	0	0	6	0	12
Great Southern	0	1	0	2	1	2	3	10	3	5	5	5	37
Joondalup	5	9	0	3	0	8	2	4	2	15	4	7	59
Midland	0	6	3	0	5	1	8	3	7	3	8	3	47
Mid-West	7	2	1	1	0	1	1	1	8	6	9	3	40
Mirrabooka	1	3	1	0	1	7	1	0	5	12	7	13	51
Peel	1	1	1	7	1	6	1	6	3	20	1	13	61
Perth	4	0	1	2	0	1	3	0	2	5	7	12	37
Pilbara	1	0	2	0	1	3	2	0	1	0	13	2	25
Rockingham	0	6	0	3	2	4	4	17	9	17	5	18	85
South West	1	3	0	1	0	4	0	1	5	12	7	10	44
West Kimberley	0	0	0	0	2	0	3	0	3	0	9	1	18
Wheatbelt	2	3	4	5	3	2	0	1	7	9	6	8	50
Crisis Care	1	0	0	0	0	0	0	0	0	0	0	0	1
Fostering/Adoption	0	0	0	3	0	2	0	0	0	0	0	0	5
<b>Total</b>	<b>36</b>	<b>47</b>	<b>18</b>	<b>37</b>	<b>24</b>	<b>53</b>	<b>46</b>	<b>66</b>	<b>86</b>	<b>136</b>	<b>125</b>	<b>121</b>	<b>795</b>

Where children have experienced more than one period of care in 2019-20, the length of time of the most recent period of care is used.

## Adoption orders granted by the Family Court or country of origin, by type of adoption

Type of adoption	2017-18	2018-19	2019-20
Adult	14	12	21
Carer	3	1	0
Inter-country	11	6	1
Local	2	5	7
Step-parent	7	7	9
<b>Total</b>	<b>37</b>	<b>31</b>	<b>38</b>

## Post-adoption information services

This data shows the number of post-adoption information services provided during the financial year.

Services	2017-18	2018-19	2019-20
Registrations where services were provided <sup>(*)</sup>	873	913	763
Provision of sensitive information	106	119	102
Duty enquiry by registered client	433	426	344
Facilitated contact between adoption parties	103	102	76
Outreach services	105	152	75
Death notifications <sup>(**)</sup>	94	155	97

\*Includes registrations made in previous years as services can be provided over time.

\*\*The Department is legislated to advise parties to an adoption about the death of other parties to the adoption.

