



Government of **Western Australia**
Department of **Communities**



Department of Communities

Child Protection Activity Performance Report 2017-2018

Contents

Child Protection Activity Performance Report 2017-2018.....	1
The year at a glance	2
Family support network clients.....	3
Intensive family support cases, by district	3
Child Protection Notifications.....	4
Action taken as a result of safety and wellbeing assessments	5
Outcome of assessed concerns	6
Outcomes of safety and wellbeing assessments, by district.....	7
Protection Applications lodged, by district.....	14
Protection Orders granted, by district.....	14
Mandatory reporting	15
Crisis Care contacts.....	16
Children and young people in care at 30 June 2018, by district.....	16
Age of children and young people in care at 30 June 2018	17
Age of children and young people in care at 30 June 2018, by district	18
Children and young people by length of time in care, by district....	19

Children and young people by length of time in care, by district....	20
Number of foster carers approved (Departmental Foster, Community Sector Foster and Family)	20
Children and young people in care at 30 June 2018 by living arrangement	21
Age of children and young people entering care during the year ...	22
Children and young people in care with complex needs	22
Age of children and young people upon leaving care, by district ...	23
Children and young people who left care by length of time in care, by district	24
Adoption orders granted by the Family Court or country of origin, by type of adoption	25
Post-adoption information services	25

Child Protection Activity Performance Report 2017-2018

This information is to be read along with the Department of Communities Annual Report 2017-2018.


In previous years this information was presented throughout the annual report of the former Department for Child Protection and Family Support.



The year at a glance


Outcome area: children and young people needing protection are safe from abuse and harm

76,945  Contacts to the Department

18,294  Child protection notifications

12,557  Safety and wellbeing assessments

1,195  Protection orders granted

46,886  Family and domestic violence incidents with and without children


3,105  Mandatory reports


Outcome area: children and young people in the Chief Executive Officer's care receive a high quality of care and have much improved life chances

5,029  Children in care

248  Children with complex needs

3,045  Foster carer households

4,096  Children in foster/family care

360  Children in residential care

2,025  Viewpoint surveys completed by children in care

Family support network clients



Family Support Network	Number of cases	Number of clients	Aboriginal clients
Armada	827	1,965	216
Fremantle	651	1,348	224
Midwest	423	973	490
Mirraboopa	425	1,045	154
Total	2,326	5,331*	1,084*

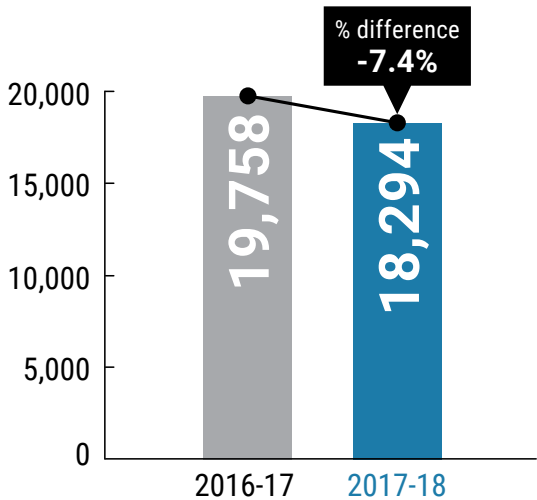
* The client count in this table is higher than the Aboriginality chart above. This discrepancy is due to clients being recorded in multiple districts.

Intensive family support cases, by district

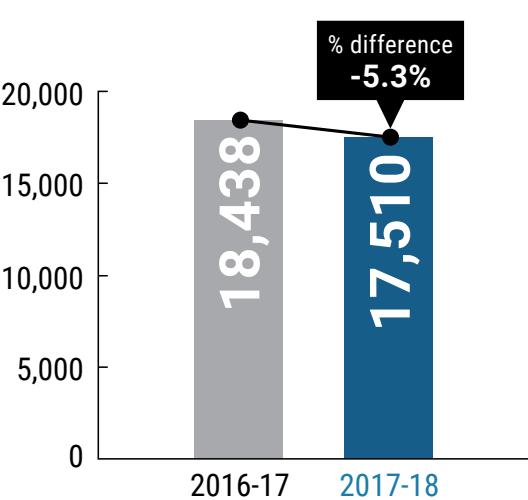
District	Cases open in 2017-18
Armada	352
Cannington	383
East Kimberley	111
Fremantle	293
Goldfields	176
Great Southern	96
Joondalup	230
Midland	351
Mirraboopa	237
Murchison	199
Peel	68
Perth	87
Pilbara	398
Rockingham	521
South West	195
West Kimberley	226
Wheatbelt	162
Total	4,085

Child Protection Notifications

Child protection notifications



No of children in child protection cases



Action taken as a result of safety and wellbeing assessments

Outcome of Safety and Wellbeing Assessment	Intervention action		Commence Family Support (s.21)		Safety issues addressed – No further action		Action Not Possible		In process		Commence IFS (s.32)		Total
	Aboriginal	Non-Aboriginal	Aboriginal	Non-Aboriginal	Aboriginal	Non-Aboriginal	Aboriginal	Non-Aboriginal	Aboriginal	Non-Aboriginal	Aboriginal	Non-Aboriginal	
Substantiated	325	353	63	110	734	1,132	35	31	5	5	876	927	4,596
Not substantiated	0	0	59	114	1,442	2,376	0	0	0	0	145	187	4,323
Other concerns assessed	0	0	4	4	37	34	0	0	0	0	8	4	91
Unable to complete assessment	0	0	0	0	0	0	371	385	0	0	0	0	756
In process	0	0	0	0	0	0	0	0	1,036	1,755	0	0	2,791
Total	325	353	126	228	2,213	3,542	406	416	1,041	1,760	1,029	1,118	12,557



Outcome of assessed concerns

Outcome of assessed concerns	Neglect		Emotional Abuse - FDV		Emotional Abuse - Other		Physical abuse		Sexual abuse		Wellbeing concerns		Total
	Aboriginal	Non-Aboriginal	Aboriginal	Non-Aboriginal	Aboriginal	Non-Aboriginal	Aboriginal	Non-Aboriginal	Aboriginal	Non-Aboriginal	Aboriginal	Non-Aboriginal	
Substantiated	354	400	333	418	155	228	153	245	115	233	0	0	2,634
Substantiated Likelihood Harm	554	493	813	731	198	391	514	549	126	251	0	0	4,620
Not Substantiated	812	1,050	612	763	334	730	771	1,389	552	1,142	0	0	8,155
No Concern	0	0	0	0	0	0	0	0	0	0	171	206	377
Concern	0	0	0	0	0	0	0	0	0	0	196	192	388
In process	351	537	358	654	127	336	261	600	228	352	42	86	3,932
Unable to complete(a)	141	150	175	142	61	87	112	97	101	146	86	44	1,342
Total	2,212	2,630	2,291	2,708	875	1,772	1,811	2,880	1,122	2,124	495	528	21,448

A safety and wellbeing assessment may identify more than one concern and the Department assesses each of these concerns individually.

(a) Refers to circumstances such as a young person's refusal to engage with the Department's worker; or when a subject child or family has relocated during an assessment and their whereabouts are unknown.

Outcomes of safety and wellbeing assessments, by district

District	Intervention action		Intensive Family Support		Family Support		Safety issues addressed		Action Not Possible		In process		Total
	Aboriginal	Non-Aboriginal	Aboriginal	Non-Aboriginal	Aboriginal	Non-Aboriginal	Aboriginal	Non-Aboriginal	Aboriginal	Non-Aboriginal	Aboriginal	Non-Aboriginal	
Armadale													
Substantiated	25	52	46	107	2	2	66	141	0	2	0	0	443
Not substantiated	0	0	5	28	1	3	108	277	0	0	0	0	422
Other concerns assessed	0	0	2	0	0	2	2	3	0	0	0	0	9
Unable to complete	0	0	0	0	0	0	0	0	8	20	0	0	28
In process	0	0	0	0	0	0	0	0	0	0	50	219	269
Total	25	52	53	135	3	7	176	421	8	22	50	219	1,171
Cannington													
Substantiated	29	16	37	51	0	1	27	50	2	3	1	0	217
Not substantiated	0	0	22	34	1	0	83	135	0	0	0	0	275
Other concerns assessed	0	0	0	0	0	0	0	2	0	0	0	0	2
Unable to complete	0	0	0	0	0	0	0	0	11	30	0	0	41
In process	0	0	0	0	0	0	0	0	0	0	59	130	189
Total	29	16	59	85	1	1	110	187	13	33	60	130	724

District	Intervention action		Intensive Family Support		Family Support		Safety issues addressed		Action Not Possible		In process		Total
	Aboriginal	Non-Aboriginal	Aboriginal	Non-Aboriginal	Aboriginal	Non-Aboriginal	Aboriginal	Non-Aboriginal	Aboriginal	Non-Aboriginal	Aboriginal	Non-Aboriginal	
East Kimberley													
Substantiated	19	0	55	0	1	0	52	3	2	0	0	0	132
Not substantiated	0	0	4	0	1	0	79	4	0	0	0	0	88
Other concerns assessed	0	0	0	0	0	0	4	0	0	0	0	0	4
Unable to complete	0	0	0	0	0	0	0	0	32	8	0	0	40
In process	0	0	0	0	0	0	0	0	0	0	50	11	61
Total	19	0	59	0	2	0	135	7	34	8	50	11	325
Fremantle													
Substantiated	29	17	73	93	6	16	19	80	1	3	0	0	337
Not substantiated	0	0	7	8	8	25	66	111	0	0	0	0	225
Other concerns assessed	0	0	0	0	0	1	1	2	0	0	0	0	4
Unable to complete	0	0	0	0	0	0	0	0	32	30	0	0	62
In process	0	0	0	0	0	0	0	0	0	0	33	63	96
Total	29	17	80	101	14	42	86	193	33	33	33	63	724
Goldfields													
Substantiated	19	4	82	33	5	0	55	25	2	0	0	0	225
Not substantiated	0	0	14	4	5	7	143	88	0	0	0	0	261
Other concerns assessed	0	0	3	1	1	0	2	1	0	0	0	0	8
Unable to complete	0	0	0	0	0	0	0	0	53	19	0	0	72
In process	0	0	0	0	0	0	0	0	0	0	44	34	78
Total	19	4	99	38	11	7	200	114	55	19	44	34	644

District	Intervention action		Intensive Family Support		Family Support		Safety issues addressed		Action Not Possible		In process		Total
	Aboriginal	Non-Aboriginal	Aboriginal	Non-Aboriginal	Aboriginal	Non-Aboriginal	Aboriginal	Non-Aboriginal	Aboriginal	Non-Aboriginal	Aboriginal	Non-Aboriginal	
Great Southern													
Substantiated	8	6	29	16	3	16	43	53	0	3	0	0	177
Not substantiated	0	0	4	0	1	4	112	206	0	0	0	0	327
Other concerns assessed	0	0	0	0	0	0	2	4	0	0	0	0	6
Unable to complete	0	0	0	0	0	0	0	0	10	25	0	0	35
In process	0	0	0	0	0	0	0	0	0	0	49	123	172
Total	8	6	33	16	4	20	157	263	10	28	49	123	717
Joondalup													
Substantiated	2	57	28	102	7	15	15	53	1	7	0	0	287
Not substantiated	0	0	0	5	6	13	45	238	0	0	0	0	307
Other concerns assessed	0	0	1	0	0	0	14	0	0	0	0	0	15
Unable to complete	0	0	0	0	0	0	0	0	9	17	0	0	26
In process	0	0	0	0	0	0	0	0	0	0	29	159	188
Total	2	57	29	107	13	28	74	291	10	24	29	159	823
Midland													
Substantiated	41	31	31	82	1	11	56	113	0	1	0	0	367
Not substantiated	0	0	3	2	1	3	92	158	0	0	0	0	259
Other concerns assessed	0	0	0	0	0	1	0	0	0	0	0	0	1
Unable to complete	0	0	0	0	0	0	0	0	10	9	0	0	19
In process	0	0	0	0	0	0	0	0	0	0	81	129	210
Total	41	31	34	84	2	15	148	271	10	10	81	129	856

District	Intervention action		Intensive Family Support		Family Support		Safety issues addressed		Action Not Possible		In process		Total
	Aboriginal	Non-Aboriginal	Aboriginal	Non-Aboriginal	Aboriginal	Non-Aboriginal	Aboriginal	Non-Aboriginal	Aboriginal	Non-Aboriginal	Aboriginal	Non-Aboriginal	
Mirrabooka													
Substantiated	19	22	36	65	0	2	45	87	10	6	0	0	292
Not substantiated	0	0	13	11	1	2	71	174	0	0	0	0	272
Other concerns assessed	0	0	0	0	1	0	2	10	0	0	0	0	13
Unable to complete	0	0	0	0	0	0	0	0	8	18	0	0	26
In process	0	0	0	0	0	0	0	0	0	0	22	95	117
Total	19	22	49	76	2	4	118	271	18	24	22	95	720
Murchison													
Substantiated	15	5	97	14	6	0	57	24	2	0	1	0	221
Not substantiated	0	0	7	7	7	3	162	86	0	0	0	0	272
Other concerns assessed	0	0	0	0	0	0	4	3	0	0	0	0	7
Unable to complete	0	0	0	0	0	0	0	0	28	11	0	0	39
In process	0	0	0	0	0	0	0	0	0	0	121	46	167
Total	15	5	104	21	13	3	223	113	30	11	122	46	706
Peel													
Substantiated	4	22	2	14	0	8	33	86	1	0	0	0	170
Not substantiated	0	0	0	0	0	3	17	116	0	0	0	0	136
Other concerns assessed	0	0	0	0	0	0	1	2	0	0	0	0	3
Unable to complete	0	0	0	0	0	0	0	0	22	35	0	0	57
In process	0	0	0	0	0	0	0	0	0	0	57	153	210
Total	4	22	2	14	0	11	51	204	23	35	57	153	576

District	Intervention action		Intensive Family Support		Family Support		Safety issues addressed		Action Not Possible		In process		Total
	Aboriginal	Non-Aboriginal	Aboriginal	Non-Aboriginal	Aboriginal	Non-Aboriginal	Aboriginal	Non-Aboriginal	Aboriginal	Non-Aboriginal	Aboriginal	Non-Aboriginal	
Perth													
Substantiated	10	12	9	24	7	12	11	25	1	0	0	0	111
Not substantiated	0	0	1	4	9	19	38	133	0	0	0	0	204
Other concerns assessed	0	0	0	1	0	0	0	0	0	0	0	0	1
Unable to complete	0	0	0	0	0	0	0	0	8	14	0	0	22
In process	0	0	0	0	0	0	0	0	0	0	27	69	96
Total	10	12	10	29	16	31	49	158	9	14	27	69	434
Pilbara													
Substantiated	22	1	142	7	13	2	84	27	7	0	0	0	305
Not substantiated	0	0	29	8	5	6	159	34	0	0	0	0	241
Other concerns assessed	0	0	1	0	1	0	3	0	0	0	0	0	5
Unable to complete	0	0	0	0	0	0	0	0	60	41	0	0	101
In process	0	0	0	0	0	0	0	0	0	0	206	57	263
Total	22	1	172	15	19	8	246	61	67	41	206	57	915
Rockingham													
Substantiated	30	58	73	239	2	9	41	165	0	4	0	3	624
Not substantiated	0	0	14	54	1	10	62	362	0	0	0	0	503
Other concerns assessed	0	0	0	2	0	0	1	6	0	0	0	0	9
Unable to complete	0	0	0	0	0	0	0	0	23	40	0	0	63
In process	0	0	0	0	0	0	0	0	0	0	17	136	153
Total	30	58	87	295	3	19	104	533	23	44	17	139	1,352

District	Intervention action		Intensive Family Support		Family Support		Safety issues addressed		Action Not Possible		In process		Total
	Aboriginal	Non-Aboriginal	Aboriginal	Non-Aboriginal	Aboriginal	Non-Aboriginal	Aboriginal	Non-Aboriginal	Aboriginal	Non-Aboriginal	Aboriginal	Non-Aboriginal	
South West													
Substantiated	9	31	24	49	0	4	21	101	0	2	0	0	241
Not substantiated	0	0	2	12	1	9	28	115	0	0	0	0	167
Other concerns assessed	0	0	0	0	0	0	0	0	0	0	0	0	0
Unable to complete	0	0	0	0	0	0	0	0	12	45	0	0	57
In process	0	0	0	0	0	0	0	0	0	0	61	195	256
Total	9	31	26	61	1	13	49	216	12	47	61	195	721
West Kimberley													
Substantiated	22	0	95	0	3	0	82	11	6	0	1	2	222
Not substantiated	0	0	8	0	6	0	120	11	0	0	0	0	145
Other concerns assessed	0	0	0	0	0	0	0	0	0	0	0	0	0
Unable to complete	0	0	0	0	0	0	0	0	22	1	0	0	23
In process	0	0	0	0	0	0	0	0	0	0	73	18	91
Total	22	0	103	0	9	0	202	22	28	1	74	20	481
Wheatbelt													
Substantiated	22	19	17	31	7	12	15	42	0	0	2	0	167
Not substantiated	0	0	3	8	5	7	57	114	0	0	0	0	194
Other concerns assessed	0	0	1	0	1	0	1	1	0	0	0	0	4
Unable to complete	0	0	0	0	0	0	0	0	15	15	0	0	30
In process	0	0	0	0	0	0	0	0	0	0	57	116	173
Total	22	19	21	39	13	19	73	157	15	15	59	116	568

District	Intervention action		Intensive Family Support		Family Support		Safety issues addressed		Action Not Possible		In process		Total
	Aboriginal	Non-Aboriginal	Aboriginal	Non-Aboriginal	Aboriginal	Non-Aboriginal	Aboriginal	Non-Aboriginal	Aboriginal	Non-Aboriginal	Aboriginal	Non-Aboriginal	
Other work units													
Substantiated	0	0	0	0	0	0	0	0	0	0	0	0	0
Not substantiated	0	0	0	0	0	0	0	1	0	0	0	0	1
Other concerns assessed	0	0	0	0	0	0	0	0	0	0	0	0	0
Unable to complete	0	0	0	0	0	0	0	0	0	0	0	0	0
In process	0	0	0	0	0	0	0	0	0	0	0	1	1
Total	0	0	0	0	0	0	0	1	0	0	0	1	2
Total	325	353	1,029	1,118	126	228	2,213	3,542	406	416	1,041	1,760	12,557



Protection Applications lodged, by district

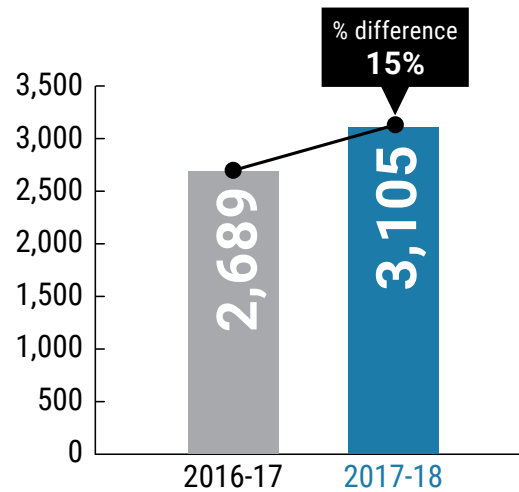
District	Applications for Aboriginal children	Applications for Non-Aboriginal children
Armadale	57	80
Cannington	54	48
East Kimberley	34	0
Fremantle	48	40
Goldfields	23	5
Great Southern	16	15
Joondalup	20	97
Midland	72	57
Mirrabooka	39	50
Murchison	51	24
Peel	35	57
Perth	12	29
Pilbara	44	4
Rockingham	32	96
South West	23	57
West Kimberley	64	0
Wheatbelt	49	37
Other Work Units	6	2
Total	679	698

Protection Orders granted, by district

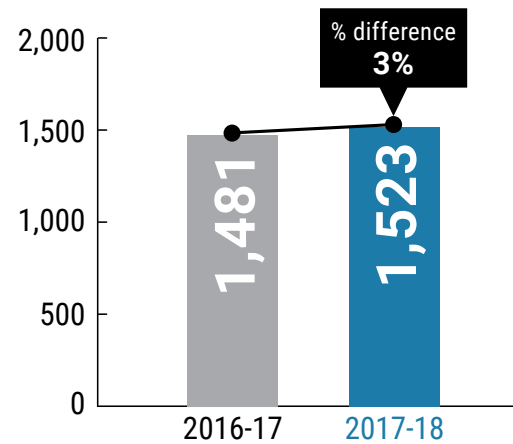
District	Orders granted for Aboriginal children	Orders granted for Non-Aboriginal children
Armadale	55	67
Cannington	55	51
East Kimberley	38	0
Fremantle	50	40
Goldfields	22	5
Great Southern	7	14
Joondalup	28	43
Midland	59	59
Mirrabooka	36	42
Murchison	30	9
Peel	24	51
Perth	19	19
Pilbara	51	4
Rockingham	20	68
South West	18	80
West Kimberley	71	0
Wheatbelt	37	23
Other Work Units	0	0
Total	620	575

Mandatory reporting

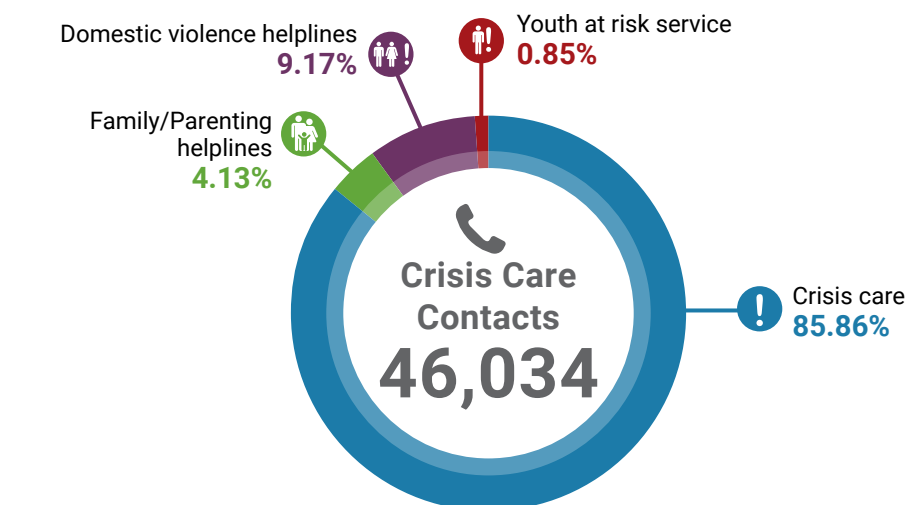
Mandatory reports



New safety and wellbeing assessments from Mandatory reports



Crisis Care contacts

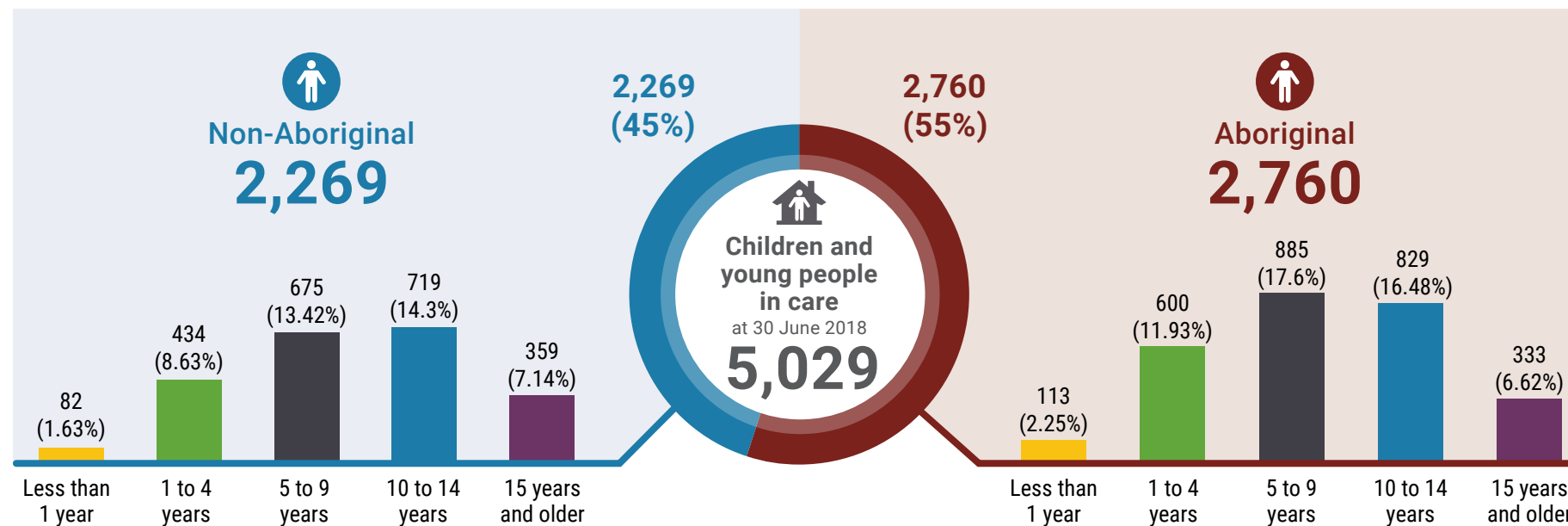


- 39,524** Crisis care
- 1,899** Family/Parenting helplines
- 4,221** Domestic violence helplines
- 390** Youth at risk service

Children and young people in care at 30 June 2018, by district

District	Aboriginal	Non-Aboriginal	Total
Armadale	288	242	530
Cannington	244	190	434
East Kimberley	157	0	157
Fremantle	161	141	302
Goldfields	117	25	142
Great Southern	100	67	167
Joondalup	114	214	328
Midland	231	210	441
Mirrabooka	182	185	367
Murchison	219	43	262
Peel	75	192	267
Perth	105	157	262
Pilbara	181	12	193
Rockingham	104	274	378
South West	131	199	330
West Kimberley	178	1	179
Wheatbelt	171	99	270
Fostering/ Adoption	2	18	20
Total	2,760	2,269	5,029

Age of children and young people in care at 30 June 2018



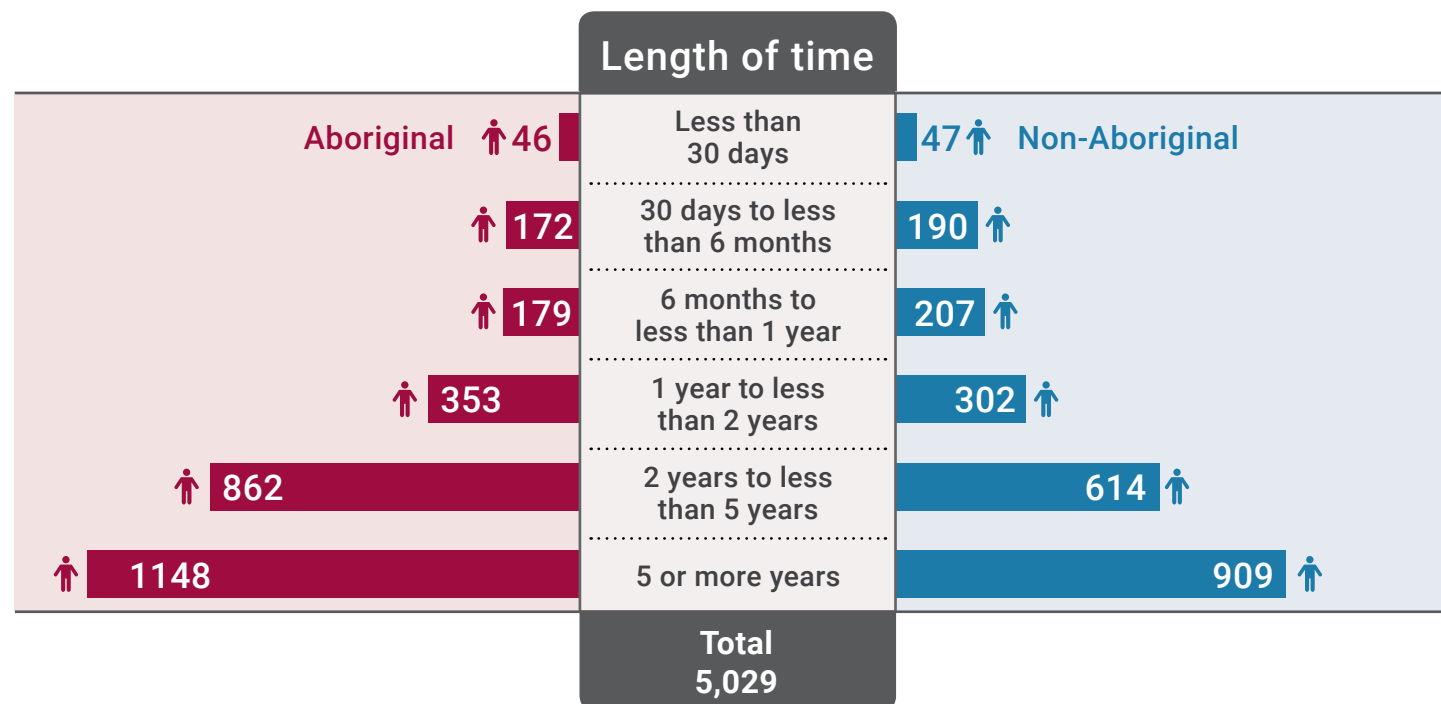
Age of children and young people in care at 30 June 2018, by district

District	Less than 1 year		1 to 4 years		5 to 9 years		10 to 14 years		15 years and older		Total
	Aboriginal	Non-Aboriginal	Aboriginal	Non-Aboriginal	Aboriginal	Non-Aboriginal	Aboriginal	Non-Aboriginal	Aboriginal	Non-Aboriginal	
Armadale	10	10	51	46	100	66	86	77	41	43	530
Cannington	14	7	60	34	84	53	57	72	29	24	434
East Kimberley	6	0	29	0	53	0	49	0	20	0	157
Fremantle	10	4	31	27	50	38	56	42	14	30	302
Goldfields	8	1	18	7	38	9	39	5	14	3	142
Great Southern	6	1	21	9	28	19	30	25	15	13	167
Joondalup	3	7	17	49	42	64	38	70	14	24	328
Midland	8	5	65	33	67	69	62	73	29	30	441
Mirrabooka	4	5	41	30	58	54	60	57	19	39	367
Murchison	6	1	51	8	84	16	67	14	11	4	262
Peel	2	8	13	40	25	47	25	66	10	31	267
Perth	6	1	26	32	28	49	29	47	16	28	262
Pilbara	8	1	48	4	46	2	53	2	26	3	193
Rockingham	9	11	21	57	27	102	30	71	17	33	378
South West	3	10	22	27	47	57	45	71	14	34	330
West Kimberley	6	0	44	0	47	0	55	1	26	0	179
Wheatbelt	3	3	41	25	61	28	48	25	18	18	270
Fostering/ Adoption	1	7	1	6	0	2	0	1	0	2	20
Total	113	82	600	434	885	675	829	719	333	359	5,029

Children and young people by length of time in care, by district

District	Less than 30 days		30 days to less than 6 months		6 months to less than 1 year		1 year to less than 2 years		2 years to less than 5 years		5 years or more		Total
	Aboriginal	Non-Aboriginal	Aboriginal	Non-Aboriginal	Aboriginal	Non-Aboriginal	Aboriginal	Non-Aboriginal	Aboriginal	Non-Aboriginal	Aboriginal	Non-Aboriginal	
Armadale	0	5	19	16	10	32	28	22	87	73	144	94	530
Cannington	5	3	12	7	18	12	28	30	76	55	105	83	434
East Kimberley	0	0	7	0	14	0	23	0	58	0	55	0	157
Fremantle	6	3	12	5	14	16	26	15	39	49	64	53	302
Goldfields	3	0	12	2	8	2	7	5	19	9	68	7	142
Great Southern	1	0	7	1	2	6	8	12	33	24	49	24	167
Joondalup	1	3	2	31	4	33	15	15	34	60	58	72	328
Midland	2	7	14	25	29	13	22	29	61	49	103	87	441
Mirrabooka	0	6	11	7	9	20	36	22	52	36	74	94	367
Murchison	5	0	8	1	12	4	28	0	85	18	81	20	262
Peel	2	1	8	19	4	16	12	35	24	35	25	86	267
Perth	3	2	7	7	3	8	7	15	43	38	42	87	262
Pilbara	2	0	10	0	8	1	29	2	64	6	68	3	193
Rockingham	2	10	16	36	5	12	24	45	19	73	38	98	378
South West	2	3	7	14	11	15	9	44	37	50	65	73	330
West Kimberley	12	0	8	0	16	0	20	0	61	0	61	1	179
Wheatbelt	0	3	11	11	12	14	30	8	70	36	48	27	270
Fostering/ Adoption	0	1	1	8	0	3	1	3	0	3	0	0	20
Total	46	47	172	190	179	207	353	302	862	614	1,148	909	5,029

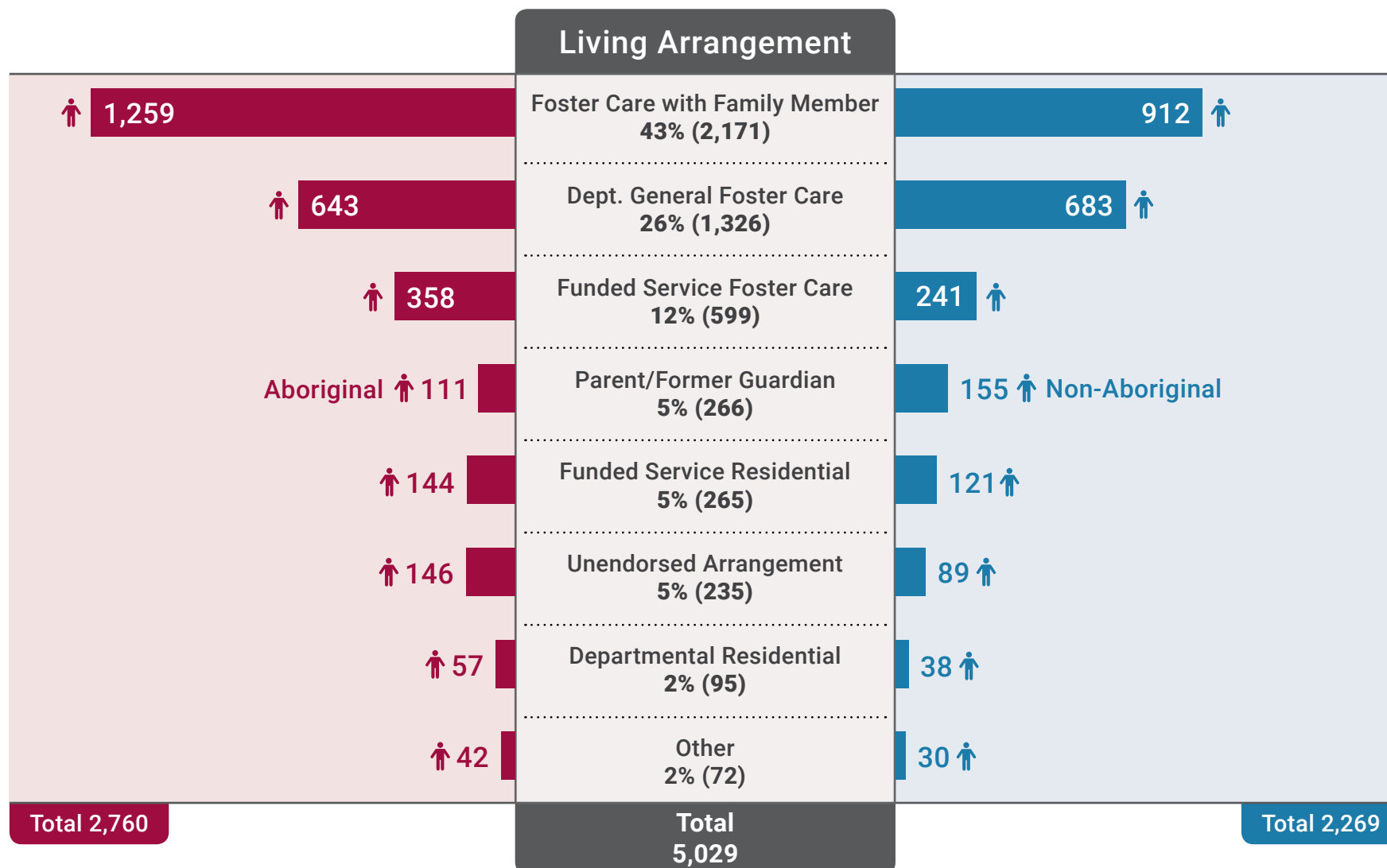
Children and young people by length of time in care, by district



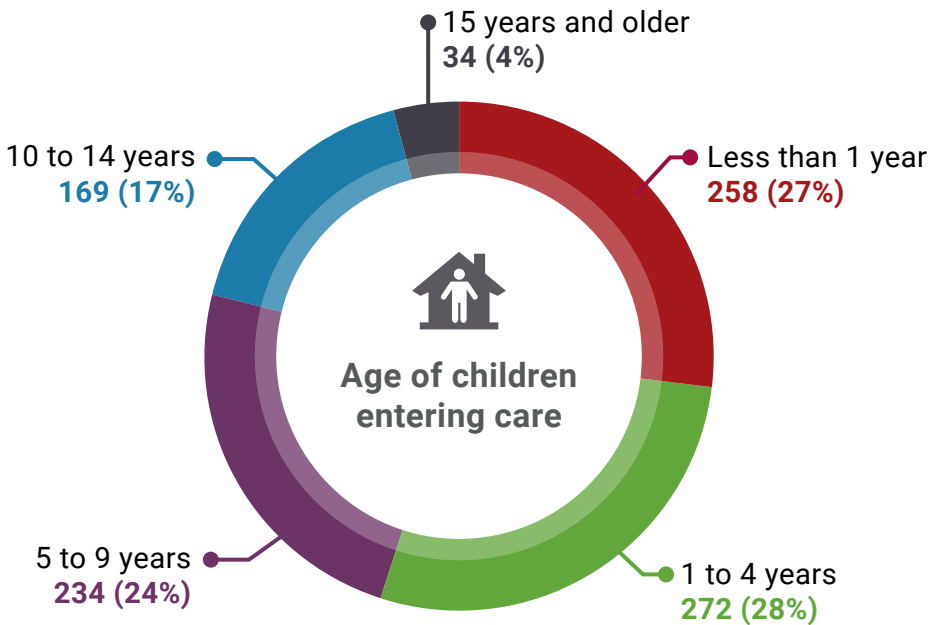
Number of foster carers approved (Departmental Foster, Community Sector Foster and Family)

At 30 June 2018	Aboriginal	Non-Aboriginal	Total
Approved Departmental Foster Carers	51	898	949
Approved Community Organisation Foster Carers	64	608	672
Approved Departmental Family Carers	524	900	1424
Total	639	2,406	3,045

Children and young people in care at 30 June 2018 by living arrangement



Age of children and young people entering care during the year



Children and young people in care with complex needs

Service	Community sector organisations	Children
Transitional high needs	1	46
Specialised fostering	9	122
Disability placement	11	80



Age of children and young people upon leaving care, by district

District	Less than 1 year		1 to 4 years		5 to 9 years		10 to 14 years		15 to 17 years		18 years or older		Total
	Aboriginal	Non-Aboriginal	Aboriginal	Non-Aboriginal	Aboriginal	Non-Aboriginal	Aboriginal	Non-Aboriginal	Aboriginal	Non-Aboriginal	Aboriginal	Non-Aboriginal	
Armadale	1	4	2	11	6	25	4	5	2	3	8	12	83
Cannington	0	2	4	10	2	9	2	4	0	0	3	8	44
Crisis Care	0	0	0	0	0	0	0	0	0	1	0	0	1
East Kimberley	2	0	11	0	5	0	5	0	1	0	3	0	27
Fremantle	0	2	4	8	7	6	0	3	0	0	4	8	42
Goldfields	1	0	2	4	2	2	2	5	2	2	5	1	28
Great Southern	0	1	0	6	0	4	2	4	0	2	3	11	33
Joondalup	0	1	4	10	5	8	4	2	0	3	2	8	47
Midland	0	1	5	7	3	8	2	4	2	2	3	5	42
Mirrabooka	0	0	1	8	3	3	2	0	1	2	5	10	35
Murchison	3	0	4	0	4	2	1	1	1	0	3	2	21
Peel	0	1	0	3	1	9	0	4	2	2	3	9	34
Perth	1	2	3	1	0	3	0	6	0	3	5	7	31
Pilbara	1	0	11	4	10	2	6	1	1	0	6	0	42
Rockingham	1	1	6	11	2	8	1	10	0	3	1	9	53
South West	2	1	4	4	2	10	4	7	0	1	3	7	45
West Kimberley	3	0	7	0	14	0	8	0	2	0	7	0	41
Wheatbelt	2	0	4	3	3	3	3	1	2	2	6	4	33
Fostering/ Adoption	1	1	0	1	0	0	0	0	0	0	0	0	3
Total	18	17	72	91	69	102	46	57	16	26	70	101	685

Children and young people who left care by length of time in care, by district

District	Less than 30 days		30 days to less than 6 months		6 months to less than 1 year		1 year to less than 2 years		2 years to less than 5 years		5 years or more		Total
	Aboriginal	Non-Aboriginal	Aboriginal	Non-Aboriginal	Aboriginal	Non-Aboriginal	Aboriginal	Non-Aboriginal	Aboriginal	Non-Aboriginal	Aboriginal	Non-Aboriginal	
Armadale	6	5	2	7	0	12	2	2	5	19	8	15	83
Cannington	1	3	0	1	0	3	3	7	3	12	4	7	44
Crisis Care	0	1	0	0	0	0	0	0	0	0	0	0	1
East Kimberley	7	0	2	0	2	0	7	0	6	0	3	0	27
Fremantle	0	1	1	1	5	1	0	4	2	9	7	11	42
Goldfields	1	7	0	0	4	3	0	2	1	1	8	1	28
Great Southern	2	0	0	1	0	5	0	1	0	12	3	9	33
Joondalup	1	2	1	0	0	3	2	5	6	10	5	12	47
Midland	0	7	1	4	0	0	8	1	3	6	3	9	42
Mirrabooka	1	4	1	2	0	0	1	2	3	4	6	11	35
Murchison	2	1	1	0	2	1	0	1	5	0	6	2	21
Peel	0	6	0	1	0	2	0	0	2	9	4	10	34
Perth	1	4	1	4	0	1	1	0	3	5	3	8	31
Pilbara	2	3	2	0	3	0	5	1	16	3	7	0	42
Rockingham	1	4	1	4	2	8	3	7	3	10	1	9	53
South West	2	5	0	5	1	0	1	0	3	7	8	13	45
West Kimberley	9	0	3	0	5	0	7	0	8	0	9	0	41
Wheatbelt	0	1	3	0	2	1	4	1	7	6	4	4	33
Fostering/ Adoption	1	1	0	0	0	1	0	0	0	0	0	0	3
Total	37	55	19	30	26	41	44	34	76	113	89	121	685

Where children have experienced more than one period of care in 2017-18, the length of time of the most recent period of care is used.

Adoption orders granted by the Family Court or country of origin, by type of adoption

Type of adoption	2017-18
Adult	14
Carer	3
InterCountry	11
Local	2
Step-parent	7
Total	37

Post-adoption information services

This data shows the number of post-adoption information services provided during the financial year.

Services	2017-18
Registrations where services were provided(a)	873
Provision of sensitive information	106
Duty enquiry by registered client	433
Facilitated contact between adoption parties	103
Outreach services	105
Death notifications(b)	94

(a) Includes registrations made in previous years as services can be provided over time.

(b) The Department is legislated to advise parties to an adoption about the death of other parties to the adoption.