



Murdoch

Specialised Activity Centre

Draft Structure Plan

November 2012



Department of
Planning



Western
Australian
Planning
Commission



City of
Melville



Murdoch
UNIVERSITY



MURDOCH SPECIALISED ACTIVITY CENTRE

Community Briefing on the Draft Structure Plan 21 Nov 2012



Department of
Planning



Western
Australian
Planning
Commission



City of
Melville



Murdoch
UNIVERSITY



Tonight's agenda

6.15pm Structure Plan Project Update

6.20pm Presentation of the Draft Structure Plan

6.40pm How to Comment on the Plan

6.45pm Questions from the Floor



Purpose of the briefing

Presentation of the Plan

1. Provide an overview of the draft Structure Plan
2. Remind you about what the community has said
3. Demonstrate where community ideas have been incorporated
4. Highlight where feedback has not been incorporated



Purpose of Tonight

How to Comment on the Plan

1. Where to find the Draft Structure Plan
2. How to make a formal submission
3. What happens to your feedback
4. Any queries



Project Update

Current situation...







Project Objectives

Prepare a Structure Plan to guide development of the Activity Centre over the next 20 years:-

1. Lay the foundations for one of the largest employment centres outside Perth CBD
2. Builds on the unique potential of the specialised core activities located at Murdoch
3. Create an attractive urban environment and transport network which facilitates new activity and supports growth

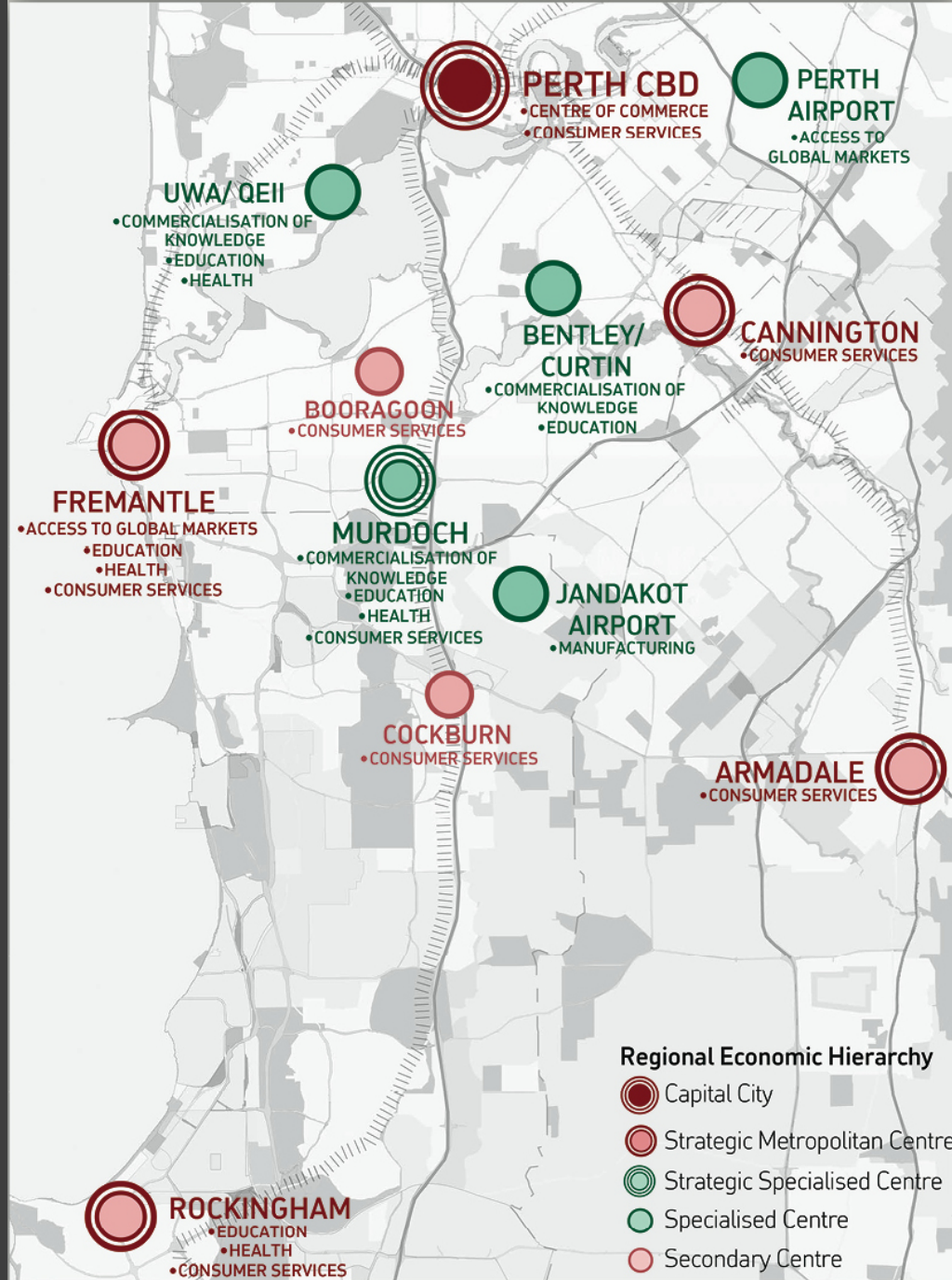


Figure 2.05: Potential future centre hierarchy
(based on amended map from *Directions 2031 and Beyond*)



Other State Projects

Projects which fall outside the scope of this Structure Plan

- Fiona Stanley Hospital
- Proposed extension to Roe Highway
- Main Roads upgrades/Kwinana Freeway

Structure Plan Area





Proposed Developments and Masterplanning

Projects in progress which fall within the scope of the Structure Plan

1. St John of God Hospital
2. Murdoch University – Eastern Precinct
3. Challenger Institute of Technology
4. Murdoch Mixed Use Precinct



Areas of Focus

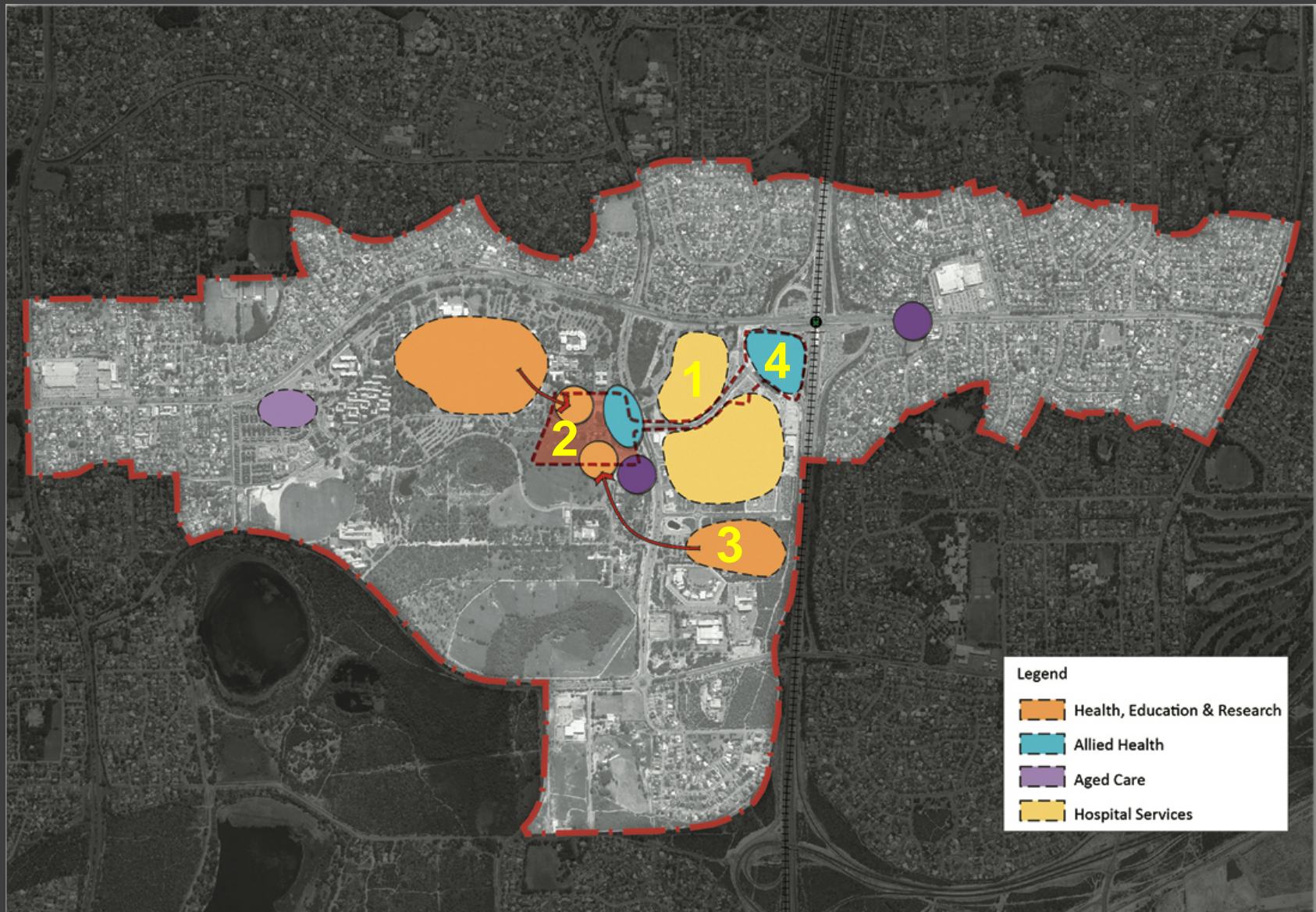
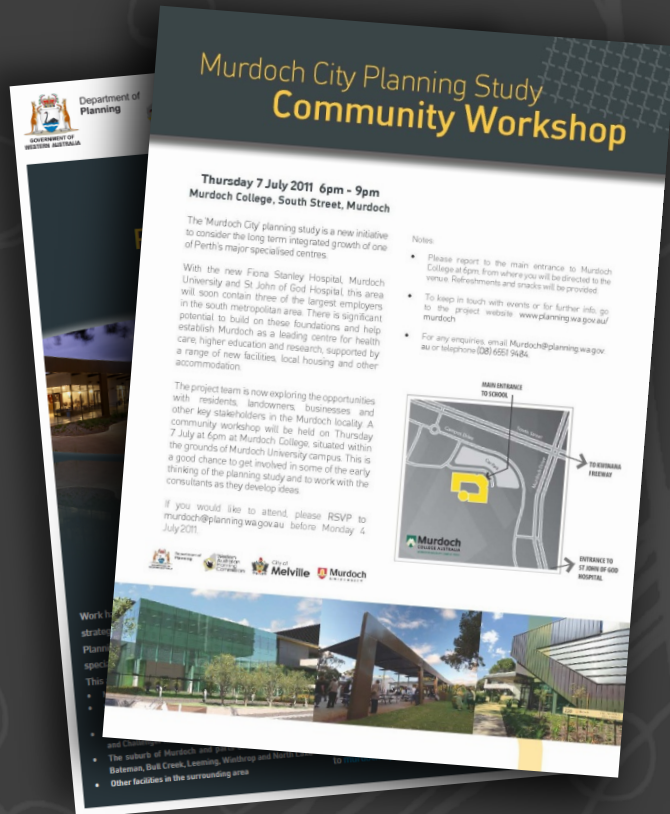


Figure 3.06: Proposed principal health, education and research zones



Community engagement



We are Here

Community Forum 1



Community Forum 2



Technical Workshops
to resolve 1 Plan
Prepare draft structure
plan for advertising



Community Forum 3



Formal Submissions



Community workshop (July 2011)



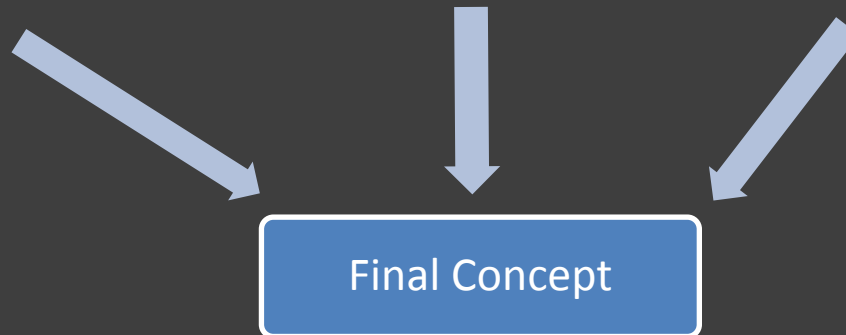
Connected Murdoch



Creative Murdoch



Organic Murdoch



Final Concept



Murdoch - community issues

Topics

- Public Transport
- Residential Development
- Population growth
- Traffic congestion
- Social and Community Impacts
- Car Parking
- Natural Environment

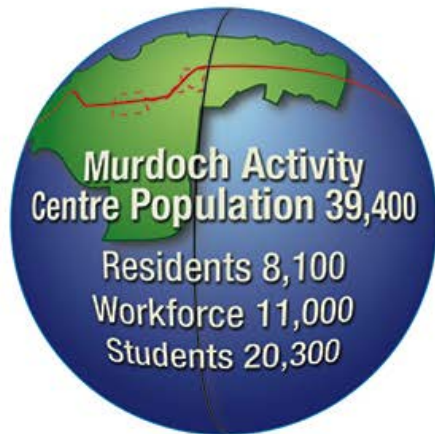


Murdoch Specialised Activity Centre

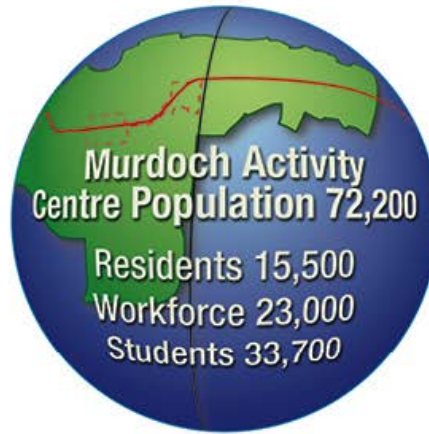
Draft Structure Plan...



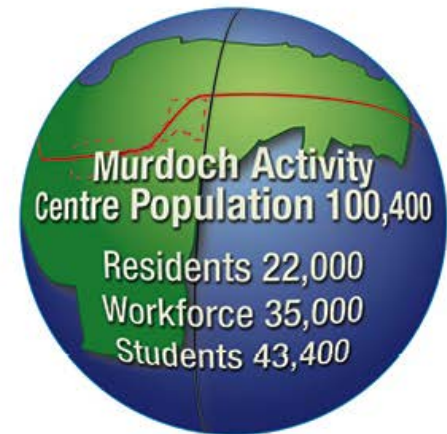
Growth of the Activity Centre



Existing



Interim



Optimal

Figure 2.02: Population scenarios for Murdoch Activity Centre

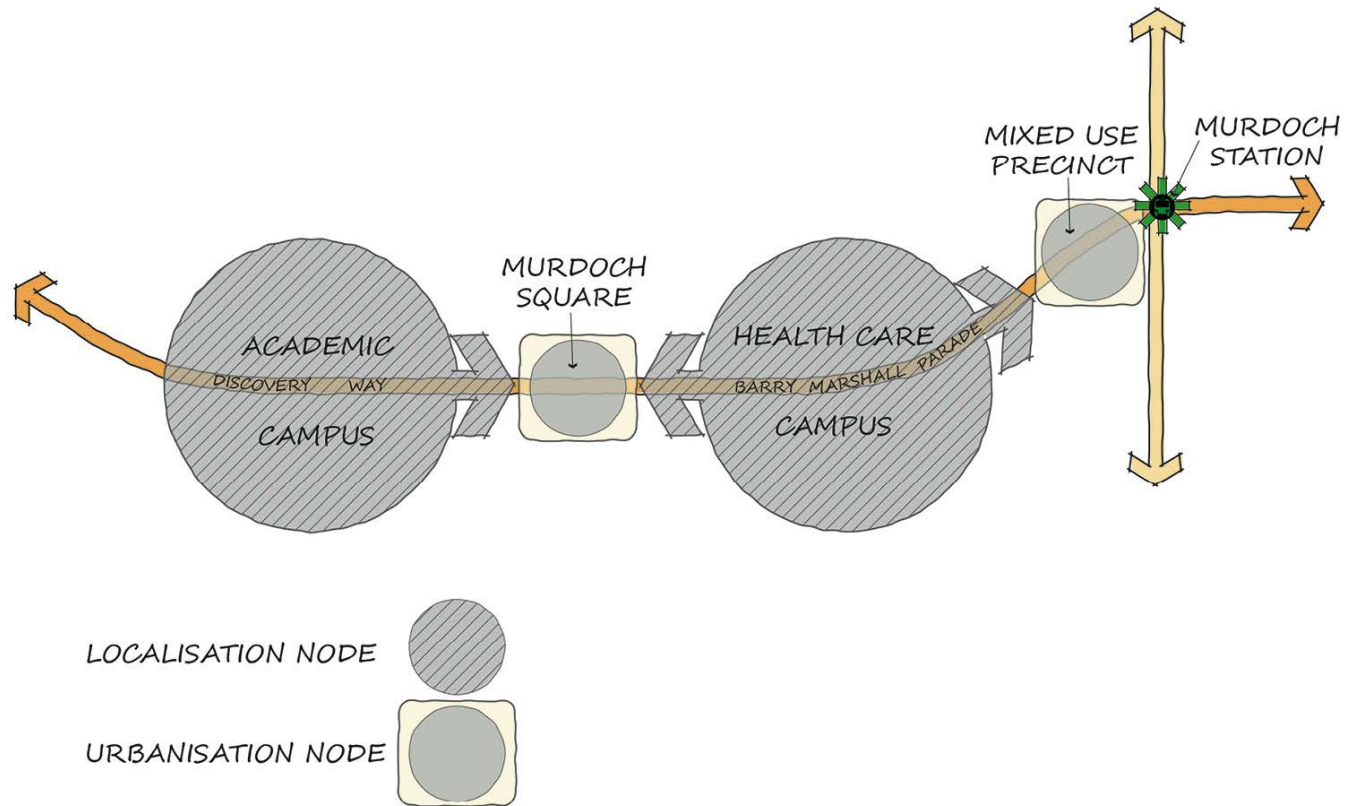


Figure 2.06: Urbanisation nodes to support the specialised activity (or localisation) nodes

Murdoch – urban core



Figure 5.24: Murdoch Square perspective (looking west along Discovery Way)

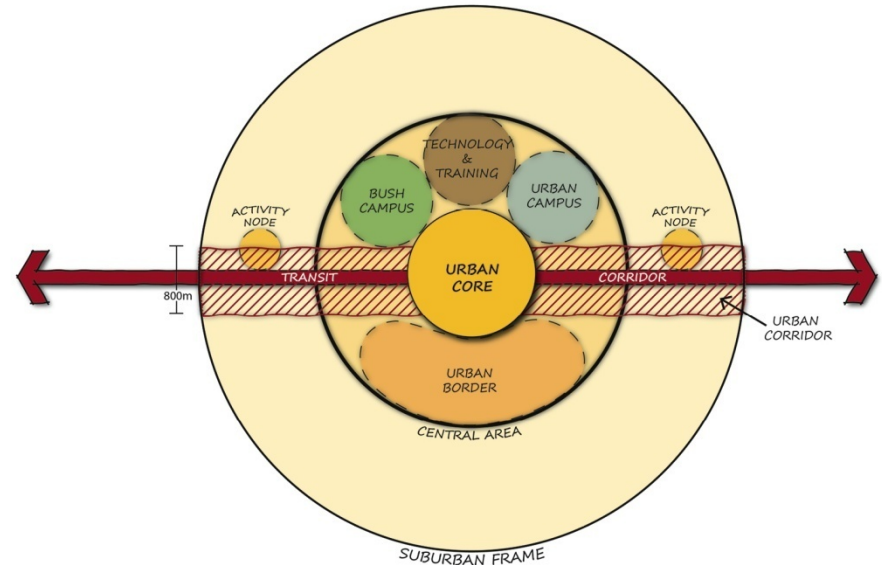


Figure 5.03: Urban form concept diagram

Transit Corridor

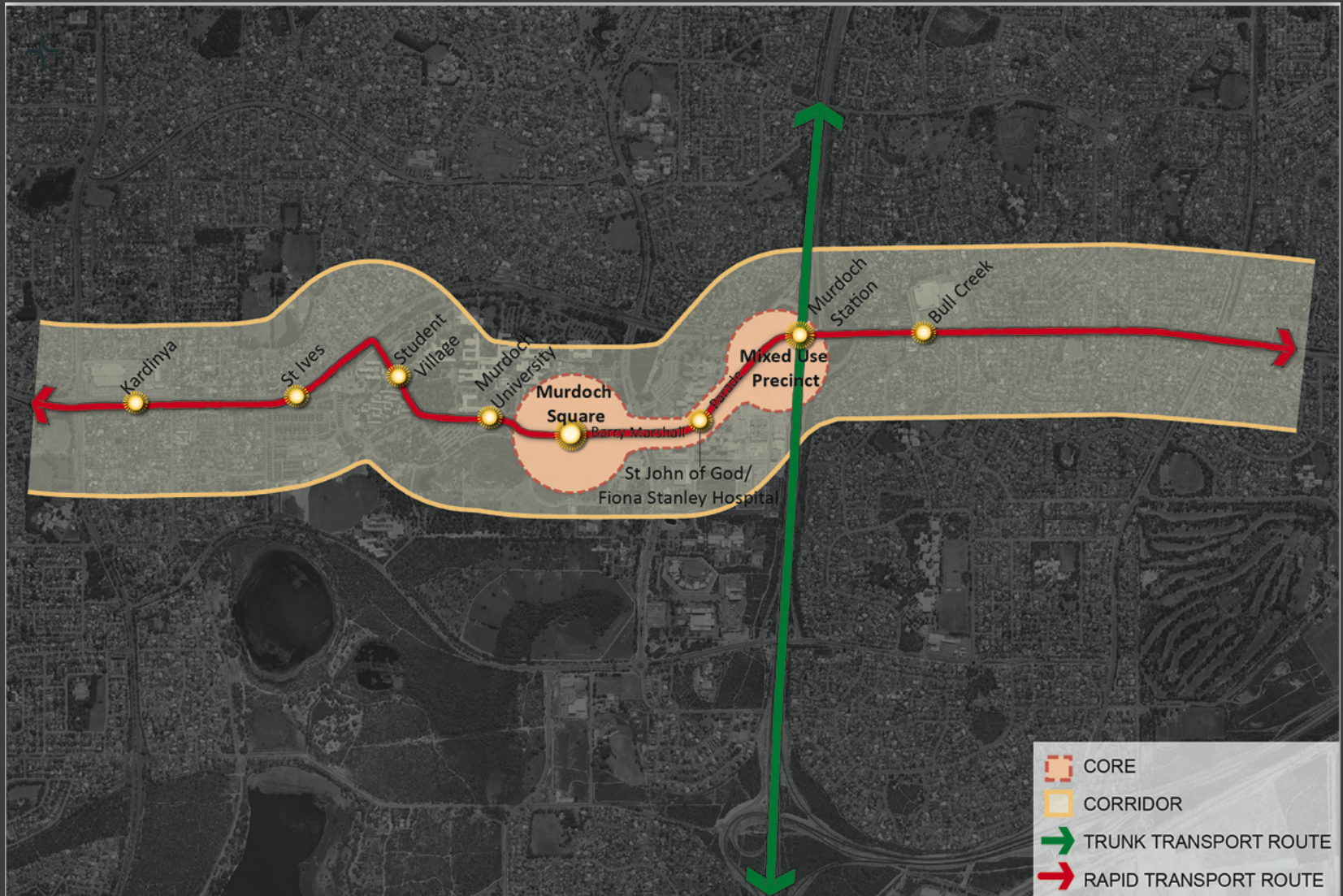


Figure 2.11: Urban corridor



Precinct Structure

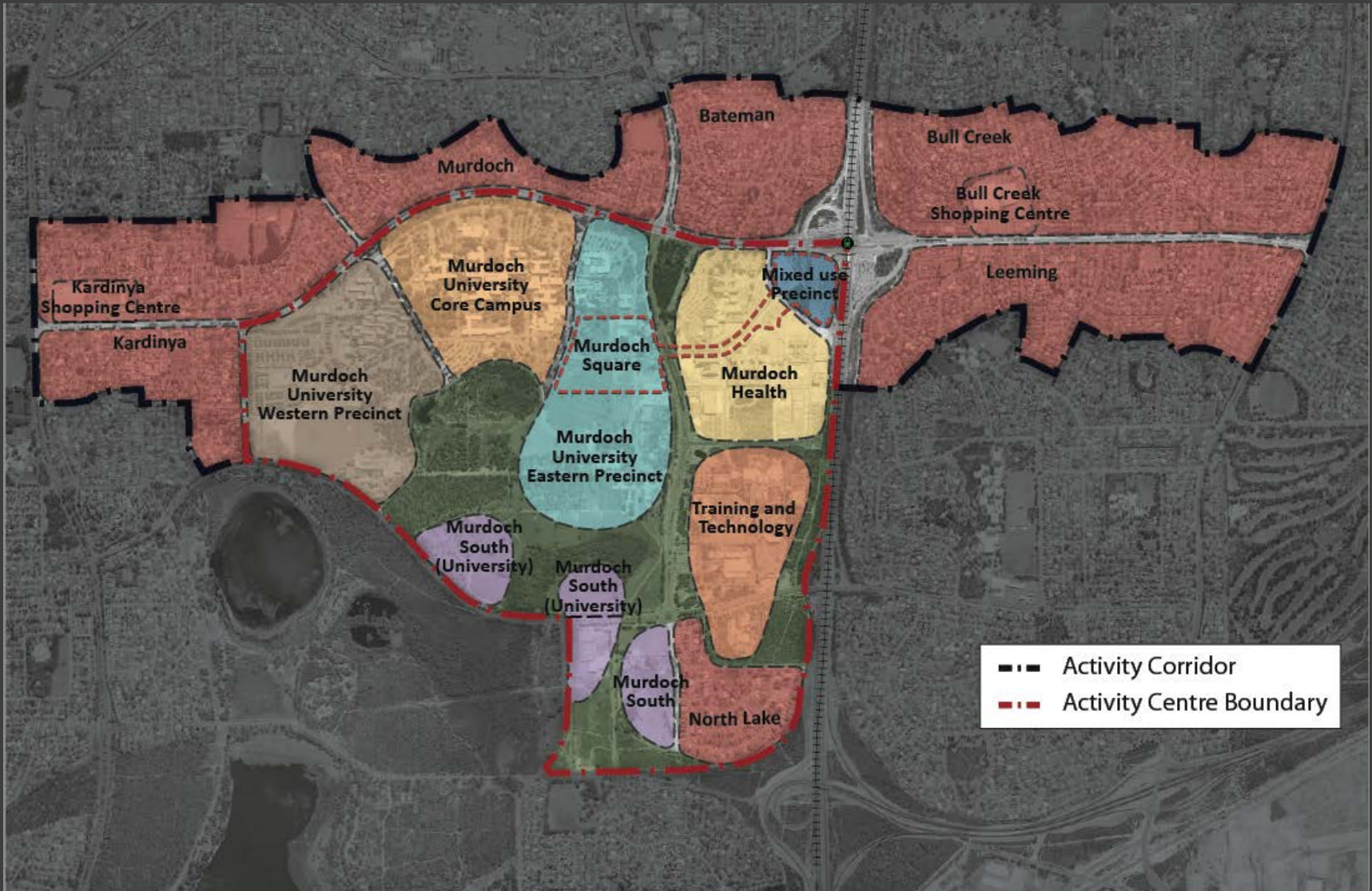


Figure 2.18: Activity centre precinct areas

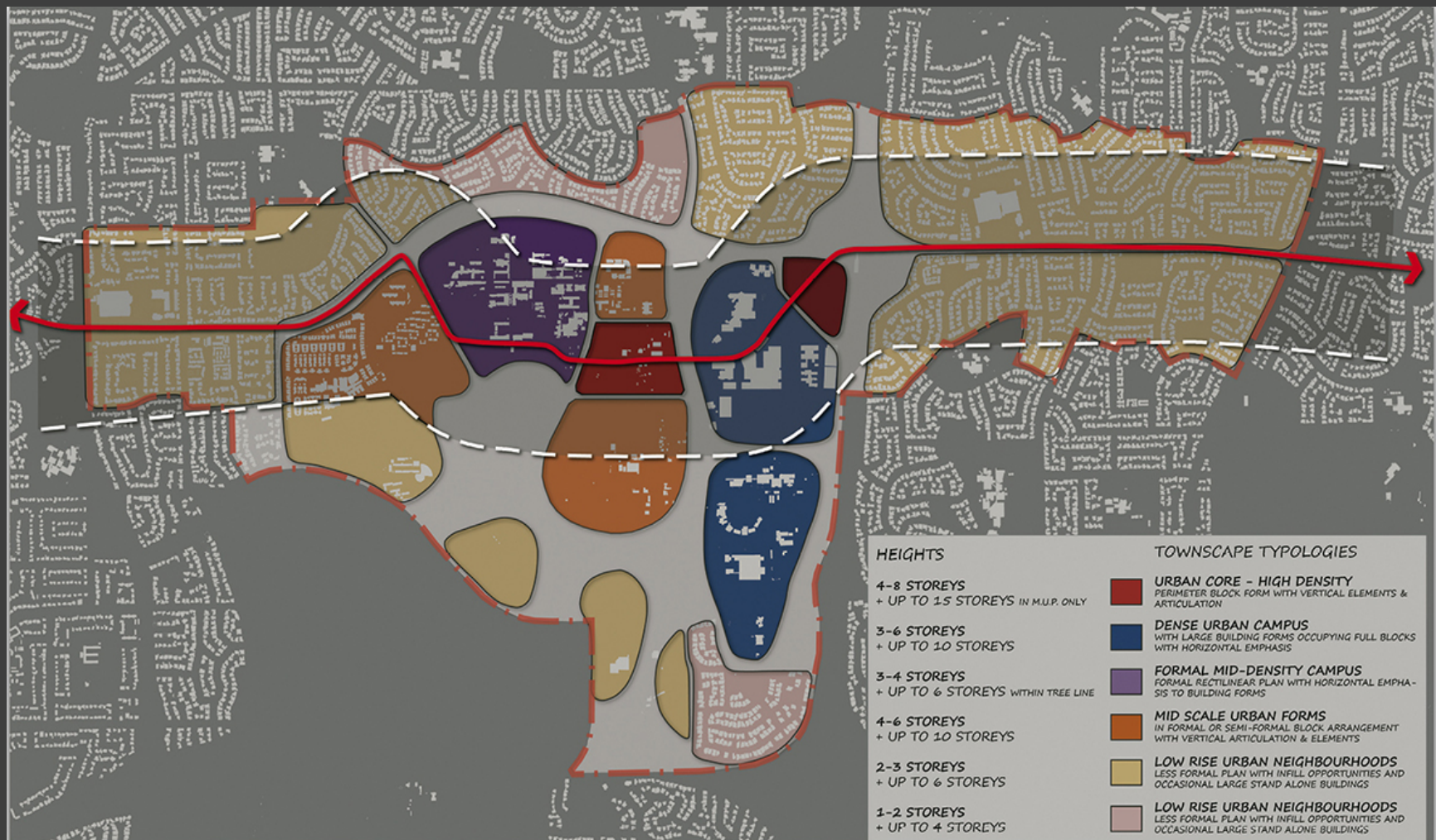


Figure 5.15: Precinct character guidelines

Murdoch Landscape



Figure 6.11: Murdoch landscape frame concept



Murdoch Connections

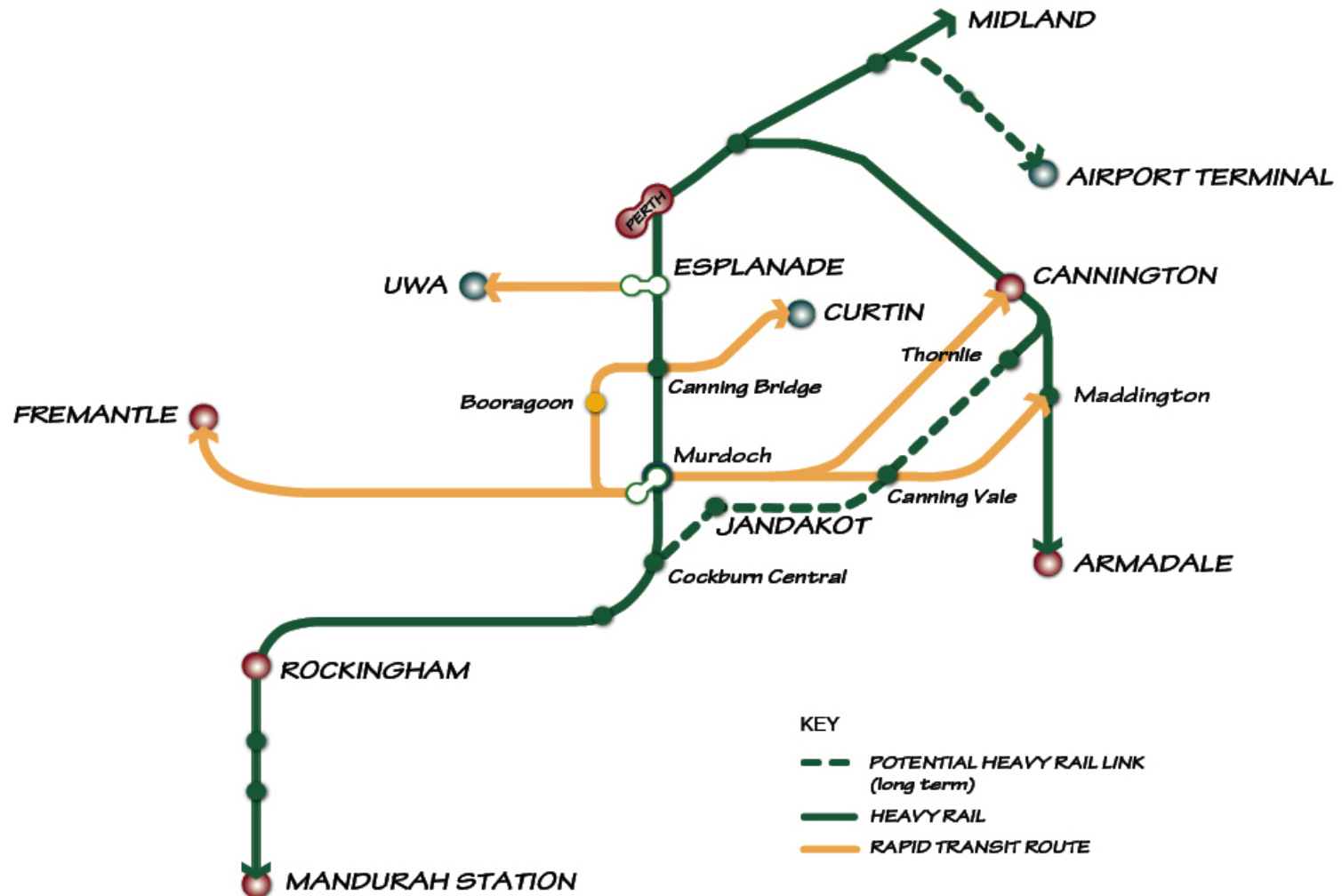


Figure 4.01: Proposed regional transit (optimal network connections to Murdoch)

Note: this diagram is based on, and is not an extract from, *The Draft Public Transport for Perth in 2031*

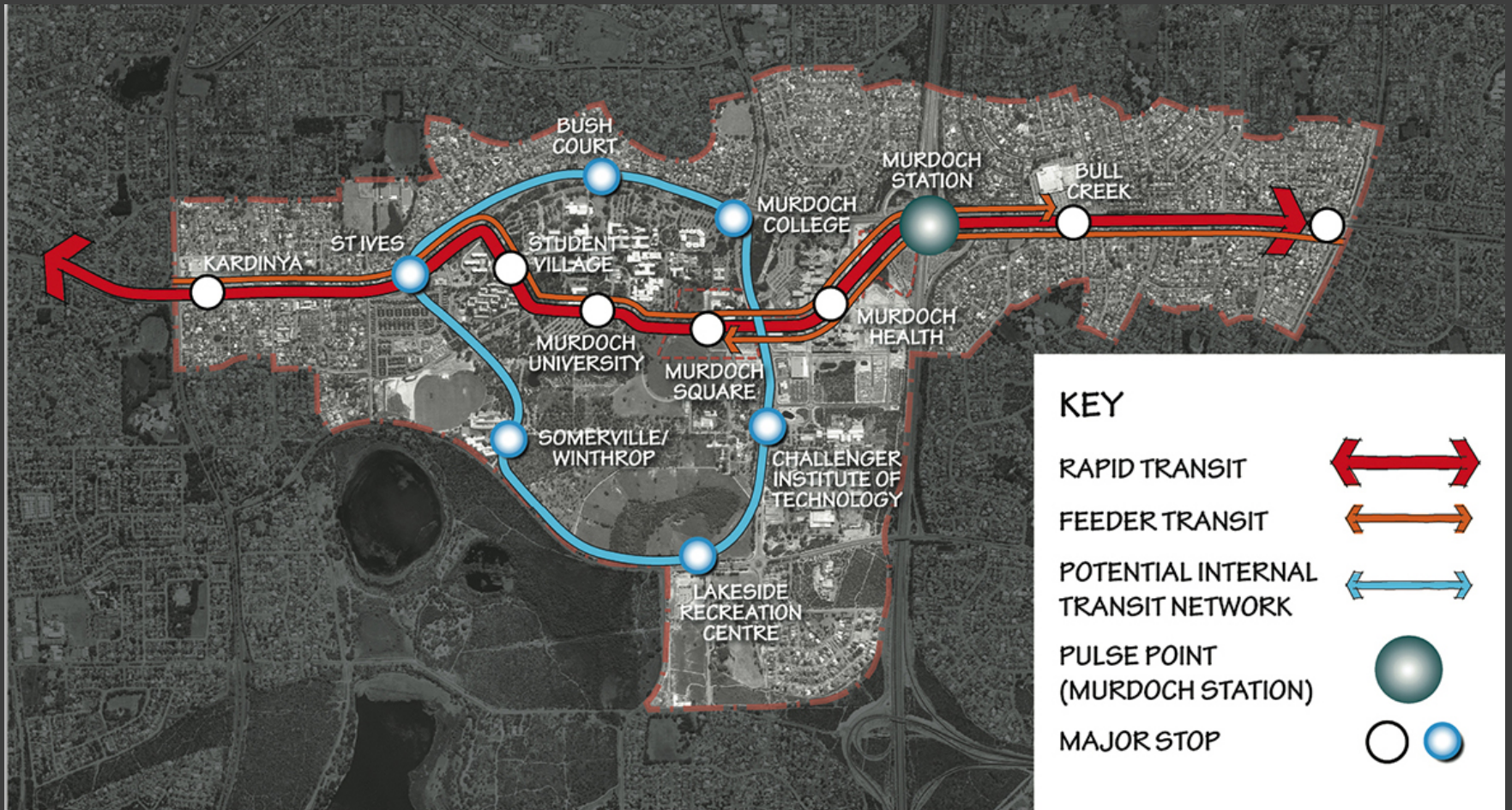


Figure 4.06: Potential internal transit network



Metropolitan Transport Links

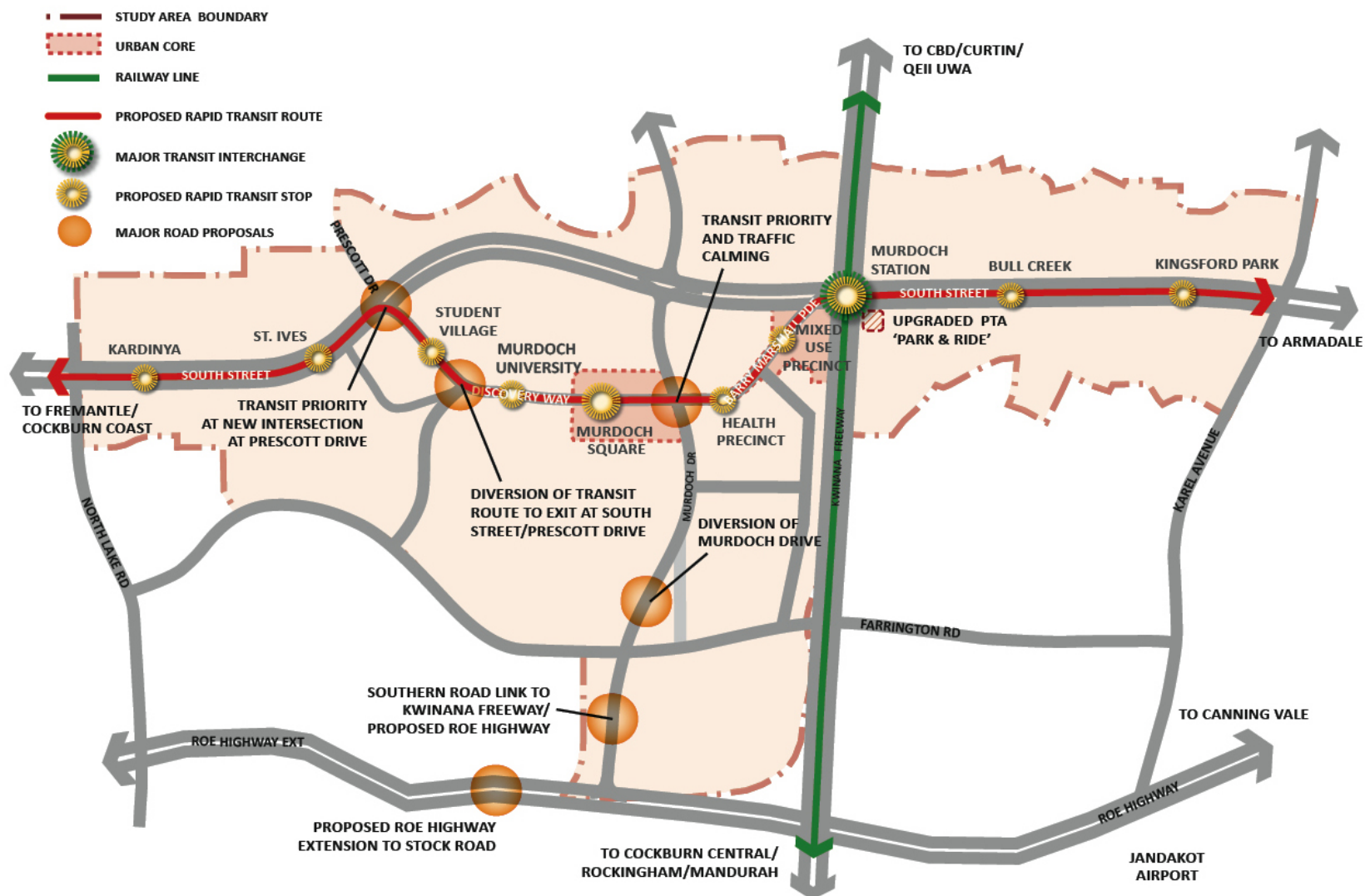
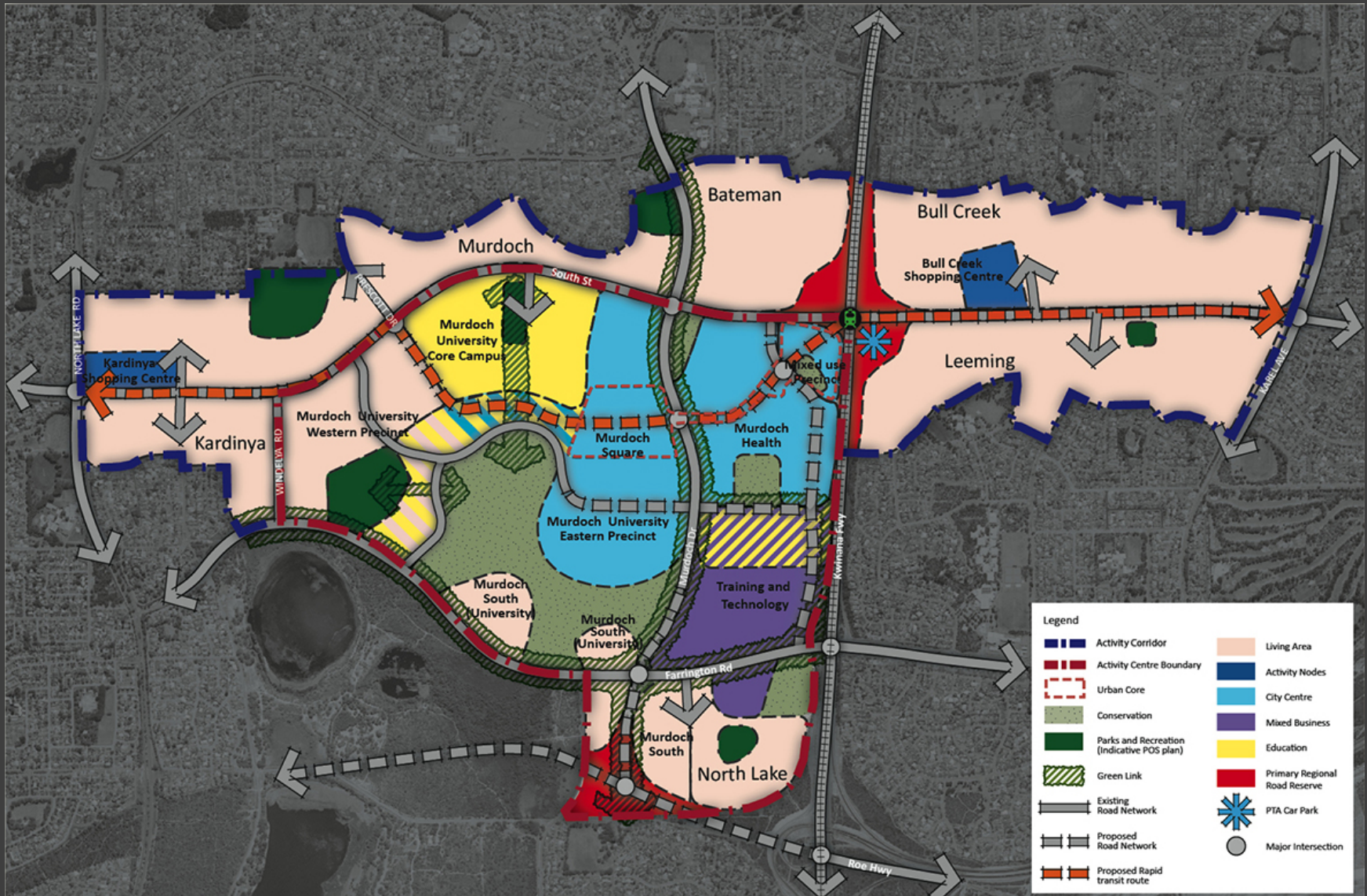


Figure 7.09: Proposed long-term transport infrastructure (uncommitted)

Structure Plan



Structure Plan Key Diagram



7.13 Key interventions and actions

A summary of the key actions recommended in this structure plan are as follows. These relate to studies, proposals and interventions highlighted throughout the plan and are considered priority actions.

RECOMMENDATION 1 **– Establishment of a Governance Model**

This is a representative body of public and private sector organisations at Murdoch, potentially with a board of trustees, funding and marketing responsibilities, control of land, delegated planning powers, design review advisory panel, and collaboration centre.

RECOMMENDATION 2 **– Pursue Amendment to the Murdoch University Act of Parliament**

The Act is required to be changed to allow for new types of complementary development to occur across the campus, within the overall concept for the activity centre. Related to this, the tenure options for land within the campus should be examined to permit flexibility for alternative uses.

RECOMMENDATION 3 **– Amendments to the Planning Schemes**

The MRS and relevant TPS(s) require to be changed to allow for new land use priorities across the activity centre and to consider the notion of a 'city centre' or 'strategic specialised centre' designation in its own right.

RECOMMENDATION 4 **– Commitment to Activity, Planning and Design Guidelines**

Activity and design priorities for the Urban Core have to be supported and implemented to ensure that the concept of a two nodal centre is delivered and that specialisation and intensity of use is achieved within the central area without dilution caused by off centre development approvals.

RECOMMENDATION 5 **– Sub-Regional Rapid Transit route connecting Murdoch**

An east-west rapid transit corridor linking Fremantle to Murdoch (and onwards to the east) should be supported by Government and shown in the Final Public Transport Plan for Perth. Studies should be carried out to consider the optimum corridor(s) to the west and east as well as to confirm the route through the activity centre.

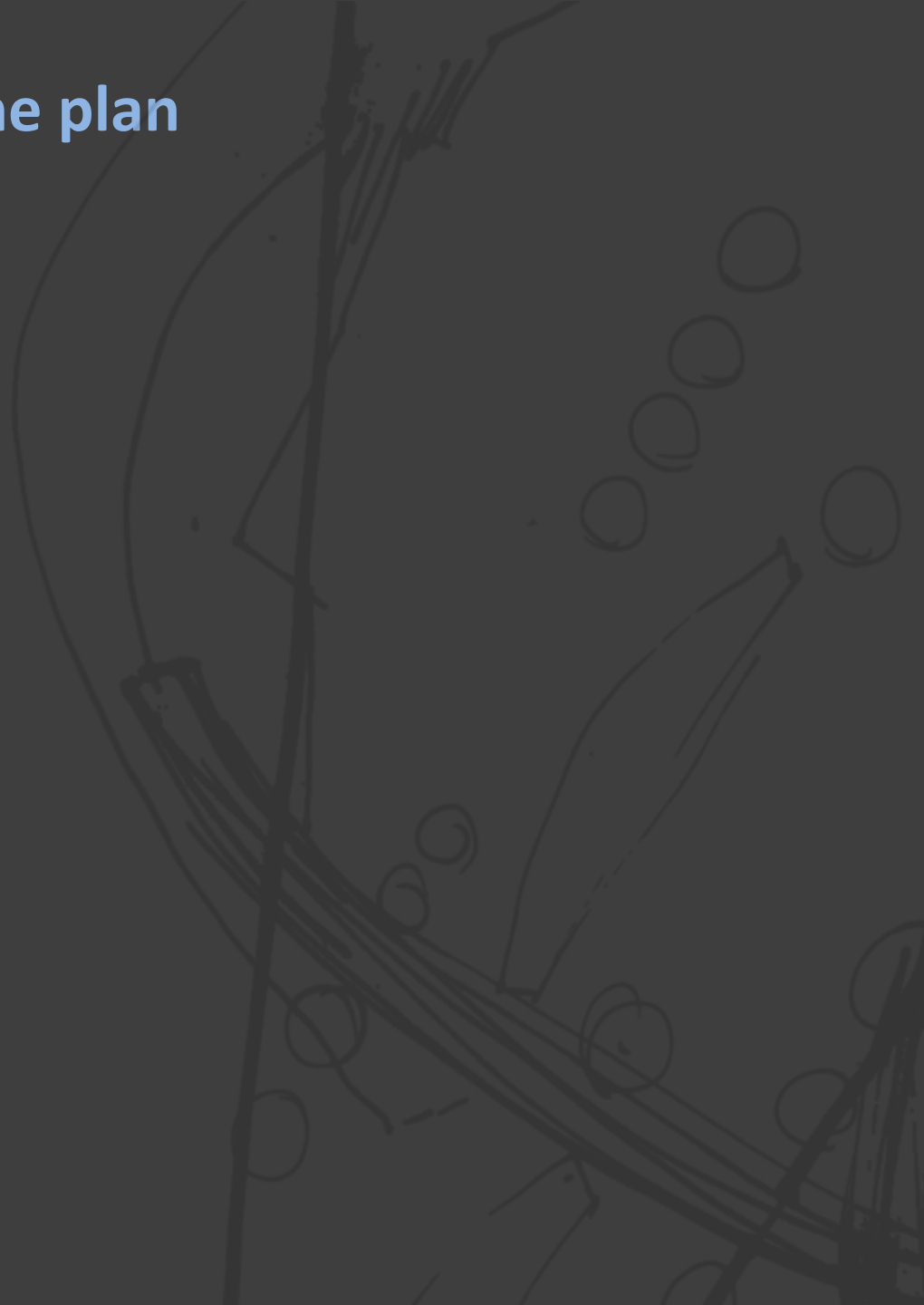
RECOMMENDATION 6 **– Restriction and management of further Car Parking**

As part of an integrated transport regime for the centre and the proposed WAPC Metropolitan Activity Centres Parking Policy, there should be a presumption against further major surface car parks developed within the activity centre. Additional parking should predominantly be on-street or contained within the existing or reduced footprint of current car parks, using multiple level or underground forms if necessary.



How to comment on the plan

Where, When, What next...



Locations

1. WAPC/DoP
2. City of Melville
3. City of Cockburn
4. Bull Creek Library
5. Murdoch University Library
6. Coolbellup Library





Document Structure

Contents

1. Introduction	1	4. Movement	61	7. Implementation	119
1.1 About this structure plan	3	4.1 Metropolitan context	62	7.1 Statutory planning context	120
1.2 Status of this document	3	4.2 Regional connections	63	7.2 Operation and implementation	121
1.3 Purpose	3	4.3 Principal public transport services	64	7.3 Amendments to the Metropolitan Region Scheme	123
1.4 How to use the Structure Plan Framework	4	4.4 Internal transit	66	7.4 Relationship to the local planning schemes	125
1.5 Summary of key findings from background analysis	4	4.5 Local road network and access regime	70	7.5 Improvement schemes and plans	125
1.6 Outcomes of the consultation process	6	4.6 Pedestrian and bicycle movement and amenity	72	7.6 Precinct planning guidance	126
1.7 Centre concept and vision	10	4.7 Parking strategy and travel management	75	7.7 Development staging	130
1.8 Planning objectives for Murdoch Activity Centre	11	4.8 Vehicular access and mobility	78	7.8 Transport infrastructure	132
1.9 Development opportunities and constraints	11			7.9 Road network	136
				7.10 Governance, collaboration and incentivisation	137
2. Structure plan strategy	13	5. Urban form	83	7.11 Further studies	138
2.1 Future scenarios for Murdoch Specialised Activity Centre	14	5.1 Existing urban form	84	7.12 Monitoring and review	140
2.2 Profile of a specialised activity centre	16	5.2 Proposed urban form	85	7.13 Key interventions and actions	141
2.3 Spatial associations within Murdoch Activity Centre	20	5.3 Townscape typology and character	87		
2.4 Proposed spatial structure	23	5.4 Built form guidelines	91	References	143
2.5 Landscape structure and legibility	25	5.5 Architectural style	93	Key references	144
2.6 Precinct areas and guidelines	28	5.6 Street interface	95	Glossary of terms	146
2.7 Prioritisation of intensity	34	5.7 Street typologies	97		
2.8 Economic development strategy	36	5.8 Public space	100	Public comment form	150
3. Activity	39	6. Resource conservation	103		
3.1 Activity anchor drivers	40	6.1 Key environmental issues	104		
3.2 Employment targets	40	6.2 Energy generation and carbon control	106		
3.3 Employment types	43	6.3 Green building credentials	108		
3.4 Health	44	6.4 Materials and waste	109		
3.5 Education and training	46	6.5 Water resources	110		
3.6 Offices and service industry	48	6.6 Flora and fauna protection	112		
3.7 Retail	50	6.7 Conservation areas and other regional landscapes	113		
3.8 Storage/distribution/other retail	54	6.8 Open space structure and links	114		
3.9 Manufacturing/processing/fabrication	54	6.9 Embellishing cultural heritage	116		
3.10 Primary rural/university	54	6.10 Further investigations	117		
3.11 Community infrastructure	56				
3.12 Utilities	57				
3.13 Dwellings and population	58				

Public comment form

Closing date for comments is 8 February 2013

The Western Australian Planning Commission is seeking public comment on this draft Murdoch Specialised Activity Centre Structure Plan.

All comments received will be taken into consideration by the Commission before the final document is released. All public comments will be treated in the strictest confidence.

When making comment, it is very helpful to:

- clearly state your opinion and the reasons for your opinion;
- if possible, outline possible alternatives or solutions to your area of interest;
- if possible, include the section or page number which relates to your area of interest; and
- provide any additional information to support your comments.

A public comment form is included opposite for your convenience.

You can also submit your comments online at www.planning.wa.gov.au.

If you prefer to make a comment in an alternative format (eg letter, email), please remember to include the relevant details as outlined on the public comment form.

If you would like more information please contact:

Project Officer,
Murdoch Activity Centre Structure Plan
Tel: 08 6551 9484
Email: murdoch@planning.wa.gov.au

Written comments can be forwarded to:

Murdoch Activity Centre Structure Plan
Department of Planning
Locked Bag 2506
Perth WA 6001

[Subdivision and planning applications](#)[Plans and policies](#)[The planning system](#)

Murdoch Specialised Activity Centre

You Are Here: [Home](#) > [Plans and policies](#) > [Metropolitan planning](#) > [Murdoch Specialised Activity Centre](#)



- › [Murdoch Specialised Activity Centre](#)
- › [Draft Murdoch Specialised Activity Centre Structure Plan](#)
- › [What is a Specialised Activity Centre?](#)
- › [How to comment](#)
- › [Community information session](#)

Murdoch Specialised Activity Centre

quick links

- › [Current vacancies](#)
- › [Development Assessment Panels](#)
- › [Feedback and complaints](#)
- › [Media Statements](#)
- › [Publications](#)
- › [Subscribe](#)

Explore: Metropolitan planning

- › [Development control policies](#)
- › [Metropolitan planning](#)
 - [Cockburn coast district structure plan](#)
 - [East Parade urban regeneration](#)
 - [East Wanneroo Structure Plan](#)
 - [Kwinana intermodal terminal](#)
 - › [Murdoch Specialised Activity Centre](#)
 - [Murdoch activity centre structure plan - Part A](#)
 - [Key features](#)
 - [Related reports](#)
 - [Perth Coastal Planning Strategy](#)
 - [Perth Waterfront](#)
 - [Port Kennedy development](#)
 - [Scarborough Beach Road](#)
 - [Stirling Highway activity corridor study](#)
 - [Stirling regional centre structure plan review](#)
 - [Transit oriented development](#)
 - [New face of Perth](#)



Finalisation of the Plan

Future Stages

1. Review of Submissions
2. Report on Public Submissions
3. Modify Draft Plan
4. Approval of Local Governments and Murdoch University
5. Endorsement by WAPC
6. Publish Final Structure Plan

Questions

