



GOVERNMENT OF
WESTERN AUSTRALIA

Welcome to Collie Your Investment Destination

OCTOBER 2021



Premier's foreword

Welcome to Western Australia's Collie region.

Collie has long been the heart of power generation in Western Australia and the town is now powering into a dynamic future. For more than 100 years Collie's coal mines and coal-fired power stations have generated much of the State's electricity. Now the local economy's diversification is becoming its strength.

As the Western Australian and global economies move to minimise greenhouse gas emissions, the Collie region's transition is attracting investment from the private sector and government, presenting a significant and unique opportunity for business investment.

With a large and skilled workforce, a range of available industrial land and a vibrant local community, Collie is an established industrial hub welcoming a wide variety of new business.

The town is at the centre of Western Australia's premier electricity transmission network and is serviced by excellent transport infrastructure. With a long history of industrial development, Collie's skilled workforce, service providers and support industries are ready to service large-scale industrial operations.

The Western Australian Government has invested significantly in the region and formed



an alliance with industry, community and workers' unions to encourage new industrial development and ensure a Just Transition for Collie. A range of new industries are already emerging in energy, mineral processing, manufacturing and agribusiness.

Collie is an attractive investment destination and its unrivalled recreational attractions and close-knit community make it a great place to live.

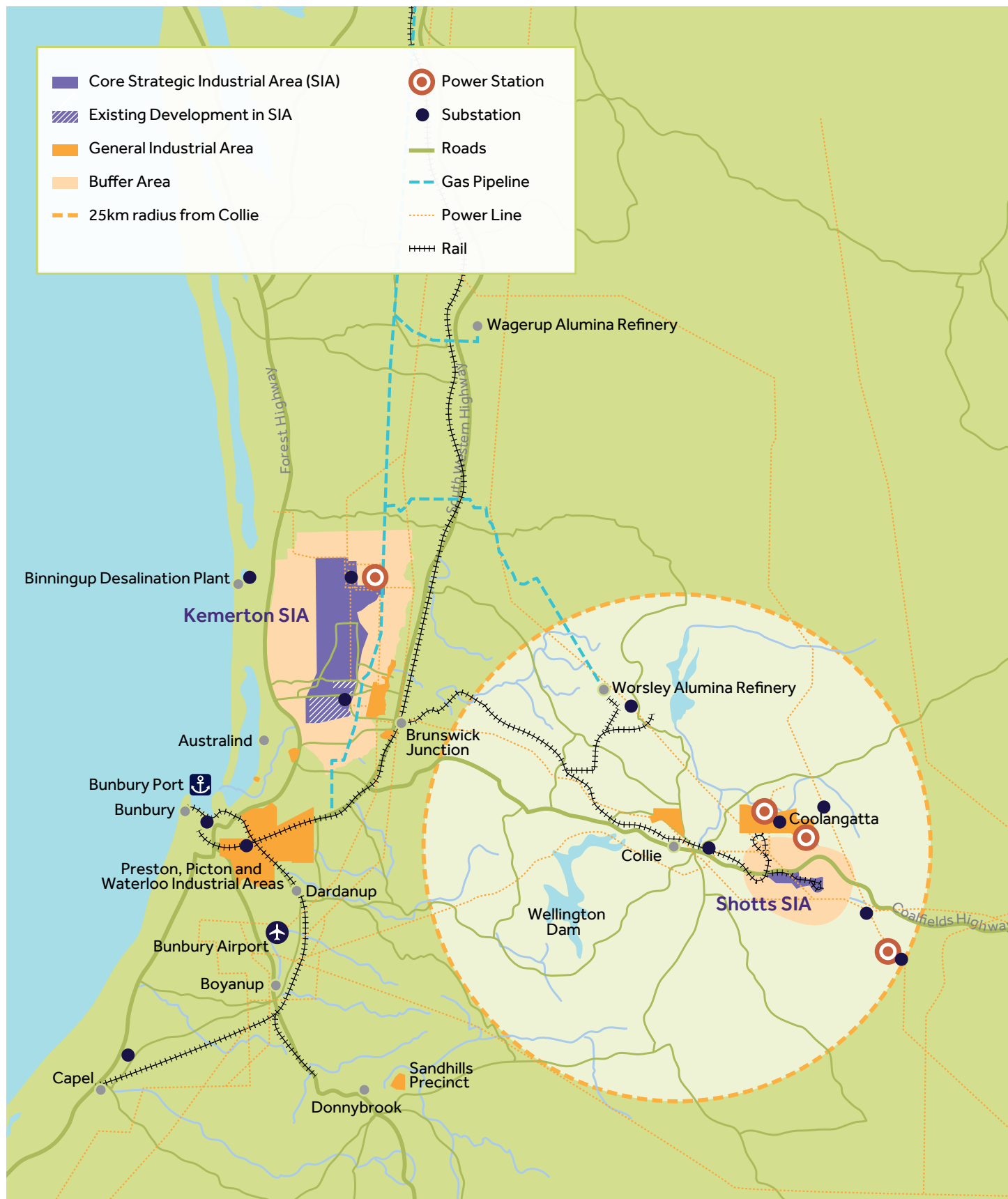
We look forward to welcoming you and your business investment in the Collie region.

Hon Mark McGowan MLA

Premier; Treasurer; Minister for Public Sector Management; Federal-State Relations



Collie industrial areas and key infrastructure



Why invest in the Collie region?

A growing regional hub

Collie is an established industrial hub, home to a diverse range of industries including energy generation, mining, manufacturing and primary industries. Traditionally a coal mining and energy generation hub, Collie's local economy is diversifying, with increasing investment in clean energy, mineral processing, manufacturing and agribusiness. Tourism is also growing in the region, which boasts impressive destinations such as Wellington National Park, Lake Kepwari and world-class mountain bike trails.

With growth of existing and new industries, robust supply chains, a large and highly skilled workforce and excellent transport and energy infrastructure, Collie is an ideal investment destination.



Heart of the South West

Collie and its surrounding region benefit from proximity to a number of key locations and is just a two-hour drive from metropolitan Perth. The nearby City of Bunbury and the deep-water Port of Bunbury is located 50 kilometres from Collie. The Busselton Margaret River Airport is situated 100 kilometres south-west and has recently been upgraded to cater for large commercial aircraft and interstate services.

Strategically located on the Coalfields Highway, Collie links the Wheatbelt and mining regions to the South West Highway, Bunbury and Kemerton - the South West's largest strategic industrial area. With further investment of \$852 million by the Western Australian Government and Commonwealth Government to build the Bunbury Outer Ring Road, Collie is well situated to provide supply chain and reduced travel benefits.

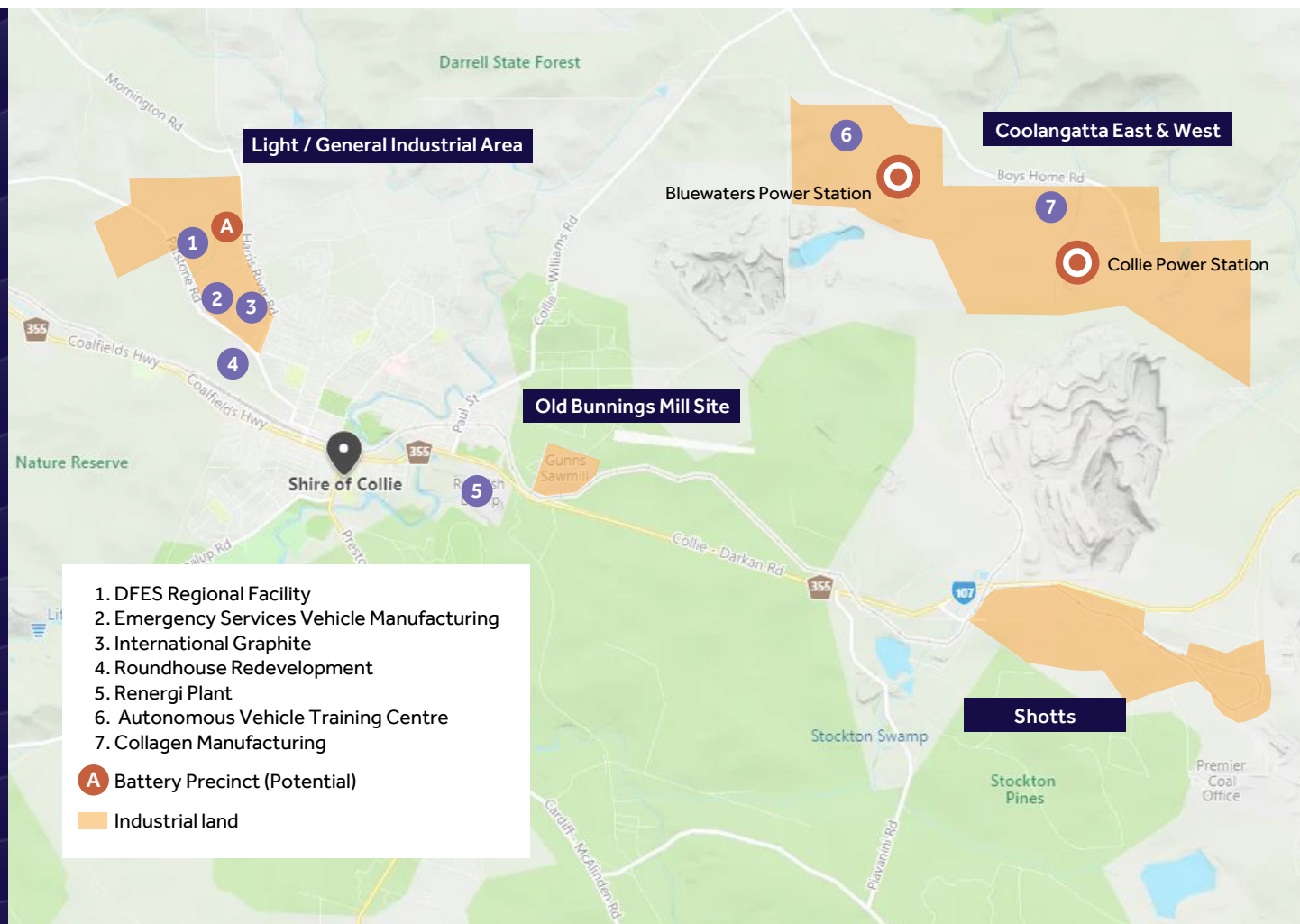
Access to infrastructure and land

Collie provides a range of industrial land options along with supporting infrastructure. The Collie region is at the centre of the South West Interconnected System, which provides access to a strongly meshed network of high-voltage power transmission lines.

Serviced lots are available in Collie's Patstone/Harris River Road light industrial area with plans underway to extend the area to meet future demand for light and general industries. This area has good access to power, water, sewer, telecommunications and roads. Subject to detailed planning, the extension area is suitable for a range of industries.

Collie's Strategic Industrial Areas (SIA) at Shotts and Coolangatta are protected by land use buffers established in the town planning scheme. These ensure that no sensitive land uses will be located nearby and offer industrial

Collie industrial areas and new projects



proponents a high degree of certainty, with clear approvals pathway.

Shotts SIA, located seven kilometres east of the Collie townsite, has access to established rail infrastructure connecting the estate to the South West line and the rest of Western Australia's rail network, as well as deep-water ports at Bunbury and Kwinana. Shotts SIA has the potential to accommodate all forms of major industry with access to a range of existing infrastructure associated with nearby power stations and coal mines, including direct access to rail and the Coalfields Highway. Shotts SIA: developmentwa.com.au/projects/industrial-and-commercial/shotts-sia/overview

The existing Coolangatta industrial estate is near the Griffin and Premier coal mines

and the Collie and Bluewaters power stations. It offers access to established high-voltage power, water supply and the Collie-Williams Road. With an existing area of around 170 hectares, the estate has scope for expansion into areas surrounding Collie power station. Subject to structure planning, both the existing and expanded Coolangatta industrial areas can accommodate general and strategic industries, including sites with potential rail access.

Collie is home to a wide range of support industries and service providers, including construction and maintenance, engineering, fabrication, welding, electrical and civil services. [Business Directory - Collie Hub \(colliehub.com.au/business-directory\)](https://colliehub.com.au/business-directory)

Collie offers close proximity and connectivity to other significant industrial areas that complement new development in Collie and include Kemerton Industrial Estate and the Preston, Picton and Waterloo Industrial Areas.

The 2,025 hectare Kemerton estate, located approximately 50 kilometers from Collie, is home to a silicon smelter, titanium dioxide, chlor-alkali and lime hydration plants, industrial gases and a gas power station.

The most recent mineral processing plant to establish at Kemerton is Albemarle's new lithium hydroxide processing plant.

Supportive political and business environment

The Collie region provides a healthy, safe and secure environment to do business, with low sovereign risk. Good governance and strong institutions are key foundations of the Australian democracy. A comprehensive and transparent regulatory framework and reliable trading record make Western Australia, and the Collie region, an ideal place for investment.

The Western Australian Government, industry, community and unions have combined to form the Just Transition Working Group, which is working to ensure Collie's long term economic prosperity. The community is proud of their role in promoting Collie's future and very supportive of new industries in the region.



Courtesy of Premier Coal

An agile and highly skilled workforce

A strength of the Collie region is the depth and range of technical skills available to support new project investments. The Collie workforce possesses a wide range of transferable skills and qualifications, including process and plant operators, fabrication, sheet-metal workers, welders, mechanical fitters, diesel and automotive technicians, electrical and instrument technicians and engineering. These skills can be readily adapted for the needs of new and emerging sectors.

Collie is home to many workers with specialised electrical trades qualifications as well as those who are skilled and competent in the use and operation of heavy equipment involved in a modern mining operation.

The region's workforce capability also covers freight, civil construction and haulage operators, general logistics, and OH&S, HR, training, and project and contract management. The workforce has demonstrated it is flexible and willing to adapt to change and has worked various roster structures for many years.

Skills development

South Regional TAFE is the premier training provider in the South West region offering a broad range of trade qualifications, such as bricklaying, cabinet making, welding, hairdressing, cookery and non-trade qualifications such as community services, health, aged care and creative industries.

Education bodies and industry are developing training opportunities through organisations such as the Collie Education and Trades Alliance (CETA). CETA is a collaborative group that is fostering cross-sector partnerships to enhance local capacity and skills, including building the profile and uptake of engineering, electrical and mechanical trades courses.

In further support of local skills development, WesTrac's Technology Training Centre at Collie's Coolangatta industrial area provides autonomous vehicle training for the resources industry. It is the first of its kind in the southern hemisphere and the only Caterpillar Autonomous



Training Facility in the world outside the USA. The facility focuses on delivering the technical skills needed to operate autonomous equipment, with usage growing rapidly across the mining sector and other industries.

Government and industry support

The Western Australian Government is committed to ensuring Collie successfully transitions from coal and coal reliant industries and builds a strong and diverse regional economy. The Government has invested over \$50 million of a committed \$100 million into attracting and supporting new investment opportunities.

Key focus areas include: expansion of industry and encouraging emerging projects, improving industrial land options and essential services, digital connectivity and transport, and developing the future workforce.

Quality of life

The picturesque Collie region boasts an attractive natural environment and connected residential community, supported by a full range of community services and affordable housing.

Collie is a major regional centre with early education, five primary schools, a secondary school and tertiary trade school. Key health care facilities include medical centres, physiotherapy and chiropractic services, dentists and a hospital currently undergoing major renovation.

The town has a broad range of sporting and recreational facilities, including a public swimming pool, mountain bike trails, football, netball, hockey, basketball, soccer, cricket, swimming, cycling, motorsports, martial arts, equestrian and water sports.

The region's natural assets attract a variety of recreational pursuits from both locals and tourists, with a number of parks and waterways, including the Wellington National Park, Lake Kepwari and Black Diamond. With over \$50 million in funding, the Western Australian Government's tourism investment plan is supporting the development of Collie as a tourism destination. Collie boasts a range of eateries including hotels, cafes and restaurants in addition to parks, picnic areas and playgrounds.

Collie is a hive of activity with a mural trail through the CBD, art gallery and a range of cultural, artistic and historic attractions and events.

Investment opportunities

Future clean energy

Collie is at the heart of Western Australia's major energy transmission network, the South West Interconnected System, thanks to its historic and ongoing role in generating electricity for the State. Collie is surrounded by land, resources and network infrastructure that mean it is well placed for future clean energy developments, including storage or renewable hydrogen.

Western Australia's Renewable Hydrogen Strategy mission is:

Western Australia will develop industry and markets to be a major exporter of renewable hydrogen. To facilitate the export of renewable hydrogen, Western Australia will develop domestic production capabilities and applications of renewable hydrogen, improving the State's hydrogen industry expertise, contributing to global decarbonisation and decarbonising the State's economy.

Through the Renewable Hydrogen Fund, the Western Australian Government is providing substantial support for renewable hydrogen feasibility studies and capital works projects across Western Australia. Hydrogen is an emerging energy source used for power generation and transport, and as a feedstock for industry.

www.wa.gov.au/renewablehydrogen

In the past two years the amount of large-scale renewable generation connected to the South West Interconnected System has more than doubled. Integrating solar and wind generation and energy storage into the network is a

critical part of the State's transition to a low-carbon future, guided by the Western Australia Government's Whole of System Plan. Western Australia's energy transformation also includes the deployment of stand-alone power systems and microgrids supported by batteries. These technologies are presenting development opportunities across regional Western Australia.

The Collie region has capacity to support battery industry development opportunities across the whole value chain, particularly in emerging downstream activities such as battery manufacturing and assembly, integration, maintenance and recycling.

Lithium-ion batteries are made mostly from lithium, graphite, nickel, cobalt and manganese, and are used in electronics, clean energy storage and electric vehicles. Western Australia has globally significant battery minerals reserves of lithium, and is the world's largest producer of mined lithium. It also produces or has significant deposits of other battery minerals including nickel, rare earths, cobalt and vanadium.

Western Australia's lithium growth prospects are reflected in the recent substantial investment in spodumene mine expansion such as at Greenbushes south-west of Collie. Existing and planned lithium hydroxide refineries at Kemerton near Collie and at Kwinana will export Lithium Hydroxide to meet growing demand from lithium-ion battery manufacturers and material suppliers.

Battery value chain

Materials



Mining raw materials



Refining



Active materials

Battery manufacturing



Cell manufacturing



Battery pack assembly

Integration and services



Integration, service and maintenance



Re-use and recycling

Upstream Downstream

Sector	Clean Energy
Opportunity	Battery industry development
Overview	Strong global demand for on-grid and off-grid energy storage systems, combined with the uptake of battery technologies across a range of applications in Western Australia, provides opportunities to expand local downstream battery industries and capabilities, from battery assembly and integration to battery manufacturing and recycling.
Market opportunity	<p>Global demand for batteries is forecast to grow nine-fold by 2030 with the transformation of energy systems and decarbonisation efforts taking place around the world. Following passenger electric vehicles, commercial electric vehicles are set to be the second largest global market segment (US\$19 billion in 2030) and includes buses, trucks and specialised vehicles for mining and defence. Stationary use of batteries for both on-grid and off-grid energy storage systems are set to account for 18 per cent (US\$23 billion) of global battery pack sales in 2030.</p> <p>Australia is ranked 5th in the world by market size for stationary battery technologies and is forecast to be the third largest market in 2030.</p> <p>In Western Australia, the Government Trading Enterprises, Western Power, Horizon Power and Synergy, are leading the trial and adoption of batteries as part of microgrids and standalone power systems to regional and remote communities.</p> <p>The mining sector is another a key driver in the uptake of battery-based energy storage systems with agriculture and defence also contributing.</p> <p>The adoption of batteries across a range of applications opens up the opportunity to establish a downstream battery industry capable of supporting specialised battery pack manufacturing and assembly for the domestic and regional markets.</p>
Collie advantages	Collie has serviced general industrial land readily available for development. Established road and rail freight links to Bunbury and Fremantle ports are also a strategic advantage.
Stage of development	Scoping stage
Related policies/ resources	<p>The Department of Jobs Tourism Science and Innovation is the lead agency supporting and facilitating battery industry development.</p> <p>Further information is available from the JTSI website: www.wa.gov.au/organisation/departments/departments-of-jobs-tourism-science-and-innovation/western-australias-future-battery-industry</p> <p>The Western Australian Future Batteries and Critical Minerals Strategy is available here: www.wa.gov.au/government/publications/western-australias-future-battery-industry-strategy</p> <p>The Energy Transformation Strategy is available here: www.wa.gov.au/organisation/energy-policy-wa/energy-transformation-strategy</p>

Investment opportunities

Energy intensive industry

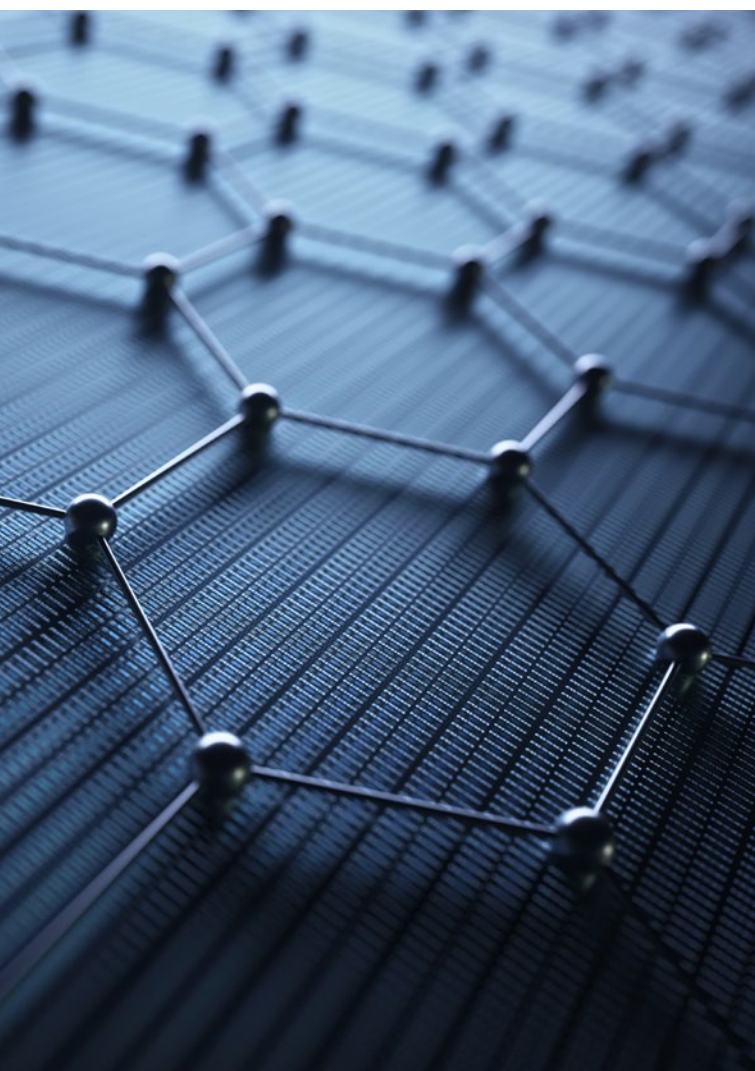
Collie is ideally suited to energy intensive industry, such as mineral processing, due to its central location on the energy transmission grid.

Mineral processing

Collie's availability of industrial land, combined with port access, transport and services infrastructure, affordable power and skilled labour make the region a good candidate to process the mineral resources of the South West and other Western Australian regions.

From Collie, companies have access to road or rail transport options to export processed product via Bunbury or Kwinana ports.

Regional mineral processing opportunities include critical minerals, with bauxite, spodumene and minerals sands feedstocks readily available in the region. The South West region is a major producer of gold, copper, coal, silica sands and alumina. The region is also a major source of rutile, zircon, leucosene, synthetic rutile, and has potential deposits of nickel, chromium and vanadium.



International Graphite

Collie is soon to become home to Western Australia's first graphite processing plant. Western Australian based company International Graphite is establishing a new micronising and graphite foil manufacturing facility in Collie's light industrial area.

The facility will include the capability to produce micronized graphite and graphite foil and sheet, as well as re-package and distribute expandable graphite powder for use in fire retardants. Development of the plant will also see manufacturing of graphite products for new technologies including mobile phones, computers, high-pressure sealants and fire-retardant building materials.

International Graphite is also researching and developing potential to process graphite to produce anode material for lithium-ion batteries. The company plans to produce advanced downstream value-add graphite products for lithium-ion batteries in a new future facility to be built in Collie.

Collie's road and rail networks extend into mineral provinces throughout the South West, Mid West, Wheatbelt and Goldfields.

The Collie-Kemerton region is home to several energy-intensive industries. Existing and future major manufacturers seeking to decarbonise their operations will consider using renewable hydrogen as Western Australia's hydrogen industry grows and supply costs reduce.

The Western Australian Government is undertaking a power study to support the expansion of energy intensive industry in the Collie-Bunbury region, as part of the State's modern manufacturing initiatives.

The capacity of the South West Interconnected System to support large-load mineral processing and manufacturing operations with renewable

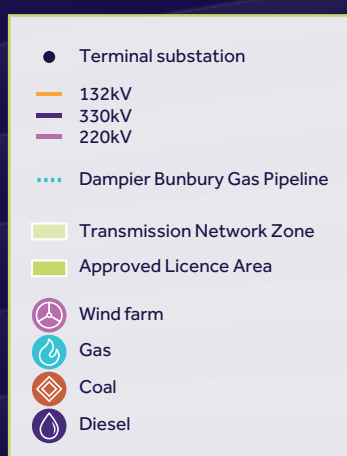


Photo: Tianqi Lithium

energy is currently being explored in detail by Western Australian Government agencies.

This uses a future green aluminium smelter as a case study, recognising that Western Australia's South West is one of the world's largest sources of bauxite and alumina production. This infrastructure and cost benchmarking study can inform feasibility studies for other critical minerals manufacturers that require green power at globally competitive prices.

South West and South East transmission network zones



Investment opportunities

Manufacturing

The Collie region boasts significant manufacturing capability with potential to expand into new industries. Current operations include manufacturing of filtration units and fire and emergency vehicles, with graphite processing located in the region (see page 10). Graphite processing is a growing industry, with the commodity used in a number of industrial applications, as well as being the largest mineral component in nickel and lithium batteries.

Collie also has potential to expand into manufacturing of sustainable building

materials. Eco-concrete is an innovative, low-carbon cement product, which uses industrial waste from Collie's power stations as a key component of its production. Testing of locally manufactured eco-concrete (Colliecrete) is currently underway to support future development of this industry.

Collie is home to operators with significant experience in servicing heavy industries. The town has existing capability in engineering, fabrication, welding, electrical and civil services.

Quantum Filtration

Quantum Filtration Medium manufactures water treatment products that are utilised for municipal drinking water, and also across the Industrial and Mining sectors. Their unique technology has opened up new opportunities in water treatment markets across the world.

Quantum received a Collie Futures Small Grant to establish a research and development laboratory at their Collie facility. The expansion has allowed Quantum to develop new product lines and continue their work with Austrade to win new export contracts.

Quantum has recently secured major new contracts to export its in-demand DMI-65 advanced water filtration products to resource and manufacturing customers in various countries, including Peru, China, and Egypt.

The South West Development Commission has a contract with Austrade to deliver TradeStart services in the South West. Through this arrangement, the South West Development Commission's TradeStart

team has helped grow Quantum Filtration Medium from a start-up to a company now exporting around the world.

Firetruck manufacturing

Collie is developing capability in specialised firetruck manufacturing, with Frontline Fire & Rescue Equipment's new facility due to commence operations in 2022. The company will build firetrucks for emergency services personnel by using its advanced manufacturing systems.

Frontline's facility will support the \$13.4 million Koolinup Emergency Services Centre, nearby in the Collie Light Industrial Area. This centre includes a regional fleet maintenance and management services workshop, which will employ 12 staff.

Western Australian company Technifire has engaged local Collie fabricator Piavanini Welding to undertake body assembly for up to 300 new firefighting vehicles, further developing specialist manufacturing capability and supply chains in the region.



Courtesy of Murdoch University and Pilatti Bros

Eco-concrete (Collicrete)

Collie has Western Australia's largest repository of fly ash, a resource produced from coal fired power generation. The large quantities of fly ash produced over the past 60 years of electricity generation has the potential to be re-purposed and contribute to the development of new industries in Collie. Those industries would be contributing to the State's transition to a Net Zero Carbon Emission economy through the production of environmentally sustainable, eco-concrete materials and products.

A Murdoch University research team is collaborating with other researchers, Government agencies and businesses, both local and national, to develop geopolymers and concrete products by combining Collie fly ash with other industrial by-products and recycled materials sourced in the region.

Opportunities being trialled include: quality assured fly-ash as a precursor for geopolymer concrete, onsite batching of geopolymer concrete to manufacture precast products

such as building blocks, wheel stops, fire rings etc, and mobile in-situ applications such as concrete footings, pavements and slabs. Research is also being completed to investigate incorporating bauxite residue (red mud) as a component of the batch design.

The project has commenced testing with various product designs and samples being trialled.

Details about the project are at:
www.collicrete.com.au

State Government funding has been provided to support the research and development phase, completion of a high-level business case and release of an Industry Information Memorandum. The Memorandum will communicate the industry and business opportunities arising from industrial processing of Collie fly ash to produce eco-concrete materials and products in Collie. Collie would become the centre for this low-carbon emissions technology and gain a large market share of low carbon emission concrete products for use in construction projects in the South West region and the State.

Primary Industries

Agribusiness

The Western Australian agrifood sector has potential to grow to contribute to Collie's regional economy. With strong demand from Asia and broader strategic export and domestic markets, the growth opportunity is significant.

There are a number of agrifood opportunities in Western Australia and the Collie region. These include food processing, particularly processing of plant protein, nutritional supplements, nutraceuticals and pet food. The opportunities in hemp processing, animal-based health products, honey production and protected cropping are outlined in further detail below.

Protected cropping

Consumers are demanding a growing supply of high quality flowers, nursery plants and produce on a year-round basis. Protected cropping systems provide growers with greater consistency, quality and yields, despite seasonal changes in the weather. This situation - and new, improved production systems - is driving strong opportunities for investment in protected cropping in Western Australia.

Animal-based health products

Global demand for animal-based health products continues to grow. While plant-based products are gaining popularity,

Cannaponics

Cannaponics Limited is a licensed medicinal cannabis cultivation, manufacturing and research company. The organisation is developing a medicinal cannabis operation in Collie creating long-term local jobs in the rapidly growing medicinal industry. A 3,600sqm greenhouse and a 2,000sqm manufacturing facility is being built in Collie, which will produce dried cannabis flower to be further processed into Cannaponics medicinal products.

The new facility will be European Union Good Manufacturing Practice (GMP) and Therapeutic Goods Administration (TGA) certified to manufacture medical, pharmaceutical and nutraceutical products. The project plans to use 100% renewable energy resources with Cannaponics subsidiary company CannaEnergy, building a 25,000sqm solar micro-grid with advanced water harvesting technology.



The initial stage of the operation is expected to support 50 local trades jobs over 12 months of construction and create approximately 24 permanent ongoing jobs, including professional, technical, production and administration roles.

animal-based health supplements are driving growth. Major animal-based health products include collagen, bone broth, marine oils and numerous others. Western Australia and Collie have all the ingredients required for success in animal-based health products targeting consumers and manufacturers seeking a safe, trusted supply. Holista Colltech have been operating in Collie for 12 years producing high quality collagen from sheep skins.

Honey

Demand is growing for premium Western Australian monofloral Jarrah and Marri honey products. Demand growth is coming from both export markets in North America, Europe and Asia and the domestic Australian market. Increasing demand is being driven by the growing awareness of the high antibacterial and antimicrobial activity of Western Australian honey. Jarrah and Marri



honey, in particular, have some of the highest antioxidant levels in the world. There is an opportunity in Collie to produce premium, value-added honey products through investment in value-added processing.

Holista Colltech

Holista Colltech is a Collie based biotech company that has developed and patented a unique technique to produce high quality collagen from sheep skins, which it currently exports for use in cosmetics manufacturing in Asia and Europe.

The ASX-listed company has operated in Collie for 12 years with operations also in Malaysia and North America. The organisation plans to expand its Collie plant to produce highly specialised collagen products to access the international medical collagen market, putting Collie at the forefront of the industry.

The company's medical-grade collagen is intended for medical products such as wound healing aids in burn patients, reconstruction of bone, cosmetic surgery, and a wide variety of dental and surgical purposes.



Hemp

Western Australia has proven capabilities in producing a range of globally competitive arable crops. Industrial hemp has a wide range of uses and is experiencing growing demand. The hemp market is segmented into:

- » seed - food and cosmetics, including oil and protein isolate
- » fibre - such as hempcrete for construction, fabrics, paper and vehicle components
- » fodder for livestock - standing or conserved as hay, pellets or silage
- » bio-remedial - remediating and protecting land resources.

The Western Australian industrial hemp industry is ready for significant growth to meet

this demand. Investment is required across the industrial hemp supply chain to enable a high quality, trusted, traceable, reliable supply of industrial hemp ingredients. In particular, investment is needed in both primary processing and value-added processing of industrial hemp. This investment will unlock significant potential plantings of hemp. A business case for the development of a hemp processing facility in Collie has been prepared through the Collie Futures Small Grants program.

Bioeconomy

There is significant opportunity for the development of bioenergy and bioproducts industries in the Collie region, which is emerging in response to growing environmental awareness and corporate targets.



Renergi

Renergi is a Western Australian start-up focussed on developing and commercialising renewable energy technologies. Renergi is using its patented design to build a commercial-scale demonstration plant in Collie which will recycle municipal solid waste and waste biomass to produce bio-oil and biochar.

The bio-oil will be sold to local industrial customers as a liquid fuel to generate industrial heat, while the biochar will be sold to Western Australian farmers as a soil conditioner.

The project makes a considerable contribution to the circular economy by diverting municipal and biomass waste from landfill and turning it into energy and other valuable by-products.

A prototype of this design has been operated by a team formerly led by Professor Chun-Zhu Li in Curtin University's laboratory at Technology Park, with this new commercial-scale plant having potential to revolutionise the management of municipal waste throughout the State and beyond.

Sector	Primary Industries
Opportunity	Bioenergy and Bioproducts
Overview	<p>As the world moves towards net zero carbon emissions, markets for bioenergy and advanced bioproducts are rapidly expanding with new and innovative technologies being commercialised on a regular basis.</p> <p>In the Collie region, the basic building blocks required for bioenergy and advanced bioproduct businesses are in place: access to large volumes of biomass, transport and electricity infrastructure, an existing skilled workforce and access to technical expertise.</p>
Market opportunity	<p>There are opportunities to develop new industries along the entire bioenergy value chain, from planting and growing feedstocks to materials transport and handling through to manufacture of advanced biochemicals. Examples of bioproducts range from liquid transport fuels through to pharmaceuticals, cosmetics, adhesives and advanced materials such as carbon fibre and graphene used in electric car batteries.</p> <p>As an indicator to the size of the market opportunity, the global bio manufacturing sector is currently worth an estimated US\$355 billion.</p>
Collie advantages	<p>Collie has potential access to biomass within a reasonable distance in the forms of horticulture waste and waste from broad acre cropping.</p> <p>The region has the right conditions for growing a wide range of feedstocks.</p> <p>A skilled workforce with experience in transport, and power generation is augmented by local companies developing expertise in advanced biomass processing technologies.</p>
Stage of development	Emerging industry development
Related policies/ resources	<p>The Department of Primary Industries and Regional Development is the lead agency supporting and facilitating the emerging bioenergy and bioproducts industry in Western Australia.</p> <p>Further information is available from the Department of Primary Industries and Regional Development website: www.agric.wa.gov.au/climate-land-water/biomass-and-bioenergy</p> <p>For location, volumes and availability of biomass see the Australian Renewable Energy Mapping Infrastructure: www.nationalmap.gov.au</p>

Project support

Foreign direct investment and exports are critical to driving the Collie region's economic development, creating jobs and generating business opportunities. Collie is a unique and attractive destination for global investors, with a secure and competitive environment supporting international investors' plans.

Invest and Trade Western Australia (ITWA) is the Government of Western Australia's 'front door' to doing business in Western Australia. ITWA was established in 2019 and supports overseas and interstate investors considering establishment or expansion of operations in Western Australia with a particular focus on the Collie region.

ITWA's network of global investment and trade offices provides tailored market entry support and business critical information for worldwide investors and buyers.

The ITWA team also assists local businesses to access key export markets or seek pre-qualified investment partners. With access to the Agent General and Investment and Trade Commissioners who manage a network of international offices across 10 cities (located in London, Dubai, Mumbai, Hanoi, Shanghai, Seoul, Kobe, Tokyo, Singapore and Jakarta), the ITWA team is well placed to identify potential overseas investors and work with

Collie-based, export ready businesses to enable expansion into global markets.

The Department of Jobs, Tourism, Science and Innovation (JTSI) is Western Australia's Lead Agency for economic development, international trade and investment, and tourism. JTSI also leads the promotion and development of the resources, defence, international education, science and innovation sectors in Western Australia. JTSI provides tailored support to proponents based on the proposed project's level of complexity, impact or significance.

Support available to proponents includes:

- » Support for emerging and existing projects of State significance in the mining, minerals processing and energy resources sectors by facilitating progress through regulatory approvals requirements.
- » Coordination across government to facilitate the planning for and implementation of large-scale renewables projects (solar, wind and hydrogen) including associated energy transmission and distribution.
- » Provision of strategic and technical advice on environment, heritage, Native Title and land tenure matters.

The Department of Primary Industries and Regional Development (DPIRD) is the lead agency for agribusiness investment and economic development. DPIRD works to develop and protect Western Australia's agriculture and food sector and aquatic resources, and build vibrant regions with strong economies.

JTSI and the South West Development Commission can also provide facilitation assistance to projects located in Collie.

For further information please contact the South West Development Commission.

T: (08) 9734 2322

E: collie@swdc.wa.gov.au



Investment incentives and programs

The Government of Western Australia has made a significant commitment to supporting economic development and diversification in the Collie region through funding programs designed to enable job-creating industry investments.

Collie Futures Fund

The Collie Futures Fund is an industry incentive program to support economic development opportunities identified by industry, the local community and the Economic Development Action Plan for the Collie and Bunbury Regions.

www.swdc.wa.gov.au/collie-bunbury-economic-development-action-plan/

Funding is available for new projects which demonstrate a significant and sustainable impact on the local economy through increased productivity and new jobs. Specifically, up to a maximum of \$2 million is available as co-funding for high-value investments that can commercialise a new industry or business or substantially expand an existing business.

For further information about the Collie Futures Fund please contact the South West Development Commission.

T: (08) 9734 2322

E: collie@swdc.wa.gov.au

W: www.swdc.wa.gov.au/grants-funding/collie-futures-fund/

Collie Industry Attraction and Development Fund

The Collie Industry Attraction and Development Fund (CIAD) is an invitation specific fund, designed to target transformational initiatives and industry investments that can significantly expand and diversify the economic base.

For further information about the CIAD please contact the South West Development Commission.

T: (08) 9734 2322

E: collie@swdc.wa.gov.au



Courtesy of Premier Coal

Further support

Western Australian Government assistance

Access Asia Business Grants

The Access Asia Business Grants provide funding for Western Australian businesses to enter or expand their trade with Asian markets. Funding can be used for product marketing, expo/trade visits, cultural/language training and other activities that help build businesses' capacity to trade with Asia.

For further information, visit:

www.wa.gov.au/organisation/departments-of-jobs-tourism-science-and-innovation/access-asia-business-grants

Agrifood and Beverage Voucher Program

The Agrifood and Beverage Voucher Program supports small to medium enterprises across regional and metro Western Australia to overcome potential barriers to growth, reduce risks around planned expenditure and capture new opportunities for growth. Western Australian food and beverage manufacturers can apply for vouchers valued up to \$10,000 to engage consultants or technical experts to help grow their business.

For further information, visit:

www.agric.wa.gov.au/AFBvoucherprogram

Clean Energy Future Fund

The Clean Energy Future Fund provides a source of funding to support the implementation of innovative clean energy projects in Western Australia. Clean energy projects will be eligible for funding of between \$250,000 and \$2 million per project.

For further information, visit:

www.dwer.wa.gov.au/ceff

Exploration Incentive Scheme

The Exploration Incentive Scheme is a \$10 million per year Western Australian Government initiative that aims to encourage exploration in Western Australia for the long-term sustainability of the State's resources sector.

For further information, visit:

www.dmp.wa.gov.au/Geological-Survey/Exploration-Incentive-Scheme-1428.aspx

Government Co-funded Exploration Drilling

The co-funded Government - Industry Drilling program funds up to 50% of direct drilling costs to promote geoscience exploration and contribute to the economic development of regional areas of Western Australia.

For further information, visit:

www.dmp.wa.gov.au/Geological-Survey/EIS-Government-co-funded-1433.aspx

International Competitiveness Co-Investment Fund

The International Competitiveness Co-Investment Fund provides grants of between \$50,000 and \$100,000 to help businesses rebuild their existing Asian market business relationships disrupted by COVID-19, and to develop and implement strategies to capture export market opportunities and attract investment that will lead to direct benefits for regional Western Australia.

For further information, visit:

www.agric.wa.gov.au/ICCF

Investment Attraction and New Industries Fund

The \$100 million Investment Attraction and New Industries Fund aims to provide industry assistance, attraction and grants across a range of emerging industries, including battery manufacturing, green steel and cyber security.

For further information, visit: www.wa.gov.au/organisation/departments-of-jobs-tourism-science-and-innovation/new-industries-fund

Local Capability Fund

The Local Capability Fund is an initiative under the Western Australian Government's Plan for Jobs. The purpose of the fund is to assist small and medium enterprises to increase their capability and competitiveness as suppliers of products, services and works to the Western Australian Government, major projects and other important markets.

For further information, visit:

industrylink.wa.gov.au/local-capability-fund

New Industries Fund – Innovation Vouchers Program

The New Industries Fund – Innovation Vouchers Program enables small to medium enterprises to develop greater opportunities to commercialise their ideas and innovations and expand to create jobs.

For further information, visit:

www.newindustries.wa.gov.au/opportunity/innovation-vouchers.

Regional New Industries Fund

The Regional New Industries Fund provides funding for projects that increase connectivity and build capability across Western Australia and to international markets. In particular, the State Network Stream (under the fund) prioritises initiatives that enable technology development, service innovation and market access.

For further information, visit:

www.drd.wa.gov.au/projects/Economic-Development/Pages/regional_new_industries_fund.aspx

Royalties for Regions – Regional Economic Development Grants

The Regional Economic Development Grants program invests in community-driven projects to stimulate economic growth and development in regional Western Australia.

For further information, visit:

www.swdc.wa.gov.au/grants-funding/red-grants

Value Add Investment Grant (VAIG)

The VAIG is aimed at supporting agriculture, food and beverage businesses undertaking value adding in Western Australia (or those seeking to expand in, or relocate to, Western Australia). In this context, value adding is defined as any activity that transforms Western Australian primary production from its original or raw form (i.e. commodities) into a state which is perceived as more valuable to the end consumer (i.e. products), thereby accruing higher margins to the producer.

For further information, visit:

www.agric.wa.gov.au/VAIGrants

Western Australian Renewable Hydrogen Fund

The Western Australian Government's Renewable Hydrogen Fund supports renewable hydrogen feasibility studies and capital works projects to grow the renewable hydrogen industry and support key opportunities across the State. Funding is directed to the four strategic focus areas of the Western Australian Renewable Hydrogen Strategy: export, remote applications, hydrogen blending in natural gas networks, and transport.

For further information, visit:

www.wa.gov.au/government/publications/western-australian-renewable-hydrogen-fund

Australian Government assistance

Manufacturing Modernisation Fund

Round 2 of the Manufacturing Modernisation Fund supports transformation in small and medium manufacturing businesses. It provides co-funded grants to transform manufacturing and to support job growth and a more highly skilled workforce. \$50 million will be available for this grant opportunity from 2020-21 to 2022-23.

For further information, visit:

business.gov.au/Grants-and-Programs/Manufacturing-Modernisation-Fund

Research and Development Tax Incentive

The Research and Development Tax Incentive helps companies innovate and grow by offsetting some of the costs of eligible research and development (R&D).

For further information, visit:

business.gov.au/grants-and-programs/research-and-development-tax-incentive

Clean Energy Innovation Fund

The Clean Energy Finance Corporation's \$200 million innovation fund targets a diversified portfolio of Australian-based clean energy investments with a long term commercial outlook. Final investment approval is provided by the Clean Energy Finance Corporation Board, under the Clean Energy Finance Corporation Act.

For further information, visit: www.cefc.com.au/where-we-invest/special-investment-programs/clean-energy-innovation-fund

AMGC Commercialisation Fund

AMGC co-funds industry projects to commercialise innovation. In this way, approved industry projects demonstrate how, and the techniques, Australian manufacturing can become more globally competitive.

AMGC has received an additional \$30 million in funding to continue supporting industry projects. This is called the AMGC Commercialisation Fund which will co-fund projects that focus on the [6 National Manufacturing Priorities](#) recently announced by the Australian Government as part of its [Modern Manufacturing Strategy](#).

For further information, visit:

www.amgc.org.au/projects

Cooperative Research Centres Projects Grants

The Cooperative Research Centres Projects Grants program provides industry-led collaborations with short term (up to 3 years) matched funding to develop important new technologies, products and services. Collaborations from all industry sectors, research disciplines and community sectors can apply.

For future funding round information, visit:

www.business.gov.au/assistance/cooperative-research-centres-programme/cooperative-research-centres-projects-crc-ps

Entrepreneurs' Programme – Business Growth Grants

The objective of the Entrepreneurs' Programme is to connect small and medium-sized businesses with the capabilities and networks they need to innovate, compete and grow in Australian markets and/or markets in other countries. Business Management initiative consists of two elements:

1. business advice and facilitation services
2. business growth grants to assist you to implement your plan's recommendations.

For further information, visit:

www.business.gov.au/Grants-and-Programs/Growth-Grants#key-documents

Entrepreneurs' Programme – Innovation Connections Grant

Innovation Connections provides grant funding to assist businesses to understand their research needs, connect with the research sector and fund collaborative research projects.

For further information, visit:

www.business.gov.au/Grants-and-Programs/Innovation-Connections

Export Market Development Grants

The Export Market Development Grants (EMDG) reimburses expenses incurred for eligible export promotional activities to existing and potential Australian exporters.

From 1 July 2021, funding is provided to compensate eligible export businesses up to 50% of their promotional expenses between \$40,000 and \$150,000 per annum depending on the Tier you qualify for (which is subject to the scheme's demand).

For further information, visit:

www.austrade.gov.au/australian/export/export-market-development-grants/emdg-from-1-july-2021



Export Finance Australia

Export Finance Australia (EFA) is the Australian Government's export credit agency, helping Australian businesses. EFA has a range of specialist finance solutions to assist exporters with unsecured loans, longer term loans, bonds and buyer finance for larger projects.

For further information, visit:

www.exportfinance.gov.au/about-us/our-solutions

Major Project Status

Major Project Status is the Australian Government's formal recognition of the national strategic significance of a project, through its contribution to economic growth, employment, or contribution to regional Australia.

For further information, visit:

www.business.gov.au/Grants-and-Programs/Major-Project-Status

Tradex Scheme

The Tradex Scheme provides an upfront exemption from customs duty and GST for eligible goods imported to Australia that are then exported within one year or another approved period. This provides a cash-flow benefit to the importer.

For further information, visit: www.business.gov.au/grants-and-programs/tradex-scheme

Australian Renewable Energy Agency (ARENA)

ARENA's purpose is to improve the competitiveness of renewable energy technologies and increase the supply of renewable energy through innovation that benefits Australian consumers and businesses.

For further information, visit: www.arena.gov.au

Connecting you with the Collie region

The Western Australian Government, the Shire of Collie and our local economic development partners, are here to assist businesses and facilitate investment into the region.

Collie Delivery Unit South West Development Commission

Old Post Office Building
63 Throssell Street
Collie WA 6225
T: +61 (08) 9734 2322
E: Collie@swdc.wa.gov.au
W: www.swdc.wa.gov.au

South West Development Commission is a statutory authority of the State Government that partners with communities, government, business and industry to identify and support projects that benefit the region. Driving economic development outcomes is a core area of focus, with growth, internationalisation and diversification central to its strategic aims.

Shire of Collie

Mr Stuart Devenish
Chief Executive Officer
Shire of Collie
87 Throssell St, Collie,
Collie WA 6225
T: +61 (08) 9734 9000
E: colshire@collie.wa.gov.au
W: www.collie.wa.gov.au

The Shire of Collie is a medium sized local authority and covers an area of 1,685 sq km, set amongst 78% State Forest and includes Wellington Dam, a water catchment of state significance.

Invest and Trade Western Australia

Department of Jobs, Tourism, Science and Innovation
Level 11, 1 William Street
Perth WA 6000
T: +61 (08) 6277 3000
E: investandtrade@jtsi.wa.gov.au
W: www.investandtrade.wa.gov.au

Invest Trade Western Australia is the Western Australian Government's global investment attraction and trade promotion gateway. Their customised services can help companies unlock investment and trade opportunities in the Collie Region. All investment services are provided free of charge.

Disclaimer

The information is provided in good faith and believed to be accurate and current at the time of publication but this cannot be guaranteed. The State of Western Australia makes no representation, warranty or claim of any kind (express or implied) about the completeness, accuracy, reliability or suitability, with respect to the information. The reader is solely responsible for making their own assessment of the information and should make and rely on their own enquires, research and judgements in making decision affecting their own or any other persons' interest.

To the fullest extent permitted by law, the State of Western Australia, its officers, employees, agents and representatives, shall in no way be liable, in negligence or howsoever, for any loss, damage, cost or expenses (regardless of whether the loss is direct, indirect or consequential) caused, sustained or incurred by anyone using or relying on the information, even if such information is or turns out to be wrong, incomplete, out of date or misleading.