



# Common Ground

Develop two Common Ground facilities to provide permanent, supportive housing to help address chronic homelessness



Part of All Paths Lead to a Home:  
Western Australia's 10-year Strategy on Homelessness



## Two purpose-built facilities

- Permanent housing
- Multi-storey facility
- Shared function and meeting space
- Commercial/social enterprise space
- On-site support services
- Communal indoor/outdoor space

## Learnings from Brisbane Common Ground

- Marked improvements in residents' mental and physical health
- Residents described Common Ground as 'safe'
- 93% of residents described Common Ground as 'home'
- Annual state government cost saving of \$13,100 per resident
- Independently evaluated with positive results

## Design

- Purpose-built facility with self-contained apartments
- Environmentally sustainable design, disability accessible and culturally safe
- 24/7 concierge/security function
- Integrated into the community

## Location

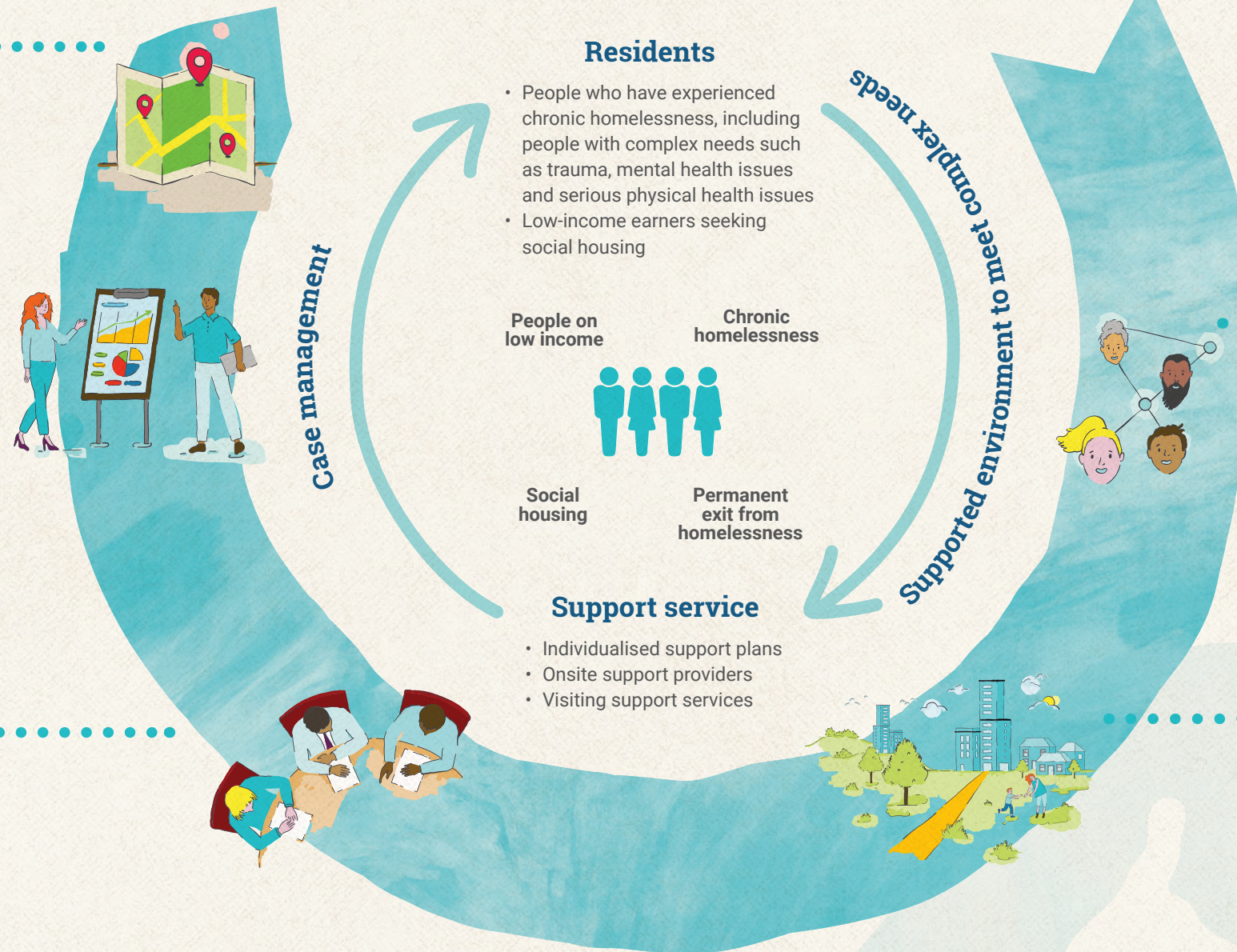
- Responsive to locations of unmet need
- Site one: Perth CBD – Hill Street, East Perth
- Site two: Allnutt Street, Mandurah

## Outcomes

- Access to safe and permanent housing
- Visible reduction of rough sleepers within the local community
- Increased access to training opportunities to maximise employability
- Improved health and wellbeing for residents
- Boost employment in construction industry
- Commercial opportunity for local business
- Reduced cost to government services
- Increased housing supply

## Approach

- Evidence-based model to end chronic homelessness
- Crime prevention through architectural design
- Independent evaluation
- 'Housing first' approach



## Principles of Common Ground



Immediate access  
to housing with  
no preconditions

50:50

Social  
housing

Formerly  
homeless



Culturally safe



Case management and  
access to support



Positive social connection

Data analysis and  
design brief

Location  
selection

Architectural design  
and planning

Construction

Service providers  
appointed

Site completion  
and fit out

Facility opens