



Finance Technical Guideline

TG015 Building in Bushfire Prone Areas

1 Building in bushfire prone areas

1.1 Purpose

This guide sets out Finance's requirements for government building projects located in bushfire prone areas. This guide should be circulated as appropriate to consultants.

1.2 Background

On 7 December 2015, State Planning Policy 3.7 Planning in Bushfire Prone Areas was gazetted. (Department of Planning, 2015) This policy applies to all land designated as bushfire prone by the Department of Fire and Emergency Services (DFES) as highlighted on their Map of Bush Fire Prone Areas. (DFES, 2015)

1.3 Requirements for government projects

All State Government building projects must be designed in accordance with:

- [State Planning Policy 3.7 and Guidelines for Planning in Bushfire Prone Areas](#);
- DFES's [Map of Bush Fire Prone Areas](#); and
- AS 3959 *Construction of buildings in bushfire-prone areas*.

This requirement applies to all Finance projects, whether development approval is required or not.

The National Construction Code (NCC) refers to AS 3959 in relation to residential buildings. However, it is noted that in relation to the NCC, non-residential buildings are not required to meet AS 3959. This aspect of design and construction compliance is therefore not addressed by Building and Occupancy Permit certification requirements.

It is a requirement that all State Government building projects with an assessed BAL 12.5 or above meet the requirements of AS3959 for the assessed BAL, whether or not they are residential. Where required, a suitably qualified BAL assessor or Fire Engineer should be engaged to provide certification of compliance with the standard.

1.4 Process for government projects

Design teams are required to check each project site on DFES's [Map of Bush Fire Prone areas](#). If any part of the site is marked as being at risk of bush fire, design teams

are required to undertake a [BAL Assessment \(Basic\)](#) to determine if the proposed building has a low risk of fire exposure. The Department of Planning provides guidance on how to complete this assessment, refer to the [BAL Assessment \(Basic\) Factsheet](#).

If the site's BAL is assessed as being LOW, no further action is required. If a DA is required, the BAL Assessment (Basic) documentation will form part of the application.

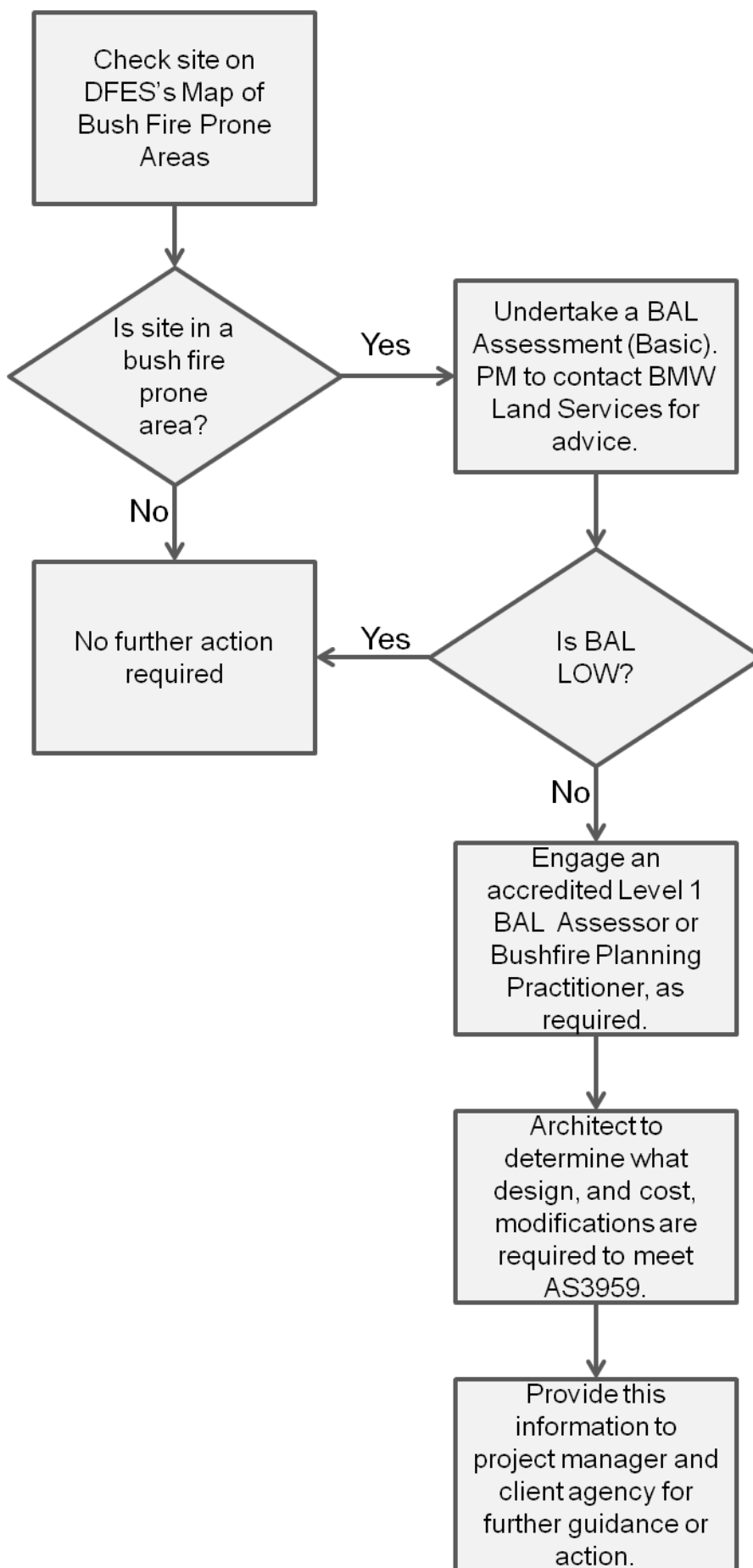
If the criteria for a BAL Assessment (Basic) cannot be met, the design team will need to engage an accredited Level 1 BAL Assessor or a Bushfire Planning Practitioner to:

- confirm the site's BAL;
- advise on required design and construction measures in accordance with AS 3959; and
- develop a bushfire management plan for the site.

The project architect will need to identify what site or design modifications are required, in accordance with AS 3959, and any associated costs. This information must be provided to the project manager and client agency, for further guidance and action. This documentation will form part of a Development Approval application, if DA is required.

For further clarification on these requirements, project managers and design teams are to contact Finance's Statutory Planning and rAsset Policy branch, who can provide guidance on planning requirements and BAL assessments.

This process is illustrated in the flowchart below:



2 References

Department of Fire and Emergency Services, 2015 *Map of bushfire prone areas*
<https://www.dfes.wa.gov.au/regulationandcompliance/bushfireproneareas/Pages/default.aspx>

Department of Planning, 2015 *State Planning Policy 3.7 and guidelines*
<https://www.dplh.wa.gov.au/information-and-services/state-planning/bushfire-planning/state-planning-policy-3-7-and-guidelines>

3 Document Control

TRIM Reference	2015/02812 DOC 02202933
Revision Date	July 2021
Next Revision	July 2022
Content Owner	Assistant Director, Building Technical Services
Enquiries	Consult with Content Owner or principal.architect@finance.wa.gov.au

Date	Author	Reason	Sections
15/09/2016	A. Raynes Goldie	Revisions	All
22/03/2017	C MacLean	Format Updates	All
23/11/2018	K.Maher	Clarify requirement to meet AS3959 for BAL 12.5 or above, regardless of residential or not. Revise Version Control Protocol Revise Principal Architect	Section 1.3 Document Control Document Approval
6/08/2019	A. Raynes-Goldie	Updated all links	All
6/07/2021	A Raynes-Goldie	Revised BMW references	All

4 Document Approval

This guideline was endorsed and approved for use on 6 July 2021 by:

Dean Wood, Principal Architect