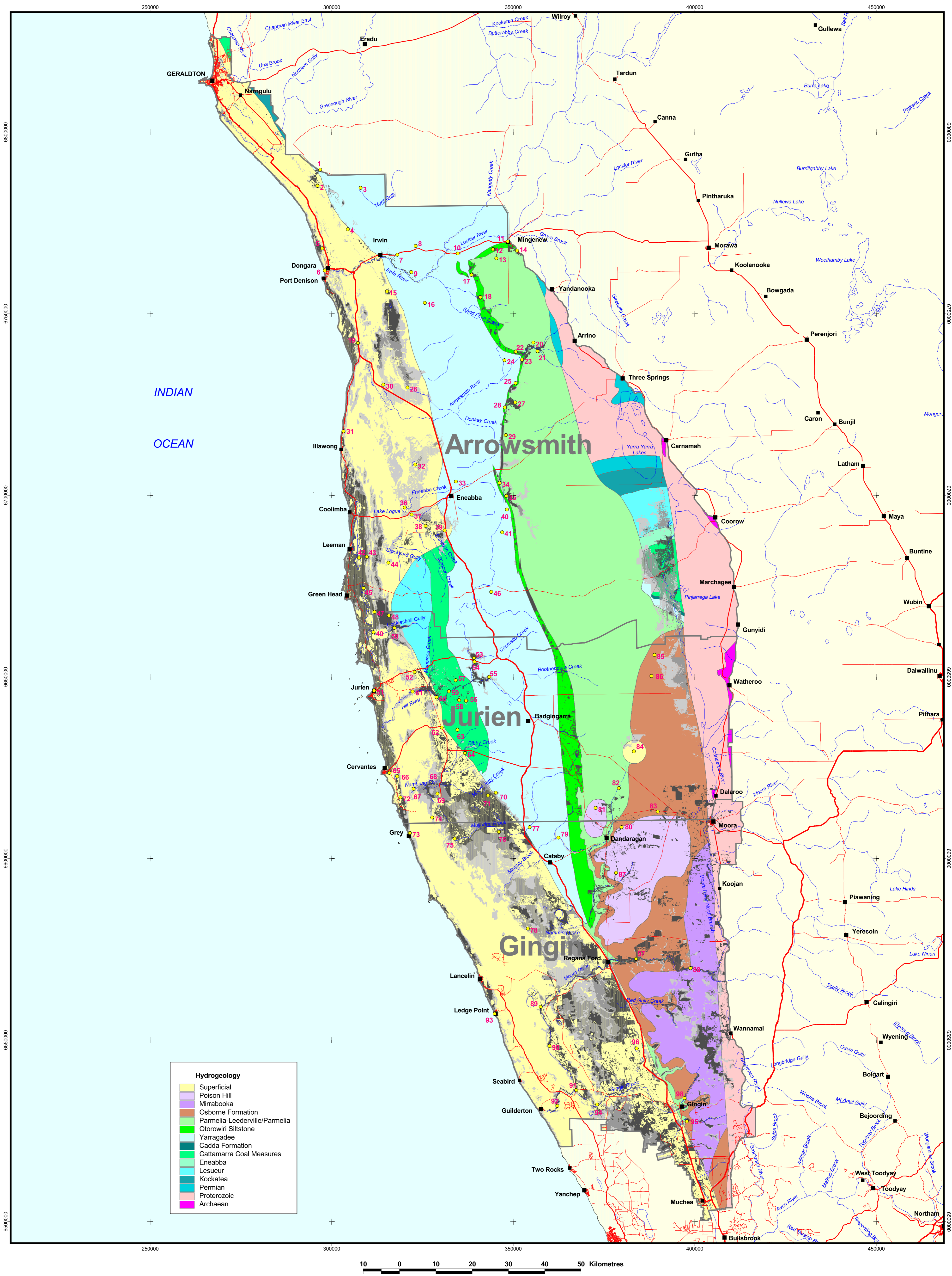


# Potential GDEs in the Northern Perth Basin



Hydrogeology		
Superficial	Yellow	
Poison Hill	Light Green	
Mirrabooka	Light Blue	
Osborne Formation	Light Purple	
Parmelia-Leederville/Parmelia	Light Green	
Otorowiri Siltstone	Light Green	
Yarragadee	Light Green	
Cadda Formation	Light Green	
Cattamarra Coal Measures	Light Green	
Eneabba	Light Green	
Lesueur	Light Green	
Kockatea	Light Green	
Permian	Light Green	
Proterozoic	Light Green	
Archaean	Light Green	



Projection Information  
 Vertical Datum: Australian Height Datum (AHD)  
 Horizontal Datum: Geocentric Datum of Australia (GDA 94) MGA zone 50

LEGEND	
■ Townsites / Places	● Potential GDE Sites
□ Groundwater Areas	■ Areas of Potential GDE (depth to water table)
— Highway	■ 0 - 5m
— Main Roads	■ 5 - 10m
— Local Rd - Sealed	■ 10 - 20m
— Rivers	
— Lakes	

Requestee: S. Johnson  
 Map Author: G. McCourt  
 Task ID: SE.HY.25068  
 Date: 10.08.04

**GOVERNMENT OF WESTERN AUSTRALIA**  
**Department of Environment**

This map is a product of the Department of Environment, Resource Science Division and was printed on 10.08.2004.

This map was produced with the intent that it be used for community consultation at the scale of 1:500 000.

While the Department of Environment has made all reasonable efforts to ensure the accuracy of this data, the Department accepts no responsibility for any inaccuracies and persons relying on this data do so at their own risk.

Data Directory		
Dataset	Custodian	Date
Hotspots_final1_II.shp	DEWCP	10/08/04
Towns_geonoma_Dola	DLI	10/08/04
Groundwater Areas	DOE	13/06/00
Hydrogeology	DOE	10/08/04
Road_Centrelines_DLI	DLI	01/05/04
Gisdba_gnd1_fm_rivers_ga.shape	GA	01/06/00
Lakes_1M_GA	GA	01/06/00
Gw_study_area_II.shp	DOE	10/08/04
Npbgde_30_34_36.shp	DOE	10/08/04
WA Coastline_WRC (poly)	DOE	01/06/04

