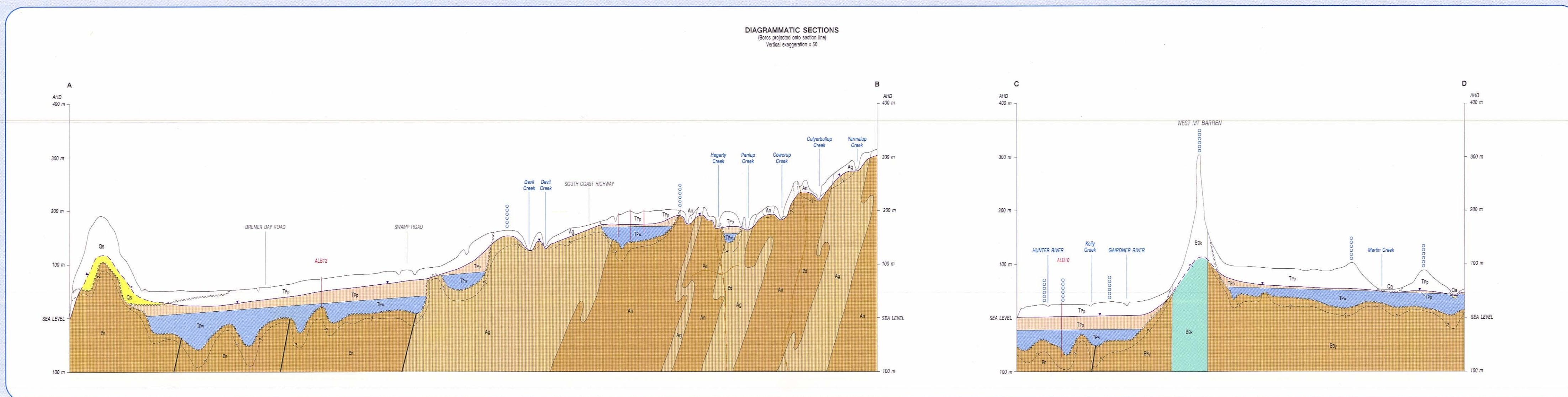
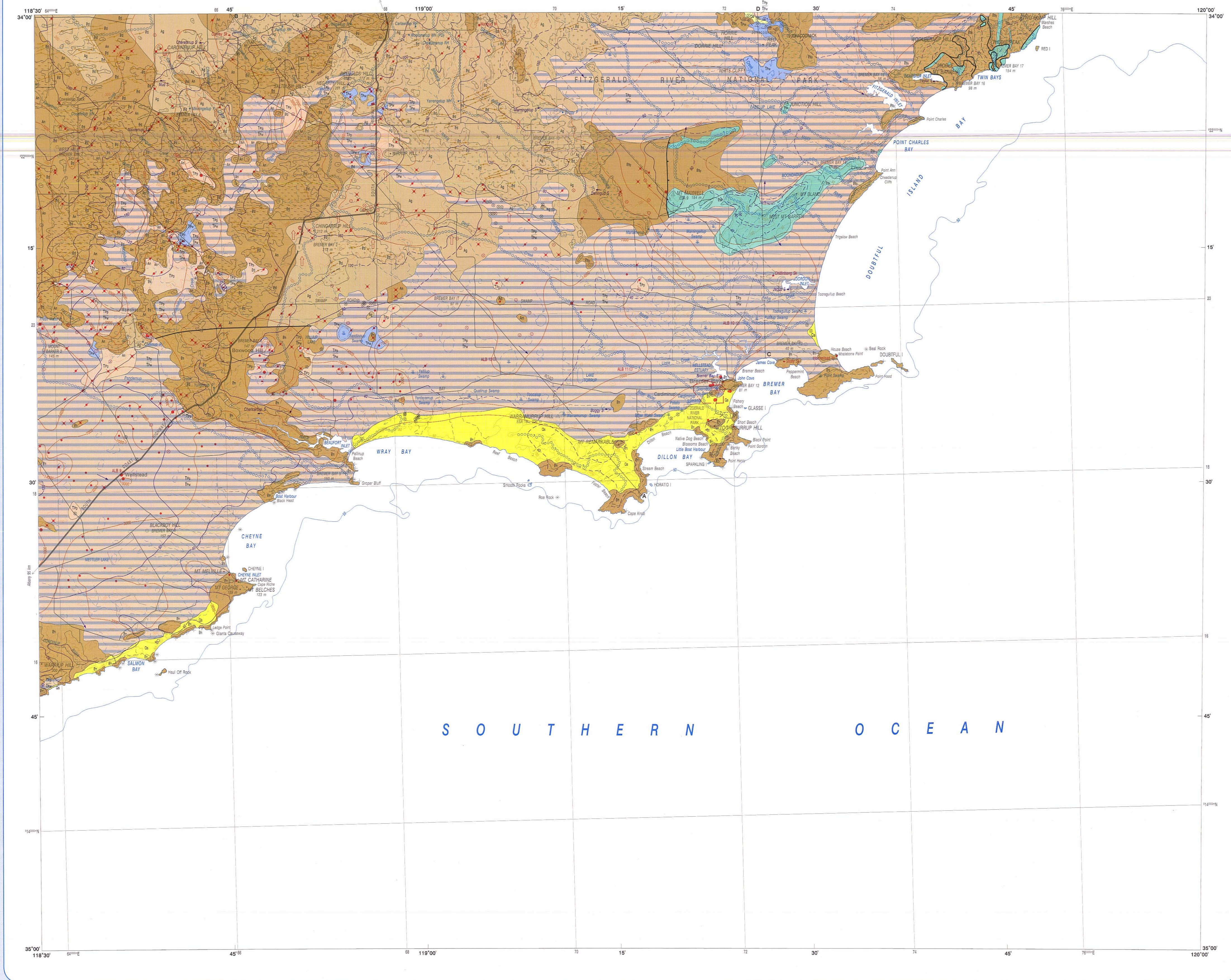


BREMER BAY HYDRO



REFERENCE

AQUIFER CHARACTERISTICS

- Surficial aquifer—local aquifer, probable secondary aquifer beneath, minor groundwater resources
- Surficial aquifer—local aquifer, probable secondary aquifer beneath, minor groundwater resources
- Sedimentary aquifer with irregularly porous—extensive aquifer, high local groundwater resources
- Sedimentary apolite and local aquifer—minor or no groundwater resources

HYDROGEOLOGY

QUATERNARY

- Qa Alluvium, minor siltstone, gravel, sand, silt, and clay
- Qb Shallow marine, estuarine, lagoonal, and coastal siltstone deposits—sand, clay, and limestone

PERMIAN

- Fitzgerald Group
 - Pt 1 FALLLOUP SILTSTONE—micaceous sandstone and white siltstone, sandstone, and minor sandstone
 - Pt 2 WERLUP FORMATION—limestone, sandstone, shale, siltstone, and basal conglomerate
- Point Group
 - Pt 3 Dolerite dyke
- Mount Barron Group
 - Pt 4 KIBBLIP SCHIST—shale, sandstone, phyllite and schist, minor banded iron formation, conglomerate, and minor sandstone
 - Pt 5 KIBBLIP QUARTZITE—massive quartzite and micaceous sandstone, minor scattered quartzite breccia and conglomerate, siltstone (included by overprint)
 - Pt 6 Gravelled gneiss, augen gneiss, minor metagranite; siltstone (included by overprint); subordinate weathered to clay
 - Pt 7 Gravelled rock, argillite and semi-pelitic siltstone (included by overprint); subordinate weathered to sandy clay
 - Pt 8 Gravelled gneiss, foliated, minor migmatite, schist and amphibolite; siltstone (included by overprint); subordinate weathered to clay

GEOLGY

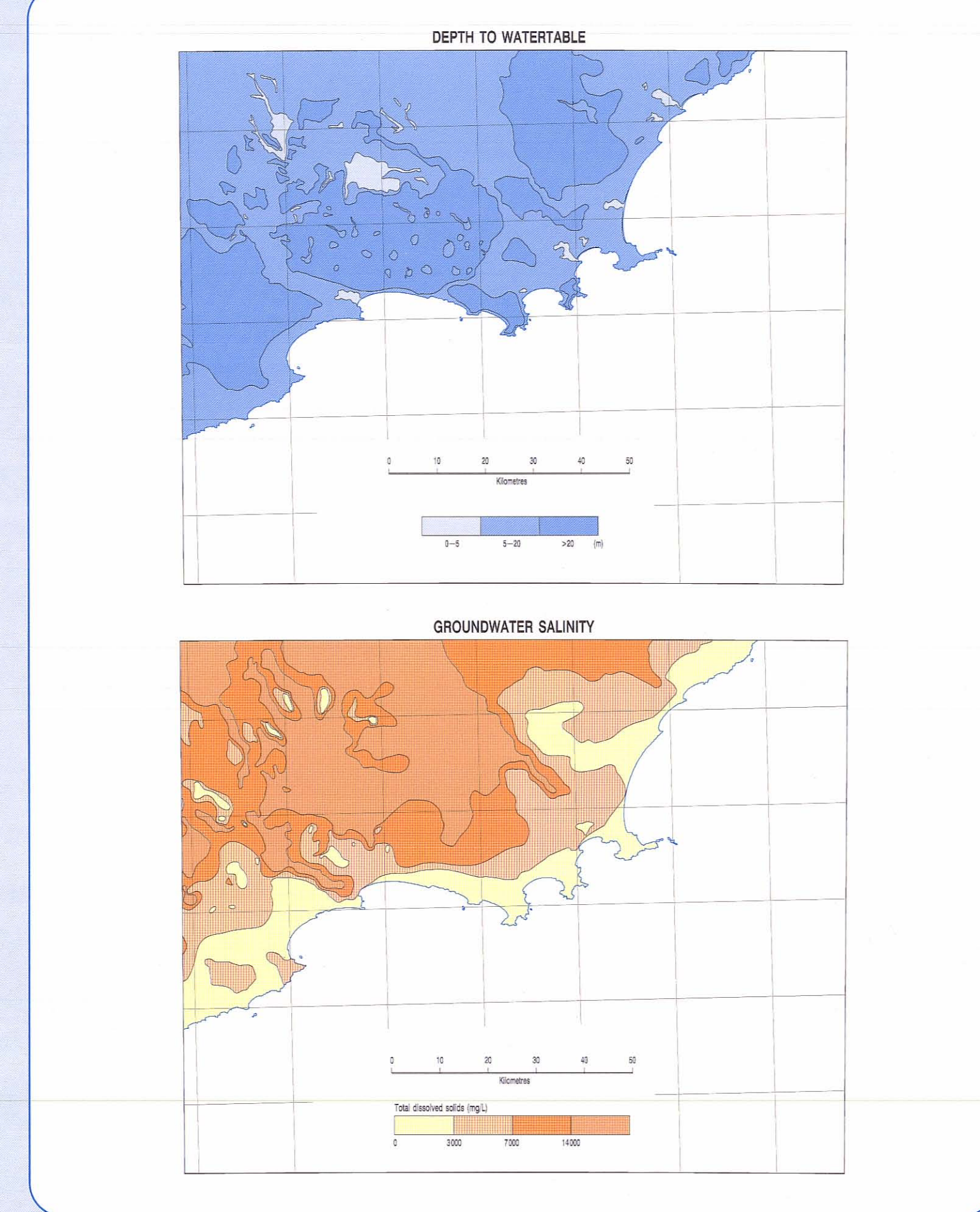
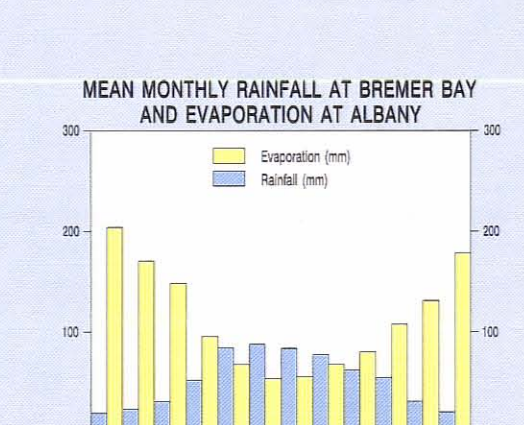
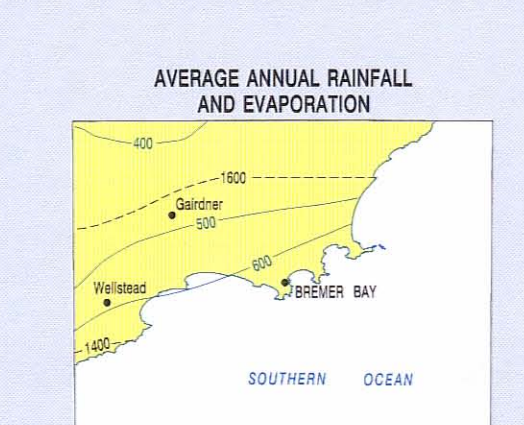
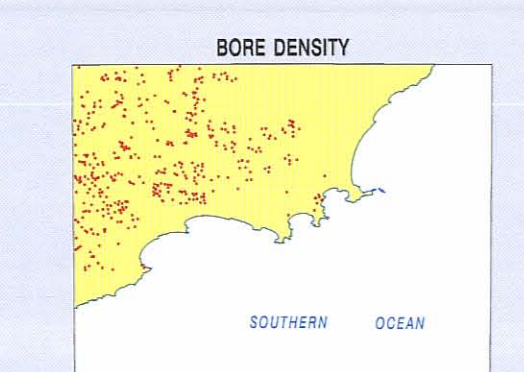
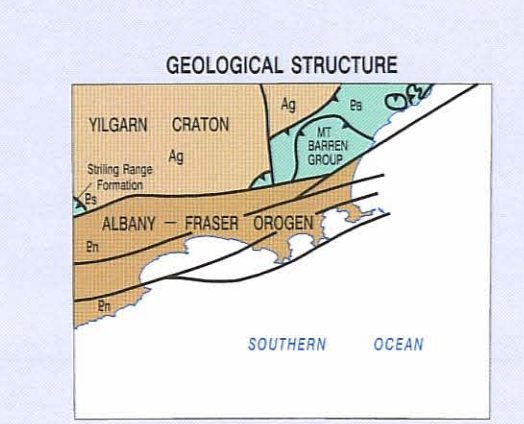
SURFACE WATER FEATURES

GROUNDWATER FEATURES

SYMBOLS

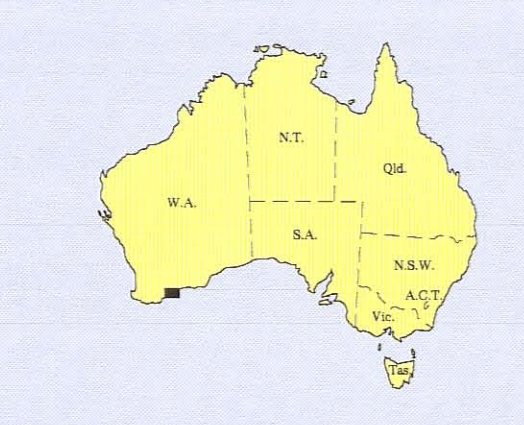
ARTIFICIAL FEATURES

TOPOCADASTRAL INFORMATION



SHEET INDEX

DUNEDIN	NEOGATE	RAVENSHOF
S 50-7	S 50-8	S 50-9
MOUNT BARRER	BREMER BAY	INVESTIGATOR BLANK
ALBANY	SOUTHERN BIGHT	OCEAN
S 50-15	S 50-16	



Hydrogeology by W. Dodson, 1999
 Geology by R. Thon and R.J. Chin, 1984
 Edited by J. Wilson, S. White and G. Lee, Geological Survey of Western Australia
 Cartography by G. Hill and B. Williams, Geological Survey of Western Australia
 Topography from the Department of Land Administration, Sheet SI 50-12, with modifications from geological field survey
 Published jointly by the Geological Survey of Western Australia and the Water and Rivers Commission
 Copies available from the Water and Rivers Commission, The Hydro Centre, 3 Park Street, East Perth, W.A. 6004.
 Phone (08) 278 0200, Fax (08) 278 0201 and the Mailing Information Centre,
 Department of Mines and Energy, 100 Park Street, East Perth, W.A. 6004.
 Phone (08) 252 3888, Fax (08) 252 3884
 This map is also available in digital form
 Printed by Alister Print, Western Australia
 The AGPS recommended reference for this map is: DODSON, W., 1999, Bremer Bay, W.A. Sheet SI 50-12, Western Australia, Water and Rivers Commission, 1:250000 Hydrogeological Series

SCALE 1:250 000

TRANSVERSE MERCATOR PROJECTION
 One false meridian north of the equator (the GDA 84 datum)

1:250000 HYDROGEOLOGICAL SERIES
BREMER BAY
 SHEET SI 50-12
 © Western Australia 1999