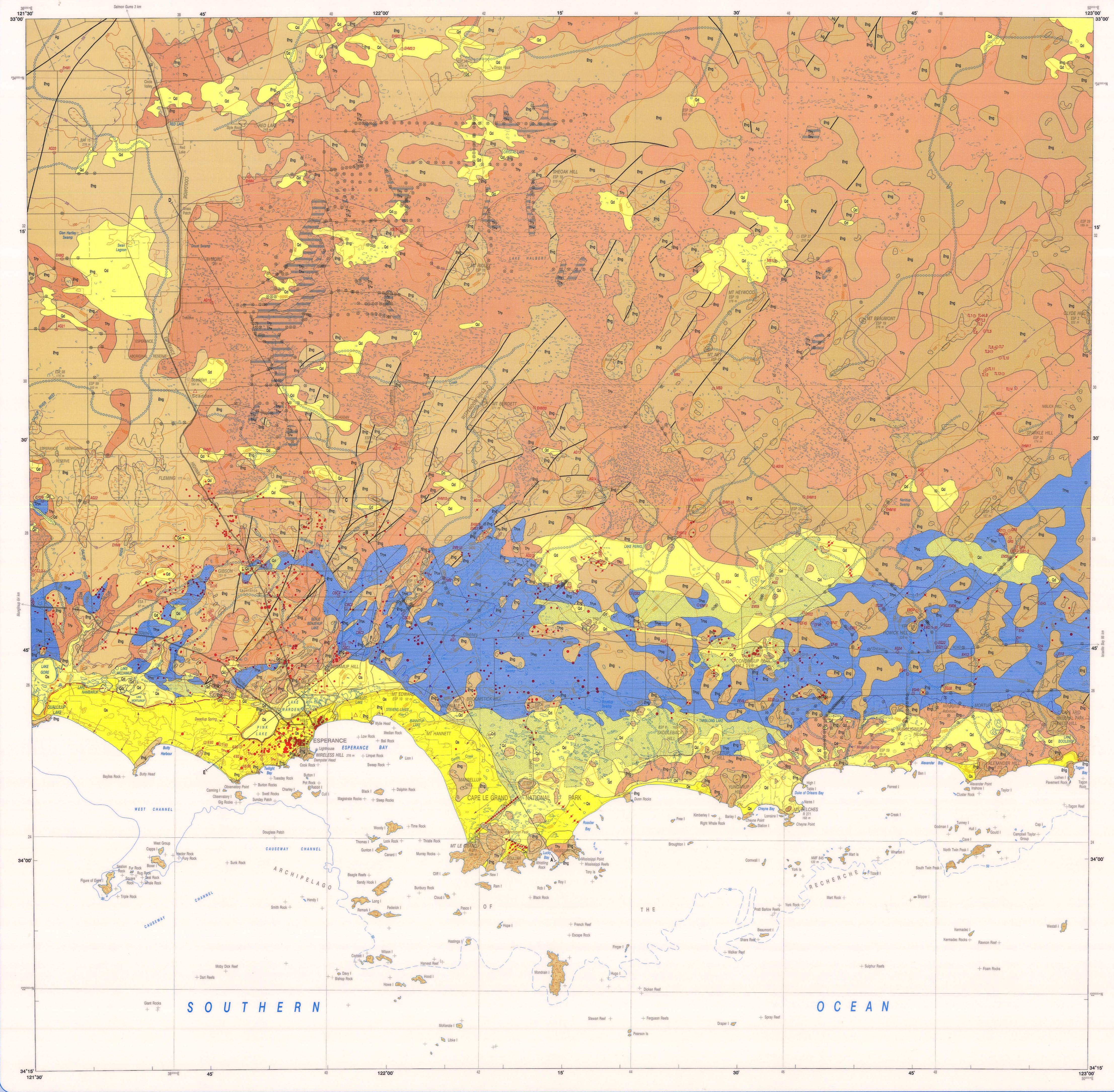


ESPERANCE - MONDRAIN ISLAND  
GEOLOGICAL SURVEY OF WESTERN AUSTRALIA

1:250 000 HYDROGEOLOGICAL SERIES

SHEET SI 51-6 AND PART OF SHEET SI 51-10



**REFERENCE**

**AQUIFER CHARACTERISTICS**

- Surface aquifer - local sedimentary aquifer, minor groundwater resources
- Surface aquifer - local sedimentary aquifer, major groundwater resources
- Sedimentary aquifer - extensive aquifer, minor to major groundwater resources

**HYDROGEOLOGY**

**QUATERNARY**

- Alluvial sand, silt and clay
- Coastal alluvium and marine sand and limestone
- Clayey sandstones

**CRETACEOUS**

**PERMIAN GROUP**

- PALLINUP ALTITUDE
- Woolajarloo Formation

**PROTEROZOIC**

- Granitic gneiss and gneissed rock, unroofed (indicated by contour), weathered to clay
- Granitic rock, unroofed (indicated by contour), weathered to sandy clay

**SYMBOLS**

**GEOLOGY**

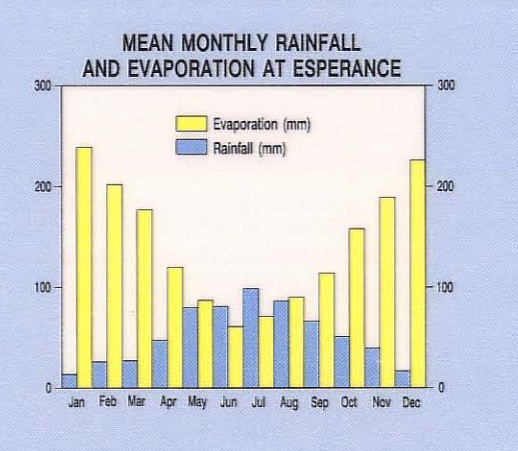
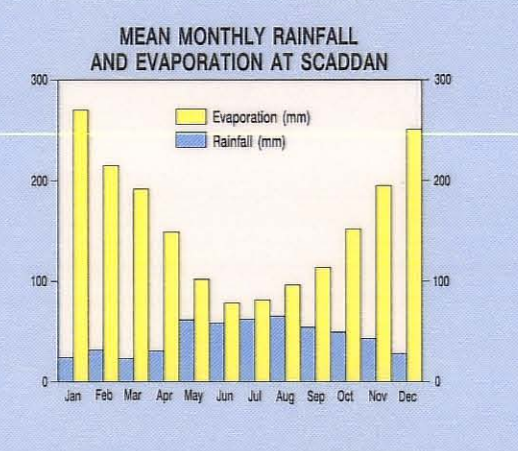
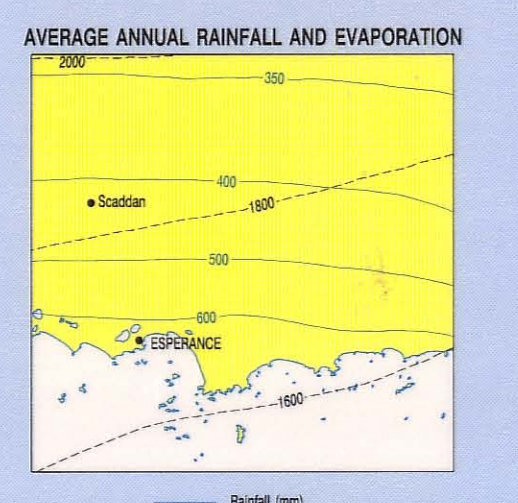
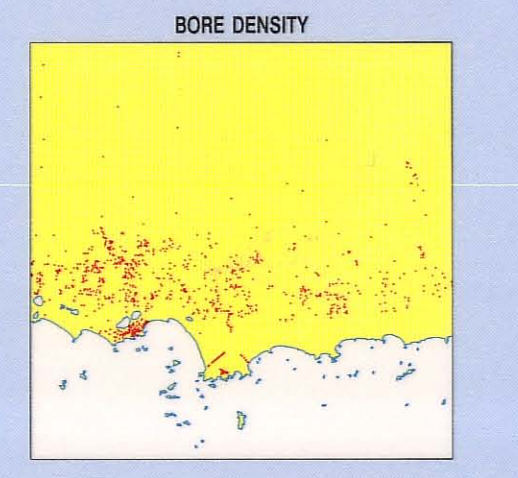
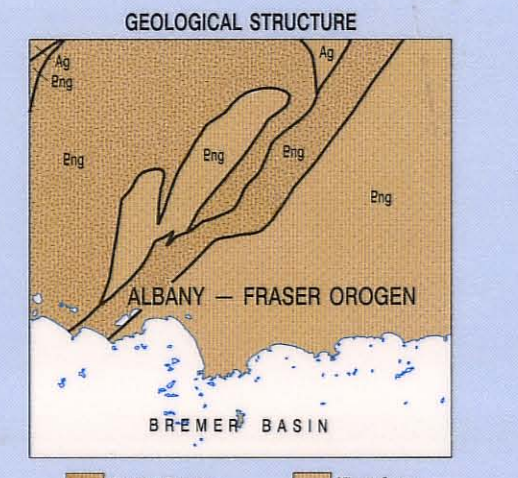
**SURFACE WATER FEATURES**

**GROUNDWATER FEATURES**

**ARTIFICIAL FEATURES**

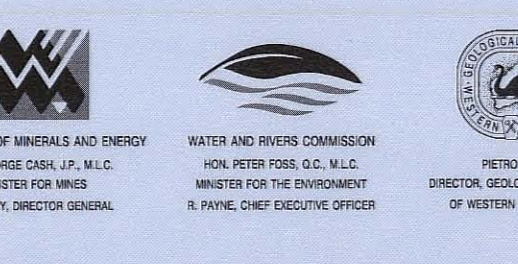
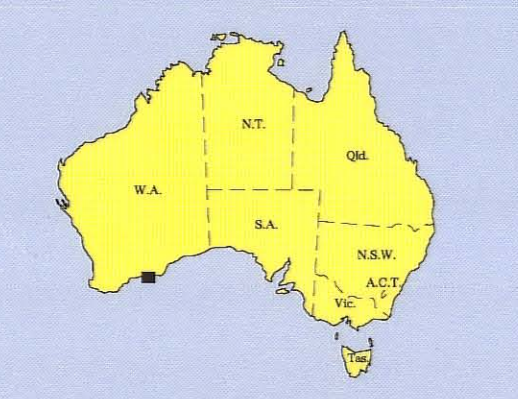
**TOPOCADASTRAL INFORMATION**

**MINING FEATURES**

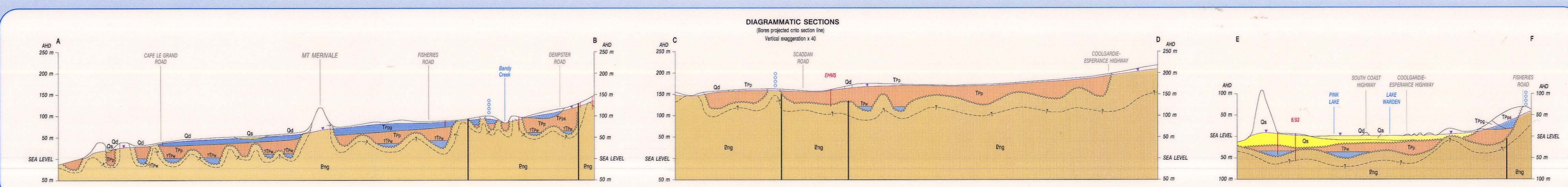


**SHEET INDEX**

LAKE JOHNSTON	MONDRAIN	SALADINA
SI 51-1	SI 51-2	SI 51-3
RAVENSTHORPE	ESPERANCE	WALCOTT
SI 51-4	SI 51-5	SI 51-6
INVESTIGATOR ISLAND	MONDRAIN ISLAND	SOUTHERN OCEAN
SI 51-7	SI 51-8	SI 51-9
		SI 51-10



1:250 000  
 ESPERANCE - MONDRAIN ISLAND  
 SHEET SI 51-10  
 SI 51-6



Hydrogeology by L.A. Beddock 1985-1995  
 Geology compiled by K.H. Morgan, 1987, and J.S. Myers, 1995  
 Edited by C. Bragg, J. Murray, and G. Lakin  
 Cartography by N. Gardner, M. Preece, D. Vans, and B. Williams  
 Topography from the Department of Land Administration Sheet SI 51-4, SI 51-10 with modifications from geological field survey  
 Contour lines from the Department of Land Administration, Esperance, 1985  
 Bathymetric data (1961) supplied by Department of Marine and Harbours, and is not to be used for navigation purposes  
 Published by the Geological Survey of Western Australia, Copies available from the Mining Information Centre, Department of Mines and Energy, 134 Flinders Street, Perth, W.A., 6000, Phone (09) 222 3400, Fax (09) 222 3444  
 This map is also available in digital form  
 Printed by Alhambra Press, Western Australia  
 The recommended reference for this map is BEDDOCK, L. A., 1996, Esperance - Mondrain Island, W.A., Sheet SI 51-6 and part of SI 51-10, Western Australia Geological Survey, 1:250 000 Hydrogeological Series

SCALE 1:250 000  
 TRANSVERSE MERCATOR PROJECTION  
 Grid lines indicate UTM northings of the Australian Map Grid Zone 51

1:250 000 HYDROGEOLOGICAL SERIES  
 ESPERANCE - MONDRAIN ISLAND  
 SHEET SI 51-6 AND PART OF SHEET SI 51-10  
 © Western Australia 1996