

**REFERENCE**

**AQUIFER TYPES**

- Surficial deposits — local aquifers, minor to major groundwater resources
- Sedimentary aquifer in palaeochannels — major aquifer, major groundwater resources
- Sedimentary aquifer in palaeochannels — no groundwater resources (section only)
- Fractured and closely weathered rocks — local aquifers, minor groundwater resources; local supplies from fracture zones and permeable horizons in weathering profile

**HYDROGEOLOGY**

**QUATERNARY**

- Q1 Playa lake sediments — mostly clay
- Q2 Alluvium and colluvium — clay, silt and sand, minor gravel, coarse palaeochannels
- Q3 Calcrete — often with extensive karst development

**PALEOZOIC**

**EARLY TERTIARY**

- Tp Clay — minor sands, restricted to palaeochannels (section only); equivalent to PERICLITUS SHALE
- Tw Sand — restricted to palaeochannels; concolored by palaeochannel clay; equivalent to WOLLABAR SANDSTONE

**PROTEROZOIC**

- Pf Mafic and ultramafic dykes; interpreted

**ARCHEAN**

- Ag Granitic rock, outcrop (indicated by overprint); generally weathered to sandy clay
- Ac Chert and banded iron-formation
- M Metasedimentary rocks
- V Volcanic rocks
- Mf Mafic rocks
- Au Ultramafic rocks and weathered equivalents

**SYMBOLS**

**GEOLOGY**

- Hydrogeological boundary
- Internal hydrogeological boundary
- Extent of weathering (section only)
- Fault or shear zone

**SURFACE WATER FEATURES**

- Intermittent discharge
- Surface water divide
- Playa lake
- Rockhole, granite hole, waterhole
- Spring, soak
- Dam, tank
- Water pipeline

**GROUNDWATER FEATURES**

- Isopotential (in AHD)
- Direction of groundwater flow
- Waterbore (section only)
- Borehole in palaeochannel (TDS < 1000)
- Borehole in palaeochannel (TDS > 1000)

**MINING INFORMATION**

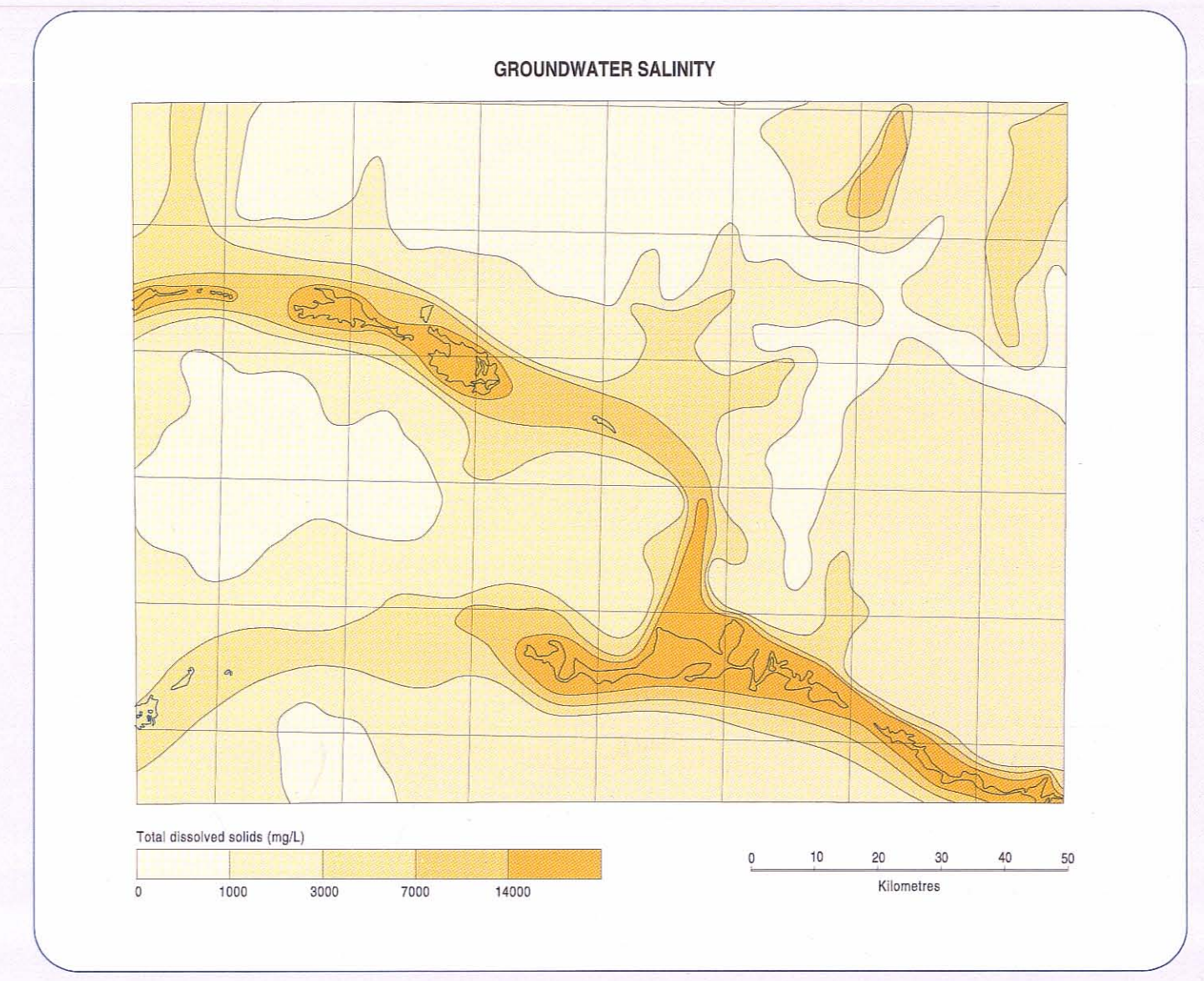
- Underground mine, open-cut
- Mining locality
- Mine name

**ARTIFICIAL FEATURES**

- Production bore, yield > 50 m<sup>3</sup>/day
- Assessment bore, yield < 50 m<sup>3</sup>/day
- Bore
- Well
- Area of detailed groundwater investigation
- WVIC exploratory line
- Mining company exploratory line
- Storage reservoir
- Groundwater pipeline
- Mine dewatering
- Historical mine dewatering

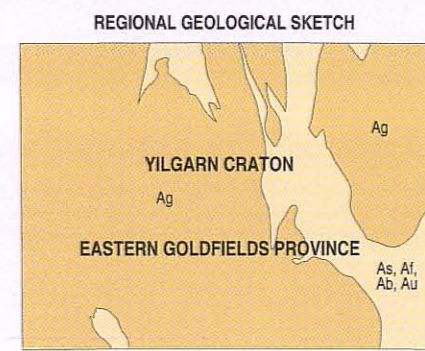
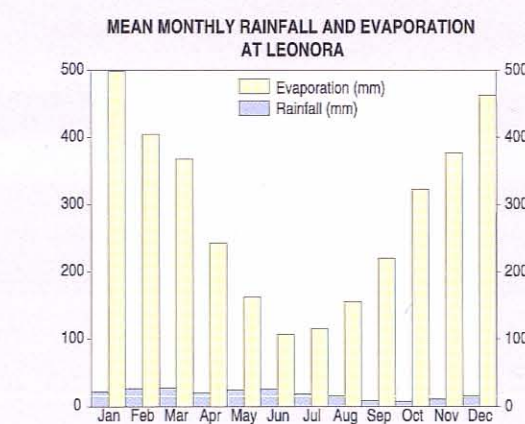
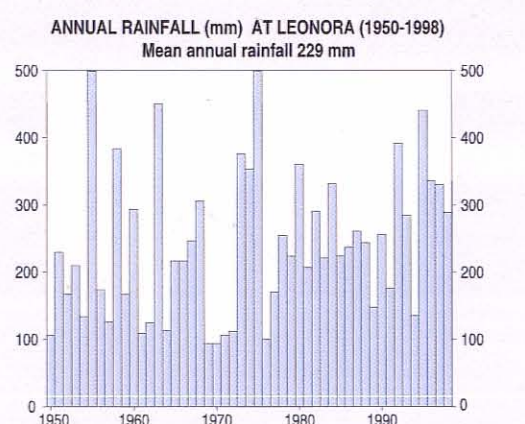
**TOPOCADASTRAL INFORMATION**

- Highway
- Formed road
- Track
- Armed, landing ground
- Levee, population less than 10 000
- Homestead

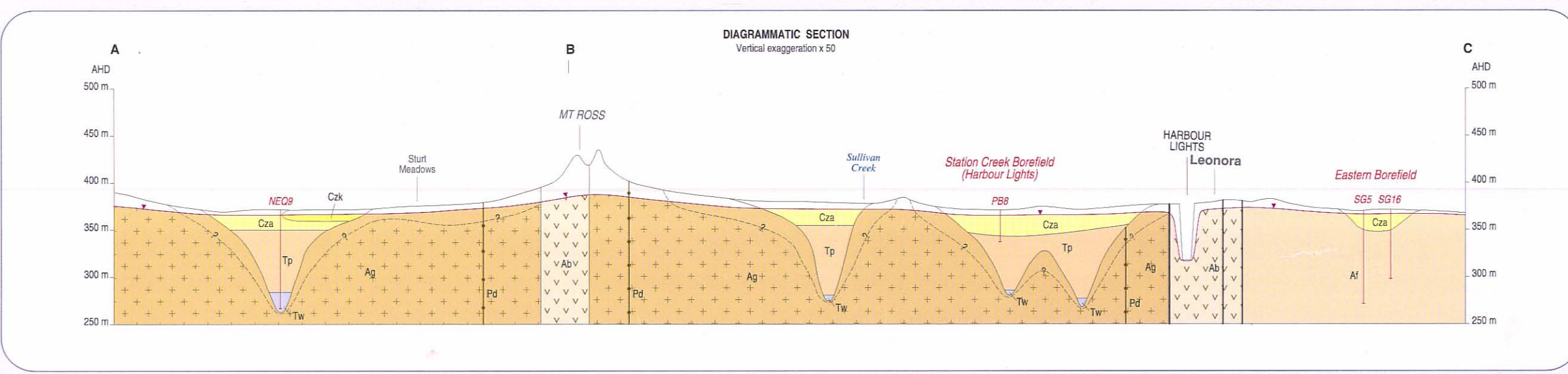


**INDEX TO ADJOINING SHEETS**

SANDSTONE	SH-SAMUEL	SH-QUARTON
SH-80-18	SH-91-13	SH-91-14
YULAMMI	LEONORA	LAWERTON
SH-80-4	SH-51-1	SH-91-12
BARLEE	MENZIES	EDDONGA
SH-80-8	SH-51-5	SH-91-15



Hydrogeology by S.L. Johnson, 1999  
Geology by R. Thom and R.G. Barnes, 1972  
Edited by R. Dubois  
Cartography by K. Prosser, Water and Rivers Commission  
Topography from the Department of Land Administration Sheet SH 51-1 with modifications from geological field survey  
Published by the Water and Rivers Commission  
Copies available from the Water and Rivers Commission,  
The West Centre, 3 Park Street East Perth, WA 6004,  
Phone (08) 9278 0305, Fax (08) 9278 0301  
This map is also available in digital form  
The WRC recommended reference for this map is: JOHNSON, S.L.: 1999  
Leonora, W.A. Sheet SH 51-1, Western Australia, Water and Rivers Commission,  
1:250 000 Hydrogeological Series



GOVERNMENT OF WESTERN AUSTRALIA  
Dr JOE BARNES  
MINISTER FOR WATER RESOURCES

WATER AND RIVERS COMMISSION  
Dr PAULINE  
CHIEF EXECUTIVE OFFICER

SCALE 1:250 000

TRANSVERSE MERCATOR PROJECTION  
Grid lines indicate 20000 metre interval of the Australian Map Grid Zone 51