

LEGEND

LOCAL SCHEME RESERVES

	Conservation Recreation and Natural Landscapes		Public Purposes : Education
	District Roads		Public Purposes : Energy
	Infrastructure		Public Purposes : Health
	Local Roads		Public Purposes : Telecommunications
	Parks, Recreation and Drainage		Public Purposes : Waste Disposal and Treatment
	Public Purposes : Airport		Public Purposes : Water and Drainage
	Public Purposes : Cemetery		State and Regional Roads
	Public Purposes : Community		

LOCAL SCHEME ZONES

	City Centre		Rural
	Commercial		Rural Residential
	Industrial Development		Strategic Industry
	Industry		Tourism
	Mixed Business		Town Centre
	Residential		Urban Development

OTHER CATEGORIES

(see scheme text for additional information)

	Scheme Area Boundary		P2 City Centre Precinct - Commercial
	Local Government Boundary		P3 City Centre Precinct - Entertainment
	R20 R Codes		P1 City Centre Precinct - Retail
	A1 Additional uses		Cossack Historic Town SCA
	R1 Restricted Uses		Dampier Salt SCA
	Airport Noise Restriction SCA		Industry Buffer SCA
	Airport Obstacle Height Limitation Area SCA		Roebourne Flood Management SCA
	P4 City Centre Precinct - Accommodation		DA1 Structure Plan Areas
			Withnell Bay SCA
			No Zone
			Ocean/Waterways

VERSION No 1



Department of Planning,
Lands and Heritage

Whilst all care has been taken to accurately portray the current Scheme provisions, no responsibility shall be taken for any omission or errors in this documentation.

Consultation with the respective Local Government should be made to view a legal version of the Scheme. Please advise the Department of Planning, Lands and Heritage of any omissions or errors in the document at Spatialdata@dph.wa.gov.au

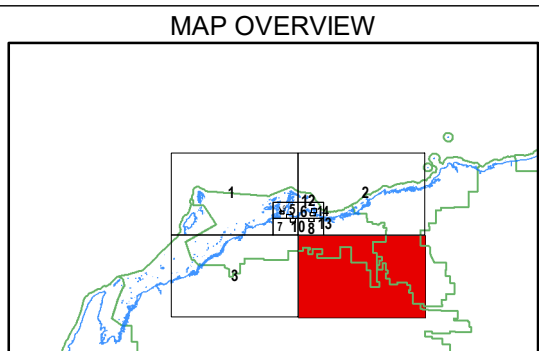
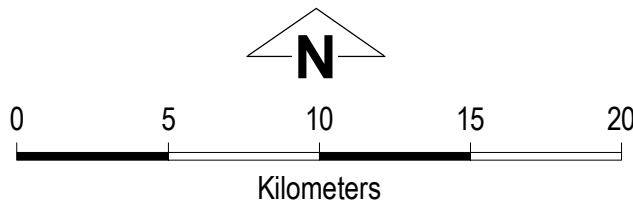
Produced by GeoSpatial Research and Modelling,
Department of Planning, Lands and Heritage.

Base Information Supplied by the Western Australian
Land Information Authority, SLIP 1180-2020-1

City of Karratha

Local Planning Scheme No. 8

(District Scheme)



Authorised: T.Servaas

Plot Date: 16 August 2021

G.Gazette: Tuesday, 22 August 2000

Local Planning Scheme Map No. 4 of 14
MAP: Roebourne South East

City of Karratha

Local Planning Scheme No. 8

(District Scheme)