



Pilbara Environmental Offset Fund

A summary of the Implementation Advisory Groups' meeting on 31 August 2021

Name	Position	Sector they are representing	Attending
Clare Meredith	Secretariat - Department of Water and Environmental Regulation (DWER)	NA	Attending
Nygarie Goyal	Executive Director – Strategy and Engagement - DWER	CHAIR - State government	Attending
Cody Rampant	Manager – Land management north - Department of Planning, Lands and Heritage (DPLH)	State government	Apology
Lesley Gibson	Principal research scientist - Department of Biodiversity, Conservation and Attractions (DBCA)	State government	Attending via Teams
Jo Williams	NRM project manager	Pilbara Mesquite Management Committee (PMMC)	Apology
Blair Parsons	Science and Programs Leader – Western Region, Greening Australia	Natural Resource Management	Apology or attend via Teams
Kimberley Flowerdew	Principal Environment	WA Chamber of Minerals and Energy (CME)	Attending
Phil Davidson	Manager – Environment	Australian Mining Exploration Companies (AMEC)	Attending
Owen Nevin	CEO	Western Australian Biodiversity Science Institute	Attending
Gaye Mackenzie	Consultant – IQ Collective	Consultant	Attending
Taryn Milroy	Yindjibarndi Aboriginal Corporation	Traditional Owners	Attending
Alicia Whittington	Regional Manager - DBCA	DBCA	Attending
Grey Mackay	Contracted to co-design PEOF projects	Land Alliance	Attending
Carolyn Harding	Botanist - DWER	DWER	Attending
Jenna Dodge	Pilbara Development Commission Officer	Pilbara Cultural Land Management Project	Attending

Agenda

Item		Description and Purpose	Who
1.	9.30am	Introductions	Meeting attendees introduce themselves and their role.
2.	9.45am	Program update	(a) Introduction – overview of the program for new IAG members and meeting invitees. (b) Approach to plan, implement and evaluate the program. (c) Vegetation monitoring
3.	11.30am	Planning of projects	(a) Engagement to develop projects (b) Program logic exercise to demonstrate how projects will be developed for coordinated fire. (c) Vegetation mapping product questions
	12:30	LUNCH	
4.	1.00pm	Continuation of item 2	
5.	1.20pm	Security for offsets	How can we protect offset outcomes over the longer term?
6.	1.40pm	Implementation of projects	Update on projects being delivered at Marillana and Woodstock Abydos.
6.	2.00pm	Fund Revenue	Clare to provide update streamlining of state and commonwealth processes.
7.	2.15pm	Actions and meeting close	Summary of meeting actions and discussion of forward agenda items.
8	2.30pm	CLOSE and afternoon tea	



1. Welcome and Introductions

2. Program update

a) Overview for invitees and new members

- Role of the IAG is to provide advice on
 - Investment plan (The IAG provided advice in October 2020)
 - Engagement and co-design plans
 - Project business cases and detailed project plans
 - Evaluation of the program (TBC)

b) Program Design

- Discussion of how the program fits together – from the implementation plan, investment plan, programs of work, and individual projects (Refer slides in Attachment 1 - emailed).
- The IAG broke into two groups and did a project logic exercise – the purpose of this was for the IAG to understand the framework, and this is going to be the approach that the PEOF team use to develop projects and will be helpful to understand as part of evaluation of the program.

c) Vege monitoring progress

- Need to be clear on the different roles of DWER, Traditional Owners, technical specialists etc. Which parts of the AusPlots method can be done and by who?
- What other information needs to be collected to support adaptive management?
- What else do Traditional Owners want to collect for their own purposes?
- Need to be clear with DAWE that the monitoring and evaluation plan – only focuses on vegetation at this stage, because we don't have specific MNES projects in development. If they don't understand why this is, it could jeopardise DAWE continuing to recommend proponents pay into the Fund for EPBC Act MNES.
- PEOF monitoring data needs to go the Atlas of Living Australia database directly
- PCLMP have three years of funding to support Traditional Owners in data monitoring collection training and are looking for real examples of data collection through PEOF as part of that training.

Actions:

IAG to provide advice on the following questions by 20 September–

- What vegetation monitoring are you involved in?
- Are you interested in being part of vegetation monitoring? If so, why?
- What data or support can you provide?
- What support do you need?
- What other condition monitoring activities are happening that you know of that could be helpful?
- Who would we speak to find out more?

3. Planning of projects

a) Engagement

- Six projects currently being co-designed with land managers and Traditional Owners.
- DWER finalising the engagement plan (recommended by IAG at last meeting- Attachment 3) and workplan for 2021/2022 co-design.
- First stage is the development of business cases for each project. DWER will seek IAG advice on each of the business cases.



- Grey talked through who he had engaged with so far and how (e.g. as part of concept plan development in October, then project development between October and March with regional land managers and TO's and then at the Pilbara Cultural Land Management Project forum in March)
- The process to develop projects and with who was discussed – both AMEC and CME recommended bringing in the mining sector early and are happy to help to identify contacts.
- Researchers interested in developing projects to deliver PEOF, should first contact the program manager. There also will be opportunities to engage as part of development projects for MNES. Research needs to be targeted at gaps in knowledge for the management of vegetation or MNES – research projects funded through PEOF must directly relate to environmental matters required to be offset

Actions

- Grey to follow up with AMEC and CME about contacts for 6 projects currently being developed. Resource companies might be able to sponsor and provide in kind support.
- Clare and Carolyn to continue to work with the Pilbara Cultural Land Management Project (PCLMP) to design methods and tools to collect vegetation and biodiversity information with Traditional Owners.

b) Logic Exercise

- The group started working through a fire project logic example (Attachment 2) as an example project.
- The process can help to clarify the problem, who is involved, strategies, and assumptions. For example, pastoralists, DBCA and Traditional Owners will all have different perspectives on how to manage fire but all see it as a potential problem that needs to be managed.
- The group discussed how hubs of interested parties are a good way of getting people connected and delivering integrated projects.
- The group discussed the value of clarifying problems so we don't manage the symptoms rather than the problem itself.

c) Vegetation mapping questions

We did not run through this exercise at the meeting, but Carolyn and Clare did introduce that it was part of concept 3 of the investment plan (Attachment 4 - emailed).

IAG to provide advice on the following questions by 20 September. Please contact Carolyn Harding – Carolyn.Harding@dwer.wa.gov.au for more information if needed –

- How would you use information about vegetation extent, type, and condition?
- What do you know about vegetation in your area of interest in the Pilbara?
- What could you contribute to a vegetation mapping product?
- Who do you partner with already to manage vegetation?
- Who could we partner with to develop vegetation mapping products?
- Do you know of methods already used to map vegetation that could be applied in the Pilbara?
- What do you think is helpful for us to know about vegetation types?
- What do you know about vegetation condition and threats on your lands?



4. Security for Offsets

- S79 lease and joint management arrangements could be a good avenue for PEOF, potentially with joint management through an Indigenous Land Use Agreement or an Indigenous Protected Area.
- API – worth considering the West Hamersley Range Park as a potential site, this was previously proposed as part of an API offset.
- Include opportunities for exclusive native title on unallocated crown land
- There are overlapping aspirations with PCLMP of land access and long-term management which need to be further explored.

Actions:

- Clare to include joint management arrangements (e.g. ILUA and IPA) in the table of security mechanisms for the Fund – include cost and time to establish, level of protection and Cwlth implications.
- Clare to include exclusive native title areas in the hierarchy of opportunities for security for offsets.
- Clare to continue to work with the PCLMP to identify areas where Traditional Owners are pursuing tenure change and or land management arrangements that align with offset activities (e.g., Millstream water reserve).

Project updates

- Grant Project – Budadee project is mapping and removing weeds of national significance at Woodstock Abydos. Their third field trip scheduled for week of 20 September.
- Pilot Project – Protection of Dune PEC at Marillana Station. Clare is meeting with Station manager and Karlka Nyiyaparli Aboriginal Corporation CEO on 20 September to discuss project now that Marillana has been sub-leased by KNAC
- Development of MNES projects – Clare progressing to identify data gaps with Lesley and Stephen and DAWE.

Actions

- Clare to include page on PEOF website that outlines existing projects, new projects under development, and what environmental matters they relate to – this would be useful for demonstrating progress with the Cwlth and the mining sector. **CME and AMEC to provide feedback about what would be useful to include.**
- Lesley to confirm whether Rio have support from their joint venture partners to continue cat baiting project at Yaraloola.

5. Outstanding actions from previous meetings

Action	Who	Status
DWER to engage with DPC regarding the security for offsets plan.	DWER Clare Meredith	IN PROGRESS. Clare to seek input from Sue Meaghan as part of developing the plan.
Follow up with DPIRD on scope of regional biosecurity operational plan	DWER Clare Meredith	IN PROGRESS.
Request nominations for TOs on the IAG through the Pilbara Cultural Land Management forum.	DWER Clare Meredith	IN PROGRESS. Taryn Milroy attended this meeting. He flagged that TOs need further clarity on their role and what they can share with their community, so they can be supported in their role on the IAG. Taryn asked what options there are to enable multiple TOs to attend IAG meetings. Could TO's be nominated for one year and given there are two positions, have them overlap? Then it wouldn't be such a big commitment and would greater representation.



Seek clarity from DAWE on what minimum-security requirements for project	DWER Clare Meredith	IN PROGRESS. Clare is drafting a paper to send to the Cwlth requesting their advice on security mechanisms. She is sending it to the cross-government team on 9 September, and they are providing advice on 16 September before sending to DAWE for comment.
DPLH to provide DWER with a map of the proposed divestment sites and a list of the Traditional Owner groups affected.	DPLH Cody Rampant	IN PROGRESS. DPLH have sent presentation and will send overlay plan, which outlines the bioregion and corresponding tenures and areas of ALT Estate)
DPLH to include Clare in conversations via Sian Hanrahan who is the new ALT divestment director.	DPLH Cody Rampant	IN PROGRESS.
Send Monitoring and Evaluation framework to IAG to consider once complete.	DWER Clare Meredith Carolyn Harding	IN PROGRESS. Clare meeting with DBCA to get feedback and comments on 13 September.
DWER to provide word version of report to IAG for comment.	DWER Clare Meredith	DONE – 20/4/2021
Update project development flowchart (Attachment 3) and circulate to the IAG. IAG advice on defining criteria and parameters for stakeholder engagement to be incorporated into the co-design process going forward.	DWER Clare Meredith	DONE
Provide DPLH with priority area shapefiles (noting that they are a starting point for focusing work)	DWER	DONE
Discuss complementary on-ground monitoring approaches in the Pilbara rangelands with DPIRD	DWER Clare Meredith	DONE. DWER and DPIRD met several times to discuss. Ben Sparrow from TERN also attended to confirm alignment of AusPlots and SLATs methods. DPIRD have shared survey sites to inform selection of monitoring sites. DWER and DPIRD have committed to continue to work together and share information.
DWER to present to the Pastoral Lands Board on the program in June 2021 –	DWER Clare Meredith	DONE. PLB has provided a letter confirming they will emphasise the importance of sharing data and methods for rangeland survey with DPIRD (Appendix B) .
Follow up with DBCA on team and ED contacts for security for offset plan.	Lesley Gibson	DONE. Simon Choo from DBCA now on the security for offsets working group.

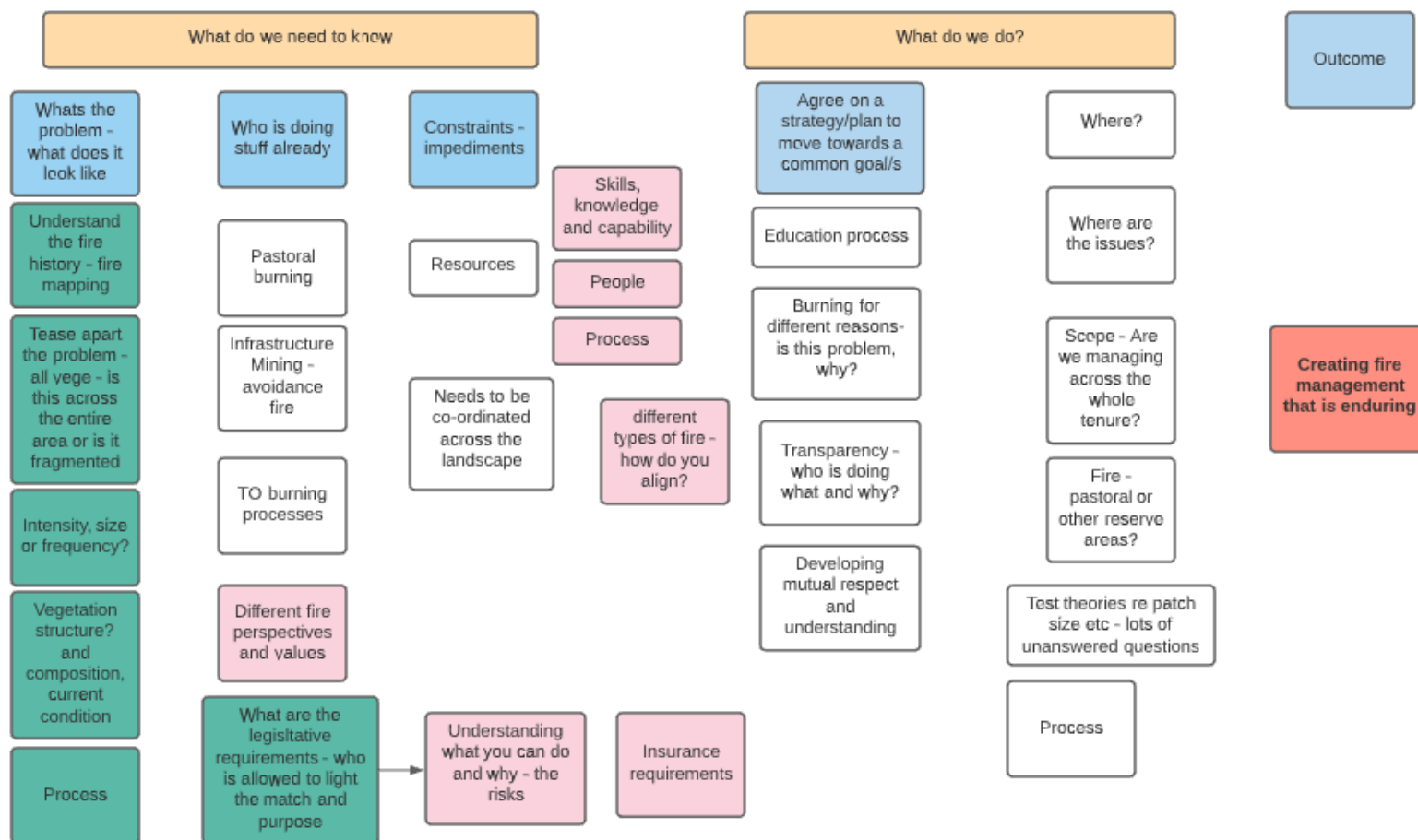
Nygarie Goyal
Chair of the IAG meeting



Attachment 1- IAG meeting slide pack – attached to email.



Attachment 2: Fire logic exercise – where we got to.

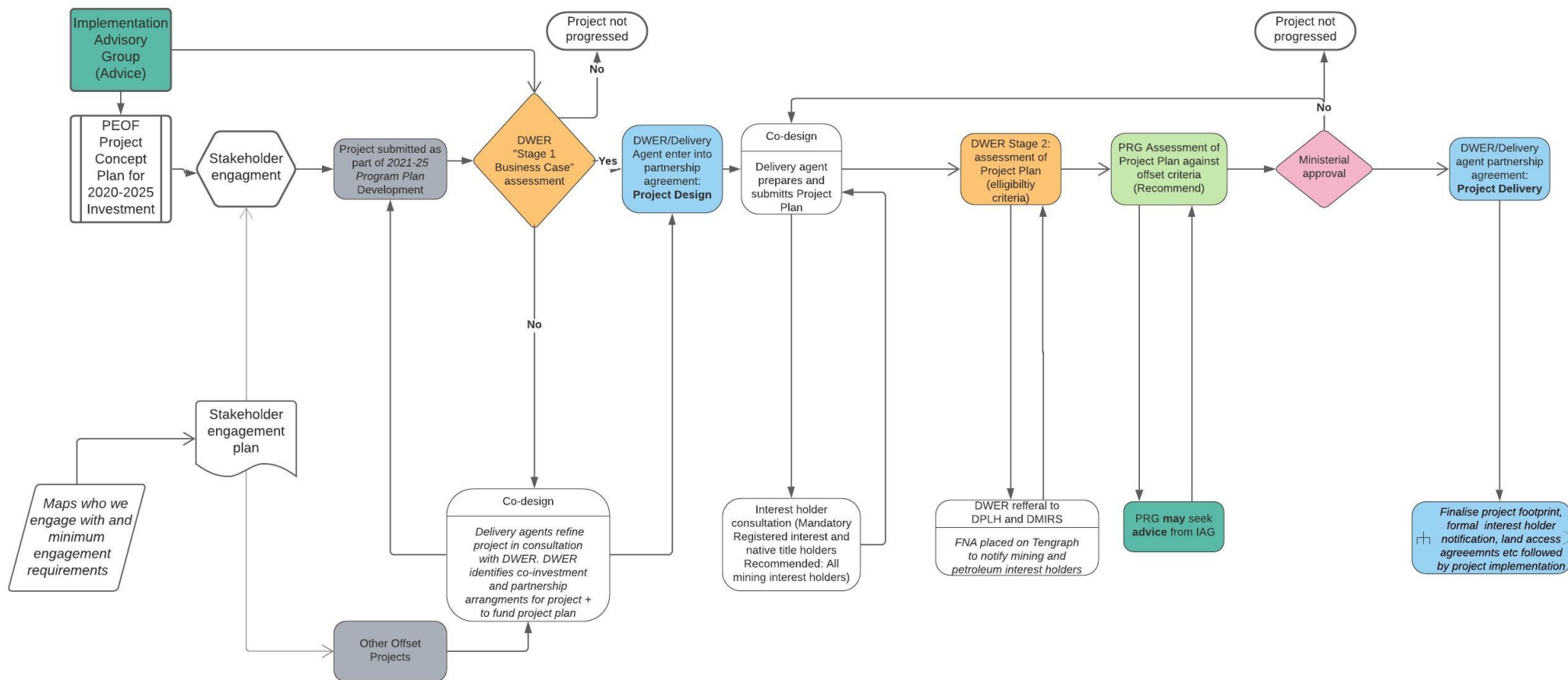




Attachment 3: Flow chart of project development – developed and refined by IAG to guide process and inform IAG of their role.

PEOF 2021-2025 Program Plan

PEOF DWER | March 26, 2021.





Attachment 4: Investment/Concept plan for reference (attached to email)