



Government of **Western Australia**
Department of **Water**

Environmental management of groundwater from the Jandakot Mound

*Annual compliance report to the Office of the
Environmental Protection Authority*

July 2015 – June 2016

Securing Western Australia's water future

Department of Water

June 2017

Department of Water
168 St Georges Terrace
Perth Western Australia 6000
Telephone +61 8 6364 7600
Facsimile +61 8 6364 7601
National Relay Service 13 36 77
www.water.wa.gov.au

© Government of Western Australia

June 2017

This work is copyright. You may download, display, print and reproduce this material in unaltered form only (retaining this notice) for your personal, non-commercial use or use within your organisation. Apart from any use as permitted under the *Copyright Act 1968*, all other rights are reserved. Requests and inquiries concerning reproduction and rights should be addressed to the Department of Water.

ISBN 978-1-925524-11-6 (online)

Acknowledgements

This document was prepared by the Water Allocation Planning Branch with assistance from the Regulation, Water Resource Assessment and Water Information and Modelling branches and regional operations officers of the Swan–Avon Region (Welshpool office).

For more information about this report, contact:

Manager Water Allocation Planning
Water Allocation Planning Branch
Department of Water
PO Box K822
Perth Western Australia 6842

Disclaimer

This document has been published by the Department of Water. Any representation, statement, opinion or advice expressed or implied in this publication is made in good faith and on the basis that the Department of Water and its employees are not liable for any damage or loss whatsoever which may occur as a result of action taken or not taken, as the case may be in respect of any representation, statement, opinion or advice referred to herein. Professional advice should be obtained before applying the information contained in this document to particular circumstances.

This publication is available at our website www.water.wa.gov.au or for those with special needs it can be made available in alternative formats such as audio, large print, or Braille.

Contents1	Summary	1
2 Background		2
2.1 Ministerial statement no. 688		2
2.2 Allocation limits and licensing		2
2.3 The Jandakot groundwater system		4
3 Rainfall		5
4 Groundwater use		6
4.1 Public water supply		6
4.2 Private licensed use		7
4.3 Use that is exempt from licensing		7
5 Compliance		10
5.1 Compliance with water level criteria		10
6 Environmental monitoring, management, research and consultation		12
6.1 Environmental monitoring		12
6.1.1 Wetland vegetation		12
6.1.2 Wetland macroinvertebrates and water quality		13
6.2 Management actions		13
6.2.1 Managing public water supply		13
6.2.2 Managing private licensed use		14
6.2.3 Managing groundwater use exempt from licensing		14
6.2.4 Jandakot groundwater area allocation limit review		14
6.2.5 Update of the Cockburn groundwater area water management plan		15
6.3 Research initiatives		15
6.3.1 Perth Regional Aquifer Modelling System		15
6.3.2 Future climate tool		15
6.3.3 Perth Regional Confined Aquifer Capacity project		15
6.4 Consultation		16
Appendices		17
Appendix A — Water level monitoring results for Ministerial sites on the Jandakot Mound for 2000–2016		18
Appendix B — Audit tables: Environmental conditions, procedures and commitments for the Jandakot Mound		22
Appendix C — History of Ministerial statements for the Jandakot Mound		31
Appendix D — Review of the environmental monitoring program (688: P 14 1)		32
Appendix E — Map information and disclaimer		33

Figures

Figure 1	Location of Jandakot Ministerial sites, public water supply production bores, and private licensed drawpoints.....	3
Figure 2	Annual and average water-year rainfall at Jandakot Airport (BoM site no. 9172)	5

Tables

Table 1	Rainfall, licensing totals, and compliance with Ministerial criteria for the Jandakot Mound	1
Table 2	Public water supply entitlements from all aquifers of the Jandakot groundwater system	7
Table 3	Licensed entitlements for public water supply and private use from the Superficial aquifer in the subareas that impact on Ministerial sites.....	9
Table 4	Summary of sites that are non-compliant with Ministerial criteria for the Jandakot Mound	11

1 Summary

This report presents the Department of Water's compliance with Ministerial conditions and commitments for the Jandakot Mound for the period 1 July 2015 to 30 June 2016 under *Ministerial statement no. 688: Jandakot Mound groundwater resources* (Government of Western Australia 2005a). The report also outlines the environmental monitoring, management, research and consultation the department is doing to sustainably manage the Jandakot groundwater system.

Five sites were non-compliant with absolute minimum water level criteria in 2015–16, which is two more than the previous year. The two additional sites – Shirley Balla Swamp and Lake Banganup – have previously been non-compliant. A combination of well-below average rainfall and an increase in the volume abstracted primarily for public water supply likely contributed to lower Superficial aquifer levels and the additional non-compliances.

In 2015–16, and in response to a review of allocation limits for the Jandakot groundwater area, an additional 1.3 GL licence was issued for public water supply as part of a two-year trial to confirm what volumes can be taken sustainably. We have reduced the trial volume to 1 GL for 2016–17 in response to the additional non-compliances.

Although total private abstraction increased across the Jandakot Mound by 1.12 GL, most of this volume was not abstracted in subareas that affect the additional non-compliant sites.

Table 1 Rainfall, licensing totals, and compliance with Ministerial criteria for the Jandakot Mound

	Jandakot (Superficial aquifer)	
	2014–15	2015–16
Rainfall ¹	673.4 mm	745.3 mm
Public water supply entitlements	2.90 GL	4.20 GL
Private licensed entitlements	36.27 GL	37.39 GL
No. of non-compliant sites ²	3 out of 23	5 out of 23

¹ Rainfall figures are for July–June and taken from Jandakot Airport (BoM station no. 9172).

² For full details of compliance see Table 4 and Appendix A.

2 Background

2.1 Ministerial statement no. 688

Ministerial statement no. 688: Jandakot Mound groundwater resources (Government of Western Australia 2005a) sets environmental water provisions in the form of water level criteria at 23 sites across the Jandakot Mound – 10 wetland sites, nine terrestrial phreatophytic vegetation sites, and four rare flora sites across the Jandakot, Perth, and Cockburn groundwater areas (Figure 1). Phreatophytic vegetation is vegetation that uses groundwater to meet at least part of its water needs.

Ministerial conditions and commitments were first established in 1992 to manage how groundwater is abstracted for public water supply and the expected growth in private licensed use. Since then, the conditions and commitments were revised several times to remove sites where environmental values were lost because of causes other than abstraction (see Appendix A). These causes include the drying climate, land clearing, and disturbance related to changing land use.

The most recent revision in 2005 removed 15 sites and amended water level criteria at five sites. The water level criteria at the current sites represent contemporary environmental water provisions and are suitable for protecting significant environmental values of groundwater-dependent ecosystems on the Jandakot Mound.

2.2 Allocation limits and licensing

The department uses allocation limits, licensing of groundwater abstraction, and monitoring as the main mechanisms to manage groundwater resources.

An allocation limit is the annual volume of water set aside for consumptive use from a water resource. This usually includes:

- water that is available for licensing
- water we account for that is exempt from licensing, including water used by domestic garden bores
- water we set aside for future public water supply.

Water for the environment is not included in the allocation limit. This is because it is left in the system and considered a non-consumptive use.

Allocation limits are set considering recharge estimates, modelling, environmental objectives, and benefits of groundwater use. The limits guide water availability for individual licence assessments. The department also guides the appropriate use of domestic garden bores through sprinkler restrictions and identifying the areas that are unsuitable for the installation of new bores.

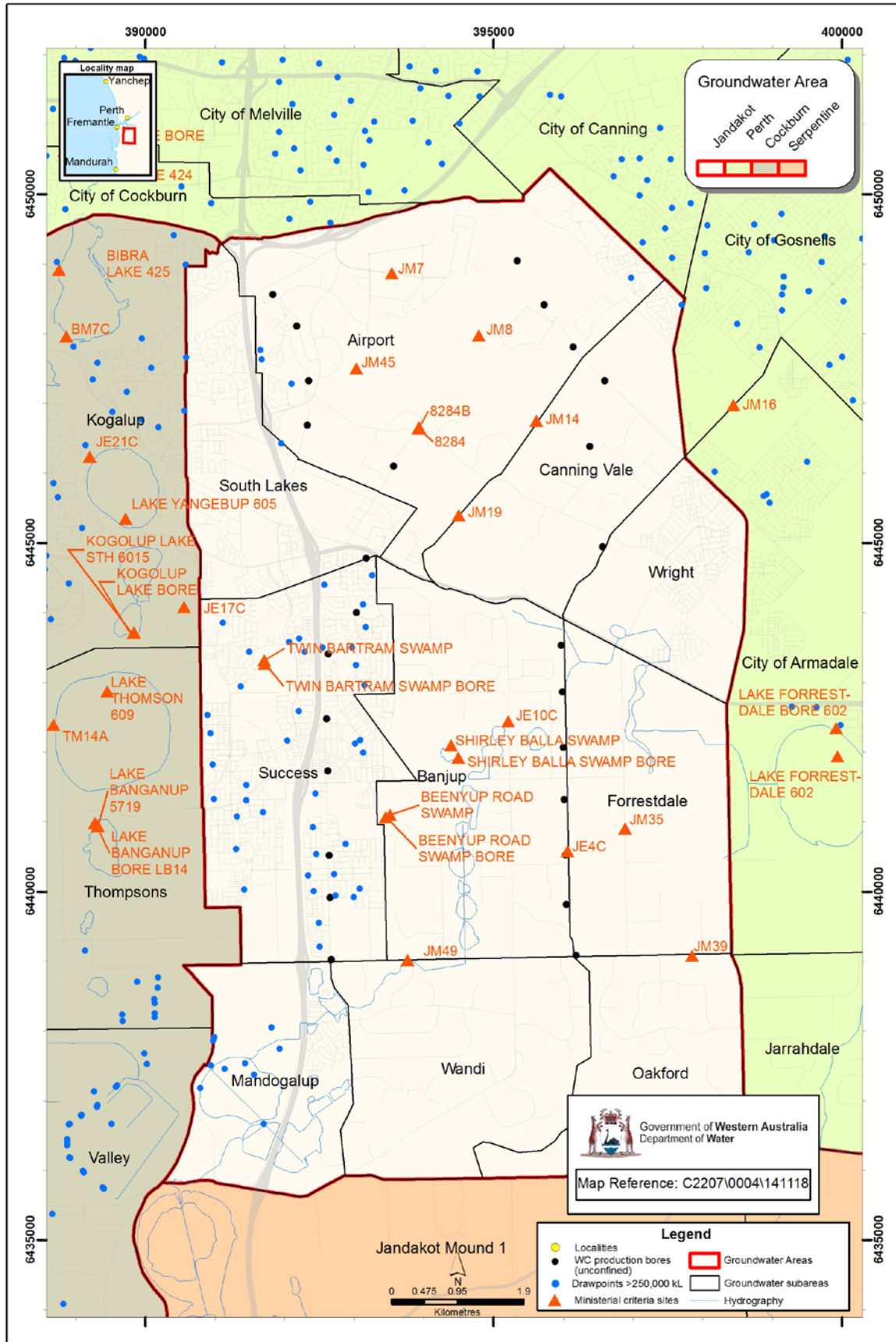


Figure 1 Location of Jandakot Ministerial sites, public water supply production bores, and private licensed drawpoints

2.3 The Jandakot groundwater system

The Jandakot groundwater system is located to the south of Perth, extending to Rockingham in the south, the coast to the west, the Swan–Canning River to the north, and close to the Darling Scarp to the east. The system comprises three main aquifers:

- the shallow, unconfined Superficial (watertable) aquifer known as the Jandakot Mound
- the deep, partially-confined Leederville aquifer
- the deep, mostly-confined Yarragadee aquifer.

Most of the Jandakot Mound is separated from the deeper Leederville aquifer by a confining layer of Kardinya shale that extends under all of the Ministerial sites except Lake Forrestdale. This separation means that abstraction from the Superficial aquifer has a greater impact on Jandakot Mound wetlands than abstraction from the deep aquifers.

Groundwater levels across the Jandakot Mound have generally declined over the last 40 years, but at a slower rate than seen across the Gnangara Mound, north of the Swan River. In many areas of the Jandakot Mound water levels have improved over the last five years because of some relative improvements in rainfall compared to extreme dry years like 2010–11; localised management of abstraction; and increased recharge rates from urbanisation.

3 Rainfall

Groundwater levels in the Superficial aquifer depend on recharge from rainfall. Across south-west Western Australia there has been a general trend of declining annual rainfall since the mid 1970s (Figure 2). CSIRO’s investigation of climate change (Bates et al. 2010), as well as relevant global climate change models, predicts continued rainfall reduction in this region.

Over the 2015–16 reporting period, rainfall at the Bureau of Meteorology’s (BoM) Jandakot Airport station was 745.3 mm – well below the long-term average (842.2 mm) and just above the short-term, 10 year average (740.4 mm) (Figure 2).

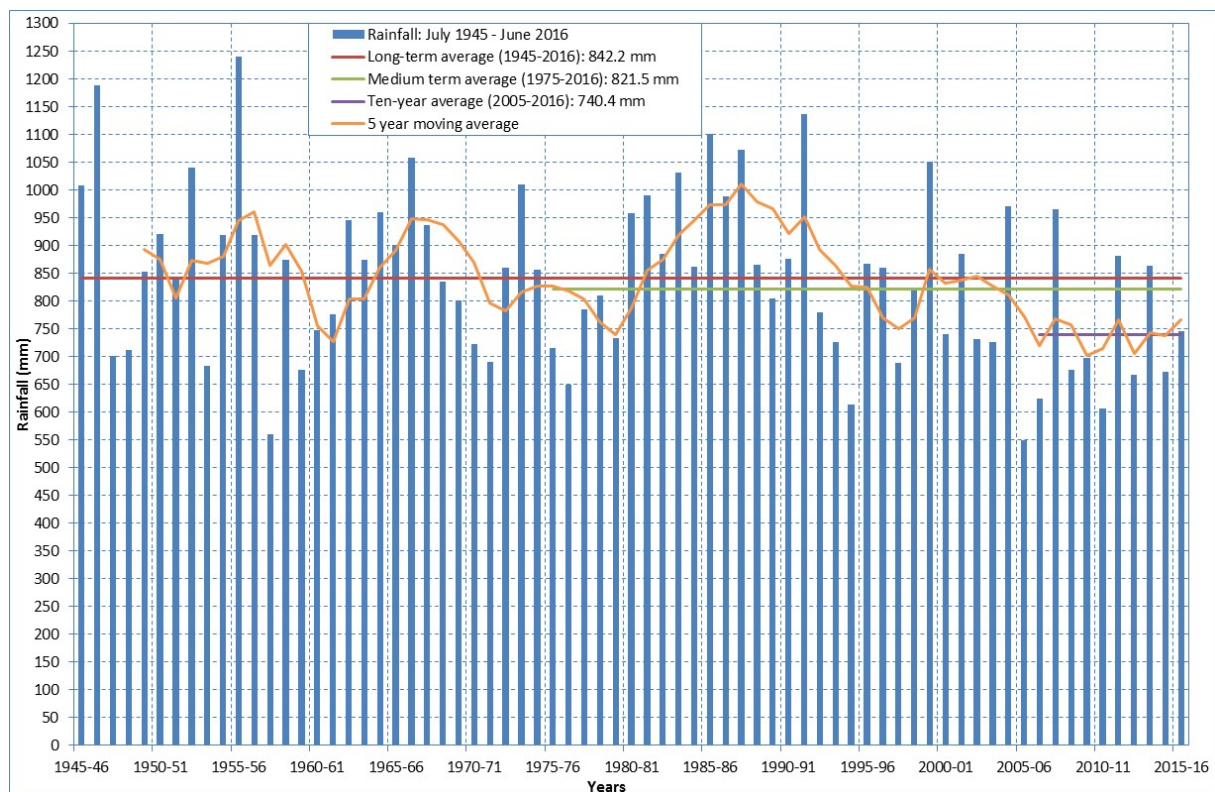


Figure 2 Annual and average water-year rainfall at Jandakot Airport (BoM site no. 9172)

4 Groundwater use

The Jandakot groundwater system provides water for public open space, agriculture, and industry, contributes to Perth's public water supply, and supplies water for domestic garden bores.

This report summarises allocation limits, licensed entitlements, and estimates of use exempt from licensing for subareas on the Jandakot Mound where groundwater abstraction impacts on Ministerial sites.

Most of the Ministerial sites are located in the Jandakot groundwater area with the remaining sites located in the Cockburn and the Perth South groundwater areas (Figure 1). The hydrogeology of the Jandakot Mound means that sites within the Jandakot groundwater area are most impacted by abstraction from within that area. Sites located in the Cockburn and the Perth South groundwater areas, to the west and east respectively, are also impacted by abstraction from the Jandakot groundwater area because groundwater flows from the Jandakot groundwater area into these areas. They are also impacted by local abstraction in the Cockburn and the Perth South groundwater areas.

4.1 Public water supply

The Department of Water licenses the Water Corporation to take groundwater from the Gnangara and Jandakot groundwater systems for Perth's public water supply. Abstraction from these systems is an integral part of Perth's Integrated Water Supply Scheme.

A total of 17.05 GL was licensed for public supply from all aquifers of the Jandakot system for 2015–16, including an additional licence of 1.3 GL from the Superficial aquifer (Table 2). The licence was advertised at a volume of 1.5 GL but was amended during the water year to 1.3 GL. We are continuing to work with the Water Corporation to confirm whether this volume can be taken sustainably in the long term. The increases in each subarea are within the allocation limits set in a recent allocation limit review for the Jandakot groundwater area (Table 3).

The Water Corporation recently upgraded the Jandakot Groundwater Treatment Plant, so that up to 6 GL/year can be taken from a new bore in the Yarragadee aquifer. In 2015–16 5.75 GL was licensed to this bore. The presence of the Kardinya Shale means that volumes licensed from the Leederville and Yarragadee aquifers are unlikely to impact on wetlands on the Jandakot Mound. Licensed entitlements for public water supply are further broken down into groundwater subareas for the Superficial aquifer in Table 3 (section 4.3).

Table 2 *Public water supply entitlements from all aquifers of the Jandakot groundwater system*

Aquifer	Public water supply entitlements GL	
	2014–15	2015–16
Superficial	2.90	4.20
Leederville	6.45	6.40
Yarragadee ¹	4.45	6.45
TOTAL	13.80	17.05

¹ Includes groundwater licensed from the new Yarragadee bore in the Jandakot groundwater area (3.8 GL in 2014–15 and 5.75 GL in 2015–16) and volumes licensed to bore MR17 in the Perth South groundwater area (0.65 GL in 2014–15 and 0.7 GL in 2015–16).

4.2 Private licensed use

Most of the groundwater licensed from the Superficial aquifer is for private use. The main usage types are parks, gardens and recreation, agriculture, industry, and commercial uses.

Over the reporting period, private licensed entitlements from the Superficial aquifer increased by 1.12 GL (tables 1 and 3). The increases are within current allocation limits except for the Wright subarea which became over-allocated during 2015–16 because of an approval of a short-term licence to enable progression of a development in the area. Table 3 (section 4.3) shows private licensed entitlements for the groundwater subareas related to the Jandakot Ministerial sites.

4.3 Use that is exempt from licensing

When we review allocation limits, we estimate and account for groundwater that is exempt from licensing. To account for this volume we use:

- water use surveys and local knowledge
- estimates of the number of properties that are likely to have domestic bores, from local government plans and land zoning
- information on the subdivision potential of the properties (current and future)
- information on potential changes to recharge, such as from land-use changes (e.g. bushland developed into urban)
- water use and future requirements of Commonwealth government agencies.

In 2015–16 the department reviewed exempt use as part of our allocation limit review for the Jandakot groundwater area and also estimated the amount used across the whole of the Jandakot Mound.

We now estimate that 2.39 GL/year is abstracted for uses exempt from licensing in the Jandakot groundwater area. This increase from our previous estimate of 1 GL/year is because of better accounting techniques for stock and domestic use on semi-rural and rural blocks.

The amount taken in the Jandakot groundwater area is about 10 per cent of the total estimated water use for exempt stock and domestic garden bores across the whole of the Jandakot Mound, which is estimated to be around 24 GL/year.

Table 3 Licensed entitlements for public water supply and private use from the Superficial aquifer in the subareas that impact on Ministerial sites

Groundwater area	Subarea	Ministerial criteria site present?	Allocation limit GL/year	Public water supply entitlements ⁴ GL			Private licensed entitlements ⁶ GL	
				2014–15	2015–16	Future water reserve ⁵	2014–15	2015–16
Jandakot ¹	Airport	Yes	2.64	0.70	1.20	Yes	0.83	0.87
	Banjup	Yes	2.00	0.43	0.41	Yes	0.39	0.40
	Canning Vale	No	1.10	0.32	0.98	Yes	0.07	0.07
	Forrestdale	Yes	1.30	0.15	0.15	Yes	0.85	0.87
	Mandogalup	No	2.05				1.31	1.58
	Oakford	Yes	0.55				0.07	0.08
	South Lakes	No	0.82				0.57	0.57
	Success	Yes	3.91	1.30	1.46	Yes	0.99	1.19
	Wandi	No	0.88				0.30	0.31
	Wright	No	0.96				0.82	1.08
<i>Total for Jandakot groundwater area</i>			16.21	2.90	4.20		6.19	7.01
Perth ²	City of Armadale	Yes	4.00				3.32	3.93
	City of Canning	No	3.50				2.74	2.74
	City of Cockburn	Yes	1.00				0.54	0.54
	City of Gosnells	No	5.50				3.35	3.28
	City of Melville	No	5.50				4.22	4.08
<i>Total for Perth South groundwater area</i>			19.50	0.00	0.00		14.16	14.58
Cockburn ³	Kogalup	Yes	11.46				10.16	10.08
	Thompsons	Yes	8.70				5.75	5.73
<i>Total for Cockburn groundwater area</i>			20.16	0.00	0.00		15.91	15.80
Total for Jandakot subareas that affect Ministerial criteria sites			55.87	2.90	4.20		36.27	37.39

1 Allocation limits for the Jandakot groundwater area were updated in 2014–15.

2 Allocation limits for subareas in the Perth South groundwater area, to the south of the Swan River, were reviewed in 2007.

3 The allocation limits for the Cockburn groundwater area are under review.

4 Public water supply information is from both the department's Water Resources Licensing System and annual reports submitted to the department as a condition of the Water Corporation's licences.

5 Where groundwater is reserved for future public water supply, the reserve volumes are not included in the licensed entitlement figures presented. The reserved volumes were amended in a review of allocation limits in the Jandakot groundwater area in 2014–15.

6 The source of private licensed entitlement data is the department's Water Resources Licensing System (2014–15 report run on 30 June 2015, 2015–16 report run on 1 July 2016).

Also note:

Up-to-date figures on water availability are available from the Swan–Avon or Kwinana Peel regional offices. Figures are rounded to two decimal places.

1 GL = 1 000 000 kL.

5 Compliance

The conditions and commitments that the Department of Water is required to comply with from *Ministerial statement no. 688: Jandakot Mound groundwater resources* (Government of Western Australia 2005a) are shown in Appendix A and B (the ‘audit tables’).

5.1 Compliance with water level criteria

Ministerial statement no. 688 sets water level criteria at 23 sites across the Jandakot Mound (Figure 1). There are 10 wetland sites, nine terrestrial (phreatophytic) vegetation monitoring sites, and four rare flora sites. Some criteria sites have more than one water level criterion and can be non-compliant with multiple criteria.

Water level criteria include:

- absolute minimum levels – these are used as the main indicator for compliance from year to year
- levels allowed to fall between a preferred minimum and the absolute minimum in two out of six years to replicate natural drying cycles – these are referred to as ‘other’ water level criteria in this report and provide information on water level trends
- rate of decline and time of drying – these are also referred to as ‘other’ water level criteria in this report.

In the 2015–16 reporting period five sites were non-compliant with absolute minimum water level criteria, which is two more than the previous year (Table 4). Consistent with previous years, four sites were non-compliant with ‘other criteria’.

A combination of well-below average rainfall over the 2015 winter, and the increase in the volume abstracted primarily for public water supply, are likely to have contributed to the lower Superficial aquifer levels and the additional non-compliances. Specific management and mitigation actions in response to non-compliance are described in section 6 below. Details for individual sites can be found in Appendix A.

Table 4 Summary of sites that are non-compliant with Ministerial criteria for the Jandakot Mound

Year	Absolute minimum water level criteria			Other water level criterion		
	Wetlands	Terrestrial and rare flora vegetation	Total non-compliant	Wetlands	Terrestrial and rare flora vegetation	Total non-compliant
2014–15	North Lake Bibra Lake Lake Forrestdale	None	3 out of 23	Bibra Lake Thomsons Lake Lake Forrestdale Shirley Balla Swamp	None	4 out of 12
2015–16	North Lake Bibra Lake Lake Forrestdale Shirley Balla Swamp Lake Banganup	None	5 out of 23	North Lake Bibra Lake Lake Forrestdale Shirley Balla Swamp	None	4 out of 12

6 Environmental monitoring, management, research and consultation

6.1 Environmental monitoring

The Department of Water employs expert environmental consultants to undertake environmental monitoring in line with the commitments in *Ministerial statement no. 688: Jandakot Mound groundwater resources* (Government of Western Australia 2005a).

The department reviewed the environmental monitoring program in 2009 and 2013 (see Appendix D) to improve cost effectiveness and efficiency. In 2015–16 the program included monitoring wetland vegetation, wetland macroinvertebrates, and water quality.

Ecological condition is affected by a number of factors that influence water levels, including abstraction, fire, and disturbance from changing land use. We use the results of environmental monitoring to continually improve our understanding of the relationship between water levels and ecological condition. We also use the information to manage abstraction at priority locations, reducing abstraction where it is likely to improve ecological condition.

6.1.1 Wetland vegetation

In 2015–16 the condition of wetland vegetation was monitored during spring at Banganup Lake, Beenyup Road Swamp, Lake Forrestdale, North Lake, Shirley Balla Swamp, Thomsons Lake, and The Spectacles. Water levels and wetland vegetation condition generally declined compared to the previous year (Buller et al 2016).

At the four sites where water levels declined from the previous year (Beenyup Road Swamp, Shirley Balla Swamp, North Lake, and Thomsons Lake):

- canopy condition decreased at Beenyup Road Swamp
- there was increased exotic cover at North Lake
- there were changes in species composition at Beenyup Road Swamp.

Recent fires have impacted Banganup Lake and Shirley Balla Swamp, significantly reducing canopy condition and resulting in mortalities of mature *Melaleuca preissiana* and *Eucalyptus rudis* at Banganup Lake, and a combined total of at least 25 mortalities of *Melaleuca raphiophylla* and *Melaleuca preissiana* at Shirley Balla Swamp (Buller et al 2016).

6.1.2 Wetland macroinvertebrates and water quality

In 2015–16 Forrestdale Lake, Thomsons Lake, and Shirley Balla Swamp were surveyed for aquatic macroinvertebrates. Water quality was measured at these three wetlands and also at Kogalup Lake South.

The results of the monitoring showed stable conditions across the wetlands and no concerning trends. Water levels at the time of monitoring were adequate to support rich macroinvertebrate communities at the wetlands monitored and the data suggested that their conservation values are being sustained (Harms and Curran 2016).

Invertebrate richness at Forrestdale Lake was slightly higher than last year. Counts for Shirley Balla Swamp and Thomsons Lake were slightly lower; however, all counts were above the long-term mean recorded for these wetlands (Harms and Curran 2016).

Kogalup Lake South was more alkaline than previously reported and Shirley Balla Swamp became more acidic, returning to the low pH levels seen before 2009. Forrestdale Lake and Shirley Balla Swamp contained more sulphur and sulphate while phosphate concentrations were comparable to last year (Harms and Curran 2016).

6.2 Management actions

The department's primary approach to non-compliance on the Jandakot Mound is to manage abstraction very closely in areas where it can help improve groundwater levels and ecological condition at non-compliant sites.

6.2.1 Managing public water supply

As outlined in the *Gnangara groundwater areas allocation plan* (DoW 2009a), the addition of the Southern Seawater Desalination Plant to the Integrated Water Supply Scheme triggered a change in how groundwater for public water supply is allocated. In line with the plan, the department has reduced groundwater allocations for the scheme from 145 to 120 GL/year from 2012–13 to 2016–17, from existing infrastructure on the Gnangara and Jandakot systems.

Within the 120 GL/year allocation, we reduced the licensed volume from the Superficial aquifer of the Jandakot system in areas where the reductions would most benefit water levels and ecological condition at non-compliant sites.

In 2015–16 an additional 1.3 GL from the Superficial aquifer was licensed to the Water Corporation from the public water supply reserve as part of a two-year trial. The trial followed the department's review of allocation limits in the Jandakot groundwater area and has been designed to confirm sustainable volumes of abstraction. In response to the increase in non-compliance in 2015–16, we have since reduced the volume for the trial to 1 GL in 2016–17. We will assess whether the additional licence volume will be continued at the end of 2016–17.

6.2.2 Managing private licensed use

Private licensed use is monitored through on-ground compliance inspections, meter audits, water use surveys and licence renewal process. We use this work to check that groundwater use is within licence entitlements and that site activities are authorised.

The department has prioritised its licence compliance and enforcement activities to consider the conditions and commitments in *Ministerial statement no. 688*. This included expanding the scope of our licensing compliance plan to focus on areas potentially affecting Ministerial sites.

The department also manages the use of groundwater by private licensees in other ways. This includes working with local governments, urban developers and other licensees that use large volumes, to improve water use efficiency, reduce demand for groundwater, assess water needs for future public open space, and assess water supply options.

6.2.3 Managing groundwater use exempt from licensing

Domestic garden bores are generally supported (where suitable and used efficiently) because they reduce demand on scheme water with minimal local impact. To help manage this abstraction, the department provides a garden bore use guideline in that emphasises water conservation and efficiency. Further information on garden bore suitability can be found on the Perth Groundwater Map on the departments' website.

Garden bores are not encouraged in areas where there is a risk of acid sulfate soils, poor water quality, or low yields. These areas are identified as unsuitable in the bore suitability map.

To help preserve water resources and encourage water use efficiency by the community, water restrictions on the use of garden bores were initiated in 2007 under the *Rights in Water and Irrigation Act Exemption (Section 26C) Order 2007*. In 2010 the total winter sprinkler ban also came into effect under the *Water Agencies (Water Use) By-laws 2010*. These by-laws restrict the use of domestic garden bores to a roster of three days a week, with a total ban during winter.

The annual winter sprinkler ban is now in its seventh year and has become an accepted part of the community's water use calendar.

6.2.4 Jandakot groundwater area allocation limit review

In 2014–15 the department refined allocation limits for the Jandakot groundwater area. The changes to the allocation limits considered the drying climate and align with the environmental objectives in *Ministerial statement no. 688*. The new limits reduce the risk of abstraction causing an increase in non-compliance. The review has reduced the amount of groundwater available for licensing in the area by about 8 GL/year, without impacting on current groundwater entitlements.

6.2.5 Update of the Cockburn groundwater area water management plan

The department will be replacing the *Cockburn groundwater area water management plan* (DoW 2007a) in 2017. A key objective of the updated plan is to meet Ministerial criteria at Bibra Lake, Lake Yangebup, Kogalup Lake, Thomsons Lake, and Lake Banganup sites under a drying climate to 2030.

The refined allocation limits in this next plan will also provide certainty to industry on the availability of groundwater under the drying climate to 2030. The update was being completed in line with the release of the *Western Trade Coast Heavy Industry Water Supply Strategy* (DoW 2016), which outlined the cost and benefit of all water supply options for industrial growth in the area. These options include managed aquifer recharge, non-potable scheme supply such as wastewater reuse, and more efficient use of existing groundwater abstraction across the plan area.

6.3 Research initiatives

The department, together with research partners, is completing a number of major projects that will help us to continually improve and adapt how we manage groundwater resources.

6.3.1 Perth Regional Aquifer Modelling System

The department has recently updated the Perth Regional Aquifer Modelling System (PRAMS) and we are using it to model the interactions between climate, land use, and groundwater abstraction. PRAMS was recently used to assess allocation limit options for the next water allocation plan for the Cockburn groundwater area.

6.3.2 Future climate tool

The department has developed a future climate tool that helps us better predict rainfall in our drying climate. The peer-reviewed tool was built using global climate models that perform well in Western Australia. It provides robust, up-to-date and defensible climate science for our decision making.

A report outlining how we developed the climate tool is available on the department's website – *Selection of future climate projections for Western Australia* (DoW 2015a). We used the future climate tool in PRAMS modelling to assess allocation limit options against water level criteria at Ministerial sites for the next water allocation plan for the Cockburn groundwater area.

6.3.3 Perth Regional Confined Aquifer Capacity project

The department completed the four-year Perth Regional Confined Aquifer Capacity (PRCAC) project in 2016. The project is investigating the best locations and depth for sustainable abstraction from the Leederville and Yarragadee aquifers and for groundwater replenishment (managed aquifer recharge). The \$7 million project will make sure that decisions about abstraction from the deep, mostly confined aquifers are based on robust, transparent science and collaboration with key stakeholders.

The project combines conventional hydrogeological investigations, innovative science from partnerships with leading research institutions, and ongoing collaboration with the Water Corporation. The project will help identify the best locations for abstraction and managed aquifer recharge to maximise abstraction from the deeper aquifers with acceptable impacts.

As part of this project a groundwater monitoring bore was constructed into the Leederville and Yarragadee aquifers in the vicinity of the Jandakot Mound at Woodman Point. This monitoring bore will improve our understanding of the confined aquifers in this area, serve as a long-term seawater intrusion monitoring bore, and ultimately improve our understanding and management of the groundwater system.

6.4 Consultation

The department regularly engages with the community through public seminars, conferences, workshops and community meetings, and presents annually to the Jandakot Community Consultative Committee (JCCC) as per our commitment in *Ministerial statement no. 688: Jandakot Mound groundwater resources*.

To minimise the impacts on groundwater-dependent ecosystems, the department provides advice to local and state government agencies on water supply, including water for public open space, and on development proposals as required.

Through the framework described in *Better urban water management* (WAPC 2008), we also provide advice to local governments and land development agencies on water management in urban areas to minimise the effects of drainage and stormwater on shallow groundwater in the Jandakot area. The *Better urban water management* framework sets out how water resources should be considered at each planning stage by identifying the various actions and investigations required to support decisions at each level of planning.

Appendices

Appendix A – Water level monitoring results for Ministerial sites on the Jandakot Mound for 2000–2016

Bold text refers to compliance with water level criteria and other criteria, with **black bold text** for compliant sites and **red bold text** for non-compliant sites.

Table A1 Wetland sites

Wetland	AWRC reference number	Water level criteria (mAHD)		Other criteria	Water level (mAHD)											Comments on compliance during the 2015–16 reporting period	
		Preferred	Absolute			2005–06	2006–07	2007–08	2008–09	2009–10	2010–11	2011–12	2012–13	2013–14	2014–15		2015–16
North Lake	Staff 424 6142521	13.29	12.68	<0.1 m decline per year	Max	13.79	13.18	13.07	13.22	12.93	12.68	12.93	12.71	13.01	13.11	12.79	<p><u>Compliance and trends:</u> Non-compliant with absolute minimum and other criteria. The lake has been non-compliant since 2006–07 and levels at the staff gauge declined by >0.1 m from 2014–15, despite the minimum groundwater level improving slightly. The lake has dried in recent years. <u>Management and mitigation:</u> A shallow groundwater investigation finalised in 2014–15 improved our understanding of the lake's hydrogeology in relation to its ecological health. In 2014–15, we updated the allocation limits in the Jandakot groundwater area based on a review that considered compliance, water level trends and ecological health at the lake. The lower allocation limits reduce the risk of future increases in abstraction impacting on lake levels. <u>Additional information:</u> The EPA did not support the Department of Water's recommendation (Strategen 2004) to revise the absolute minimum to 12.32 mAHD.</p>
	Min				12.97	12.38	12.38	12.38	12.38	12.38	12.27	12.30	12.30	12.30	12.00		
	Min				12.45	11.74	11.81	11.74	11.59	11.48	11.60	11.45	11.52	11.61	11.87		
Bibra Lake	Staff 6142520	13.6–14.2 <15.0 peak	13.6	Dry no more than 2 in 3 years, and preferably less than 1 in 3 years	Max	14.8	14.5	14.3	14.3	14.2	13.7	14.0	13.9	14.3	14.3	14.0	<p><u>Compliance and trends:</u> Non-compliant with absolute minimum and other criteria. The lake has been non-compliant and has dried every summer since 2006–07. <u>Management and mitigation:</u> In 2014–15, we updated the allocation limits in the Jandakot groundwater area based on a review that considered compliance, water level trends and ecological health at the lake. The revised allocation limits reduce the risk of future increases in abstraction impacting on lake levels. Bore BM7C is now operational and is being monitored monthly.</p>
	Min				14.1	13.5 dry 15/03	13.5 dry 19/03	13.5 dry 12/03	13.5 dry 19/02	13.5 dry 07/12	13.5 dry 01/02	13.5 dry 05/03	13.5 dry 01/04	13.5 dry 04/05	13.5 dry 01/03		
	Min														13.0		
Kogalup Lake (South)	Staff 6142522	13.1–14.0 <14.8 peak	13.1	N/A	Max					15.2	14.5	14.8	14.6	15.1	15.2	14.6	<p><u>Compliance:</u> Compliant with absolute minimum criterion. Groundwater levels in 2014–15 were the highest recorded since 2009–10. The bore dries at 13.61mAHD</p>
	Min								14.0	14.0	14.0	13.8	14.1	14.4	13.8		
	Max				15.2	14.6	14.5	14.9	14.5	14.5	14.8	14.6	15.1	15.2	14.6		
	Min				14.2	13.6	13.6	13.8	14.0	13.6	13.9	13.6	14.0	14.0	13.6		

Wetland	AWRC reference number	Water level criteria (mAHD)		Other criteria	Water level (mAHD)											Comments on compliance during the 2015–16 reporting period	
		Preferred	Absolute			2005–06	2006–07	2007–08	2008–09	2009–10	2010–11	2011–12	2012–13	2013–14	2014–15		2015–16
Thomsons Lake	Staff 609 6142517	11.3–11.8	10.8	For 30% of time water levels > 11.8 mAHD (wet year – 10 %) 11.3–11.8 mAHD (medium year – 80 %) 10.8–11.3 mAHD (dry year – 10 %)	Max	12.9	11.5	12.4	12.7	12.7	12.1	12.3	12.2	12.5	12.4	12.2	<u>Compliance and trends:</u> Compliant with absolute minimum criterion. Compliant with other criterion. 2015–16 was classed as a dry year with 602 mm of rainfall received at Perth Airport (BoM station no. 9021). Levels were above 10.8–11.3 mAHD set for dry years. We are seeking clarification from the OEPA to confirm whether the BoM station should be used for rainfall data. The lake dries at 11.5 mAHD. Absolute minimum water levels are measured at the bore. <u>Additional information:</u> As part of the Jandakot Drainage Scheme, the Water Corporation monitors water levels at this site. The Department of Parks and Wildlife implements a supplementation and sampling analysis plan that it developed in 2004–05.
	Min				11.5 dry	11.5 dry	11.5 dry	11.5 dry	11.5 dry	11.5 dry	11.5 dry	11.5 dry	11.5 dry	11.5 dry	11.5 dry		
	Max				12.4	11.3	12.0	12.2	12.2	11.8	12.1	11.8	12.1	12.1	12.1	11.8	
	Min				11.6	11.1	11.3	11.2	11.3	11.0	11.2	11.4	11.2	11.2	11.2	11.1	
Lake Forrestdale	Staff 6162557	21.2–21.6	21.1	Preferred earliest drying by April (wet year), February to March (medium year) or January (dry year) Lake levels must be at least 0.9 m deep (22.6 mAHD)	Max	22.4	21.7	21.9	22.1	22.0	21.7	21.9	21.7	22.0	21.9	21.8	<u>Compliance and trends:</u> Non-compliant with absolute summer minimum criterion. Non-compliant since 2010–11. Non-compliant with other criterion. The lake did not achieve a minimum depth of 0.9 m (22.6 mAHD) in 2015–16. <u>Management and mitigation:</u> In 2014–15, we updated the allocation limits in the Jandakot groundwater area based on a review that considered compliance, water level trends and ecological health at the lake. The revised allocation limits reduce the risk of future increases in abstraction impacting on lake levels. <u>Additional information:</u> The OEPA did not support a recommendation (Strategen 2004) to revise the absolute minimum to 20.2 mAHD.
	Min				dry 28/03	dry 25/10	dry 05/12	dry 13/01	dry 09/12	dry 07/12	dry 11/01	dry 04/02	dry 04/01	dry 13/01	dry 11/01		
	Max				23.3	22.9	23.2	23.2	23.2	23.0	23.2	22.9	23.2	23.1	23.0	23.0	
	Min				21.4	20.7	21.2	21.0	21.2	20.6	21.0	20.9	20.8	20.8	20.8	20.6	
Yangebup Lake	Staff 605 6142523	13.9–15.5 <16.5 peak	13.8	Either Bibra or Yangebup Lake must contain 0.3 m water, preferably 0.5 m	Max	16.7	16.1	16.0	16.6	16.6	15.9	15.9	15.9	17.1	16.9	16.4	<u>Compliance:</u> Compliant with absolute minimum and other criteria. <u>Additional information:</u> As part of the Jandakot Drainage Scheme, the Water Corporation monitors water levels at the site and lowers water levels if the peak is exceeded.
	Min				15.7	15.0	15.0	15.6	15.4	14.5	15.1	15.2	15.6	15.5	14.9		
	Max				16.1	15.6	15.9	15.9	16.1	15.3	15.3	15.3	16.2	16.2	15.8		
	Min				15.2	14.6	14.8	15.1	15.0	14.1	14.6	14.6	15.0	15.0	14.9		
Banganup Lake	Staff 5719 6142516	N/A	11.5	N/A	Max	12.8	12.7	12.7	12.7	12.7	12.7	12.7	12.7	12.7	12.7	12.7	<u>Compliance and trends:</u> Non-compliant with absolute summer minimum criterion 2014–15 was the first year groundwater levels at the lake have been compliant with the absolute minimum criteria since 2009–10. Levels returned to non-compliance in 2015–16. <u>Management and mitigation:</u> In 2014–15, we updated the allocation limits in the Jandakot groundwater area based on a review that considered compliance, water level trends and ecological health at the lake. The revised allocation limits reduce the risk of future increases in abstraction impacting on lake levels.
	Min				12.7	12.7	12.7	12.7	12.7	12.7	12.7	12.7	12.7	12.7	12.7		
	Max				12.7	12.4	12.6	12.6	12.5	12.0	12.3	12.1	12.4	12.2	12.3		
	Min				11.8	11.5	11.7	11.5	11.6	11.2	11.4	11.4	11.4	11.6	11.3		
Twin Bartram Swamp	Staff JE7C 6142544	22.8	22.5	No drying before end of January. Must be above preferred minimum 4 in every 6 years.	Max	24.4	23.8	23.8	24.4	24.4	23.7	23.8	24.3	24.7	24.6	24.3	<u>Compliance and trends:</u> Compliant with absolute minimum and other criteria. In 2014–15, the peak surface water level was the second highest on record and the minimum level was the highest recorded since 2009–10.
	Min				23.6	23.0 dry 12/01	23.0 dry 09/01	23.5	23.2	23.0 dry 04/01	23.1	23.2	23.4	23.5	23.3		
	Max				24.5	23.9	24.4	24.5	24.5	23.8	23.9	24.3	24.7	24.6	24.3		
	Min				23.6	23.0	23.1	23.5	23.4	22.7	23.1	23.3	23.4	23.6	23.3		

Wetland	AWRC reference number	Water level criteria (mAHD)		Other criteria	Water level (mAHD)											Comments on compliance during the 2015–16 reporting period	
		Preferred	Absolute			2005–06	2006–07	2007–08	2008–09	2009–10	2010–11	2011–12	2012–13	2013–14	2014–15		2015–16
Shirley Balla Swamp	Staff 6142576	N/A	23.1 mAHD or 0.5 m below lake base, whichever is higher 24.5	No drying before end of January. Must be above preferred minimum 4 in every 6 years. Water levels should not decline at rate greater than 0.1 m/year. Monitor staff gauge.	Max	25.6	25.1	25.0	25.0	25.0	25.1	25.1	25.0	25.2	25.5	25.3	<u>Compliance and trends:</u> Non-compliant with absolute minimum criterion. In 2014–15 levels fell back below this criterion after being compliant in the previous year. Non-compliant with other criterion. The swamp dries every year. <u>Management and mitigation:</u> In 2014–15, we updated the allocation limits in the Jandakot groundwater area based on a review that considered compliance, water level trends and ecological health at the lake. The revised allocation limits reduce the risk of future increases in abstraction impacting on lake levels. <u>Additional information:</u> The EPA endorsed the new absolute minimum water level criterion in 2004. However, no preferred minimum was established. Therefore the 4 in 6 year criteria cannot be applied. Further review of criteria is required.
	Min				dry 21/02	dry 27/09	dry	dry	dry	dry 01/09	dry 01/12	dry 05/11	dry 02/12	dry 02/02	dry 01/12		
	Max				25.7	24.9	25.0	25.4	25.3	24.6	24.6	25.1	25.3	25.6	25.4		
	Min				24.5	24.0	24.3	24.2	24.2	23.8	24.3	24.1	24.4	24.7	24.2		
Beenyup Road Swamp	Staff 6142547	24.0	23.6	Bore must be above preferred minimum 4 in every 6 years.	Max	25.2	24.6	24.7	25.1	25.1	24.7	25.1	25.1	25.3	25.3	24.9	<u>Compliance:</u> Compliant with absolute minimum and other criteria.
	Min				24.6	24.6 dry	24.6 dry	24.6 dry	24.6 dry	24.6 dry	24.6 dry	24.6 dry	24.6 dry	24.6 dry	24.6 dry		
	Max				25.2	24.5	24.9	25.1	25.2	24.7	25.2	25.1	25.4	25.3	24.9		
	Min				24.2	23.8	24.1	24.2	24.2	23.9	24.3	24.3	24.4	24.4	24.1		

Table A2 Rare or phreatophytic flora sites

Monitoring bore	AWRC reference number	Water level criteria (mAHD)		Other criteria	Water level (mAHD)											Comments on compliance during the 2015–16 reporting period	
		Preferred	Absolute			2005–06	2006–07	2007–08	2008–09	2009–10	2010–11	2011–12	2012–13	2013–14	2014–15		2015–16
Vegetation sites																	
JM14	61610247	24.39	23.89		Max	26.27	25.33	25.08	25.65	25.64	25.08	25.30	25.16	25.67	25.91	25.26	Compliance: Compliant with absolute minimum criterion.
					Min	24.91	24.05	24.39	24.63	24.64	23.82	24.59	24.34	24.61	24.78	24.35	
JM16	61610445	23.90	23.40		Max	25.95	25.02	25.19	25.51	25.50	24.95	25.27	24.94	25.53	25.56	25.13	Compliance: Compliant with absolute minimum criterion.
					Min	24.59	24.09	24.30	24.26	24.38	23.98	24.31	24.17	24.31	24.39	24.19	
JM19	61610177	25.26	24.76		Max	26.57	25.77	25.68	26.51	26.27	25.59	25.90	25.65	26.06	26.18	25.72	Compliance: Compliant with absolute minimum criterion.
					Min	25.33	24.41	24.90	25.16	25.26	24.29	25.12	24.86	24.90	25.26	24.84	
JM35	61610333	21.25	20.75		Max	26.24	25.43	25.64	25.95	25.82	24.33	25.68	25.44	25.76	26.06	25.02	Compliance: Compliant with absolute minimum criterion.
					Min	24.86	24.23	24.63	23.60	23.11	21.22	21.74	23.42	24.08	21.76	20.91	
JM39	61410142	21.20	20.70		Max	24.48	23.06	23.12	23.87	24.27	22.66	23.86	23.46	23.80	23.71	22.46	Compliance: Compliant with absolute minimum criterion.
					Min	22.06	21.30	21.56	21.56	21.62	21.16	21.86	21.88	21.52	21.37	20.76	
JM49	61410111	22.34	21.84		Max	24.04	23.71	23.76	23.80	23.81	23.49	23.86	23.73	23.89	23.98	23.67	Compliance: Compliant with absolute minimum criterion.
					Min	23.29	22.92	23.15	23.12	23.19	22.75	23.25	22.98	23.04	23.01	22.93	
8284	61610178	24.82	24.32		Max	26.30	25.60	25.80	25.80	25.70	25.35	25.62	25.38	25.79	25.99	25.68	Compliance: Compliant with absolute minimum criterion. Additional information: 8284 has recently been decommissioned as it collapsed while being airlifted. The department recommends using the recently installed 8284B (AWRC ref. 61611864) to measure water level criteria.
					Min	25.30	25.00	25.00	25.00	25.00	25.00	25.03	25.00	25.07	25.29	24.99	
JE4C	61610234	24.00	23.50		Max	26.06	25.19	25.18	25.85	25.70	24.83	25.63	23.85	25.81	25.95	25.45	Compliance: Compliant with absolute minimum criterion.
					Min	24.76	24.00	24.41	24.49	24.43	24.00	24.78	23.30	24.59	24.71	24.43	
JE10C	61410250	21.80	21.30		Max	26.32	25.21	25.39	25.79	25.98	24.86	25.28	25.06	25.72	25.98	26.04	Compliance: Compliant with absolute minimum criterion.
					Min	23.86	22.66	23.70	23.46	23.25	22.46	23.81	23.26	23.31	23.94	23.01	
Rare flora sites																	
JM7	61610180		22.06	< 0.1 m decline per year	Max	24.01	23.29	23.38	23.86	23.84	23.27	23.84	23.85	24.48	24.61	24.35	Compliance: Compliant with absolute minimum criterion.
					Min	23.06	22.52	22.82	22.90	22.97	22.30	23.13	23.06	23.59	23.77	23.56	
JM8	61610248		23.38	< 0.1 m decline per year	Max	25.51	24.63	24.57	25.00	25.12	24.49	24.88	24.66	25.29	25.58	25.29	Unavailable for 2014–15. Monitoring of water levels stopped in September 2014 due to access issues so we are unable to determine compliance with absolute summer minimum water level criteria.
					Min	24.34	23.77	24.02	24.09	24.19	23.67	24.15	23.96	24.42		24.42	
JM45	61610179		22.71	< 0.1 m decline per year	Max	24.70	23.88	23.57	24.12	24.12	23.62	23.91	23.85	24.45	24.76	24.39	Compliance: Compliant with absolute minimum criterion. Additional information: JM45 will soon be decommissioned due to development in the area. The department recommends using the recently installed JM45A (AWRC ref. 61618756) to measure water level criteria.
					Min	23.67	23.03	23.17	23.38	23.38	22.71	23.45	23.30	23.72	23.97	23.69	
JE17C	61419703		16.35	< 0.1 m decline per year	Max	18.19	18.01	18.12	18.15	18.13	18.06	18.05	18.06	18.16	18.27	18.13	Compliance: Compliant with absolute minimum criterion.
					Min	17.67	17.37	17.46	17.53	17.68	16.97	17.48	17.36	17.55	17.39	17.45	

Appendix B – Audit tables: Environmental conditions, procedures and commitments for the Jandakot Mound

Proponent: Department of Water

Period: 1 July 2015 to 30 June 2016

Blue text shows where the Department of Water seeks advice from the Department of Parks and Wildlife (DPAW) and/or the Office of the Environmental Protection Authority (OEPA) on 'clearing' conditions and/or proponent commitments.

Note: Ministerial statement no. 688 refers to the former Water and Rivers Commission's (now Department of Water's) responsibilities to the OEPA. In some cases, although referred to below as OEPA, some responsibilities now lie with DPAW.

Table B1 Ministerial conditions and procedures

Audit code	Subject	Action	How	Evidence	Requirement of:	On advice from	Phase	When/Where	Status for 2015–16
688: M 1-1	Implementation	The proponent shall implement the proposals as documented in <i>Section 46 Review of Environmental Conditions on Management of the Gnarara and Jandakot Mounds – Stage 1 Proposal for Changes to Conditions</i> (August 2004), as modified and documented in <i>Environmental Protection Authority Bulletin 1155</i> .	Implement proposals (conditions, procedures) given in EPA Bulletin 1155 and <i>Ministerial statement no. 688</i> .	Compliance report.	Minister for the Environment		Overall		Partly compliant. Compliant with most Ministerial conditions – refer to the status column of this table.
688: M 2-1	Proponent commitments	The proponent shall implement the environmental management commitments, as revised in December 2004, and documented in schedule 1 of <i>Ministerial statement 688</i> , to the requirements of the Minister for the Environment on advice of the Environmental Protection Authority (EPA).	Implement environmental management commitments given in EPA Bulletin 1155 and <i>Ministerial statement no. 688</i> .	Compliance report	Minister for the Environment	EPA	Overall		Partly compliant. Compliant with most proponent commitments – refer to the status column of this Appendix.
688: M 3-1	Proponent nomination & contact details	The proponent nominated by the Minister for the Environment under section 38 (6) or (7) of the <i>Environmental Protection Act 1986</i> is responsible for the implementation of the proposal, until such time as the Minister for the Environment has exercised the Minister's power under section 38 (7) of the Act to revoke the nomination of that proponent and nominate another person as the proponent for the proposal.	Adhere to conditions, procedures and commitments given in EPA Bulletin 1155 and <i>Ministerial statement no. 688</i> .	Letter notifying the Chief Executive Officer of the OEPA of any change in proponent details.	Minister for the Environment	EPA	Overall		N/A at this time.
688: M 3-2	Proponent nomination & contact details	If the proponent wishes to relinquish the nomination, the proponent shall apply for the transfer of proponent and provide a letter with a copy of this statement endorsed by the proposed replacement proponent that the proposal will be carried out in accordance with this statement. Contact details and appropriate documentation on the capability of the proposed replacement proponent to carry out the proposal shall also be provided.	Follow procedure given in 'action'.	Letter notifying the Chief Executive Officer of the OEPA of any change in proponent details.	Minister for the Environment		Overall		N/A at this time.
688: M 3-3	Proponent nomination & contact details	The nominated proponent shall notify the OEPA of any change of contact name and address within 60 days of such change.	Follow procedure given in 'action'.	Letter notifying the Chief Executive Officer of the OEPA of any change in proponent details.	CEO		Overall	60 days of change	N/A at this time.
688: M 4-1	Commencement and time limit of approval	The proponent shall provide evidence to the Minister for the Environment within five years of the date of this statement that the proposals have been substantially commenced or the approvals granted in the statements of 8 March 1988 and 17 February 1999 shall lapse and be void.	Provide evidence in annual/triennial reports.	Compliance report.			Overall	Condition complete	The Department of Water seeks advice on 'clearing' this condition. The 'status of implementation of the proposals' is 'completed' because Jandakot scheme stages 1 and 2 are fully commissioned.

Audit code	Subject	Action	How	Evidence	Requirement of:	On advice from	Phase	When/Where	Status for 2015–16
688: M 5-1 1	Compliance audit and performance review	The proponent shall prepare an audit program and submit compliance reports to the OEPA which address: 1. the status of implementation of the proposals	Detail in annual/triennial reports. Compliance report will include: 1. the status of implementation of the proposals	Compliance report.	CEO		Overall	Condition complete	The Department of Water seeks advice on ‘clearing’ this condition. An audit program (see 688: P 14) was submitted to the EPA on 25 November 2005. The ‘status of implementation of the proposals’ is ‘completed’ as Jandakot scheme stage 1 and 2 are fully commissioned.
688: M 5-1 2	Compliance audit and performance review	The proponent shall prepare an audit program and submit compliance reports to the OEPA which address: 2. evidence of compliance with the conditions and commitments	Detail in annual/triennial reports. Compliance report will include: 2. evidence of compliance with the conditions and commitments	Compliance report.	CEO			Annually	Compliant. Detailed in sections 6 and 7 of this report and status column of this Appendix.
688: M 5-1 3	Compliance audit and performance review	The proponent shall prepare an audit program and submit compliance reports to the OEPA which address: 3. the performance of the environmental management plans and programs. Note: Under delegation No. 54 issued on 18 June 2004 and section 48 (1) of the <i>Environmental Protection Act 1986</i> , the EPA is empowered to monitor the compliance of the proponent with the statement and should directly receive the compliance documentation, including environmental management plans, related to the conditions, procedures and commitments contained in this statement.	Detail in annual/triennial reports. Compliance report will include: 3. the performance of the environmental management plans and programs.	Compliance report.	CEO			Annually	Compliant. Detailed in sections 6 and 7 of this report and status column of this Appendix. Also refer to the results in Appendix A and Table 4 (Section 6).
688: M 5-2 1	Compliance audit and performance review	The proponent shall submit a performance review report by 1 December each year and more detailed reports by 1 February every three years, to the requirements of the EPA, which address: 1. compliance with the conditions	The performance review will address: 1. compliance with the conditions	Compliance report.	CEO		Overall	By 1 December each year and more detailed reports by 1 February every three years.	Compliant. Detailed in sections 6 and 7 of this report and status column of this Appendix. Also refer to the results in Appendix A and Table 4 (Section 6).
688: M 5-2 2	Compliance audit and performance review	The proponent shall submit a performance review report by 1 December each year and more detailed reports by 1 February every three years, to the requirements of the EPA, which address: 2. the achievement of environmental objectives set for the proposal	The performance review will address: 2. the achievement of environmental objectives set for the proposal	Compliance report.	CEO		Overall	By 1 December each year and more detailed reports by 1 February every three years.	Compliant. This report provides the required performance review and evidence of whether the environmental objectives (refer to Table 2 in the Appendix B for objectives) are being met.
688: M 5-2 3	Compliance audit and performance review	The proponent shall submit a performance review report by 1 December each year and more detailed reports by 1 February every three years, to the requirements of the EPA, which address: 3. stakeholder and community consultation about environmental performance and the outcomes of that consultation, including a report of any on-going concerns being expressed	The performance review will address: 3. stakeholder and community consultation about environmental performance and the outcomes of that consultation, including a report of any on-going concerns being expressed. Comply with commitments in Ministerial statement 688: P 7, 9, 10, 11, 16, and 17.	Compliance report.	CEO		Overall	By 1 December each year and more detailed reports by 1 February every three years.	Compliant. Detailed in this report. The Jandakot Community Consultative Committee (JCCC) met in October 2015 and discussed the environmental management of abstraction from the Jandakot groundwater system.

Audit code	Subject	Action	How	Evidence	Requirement of:	On advice from	Phase	When/Where	Status for 2015–16
688: M 5-2 4	Compliance audit and performance review	The proponent shall submit a performance review report by 1 December each year and more detailed reports by 1 February every three years, to the requirements of the EPA, which address: 4. proposed environmental management over the next three years to comply with conditions and environmental objectives set for the proposal.	The performance review will address: 4. proposed environmental management over the next three years to comply with conditions and environmental objectives set for the proposal.	Compliance report.	CEO		Overall	By 1 December each year and more detailed reports by 1 February every three years.	Compliant. The department is continuing to review and refine its environmental management of Jandakot groundwater resources using results from: <ul style="list-style-type: none"> environmental monitoring (see Section 6.1) hydrogeological investigations including the Perth shallow groundwater systems investigation and Perth Regional Confined Aquifer Capacity project (see Section 6.3). The department used outcomes from environmental monitoring and hydrogeological investigations to review allocation limits for the Jandakot groundwater area and also uses these in licence assessments.
688: M 5-3	Compliance audit and performance review	The proponent shall make the reports required by condition 5-2 publicly available, to the requirements of the EPA.	Available on Department of Water website: www.water.wa.gov.au	Reports made available on the Department of Water website: < www.water.wa.gov.au >	CEO		Overall	After OEPA acknowledgement letter being received. Department of Water website.	Compliant. The following Jandakot compliance reports can be found on the department's website www.water.wa.gov.au : <ul style="list-style-type: none"> 2006–07 annual (DoW 2007b) 2005–08 triennial (DoW 2008a) 2008–09 annual (DoW 2009b) 2009–10 annual (DoW 2010) 2008–11 triennial (DoW 2012a) 2011–12 annual (DoW 2012b) 2012–13 annual (DoW 2013) 2011–14 triennial (DoW 2014) 2014–15 annual (DoW 2015b)
688: M 5-4	Compliance audit and performance review	The proponent shall report any breach or anticipated breach of the environmental criteria set out in tables 1 and 2 (attached to <i>Ministerial statement 688</i>) or environmental objectives to the OEPA immediately it becomes evident to the proponent.	Report in regular summaries sent to the Chief Executive Officer of the OEPA.	Letter to the Chief Executive Officer of the OEPA reporting non-compliances with water level and other criteria as required. Compliance report.	CEO		Overall	Immediately as it becomes evident.	Compliant. The department informs the OEPA of non-compliance with criteria water levels and other criteria in annual and triennial compliance reports.
688: M 6-1	Management plan	The proponent shall implement the Environmental Management Plan prepared by the Water Authority of Western Australia (1992) to the requirements of the EPA.	Comply with environmental objectives and criteria listed in WAWA EMP (1992).	Compliance report	EPA		Overall		The Department of Water seeks advice on 'clearing' this condition. The condition to implement the requirements set out in the Environmental Management Plan is met by following and meeting the commitments in <i>Ministerial statement no. 688</i> . The Environmental Management Plan was submitted to the former Department of Environment and Conservation in 1992 and since then there have been a number of amendments to Ministerial conditions relating to the plan. The department considers the implementation of the Environmental Management Plan an ongoing commitment. From 2005 onwards the former Department of Environment, and now Department of Water, is demonstrating its implementation through the annual/triennial compliance reports to the OEPA. Implementation is reported as: <ul style="list-style-type: none"> compliance with water level and other criteria predictions of non-compliance with water level criteria reporting on proponent and Ministerial conditions/commitments (audit tables) implementation of the environmental monitoring program (required under other conditions).

Audit code	Subject	Action	How	Evidence	Requirement of:	On advice from	Phase	When/Where	Status for 2015–16
688: M 7-1	Groundwater allocations	The proponent shall inform the EPA immediately of any proposed changes to allocations, abstraction limits and licence or allocation periods.	Detail limits on availability on the Department of Water website. www.water.wa.gov.au Detailed in annual/triennial reports.	Reports made available on the Department of Water website: www.water.wa.gov.au	Minister for the Environment		Overall		Compliant. Changes to allocations, abstraction limits and licensing is documented in annual and triennial compliance reports. There has been limited change (mostly reductions in abstraction) over the last five years. The department's recent management focus has been an allocation limit review for the Jandakot groundwater area (see Section 6.2.1). The OEPA will be consulted regarding changes that have resulted from the review.
688: M 8-1	Water conservation	The proponent shall actively encourage further reduction in public and private water demand in accordance with the State Water Strategy (2003) and other water conservation initiatives.	Engage in activity that supports water conservation.	Compliance reports	Minister for the Environment		Overall		Compliant. Section 6 outlines the management actions the department is taking to encourage further reduction in public and private water demand. Following extensive consultation with the irrigation industry as well as local government, the Department of Water developed and implements <i>Operational policy no. 1.2 – Policy on water conservation/efficiency plans</i> (DoW 2009c). The department's Water Recycling and Efficiency staff undertake projects to reduce water demand and achieve water conservation initiatives (see Section 6.2.3). This includes implementing the above policy and the permanent winter sprinkler ban.
688: M Procedure 1		Where a condition states 'to the requirements of the Minister for the Environment on advice of the Environmental Protection Authority', the EPA will prepare the written notice to the proponent.	The EPA to provide written notice to the proponent (Department of Water).		Minister for the Environment		Overall		No action required by the Department of Water.
688: M Procedure 2		The EPA may seek advice from other agencies or organisations, as required, in order to provide its advice.	The EPA to seek advice as required.		EPA	Other agencies as required	Overall		No action required by the Department of Water.
688: M Procedure 3		Where a condition lists advisory bodies, it is expected that the proponent will obtain the advice of those listed as part of its compliance reporting to the EPA.	Department of Water liaises with advisory body as required.	Liaison with advisory body in compliance report	EPA	Agencies listed as part of compliance reporting	Overall		Compliant.

Table B2 The proponent's (Department of Water's) environmental management conditions

Audit code	Subject	Objective	Action	How	Evidence	Requirement of	On advice from	When/Where	Status
688: P 1	Groundwater-dependent ecosystems	To protect significant environmental values.	Ensure that groundwater abstraction satisfies the environmental criteria presented in tables 1 and 2 (<i>Ministerial statement no. 688</i>).	Meet objectives and Environmental Water Provisions criteria presented in Tables 1 and 2 (<i>Ministerial statement no. 688</i>).	Compliance report.	Minister for the Environment		Overall	Partly compliant. Detailed in section 6 and in Appendix A of this report.
688: P 2 1	Environmental management and monitoring	To minimise environmental and/or significant impact.	In the event that monitoring indicates that there will be significant impacts of a nature not predicted or indicates that a breach of the specified criteria has occurred or is likely to occur, then one or more of the following actions will be undertaken: 1. demonstrate to the satisfaction of the EPA that the breach of criteria is not a result of groundwater abstraction; or	Review of monitoring results, advice from expert hydrogeologists, groundwater modelling.	Compliance report. See Condition 688: M 5-4	EPA		Overall	Compliant. The department annually predicts whether sites are likely to be non-compliant with water level criteria during the coming summer and reviews public water supply abstraction to limit impacts at potentially non-compliant sites.
688: P 2 2	Environmental management and monitoring	To minimise environmental and/or significant impact.	2. satisfy the EPA that the breach of a criterion is transient and not of permanent significance; or	Review of similar occurrence in the past and consequences from environmental monitoring results Advice from expert hydrogeologists.	Compliance report	EPA		Overall	Partly compliant. Water levels at a number of Ministerial sites (including North Lake and Bibra Lake) are consistently non-compliant with water level and other criteria. The department considered non-compliance and ecological condition at these sites in its review of allocation limits for the Jandakot and Cockburn groundwater areas. The department also considers non-compliance at these sites in distributing public supply abstraction and in licensing decisions for private use.
688: P 2 3	Environmental management and monitoring	To minimise environmental and/or significant impact.	3. take the following actions: a. modify pumping from any bore where such changes can have a measurable effect (say raise water levels 1 centimetre or more), except in extenuating circumstances such as where significant economic hardship would occur, or CALM declare that the low water levels would be beneficial b. in the case of a wetland, artificially maintain the 'action minima' water level c. implement a short-term detailed monitoring program to establish the condition of agreed species in the affected area.	Implement actions as outlined.	Compliance report	EPA		Overall	Compliant. No new actions were required in the reporting period. As described in previous compliance reports, the department restricts Water Corporation abstraction from bores that impact on Ministerial sites and other groundwater-dependent ecosystems.
688: P 3	Water allocation	To minimise environmental and/or significant impact and manage the resource sustainability.	Regularly review the bulk allocations for private abstraction, as part of the total water abstraction allocation for the Jandakot PWSA, with regard to the sustainable yield of the superficial aquifer, including consideration of the environmental impacts of that abstraction.	Make part of Department of Water, water allocation planning program.	Compliance report	EPA		Overall	Compliant. The department's recent management focus was refining the allocation limits in the Jandakot and Cockburn groundwater areas (see Section 6.2.2 and 6.2.3). This work considered licensed entitlements for both private and public abstraction.

Audit code	Subject	Objective	Action	How	Evidence	Requirement of	On advice from	When/ Where	Status
688: P 4	Water allocation	To minimise environmental and/or significant impact and manage the groundwater resource sustainability.	Restrict the issuing of licences for private abstraction to the limits set by the bulk allocations for both the Jandakot PWSA in its entirety and the licensing subareas.	Set sub-area groundwater allocation limits to values equal to or less than those set for the Jandakot PWSA.	Compliance report	EPA			Compliant. The department's recent management focus was refining the allocation limits in the Jandakot and Cockburn groundwater areas (see Section 6.2.2 and 6.2.3).
688: P 5	Water allocation	Provide up-to-date mechanisms for groundwater allocation.	Investigate and implement efficient mechanisms for groundwater allocation.	Incorporate in regular Department of Water allocation work program.	Compliance report	EPA			Compliant. The department's recent management focus was refining the allocation limits in the Jandakot and Cockburn groundwater areas (see Section 6.2.2 and 6.2.3). This work used contemporary methods for determining sustainable limits for use in the decision-making process for the new allocation limits.
688: P 6	Groundwater protection	To minimise environmental and/or significant impact and manage the groundwater resource sustainability.	Assist the EPA in the development of environmental protection policies to protect groundwater.	Liaise with the EPA as required	Compliance report	EPA			N/A at this time.
688: P 7	Groundwater protection	Integrated land and water resource planning to minimise environmental and/or significant impact.	Participate in the review of regional plans proposed by the Department for Planning and Infrastructure, local government town planning schemes, and rezoning and development applications.	Liaise with local government, the Department for Planning and Infrastructure, and other relevant land-use planning agencies.	Compliance report	EPA			Compliant. The department assesses land use proposals with potential water resource issues referred from local and state government agencies. In partnership with the Department of Planning (and other agencies), the department helped develop <i>Better urban water management</i> (WAPC 2008), a framework for land use planning assessments. The department also produced the <i>Jandakot drainage and water management plan</i> (DoW 2009d), which aims to assist land developers and local government to better manage groundwater quantity and quality in the area. The department recently provided advice on the <i>Southern Metropolitan and Peel sub-regional structure plan – Regional water management strategy</i> , which identifies water related constraints and opportunities associated with proposed urban and industrial areas. The department is working with other state agencies to provide advice into the Strategic Assessment of the Perth and Peel regions.
688: P 8	Groundwater protection	Integrated land and water resource planning to minimise environmental and/or significant impact.	Participate in the review of development submissions to the EPA.	Provide advice to the EPA as requested.	Compliance report. See 688: P 7	EPA			Compliant. See the status of 688: P 7.
688: P 9	Groundwater protection	Integrated land and water resource planning to minimise environmental and/or significant impact.	Work with the Department for Planning and Infrastructure to prepare an integrated Land Use and Water Management Strategy for the Jandakot Mound.	Liaise with the Department of Planning and Infrastructure to prepare an integrated Land Use and Water Management Strategy for the Jandakot Mound.	Compliance report	EPA			Compliant. The department produced the <i>Jandakot drainage and water management plan</i> (DoW 2009d), which aims to assist land developers and local government to better manage groundwater quantity and quality in the area. With the Department of Planning (and other agencies) the department has produced the <i>Better urban water management</i> publication (WAPC 2008). The department recently provided advice on the <i>Southern Metropolitan and Peel sub-regional structure plan – Regional water management strategy</i> , which identifies water related constraints and opportunities associated with proposed urban and industrial areas. The department is working with other state agencies to provide advice into the Strategic Assessment of the Perth and Peel regions.

Audit code	Subject	Objective	Action	How	Evidence	Requirement of	On advice from	When/ Where	Status
688: P 10	Water conservation	Water conservation.	Actively pursue programs in both supply and demand management. This includes ongoing public information programs and, where appropriate, regulation for design changes and regular reviews of pricing to conserve water. Improvements in the Water Corporation's supply system will also be pursued.	Engage in activity that supports water conservation. Development of a policy on water conservation plans.	Compliance report	EPA			Compliant. Section 6.2 outlines the actions the department is taking to manage supply and demand and support water conservation.
688: P 11	Groundwater protection	Integrated land and water resource management to minimise environmental and/or significant impact.	Actively participate in integrated management of the Jandakot catchment.	Liaise with other water and land-use agencies.	Compliance report	EPA			Compliant. The department liaises with other water and land-use agencies to integrate management of the Jandakot catchment, including the Water Corporation, OEPA and the Western Australian Planning Commission. For example, the department prepared the <i>Jandakot drainage and water management plan</i> for the WAPC Jandakot structure plan area (see 688: P 9) with some modelling assistance from the Water Corporation.
688: P 12	Environmental management and monitoring	Environmental management of groundwater abstraction is based on best available scientific knowledge.	Review and revise the management criteria and strategies, with the agreement of the EPA, as knowledge of the Jandakot environment and its interaction with groundwater improves.	Stage 1 and 2 Section 46 review supported by scientific research results.	Compliance report	EPA	EPA		Compliant. <i>Stage I Section 46</i> (DoE 2005) is complete and a number of changes were supported by the OEPA (refer Bulletin 1155). Stage II Section 46 work has concentrated on the Gnangara Mound area due to priorities (refer 2007–08 Gnangara compliance report, December 2008). The department's recent management focus was refining the allocation limits in the Jandakot and Cockburn groundwater areas (see Section 6.2.2 and 6.2.3).
688: P 13	Environmental management and monitoring	Monitor compliance with Ministerial water level criteria. Management of groundwater levels to protect environmental values of select wetlands.	Monitor water levels in groundwater monitoring bores and North, Bibra, Yangebup, Kogalup, Thomsons and Forrestdale lakes, and The Spectacles and Twin Bartram Swamp, as well as some other small wetlands.	Include in Department of Water regional groundwater monitoring program.	Compliance report. Hydrographs available on the Department of Water website: <www.water.wa.gov.au> See 688: P 14	EPA			Compliant. Detailed in this report, refer to the results given in Appendix A. Wetlands were included in the department's Jandakot Environmental Monitoring Program referred to the EPA in December 2005 (see 688: P 14). Hydrographs of Ministerial wetland and terrestrial vegetation sites are available on the department's website.
688: P 14 1	Environmental management and monitoring	Provide a means for the assessment of compliance with Ministerial environmental criteria for the Jandakot Mound.	1. Prepare an environmental monitoring program for submission to the EPA for review and subsequent finalisation of the program to the satisfaction of the EPA. The monitoring program will include: <ul style="list-style-type: none"> monitoring of groundwater levels in all relevant aquifer systems relevant wetland water levels and water quality condition of vegetation and fauna associated with groundwater-dependent ecosystems. 	Prepare an environmental monitoring program.	Submit monitoring program to the EPA for approval. Compliance report.	EPA	DEC	Within four months of a revised statement being issued following the 2004 Stage 1 section 46 review	Compliant. The department's monitoring program includes: <ul style="list-style-type: none"> monitoring of groundwater levels in all relevant aquifer systems relevant wetland water levels and water quality condition of vegetation and fauna associated with groundwater-dependent ecosystems. The previous environmental monitoring program was submitted to the EPA on 21 December 2005. It was detailed in Appendix 7 of the Gnangara triennial report for 2003–06 (DoW 2007c). The EPA's audit of the 2006–07 compliance report agreed that the commitment could be 'cleared' upon confirmation from the DEC. The department reviewed the environmental monitoring program in June 2009 with the ecologists that do the monitoring (see Appendix D). A number of amendments were made. A letter was sent to the Director General of the DEC in December 2009, seeking advice and input on the amendments. The department may request further revisions after considering recommendations from the Perth shallow groundwater systems investigations and the eco-hydrological states investigation (see Section 6.3).

Audit code	Subject	Objective	Action	How	Evidence	Requirement of	On advice from	When/Where	Status
688: P 14 2	Environmental management and monitoring	To enable assessment of compliance with Ministerial environmental criteria for the Jandakot Mound.	2. Implement the approved environmental monitoring plan	Make part of annual departmental work program	Compliance report	EPA	DEC		Compliant. A summary of the results of the environmental monitoring over the reporting period (2014–15) is reported in Section 6.1. The department used these results to distribute public supply abstraction to limit environmental impacts and inform licensing decisions for private use. The department has also considered the results in its review of allocation limits in the Jandakot and Cockburn groundwater areas.
688: P 14 3	Environmental management and monitoring	Monitoring program is a reflection of the best available knowledge of groundwater/environment interaction.	3. Review and revise the program every six years (coinciding with triennial reports), to the satisfaction of the EPA.	Incorporate review in triennial reporting in 6 year intervals.	Triennial compliance report	EPA	DEC	Every six years (coincides with triennial report)	Compliant. The department reviewed the environmental monitoring program in June 2009 with the ecologists that do the monitoring (see Appendix D). A number of amendments were made. A letter was sent to the Director General of the DEC in December 2009, seeking advice and input on the amendments. The department may request further revisions after considering recommendations from the Perth shallow groundwater systems investigations and the eco-hydrological states investigation (see Section 6.3).
688: P 15	Environmental management and monitoring	Monitor habitat shifts in conjunction with the assessment of potential impacts on environmental values from groundwater abstraction on the Jandakot Mound.	Use aerial photographs or equivalent on a triennial basis to detect habitat shifts in North Lake, Yangebup, Kogalup, Thomsons and Forrestdale lakes.	Aerial photographs not an effective method. Instead the department focuses on field surveys of vegetation transects.	Triennial compliance report	EPA		Every three years (coincides with triennial report)	Partly-compliant. There may be limited value using aerial photos solely as a diagnostic tool. This was recognised and the commitment was modified in Bulletin 1155. The department does monitoring at established transects annually at each of these wetland sites. This monitoring identifies shifts in habitat. The department commissioned Edith Cowan University to develop a model for determining ecological risk to groundwater-dependent vegetation in a drying climate. The model is based on 30 years of ecological and hydrological monitoring data. It will be an important management tool for assessing risk to groundwater-dependent vegetation (including likely habitat shifts) under different climate and abstraction regimes.
688: P 16	Community consultation	Inform major stakeholders of Department of Water and Water Corporation activities on the Jandakot Mound. Provide mechanism for feedback.	Hold meetings at least annually with the Jandakot Community Consultative Committee (JCCC) established in consultation with the EPA. This committee will be informed on the groundwater scheme's operation and will provide feedback to the proponent.	Department of Water to organise JCCC meetings.	Compliance report	EPA			Compliant. The Jandakot Community Consultative Committee met in August 2014 and discussed environmental management of abstraction from the Jandakot groundwater system. A wide range of major stakeholders were represented at the meeting.
688: P 17	Community information	Maintain good public image and up-to-date knowledge of community concerns of water resource issues.	Continue to monitor community response to relevant water resource issues as reported by the media and maintain the current practice of public accessibility of WRC staff. Upon request and adequate notice, staff will address community groups on issues associated with groundwater management.	Monitor media for relevant issues. Address community groups as requested.	Compliance report	EPA			Compliant. The department subscribes to the 'Media Watch' service, which forwards water related newspaper articles to department employees so they are kept informed. The department's staff are involved in conferences, meetings and workshops that include community group representation (for example JCCC meetings).

Audit code	Subject	Objective	Action	How	Evidence	Requirement of	On advice from	When/Where	Status
688: P 18	Environmental management and monitoring	Improved environmental monitoring facility at this significant wetland.	Install monitoring wells and improved wetland water level monitoring facilities for Forrestdale Lake, and evaluate monitoring data to determine groundwater/wetland water level relationship. Subject to CALM/WRC installing permanent vegetation monitoring transect and undertaking flora and fauna studies to establish environmental values, the proponent will review available information to propose revised management criteria, if appropriate.	Being addressed as part of the Department of Water project 'Perth shallow groundwater systems investigation'.	Compliance report	EPA			Compliant. The department installed groundwater monitoring bores at Lake Forrestdale (Bourke 2008) and North Lake (Searle 2009) as part of the Perth shallow groundwater systems investigation. The Spectacles and Thomsons Lake were also included (Searle 2009) with sampling done at existing bores (see Section 6.3). The department is evaluating monitoring data at these wetlands to determine the groundwater–wetland water level relationship.
688: P 19	Environmental management and monitoring	Enable good water resource management including environmental protection on the Jandakot Mound.	<ol style="list-style-type: none"> 1. Prepare a Management and Monitoring Program. 2. Implement the Management and Monitoring Program. 	Prepare Management and Monitoring Program and submit to EPA.		EPA		Completed	Completed. The Department of Water seeks advice on 'clearing' this condition. This commitment was required prior to commissioning the Stage 2 scheme. Stage 2 was in operation for over 10 years and the implementation of the management and monitoring program is described in numerous annual and triennial compliance reports. In addition, following publication of <i>Ministerial statement no. 688</i> , a revised monitoring program was developed and submitted to EPA (refer Commitment 688: P 14) in December 2005.
688: P 20		Improve understanding of groundwater/wetland ecology relationships	Continue to fund the research projects 10.6.3 listed in Appendix 2 of the EPA Bulletin 587 for the duration of the studies.	Include research projects in annual business planning.		EPA		Completed	Completed. The Department of Water seeks advice on 'clearing' this condition. Auditor's comments in the 2003–04 annual report state that the commitment can be 'cleared'. Research projects given in Appendix C (Table A12.2) of EPA <i>Bulletin 587</i> refer to commitments given in numbers 21, 22, and 23 below.
688: P 21		Improve understanding of aquatic fauna of the select Jandakot wetlands.	Develop a fauna monitoring program which will focus on: <ol style="list-style-type: none"> 1. waterbird species diversity and breeding success 2. the number of families of aquatic invertebrate and, at infrequent intervals, species richness. 	Develop a fauna monitoring program.		EPA	CALM	Completed	Completed. The Department of Water seeks advice on 'clearing' this condition. Auditor's comments in the 2003–04 annual report agreed such a program had been developed and implemented prior to commissioning the Stage 2 scheme and that the commitment can be 'cleared'. A fauna monitoring program was developed and implemented. The results are presented in numerous annual and triennial reports to date.
688: P 22		Improve understanding of the environmental significance of this wetland and means of protecting values.	Undertake study of Banganup Lake, in conjunction with CALM and The University of WA to establish management criteria and consider effectiveness of artificial maintenance of water levels.	Undertake a study of Banganup Lake as described.		EPA	CALM	Completed	Completed. The Department of Water seeks advice on 'clearing' this condition. The study was completed and Auditor comments in 2003–04 annual report states that Commitment can be 'cleared'.
688: P 23		Improve understanding of the environmental significance of this wetland and means of protecting values.	Undertake a study of Twin Bartram Swamp to consider the feasibility and effectiveness of artificial maintenance of water levels.	Undertake a study of Twin Bartram Swamp as described.		EPA	CALM	Completed	Completed. The Department of Water seeks advice on 'clearing' this condition. The study was completed and Auditor's comments in 2003–04 annual report state that the commitment can be 'cleared'.

Appendix C – History of Ministerial statements for the Jandakot Mound

In 1988, the former Water Authority of Western Australia (WAWA) referred plans for the construction of Stage 2 of the Jandakot groundwater scheme to the Environmental Protection Agency (EPA). The EPA completed a Public Environmental Review (PER) level of assessment of the proposal. In 1992, the Minister for the Environment issued a statement (EPA Bulletin 587, *Ministerial statement no. 253 – Assessment 196*), advising that the proposal could be implemented subject to conditions and commitments imposed on the WAWA. Most of the conditions and commitments related to ensuring that groundwater and surface water levels across the Jandakot Mound are maintained at acceptable levels.

A key element of *Ministerial statement no. 253* was that it confirmed environmental water provisions to maintain environmental values on the Jandakot Mound. These were set in the form of water level criteria to be achieved in key wetlands and other groundwater-dependent ecosystems, such as areas of phreatophytic vegetation.

In 2001, as a consequence of changes in land use and lower rainfall, the EPA endorsed a two-stage approach to review the Ministerial conditions and commitments for the Gnamptara and Jandakot mounds under section 46 of the *Environmental Protection Act 1986*. The first stage of the section 46 review was for the department (then the Department of Environment) to review Ministerial conditions and commitments on Gnamptara and Jandakot based on existing knowledge (Department of Environment 2005). This review led to *Ministerial statement no. 687* for Gnamptara (Government of Western Australia 2005b) and *Ministerial statement no. 688* for Jandakot (Government of Western Australia 2005a).

The department further reviewed Ministerial conditions and commitments on Gnamptara in 2007 (DoW 2008b). The purpose of this review was to refine Ministerial criteria sites to those with significant ecological value and those where abstraction is the main factor influencing groundwater levels. This review led to the *EPA Bulletin 1324* in May 2009, which recommended changes to the Minister for Environment. *Ministerial statement no. 819* for Gnamptara (Government of Western Australia 2009) was released later that year including the consolidated and refined conditions and commitments.

The second stage of the section 46 review was proposed as a more comprehensive review to improve how we manage public and private abstraction and to incorporate ecological information using the results of work underway at the time. This stage was later improved by more recent investigations into the shallow groundwater systems and ecological responses to climate.

For Gnamptara, the intent of the second stage review will be covered by the next phase of planning for Gnamptara groundwater resources. For Jandakot, we will use the analysis of recent work to focus our management efforts in the areas that will most benefit from changes to abstraction.

Appendix D – Review of the environmental monitoring program (688: P 14 1)

In mid 2009, the department started a series of workshops to review the current environmental monitoring with the ecologists contracted to do the work. The workshops aimed to improve both the effectiveness and efficiency of the environmental monitoring program.

Our initial review of the environmental monitoring program:

- refocused the program on the relationships between groundwater levels, ecological condition, and abstraction
- improved efficiency by reducing the monitoring frequency from annually to every three years, unless annual monitoring is warranted on a management or information-needs basis
- improved the presentation and communication of monitoring data.

In a second review workshop, held in late April 2010, we considered two key issues:

- how monitoring results could be presented spatially so that it represents short-term and long-term trends across an entire groundwater management area
- how modelling results could be used to ensure the monitoring effort is focussed on the correct areas in the long-term.

There were three main outcomes and recommendations from this second workshop:

- Future monitoring programs should include sites where ecological health and compliance can be improved through managing abstraction (based on modelling).
- The department can make a difference to important areas on the Jandakot Mound by managing abstraction – even minor benefits to groundwater levels can be significant for certain groundwater-dependent ecosystems.
- Where possible, abstraction should be reduced in areas where it would benefit wetlands that still retain some of their key environmental values.

Another review workshop was held in 2013 to further refine the frequency of the monitoring program.

Appendix E – Map information and disclaimer

Datum and projection information

Vertical datum: Australian Height Datum (AHD)

Horizontal datum: Geocentric Datum of Australia 94

Projection: MGA 94 Zone 50

Spheroid: Australian National Spheroid

Project information

Client: R. Rowling

Map Author: S. Edgar

Task ID: 0012

Filepath: J:\gisprojects\Project\C_series\C2207\0004\141118

Filename: C2207

Compilation date: November 2014

Disclaimer

This map is a product of the Department of Water and was printed on November 2014.

While the Department of Water has made all reasonable efforts to ensure the accuracy of this data, the department accepts no responsibility for any inaccuracies and persons relying on this data do so at their own risk.

Sources

The Department of Water acknowledges the following datasets and their custodians in the production of this map:

Western Australia Towns – DLI – 12/07/2001

Hydrography, Linear (Hierarchy) – DoW – 05/11/2007

RIWI Act, Groundwater areas – DoW – 06/03/2008

Groundwater Subareas – DoW – 11/03/2009

WIN Groundwater Sites, Water Corporation – DoW – 10/2009

WIN Sites – Ministerial Criteria Sites (2005) – DoW – 10/2009

References

- Bates BC, Chandler RE, Charles SP & Campbell EP 2010, 'Assessment of apparent nonstationarity in time series of annual inflow, daily precipitation, and atmospheric circulation indices: A case study from southwest Western Australia', *Water Resources Research*, vol. 46, W00H02, doi:10.1029/2010WR009509.
- Bourke SA 2008, *Bore completion report for Perth shallow groundwater systems: investigation – stage 1*, Hydrogeology Report no. HR 266, Department of Water, Government of Western Australia, Perth.
- Buller G, Hamilton S & Froend R 2016, *Wetland Vegetation Monitoring 2015 Survey of Jandakot Wetlands*, Prepared for the Department of Water, May 2016
- Department of Environment (DoE) 2005, *Section 46 review of environmental conditions on management of the Gnangara and Jandakot Mounds: Section 46 progress report – State of the Gnangara Mound*, Department of Environment, Government of Western Australia, Perth.
- Department of Water (DoW) 2007a, *Cockburn groundwater area water management plan*, Water resource allocation and planning series report no. WRAP 18, Department of Water, Government of Western Australia, Perth.
- 2007b, *Environmental management of groundwater allocation from Gnangara groundwater mound – triennial compliance report to the Environmental Protection Authority, July 2003–June 2006*, Department of Water, Government of Western Australia, Perth.
- 2007c, *Environmental management of groundwater allocation from Jandakot groundwater mound – annual compliance report to the Environmental Protection Authority, July 2006–June 2007*, Department of Water, Government of Western Australia, Perth.
- 2008a, *Environmental management of groundwater allocation from Jandakot groundwater mound – triennial compliance report to the Environmental Protection Authority, July 2005–June 2008*, Department of Water, Government of Western Australia, Perth.
- 2008b, *Review of Ministerial conditions on the groundwater resources of the Gnangara Mound*, Department of Water, Government of Western Australia, Perth.
- 2009a, *Gnangara groundwater areas allocation plan*, Department of Water, Government of Western Australia, Perth.
- 2009b, *Environmental management of groundwater allocation from Jandakot groundwater mound – annual compliance report to the Environmental Protection Authority, July 2008–June 2009*, Department of Water, Government of Western Australia, Perth.

-
- 2009c, *Operational policy no. 1.2 – Policy on water conservation and efficiency plans: Achieving water use efficiency gains through water licensing*, Department of Water, Government of Western Australia, Perth.
 - 2009d, *Jandakot drainage and water management plan*, Department of Water, Government of Western Australia, Perth.
 - 2010, *Environmental management of groundwater allocation from the Gnangara and Jandakot Mound – annual compliance report to the Office of Environmental Protection Authority, July 2009–June 2010*, Department of Water, Government of Western Australia, Perth.
 - 2012a, *Environmental management of groundwater allocation from the Gnangara and Jandakot Mound – annual compliance report to the Office of Environmental Protection Authority, July 2008–June 2011*, Department of Water, Government of Western Australia, Perth.
 - 2012b, *Environmental management of groundwater allocation from the Gnangara and Jandakot Mounds – annual compliance report to the Office of Environmental Protection Authority, July 2011–June 2012*, Department of Water, Government of Western Australia, Perth.
 - 2013, *Environmental management of groundwater allocation from the Jandakot Mound – annual compliance report to the Office of Environmental Protection Authority, June 2012–June 2013*, Department of Water, Government of Western Australia, Perth.
 - 2014, *Environmental management of groundwater allocation from the Jandakot Mound – triennial compliance report to the Office of Environmental Protection Authority, June 2011–June 2014*, Department of Water, Government of Western Australia, Perth.
 - 2015a, *Selection of future climate projections for Western Australia*, Water Science Technical Series, report no. 72, Department of Water, Western Australia.
 - 2015b, *Environmental management of groundwater allocation from the Jandakot Mound – annual compliance report to the Office of Environmental Protection Authority, June 2014–June 2015*, Department of Water, Government of Western Australia, Perth.
 - 2016, *Western Trade Coast Heavy Industry Water Supply Strategy*, Department of Water, Government of Western Australia, Perth.
- Government of Western Australia 2005a, *Ministerial statement no. 688: Jandakot Mound groundwater resources*, Government of Western Australia, Perth.
- 2005b, *Ministerial statement no. 687: Gnangara Mound groundwater resources*, Government of Western Australia, Perth.
- Government of Western Australia 2009, *Ministerial statement no. 819: Gnangara Mound groundwater resources*, Government of Western Australia, Perth.

Harms D & Curran M, *Jandakot wetland monitoring: Annual report 2016*. Prepared for Department of Water, Report Number 261, Bennelongia Pty Ltd Jolimont, Western Australia.

Searle JA 2009, *Bore completion report for Perth shallow groundwater systems: investigation – stage 2*, Hydrogeology Report no. HR 276, Department of Water, Government of Western Australia, Perth.

Strategen 2004, *Section 46 review of environmental conditions on management of the Gnangara and Jandakot Mounds: Stage 1 proposal for changes to conditions*, report prepared for the Department of Environment, Government of Western Australia, Perth.

Western Australian Planning Commission (WAPC) 2008, *Better urban water management*, Government of Western Australia, Perth.