



## Gingin groundwater allocation plan newsletter 3

This is the department's third newsletter to support the update of the *2002 Interim Gingin groundwater allocation plan*. I hope that the newsletters are useful in keeping you informed.

This edition includes:

- a summary of public information sessions held in July
- plan for public comment expected in November 2011
- a review of the Gingin groundwater trends monitoring data
- local licensing contacts in the Swan Avon regional office.

Community information sessions on the upcoming *Gingin groundwater allocation plan for public comment* were held on 11, 12 and 13 July 2011 in Gingin, Dandaragan and Wanneroo. Department staff were available to discuss the upcoming plan, proposed changes to allocation limits and individual license queries.

If you missed the sessions but would like to discuss the upcoming plan, contact the Water Allocation Planning Branch on 6364 6698.

We expect the *Gingin groundwater allocation plan for public comment* to be released in November 2011. Its release will be advertised in the Gingin Advocate and the Midwest Times and the department's [website](#). To receive a copy of the plan on its release in November, please register at [allocation.planning@water.wa.gov.au](mailto:allocation.planning@water.wa.gov.au). Once the plan is released, the public comment period will be open for 90 days. To assist you with your submission, a guide to making a submission will be available on the [website](#).

We look forward to receiving your feedback.

**Don Cummins**  
Regional Manager

# Gingin aquifer trend review 2010

In 2010, the department commissioned the *Gingin aquifer trend review* to inform the allocation limit review process. The independent review undertaken by MWH pulled together the department's and licensees' monitoring data.

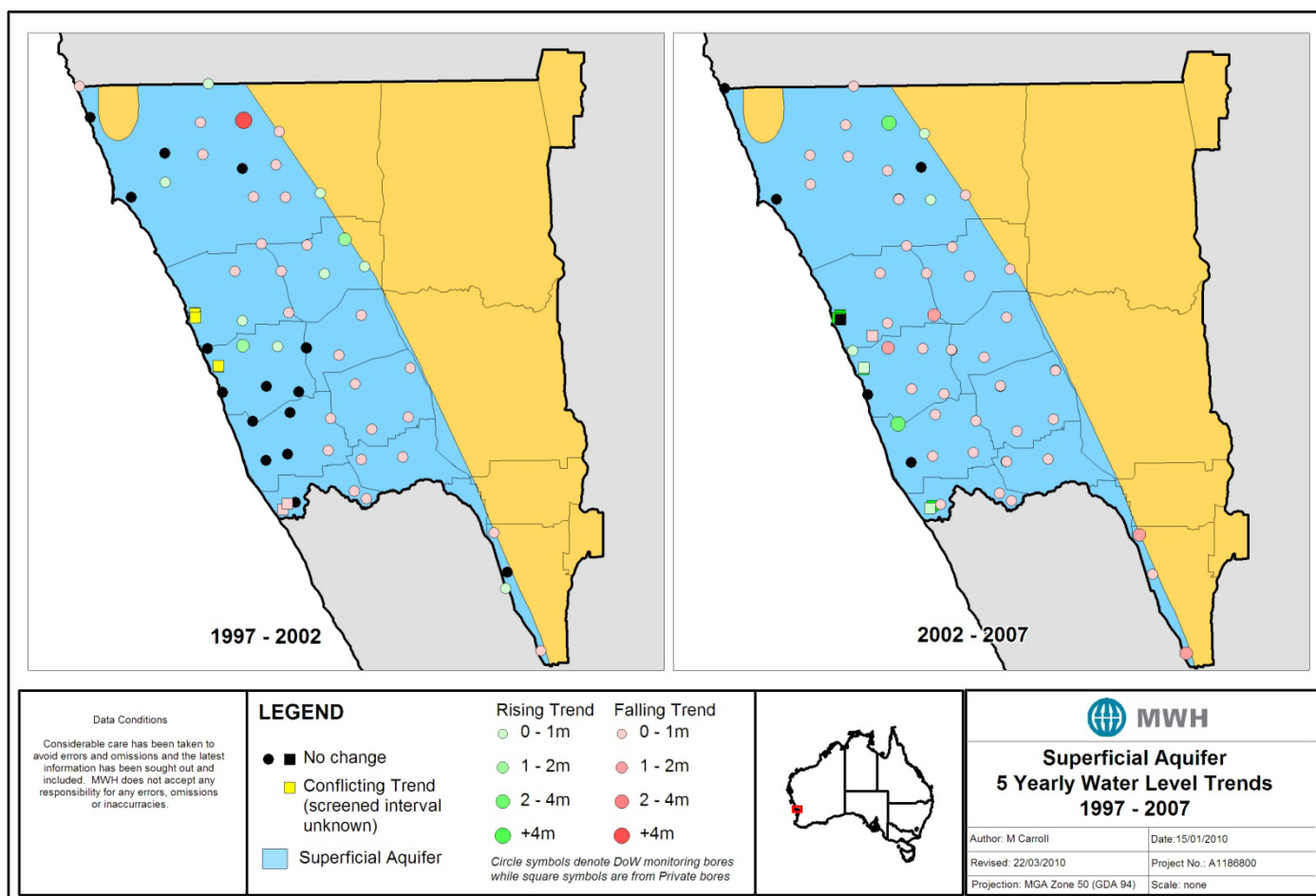
Groundwater monitoring in the Gingin groundwater area began in 1977 and continues today. The period from 1997 to 2007 contained the most consistent data for regional analysis of the major resources: the Superficial, Yarragadee, Leederville and Leederville-Parmelia aquifers.

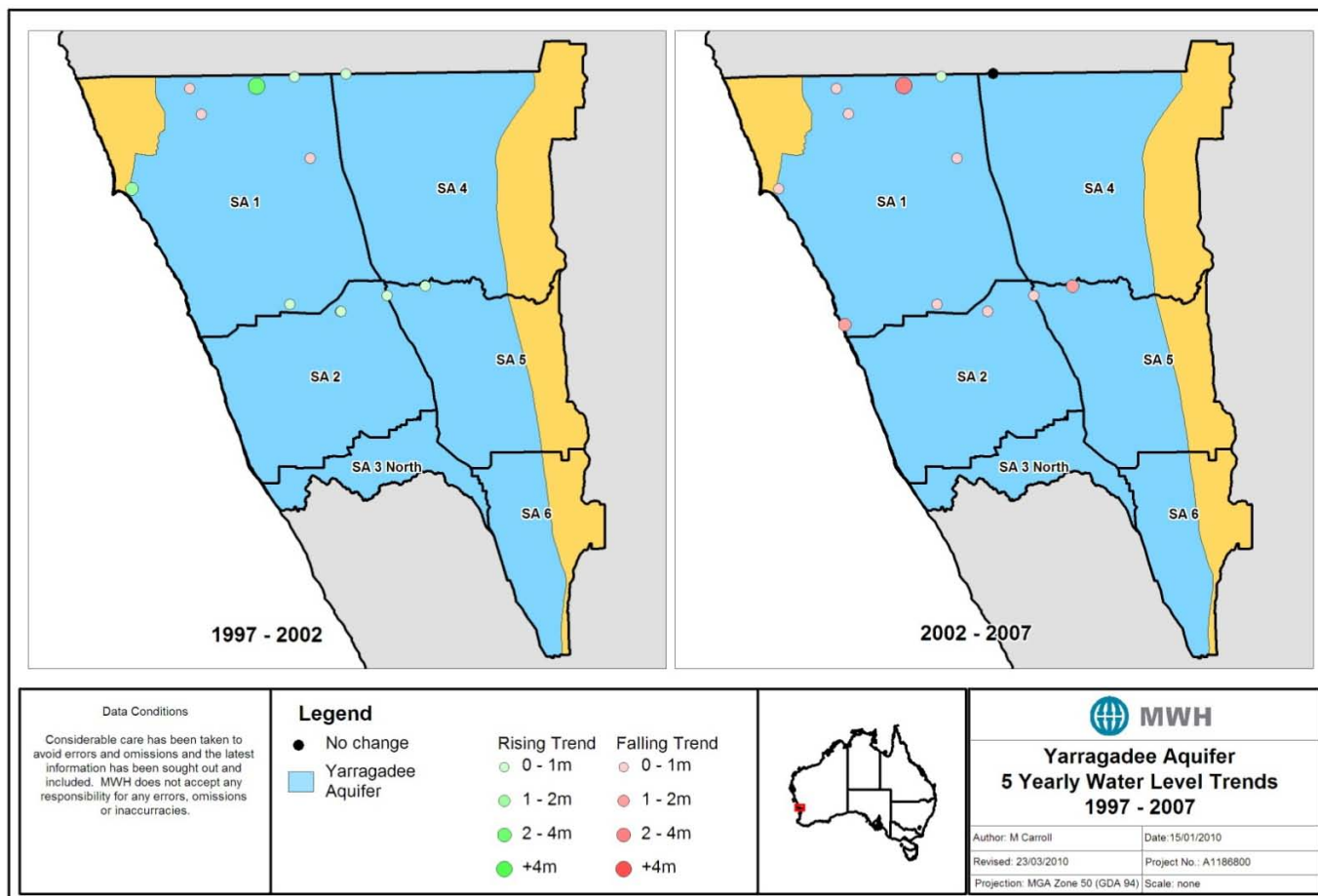
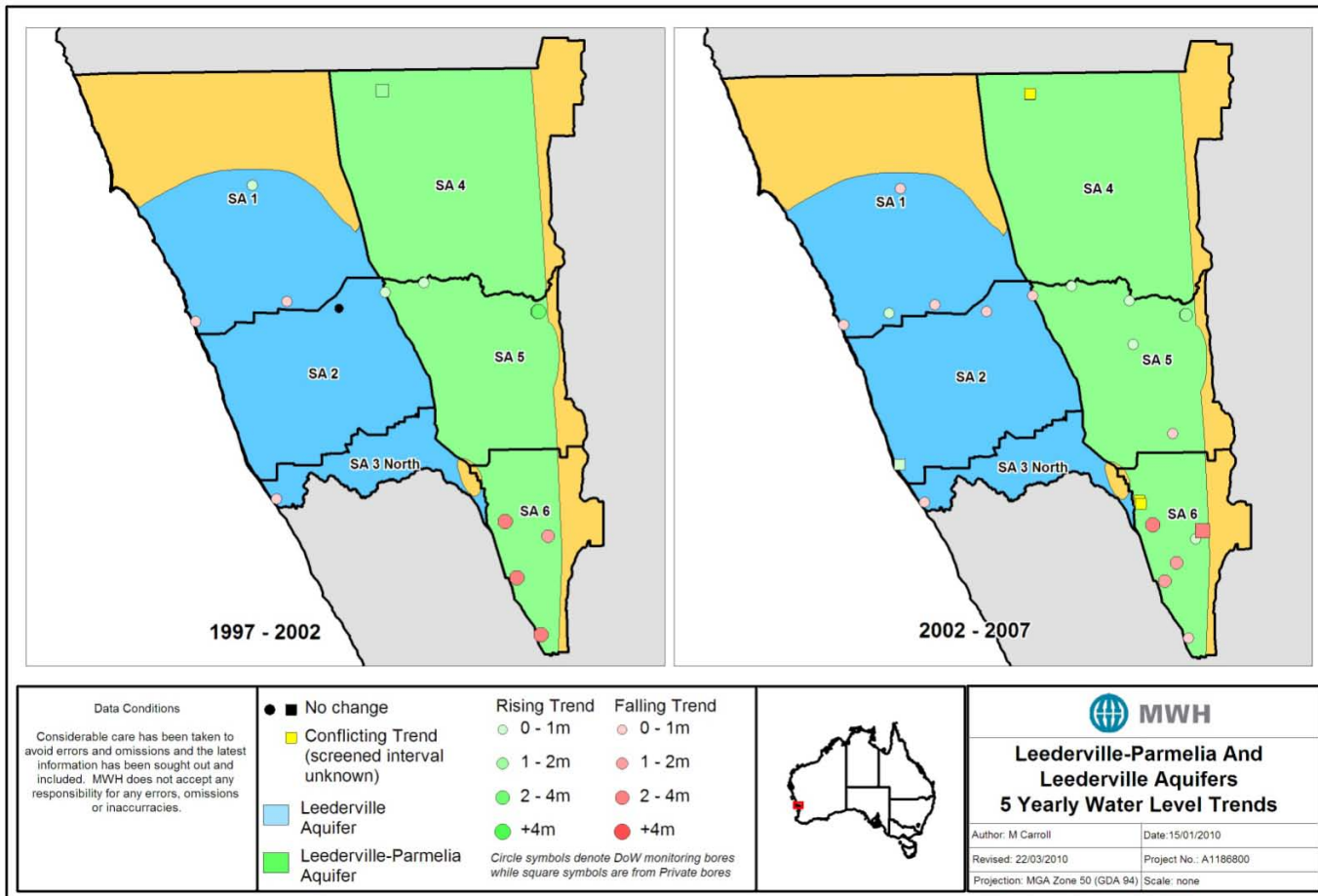
There is limited monitoring data available for the Lesueur and Mirrabooka aquifers. Due to there being no monitoring bores in the Surficial, Poison Hill or Cattamarra Coal Measures aquifers there is no information available.

Major findings from this report include:

- a widespread minor fall (of less than 1m) of the watertable in the Superficial aquifer, with localised declines of up to 4m
- minor decline across most of the Leederville aquifer
- declines in hydraulic head in the Leederville-Parmelia aquifer within the SA6 subarea
- widespread decline in hydraulic head within the Yarragadee aquifer.

Figures indicating changes in water level are provided below. Some localised anomalies are evident in the figures where a bore does not reflect the regional trend. This may be caused by: localised abstraction, equipment failure, short-term watertable rise from land clearing and aquifer properties.





It was not within the scope of this assessment to determine the cause of water level changes. Significantly less water entering the system from lower rainfall is the major contributor to the declines observed, particularly within the superficial aquifer. The proportion of this to other factors such as impacts from abstraction pressure has not been assessed.

## What does this mean for allocation limits

Where there are regional declines in water levels, a review of our allocation limits is required to ensure they remain appropriate. This is one of the reasons why we are currently reviewing the *2002 Interim Gingin groundwater allocation plan*.

As part of this review, the department has recalculated the amount of water entering the system based on current and future predicted rainfall. This will ensure that set allocation limits will not take more water out than what enters the system. This is an important step in stabilising groundwater decline. The last recharge calculation undertaken in 2002 did not take into account any predicted future change in rainfall in this area. The department will ensure there is sufficient water in the system to maintain or allow the natural transition of key environmental values in a drying climate.

## For more information

The full *Aquifer Trends Review* is available online at [www.water.wa.gov.au](http://www.water.wa.gov.au), along with other documentation from the Gingin groundwater area.

## The Swan Avon Regional office: Your local connection

In our last newsletter, you were introduced to the services provided through the three department offices of the Swan Avon Region. A core function of the Victoria Park office is managing the use of water resources through licensing under the *Rights in Water and Irrigation Act, 1914*. The licensing team manages existing users and assesses new applications for licences and permits across a wide range of industries. We have an experienced and dedicated team supported by senior officers and managers.

*Mike Kelly – Licensing Manager*



Mike has a background in natural resource management and has worked with the department for nearly a decade. Over this time, Mike has undertaken various roles within the region including measurement, waterways and land use planning. Mike can assist you with managing your water use and licensing issues and can be contacted on 6250 8000.

*Rod Short – Regional Hydrogeologist*



Rod has a strong background in water management from an agricultural perspective, having worked for both the Department of Agriculture and Food as well as the Department of Environment and Conservation in previous roles. Prior to moving to the Swan Avon Region in 2009, Rod managed the rural water planning process for the department. Rod's primary roles are to assess water license applications from a hydrogeological perspective, review monitoring reports and provide advice regarding land planning proposals. Rod can be contacted on 6250 8000.