

LEGEND

- REGION SCHEME RESERVES (MRS)**
- Civic and Cultural
 - Other Regional Roads
 - Parks and Recreation
 - Parks and Recreation - restricted
 - Port Installations
 - Primary Regional Roads
 - Railways
 - State Forests
 - Waterways
 - Water Catchments
 - Public Purposes - Car Park
 - Public Purposes - Commonwealth Government
 - Public Purposes - High School
 - Public Purposes - Hospital
 - Public Purposes - Prison
 - Public Purposes - Special Uses
 - Public Purposes - State Energy Commission
 - Public Purposes - Technical School
 - Public Purposes - University
 - Public Purposes - Water Authority of WA

LOCAL SCHEME RESERVES

- District Distributor Road
- Local Distributor Road
- Local Road
- Public Open Space
- Public Purposes : Education
- Public Purposes : Infrastructure Services

LOCAL SCHEME ZONES

- Centre
- Light Industry
- Mixed Use
- Private Clubs, Institutions and Place of Worship
- Residential
- Service Commercial
- Special Use
- Urban Development

OTHER CATEGORIES

- Scheme Area Boundary
- Local Government Boundary
- R20 R Codes
- A1 Additional Uses
- R1 Restricted Uses
- SU1 Special Use Area
- No Zone

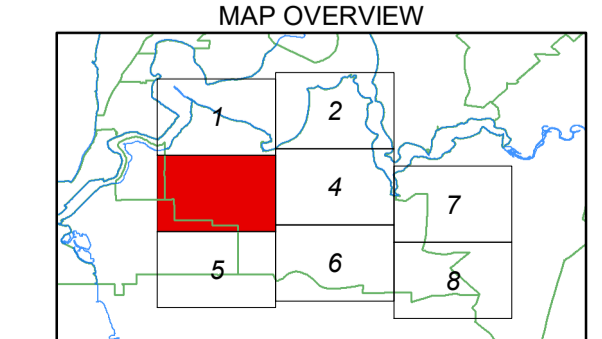
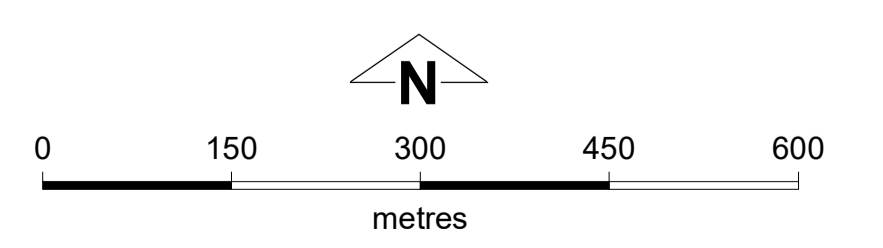
VERSION No 1



This electronic planning map has been prepared and made available for public inspection by the Western Australian Planning Commission pursuant to section 267B of the Planning and Development Act 2005. Whilst all care has been taken to accurately portray the original map, spatial data can be subject to modification over time. If you wish to use a copy of this map in any proceedings, a copy certified by the Commission (or its delegates) under section 267C is evidence of the contents of the electronic map or a part of the map.

If you have questions about the publication or certification of a map, or suspect any omissions or errors in this electronic planning map, please advise the Department of Planning, Lands and Heritage at spatialdata@dph.wa.gov.au.
Produced by Data Analytics, Department of Planning, Lands and Heritage.
Base Information Supplied by the Western Australian Land Information Authority, SLIP 1180-2020-1

City of Melville
Local Planning Scheme No. 6
(District Scheme)



Authorised: T.Sveaas
Plot Date: 14 December 2022
G.Gazette: Friday, 27 May 2016
Local Planning Scheme Map No. 3 of 8
MAP: Melville and Myare Localities

City of Melville
Local Planning Scheme No. 6
(District Scheme)