



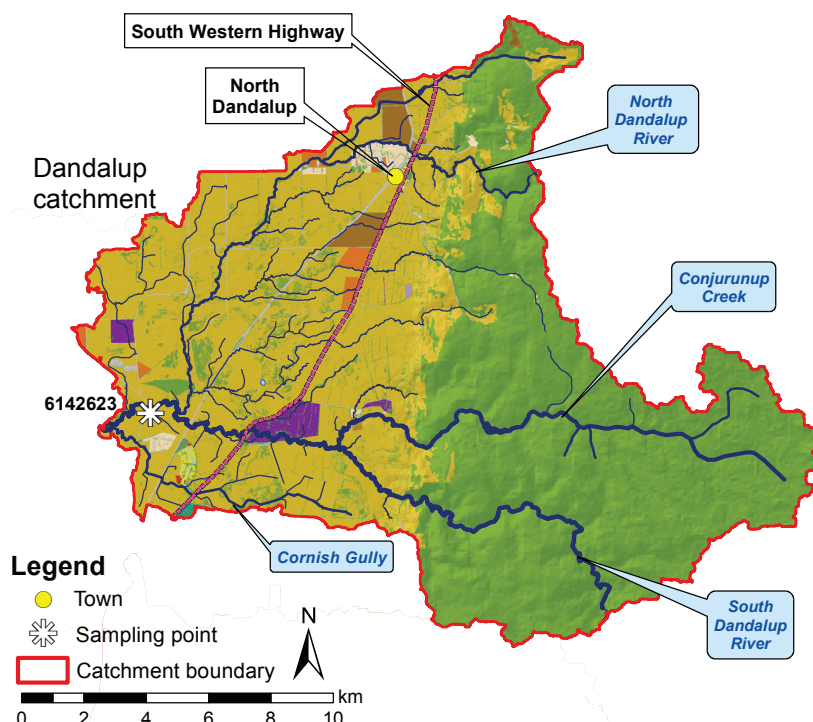
South Dandalup River

The Dandalup catchment includes the North and South Dandalup rivers below their dams, Conjurunup Creek and Cornish Gully. The South Dandalup River flows into the Murray River.

Water quality is monitored on the South Dandalup River at Patterson Road (6142623), downstream of the confluence with the North Dandalup River. There is no flow-gauging station located in the catchment.

Half the catchment lies on the Darling Plateau where the soils are mostly ironstone gravel with hard acidic red or yellow soils. West of the Darling Scarp sandy acidic yellow mottled soils dominate. Less than 5% of the catchment is subject to seasonal inundation, coinciding with a small section of sandy and clayey swamps and leached sands. About a quarter of the catchment (west of the South Western Highway) has a high or very high risk of phosphorus leaching to waterways.

To the east of the scarp the catchment is relatively undisturbed. West of the scarp the land has been cleared, mostly for agriculture such as stock grazing.



Upstream view of the South Dandalup River at Patterson Road – February 2008

Land use classification (2006)	Area	
	(km ²)	(%)
Animal keeping – non-farming (horses)	1.7	0.68
Cattle for beef (predominantly)	100	41
Cattle for dairy	3.0	1.2
Conservation and natural	129	53
Horticulture	0.06	0.03
Industry, manufacturing and transport	3.2	1.3
Lifestyle block	1.9	0.78
Mixed grazing	2.5	1.0
Offices, commercial and education	0.09	0.04
Plantation	0.20	0.08
Recreation	0.15	0.06
Residential	0.39	0.16
Total	243	100

Nutrient summary: median concentrations, loads and status classification at 6142623

Year	2003	2004	2005	2006	2007	2008	2009	2010	2011	2012	2013	2014	2015	2016
Annual flow (GL)	-	-	-	-	-	-	-	-	-	-	-	-	-	-
TN median (mg/L)	0.57	0.54	0.53	0.40	0.81	0.61	0.55	0.47	0.82	0.63	0.68	1.1	0.78	1.1
TP median (mg/L)	0.07	0.08	0.09	0.06	0.08	0.08	0.08	0.07	0.08	0.08	0.09	0.11	0.10	0.10
TN load (t/year)	-	-	-	-	-	-	-	-	-	-	-	-	-	-
TP load (t/year)	-	-	-	-	-	-	-	-	-	-	-	-	-	-

Status classification: Low (Green), Moderate (Yellow), High (Orange), Very high (Pink)

Status reported for three-year period end (i.e. 2012–14 reported in 2014)

TN = total nitrogen TP = total phosphorus

* Best estimate using available data
(- not applicable)