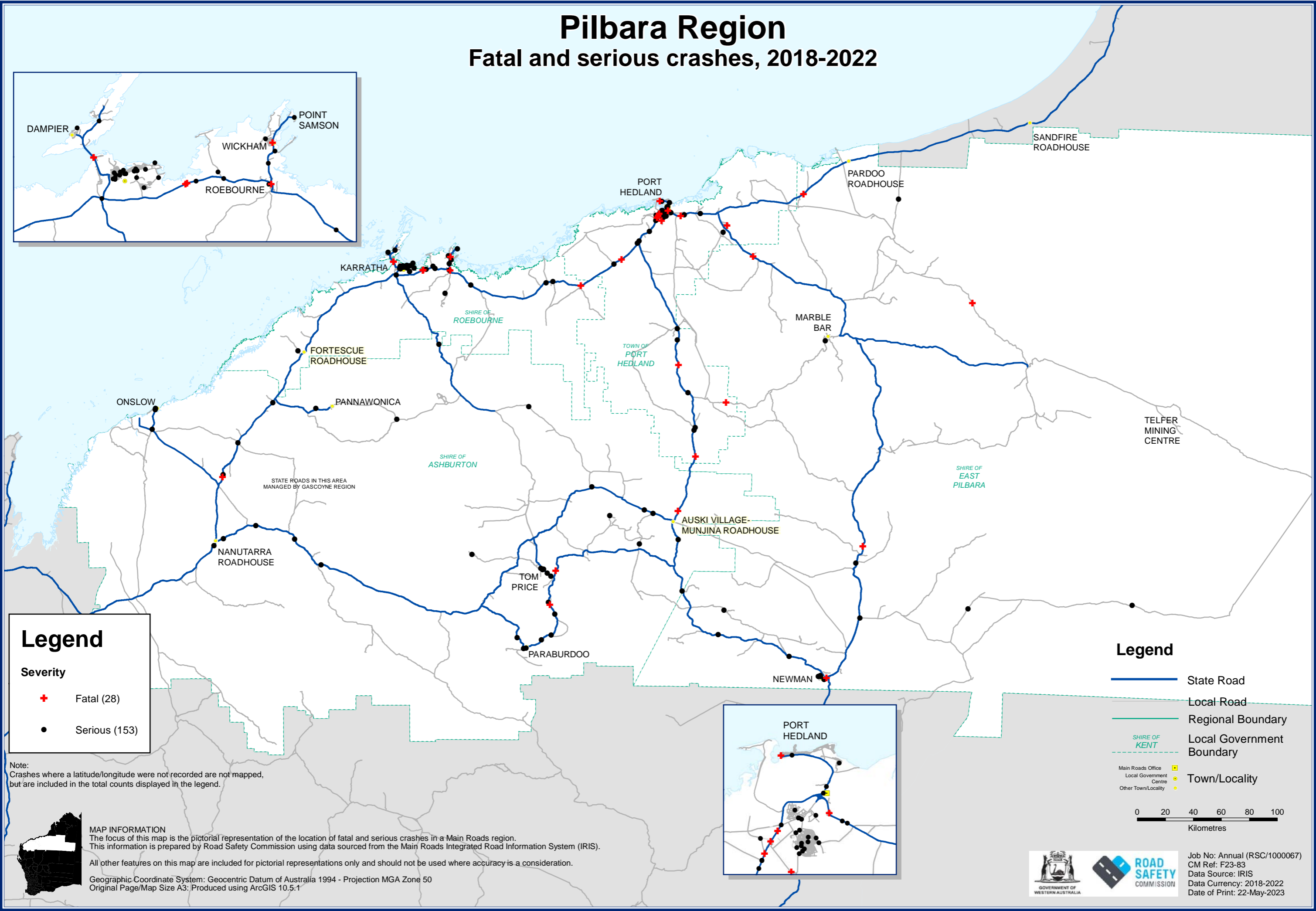
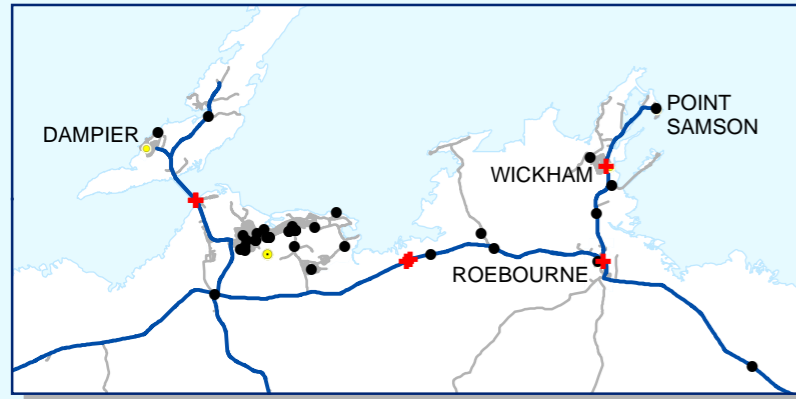


Pilbara Region

Fatal and serious crashes, 2018-2022



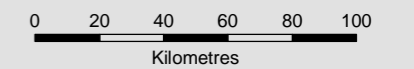
Legend

Severity

- + Fatal (28)
- Serious (153)

Legend

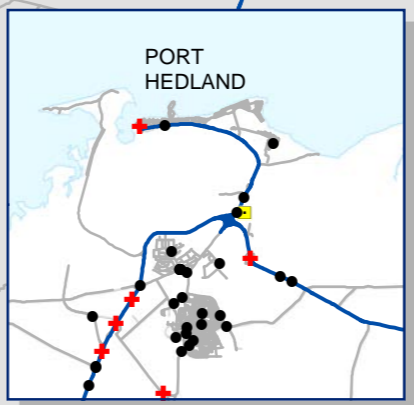
- State Road
- Local Road
- Regional Boundary
- - - Local Government Boundary
- Main Roads Office
- Local Government Centre
- Other Town/Locality



Note:
Crashes where a latitude/longitude were not recorded are not mapped, but are included in the total counts displayed in the legend.



MAP INFORMATION
The focus of this map is the pictorial representation of the location of fatal and serious crashes in a Main Roads region. This information is prepared by Road Safety Commission using data sourced from the Main Roads Integrated Road Information System (IRIS).
All other features on this map are included for pictorial representations only and should not be used where accuracy is a consideration.
Geographic Coordinate System: Geocentric Datum of Australia 1994 - Projection MGA Zone 50
Original Page/Map Size A3: Produced using ArcGIS 10.5.1



Job No: Annual (RSC/1000067)
CM Ref: F23-83
Data Source: IRIS
Data Currency: 2018-2022
Date of Print: 22-May-2023