



GOVERNMENT OF
WESTERN AUSTRALIA

WESTERN AUSTRALIA'S STATE INFRASTRUCTURE PROGRAMME 2023

Acknowledgement of Country

The Government of WA acknowledges the traditional custodians throughout WA and their continuing connection to the land, waters and community.

We pay our respects to all members of Aboriginal communities and their cultures, to Elders past, present and emerging.

Disclaimer

This publication reflects information as at the time of release. None of the information in this publication should be relied upon unless and until those seeking to rely on it have independently verified the accuracy and completeness of it.

How to navigate this document

The State Infrastructure Programme (SIP) provides a 10-year outlook of WA's significant infrastructure investment commitments, needs and opportunities.

The diagram below illustrates the time periods and asset journey phases covered by the SIP, aligned to the 20-year outlook of 2022 State Infrastructure Strategy delivered by Infrastructure Western Australia.

Executive Overview

Provides an overview of the SIP document, including legislative basis and document structure, and the 2023-24 State Budget.

SIP sector chapters

Overview of State Budget Infrastructure - commitments 2023-24 to 2026-27, \$20 million and above (Years 1 to 4).

The WA Government, economy and industry have been broken up into ten sectors:

- » Economic Development and Jobs
- » Transport
- » Energy
- » Water
- » Health and Mental Health
- » Education and Training
- » Housing Sector
- » Arts, Culture, Recreation and the Arts
- » Community Safety
- » Planning and Land Use

Infrastructure Outlook

Potential needs, opportunities, and challenges beyond State Budget period (5-10 years)

WA's significant infrastructure projects table

Appendix 1 provides significant infrastructure projects with information on projects in the planning and procurement phases of the asset journey, greater than \$20 million.

[Text link to external source \(e.g. web page\)](#)

[Text link to internal page](#)

Figure 1. Document navigation



CONTENTS

| | |
|---|-----------|
| PREMIER'S FOREWORD | 5 |
| 1 INTRODUCTION, CONTENT AND DOCUMENT OVERVIEW | 6 |
| The State Infrastructure Programme | 7 |
| Document Overview and Structure | 8 |
| Infrastructure Investment Overview | 10 |
| 2 ECONOMIC DEVELOPMENT AND JOBS | 12 |
| Overview of significant infrastructure commitments | 14 |
| 3 TRANSPORT | 15 |
| Overview of significant infrastructure commitments | 17 |
| 4 ENERGY | 20 |
| Overview of significant infrastructure commitments | 21 |
| 5 WATER | 22 |
| Overview of significant infrastructure commitments | 24 |
| 6 HEALTH AND MENTAL HEALTH | 25 |
| Overview of significant infrastructure commitments | 27 |
| 7 EDUCATION AND TRAINING | 28 |
| Overview of significant infrastructure commitments | 30 |
| 8 HOUSING SECTOR | 32 |
| Overview of significant infrastructure commitments | 34 |
| 9 ARTS, CULTURE, SPORT AND RECREATION | 35 |
| Overview of significant infrastructure commitments | 37 |
| 10 JUSTICE AND COMMUNITY SAFETY | 38 |
| Overview of significant infrastructure commitments | 40 |
| 11 PLANNING AND LAND USE | 41 |
| Overview of significant infrastructure commitments | 43 |
| 12 INFRASTRUCTURE OUTLOOK | 44 |
| Energy Infrastructure and Decarbonisation | 45 |
| A growing and ageing population, infrastructure planning and community resilience | 46 |
| Infrastructure to support economic diversification | 49 |
| Technological innovation | 51 |
| FIND OUT MORE | 53 |
| APPENDIX 1 | 58 |

Premier's foreword

I am proud to release Western Australia's first annual State Infrastructure Programme (SIP). The publication of this document marks commencement of the final core function of the Infrastructure WA Act 2019, since that piece of legislation came into force in June 2019. Publication of this SIP reflects the WA Government's commitment to long-term, coordinated infrastructure planning.

As reflected in the 2023-24 State Budget, the WA Government's infrastructure investment priorities include:

- » fostering WA jobs and a diversified economy;
- » expanding the health system and equipping it, ensuring capability and resilience;
- » responding to climate change and protecting our environment;
- » easing cost-of-living pressures on households; and
- » supporting regional WA.

With record infrastructure investment of over \$39 billion over the 2023-24 to 2026-27 period, the WA Government is focused on delivering infrastructure that addresses need, diversifies the economy and ensures the State is well positioned as the destination of choice for international education, tourism, business investment and trade.

The WA government acknowledges the contribution and advice that Infrastructure WA has provided in the development of this document, including the State's infrastructure needs and outlook. I thank Infrastructure WA and its board for this advice.



The Honourable Roger Cook
Premier

Minister for:
State and Industry Development
Jobs and Trade
Public Sector Management
Federal-State Relations

1

INTRODUCTION, CONTENT AND DOCUMENT OVERVIEW





The State Infrastructure Programme

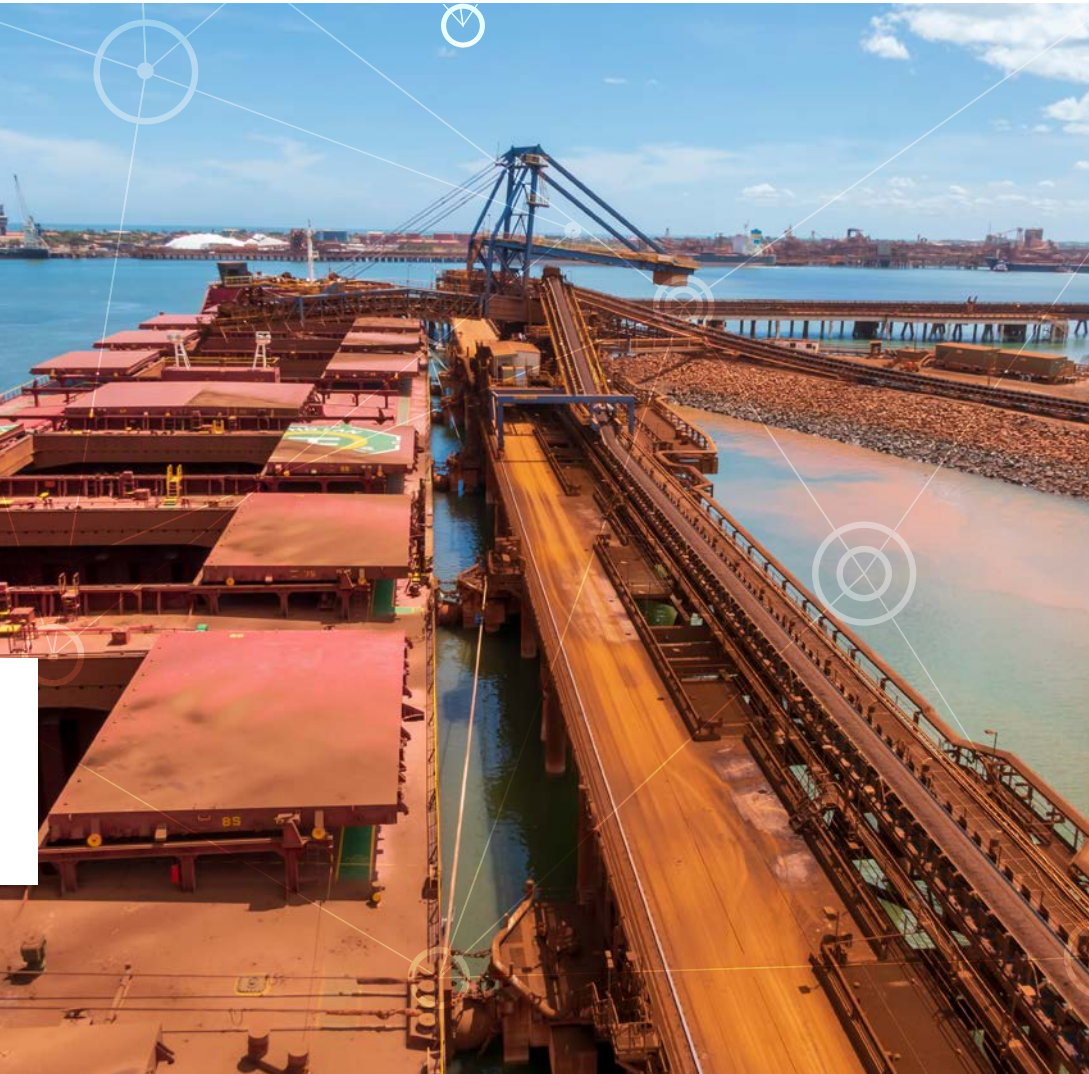
The State Infrastructure Programme (SIP) is a 10-year document, released by the Premier, as per the Infrastructure Western Australia Act 2019 (the Act).

Preparation of the SIP is consistent with relevant obligations and objectives of the Act, having been prepared by the Departments of Premier and Cabinet and Treasury with supporting advice from Infrastructure WA.

The 2023 SIP covers a 10-year period, comprising 2023-24 State Budget commitments (years 1 to 4) and a longer-term outlook on the State's infrastructure challenges, opportunities and priorities (years 5-10). Under the Act, the SIP is prepared annually, in consultation with the Treasurer. IWA provides the WA Government independent advice on WA's significant infrastructure needs with a particular focus on the 5-10-year horizon.

Document Overview and Structure

To provide an economy-wide view of the WA Government's infrastructure investment, this document identifies 10 sectors that capture the breadth of infrastructure investment across the State.



This document consists of two parts allowing navigation across the 10-year period covered by the SIP:

- » Chapters 2 through 11 provide sector overviews of the Government's significant infrastructure investments for years covered by the 2023-24 State Budget (2023-24 to 2026-27); and
- » Chapter 12 contains a description of the emerging needs, opportunities and challenges of Western Australia's infrastructure in the six years beyond 2026-27.

Appendix 1 provides a summarised list of committed infrastructure proposals that are in the planning and procurement stages as committed by the 2023-24 State Budget. For the purposes of the SIP, proposals estimated at over \$20 million in the Perth metropolitan and WA regions have been included. Figures in this document have been rounded to the nearest \$ million.

Where potential initiatives are identified as part of the years 5 to 10 infrastructure outlook, this should not be interpreted as a commitment to invest funds in those years. Necessarily, investment decisions by Government will remain subject to assessment and deliberations as part of each year's budget process, at the point in time in which an investment decision is needed.

Overview of the State Infrastructure Strategy - Foundations for a Stronger Tomorrow

- » IWA's first 20-year State Infrastructure Strategy (SIS), Foundations for a Stronger Tomorrow, was released in 2022 after over two years of consultation and engagement with government, industry, and the community.
- » The SIS recommends a vision and objectives across seven cross cutting themes and nine infrastructure sectors, with IWA making 93 recommendations on a wide range of areas, including climate action and sustainability, transport, health, education, regional economic development, and planning.
- » IWA leveraged community, industry and stakeholder feedback aligned to six strategic opportunities in adopting both a top-down methodology concurrent with a bottom-up review of Departmental and Government Trading Enterprises (GTE's) Strategic Asset Plans (SAP's) to make recommendations and identify needs.
- » Recommendations of the SIS address seven cross-cutting themes and nine infrastructure sectors, advocating 70 capital projects and programs of investment as well as a strong focus on non-build system improvements and a lens of demand management and prevention initiatives that endeavours to change the profile and scale of infrastructure need in years 5-20.
- » The WA Government published its response to the recommendations made in the SIS in February 2023.
- » The majority of recommendations were supported by the WA Government, with the response fully or partially supporting 98% of the SIS recommendations.
- » The WA Government has also made several investment commitments in the recent State Budget in line with recommendations in the SIS.

Infrastructure Investment Overview

An operating surplus of \$3.3 billion is forecast in the Western Australian State Budget 2023-24. Annual operating surpluses are also forecast in 2024-25, 2025-26 and 2026-27 providing an important source of non-debt funding to finance the Government's record investment in infrastructure.

As can be seen in figure 3 (below), the WA Government continues to invest heavily in economic and social infrastructure creating a pipeline of activity that benefits the construction industry and essential assets that support the resources and manufacturing, energy and small business sectors as well as the general community. The AIP also delivers on social and environmental objectives via the general government sector through business plans and departmental investment committed in the State Budget.

1 2022-23 figures are an estimate at the time of SIP drafting, preceding years are actuals.

2 Examples - Port Authorities, Energy & Water Corporations

ASSET INVESTMENT PROGRAM Total Public Sector

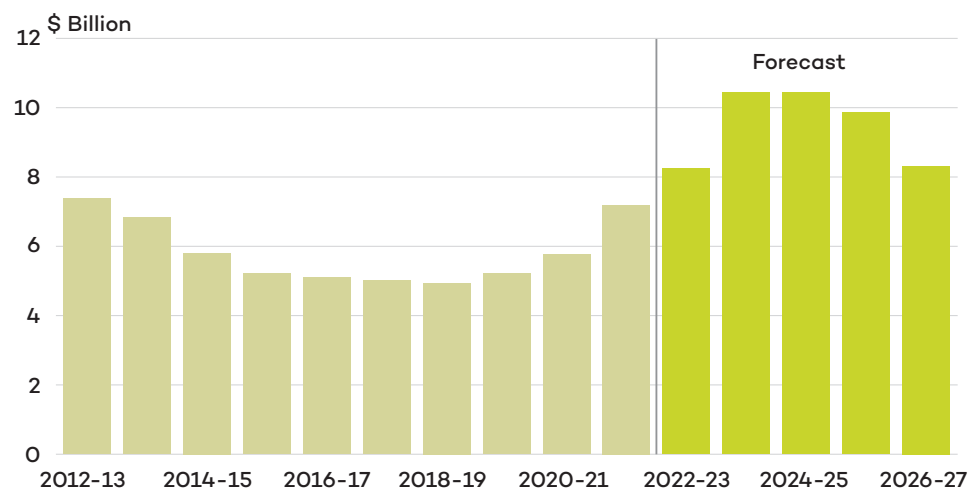
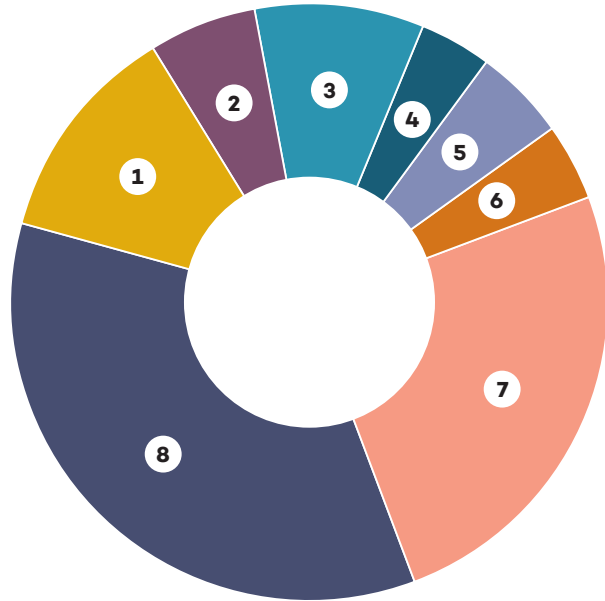


Figure 2. WA Asset Investment Program (AIP) spend annually, 2023-24 State Budget, Budget Paper 3, Economic and Fiscal Outlook - Fiscal Outlook and Strategy

The AIP, which represents the **WA Government's infrastructure investment** commitments for the 4-year State Budget forward estimates, totals \$39.1 billion over this period. The average annual asset investment by government over the ten years 2013-14 to 2022-23¹ was \$5.9 billion. The average annual asset investment forecast over the Budget until 2026-27 is \$9.8 billion.

Government sector investment represents \$15.6 billion (or 39.9% of the total program), while the public non-financial corporation sector² is responsible for the remaining \$23.5 billion.

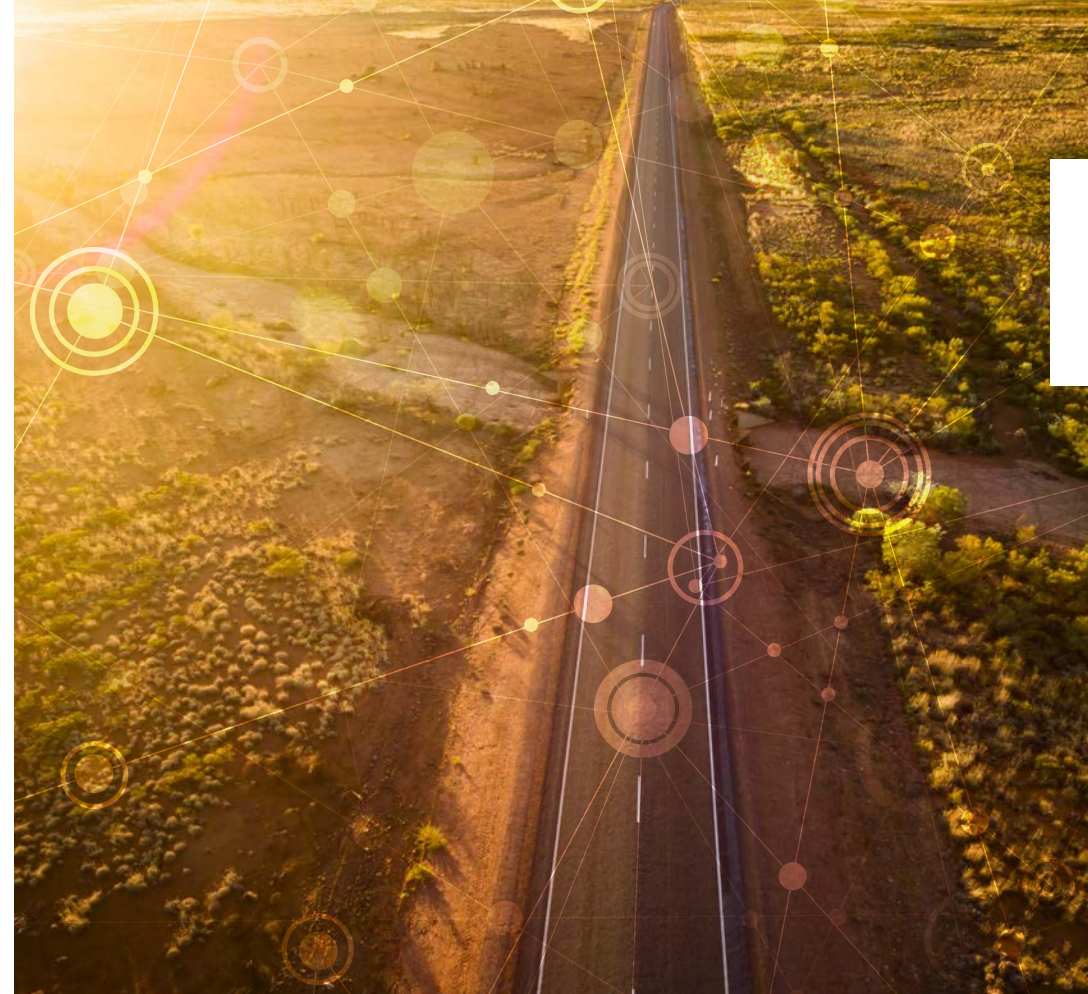
ASSET INVESTMENT PROGRAM
2023-24 to 2026-27



- 1 Electricity Utilities \$4,879m (12%)
- 2 Health \$2,516m (6%)
- 3 Water Corporation \$3,457m (9%)
- 4 Communities \$1,474m (4%)
- 5 Ports \$1,873m (5%)
- 6 Education \$1,545m (4%)
- 7 Other \$9,634m (25%)
- 8 Road, Rail and Transport \$13,626m (35%)

Note: Segments may not add due to rounding.

Figure 3. WA Asset Investment Program (AIP) spend across the Budget years (Years 1-4). 2023-24 State Budget, Budget Paper 3, Economic and Fiscal Outlook – Asset Investment



Information on WA's economic and financial performance, including infrastructure investment, can be found in the [Western Australian State Budget 2023-24](#).

Additional information regarding the Western Australian economy and outlook can be found in the [Find out more](#) section at the end of the document.

2

ECONOMIC DEVELOPMENT AND JOBS

WA has a strong export-oriented economy with these resources and agricultural sectors supplying growing demand around the world for minerals, natural gas as a transition fuel and food more generally.





A key WA Government priority is to diversify the economy, strengthen resilience to fluctuating global markets and support long term sustainability. Emerging industries that can capitalise on WA's economic advantages and promising market opportunities are being targeted to drive business and job growth into the future.

The WA Government is investing in significant infrastructure across WA to sustain WA's global competitiveness and help attract new industries to the state. Access to project-ready land and common-use infrastructure such as ports, roads, rail and utilities is a key focus to support new projects and reduce commercial risk. The WA Government is also driving transition of the state's electricity network toward renewables, which will lower the financial and environmental cost of doing business in WA.



Overview of significant infrastructure commitments

The WA Government has committed funding to several significant infrastructure projects to drive economic development and job growth. AIP committed for the economic development and jobs sector, for 2023-24 to 2026-27, totals \$680 million, and includes the following substantial project initiatives:

- » a \$315 million investment in the Department of Primary Industries and Regional Development is a new metropolitan facility, located at Murdoch University's Perth campus. This investment will deliver modern laboratory and technical workspaces to protect and grow Western Australia's primary industries for future generations; and
- » investment of \$50 million to support the Pilbara Hydrogen Hub. These funds will develop hydrogen/ammonia pipeline infrastructure connecting strategic industrial areas and leveraging the government's energy transition roadmap. Funding is also deployed for the creation of a Clean Energy Training and Research Centre, and port upgrades to facilitate opportunities for new energy exports.

3

TRANSPORT

WA's modern and extensive transport system facilitates connectivity and mobility across our vast state, the rest of the country and with global trading partners.





The WA Government is committed to providing a safe, efficient, resilient, accessible, and sustainable transport network to support WA's population and economic growth and net-zero targets.

Current investment in a significant pipeline of transport projects will leave a legacy that will shape Perth and help to enhance the state's productivity and global competitiveness. METRONET is extending the passenger rail network and creating vibrant new high-density station precincts across the Perth metropolitan area.

Strengthening WA's freight network is also a major focus, with planning of Westport expected to result in co-location of the state's main container port and industrial precinct, the Western Trade Coast. More generally, optimisation of trade-enabling investments and import/export opportunities, trade diversification and enhanced economic capability of major industries and regions will be facilitated through the current ports' investment programs.

Overview of significant infrastructure commitments

The 2023-23 Budget will see over \$13.6 billion invested in road, rail and transport infrastructure projects in the 2023-24 to 2026-27 period. This is the most substantial portion of the WA Government's AIP, representing 35% of the total four year spend.

The centrepiece of this investment is METRONET, alongside many other key road and rail projects across WA, and improvements to support trade and commerce via infrastructure investments in WA's five port authorities. A selection of key projects is provided here, with further details in Appendix 1.

METRONET

Investment of \$5.9 billion in METRONET projects over the four years of the current Budget will continue to transform Perth's public transport network.

A record \$3.1 billion will be spent in 2023-24 on the METRONET program of works. This investment in public transport infrastructure continues to support thousands of local jobs and businesses, will ultimately reduce the costs of road congestion, and help meet Perth's future development needs.

Key milestones for the METRONET program in the current Budget year are:

- » the planned opening of the new Yanchep Rail Extension;
- » the first C-series train into passenger service on the Joondalup and Mandurah lines, following extensive testing on the network;
- » practical completion of the Public Transport Operations Control Centre, which will house the new infrastructure and personnel needed to manage the day-to-day operations of Perth's expanding public transport network; and
- » the southern concourse of the new Bayswater Station through completion of a new combined rail bridge and elevated southern station platform over King William Street.



An additional \$1.7 billion in State and Commonwealth funding for METRONET initiatives were committed in the 2023-24 Budget, including:

- » the construction of the Bellevue Depot, which will support the railcar program by providing train maintenance facilities for urban passenger rail services;
- » further investment in the High-Capacity Signalling program of works, which will increase the capacity of the rail network, improve safety, and allow trains to operate more efficiently; and
- » further investment in the Morley–Ellenbrook Line, Yanchep Rail Extension, Thornlie–Cockburn Link and Bayswater Station projects as escalating costs and supply chain constraints continue to affect the construction industry.

Rail Infrastructure Program

The Rail Infrastructure Program is a \$698 million investment program that supports the upgrade and maintenance of the existing rail network, including signalling, pedestrian gates, level crossings and rail bridge works.

Electric Buses (E-Buses)

The WA Government invested \$125 million towards an electric bus program in the 2023-24 State Budget, complemented by a \$125 million commitment from Federal Government. This will deliver 130 new locally-built electric buses and depot upgrades including charging infrastructure.

Western Australia Agricultural Supply Chain Improvements (WASCI)

At an estimated cost of \$200 million, WASCI will deliver increased freight capacities along key agricultural transport routes in the Wheatbelt, Great Southern, Mid-West and Goldfields Esperance regions. A component of this program is the upgrade of 11 rail sidings through a \$68 million commitment.

Westport

Main Roads allocated \$50 million to progress strategic land acquisitions for the Westport precinct and key freight routes to enable interconnectivity.

Regional Road Projects

The 2023-24 Budget included additional infrastructure funding of \$246 million – with joint funding by Commonwealth and State Government across a number of regional road projects currently in delivery. These include:

- » \$100 million for delivery of the Bunbury Outer Ring Road works;
- » \$40 million for Albany Ring Road, and a further \$37 million for a new grade separation of Menang Drive and Chester Pass Road; and
- » \$30 million for Bussell Highway Duplication (Stages 1 and 2).

Regional Road Safety Program

By treating roads with shoulder sealing and/or audible edge lines, the Regional Road Safety Program aims to significantly reduce the number of 'run-off road' crashes. The 2023-24 Budget includes an additional \$175 million to continue these low-cost and highly effective safety treatments on regional roads in 2024-25.



Port Authorities

Reflecting the critical importance of WA's port authorities to our economy, the 2023-24 State Budget provides for investment of over \$1.3 billion in the 2023-24 to 2026-27 period, across the Fremantle, Kimberley, Mid West, Pilbara, and Southern Ports Authorities.

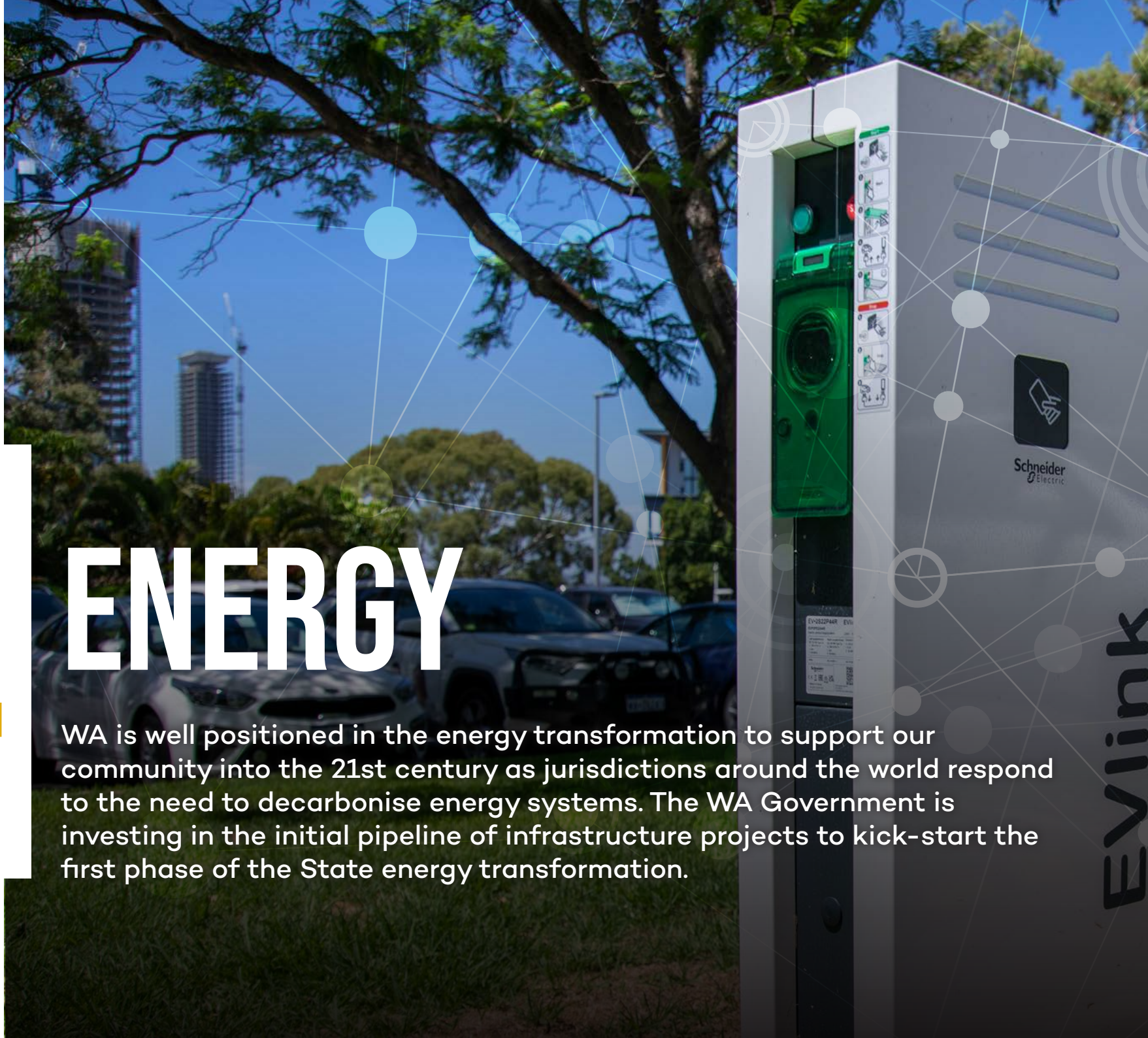
Key infrastructure projects at the ports include:

- » An extension to the Dampier Cargo Wharf which will provide an additional 200 metre length of berth in Dampier for the export of bulk solids as well as import/export of general cargoes and other commodities as part of the government commitment to reform trade and deliver shipping diversification and supply chain optionality. The total expenditure forecast is \$195 million.
- » The Port of Port Hedland's Lumsden Point General Cargo Facility and Logistics Hub which will meet the demand for existing and new trade growth through the Pilbara region. Expenditure on the project by the Government is forecast to be \$129 million across 2022-23 through 2024-25. The Commonwealth Government is investing \$565 million to support common user port upgrades in the Pilbara, part of which contributes to the development of Lumsden Point.
- » The Fremantle Port Authority is replacing the existing import system for cement clinker at the Kwinana Bulk Terminal. The project has a revised total cost of \$62 million and is expected to be complete early in 2023-24

4

ENERGY

WA is well positioned in the energy transformation to support our community into the 21st century as jurisdictions around the world respond to the need to decarbonise energy systems. The WA Government is investing in the initial pipeline of infrastructure projects to kick-start the first phase of the State energy transformation.



Overview of significant infrastructure commitments

WA Government spending on electricity infrastructure by Western Australian electricity corporations (Western Power, Synergy, and Horizon Power) over the 2023-24 to 2026-27 period totals \$4.9 billion.

This commitment will fund several significant projects to transform WA's energy system including:

- » \$4.4 billion to support Western Power's electricity transmission and distribution network grid as it continues to evolve and transform to best meet the needs of WA electricity producers and consumers.
- » Horizon Power's spend of over \$300 million in regional communities in the next four years. Projects include standalone power systems, energy storage in the regions and network risk management upgrades. Other priorities include EV charging infrastructure network, network integrated solar connections, mid-west solar program, Dampier resilience project and distributed energy resource management rollouts.

In addition, \$2.7 billion will be invested for the South West Interconnected System (SWIS, southern WA's interconnected electricity generation and network system) decarbonisation, renewable generation and storage programs, replacing generation from the State-owned coal-fired power stations and enabling delivery of the Government's approved decarbonisation commitments. This forms part of the plan that the Government announced in **June 2022** regarding investment in renewable energy projects.



5

WATER

Water is one of WA's most vital commodities. Securing the state's water supply is crucial to the environment, the economy and the community's wellbeing and way of life.





The WA Government has been responding to WA's changing climate to ensure the state's water supply can cater for a growing population and economy in an increasingly sustainable and environmentally responsible manner.

Innovative climate-independent supply and management solutions will play an increasing role to support adaptation and mitigate the impacts of a drying climate on the state's traditional water sources and natural environment.

The WA Government is investing in a pipeline of projects to meet the state's water needs. Measures to ensure the Perth and Peel region has an effective and affordable water supply, such as demand management, water efficiency, desalination plants and groundwater replenishment, have been a major focus.

Overview of significant infrastructure commitments

The 2023-24 State Budget has allocated \$3.5 billion across the 2023-24 to 2026-27 period for investment in water infrastructure projects, primarily delivered by the Water Corporation.

Substantial investments in metro and regional wastewater, drainage, supply, storage, and sustainability services will support the upgrade and development of the state-wide water utility portfolio.

Significant infrastructure commitments include:

- » a total of \$65 million will be spent on enabling works in 2023-24 to support the delivery of the Alkimos Desalination Plant.
- » expenditure on wastewater treatment projects in Perth's northern and southern corridors totals \$202 million in 2023-24, including a \$57 million upgrade to the Woodman Point Water Resource Recovery Facility, which has a total infrastructure investment cost of \$285 million.
- » funding of \$189 million in 2023-24 towards the Flat Rocks Wind Farm Stage Two. The windfarm will support the Government's commitment to powering Perth's desalination plants with renewable energy, as well as reducing greenhouse gas emissions by 2030. Water Corporation's energy infrastructure estimated total cost is \$322 million from 2022-23 to 2024-25
- » \$202 million will be spent in 2023-24 on a range of regional water projects, including \$30 million allocated to the construction of a water treatment plant in Onslow, which will produce 1.5 million litres of potable water per day.
- » Aqwest investing \$22 million over the Budget period to build the Bunbury Water Resource Recovery Scheme, with a focus on project implementation of aquifer recharge as an alternative to constructing large water mains.



6

HEALTH AND MENTAL HEALTH

WA's health system underpinned the state's recent world-leading COVID-19 pandemic response and contributes to our reputation as a great community to live in.





The WA Government continues to invest strongly in health infrastructure to continue to meet the needs and expectations of a growing population. Infrastructure priorities include both completion of new hospitals and the expansion of existing hospitals through additional wards to expand bed capacity under 30 separately funded projects such as the new Women and Babies Hospital and reconfiguration of mental health facilities at the Graylands facility.

WA Government has committed \$2.6 billion over the next four years investing in health and mental health projects, including \$801 million in 2023-24.

Overview of significant infrastructure commitments

New Women and Babies Hospital Project

At an estimated total cost of \$1.8 billion, the Government has allocated \$544 million to commence works within the Fiona Stanley Hospital (FSH) Precinct on the new Women and Babies Hospital.

Graylands Reconfiguration and Forensics Project

\$219 million has been provided for the first stage of works for the Graylands Reconfiguration and Forensic Taskforce project.

Bentley Health Service Surgicentre

The Commonwealth and State Governments have jointly invested in the Bentley Health Service Surgicentre, at an estimated cost of \$101 million with an additional \$49 million beyond 2026-27. The Surgicentre will enable the separation of elective surgery from emergency surgery and will house six new operating theatres, two new procedure rooms, a 24-bed surgical in-patient unit and a new central sterilisation services department.

Digital Capability Fund – Digital/Electronic Medical Record Program

As part of a prioritised, staged strategy to progress uptake of Electronic Medical Records across the Western Australian health system, the Government will invest a further \$99 million to complete the roll-out of Digital Medical Records and Single Sign-on functionality at all public hospitals by 2024-25.

The implementation of Electronic Medical Records at Intensive Care Units in both the Perth Children's Hospital and Sir Charles Gairdner Hospital brings total investment in the program to \$157 million.

St John of God Midland Public Hospital Expansion

To further expand public hospital capacity an additional \$81 million will be spent in 2026-27 to purchase the private patient facility at St John of God Midland Public Hospital. This includes 60 in-patient beds, three operating rooms, and the associated portion of shared infrastructure.



7 EDUCATION AND TRAINING

WA's strong education and training sector is a major contributor to the State's prosperity and growth. The training sector is vital in ensuring the workforce is highly skilled and job ready.



Public schools, TAFEs, colleges, and universities are working to keep pace with a changing economy to match knowledge and capabilities with future needs.

Private sector and non-government providers play a key role through continued support and policy focus on WA's education and training needs, markets, gaps, and opportunities.

Overview of significant infrastructure commitments

Education

Through the Department of Education, the WA Government is committed to delivering high quality education through the delivery of upgrades to existing schools and investment in new school facilities.

The Department of Education's planned Asset Investment Program for 2023-24 to 2026-27 totals \$1.5 billion, within which 2023-24 commitments total \$627 million.

This significant capital investment will deliver new and improved educational facilities to meet enrolment growth, upgrade ageing infrastructure and enhance educational opportunities for all public-school students.

Examples of projects include:

- » \$52 million for Alkimos College Stage 2;
- » \$59 million for the new Piara Waters Senior High School;
- » \$100 million for major upgrades of Rockingham Senior High School and Education Support Centre, and Safety Bay Senior High School;
- » \$124 million to purchase transportable buildings as part of the ongoing transportable accommodation program;
- » outlays totalling \$21 million to build new education support facilities at Wanneroo Secondary College and Waggrakine Primary School; and
- » \$72 million for the redevelopment of Roebourne District High School.

Training

The Department of Training and Workforce Development's AIP generates essential job capabilities for Western Australia's present and future. Employment and Training opportunities provide the basis for industry and community growth.

The \$240 million capital investment in the five WA TAFE colleges over the four years to 2026/27 is the largest TAFE asset investment program in Western Australia's history - providing job capabilities for local communities for Western Australians across the State.



Projects in the program include:

- » \$20 million specialist light automotive trade training workshop at North Metropolitan TAFE's Joondalup campus to cater for emerging automotive and information and communications technologies;
- » construction of a \$48 million multi-storey specialist teaching block at North Metropolitan TAFE's Balga campus to provide technology-enabled classrooms for training delivery in building and construction trades, community services, general education, hairdressing, and adult migrant education;
- » \$43 million major upgrade to North Regional TAFE's Pundulumurra campus (South Hedland) providing new workshop facilities and expanded training for plant mechanic, engineering and auto electrical trades, and a new commercial cookery training kitchen focused on resource sector requirements;
- » development of a new \$39 million South Metropolitan TAFE Armadale Training Campus to deliver community services, childcare, mental health, business, education support and general education programs, and new specialist training in warehousing/logistics, ICT, emerging industries, and cyber security; and
- » a new trades workshop at South Regional TAFE's Albany campus costing \$22 million to replace workshops and provide contemporary training spaces for plumbing, electrical, automotive, metals and engineering.

8

HOUSING SECTOR

Housing is fundamental to WA's social and economic prosperity. Fit for purpose housing enables WA to attract and retain skilled workers that drives economic growth, and also alleviates pressure on other social services such as health and justice.



At present, WA, like other parts of Australia and the developed world, is experiencing strong demand for housing across a range of housing sub-sectors, including social and affordable housing.

There are over 42,500 social houses in WA. Growing the number of new social homes through the public and community housing sector is a major focus of the WA Government.

Overview of significant infrastructure commitments

Investment in Social Housing

The Government delivered a \$511 million boost for social housing and homelessness in the recent Budget, increasing total investment to **\$2.6 billion over the next four years**.

The additional investment includes:

- » a \$450 million increase in funding to the Social Housing Investment Fund, which increases the total number of social houses to be added to 4,000, with 1,200 already delivered.
- » \$49 million provisioned for a pilot 100-home Regional Supportive Landlord Model, building on a pilot program roll out in the Perth and Peel region; and
- » funding for the Office of Homelessness to support the delivery of the State's first 10-year homelessness strategy.

Refurbishment of Social Housing

\$77 million will be spent over the four-year Budget period on the refurbishment of approximately 553 social housing dwellings.

Refurbishments provide a value-for-money solution to maintaining existing social housing stock levels, particularly in the context of current market conditions that have driven up the cost of new builds.

Government Regional Officer Housing

To address demand for Government Regional Officer Housing (GROH), the Government will spend an additional \$61.6 million over the forward estimates period, including \$41 million to acquire new dwellings and purchase land for future construction and \$20 million to refurbish 133 existing GROH properties.

9

ARTS, CULTURE, SPORT AND RECREATION

The Arts, Culture, Sporting and Recreation sector unites the community, provides employment, culture and association, nurtures talent and embraces diversity.



Infrastructure is a critical enabler - providing the settings for communities to participate in cultural, physical activities so important to WA's attractive, inclusive, and envied lifestyle.

Strategic plans such as the [WA Cultural Infrastructure Framework 2030+](#) and [State Sporting Infrastructure Plan](#) guide public investment in arts and culture and sport and recreation infrastructure across WA.

The WA Government is delivering a pipeline of infrastructure across the sector to support growth in population and tourism, events and creative industries. This includes completion of the new State Football Center and HBF Park upgrades during 2023, which featured when WA successfully hosted a number of [2023 FIFA Women's World Cup](#) matches in Perth.

Overview of significant infrastructure commitments

The 2023-24 State Budget funds several significant projects to support arts, culture, sport, and recreation across the State.

Cultural and Sporting facilities

Investment in cultural and sporting infrastructure totals \$567 million over the next four years and includes:

- » \$135 million to redevelop the State Hockey Centre following Western Australia's successful bid to host the Hockey Australia High Performance Program and Centre of Excellence;
- » a \$98 million investment in the Perth Concert Hall redevelopment, securing the future of the venue and providing the West Australian Symphony Orchestra with a permanent home, bringing the total cost of the redevelopment to \$150 million; and
- » a further \$80 million of funding for the WACA ground improvement project and aquatic facility, inclusive of a \$25 million contribution from the City of Perth.

Biodiversity Conservation and Attractions

The Department of Biodiversity Conservation and Attractions will continue with ongoing investment programs at the Perth Zoo, Rottnest Island, Kings Park and in the national parks and other lands and waters of the recreation and conservation estate of WA. The total AIP over the forward estimate period to 2026-27 is \$363 million, including:

- » \$30 million for the Perth Zoo Master Plan 2040;
- » \$29 million for the Tourism Package – Peri-Urban Parks; and
- » \$55 million for Rottnest Island Authority – Electrical Infrastructure Upgrade.

10

JUSTICE AND COMMUNITY SAFETY

The Justice and Community Safety sector delivers services to ensure a safe and secure community. This includes metropolitan, regional, remote and specialist policing services, road safety awareness, a fair and just legal system, corrective services, and a timely and effective response to emergency management.



Modern infrastructure that underpins the operational capabilities and resilience of the sector will be vital to keep pace with social and environmental change and economic activity. The sector has been a vital part of WA's world-leading COVID-19 pandemic response and continues to assist communities recovering from the extreme 2022 floods in the Kimberley region.

The WA Government continues to invest in a pipeline of Community Safety infrastructure. Immediate priorities include refurbishment and expansion of police facilities to accommodate WA's needs.



Overview of significant infrastructure commitments

Investment in facilities to support community safety total \$570 million over the Budget forecast period to 2026-27. Key investments include:

- » \$82 million to upgrade and enhance the Emergency radio network shared by the Western Australia Police Force, Fire and Emergency Services, and Justice. This will deliver essential works associated with radio devices and network upgrades across the agencies;
- » An investment of \$58 million on the Casuarina Prison Expansion project, which will provide additional accommodation and support infrastructure to manage a capacity of 1,900 prisoners; and
- » Committing \$30 million for a range of infrastructure upgrades at Banksia Hill Detention Centre to provide a secure environment for juveniles in detention, including additional roof and fence enhancements, CCTV upgrades, educational ICT upgrades, improved media streaming capabilities and the commencement of construction of a dedicated Crisis Care Unit.

11

PLANNING AND LAND USE

The Planning and Land Use sector delivers residential, commercial and industrial land and infrastructure to support sustainable development across WA.



State strategic plans such as Perth and Peel @3.5 million, and the **Industrial Lands Strategy** will guide public and private investment in the creation of great places to live, work, develop and visit.

Perth's world-class built environment, which has been purposefully planned and developed to both complement and protect its significant natural features, is a major factor in why the State capital is regularly ranked as one of the most liveable cities on the planet.

The WA Government continues to progress a pipeline of major projects such as **Ocean Reef Marina**, **Subi East** and the **Global Advanced Industries Hub** in the Western Trade Coast to unlock land for population and industry growth while enhancing the social and economic vitality of WA.

METRONET is opening new train stations and precincts enabling transit orientated urban development as the passenger rail network is expanded across Perth. Reforming WA's planning system is also a major focus, providing more streamlined, efficient and transparent processes to manage the state's increasingly complex planning and development needs.

Overview of significant infrastructure commitments

Total AIP over the period for the Planning and Land Use portfolio comprising the Department of Planning, Lands and Heritage; the WA Planning Commission; the WA Land Information Authority; Development WA and the Heritage Council and the National Trust of Australia (WA) is \$2 billion.

The WA Government has committed investment to several significant projects, supporting planning and land use in WA.

Ocean Reef Marina

The Ocean Reef Marina, which has an estimated total cost of \$283 million, with \$185 million to be spent through to 2026-27.

Construction of this project commenced in 2020-21. When complete, the marina will include capacity for up to 550 boat pens, 200 boat stackers, boat ramps and up to 12,000 square metres of retail and commercial floor space, as well as more than 5 ha of community spaces.

Subi East Project

The Subi East Project involves the rejuvenation of 35 hectares of land to create a vibrant new north-eastern gateway to Subiaco.

Including Subiaco Oval, Mueller Park, Bob Hawke College and the former Princess Margaret Hospital site, the project has an estimated total cost of \$143 million, with \$57 million to be across the current Budget.



12

INFRASTRUCTURE OUTLOOK

A range of significant trends, needs, opportunities and challenges will play a key role in shaping WA's infrastructure development and investment over the next decade.

Energy Infrastructure and Decarbonisation

Decarbonisation and Emissions

Climate change and decarbonisation are transforming infrastructure investment around the world.

Infrastructure delivery of itself is a major contributor to greenhouse gas emissions, with significant effort and innovation focused on reducing its impact and improving its sustainability.

The Government will continue to explore opportunities to respond to this challenge, meet emissions targets, and remain consistent with national regulation and international agreements.

Energy Sector

Energy sector transformation and the preparation of sectoral emission reduction roadmaps will be major drivers of demand for sustainable, low-emission infrastructure.

Major trends underway in WA's energy sector are expected to have profound implications for energy infrastructure in Western Australia in the coming years.

These include changes in the nature of electricity demand and supply in the South West Interconnected System (SWIS), North West Interconnected System (NWIS), the development of independent distributed power networks, and the potential growth in new industries like hydrogen and critical minerals.

As industry and government move towards net zero greenhouse gas emissions by 2050, demand for renewable energy supplied through the State's main electricity network, the SWIS, is expected to increase substantially.

The **SWIS Demand Assessment** supports investment in transmission infrastructure essential to enable the supply of low-emissions electricity to all SWIS users.

The **WA Government's Energy Transformation Strategy** is guiding this transition. Significant new infrastructure to generate, store and distribute renewable energy and provide grid stability and reliability will be led through these reforms.





A growing and ageing population, infrastructure planning and community resilience

Population

The state's population is forecast to increase by nearly 480,000 people (or 17%) over the decade, 2022 through 2032. This growth will be accompanied by changes to the nature and composition of our community.

All sectors will need to grow and adapt in some way in response to these demographic changes, which will have an impact on the nature of services and infrastructure required by the community.

A key factor to consider will be the ageing population, with people 65 years and over projected to comprise 38% of the population by 2027.

Migration has been a major population growth driver for the State historically, and this trend is expected to continue as the disruptive effects of the pandemic response wane.

This migration will be driven by people seeking WA's economic, employment and investment opportunities and will be key to providing a workforce that can support and enable the delivery of infrastructure over the next decade.

These impacts and net population growth will affect how infrastructure is used and delivered in future, considering the demands of economic diversity programs, sustainability initiatives and community focused infrastructure delivery.

Lands and Planning

Project ready residential land and enabling infrastructure is an ongoing requirement for Perth and regional areas. Perth is expected to see demand for around 800,000 new homes by 2050.

The WA Government's Perth and Peel @3.5 million strategy sets a target for the development of 26 dwellings per site hectare per year to effectively and efficiently keep pace with projected demand.

Given increasing competition for land as cities and regions grow, the reservation and/or acquisition of land to enable long term planning for, and delivery of, infrastructure will remain a key focus.

The WA Government is well progressed in securing long-lead and strategic land assemblies for Westport, METRONET and a number of other strategic infrastructure projects and programs across the State.

A more integrated Perth network

As Perth and Peel continue to grow, transport solutions that provide economic growth with connected business and greater access to jobs will be a key part of future infrastructure investment. Transport infrastructure investment will help to deliver easy and accessible travel and lifestyle options, create communities, and enable Perth's future growth.

The WA Government's most significant transport infrastructure investments are the METRONET suite of projects, which include 72 kilometres of new passenger rail and 23 new stations. This is the single largest investment in public transport in Perth's history.

Culture and the Arts

The WA Government will continue to support access to world-class experiences for residents and visitors to WA.

WA has a rich arts and culture asset base spread across the state, which is an important enabler of these experiences. These assets include historic and culturally significant buildings, arts facilities, and significant places that require ongoing investment over the long term.

The WA Government will continue to consider opportunities to deliver, rejuvenate, or upgrade facilities, exemplified by current and planned investment in the Perth Concert Hall, Aboriginal Cultural Centre and Perth Cultural Centre Precinct.



Sport and Recreation

Demand for regional level sporting facilities in the Perth metropolitan and major regional centres is forecast to grow with the population.

Ongoing asset and facility maintenance, upgrading and renewal of WA's extensive sporting and recreation facilities will continue to feature in planning and operational budget considerations.

This will support the ability of infrastructure to respond to the evolving needs of the community and sporting codes.

At a local level the [WA Government's Community Sporting and Recreation Facilities Fund](#) continues to be an important source of financial assistance for community groups and local governments to improve infrastructure.

Aboriginal communities

Improving water, power and housing infrastructure for remote Aboriginal communities will be an ongoing focus for the WA Government as it seeks to advance its commitment to Outcome 9 of Closing the Gap.

A key milestone has been the transfer of water and power services from the Department of Communities to licensed specialists Water Corporation and Horizon Power, facilitated through the State's \$350 million [Remote Communities Fund](#).

Housing supply and affordability

Improving access to housing will also be important over the long term, to support social and economic outcomes for the state.

The WA Government has invested a record \$2.6 billion into housing and homelessness, which will see 4,000 social housing dwellings delivered, along with refurbishments and maintenance work to many thousands more.

This has been complemented by a suite of initiatives aimed at supporting housing supply and diversity, including incentivising Build to Rent projects, low deposit home loans through the Keystart program, infrastructure incentives, and government land development projects delivered through DevelopmentWA.

Increased Australian Government engagement with housing issues will also present opportunities to improve supply and affordability through the National Housing Accord and related Commonwealth initiatives.

Infrastructure to support economic diversification

Commodity and Market diversity

Increasing global demand for WA commodities and services is anticipated to provide the engine for WA's economic diversification and growth.

Infrastructure investment will be needed to facilitate the diversification of the State's economy and, as this occurs, to respond to the demand that industry expansion, new markets and increased trade generates.

The agricultural, energy and mineral resources sectors will continue to be major contributors to the State's economy and equally significant drivers of the State's infrastructure, supply chain logistics and support industries' needs.

In addition, new technologies will spur demand for minerals that WA has in abundance including lithium, rare earths and magnesium, and nickel, that are important for electrification.

The potential for the State to become a renewable hydrogen producer and exporter of solar and wind-powered energy is also a significant opportunity over the next decade.

Manufacturing and a Value-add economy

WA's access to renewable energy sources has the potential to increase its cost competitiveness and the attractiveness for investment in energy-intensive industries. Facilitating investment in infrastructure that will enable these opportunities will be a key consideration over the next decade.

A key example of this is the State's commitment to **WA's Future Battery Industry**, which aims to grow WA's future battery industry and transform it into a significant source of economic development, diversification, jobs and skills.

WA's strengths in research and innovation will also drive demand for infrastructure to accelerate clustering and development of new ideas and products.

Financing

Demands, expectations and investment opportunities will continue to grow for WA, adopting and investing in advancing infrastructure technologies that help the State's efficiency, sustainability, and improve the quality of everyday life for the community.

The nature of these opportunities has been demonstrated by the outstanding success of the Western Australian Treasury Corporation's (WATC's) recent Sustainable Finance Program, financing Western Australia's internationally recognised environmental, social and governance (ESG) initiatives.

Facilities for new industry

WA's network of well-located industrial areas such as the Western Trade Coast in Perth and key precincts in the Pilbara, Mid-West, Goldfields, and South West will continue to play important roles in supporting the growth of key industries, as well as attracting business and investment to the state.

The ongoing supply of world class infrastructure such as digital connectivity, roads, ports, water and sewerage will enable the State to unlock, connect and underpin supply chains through land access and infrastructure, enabling opportunities to access international markets.

Establishing high-tech industry hubs will also be important to stimulate business clusters and innovation. The WA Government is currently progressing the **Global Advanced Industry Hub** in Kwinana and **renewable hydrogen hubs** in the Mid-West, Perth and Pilbara regions to accelerate economic diversification.

Skills and Training

The WA Government is committed to investment over the long term in infrastructure to support growing demand for education and training across the state. Growth and diversification of WA's economy into new industries such as low emission energy and defence will create jobs requiring new knowledge and skills.

Investment in modern facilities will be important to provide students with the right environment to learn how to apply their creativity and to develop, use and engage with the latest technologies before entering the workplace.

As WA's population continues to grow, so too will the demand for public education infrastructure. The Department of Education is already **committing substantial investment** in response to current student growth and industry needs. Further investment in the education sector will be a key consideration over the medium and longer term.

WA Government initiatives to address trade related skills shortages have been highly successful at promoting apprenticeship opportunities and uptake with record numbers of apprentices employed. This focus is complemented by substantial ongoing investment in TAFE colleges and related administrative infrastructure, to ensure that increased demand can be accommodated.



Technological innovation

Technologies such as digitisation, deep learning and automation will continue to drive transformation across WA's manufacturing, infrastructure and services sectors over the next ten years and beyond.

Community expectation for digital delivery of services and information will continue to expand, along with the threat of cybercrime. Cyber security will continue to be important to protect digital infrastructure systems and maintain community support for their expanded use. This will require a greater focus on risk mitigation and protection needs, with oversight from the Office of Digital Government.

Digital health technology

Expansion of digital infrastructure will continue to be important in delivering an innovative, person-centred health care system. Digital technology provides a platform to allow medical information to move around health systems with the patient.

The WA Government is already investing in Electronic Medical Records to provide a foundation for health system reforms. With 25% of the state's population living in regional areas, continuing to improve digital technology services such as telehealth and remote monitoring will go a long way in helping improve the accessibility and effectiveness of regional health services.

Renewable hydrogen as core industry builder

Research and development facilities will enable WA to secure a lead role in hydrogen innovation and technology to support energy transformation.

The [Western Australian Renewable Hydrogen Strategy and Roadmap](#) will support the establishment of the industry, complemented by cooperation between universities and government to drive collaboration and develop new ideas, technologies, local entrepreneurial ingenuity and capital.

The Government has invested in the creation of a Clean Energy Training and Research Institute as a component of the Pilbara Hydrogen Hub, to help development and diversification of industries in the region.

Advanced critical minerals processing

Significant infrastructure will be required to realise opportunities along the critical minerals value chain. These include extraction and processing of minerals, design and manufacture of processing infrastructure and technologies, and downstream application and technologies that value-add to critical minerals mined in WA.

The [WA Government's 2023 investment in geoscience to support critical minerals exploration](#) will assist in accelerating potential mineral discovery and diversifying the State's mineral reserve through data acquisition, an exploration incentive scheme, and funding for data analytic packages.

This initiative demonstrates the importance to WA of the transition to clean energy and critical mineral supply chains, with the program forming the basis of long-run mineral province development and access to ore industry profiles typical in mineral project development.

WA's existing network of well-located strategic and general industrial areas provides many locations to support processing and manufacturing opportunities associated with critical minerals.

The planned delivery of infrastructure across the next decade, designed to meet the requirements of business and community through sustainable, low emission and minimal impact technologies will be key in the development of economic diversification and Western Australia's exciting future opportunities.





FIND OUT MORE

The following WA Government agencies can also provide more information on infrastructure planning, investment and opportunities and to help navigate WA's infrastructure landscape.

WA Government

Department of the Premier and Cabinet

- » Leads the public sector and supports the Premier and Cabinet.

Department of Jobs, Tourism, Science and Innovation

- » Leads economic development, international trade and investment.
- » Overseas offices – UK, China, India, Indonesia, Japan, Gulf, Singapore and South Korea
- » Responsible for leading Strategic Industrial Areas across the state

Department of Finance

- » Constructs and maintains government buildings, manages projects and leads procurement.

Department of Planning, Lands and Heritage

- » Responsible for state level land use planning, management and heritage.

Department of Primary Industries and Regional Development

- » Develops and protects Western Australia's agriculture and food sector and aquatic resources and builds vibrant regions with strong economies.

Department of Transport

- » DoT integrates and enhances coordination of the State's transport operations, regulatory functions, and planning and policy development processes. The Transport portfolio includes Main Roads WA, Public Transport Authority, Westport, METRONET, Office of Major Transport Infrastructure Delivery, Portfolio Strategic Projects Office and the Port Authorities.

Energy Policy WA (Department of Mines, Industry Regulation and Safety)

- » Providing policy advice to government to facilitate the delivery of secure, reliable, sustainable and affordable energy services to Western Australians.

Department of Water and Environmental Regulation

- » Managing and regulating the state's environment and water resources.

Department of Health

- » WA's public health system ensures that Western Australians receive safe, high quality and accessible health care, no matter where they live.

Mental Health Commission

- » The Commission has a mandate to lead mental health reform throughout the State and work towards a modern effective mental health system.

Department of Communities

- » The Department provides services and partner with others to keep children safe; deliver social and public housing; deliver vital community services, including in emergencies; address homelessness; prevent family and domestic violence; provide stewardship for disability services; and drive the agenda for women's interests, youth, seniors and ageing, carers and volunteering.

Department of Local Government, Sport and Cultural Industries

- » Engages and collaborates with stakeholders, community organisations, peak bodies and government to achieve a vibrant, inclusive and connected WA community.

Department of Biodiversity, Conservation and Attractions

- » Promoting biodiversity and conservation through sustainable management of WA's species, ecosystems, lands and the attractions.

Department of Fire and Emergency Services

- » Supporting the WA community to prepare for disasters and working with the community in protection and resilience against natural hazards and emergency incidents.

Department of Justice

- » Supports the community, Western Australian Government, judiciary and Parliament through the provision of access to high quality justice, legal and corrective services.

Western Australian Police Force

- » The Western Australia Police Force polices the world's largest single police jurisdiction, covering Western Australia's 2.5 million square kilometres with over 150 police stations.

DevelopmentWA

- » The central development agency and responsible for managing State Industrial Areas.

Western Australian Planning Commission

- » WAPC is a board that has state-wide responsibility for urban, rural and regional integrated strategic and statutory land use planning and land development.

Infrastructure WA

- » Provides advice and assistance to the WA Government on infrastructure matters.

Department of Treasury

- » The central department managing Western Australia's public sector finances and formulating and implementing the annual State Budget.





Tendering, Industry and Market-led Proposal information Western Australia

Tendering

Tenders WA

- » The central source of information on WA public sector requests for tender and awarded contracts. WA Government departments and agencies use this website to advertise their public requests and early tender advice, as well as publish awarded contracts.

Industry link

WA Industry Link

- » The WA Government purchases a variety of goods, services, works and community services from business each year. Industry Link is a high-level summary of anticipated upcoming procurements to assist industry to identify opportunities.

Market-led Proposals

Market-led Proposals

- » Provide an innovative opportunity for Government and the private sector to work together, create jobs and stimulate the economy in Western Australia.



APPENDIX 1

Overview of State Budget infrastructure commitments 2023-24 to 2026-27, \$20 million and above

Table 1.

Significant economic development infrastructure investments 2023-24 to 2026-27, Year 1-4. Reporting \$20 million and above.¹

| Economic Development and Jobs | | | | |
|--|---|---------|----------------------|-----------------------|
| Project name | Responsible organisation | Region | Estimated Total Cost | Entire Project Period |
| New Metropolitan Facility | Primary Industries and Regional Development | Perth | 320 | 2021-22 to 2026-27 |
| Gold Corporation Plant and Equipment Replacement Program | Gold Corporation | Perth | 131 | 2012-13 to 2026-27 |
| Pilbara Hydrogen Hub | Primary Industries and Regional Development | Pilbara | 64 | 2022-23 to 2025-26 |

| Transport | | | | |
|---|--------------------------|------------|----------------------|-----------------------|
| Project name | Responsible organisation | Region | Estimated Total Cost | Entire Project Period |
| Maritime - Transforming Bunbury's Waterfront Stage Three | Transport | South West | 78 | 2021-22 to 2025-26 |
| Maritime - Broome Boating Facility - Election Commitments | Transport | Kimberley | 36 | 2023-24 to 2025-26 |

.....
¹ Figures in this document have been rounded to the nearest \$ million.

| Transport | | | | |
|---|----------------------------|--------------|----------------------|-----------------------|
| Project name | Responsible organisation | Region | Estimated Total Cost | Entire Project Period |
| Tonkin Highway Corridor Upgrades - Tonkin Highway Gap; Grade Separations at Hale, Welshpool and Kelvin Roads; and Stage Three Extension | Commissioner of Main Roads | State-wide | 1,882 | 2017-18 to 2026-27 |
| Bunbury Outer Ring Road - Election Commitments | Commissioner of Main Roads | South West | 1,352 | 2017-18 to 2025-26 |
| Reseal Program - Capitalisation of Reseal Program | Commissioner of Main Roads | State-wide | 928 | 2015-16 to 2026-27 |
| Regional Road Safety Program - Road Safety Program | Commissioner of Main Roads | Regional-all | 883 | 2020-21 to 2024-25 |
| Safer Roads and Bridges Program - Safer Roads and Bridges Program | Commissioner of Main Roads | State-wide | 555 | 2008-09 to 2026-27 |
| Karratha to Tom Price - Manuwarra Red Dog Highway - Election Commitments | Commissioner of Main Roads | Pilbara | 380 | 2017-18 to 2025-26 |
| Thomas Road - Southwestern Highway to Tonkin Highway Dual Carriageway | Commissioner of Main Roads | Peel | 290 | 2021-22 to 2026-27 |

| Transport | | | | |
|--|----------------------------|----------------|----------------------|-----------------------|
| Project name | Responsible organisation | Region | Estimated Total Cost | Entire Project Period |
| Queen Victoria Street - Swan River Crossings (Fremantle Road and Rail Bridge) - Construct New Bridge | Commissioner of Main Roads | Perth | 280 | 2019-20 to 2026-27 |
| Great Northern Highway - Bindoon Bypass - Construct New Alignment | Commissioner of Main Roads | Wheatbelt | 275 | 2020-21 to 2026-27 |
| Great Eastern Highway - Coates Gully, Walgoolan to Southern Cross and Ghooli to Benari | Commissioner of Main Roads | Wheatbelt | 250 | 2020-21 to 2026-27 |
| Pinjarra Heavy Haulage Deviation - Pinjarra Heavy Haulage Deviation - Stage One and Stage Two | Commissioner of Main Roads | Peel | 250 | 2017-18 to 2026-27 |
| Road Safety Commission - Regional Road Safety Improvements | Commissioner of Main Roads | Regional-all | 229 | 2013-14 to 2026-27 |
| Reid Highway - Altone Road and Daviot Road/Drumpellier Drive Grade Separations | Commissioner of Main Roads | Perth | 225 | 2021-22 to 2026-27 |
| Albany Highway - Albany Ring Road - Election Commitments | Commissioner of Main Roads | Great Southern | 215 | 2017-18 to 2023-24 |

| Transport | | | | |
|--|----------------------------|-----------|----------------------|-----------------------|
| Project name | Responsible organisation | Region | Estimated Total Cost | Entire Project Period |
| Roe Highway - Great Eastern Highway Bypass Including Abernethy Road | Commissioner of Main Roads | Perth | 206 | 2017-18 to 2025-26 |
| Reid Highway - West Swan and Reid Highway Interchange | Commissioner of Main Roads | Perth | 175 | 2020-21 to 2026-27 |
| Department of Transport - Principal Shared Path Program | Commissioner of Main Roads | Perth | 162 | 2014-15 to 2026-27 |
| Mitchell Freeway - Stephenson Avenue | Commissioner of Main Roads | Perth | 155 | 2020-21 to 2024-25 |
| Great Eastern Highway - Coates Gully Bridges Walgoolan to Southern Cross | Commissioner of Main Roads | Wheatbelt | 41 | 2021-22 to 2023-24 |
| Albany Highway - Kelmscott to Williams Pavement Rehabilitation and Hotham River Bridge Replacement | Commissioner of Main Roads | Wheatbelt | 31 | 2020-21 to 2023-24 |
| Thomas Road - Nicholson Road Oakford - Intersection Upgrade | Commissioner of Main Roads | Peel | 31 | 2017-18 to 2023-24 |
| Broome Cape-Leveque and Community Access Roads Upgrades | Commissioner of Main Roads | Kimberley | 26 | 2021-22 to 2023-24 |
| Burrup Road - Perdaman Project | Commissioner of Main Roads | Pilbara | 25 | 2021-22 to 2023-24 |

| Transport | | | | |
|---|----------------------------|--------------|----------------------|-----------------------|
| Project name | Responsible organisation | Region | Estimated Total Cost | Entire Project Period |
| Regional Road Safety Program - Regional Black Spot Program - Election Commitments | Commissioner of Main Roads | Regional-all | 23 | 2021-22 to 2023-24 |
| Heavy Vehicle Safety and Productivity Program - Commonwealth | Commissioner of Main Roads | State-wide | 22 | 2020-21 to 2024-25 |
| Gibb River Road - Derby - Gibb River - Wyndham Improve Formation and Gravel | Commissioner of Main Roads | Kimberley | 142 | 2012-13 to 2026-27 |
| Smart Freeways - Hodges Drive to Hepburn Avenue Widening Southbound | Commissioner of Main Roads | Perth | 141 | 2016-17 to 2023-24 |
| Smart Freeways - Transforming Freeways - Mitchell Freeway Corridor | Commissioner of Main Roads | Perth | 140 | 2020-21 to 2023-24 |
| Great Northern Highway - Marble Bar Road Upgrade | Commissioner of Main Roads | Pilbara | 120 | 2021-22 to 2025-26 |
| Bussell Highway - Bussell Highway Duplication Stage One and Stage Two | Commissioner of Main Roads | South West | 115 | 2020-21 to 2024-25 |
| Northern Australia Roads and Beef Roads Programs - Great Northern Highway - Ord River | Commissioner of Main Roads | Kimberley | 113 | 2016-17 to 2024-25 |

| Transport | | | | |
|--|----------------------------|------------|----------------------|-----------------------|
| Project name | Responsible organisation | Region | Estimated Total Cost | Entire Project Period |
| Road Safety Commission - Metropolitan Intersections Crash Program | Commissioner of Main Roads | Perth | 111 | 2013-14 to 2025-26 |
| Old Coast Road - Mandurah Estuary Bridge Duplication - Election Commitments | Commissioner of Main Roads | Peel | 110 | 2021-22 to 2024-25 |
| Thomas and Anketell Roads Freight Upgrade - Stages One and Two Planning | Commissioner of Main Roads | Peel | 105 | 2020-21 to 2024-25 |
| Department of Transport - Principal Shared Path Causeway Cyclist and Pedestrian Bridge | Commissioner of Main Roads | Perth | 100 | 2020-21 to 2024-25 |
| Tonkin Highway Corridor Upgrades - North Ellenbrook Interchange | Commissioner of Main Roads | Perth | 100 | 2022-23 to 2026-27 |
| Capitalised Operational Costs - 2023-24 Program | Commissioner of Main Roads | State-wide | 89 | 2023-24 |
| Capitalised Operational Costs - 2024-25 Program | Commissioner of Main Roads | State-wide | 90 | 2024-25 |
| Capitalised Operational Costs - 2025-26 Program | Commissioner of Main Roads | State-wide | 90 | 2025-26 |
| Capitalised Operational Costs - 2026-27 Program | Commissioner of Main Roads | State-wide | 90 | 2026-27 |

| Transport | | | | |
|--|----------------------------|------------|----------------------|-----------------------|
| Project name | Responsible organisation | Region | Estimated Total Cost | Entire Project Period |
| Nicholson Road and Garden Street Grade Separation Planning and Construction | Commissioner of Main Roads | Perth | 80 | 2022-23 to 2026-27 |
| Toodyay Road - Dryandra to Toodyay | Commissioner of Main Roads | Wheatbelt | 80 | 2021-22 to 2026-27 |
| Great Northern Highway - Port Hedland Airport Deviation | Commissioner of Main Roads | Pilbara | 76 | 2020-21 to 2023-24 |
| Road Safety Commission - LED School Zone Lights | Commissioner of Main Roads | Perth | 74 | 2011-12 to 2026-27 |
| Thomas Road - METRONET - Byford Rail Extension - Thomas Road Bridge | Commissioner of Main Roads | Peel | 69 | 2020-21 to 2023-24 |
| Great Northern Highway - Nellie Springs to Sally Downs Well and Arthur Creek | Commissioner of Main Roads | Kimberley | 60 | 2021-22 to 2026-27 |
| Indian Ocean Drive - Indian Ocean Drive - Jurien Bay to Brand Highway | Commissioner of Main Roads | Mid West | 55 | 2021-22 to 2024-25 |
| Freight Vehicle Productivity Improvements Program | Commissioner of Main Roads | State-wide | 50 | 2020-21 to 2025-26 |
| Great Northern Highway - Newman to Port Hedland Overtaking Lanes | Commissioner of Main Roads | Pilbara | 50 | 2021-2 to 2026-27 |

| Transport | | | | |
|---|----------------------------|----------------|----------------------|-----------------------|
| Project name | Responsible organisation | Region | Estimated Total Cost | Entire Project Period |
| Thomas Road - Kwinana Freeway to Nicholson Road Upgrade | Commissioner of Main Roads | Peel | 43 | 2020-21 to 2023-24 |
| East Perth Power Station Footbridge | Commissioner of Main Roads | Perth | 39 | 2022-23 to 2024-25 |
| Menang Drive and Chester Pass Road - Grade Separation | Commissioner of Main Roads | Great Southern | 37 | 2023-24 to 2024-25 |
| Great Northern Highway - Newman to Katherine Corridor - Broome to Kununurra Upgrade Stage One | Commissioner of Main Roads | Kimberley | 36 | 2017-18 to 2024-25 |
| Wanneroo Road - Wanneroo Road Duplication - Dunstan Road to Romeo Road | Commissioner of Main Roads | Perth | 35 | 2021-22 to 2024-25 |
| Rail Crossing Program - Rail Crossing Program | Commissioner of Main Roads | State-wide | 35 | 2020-21 to 2026-27 |
| Buildings and Equipment - 2023-24 Program | Commissioner of Main Roads | State-wide | 28 | 2023-24 |
| Buildings and Equipment - 2024-25 Program | Commissioner of Main Roads | State-wide | 30 | 2024-25 |
| Buildings and Equipment - 2025-26 Program | Commissioner of Main Roads | State-wide | 22 | 2025-26 |
| Buildings and Equipment - 2026-27 Program | Commissioner of Main Roads | State-wide | 31 | 2026-27 |

| Transport | | | | |
|---|----------------------------|------------|----------------------|-----------------------|
| Project name | Responsible organisation | Region | Estimated Total Cost | Entire Project Period |
| Perth Airport Precinct - Northern Access | Commissioner of Main Roads | Perth | 29 | 2021-22 to 2026-27 |
| Minor Works (includes Black Spot and Urgent Minor Works) - 2023-24 Program | Commissioner of Main Roads | State-wide | 25 | 2023-24 |
| Minor Works (includes Black Spot and Urgent Minor Works) - 2025-26 Program | Commissioner of Main Roads | State-wide | 27 | 2025-26 |
| Minor Works (includes Black Spot and Urgent Minor Works) - 2026-27 Program | Commissioner of Main Roads | State-wide | 27 | 2026-27 |
| Outer Harbour - Kwinana Bulk Terminal - Material Handling Infrastructure Renewal of Import System | Fremantle Port Authority | Perth | 56 | 2020-21 to 2023-24 |
| Inner Harbour Infrastructure Refurbishment Program | Fremantle Port Authority | Perth | 36 | 2022-23 to 2026-27 |
| Outer Harbour - Kwinana Bulk Terminal - Infrastructure, Equipment Replacement and Upgrade | Fremantle Port Authority | Perth | 36 | 2010-11 to 2025-26 |
| North Quay - Land Acquisitions | Fremantle Port Authority | Perth | 22 | 2013-14 to 2023-24 |

| Transport | | | | |
|---|---------------------------|-----------|----------------------|-----------------------|
| Project name | Responsible organisation | Region | Estimated Total Cost | Entire Project Period |
| Major Port Infrastructure - Supply Base | Kimberley Ports Authority | Kimberley | 45 | 2022-23 to 2024-25 |
| Port Maximisation Project | Mid West Ports Authority | Mid West | 350 | 2021-22 to 2025-26 |
| Dampier Cargo Wharf Extension | Pilbara Ports Authority | Pilbara | 195 | 2023-24 to 2026-27 |
| Port of Port Hedland - Hedland Maritime Initiative | Pilbara Ports Authority | Pilbara | 175 | 2020-21 to 2023-24 |
| Port of Port Hedland - Election Commitment - Spoilbank Marina | Pilbara Ports Authority | Pilbara | 160 | 2017-18 to 2023-24 |
| Port of Port Hedland - Lumsden Point General Cargo Facility and Logistics Hub | Pilbara Ports Authority | Pilbara | 129 | 2022-23 to 2024-25 |
| Port of Port Hedland - Tug Haven Revetment Wall Upgrades | Pilbara Ports Authority | Pilbara | 73 | 2020-21 to 2023-24 |
| Port of Ashburton - Port Infrastructure Construction Project | Pilbara Ports Authority | Pilbara | 32 | 2013-14 to 2025-26 |
| Minor Works - 2024-25 Program | Pilbara Ports Authority | Pilbara | 20 | 2024-25 |
| Minor Works - 2025-26 Program | Pilbara Ports Authority | Pilbara | 20 | 2025-26 |
| Minor Works - 2026-27 Program | Pilbara Ports Authority | Pilbara | 20 | 2026-27 |

| Transport | | | | |
|--|---|------------|----------------------|-----------------------|
| Project name | Responsible organisation | Region | Estimated Total Cost | Entire Project Period |
| Port of Bunbury - Inner Harbour Access Bridge | Southern Ports Authority | South West | 21 | 2020-21 to 2024-25 |
| METRONET - Forrestfield-Airport Link | Public Transport Authority of Western Australia | Perth | 1,841 | 2013-14 to 2023-24 |
| METRONET - Morley-Ellenbrook Line | Public Transport Authority of Western Australia | Perth | 1,651 | 2020-21 to 2024-25 |
| METRONET - Thornlie-Cockburn Link | Public Transport Authority of Western Australia | Perth | 1,124 | 2017-18 to 2024-25 |
| METRONET - Level Crossing Removal - Victoria Park - Canning (Inner Armadale) | Public Transport Authority of Western Australia | Perth | 1,047 | 2020-21 to 2024-25 |
| METRONET - Yanchep Rail Extension | Public Transport Authority of Western Australia | Perth | 982 | 2017-18 to 2023-24 |
| METRONET - Railcar Replacement | Public Transport Authority of Western Australia | State-wide | 872 | 2018-19 to 2026-27 |
| METRONET - Byford Rail Extension | Public Transport Authority of Western Australia | Peel | 797 | 2021-22 to 2024-25 |
| Bus Replacement Program - New Bus Replacement Program in Progress | Public Transport Authority of Western Australia | State-wide | 614 | 2019-20 to 2026-27 |
| METRONET - High Capacity Signalling Program of Works | Public Transport Authority of Western Australia | State-wide | 577 | 2019-20 to 2026-27 |

| Transport | | | | |
|--|---|------------|----------------------|-----------------------|
| Project name | Responsible organisation | Region | Estimated Total Cost | Entire Project Period |
| Rail Infrastructure Program - Rail Infrastructure in Progress | Public Transport Authority of Western Australia | State-wide | 573 | 2007-08 to 2025-26 |
| METRONET - Railcar Acquisition | Public Transport Authority of Western Australia | State-wide | 461 | 2017-18 to 2026-27 |
| Rail Infrastructure Program - Rail Infrastructure | Public Transport Authority of Western Australia | State-wide | 459 | 2023-24 to 2026-27 |
| METRONET - Bayswater Station (Forrestfield-Airport Link Services and Morley-Ellenbrook Line Forward Works) | Public Transport Authority of Western Australia | Perth | 335 | 2018-19 to 2024-25 |
| Bus Infrastructure Program - Electric Buses (E Buses) and Depot Modifications | Public Transport Authority of Western Australia | Perth | 250 | 2023-24 to 2026-27 |
| METRONET - New Midland Station | Public Transport Authority of Western Australia | Perth | 240 | 2021-22 to 2025-26 |
| METRONET - Canning Bridge Bus Interchange | Public Transport Authority of Western Australia | Perth | 202 | 2020-21 to 2026-27 |
| Freight Program - Western Australian Agricultural Supply Chain Improvements | Public Transport Authority of Western Australia | Wheatbelt | 177 | 2022-23 to 2025-26 |

| Transport | | | | |
|--|---|------------|----------------------|-----------------------|
| Project name | Responsible organisation | Region | Estimated Total Cost | Entire Project Period |
| METRONET - Level Crossing Removal Program | Public Transport Authority of Western Australia | Perth | 134 | 2017-18 to 2023-24 |
| Major Projects - Stirling Bus Interchange | Public Transport Authority of Western Australia | Perth | 90 | 2021-22 to 2023-24 |
| METRONET - New Stations and Existing Stations Upgrades | Public Transport Authority of Western Australia | Perth | 82 | 2017-18 to 2024-25 |
| METRONET - Lakelands Station | Public Transport Authority of Western Australia | Peel | 72 | 2018-19 to 2023-24 |
| Operational Business Support Systems Program - Business Support Upgrades in Progress | Public Transport Authority of Western Australia | State-wide | 65 | 2017-18 to 2025-26 |
| Rail Infrastructure Program - Resilience Package | Public Transport Authority of Western Australia | State-wide | 60 | 2013-14 to 2023-24 |
| Bus Infrastructure Program - Smartrider System Asset Replacement and Technology Update | Public Transport Authority of Western Australia | State-wide | 58 | 2017-18 to 2023-24 |
| Rail Infrastructure Program - Kwinana and Mitchell Freeway Barrier Upgrades | Public Transport Authority of Western Australia | Perth | 57 | 2020-21 to 2023-24 |
| Railcar Program - Rail Futures Fund (Australind Railcar Replacement) | Public Transport Authority of Western Australia | State-wide | 55 | 2017-18 to 2025-26 |

| Transport | | | | |
|--|---|--------------|----------------------|-----------------------|
| Project name | Responsible organisation | Region | Estimated Total Cost | Entire Project Period |
| METRONET - Greenwood Station Multi-Storey Car Park | Public Transport Authority of Western Australia | Perth | 38 | 2021-22 to 2024-25 |
| METRONET - New Midland Station Multi-Storey Car Park | Public Transport Authority of Western Australia | Perth | 36 | 2022-23 to 2023-24 |
| Freight Program - Grain Freight Upgrades | Public Transport Authority of Western Australia | Regional-all | 22 | 2022-23 to 2023-24 |

| Energy ¹ | | | | |
|-----------------------------------|--------------------------|------------|----------------------|-----------------------|
| Project name | Responsible organisation | Region | Estimated Total Cost | Entire Project Period |
| Service – Energy Infrastructure | Water Corporation | State-wide | 322 | 2022-23 to 2024-25 |
| Generation – Muja Power Station | Synergy | South West | 180 | 2013-14 to 2026-27 |
| Generation – Cockburn Gas Turbine | Synergy | Perth | 95 | 2013-14 to 2026-27 |
| Generation – Collie Power Station | Synergy | South West | 92 | 2013-14 to 2026-27 |
| Generation – Pinjar Gas Turbine | Synergy | Perth | 87 | 2013-14 to 2026-27 |

.....

Note - Energy

1 Western Power is not contained in Appendix 1 as its expenditure is program-based, with these programs being recurrent and ongoing. The names of these significant programs (as set out in Western Power’s AIP on page 791 of 2023-24 Budget Paper 2) detailing:

- Relocation and Augmentation of Network Assets - \$82 million
- Growth – Distribution - \$570 million
- Growth – Transmission - \$225 million
- Other Asset Investment – Motor Vehicle Fleet and Mobile Plant - \$97 million
- Infrastructure Safety - \$1.6 billion
- Service - \$1.7 billion

Horizon Power as also not contained in Appendix 1. Programs and ongoing expenditure which may not meet the expenditure threshold listed here address standalone power systems, energy storage in the regions and network risk management upgrades. Other priorities include EV charging infrastructure network, network integrated solar connections

| Water | | | | |
|--|--------------------------|------------|----------------------|-----------------------|
| Project name | Responsible organisation | Region | Estimated Total Cost | Entire Project Period |
| Remote Aboriginal Communities Accelerated Works | Water Corporation | Kimberley | 63 | 2021-22 to 2026-27 |
| Election Commitment - Essential and Municipal Services Upgrade Program | Water Corporation | Kimberley | 61 | 2019-20 to 2025-26 |
| Metropolitan - Drainage - Capacity | Water Corporation | State-wide | 69 | 2018-19 to 2026-27 |
| Metropolitan - Drainage - Renewals | Water Corporation | State-wide | 30 | 2018-19 to 2026-27 |
| Metropolitan - Wastewater - Network Capacity | Water Corporation | State-wide | 506 | 2018-19 to 2026-27 |
| Metropolitan - Wastewater - Network Renewals | Water Corporation | State-wide | 184 | 2018-19 to 2026-27 |
| Metropolitan - Wastewater - Treatment Capacity | Water Corporation | State-wide | 658 | 2018-19 to 2026-27 |
| Metropolitan - Wastewater - Treatment Renewals | Water Corporation | State-wide | 146 | 2018-19 to 2026-27 |
| Metropolitan - Water - Network Capacity | Water Corporation | State-wide | 364 | 2018-19 to 2026-27 |
| Metropolitan - Water - Network Renewals | Water Corporation | State-wide | 323 | 2018-19 to 2026-27 |
| Metropolitan - Water - Supply Capacity | Water Corporation | State-wide | 520 | 2018-19 to 2026-27 |

| Water | | | | |
|--|--------------------------|------------|----------------------|-----------------------|
| Project name | Responsible organisation | Region | Estimated Total Cost | Entire Project Period |
| Metropolitan - Water - Supply Renewals | Water Corporation | State-wide | 217 | 2018-19 to 2026-27 |
| Regional - Drainage - Capacity | Water Corporation | State-wide | 37 | 2018-19 to 2026-27 |
| Regional - Drainage - Renewals | Water Corporation | State-wide | 39 | 2018-19 to 2026-27 |
| Regional - Irrigation | Water Corporation | State-wide | 167 | 2018-19 to 2026-27 |
| Regional - Wastewater - Network Capacity | Water Corporation | State-wide | 92 | 2018-19 to 2026-27 |
| Regional - Wastewater - Network Renewals | Water Corporation | State-wide | 100 | 2018-19 to 2026-27 |
| Regional - Wastewater - Treatment Capacity | Water Corporation | State-wide | 209 | 2018-19 to 2026-27 |
| Regional - Wastewater - Treatment Renewals | Water Corporation | State-wide | 61 | 2018-19 to 2026-27 |
| Regional - Water - Network Capacity | Water Corporation | State-wide | 243 | 2018-19 to 2026-27 |
| Regional - Water - Network Renewals | Water Corporation | State-wide | 500 | 2018-19 to 2026-27 |
| Regional - Water - Supply Capacity | Water Corporation | State-wide | 542 | 2018-19 to 2026-27 |
| Regional - Water - Supply Renewals | Water Corporation | State-wide | 59 | 2018-19 to 2026-27 |

| Water | | | | |
|---|------------------------------------|------------|----------------------|-----------------------|
| Project name | Responsible organisation | Region | Estimated Total Cost | Entire Project Period |
| Relocation and Augmentation of Network Assets | Water Corporation | Perth | 132 | 2021-22 to 2026-27 |
| Service - Business Support Costs | Water Corporation | State-wide | 426 | 2018-19 to 2026-27 |
| Service - Capital Support Costs | Water Corporation | State-wide | 256 | 2018-19 to 2026-27 |
| Service - Corporate Real Estate | Water Corporation | State-wide | 180 | 2018-19 to 2026-27 |
| Service - Energy Infrastructure | Water Corporation | State-wide | 322 | 2022-23 to 2024-25 |
| Service - Operational Information and Control | Water Corporation | State-wide | 236 | 2018-19 to 2026-27 |
| Water Resource Recovery Scheme | Bunbury Water Corporation | South West | 30 | 2020-21 to 2024-25 |
| State Groundwater Investigation Program | Water and Environmental Regulation | State-wide | 31 | 2019-20 to 2026-27 |
| Replace and Maintain Monitoring Bores | Water and Environmental Regulation | State-wide | 29 | 2019-20 to 2026-27 |
| Environment Online | Water and Environmental Regulation | State-wide | 27 | 2020-21 to 2024-25 |

| Health and Mental Health | | | | |
|---|--------------------------|------------|----------------------|-----------------------|
| Project name | Responsible organisation | Region | Estimated Total Cost | Entire Project Period |
| Hospitals, Health Centres and Community Facilities - New Women and Babies Hospital Project | WA Health | Perth | 1,787 | 2022-23 to 2026-27 |
| Equipment - Medical Equipment and Imaging Replacement Program | WA Health | State-wide | 634 | 2014-15 to 2024-25 |
| Hospitals, Health Centres and Community Facilities - Bunbury Hospital Redevelopment - Election Commitments | WA Health | South West | 278 | 2019-20 to 2026-27 |
| Hospitals, Health Centres and Community Facilities - Joondalup Health Campus Development Stage 2 - Election Commitments | WA Health | Perth | 267 | 2017-18 to 2024-25 |
| Information and Communication Equipment and Infrastructure - Human Resource Management Information System | WA Health | State-wide | 225 | 2020-21 to 2024-25 |
| Hospitals, Health Centres and Community Facilities - Graylands Reconfiguration and Forensics Project | WA Health | Perth | 219 | 2023-24 to 2026-27 |

| Health and Mental Health | | | | |
|--|--------------------------|------------|----------------------|-----------------------|
| Project name | Responsible organisation | Region | Estimated Total Cost | Entire Project Period |
| Hospitals, Health Centres and Community Facilities - Minor Buildings Works Program | WA Health | State-wide | 178 | 2004-05 to 2026-27 |
| Hospitals, Health Centres and Community Facilities - Bentley Health Service - Surgicentre | WA Health | Perth | 150 | 2023-24 to 2026-27 |
| Hospitals, Health Centres and Community Facilities - Peel Health Campus - Redevelopment | WA Health | Peel | 150 | 2022-23 to 2026-27 |
| Hospitals, Health Centres and Community Facilities - Modularity - 4 x 30-Bed Ward Units | WA Health | State-wide | 146 | 2021-22 to 2023-24 |
| Hospitals, Health Centres and Community Facilities - Hedland Regional Resource Centre Stage 2 | WA Health | Pilbara | 136 | 2014-15 to 2023-24 |
| Information and Communication Equipment and Infrastructure - Electronic Medical Record Program | WA Health | State-wide | 136 | 2022-23 to 2024-25 |

| Health and Mental Health | | | | |
|---|--------------------------|----------------------|----------------------|-----------------------|
| Project name | Responsible organisation | Region | Estimated Total Cost | Entire Project Period |
| Hospitals, Health Centres and Community Facilities - Geraldton Health Campus Redevelopment - Election Commitments | WA Health | Mid West | 123 | 2017-18 to 2026-27 |
| Hospitals, Health Centres and Community Facilities - Busselton Health Campus | WA Health | South West | 115 | 2006-07 to 2024-25 |
| Hospitals, Health Centres and Community Facilities - St John of God Midland - Public Hospital Expansion | WA Health | Perth | 81 | 2026-27 |
| Hospitals, Health Centres and Community Facilities - Newman Health Service Redevelopment Project | WA Health | Pilbara | 62 | 2015-16 to 2023-24 |
| Hospitals, Health Centres and Community Facilities - Kalgoorlie Regional Resource Centre Redevelopment Stage 1 | WA Health | Goldfields Esperance | 57 | 2014-15 to 2023-24 |
| Hospitals, Health Centres and Community Facilities - Meekatharra Hospital - Election Commitments | WA Health | Mid West | 49 | 2021-22 to 2025-26 |

| Health and Mental Health | | | | |
|--|--------------------------|--------------|----------------------|-----------------------|
| Project name | Responsible organisation | Region | Estimated Total Cost | Entire Project Period |
| Hospitals, Health Centres and Community Facilities - Fremantle Mental Health Beds - Election Commitments | WA Health | Perth | 47 | 2020-21 to 2025-26 |
| Hospitals, Health Centres and Community Facilities - Renal Dialysis and Support Services | WA Health | Regional-all | 44 | 2013-14 to 2024-25 |
| Hospitals, Health Centres and Community Facilities - Byford Health Hub - Election Commitments | WA Health | Peel | 41 | 2022-23 to to 2026-27 |
| Information and Communication Equipment and Infrastructure - Replacement of Medical Imaging System Picture Archiving and Communication System - Radiology Information System | WA Health | State-wide | 39 | 2016-17 to 2023-24 |
| Information and Communication Equipment and Infrastructure - Fiona Stanley Hospital - ICT Capital Replacement | WA Health | Perth | 37 | 2018-19 to 2025-26 |

| Health and Mental Health | | | | |
|---|--------------------------|----------------------|----------------------|-----------------------|
| Project name | Responsible organisation | Region | Estimated Total Cost | Entire Project Period |
| Hospitals, Health Centres and Community Facilities - Sarich Neuroscience Research Institute Centre | WA Health | Perth | 35 | 2015-16 to 2025-26 |
| Hospitals, Health Centres and Community Facilities - King Edward Memorial Hospital Critical Infrastructure | WA Health | Perth | 34 | 2019-20 to 2024-25 |
| Hospitals, Health Centres and Community Facilities - Sir Charles Gairdner Hospital - GMP Laboratories and Cyclotron | WA Health | Perth | 34 | 2019-20 to 2025-26 |
| Hospitals, Health Centres and Community Facilities - Tom Price Hospital Redevelopment | WA Health | Pilbara | 33 | 2017-18 to 2024-25 |
| Hospitals, Health Centres and Community Facilities - Primary Health Centres Demonstration Program | WA Health | Regional-all | 32 | 2013-14 to 2025-26 |
| Hospitals, Health Centres and Community Facilities - Esperance Health Campus Redevelopment | WA Health | Goldfields Esperance | 32 | 2008-09 to 2023-24 |

| Health and Mental Health | | | | |
|---|--------------------------|----------------------|----------------------|-----------------------|
| Project name | Responsible organisation | Region | Estimated Total Cost | Entire Project Period |
| Hospitals, Health Centres and Community Facilities - Sir Charles Gairdner Hospital - Emergency Department Upgrade and Behavioural Assessment Urgent Care Centre | WA Health | Perth | 30 | 2019-20 to 2024-25 |
| Hospitals, Health Centres and Community Facilities - Laverton Hospital | WA Health | Goldfields Esperance | 27 | 2019-20 to 2023-24 |
| Hospitals, Health Centres and Community Facilities - Royal Perth Hospital - Intensive Care Unit (ICU) - Election Commitments | WA Health | Perth | 26 | 2019-20 to 2023-24 |
| Hospitals, Health Centres and Community Facilities - Bentley Health Service - Secure Extended Care Unit | WA Health | Perth | 24 | 2021-22 to 2026-27 |
| Information and Communication Equipment and Infrastructure - Critical Health ICT Infrastructure Program | WA Health | State-wide | 24 | 2022-23 to 2025-26 |

| Health and Mental Health | | | | |
|---|--------------------------|------------|----------------------|-----------------------|
| Project name | Responsible organisation | Region | Estimated Total Cost | Entire Project Period |
| Hospitals, Health Centres and Community Facilities - Sir Charles Gairdner Hospital - ICU | WA Health | Perth | 23 | 2022-24 to 2024-25 |
| Equipment Vaccination System and Equipment | WA Health | State-wide | 23 | 2020-21 to 2023-24 |
| Hospitals, Health Centres and Community Facilities - Sir Charles Gairdner Hospital - 24 Hospital Beds | WA Health | Perth | 22 | 2021-22 to 2023-24 |

| Education and Training | | | | |
|---|--------------------------|------------|----------------------|-----------------------|
| Project name | Responsible organisation | Region | Estimated Total Cost | Entire Project Period |
| New Primary Schools (2025-2029) – Locations to be determined | Department of Education | State-wide | 251 | 2022-23 to 2028-29 |
| Transportable Classrooms | Department of Education | State-wide | 124 | 2014-15 to 2026-27 |
| Additions and Improvements – Roebourne District High School | Department of Education | Pilbara | 72 | 2020-21 to 2026-27 |
| Additions and Improvements – Rockingham Senior High School and Education Support Centre | Department of Education | Perth | 60 | 2023-24 to 2026-27 |

| Education and Training | | | | |
|---|--------------------------|---------|----------------------|-----------------------|
| Project name | Responsible organisation | Region | Estimated Total Cost | Entire Project Period |
| New Secondary School – Piara Waters Senior High School | Department of Education | Perth | 59 | 2019-20 to 2023-24 |
| Bob Hawke College Stage 2 | Department of Education | Perth | 53 | 2019-20 to 2023-24 |
| Alkimos College Stage 2 | Department of Education | Perth | 51 | 2021-22 to 2024-25 |
| John Forrest Secondary College - Redevelopment | Department of Education | Perth | 50 | 2018-19 to 2024-25 |
| Additions and Improvements - Brabham Primary School | Department of Education | Perth | 42 | 2022-23 to 2026-27 |
| Additions and Improvements - Safety Bay Senior High School | Department of Education | Perth | 40 | 2023-24 to 2026-27 |
| Additions and Improvements – Rossmoyne Senior High School | Department of Education | Perth | 39 | 2021-22 to 2025-26 |
| Additions and Improvements - Duncraig Senior High School | Department of Education | Perth | 38 | 2021-22 to 2025-26 |
| Additions and Improvements – Carine Senior High School | Department of Education | Perth | 32 | 2020-21 to 2024-25 |
| Additions and Improvements – Karratha Senior High School | Department of Education | Pilbara | 32 | 2020-21 to 2024-25 |
| Additions and Improvements – Ashdale Secondary College | Department of Education | Perth | 29 | 2022-23 to 2025-26 |
| Additions and Improvements – Ridge View Secondary College Stage 2 | Department of Education | Perth | 28 | 2019-20 to 2023-24 |

| Education and Training | | | | |
|---|--------------------------|-----------|----------------------|-----------------------|
| Project name | Responsible organisation | Region | Estimated Total Cost | Entire Project Period |
| Additions and Improvements – John Curtin College of Arts | Department of Education | Perth | 27 | 2021-22 to 2025-26 |
| New School – Wattleup (East) Primary School | Department of Education | Perth | 27 | 2021-22 to 2024-25 |
| New School – Henley Brook Primary School | Department of Education | Perth | 27 | 2021-22 to 2024-25 |
| New School – Wellard Village Primary School | Department of Education | Perth | 27 | 2019-20 to 2024-25 |
| Additions and Improvements – Kalamunda Senior High School | Department of Education | Perth | 26 | 2020-21 to 2025-26 |
| New School – Madora Bay Primary School | Department of Education | Peel | 26 | 2020-21 to 2023-24 |
| Additions and Improvements – Derby District High School | Department of Education | Kimberley | 26 | 2020-21 to 2024-25 |
| Additions and Improvements – Lynwood Senior High School | Department of Education | Perth | 25 | 2020-21 to 2024-25 |
| Additions and Improvements – Harrisdale Primary School | Department of Education | Perth | 25 | 2022-23 to 2026-27 |
| New School – Dayton Primary School | Department of Education | Perth | 24 | 2020-21 to 2023-24 |
| New School – Landsdale Gardens Primary School | Department of Education | Perth | 24 | 2020-21 to 2024-25 |
| New School – Shorehaven Primary School | Department of Education | Perth | 23 | 2019-20 to 2023-24 |

| Education and Training | | | | |
|--|--|----------------|----------------------|-----------------------|
| Project name | Responsible organisation | Region | Estimated Total Cost | Entire Project Period |
| Byford Secondary College Stage 4 | Department of Education | Perth | 22 | 2022-23 to 2025-26 |
| New School – Riva Primary School | Department of Education | Perth | 22 | 2019-20 to 2023-24 |
| Additions and Improvements – Joseph Banks Secondary College | Department of Education | Perth | 21 | 2020-21 to 2024-25 |
| New School - Hillarys Primary School (Rebuild) | Department of Education | Perth | 20 | 2020-21 to 2024-25 |
| New Buildings and Additions- North Metropolitan TAFE – Balga Campus | Department of Training and Workforce Development | Perth | 48 | 2020-21 to 2025-26 |
| New Buildings and Additions – North Regional TAFE – Pundulumurra Trade Expansion (South Hedland) | Department of Training and Workforce Development | Pilbara | 43 | 2020-21 to 2025-26 |
| New Buildings and Additions – South Metropolitan TAFE – Armadale Training Campus | Department of Training and Workforce Development | Perth | 39 | 2020-21 to 2025-26 |
| New Buildings and Additions – South Regional TAFE – Albany Trade Workshop | Department of Training and Workforce Development | Great Southern | 22 | 2020-21 to 2024-25 |

| Education and Training | | | | |
|---|--|--------|----------------------|-----------------------|
| Project name | Responsible organisation | Region | Estimated Total Cost | Entire Project Period |
| New Buildings and Additions – North Metropolitan TAFE – Joondalup Light Auto Workshop | Department of Training and Workforce Development | Perth | 20 | 2020-21 to 2024-25 |

| Housing Sector | | | | |
|---|--------------------------|--------------|----------------------|-----------------------|
| Project name | Responsible organisation | Region | Estimated Total Cost | Entire Project Period |
| Investment into New Social Housing | Communities | State-wide | 959 | 2020-21 to 2026-27 |
| Land - Acquisition Program | Communities | State-wide | 357 | 2020-21 to 2026-27 |
| Government Regional Officer Housing program | Communities | Regional-all | 216 | 2020-21 to 2026-27 |
| METRONET Social and Affordable Housing and Jobs Package | Communities | Perth | 117 | 2020-21 to 2026-27 |
| Housing and Homelessness Investment Package - New Social Housing Builds | Communities | State-wide | 99 | 2019-20 to 2024-25 |
| Social Housing Economic Recovery Package - Refurbishments | Communities | State-wide | 96 | 2020-21 to 2023-24 |
| Crisis Accommodation Program | Communities | State-wide | 76 | 2020-21 to 2026-27 |

| Housing Sector | | | | |
|--|--------------------------|------------|----------------------|-----------------------|
| Project name | Responsible organisation | Region | Estimated Total Cost | Entire Project Period |
| Housing and Homelessness Investment Package - Common Ground - Perth | Communities | Perth | 71 | 2020-21 to 2025-26 |
| Social Housing Economic Recovery Package - New Builds | Communities | State-wide | 50 | 2020-21 to 2024-25 |
| Goodstart Shared Equity Program | Communities | State-wide | 47 | 2020-21 to 2026-27 |
| Aboriginal Short Stay Accommodation - Perth | Communities | Perth | 31 | 2021-22 to 2025-26 |
| Housing and Homelessness Investment Package - Common Ground - Mandurah | Communities | Peel | 28 | 2020-21 to 2025-26 |
| Aboriginal Short Stay Accommodation - Geraldton | Communities | Mid West | 28 | 2020-21 to 2024-25 |
| Aboriginal Short Stay Accommodation - East Kimberley | Communities | Kimberley | 21 | 2021-22 to 2025-26 |
| Housing and Homelessness Investment Package - Shared Equity | Communities | State-wide | 21 | 2020-21 to 2026-27 |

| Arts, Culture, Sport and Recreation | | | | |
|---|---|--------|----------------------|-----------------------|
| Project name | Responsible organisation | Region | Estimated Total Cost | Entire Project Period |
| Election Commitments - Perth Zoo Master Plan 2040 | Biodiversity, Conservation and Attractions | Perth | 30 | 2021-22 to 2024-25 |
| Election Commitments - Tourism Package - Peri-Urban Parks | Biodiversity, Conservation and Attractions | Perth | 29 | 2021-22 to 2025-26 |
| Infrastructure Stimulus Package - Perth Zoo Café/ Function Centre | Biodiversity, Conservation and Attractions | Perth | 22 | 2020-21 to 2023-24 |
| Perth Concert Hall Redevelopment | Local Government, Sport and Cultural Industries | Perth | 150 | 2020-21 to 2026-27 |
| Local Government, Sport and Cultural Industries - State Hockey Centre - Design and Construction | Local Government, Sport and Cultural Industries | Perth | 135 | 2022-23 to 2026-27 |
| Screen Production Facility | Local Government, Sport and Cultural Industries | Perth | 107 | 2021-22 to 2024-25 |
| Local Government, Sport and Cultural Industries - State Football (Soccer) Centre | Local Government, Sport and Cultural Industries | Perth | 46 | 2020-21 to 2023-24 |
| Aboriginal Cultural Centre (Planning phase only) | Local Government, Sport and Cultural Industries | Perth | 45 | 2023-24 to 2024-25 |
| Local Government, Sport and Cultural Industries - Perth Cultural Centre | Local Government, Sport and Cultural Industries | Perth | 35 | 2021-22 to 2025-26 |

Arts, Culture, Sport and Recreation

| Project name | Responsible organisation | Region | Estimated Total Cost | Entire Project Period |
|--|--|--------|----------------------|-----------------------|
| Optus Stadium Capital Works | Western Australian Sports Centre Trust | Perth | 40 | 2017-18 to 2026-27 |
| HBF Park - Stadium Modifications to Host 2023 FIFA Women's World Cup | Western Australian Sports Centre Trust | Perth | 36 | 2021-22 to 2023-24 |

Justice and Community Safety

| Project name | Responsible organisation | Region | Estimated Total Cost | Entire Project Period |
|---|-----------------------------|------------|----------------------|-----------------------|
| Vehicle Programs - Primary Fire and Emergency Fleet | Fire and Emergency Services | State-wide | 141 | 2019-20 to 2026-27 |
| Land and Building Works - Facility Modifications | Fire and Emergency Services | State-wide | 66 | 2014-15 to 2026-27 |
| Plant and Equipment Works - Equipment Replacement Program | Fire and Emergency Services | State-wide | 29 | 2013-14 to 2026-27 |
| Intangible Asset Development | Fire and Emergency Services | Perth | 28 | 2020-21 to 2026-27 |
| Land and Building Works - VFRS/VFES Upgrade and Replacement Program | Fire and Emergency Services | State-wide | 24 | 2018-19 to 2023-24 |
| Custodial - Casuarina Prison Expansion - Stage Two | Justice | Perth | 204 | 2018-19 to 2025-26 |
| Custodial - Building Upgrades and Replacement | Justice | State-wide | 98 | 2013-14 to 2026-27 |

| Justice and Community Safety | | | | |
|--|--------------------------------|------------|----------------------|-----------------------|
| Project name | Responsible organisation | Region | Estimated Total Cost | Entire Project Period |
| Custodial - Adult Facilities | Justice | State-wide | 59 | 2013-14 to 2026-27 |
| Custodial - Banksia Hill Detention Centre Upgrades and Urgent Works | Justice | Perth | 48 | 2021-22 to 2025-26 |
| Administrative - Information Projects - ICT Infrastructure Upgrade | Justice | Perth | 34 | 2012-13 to 2026-27 |
| Courts - Court Audiovisual Maintenance and Enhancements | Justice | State-wide | 30 | 2013-14 to 2026-27 |
| Land and Buildings Infrastructure - Fremantle Police Complex | Western Australia Police Force | Perth | 100 | 2020-21 to 2026-27 |
| Land and Buildings Infrastructure - Armadale Courthouse and Police Complex | Western Australia Police Force | Perth | 77 | 2012-13 to 2023-24 |
| ICT and Radio Infrastructure - Emergency Services Radio Network | Western Australia Police Force | State-wide | 47 | 2021-22 to 2024-25 |
| Land and Buildings Infrastructure - 950 Police Officer Infrastructure Program - West Kimberley District Support Facility | Western Australia Police Force | Kimberley | 30 | 2023-24 to 2025-26 |

Justice and Community Safety

| Project name | Responsible organisation | Region | Estimated Total Cost | Entire Project Period |
|--|--------------------------------|--------|----------------------|-----------------------|
| Land and Buildings Infrastructure - Forrestfield Police Station - Election Commitments | Western Australia Police Force | Perth | 26 | 2021-22 to 2025-26 |
| Land and Buildings Infrastructure - Baldivis Police Station - Election Commitments | Western Australia Police Force | Perth | 25 | 2021-22 to 2025-26 |

Planning and Land Use

| Project name | Responsible organisation | Region | Estimated Total Cost | Entire Project Period |
|--|--------------------------|--------------|----------------------|-----------------------|
| Development of Land - Industrial Lands Authority Program - Industry and Infrastructure Acquisition and Development | DevelopmentWA | State-wide | 1,760 | 2008-09 to 2026-27 |
| Development of Land - Regional Program - Regional Land Acquisition and Development | DevelopmentWA | Regional-all | 1,725 | 2006-07 to 2026-27 |
| Metropolitan Land Acquisition and Development | DevelopmentWA | Perth | 1,668 | 2009-10 to 2026-27 |
| Residential Projects and Land Development for Social and Affordable Housing | DevelopmentWA | State-wide | 768 | 2020-21 to 2026-27 |

| Planning and Land Use | | | | |
|--|--------------------------|--------|----------------------|-----------------------|
| Project name | Responsible organisation | Region | Estimated Total Cost | Entire Project Period |
| Development of Land - Metropolitan Program - Ocean Reef Marina | DevelopmentWA | Perth | 283 | 2017-18 to 2026-27 |
| Development of Land - Metropolitan Program - Subi East Precinct | DevelopmentWA | Perth | 143 | 2019-20 to 2026-27 |
| Development of Land - Metropolitan Program - East Perth Power Station | DevelopmentWA | Perth | 88 | 2019-20 to 2024-25 |
| Development of Land - Metropolitan Program - Alkimos Central | DevelopmentWA | Perth | 79 | 2019-20 to 2026-27 |
| Development of Land - Residential Program - Bentley Residential Redevelopment | DevelopmentWA | Perth | 48 | 2022-23 to 2026-27 |
| Australian Marine Complex Superyacht Fabrication Facility and Infrastructure | DevelopmentWA | Perth | 39 | 2020-21 to 2023-24 |
| Development of Land - Industrial Lands Authority Program - Election Commitment - Peel Business Park, Nambeelup | DevelopmentWA | Peel | 37 | 2016-17 to 2023-24 |

| Planning and Land Use | | | | |
|--|--|-----------|----------------------|-----------------------|
| Project name | Responsible organisation | Region | Estimated Total Cost | Entire Project Period |
| Neerabup Australian Automation and Robotics Park | DevelopmentWA | Perth | 21 | 2020-21 to 2026-27 |
| ICT Projects - ICT Infrastructure | Planning, Lands and Heritage | Perth | 30 | 2012-13 to 2026-27 |
| ICT Projects - Asset Replacement - ICT | Planning, Lands and Heritage | Perth | 22 | 2012-13 to 2026-27 |
| Other New Works | Planning, Lands and Heritage | Kimberley | 21 | 2023-24 to 2025-26 |
| Acquisition of Land – 2023-24 Program | Western Australian Planning Commission | Perth | 90 | 2023-24 |
| Acquisition of Land - 2024-25 Program | Western Australian Planning Commission | Perth | 43 | 2024-25 |
| Acquisition of Land - 2025-26 Program | Western Australian Planning Commission | Perth | 43 | 2025-26 |
| Acquisition of Land - 2026-27 Program | Western Australian Planning Commission | Perth | 43 | 2026-27 |
| Buildings/Infrastructure | Western Australian Planning Commission | Perth | 23 | 2004-05 to 2026-27 |