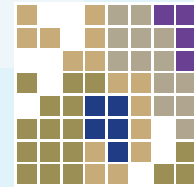




Department of Planning,
Lands and Heritage



Urban Growth Monitor

Perth Metropolitan, Peel and Greater Bunbury Regions

Appendices

15

January 2024

Western Australian Planning Commission
Gordon Stephenson House
140 William Street
Perth WA 6000

Locked Bag 2506
Perth WA 6001



Table of Contents

Figures and Tables

Figure 1:	Tiered land supply assessment model framework	3
Figure 2:	Tiered land supply assessment model outputs for the Metropolitan, Peel and Greater Bunbury regions combined	4
Figure 3:	Tiered land supply assessment model outputs for the Metropolitan region	5
Figure 4:	Tiered land supply assessment model outputs for the Central sub-region	7
Figure 5:	Tiered land supply assessment model outputs for the North-West sub-region	9
Figure 6:	Tiered land supply assessment model outputs for the North-East sub-region	11
Figure 7:	Tiered land supply assessment model outputs for the South-East sub-region	13
Figure 8:	Tiered land supply assessment model outputs for the South-West sub-region	15
Figure 9:	Tiered land supply assessment model outputs for the Peel region	17
Figure 10:	Tiered land supply assessment model outputs for the Greater Bunbury region	19
Map 1:	Metropolitan region land supply assessment	6
Map 2:	Central sub-region land supply assessment	8
Map 3:	North-West sub-region land supply assessment	10
Map 4:	North-East sub-region land supply assessment	12
Map 5:	South-East sub-region land supply assessment	14
Map 6:	South-West sub-region land supply assessment	16
Map 7:	Peel region land supply assessment	18
Map 8:	Greater Bunbury region land supply assessment	20

Note: Figures may not sum due to rounding.

Figure 1: Tiered land supply assessment model framework

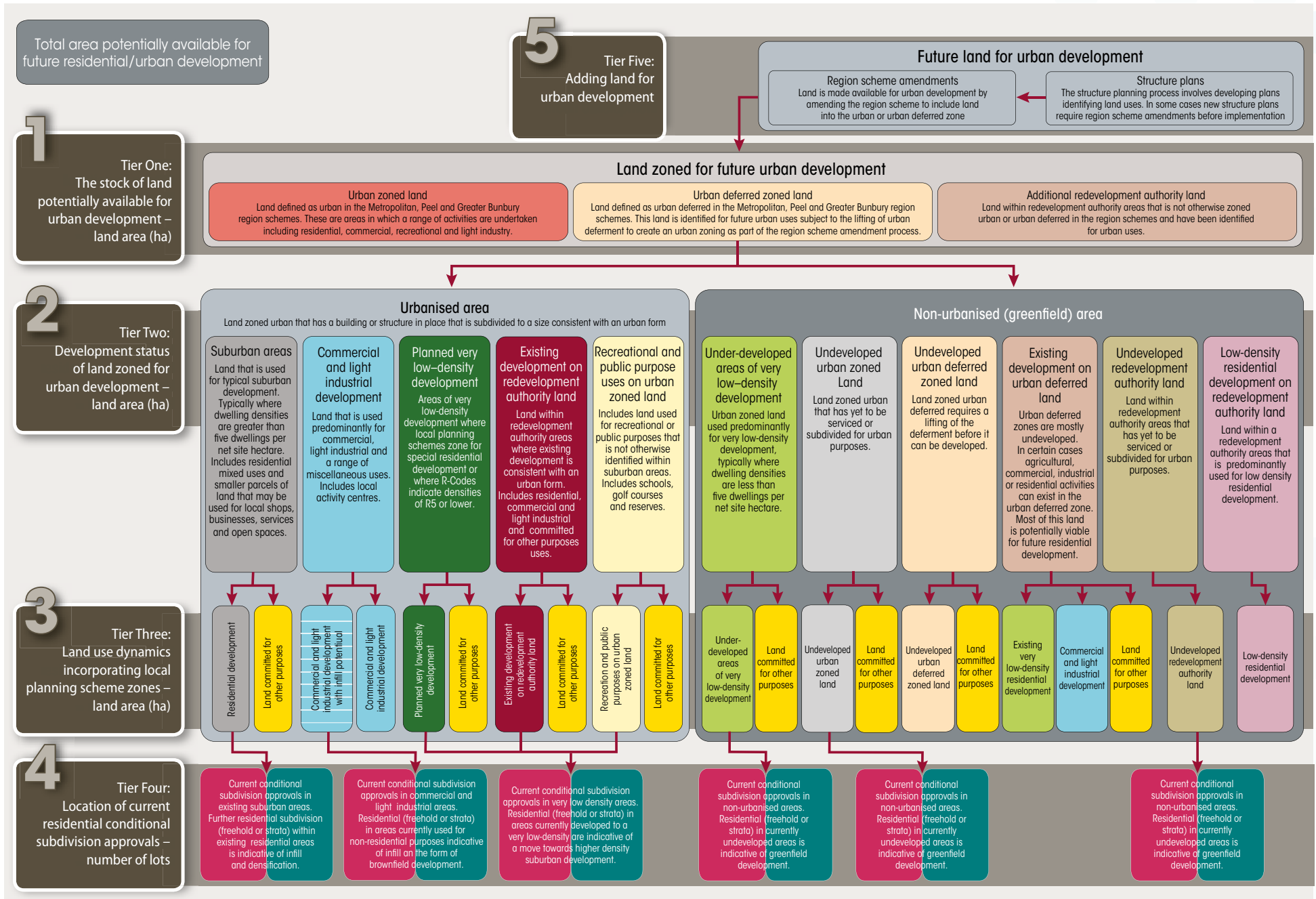
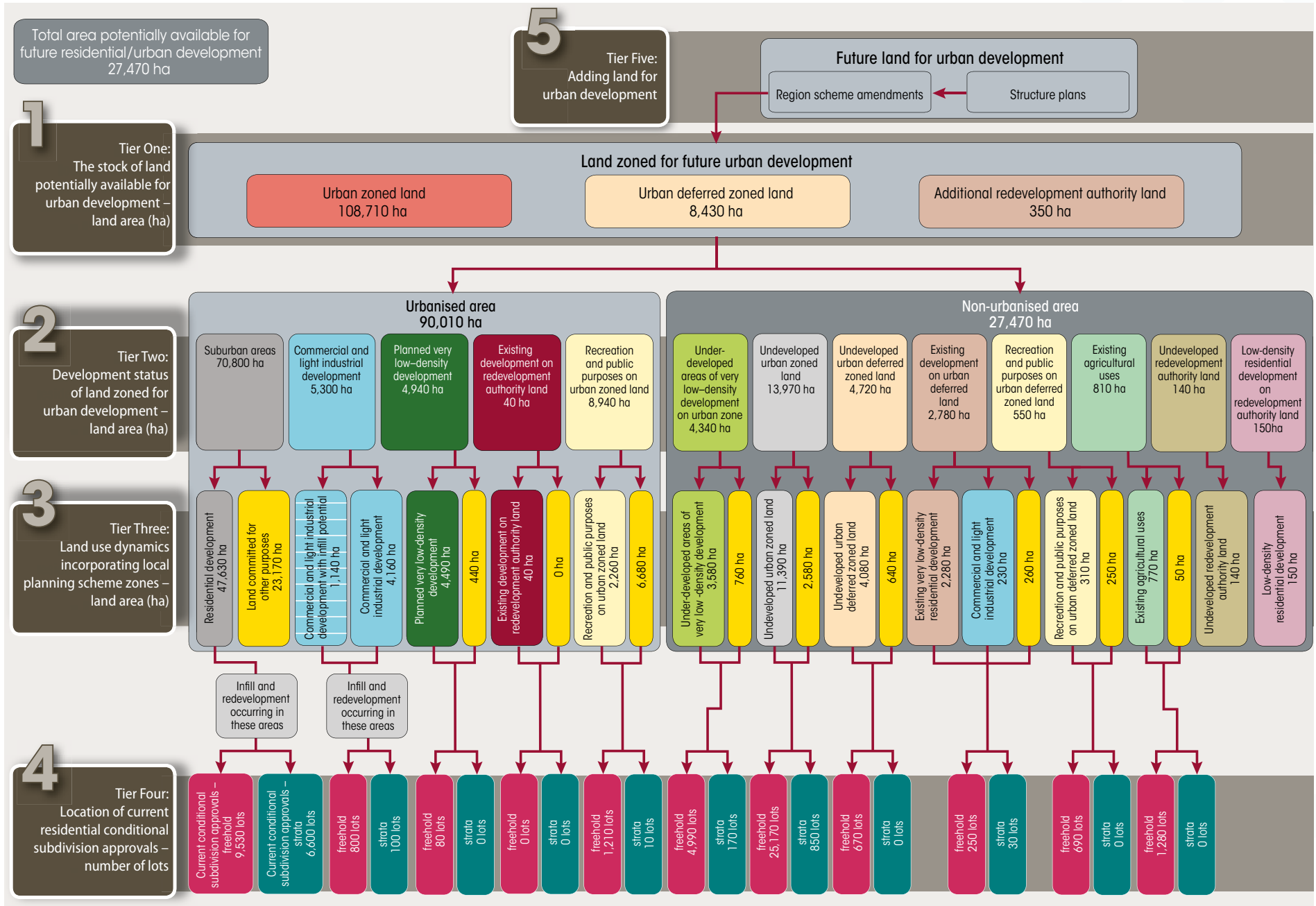
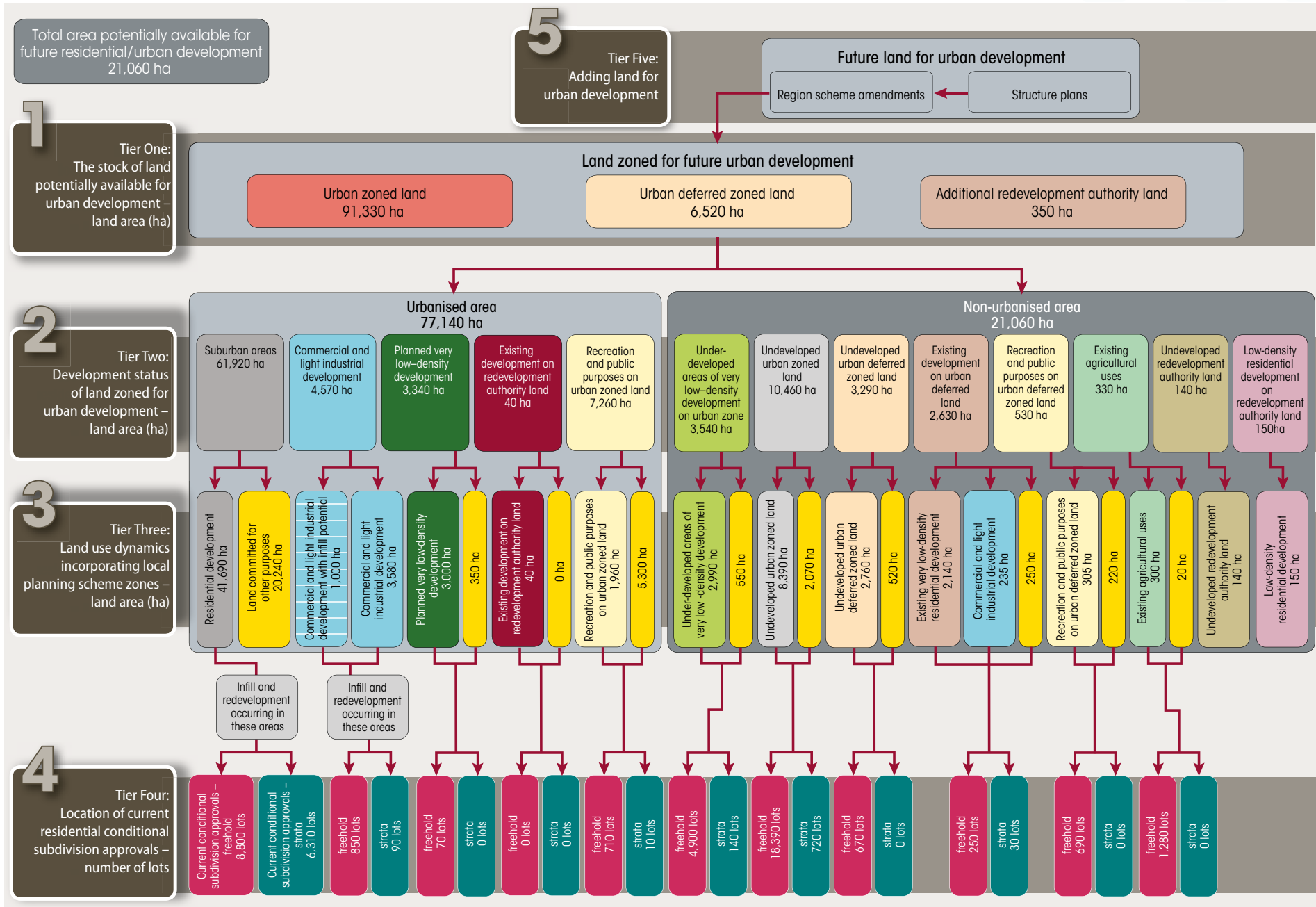


Figure 2: Tiered land supply assessment for the Perth, Peel and Greater Bunbury regions combined



Note: Figures may not sum due to rounding.

Figure 3: Tiered land supply assessment model outputs for the Metropolitan region



Note: Figures may not sum due to rounding.

Map 1: Metropolitan Region land supply assessment

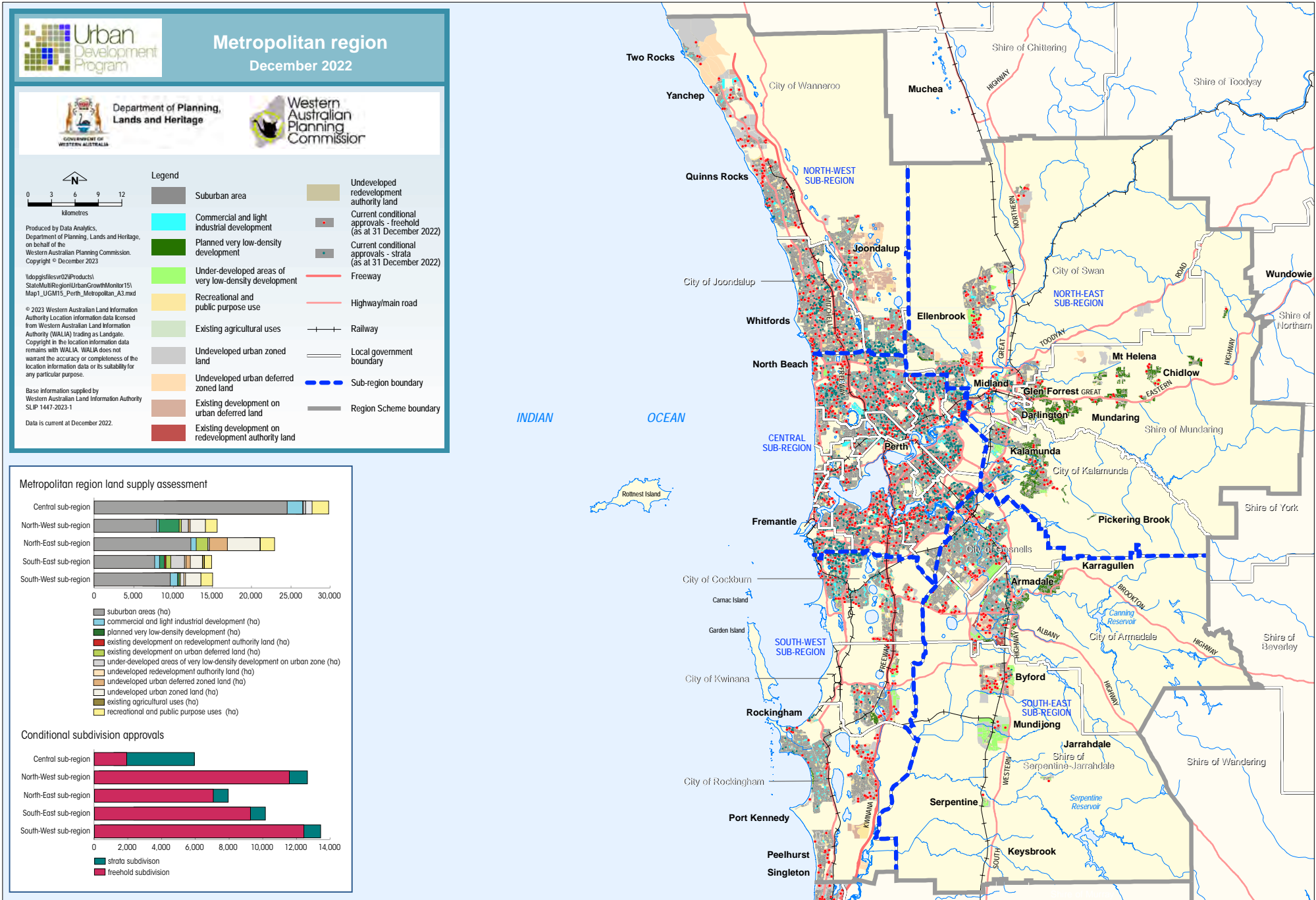
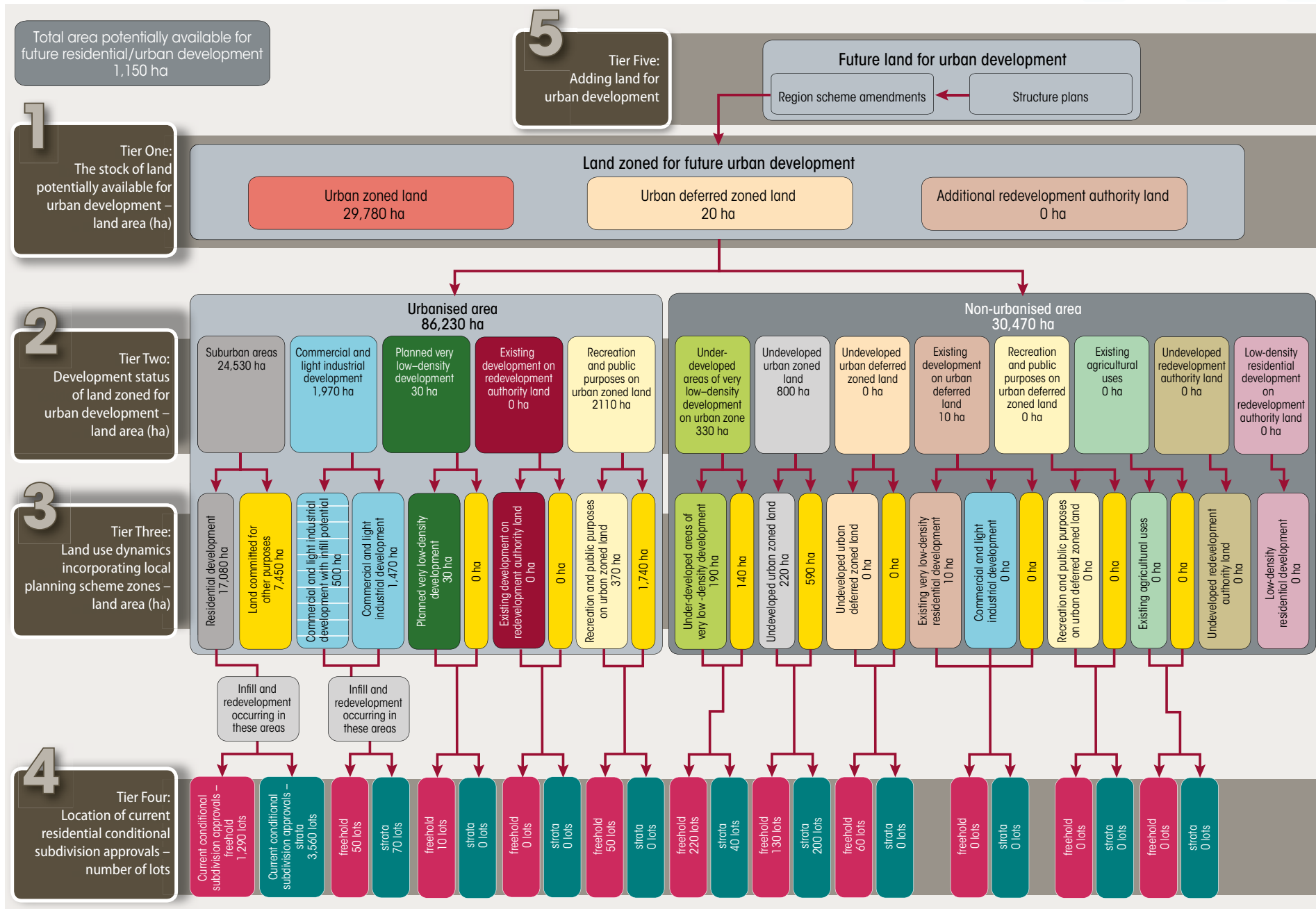


Figure 4: Tiered land supply assessment model outputs for the Central sub-region



Note: Figures may not sum due to rounding.

Map 2: Central sub-region land supply assessment

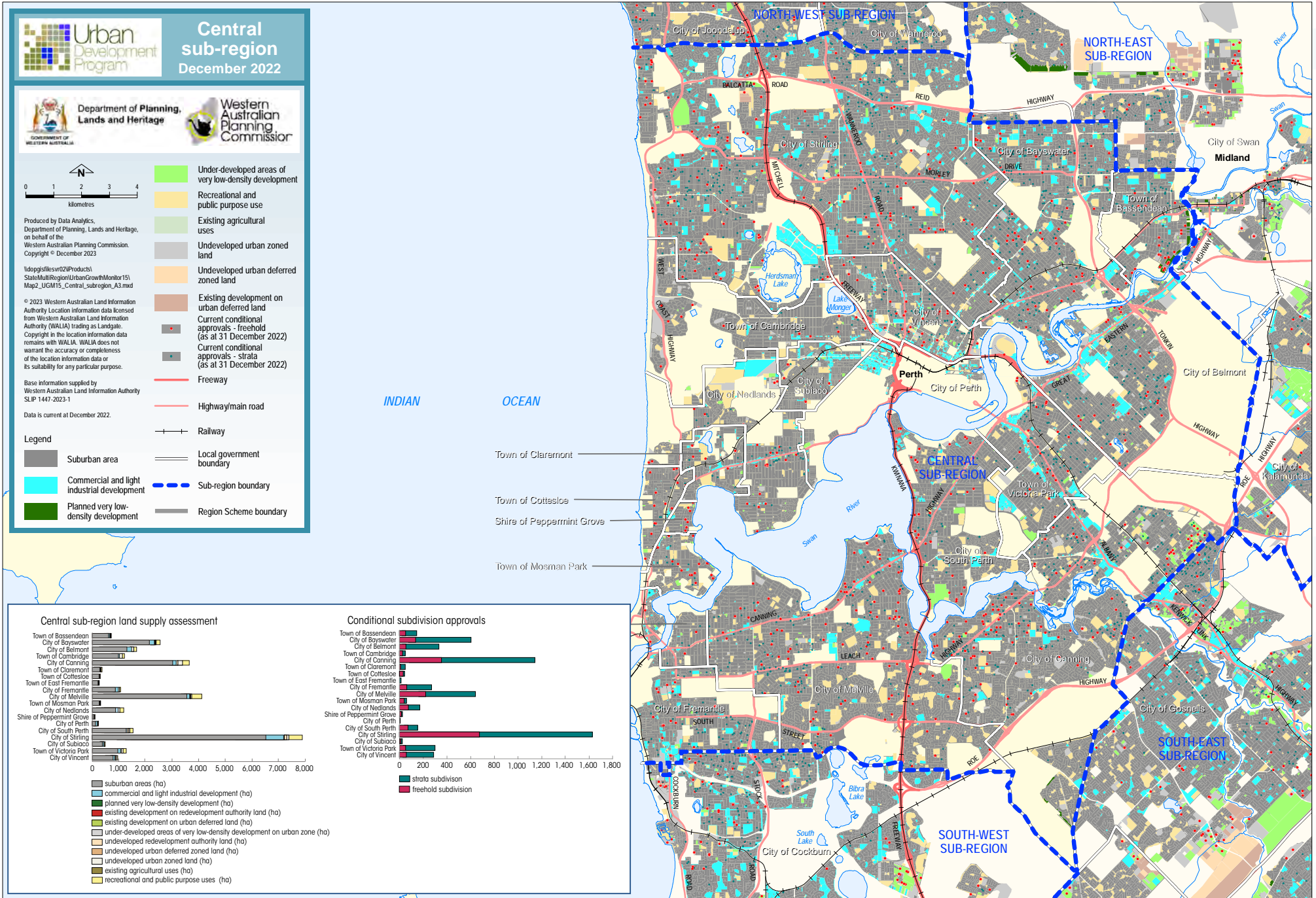
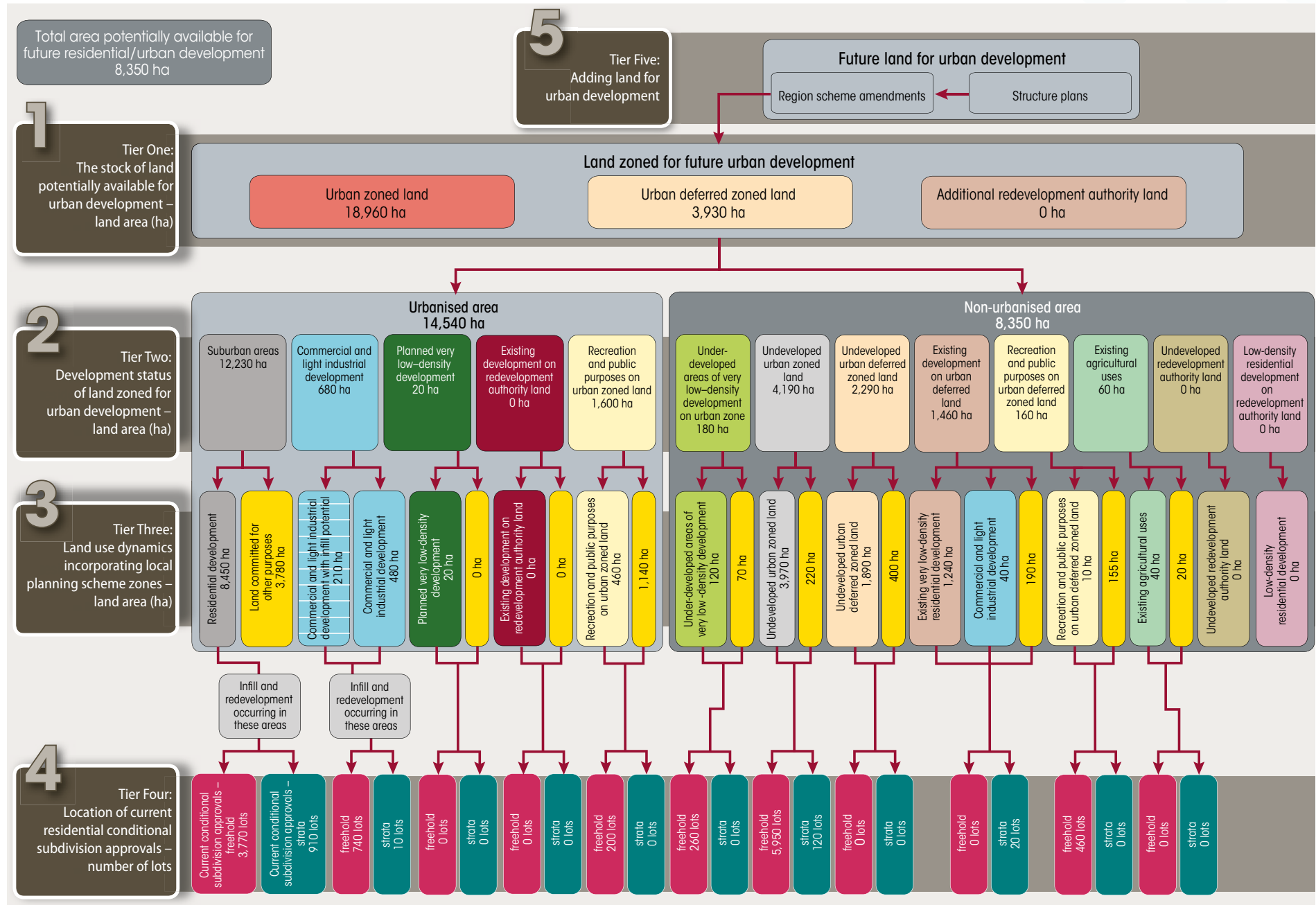


Figure 5: Tiered land supply assessment model outputs for the North-West sub-region



Note: Figures may not sum due to rounding.

Map 3: North-West sub-region land supply assessment

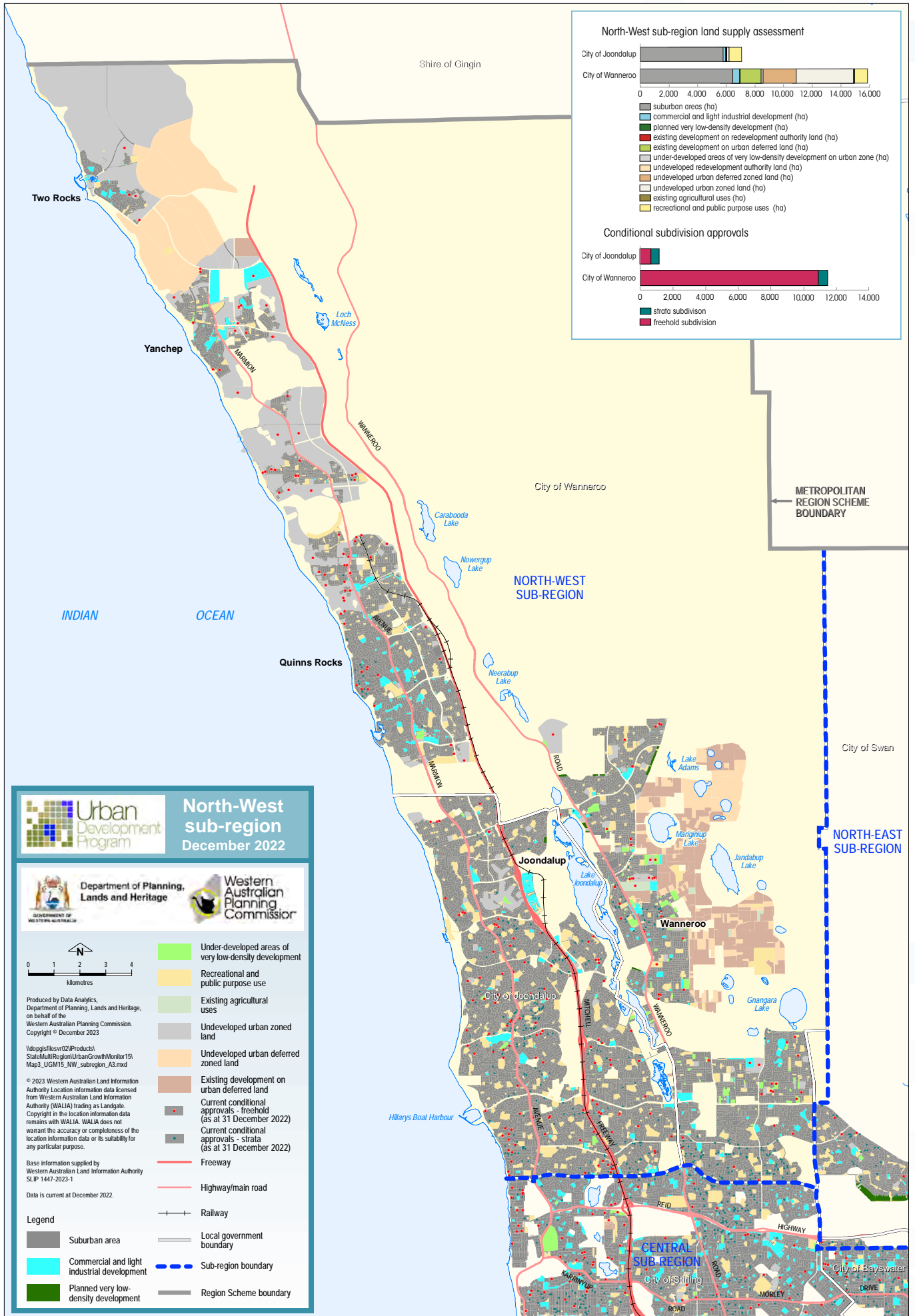
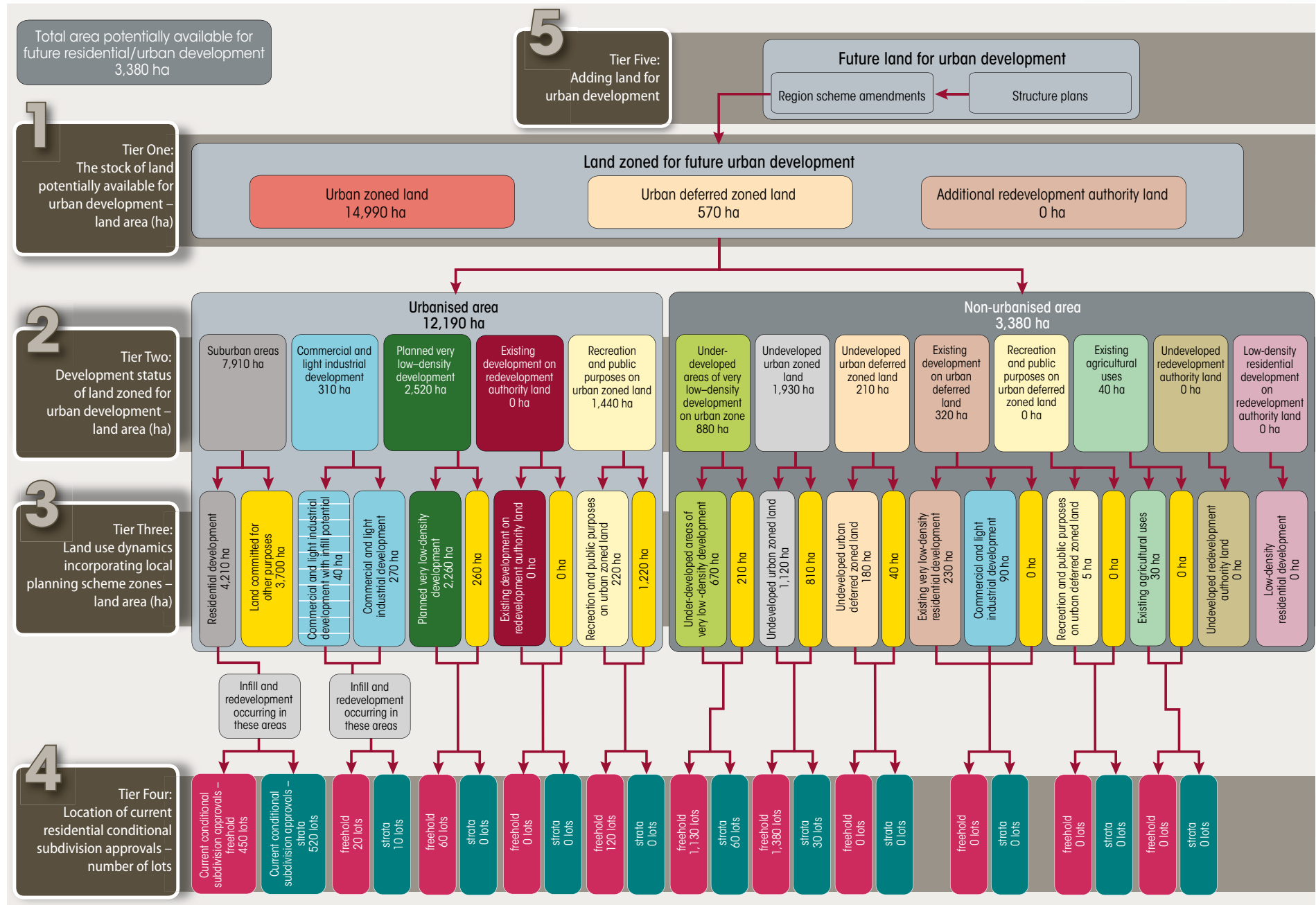


Figure 6: Tiered land supply assessment model outputs for the North-East sub-region



Note: Figures may not sum due to rounding.

Map 4: North-East sub-region land supply assessment

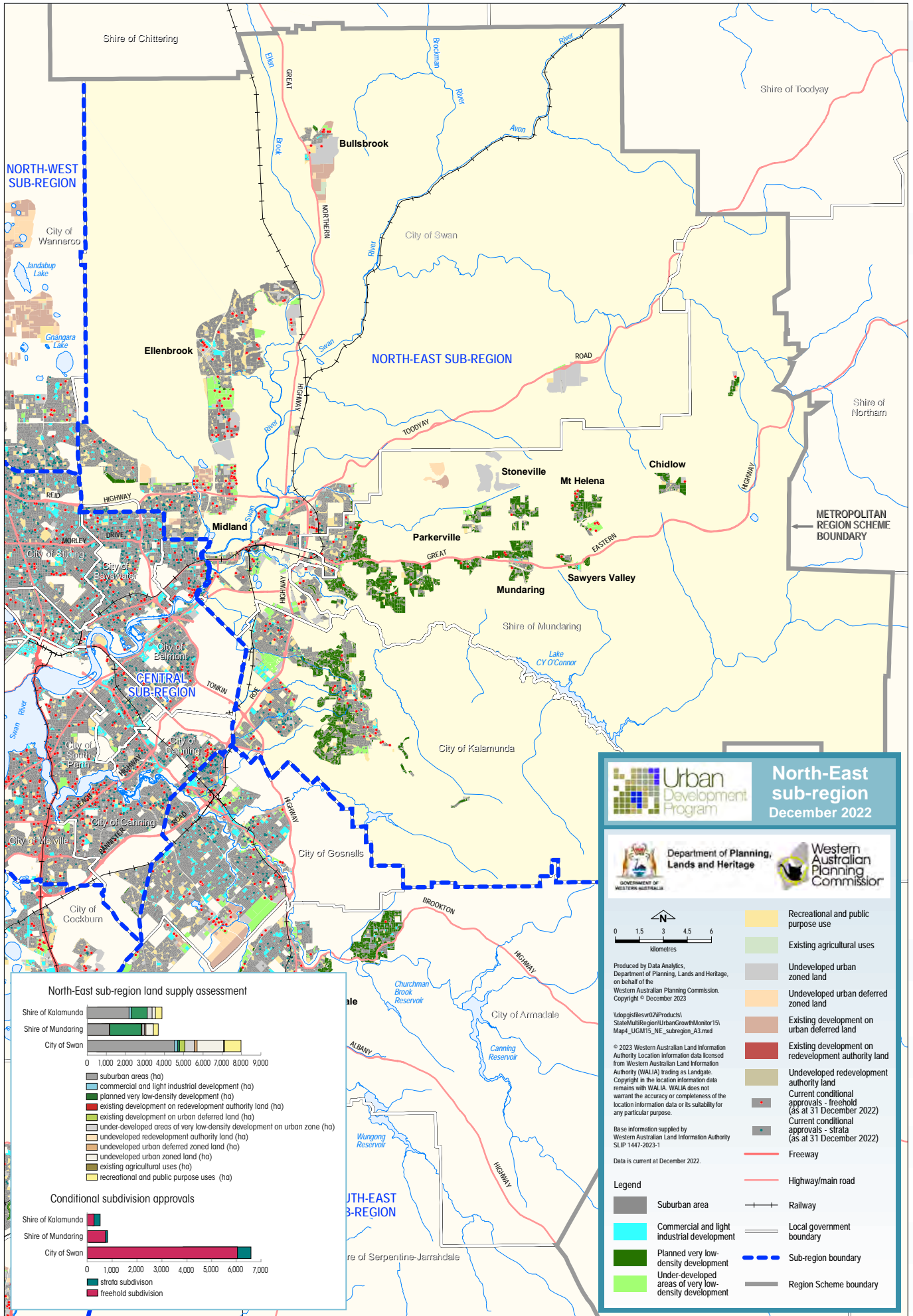
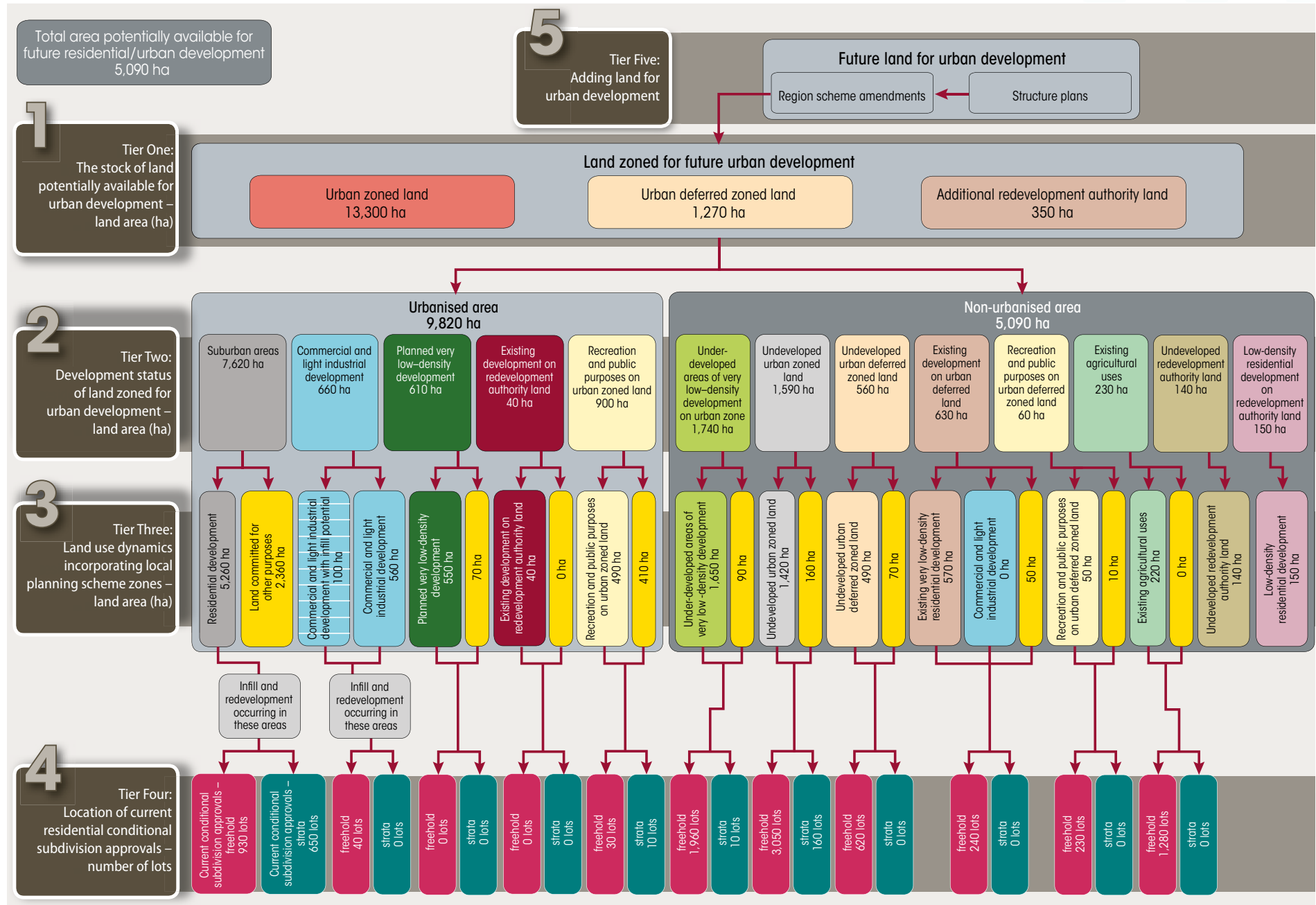


Figure 7: Tiered land supply assessment model outputs for the South-East sub-region



Note: Figures may not sum due to rounding.

Map 5: South-East sub-region land supply assessment

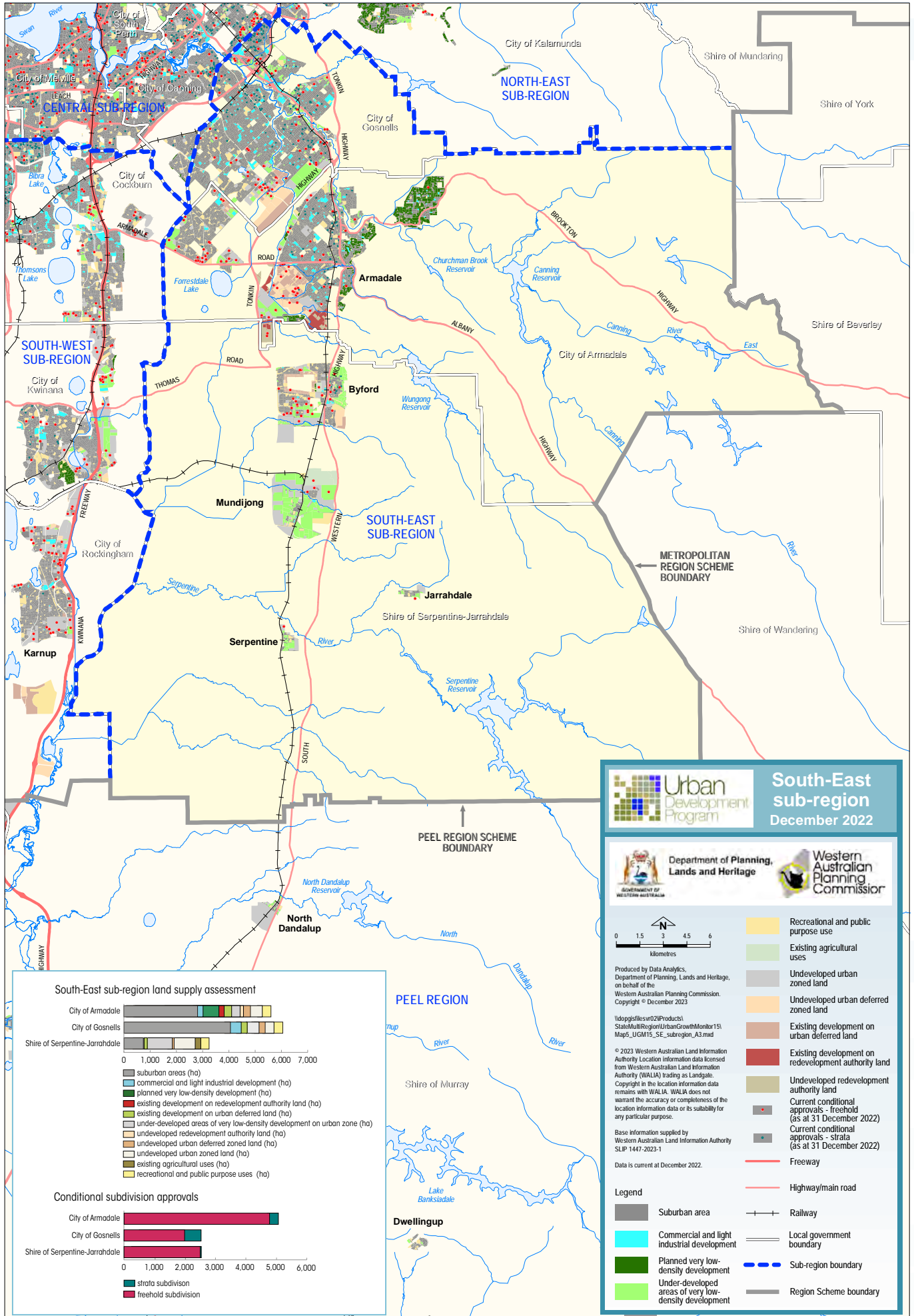
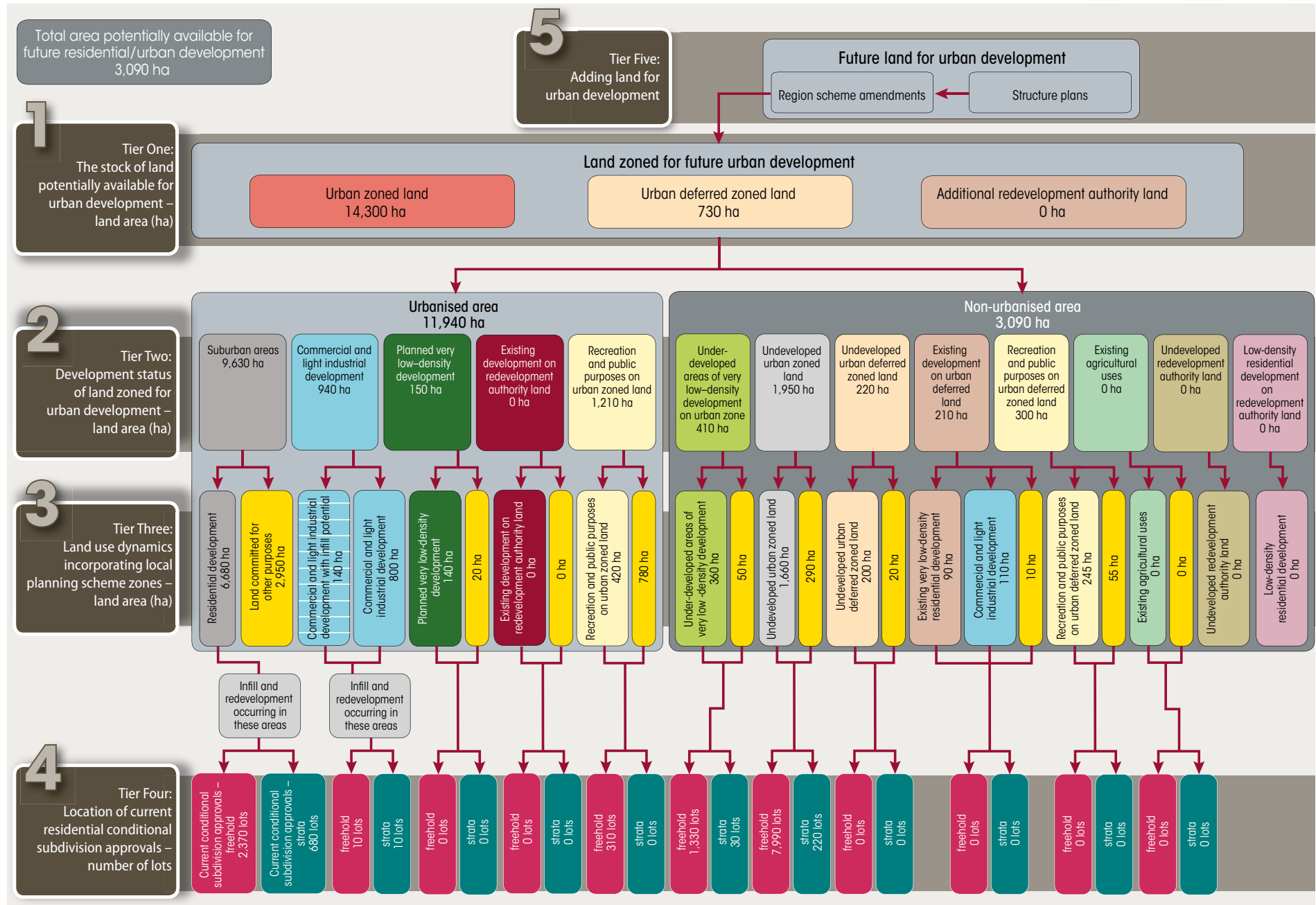


Figure 8: Tiered land supply assessment model outputs for the South-West sub-region



Note: Figures may not sum due to rounding.

Map 6: South-West sub-region land supply assessment

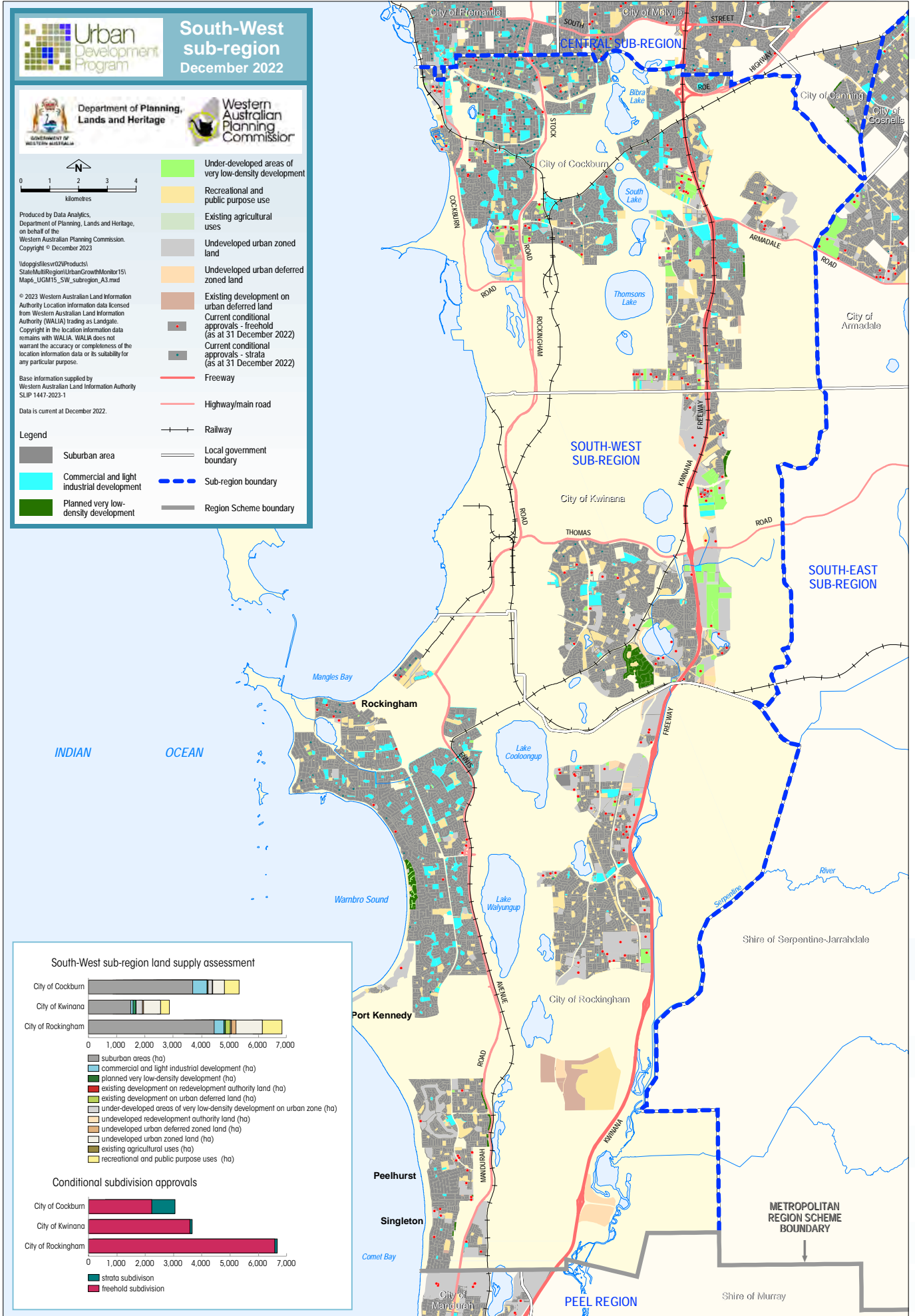
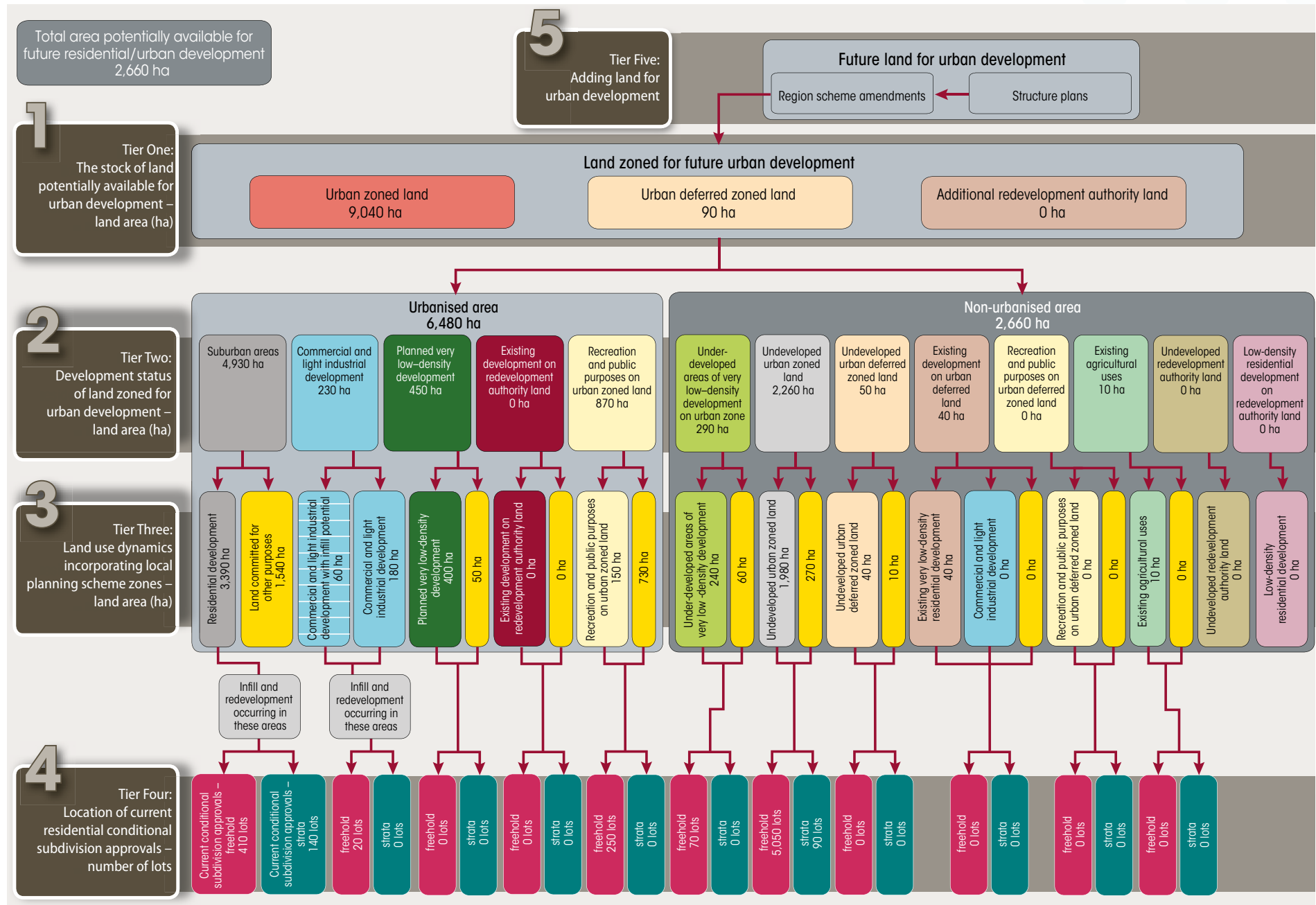


Figure 9: Tiered land supply assessment model outputs for the Peel region



Note: Figures may not sum due to rounding.

Map 7: Peel region land supply assessment

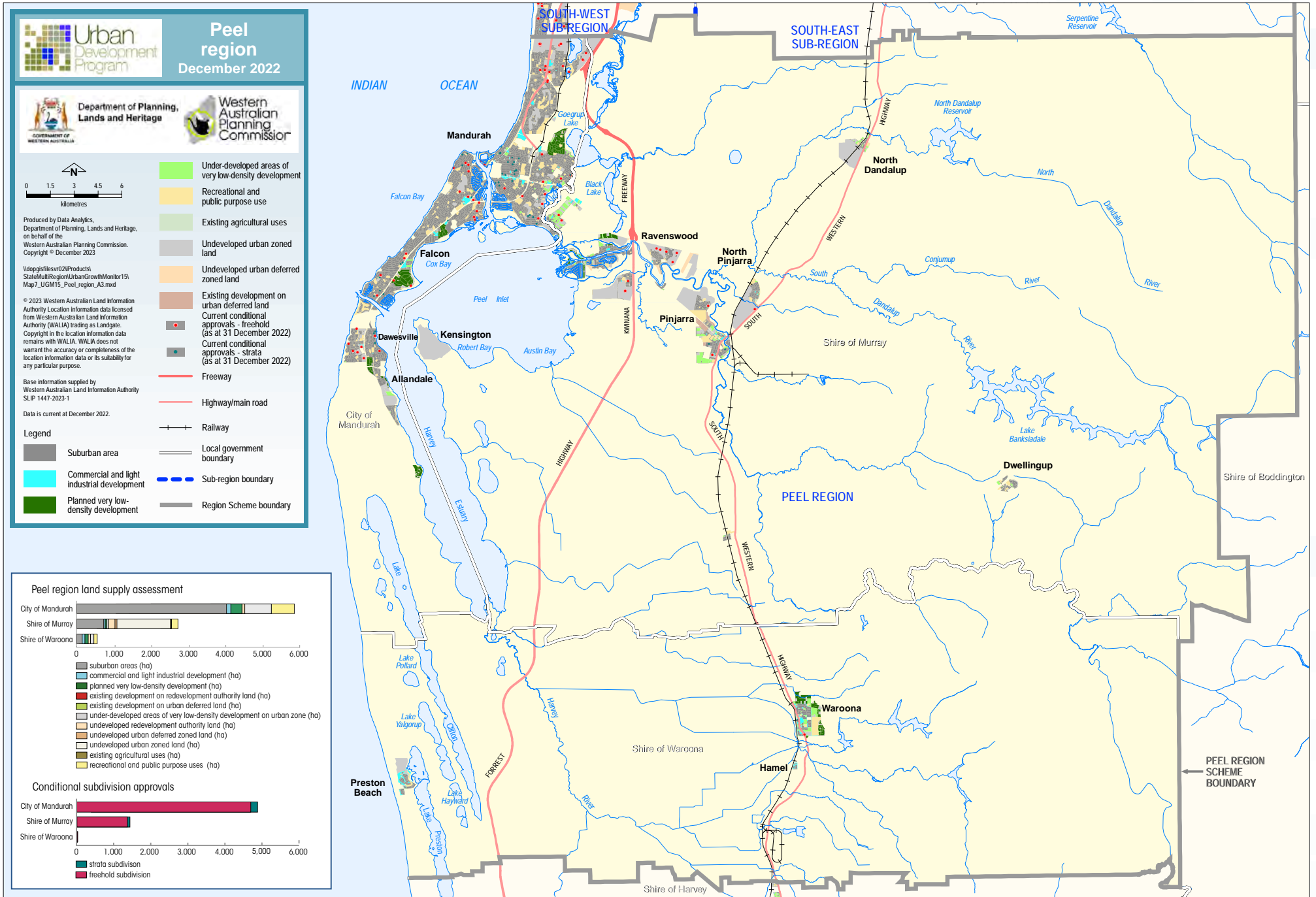
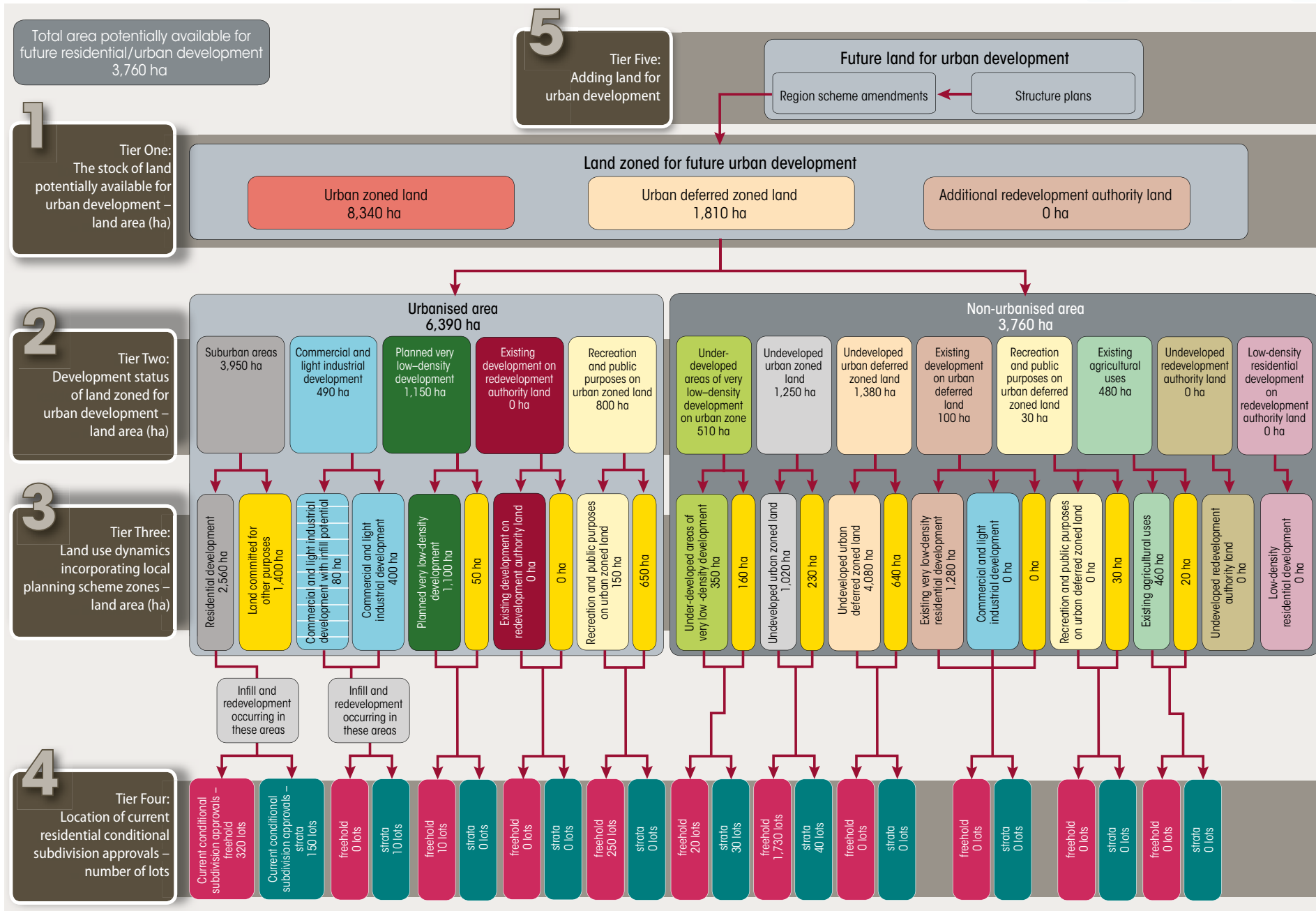


Figure 10: Tiered land supply assessment model outputs for the Greater Bunbury region



Note: Figures may not sum due to rounding.

Map 8: Greater Bunbury region land supply assessment

