

# ARMADALE STATION PRECINCT - DA 5

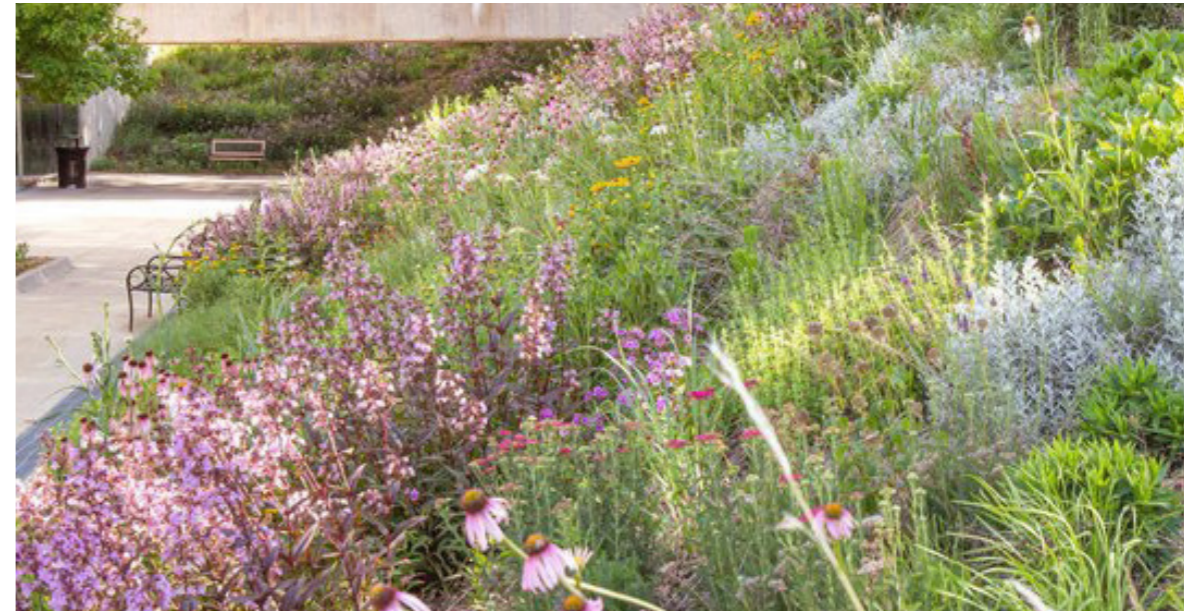




# LOOK AND FEEL



## SEASONAL WILDFLOWER



## FEATURE TREES



### SUGGESTED FEATURE TREES:

- *Corymbia maculata*
- *Eucalyptus grandis*
- *Eucalyptus laeliae*

### SEASONAL WILDFLOWERS:

- *Acacia stenoptera*
- *Anigozanthos humilis*
- *Anigozanthos manglesii*
- *Anigozanthos viridis*
- *Burchardia congesta*
- *Conostylis candicans*
- *Hermiandra pungens*
- *Hibbertia racemose*
- *Hibbertia stellaris*
- *Kennedia coccinea*
- *Lechnaultia floribunda*
- *Melaleuca trichophylla*
- *Orthrosanthus laxus*
- *Verticordia densiflora*



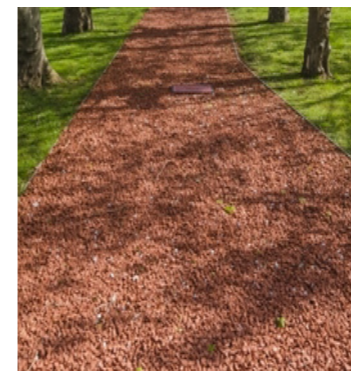
# LOOK AND FEEL



## BIORETENTION BASIN PLANTING



## COMPACTED LATERITE PLANTING



## BASIN PLANTING:

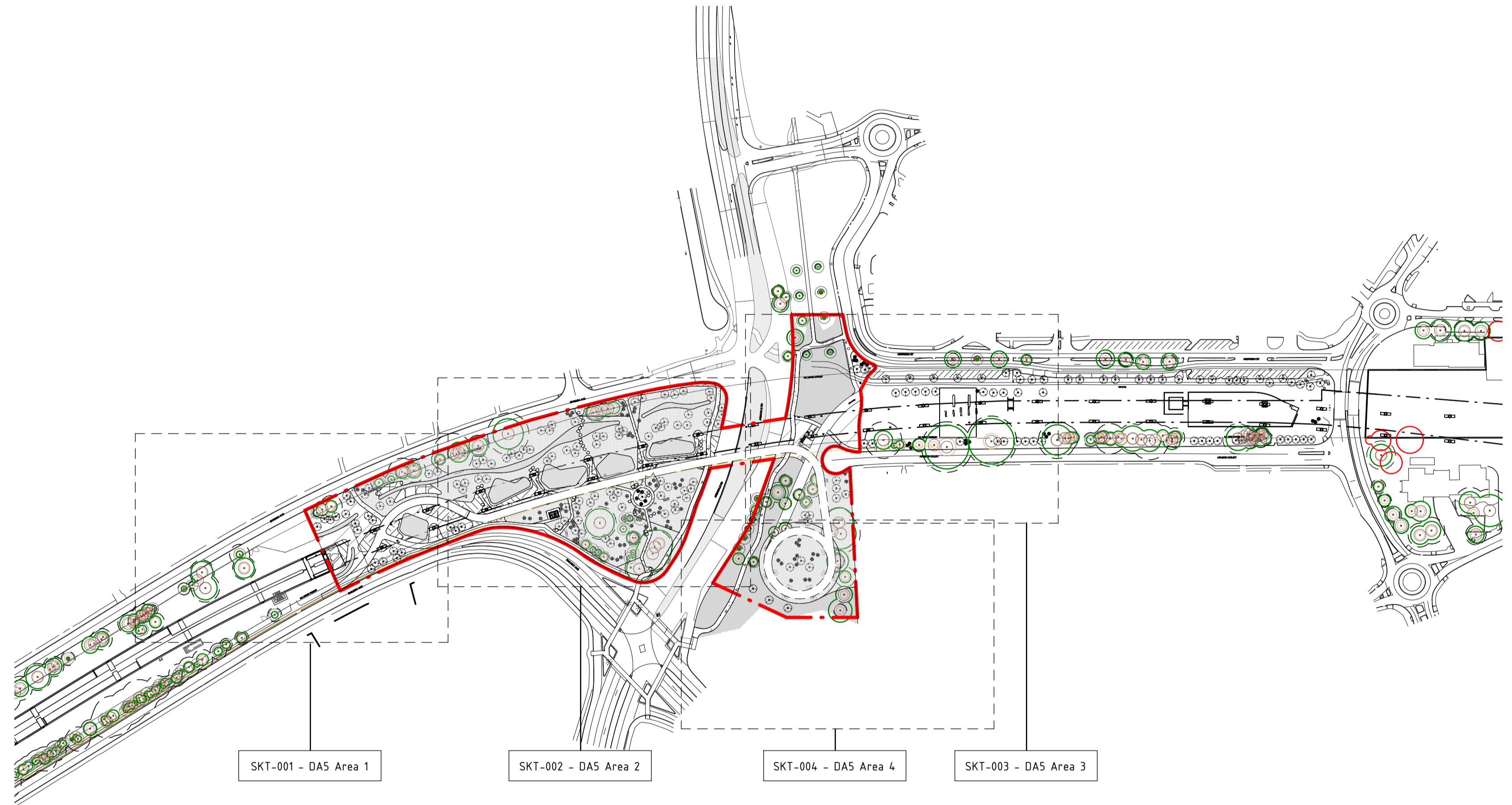
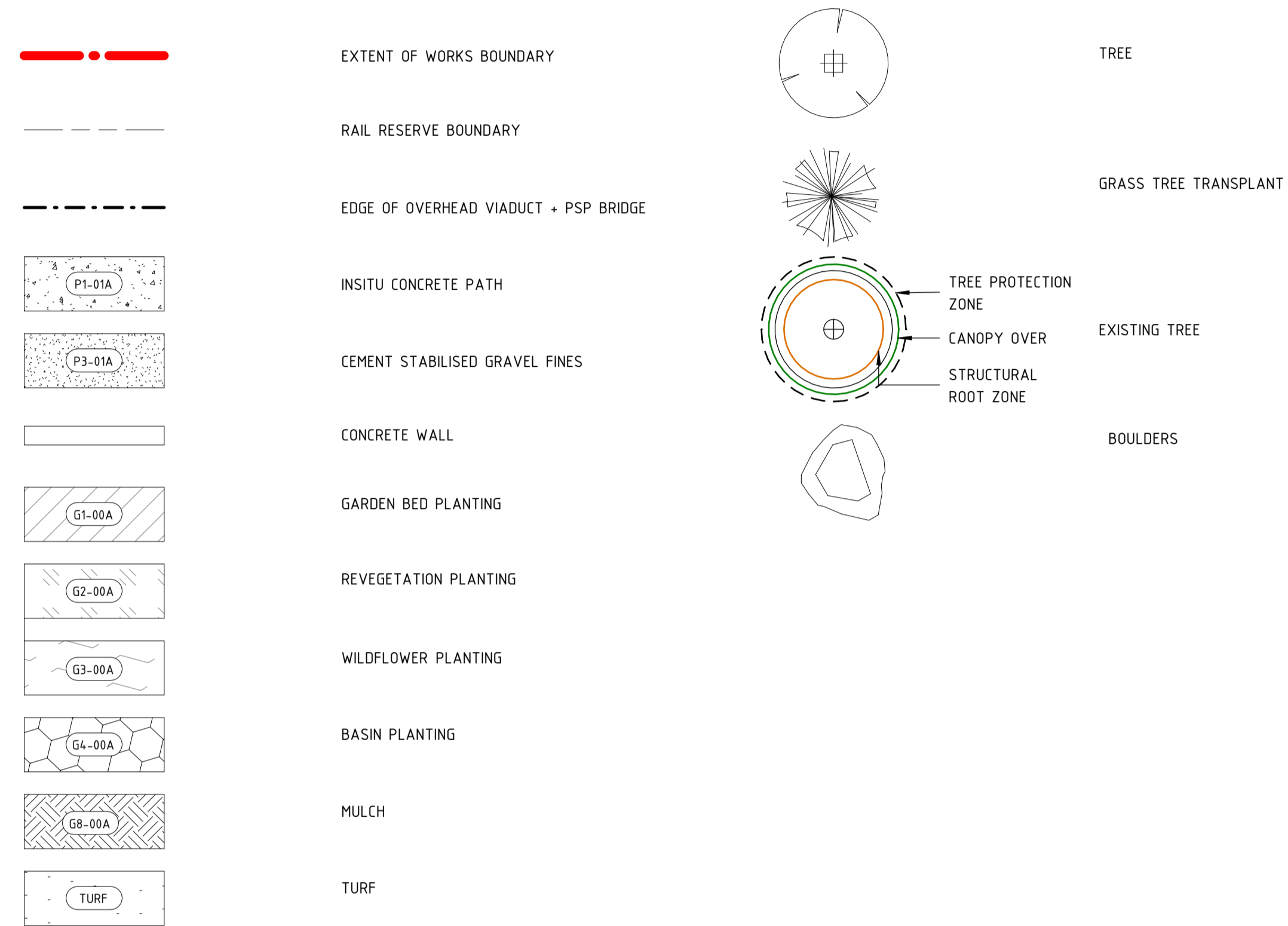
- *Baumea juncea*
- *Baumea rubiginosa*
- *Carex appressa*
- *Ficinia nodosa*
- *Juncus pallidus*
- *Juncus pauciflorus*
- *Lechenaultia biloba*
- *Lepidosperma gladiatum*
- *Meeboldina scariosa*



# BYFORD RAIL EXTENSION

## ARMADALE STATION PRECINCT - DA5

### LEGEND



### INDICATIVE PLANT LIST

TREES	WILDFLOWER PLANTING		BASIN PLANTING	REVEGETATION PLANTING		
CORYMBIA CALOPHYLLA CORYMBIA FICIFOLIA EUCALYPTUS CAMALDULENSIS EUCALYPTUS MARGINATA EUCALYPTUS PATENS EUCALYPTUS WANDOO	ACACIA APPLANATE ACACIA STENOPTERA ADENANTHOS BARBIGER ANIGOZANTHOS HUMILIS ANIGOZANTHOS MANGLESII ANIGOZANTHOS VIRIDIS BANKSIA NIVEA BILLARDIERA HETEROPHYLLA BOSSIAEA ERIOCARPA BURCHARDIA CONGESTA CALYTRIX ANGULATE CALYTRIX FRASERI CONOSTYLIS ACULEATA	CONOSTYLIS CANDICANS DIANELLA REVOLUTA HEMIANDRA PUNGENS HIBBERTIA HYPERICOIDES HIBBERTIA RACEMOSE HIBBERTIA STELLARIS KENNEDIA COCCINEA KENNEDIA PROSTRATA LECHENAULTIA FLORIBUNDA LOBELIA ANCEPS MELALEUCA TRICHOPHYLLA ORTHROSANTHUS LAXUS VERTICORDIA DENSIFLORA	BAUMEA JUNCEA BAUMEA RUBIGINOSA CAREX APPRESSA FICINIA NODOSA JUNCUS PALLIDUS JUNCUS PAUCIFLORUS LECHENAULTIA BILOBA LEPIDOSPERMA GLADIATUM MEEBOLDINA SCARIOSEA	(NATIVE SEED MIX 4.5KG/HA) ACACIA PULCHELLA ACACIA SALIGNA ADENANTHOS CYGNORUM BAUMEA JUNCEA BEAUFORTIA SQUARROSA BOSSIAEA ERIOCARPA BOSSIAEA ORNATA CONOSTYLIS ACULEATA CONOSTYLIS JUNCEA DARWINIA CITRIODORA DAVIESIA PHYSODES	ELEOCHARIS ACUTA EREMAEA PAUCIFLORA GREVILLEA DIVERSIFOLIA HAKEA LISSOCARPHA HAKEA RUSCIFOLIA HAKEA VARIA HYPOCALYMYMA ANGUSTIFOLIUM JUNCUS PALLIDUS JUNCUS SUBSECUNDUS KENNEDIA PROSTATA KUNZEA GLABRESCENS MEEBOLDINA SP.	MELALEUCA LATERITIA MELALEUCA SERIATA MELALEUCA TERETIFOLIA MELALEUCA THYMOIDES REGELIA CILIATA VERTICORDIA DENSIFLORA
<b>FEATURE TREES</b> CORYMBIA MACULATA EUCALYPTUS GRANDIS EUCALYPTUS LAELIAE						

PRINT IN COLOUR

SKETCH DESIGN

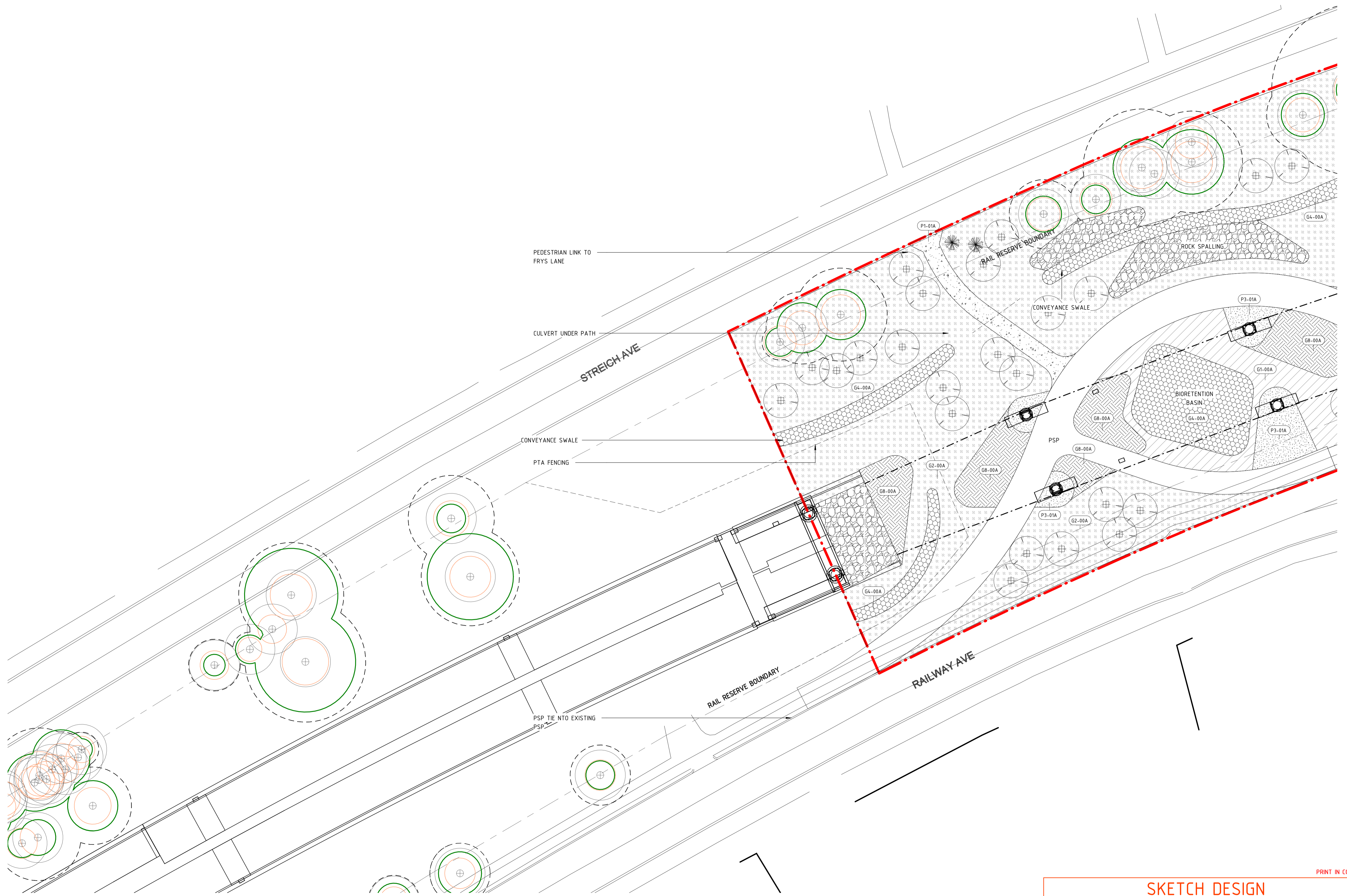
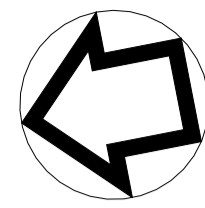
REV	DATE	ISSUE FOR DEVELOPMENT APPLICATION	DF	NR	MH	AE
A	01/02/24	AMENDMENT	DSN	DRN	CHK	APP
ORIG SIZE		0 10 20 30 40 50 100mm		This document must not be copied without PTA's written permission, and the contents thereof must not be imparted to a third party nor be used for any unauthorised purpose.		
A1		AT ORIGINAL PLOT SIZE		Contractor No: Rev: A		



REFERENCES	SCALE As indicated	DESIGNED D.FIRNS
	DATUM	DRAWN N.ROSE
	HORIZONTAL: PCG2020	CHECKED M.HARRIS
	VERTICAL: AHD71	APPROVED A.EYRES
		DATE 01/02/24

BYFORD RAIL EXTENSION ARMADALE STATION PRECINCT LANDSCAPE COVER, LEGEND & NOTES PTA Drawing No: NONE	Rev: A
--	--------





PRINT IN COLOUR

**SKETCH DESIGN**

REV	DATE	ISSUE FOR DEVELOPMENT APPLICATION	DF	NR	MH	AE
A	01/02/24	AMENDMENT	DSN	DRN	CHK	APP
ORIG SIZE						
A1		AT ORIGINAL PLOT SIZE				

This document must not be copied without PTA's written permission, and the contents thereof must not be imparted to a third party nor be used for any unauthorised purpose.

Contractor No: \_\_\_\_\_ Rev: A

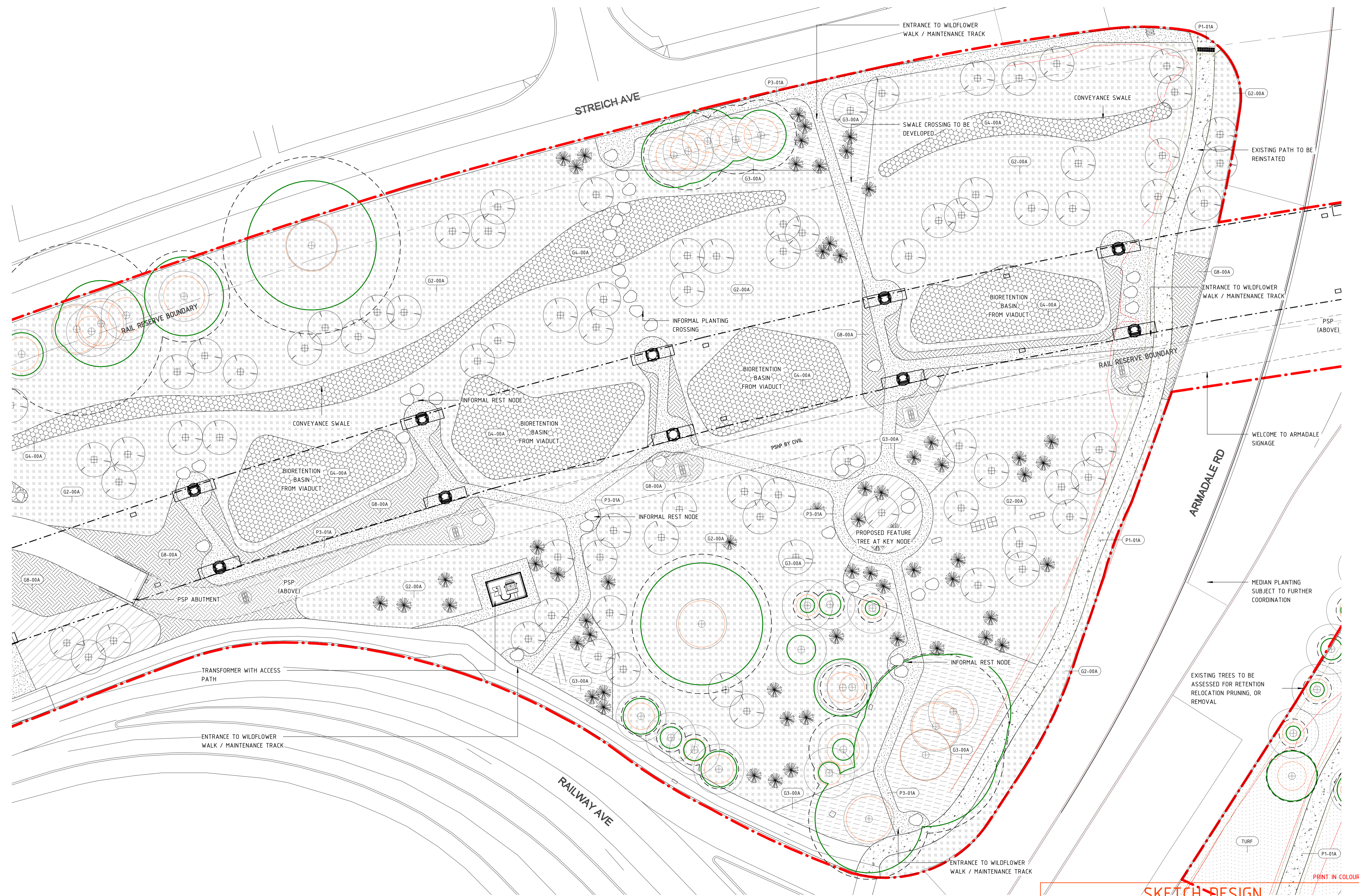
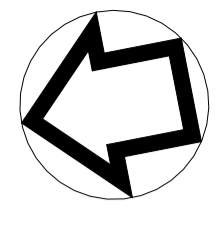
REFERENCES

SCALE	1 : 250
DATUM	HORIZONTAL: PCG2020 VERTICAL: AHD71

DESIGNED	D.FIRNS
DRAWN	N.ROSE
CHECKED	M.HARRIS
APPROVED	A.EYRES
DATE	01/02/24

**BYFORD RAIL EXTENSION**  
**ARMADALE STATION PRECINCT**  
**LANDSCAPE**  
**LANDSCAPE GENERAL ARRANGEMENT - DA5 Area 1**  
 PTA Drawing No: SKT-001 Rev: A





PRINT IN COLOUR

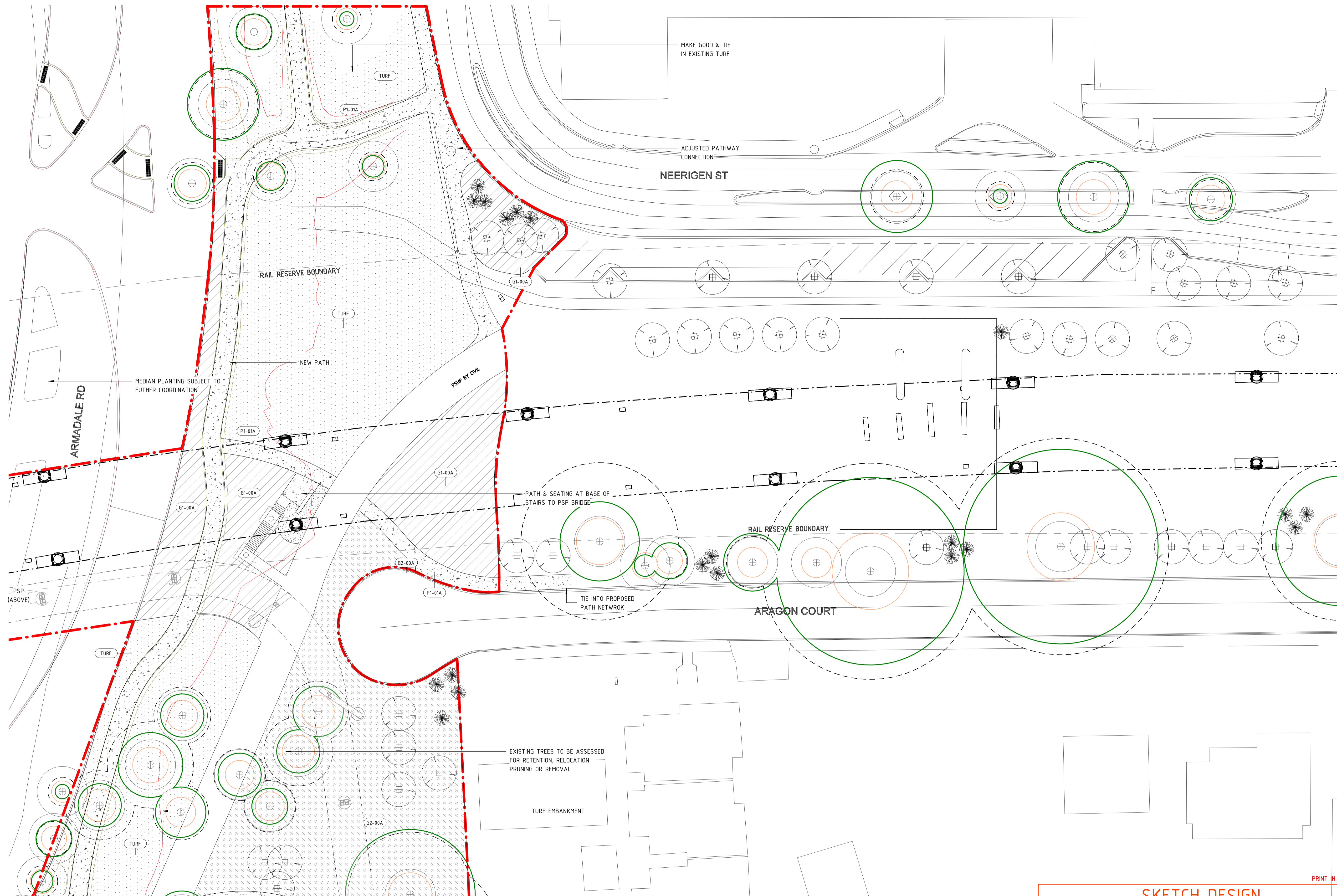
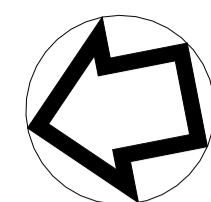
SKETCH DESIGN

REV	DATE	ISSUE FOR DEVELOPMENT APPLICATION	DF	NR	MH	AE
A	01/02/24					
AMENDMENT			DSN	DRN	CHK	APP
ORIG SIZE	0 10 20 30 40 50 100mm		This document must not be copied without PTA's written permission, and the contents thereof must not be imparted to a third party nor be used for any unauthorised purpose.			
A1	AT ORIGINAL PLOT SIZE		Contractor No: Rev: A			

REFERENCES	SCALE	DESIGNED
	1 : 250	D.FIRNS
	DATUM	DRAWN
	HORIZONTAL: PCG2020	N.ROSE
	VERTICAL: AHD71	CHECKED
		M.HARRIS
		APPROVED
		A.EYRES
		DATE
		01/02/24

	BYFORD RAIL EXTENSION
ARMADALE STATION PRECINCT	
LANDSCAPE	
LANDSCAPE GENERAL ARRANGEMENT - DA5 Area 2	
PTA Drawing No: SKT-002	Rev: A





PRINT IN COLOUR

SKETCH DESIGN

REV	DATE	ISSUE FOR DEVELOPMENT APPLICATION	DF	NR	MH	AE
A	01/02/24	AMENDMENT	DSN	DRN	CHK	APP
ORIG SIZE		AT ORIGINAL PLOT SIZE				
A1		This document must not be copied without PTA's written permission, and the contents thereof must not be imparted to a third party nor be used for any unauthorised purpose.				




Contractor No: \_\_\_\_\_ Rev: A

REFERENCES

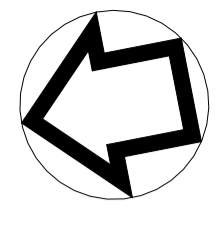
SCALE	1 : 250
DATUM	
HORIZONTAL:	PCG2020
VERTICAL:	AHD71

DESIGNED	D.FIRNS
DRAWN	N.ROSE
CHECKED	M.HARRIS
APPROVED	A.EYRES
DATE	01/02/24



BYFORD RAIL EXTENSION  
 ARMADALE STATION PRECINCT  
 LANDSCAPE  
 LANDSCAPE GENERAL ARRANGEMENT - DA5 Area 3  
 PTA Drawing No: SKT-003  
 Rev: A





PRINT IN COLOUR


SKETCH DESIGN

REV	DATE	ISSUE FOR DEVELOPMENT APPLICATION	DF	NR	MH	AE
A	01/02/24	AMENDMENT	DSN	DRN	CHK	APP
ORIG SIZE		AT ORIGINAL PLOT SIZE				
A1		This document must not be copied without PTA's written permission, and the contents thereof must not be imparted to a third party nor be used for any unauthorised purpose.				



Contractor No: \_\_\_\_\_ Rev: A

REFERENCES	SCALE	DESIGNED
	1 : 250	D.FIRNS
	DATUM	DRAWN
	HORIZONTAL: PCG2020	N.ROSE
	VERTICAL: AHD71	CHECKED
		M.HARRIS
		APPROVED
		A.EYRES
		DATE
		01/02/24



BYFORD RAIL EXTENSION

ARMADALE STATION PRECINCT

LANDSCAPE

LANDSCAPE GENERAL ARRANGEMENT - DA5 Area 4

PTA Drawing No: SKT-004

Rev: A