

LEGEND

LOCAL SCHEME RESERVES

CP	Car Park	Environmental Conservation Reserve
CE	Cemetery	Foreshore
CC	Civic and community	Drainage/waterway
CF	Cultural Facilities	Local Road
E	Education	District Distributor Road
ES	Emergency Services	Primary Distributor Road
GS	Government Services	Public Open Space
H	Heritage	Public purposes
IS	Infrastructure Services	Railways
M	Medical Services	Special purpose reserve
R	Recreational	Strategic Infrastructure
SC	Social Care Facilities	

LOCAL SCHEME ZONES

Commercial	Environmental conservation
Service Commercial	Priority agriculture
NC Neighbourhood centre	Rural
RC Regional Centre	Rural Residential
Mixed Use	Rural Smallholdings
Residential	Rural enterprise
Urban Development	Rural townsite
Light Industry	Special use
General Industry	Tourism
Industrial development	

OTHER CATEGORIES

(see scheme text for additional information)

Scheme Boundary
Local Government Boundary
Additional uses
R1 Restricted uses
SU1 Special use area
R20 R Codes
SCA1 Albany Airport Special Control Area
SCA2 Public Drinking Water Source Area
SCA3 Albany Speedway Noise Special Control Area
SCA4 Water Corporation Wastewater Treatment Plant Odour Buffer
SCA5 Spencer Park Special Control Area
SCA6 Pendeen Special Control Area Buffer
SCA7 Down Road East Special Control Area Buffer
SCA8 Down Road West Special Control Area Buffer
SCA9 Albany Port Special Control Area Buffer
SCA10-12 Coastal Erosion Risk Special Control Area
SCA13-19 Inundation Special Control Area
Oceans/Waterways

VERSION No 1



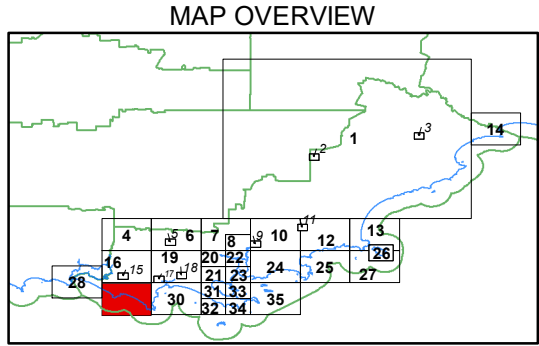
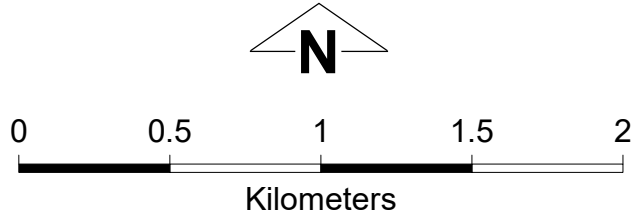
Department of Planning,
Lands and Heritage

This electronic planning map has been prepared and made available for public inspection by the Western Australian Planning Commission pursuant to section 267B of the *Planning and Development Act 2005*. Whilst all care has been taken to accurately portray the original map, spatial data can be subject to modification over time. If you wish to use a copy of this map in any proceedings, a copy certified by the Commission (or its delegates) under section 267C is evidence of the contents of the electronic map or a part of the map. If you have questions about the publication or certification of a map, or suspect any omissions or errors in this electronic planning map, please advise the Department of Planning, Lands and Heritage at spatialdata@dph.wa.gov.au

© 2024 Western Australian Land Information Authority
Location information data licensed from Western Australian Land Information Authority (WALIA) trading as Landgate.
Copyright in the location information data remains with WALIA.
WALIA does not warrant the accuracy or completeness of the location information data or its suitability for any particular purpose.

Produced by Data Analytics,
Department of Planning, Lands and Heritage.

City of Albany
Local Planning Scheme No. 2
(District Scheme)



Authorised: T.Servaas

Plot Date: 13 March 2024

G.Gazette: Tuesday, 27 February 2024

Local Planning Scheme Map No. 29 of 35
MAP: Lowlands/West Cape Howe Locality

City of Albany

Local Planning Scheme No. 2

(District Scheme)