

**LEGEND**

**REGION SCHEME RESERVES (GBRS)**

Other Regional Roads	Public Purposes
Regional Open Space	Public Purposes - Airport
Port Installations	Public Purposes - High School
Primary Regional Roads	Public Purposes - Hospital
Railways	Public Purposes - Prison
State Forests	Public Purposes - Public Utilities
Waterways	Public Purposes - Special Uses
	Public Purposes - Technical School
	Public Purposes - University

**LOCAL SCHEME RESERVES**

Civic and Community	Public Purposes
Drainage/Waterway	Cemetery
Environmental Conservation Reserve	Education
Foreshore	Emergency Services
Public Open Space	Government Services
Primary Distributor Road	Heritage
Regional Distributor Road	Infrastructure Services
District Distributor Road	Medical Services
Local Distributor Road	Railways
Local Road	Special Purpose Reserve

**LOCAL SCHEME ZONES**

Commercial	Residential
District Centre	Priority Agriculture
Neighbourhood Centre	Rural
General Industry	Rural Residential
Light Industry	Service Commercial
Strategic Industry	Special Use
Industrial Development	Tourism
Environmental Conservation	Urban Development
Private Community Purposes	

**OTHER CATEGORIES**

(see scheme text for additional information)

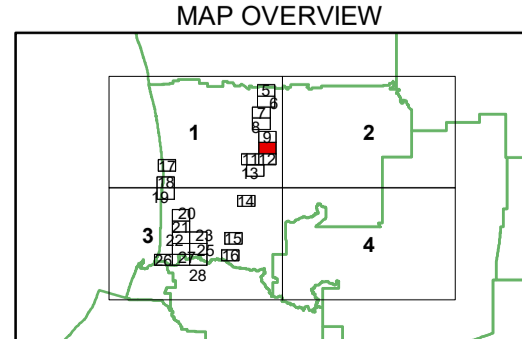
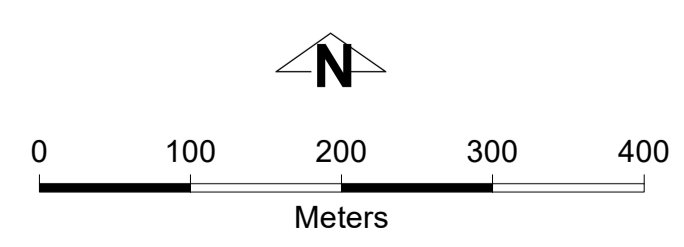
Scheme Area Boundary	
Local Government Boundary	
R20 R Codes	
A1/AR1 Additional Uses	
R1 Restricted Uses	
ASR1/AS1 Additional Site Requirements	
SU1 Special Use Area	
SCA1 Special Control Area - Flood Prone Area	
SCA2 Special Control Area - Basic Raw Material	
SCA3 Special Control Area - Public Drinking Water Source Area	
SCA4 Special Control Area - Infrastructure (Wastewater Treatment Plant Buffer)	
SCA5A Special Control Area - Environmental Protection Area (Peel-Harvey Coastal Plain Catchment)	
SCA5B Special Control Area - Environmental Protection Area (Cathedral Avenue Area)	
SCA5C Special Control Area - Environmental Protection Area (Coastal Protection Area)	
SCA5D Special Control Area - Environmental Protection Area (Coastal Management Area)	
SCA5E Special Control Area - Environmental Protection Area (Binningup South Area)	
SCA6A Special Control Area - Landscape Protection Area (Coastal Lakelands LPA)	
SCA6B Special Control Area - Landscape Protection Area (Darling Range LPA)	
SCA6C Special Control Area - Landscape Protection Area (Vegetation Protection Area)	
No Zone	

VERSION No 1

This electronic planning map has been prepared and made available for public inspection by the Western Australian Planning Commission pursuant to section 267B of the *Planning and Development Act 2005*. Whilst all care has been taken to accurately portray the original map, spatial data can be subject to modification over time. If you wish to use a copy of this map in any proceedings, a copy certified by the Commission (or its delegates) under section 267C is evidence of the contents of the electronic map or a part of the map. If you have questions about the publication or certification of a map, or suspect any omissions or errors in this electronic planning map, please advise the Department of Planning, Lands and Heritage at [spatialdata@dph.wa.gov.au](mailto:spatialdata@dph.wa.gov.au)

© 2024 Western Australian Land Information Authority  
 Location information data licensed from Western Australian Land Information Authority (WALIA) trading as Landgate.  
 Copyright in the location information data remains with WALIA. WALIA does not warrant the accuracy or completeness of the location information data or its suitability for any particular purpose.  
 Produced by Data Analytics,  
 Department of Planning, Lands and Heritage.

**Shire of Harvey**  
 Local Planning Scheme No. 2  
 (District Scheme)



Authorised: T. Servaas  
 Plot Date: 16 April 2024  
 G.Gazette: Friday, 12 April 2024

Local Planning Scheme Map No. 10 of 28  
 MAP: Harvey Townsite North

**Shire of Harvey**  
 Local Planning Scheme No. 2  
 (District Scheme)