

LEGEND

REGION SCHEME RESERVES (MRS)

Civic and Cultural	Public Purposes
Other Regional Roads	Public Purposes - Car Park
Parks and Recreation	Public Purposes - Commonwealth Government
Parks and Recreation - restricted	Public Purposes - High School
Port Installations	Public Purposes - Hospital
Primary Regional Roads	Public Purposes - Prison
Railways	Public Purposes - Special Uses
State Forests	Public Purposes - State Energy Commission
Waterways	Public Purposes - Technical School
Water Catchments	Public Purposes - University
	Public Purposes - Water Authority of WA

LOCAL SCHEME RESERVES

Lakes and Drainage	Public Purposes : Oil Pipeline
Local Road	Public Purposes : Pre-School
Parks and Recreation	Public Purposes : Primary School
Public Purposes : Civic	Public Purposes : Water Corporation
Public Purposes : Dept of Agriculture	Public Purposes : Western Power
Public Purposes : Fire Station	Public Purposes : Telstra
Public Purposes : Gas Pipeline	

LOCAL SCHEME ZONES

Development	Regional Centre
District Centre	Residential
Industry	Resource
Lakes and Drainage	Rural
Light and Service Industry	Rural Living
Local Centre	Special Use
Mixed Business	Strategic industry
Mixed Use	

OTHER CATEGORIES

(see scheme text for additional information)

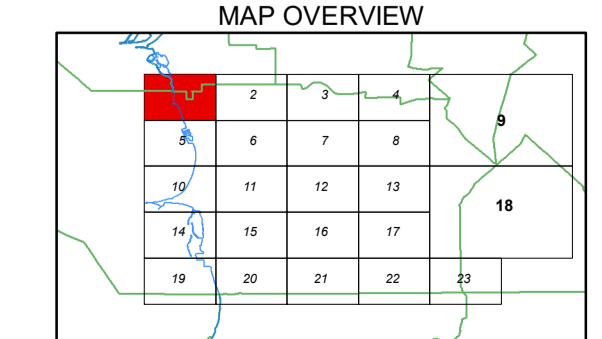
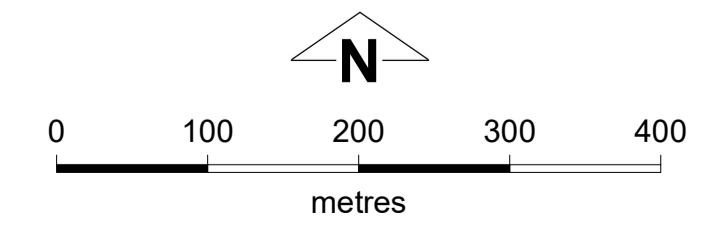
Scheme Area Boundary
Local Government Boundary
R20 R Codes
A1 Additional Uses
R1 Restricted Uses
SU1 Special Use Area
Peel-Harvey Coastal Plain Catchment Area
Building Envelope
DA1 Development Area
Development Contribution Area
JA Jandakot Airport
Heritage Place
No Zone
Waterbodies

VERSION No 1

This electronic planning map has been prepared and made available for public inspection by the Western Australian Planning Commission pursuant to section 267B of the Planning and Development Act 2005. Whilst all care has been taken to accurately portray the original map, spatial data can be subject to modification over time. If you wish to use a copy of this map in any proceedings, a copy certified by the Commission (or its delegates) under section 267C is evidence of the contents of the electronic map or a part of the map. If you have questions about the publication or certification of a map, or suspect any omissions or errors in this electronic planning map, please advise the Department of Planning, Lands and Heritage at spatialdata@dph.wa.gov.au

© 2024 Western Australian Land Information Authority
 Location information data licensed from Western Australian Land Information Authority (WALIA) trading as Landgate.
 Copyright in the location information data remains with WALIA. WALIA does not warrant the accuracy or completeness of the location information data or its suitability for any particular purpose.
 Produced by Data Analytics,
 Department of Planning, Lands and Heritage.

City of Cockburn
 Town Planning Scheme No. 3
 (District Scheme)



Authorised: T.Servaas
 Plot Date: 22 April 2024
 G.Gazette: Friday, 20 December 2002
 Town Planning Scheme Map No. 1 of 23
 MAP: Hamilton Hill Locality

City of Cockburn
 Town Planning Scheme No. 3
 (District Scheme)