

LEGEND

REGION SCHEME RESERVES (GBRS)

- | | |
|------------------------|------------------------------------|
| Other Regional Roads | Public Purposes |
| Regional Open Space | Public Purposes - Airport |
| Port Installations | Public Purposes - High School |
| Primary Regional Roads | Public Purposes - Hospital |
| Railways | Public Purposes - Prison |
| State Forests | Public Purposes - Public Utilities |
| Waterways | Public Purposes - Special Uses |
| | Public Purposes - Technical School |
| | Public Purposes - University |

LOCAL SCHEME RESERVES

- | | |
|------------------------------------|----------------------------|
| Civic and Community | Public Purposes - Cemetery |
| Drainage/Waterway | Education |
| Environmental Conservation Reserve | Emergency Services |
| Foreshore | Government Services |
| Public Open Space | Heritage |
| Primary Distributor Road | Infrastructure Services |
| Regional Distributor Road | Medical Services |
| District Distributor Road | Railways |
| Local Distributor Road | Special Purpose Reserve |
| Local Road | |

LOCAL SCHEME ZONES

- | | |
|----------------------------|----------------------|
| Commercial | Residential |
| District Centre | Priority Agriculture |
| Neighbourhood Centre | Rural |
| General Industry | Rural Residential |
| Light Industry | Service Commercial |
| Strategic Industry | Special Use |
| Industrial Development | Tourism |
| Environmental Conservation | Urban Development |
| Private Community Purposes | |

OTHER CATEGORIES

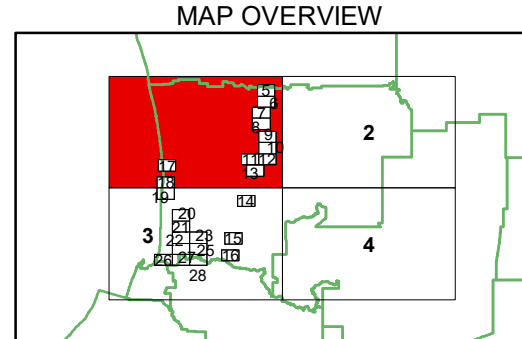
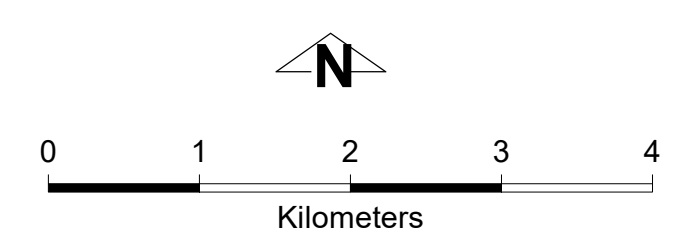
- (see scheme text for additional information)
- Scheme Area Boundary
 - Local Government Boundary
 - R20 R Codes
 - A1/AR1 Additional Uses
 - R1 Restricted Uses
 - ASR1/AS1 Additional Site Requirements
 - SU1 Special Use Area
 - SCA1 Special Control Area - Flood Prone Area
 - SCA2 Special Control Area - Basic Raw Material
 - SCA3 Special Control Area - Public Drinking Water Source Area
 - SCA4 Special Control Area - Infrastructure (Wastewater Treatment Plant Buffer)
 - SCA5A Special Control Area - Environmental Protection Area (Peel-Harvey Coastal Plain Catchment)
 - SCA5B Special Control Area - Environmental Protection Area (Cathedral Avenue Area)
 - SCA5C Special Control Area - Environmental Protection Area (Coastal Protection Area)
 - SCA5D Special Control Area - Environmental Protection Area (Coastal Management Area)
 - SCA5E Special Control Area - Environmental Protection Area (Binningup South Area)
 - SCA6A Special Control Area - Landscape Protection Area (Coastal Lakelands LPA)
 - SCA6B Special Control Area - Landscape Protection Area (Darling Range LPA)
 - SCA6C Special Control Area - Landscape Protection Area (Vegetation Protection Area)
 - No Zone

VERSION No 1

This electronic planning map has been prepared and made available for public inspection by the Western Australian Planning Commission pursuant to section 267B of the *Planning and Development Act 2005*. Whilst all care has been taken to accurately portray the original map, spatial data can be subject to modification over time. If you wish to use a copy of this map in any proceedings, a copy certified by the Commission (or its delegates) under section 267C is evidence of the contents of the electronic map or a part of the map. If you have questions about the publication or certification of a map, or suspect any omissions or errors in this electronic planning map, please advise the Department of Planning, Lands and Heritage at spatialdata@dph.wa.gov.au

© 2024 Western Australian Land Information Authority
 Location information data licensed from Western Australian Land Information Authority (WALIA) trading as Landgate.
 Copyright in the location information data remains with WALIA. WALIA does not warrant the accuracy or completeness of the location information data or its suitability for any particular purpose.
 Produced by Data Analytics,
 Department of Planning, Lands and Heritage.

Shire of Harvey
 Local Planning Scheme No. 2
 (District Scheme)



Authorised: T. Servaas
 Plot Date: 16 April 2024
 G.Gazette: Friday, 12 April 2024
 Local Planning Scheme Map No. 1 of 28
 MAP: Harvey North West

Shire of Harvey
 Local Planning Scheme No. 2
 (District Scheme)