

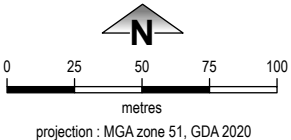
Mowanjum Layout Plan 1 - Living Area

Amendment 12



This Layout Plan does not constitute development approval. It is the responsibility of the developer to ensure that all relevant consents, approvals, licences and clearances are in place prior to commencing physical works on the site. Organisations responsible for such matters may include land owner, local government, incorporated community council, native title representative body, native title prescribed body corporate, Aboriginal Cultural Materials Committee, Environmental Protection Authority, state and federal government departments, and other relevant regulatory authorities. Go to the [PlanWA interactive planning map](#) to view Layout Plans with other spatial layers.

Layout Plan 1 endorsement	
Community	23 July 2003
Local Government	25 July 2003
Traditional Owners	23 July 2003
WAPC	23 September 2003
Amendment 12 endorsement	
WAPC	12 June 2025



[Layout Plan map-sets and background reports](#)

© 2023 Western Australian Land Information Authority Location information data licensed from Western Australian Land Information Authority (WALIA) trading as Landgate. Copyright in the location information data remains with WALIA. WALIA does not warrant the accuracy or completeness of the location information data or its suitability for any particular purpose. Base information and aerial imagery supplied by the Western Australian Land Information Authority SLIP 1447-2023-1. Cadastre, June 2025. Aerial image, April 2024. **Settlement layout lots are not derived from calculated dimensions.** Map document : MowanjumLP1_Amd12.aprx Produced by Data Analytics, Department of Planning, Lands & Heritage on behalf of the Western Australian Planning Commission. © Western Australian Planning Commission 2024

Land Use (see [Aboriginal Settlements Guideline](#))

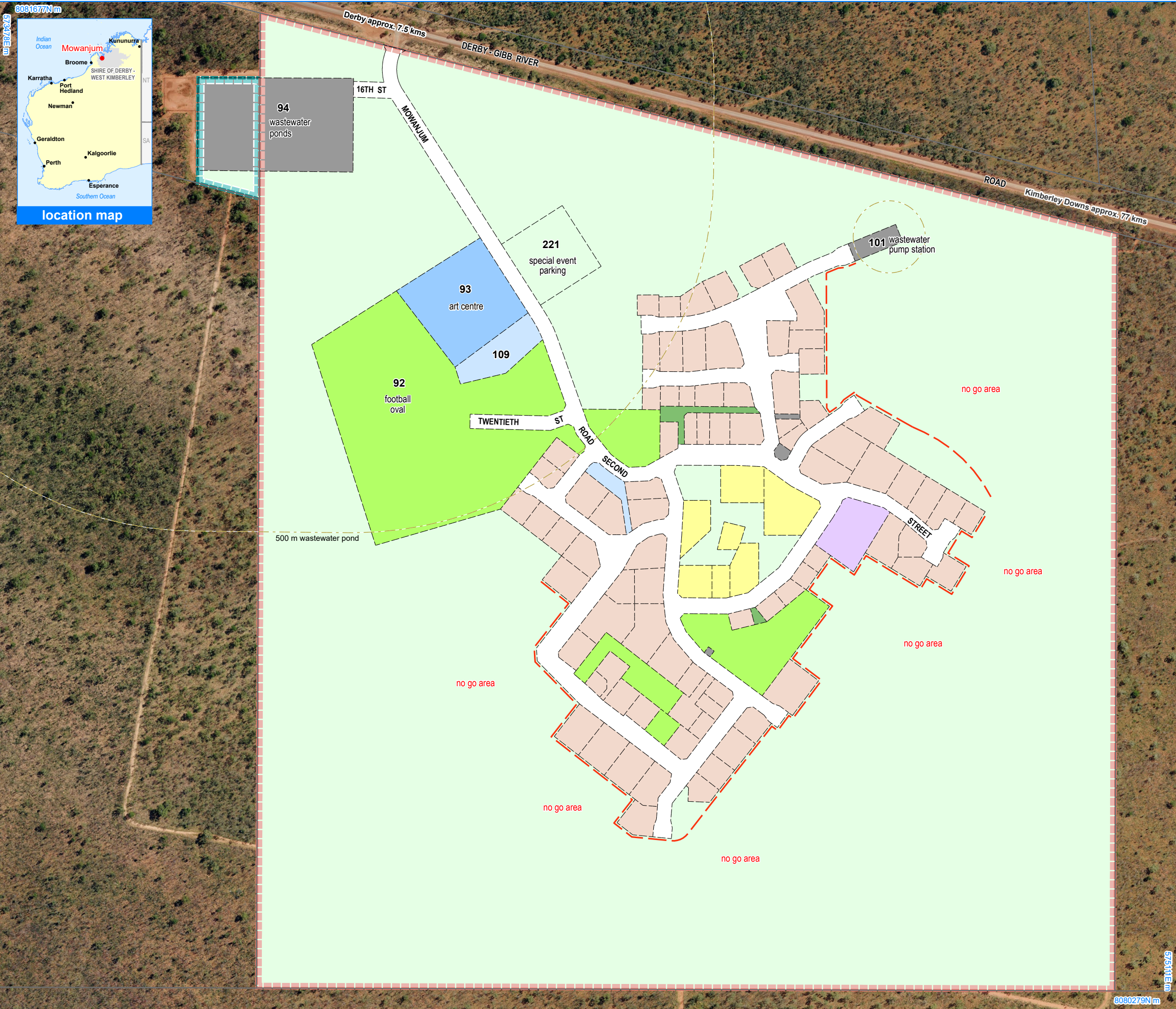
road reserve	road, essential service distribution network
residential	house, residential quarters
visitor camping	camping ground, traditional law and culture
community	child care premises, civic use, corrective institution, educational establishment, health care centre, worship building
open space	agriculture - extensive, essential service distribution network, traditional law and culture
rural	rural pursuit, agriculture - extensive, animal husbandry - intensive, agriculture - intensive, essential service distribution network
recreation	recreation, essential service distribution network
pedestrian access way	essential service distribution network, pedestrian access way
drinking water source protection area	any use permitted under the Drinking Water Source Protection Plan
waterway	agriculture - extensive, agriculture - intensive, traditional law and culture
commercial	art centre, caravan park, motel, office, service station, shop, tourism accommodation
industrial	fuel depot, industry, motor vehicle repair, storage, vehicle wrecking
public utility	electricity supply, essential service distribution network, drinking water supply, wastewater disposal, telecommunications, rubbish disposal

Land Administration

	cadastre
	lodged cadastral
	recommended settlement zone
	settlement zone
	settlement layout (SL) lot & SL-lot number

Exclusion Boundary

	industry
	no-go area
	wastewater



Mowanjum Layout Plan 1 - Context Amendment 12

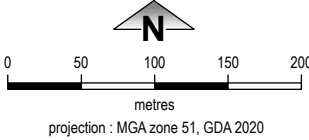
Land Administration

	cadastre
	lodged cadastre
	recommended settlement zone
	settlement zone
	settlement layout (SL) lot & SL-lot number

Exclusion Boundary

	no-go area
	wastewater

road reserve	road, essential service distribution network
residential	house, residential quarters
visitor camping	camping ground, traditional law and culture
community	child care premises, civic use, corrective institution, educational establishment, health care centre, worship building
open space	agriculture - extensive, essential service distribution network, traditional law and culture
rural	rural pursuit, agriculture - extensive, animal husbandry - intensive, agriculture - intensive, essential service distribution network
recreation	recreation, essential service distribution network
pedestrian access way	essential service distribution network, pedestrian access way
drinking water source protection area	any use permitted under the Drinking Water Source Protection Plan
waterway	agriculture - extensive, agriculture - intensive, traditional law and culture
commercial	art centre, caravan park, motel, office, service station, shop, tourism accommodation
industrial	fuel depot, industry, motor vehicle repair, storage, vehicle wrecking
public utility	electricity supply, essential service distribution network, drinking water supply, wastewater disposal, telecommunications, rubbish disposal

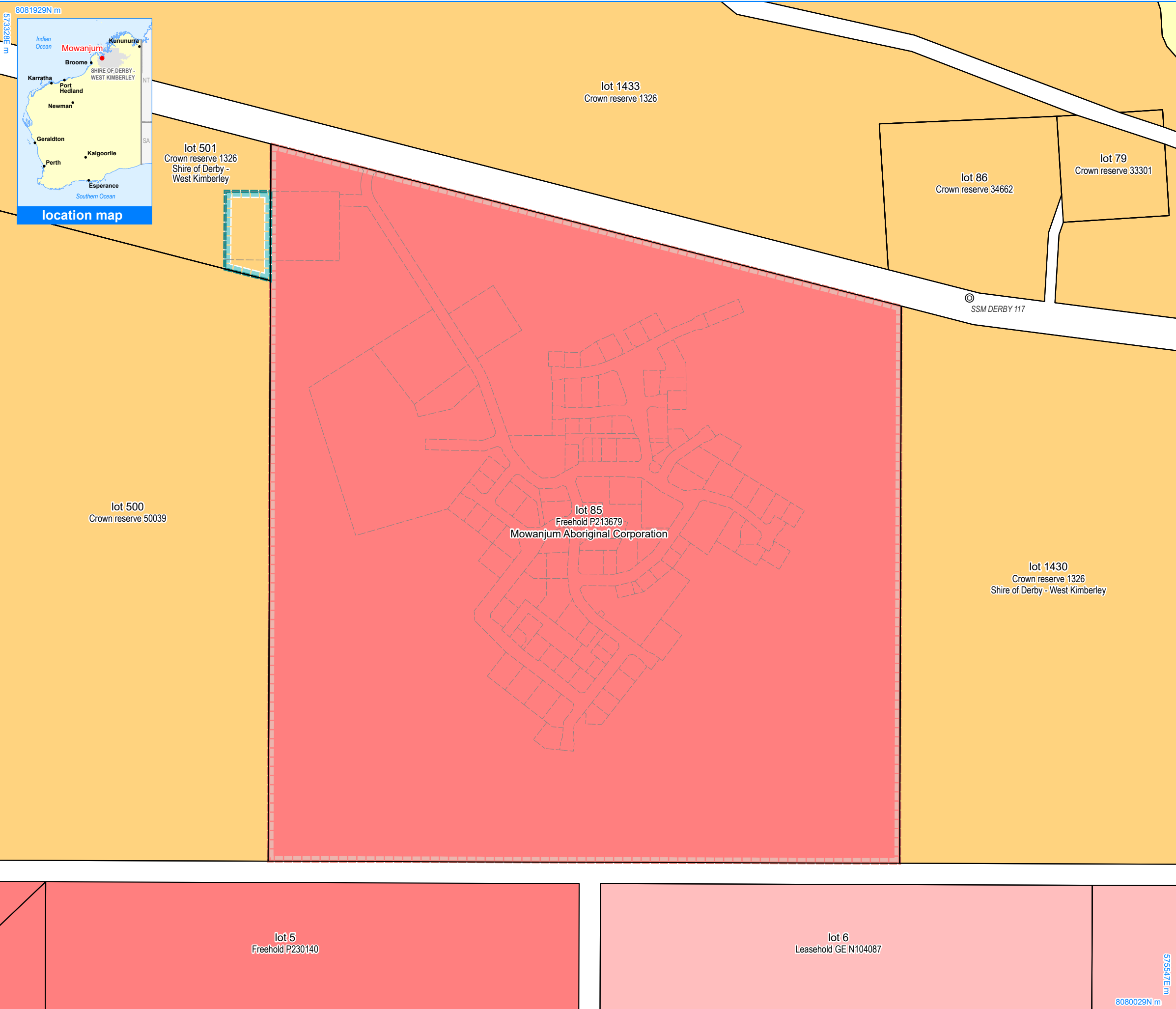


This Layout Plan does not constitute development approval. It is the responsibility of the developer to ensure that all relevant consents, approvals, licences and clearances are in place prior to commencing physical works on the site. Organisations responsible for such matters may include land owner, local government, incorporated community council, native title representative body, native title prescribed body corporate, Aboriginal Cultural Materials Committee, Environmental Protection Authority, state and federal government departments, and other relevant regulatory authorities. Go to the [PlanWA interactive planning map](#) to view Layout Plans with other spatial layers.

© 2023 Western Australian Land Information Authority Location information data licensed from Western Australian Land Information Authority (WALIA) trading as Landgate. Copyright in the location information data remains with WALIA. WALIA does not warrant the accuracy or completeness of the location information data or its suitability for any particular purpose. Base information and aerial imagery supplied by the Western Australian Land Information Authority SLIP 1447-2023-1. Cadastre date June 2025. April 2025 aerial image. Settlement layout lots are not derived from calculated dimensions. Map document : MowanjumLP1_Amd12.aprx Produced by Data Analytics, Department of Planning, Lands & Heritage on behalf of the Western Australian Planning Commission. © Western Australian Planning Commission 2023



Layout Plan 1 endorsement	
Community	23 July 2003
Local Government	25 July 2003
Traditional Owners	23 July 2003
WAPC	29 June 2004
Amendment 12 endorsement	
WAPC	12 June 2025



Mowanjum Layout Plan 1 - Land Tenure Amendment 12

Land Tenure

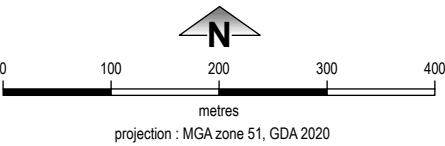
crown reserve	
crown reserve	- Aboriginal Lands Trust
Department of Biodiversity, Conservation & Attractions managed	
freehold	
leasehold	
other	
pastoral lease	
pastoral lease	- Aboriginal Lands Trust
unallocated crown land	
water reserve	

Geodetic Survey Marks

	bench mark
	standard survey mark

Land Administration

	cadastre
	lodged cadastre
	recommended settlement zone
	settlement zone
	settlement layout (SL) lot



This Layout Plan does not constitute development approval. It is the responsibility of the developer to ensure that all relevant consents, approvals, licences and clearances are in place prior to commencing physical works on the site. Organisations responsible for such matters may include land owner, local government, incorporated community council, native title representative body, native title prescribed body corporate, Aboriginal Cultural Materials Committee, Environmental Protection Authority, state and federal government departments, and other relevant regulatory authorities. Go to the [PlanWA interactive planning map](#) to view Layout Plans with other spatial layers.

© 2023 Western Australian Land Information Authority Location information data licensed from Western Australian Land Information Authority (WALIA) trading as Landgate. Copyright in the location information data remains with WALIA. WALIA does not warrant the accuracy or completeness of the location information data or its suitability for any particular purpose. Base information and aerial imagery supplied by the Western Australian Land Information Authority SLIP 1447-2023-1. Cadastre date June 2025.
Settlement layout lots are not derived from calculated dimensions.
Map document : MowanjumLP1_Amd12.aprx
Produced by Data Analytics, Department of Planning, Lands & Heritage on behalf of the Western Australian Planning Commission.
© Western Australian Planning Commission 2024



Layout Plan 1 endorsement	
Community	23 July 2003
Local Government	25 July 2003
Traditional Owners	23 July 2003
WAPC	29 June 2004
Amendment 12 endorsement	
WAPC	12 June 2025