

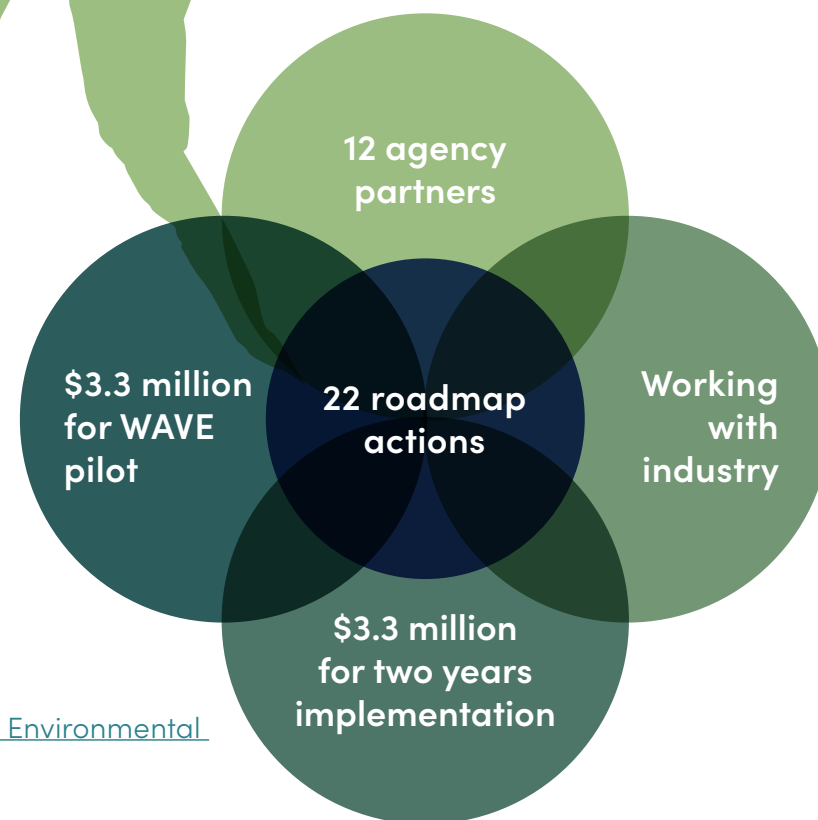


Native vegetation policy for Western Australia Implementation roadmap

Progress update Year one

Implementation of the [Native vegetation policy for Western Australia](#) began in 2023. This report provides an update on progress during the first year of the four-year [Implementation roadmap](#). The first year of implementation has seen a new team facilitate broad, economic and public policy thinking among agencies on solutions for efficient, strategic native vegetation outcomes. Foundational steps to 'define the problems' together have developed a readiness to act on opportunities outside the direct environmental remit. They form the evidence-base to prioritise exactly which policy and practice changes will best make environmental decision-making more streamlined and environmentally effective.

With this foundational work done, in the coming year stakeholders will be engaged on individual projects within the roadmap. Several projects under the roadmap's actions are delivering against the recommendations of the [Independent Review of WA Environmental Approvals](#) by Dr Paul Vogel and David McFerran.



Improvements

The Native vegetation policy – Implementation roadmap actions focus on delivering native vegetation outcomes for Western Australia through:

01 Enabling all sectors to contribute to a net gain and landscape-scale conservation and restoration.

02 Business certainty through regulatory clarity, efficiency and coordination.

03 Developing a strong, accessible evidence base for policy making, decisions and transparency.

PARTNER DELIVERY

Collaboration with our delivery partners across the policy.

Sharing knowledge across portfolios to stay connected and respond to changes in environment, technology and legislation.

Improved

POLICY

Mapped the legislative and policy framework for native vegetation protection, which is decentralised across many portfolios and agencies.

Understanding the current, decentralised system for managing native vegetation is fundamental to improving how it is used to manage cumulative impacts.

Improved

PRACTICES

Working first within the Department of Water and Environmental Regulation, we have identified updates to practices that approve clearing.

These provide a model for other agencies to improve transparency of regulatory decisions and work towards addressing cumulative impacts.

Improved

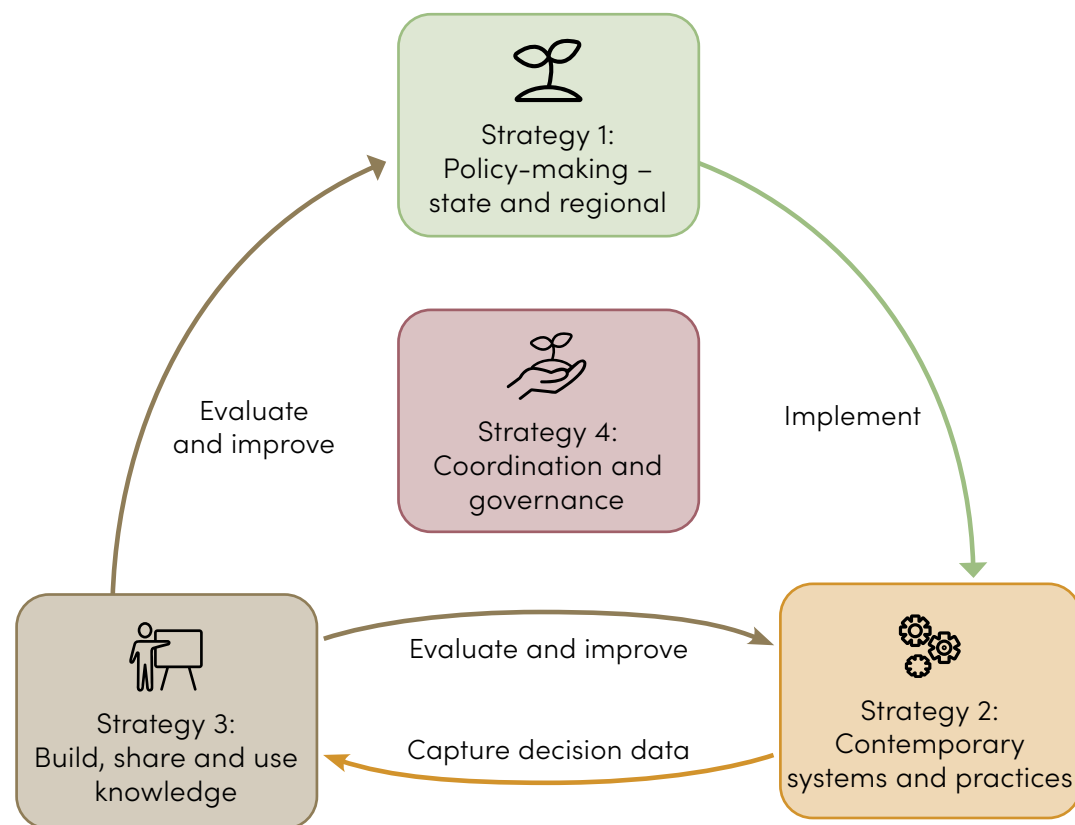
INFORMATION

Secured \$3.3 million of new funding through the 2023–24 State Budget to pilot a new future WA Vegetation Extent mapping and monitoring system known as WAVE.

Through the pilot, we will test and develop how the technology can be efficiently and robustly applied across our large and diverse state.

The future system will support informed decisions and policy making by multiple state agencies, guided by robust information on both cumulative impacts and the revegetation efforts which add balance to our natural capital.

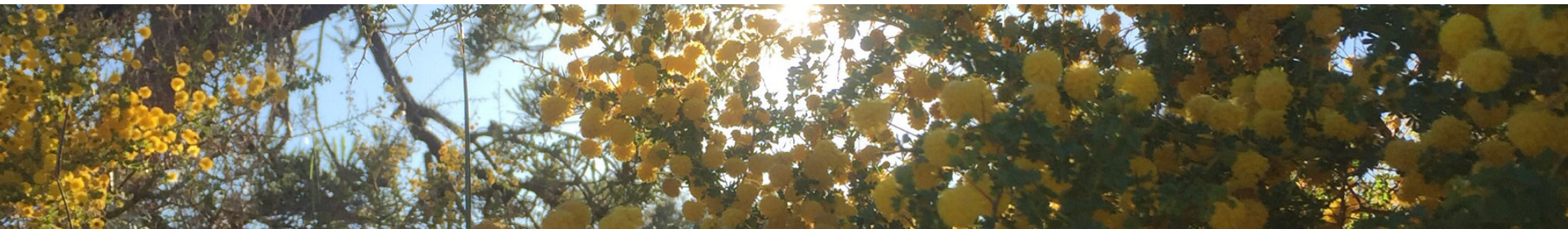
Achievements



STRATEGY 1

Policy making – state and regional

- Five agencies worked together to review the decentralised policy and decision-making arrangements for managing vegetation. This has identified opportunities for better aligning agencies' decision making through maps and guidance to be provided through regional planning.
- Analysis of environmental offsets identified the need for initiatives to build the market supply of ecological restoration projects. This will create regional and Aboriginal economic diversification opportunities.
- Wheatbelt and Perth and Peel regions were prioritised for regional planning. Updated vegetation mapping is underway to support informed decision making and improve environmental outcomes.



STRATEGY 2

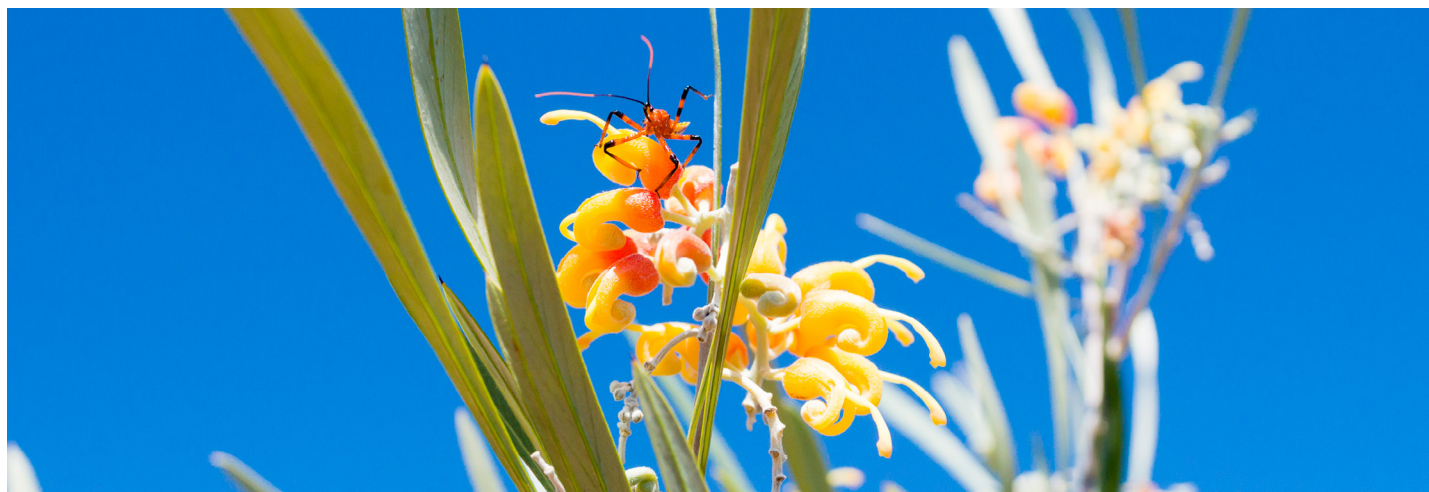
Contemporary systems and practices

- ▶ Work commenced to identify agency practice changes, towards collating maps of areas subject to approvals or restoration grants, and improving the transparency of environmental decision-making criteria, and the resulting decisions. This aligns with the [Open Data Policy](#).
- ▶ [Environment Online](#) was released in January 2024.
- ▶ The Biodiversity Information Office delivered enhancements to the [Dandjoo biodiversity data platform](#) based on stakeholder feedback to meet the need of government, industry and community. Further enhancements are planned for 2024. Progress will be reported by the [Biodiversity Information Office](#).
- ▶ A framework established by the Department of Primary Industries and Regional Development is developing robust operational standards for pastoral land condition in each of the rangelands regions. These can be used to consistently describe acceptable levels of performance, undertake objective risk assessments and inform compliance approaches.

STRATEGY 3

Build, share and use knowledge

- ▶ A new business case secured \$3.3 million to fund the three-year WA Vegetation Extent (WAVE) mapping pilot through the 2023–24 State Budget.
- ▶ The pilot will test and develop how contemporary, artificial intelligence-based ecosystem mapping performs in the WA setting. It will inform how to efficiently and permanently meet the state's need to understand and assess cumulative impacts.
- ▶ The Department of Biodiversity, Conservation and Attractions (DBCA) provided validation and feedback on the first automated mapping trial and facilitated knowledge sharing through the Land Monitor Project consortium presenting remote-sensing approaches and existing products.
- ▶ The new team is working on:
 - identifying opportunities to collaborate on mapping investment to maximise value for money
 - seeking learnings that can be applied from other states
 - starting the first small-scale mapping trials
 - updating vegetation extent mapping in the Perth and Peel and Wheatbelt regions to use now, and provide training data for the pilot.



STRATEGY 4

Coordination and governance

Native Vegetation Policy coordination and governance is supported through interagency group meetings with representatives from Department of Water and Environmental Regulation; Department of Planning, Lands and Heritage; Department of Biodiversity, Conservation and Attractions; Department of Primary Industries and Regional Development; Department of Energy, Mines, Industry Regulation and Safety and Environmental Protection Authority Services. Meetings are continuing in 2024 to enhance efficacy across agencies and support delivery of the roadmap actions.

Roadside vegetation advice

- Consultation with key stakeholders has commenced to identify the scope of roadside vegetation advice to the Minister for Environment.

Aboriginal involvement in land management

- Through its [Bushfire Centre of Excellence Cultural Fire Program](#), Department of Fire and Emergency Services (DFES) continues to support First Nations Australians, Ranger programs and Indigenous organisations to develop, implement, coordinate, and promote cultural fire and land management practices. DBCA administers the [Aboriginal Ranger Program](#) to enable Aboriginal involvement in land management, including native vegetation conservation, weed control and other land management activities, and where ranger groups are interested, ranger talks for visitors. Under the [Plan for Our Parks](#), DBCA is on target to reserve five million hectares of new parks and reserves that will be jointly managed with Traditional Owners.

Bushfire mitigation

- Supported by DFES, 86 local governments have endorsed Bushfire Risk Management Plans in place, reflecting integrated planning to address bushfire risks to human, economic, environmental and cultural assets. This includes balancing native vegetation values with community safety. DBCA works with DFES and local governments to elevate standards of prescribed burning practices.

Native vegetation and tourism

- The Department of Jobs, Tourism, Science and Innovation (JTSI) and Tourism WA promote and support building the nature-based tourism industry, leveraging bushfoods (particularly by Aboriginal tourism businesses) and wildflowers in events (including through [Regional Events Scheme funding](#)). JTSI, Tourism WA and DBCA support the objectives of the [WA Visitor Economy Strategy](#). Underpinned by sustainability, it includes initiatives to ensure conservation of natural and cultural values of parks, and to support Aboriginal cultural tourism.

► DBCA continues to:

- work with Traditional Owners to support emerging Aboriginal tourism experiences under the Culture in the Parks program
- enable over 400 licensed commercial tourism operators in parks, to broaden the range of experiences available for visitors, and help them to learn about and appreciate WA's native flora and other park values
- upgrade visitor information and park infrastructure, improving visitor access and enjoyment of native flora, while enhancing the protection of these natural assets. This includes [\\$25.9 million allocated for key tourism site upgrades across WA](#).

Urban forests and bushland

- Funded projects include the [Swan Canning Riverpark Urban Forest](#) and [Urban Greening Grants program](#) to support urban canopies, help fight climate change and establish waterwise communities in partnership with the WA Local Government Association and local governments. A commitment to developing a Perth and Peel Urban Greening strategy was [announced in February 2024](#).

Native vegetation policy implementation roadmap

Progress dashboard year 1 (to February 2024)

Status and timeframe updates

The table below shows the progress of roadmap actions following the first year of delivery. Progress is measured against timeframes extended from the original roadmap, reflecting recruitment challenges which impacted the program's start. The full four-year program and the extended timeframes have now been confirmed through the State Budget.

In line with the policy purpose, the first year focused on working with agencies to 'define the problems' in context of their roles. This has led to the updated delivery partners shown in this table.

Actions marked as closed are being progressed and reported through avenues other than the *Native vegetation policy for Western Australia*.

Status	Action	Action heading	Lead and partners (original, published in 2022 roadmap)	Lead and partners (updated)	Timeframe (updated)
In progress – on track	1.1	Policy framework review	DWER DBCA, DEMIRS, DPIRD, DPLHd	DWER Via NVP interagency group: DBCA, DEMIRS, DPIRD, DPLH	2023–ongoing
In progress – on track	1.2	Environmental offsets: strategic outcomes	DWER	DWER Via NVP interagency group: DBCA, DEMIRS, DPIRD, DPLH	(a) Closed (b) 2026
In progress – on track	1.3	Policy options to support net gain	(a) DWER (b) DWER , DBCA, DPIRD	DWER Via NVP interagency group: DBCA, DEMIRS, DPIRD, DPLH	(a) Closed (b) 2024
In progress – on track	1.4	Regional planning prioritisation and scoping	DWER DBCA, DEMIRS, DPIRD, DPC, DPLH	DWER Via NVP interagency group: DBCA, DEMIRS, DPIRD, DPLH, DPC, JTSI, DoT, MRWA	2027
In progress – on track	1.5	Regional planning – Wheatbelt	(a) DWER , DBCA (b) DWER , RSC, DoT, MRWA, DBCA, DPIRD (c) DPIRD , DBCA, DWER (d) DWER , DBCA, DPIRD, DPLH, MRWA	DWER DBCA, DPIRD	2027
Closed	1.6	Silviculture interagency group	DWER DBCA, DFES, FPC, DPLH	DWER DBCA	

Status	Action	Action heading	Lead and partners (original, published in 2022 roadmap)	Lead and partners (updated)	Timeframe (updated)
In progress – on track	1.7	Regional planning – Perth and Peel	N/A – new action	DWER DBCA, DPLH	2027
In progress – on track	2.1–2.3 and 2.4(c)	Contemporary systems and practice	2.1, 2.3, 2.4(c) – DWER, DBCA, DEMIRS, DPLH/ WAPC, DPIRD 2.2 – as above + DFES	DWER Via NVP interagency group: DBCA, DEMIRS, DPIRD, DPLH	2027
Closed	2.4(a)	Digital systems	DWER	DWER	Closed
Closed	2.4(b)	Digital systems	DBCA	DBCA	Closed
In progress – on track	2.5	Regulatory business improvement – Clearing permits	DWER DEMIRS	DWER DEMIRS	2027
In progress – on track	2.6	Regulatory business improvement – Pastoral lands	PLB/DPLH DPIRD	PLB/DPLH DPIRD	2027
In progress – on track	3.1– 3.3	Native vegetation extent, condition and type mapping	3.1(a) DWER , DBCA, Landgate, DPIRD, DPLH, DFES, DEMIRS 3.1(b) DWER , DBCA 3.2(a) DPIRD 3.2(b) DWER , DPIRD, DBCA 3.3(a) DWER , DEMIRS 3.3(b) DBCA , DWER	DWER DBCA, Landgate, DPIRD, DPLH, DFES, DEMIRS	2027
In progress – on track	4.1	Roadside vegetation advice	DWER	DWER	2023–ongoing
In progress – on track	4.2	Aboriginal involvement in land management	DBCA, DFES	DBCA, DFES	2023–2027
In progress – on track	4.3	Bushfire mitigation	DBCA, DFES	DBCA, DFES	2023–2027
In progress – on track	4.4	Native vegetation and tourism	JTSI , DBCA	JTSI (Tourism WA) DBCA	2023–2027
In progress – on track	4.5	Urban forests and bushland	DBCA, DPLH	DBCA, WAPC/DPLH, DWER WALGA	2023–2027
In progress – on track	4.6–4.7	Policy governance	DWER SOG	DWER Via NVP interagency group: DBCA, DEMIRS, DPIRD, DPLH	2023 to 2027
In progress – on track	4.6–4.7	Policy governance	DWER SOG	DWER Via NVP interagency group: DBCA, DEMIRS, DPIRD, DPLH	2023 to 2027



Shortened forms	Names
DBCA	Department of Biodiversity, Conservation and Attractions
DEMIRS	Department of Energy, Mines, Industry Regulation and Safety
DFES	Department of Fire and Emergency Services
DoT	Department of Transport
DPC	Department of the Premier and Cabinet
DPIRD	Department of Primary Industries and Regional Development
DPLH	Department of Planning, Lands and Heritage
DWER	Department of Water and Environmental Regulation
EPA Services	Environmental Protection Authority Services (DWER)
FPC	Forest Products Commission
JTSI	Department of Jobs, Science, Tourism and Innovation
MRWA	Main Roads Western Australia
NVP	Native Vegetation Policy
PLB	Pastoral Lands Board
RSC	Road Safety Commission
SOG	Senior Officers' Group
WALGA	Western Australian Local Government Association
WAPC	Western Australian Planning Commission

Department of Water and Environmental Regulation

8 Davidson Terrace, JOONDALUP WA 6027 | Locked Bag 10, Joondalup DC JOONDALUP WA 6919 | Phone: +61 8 6364 7000 | Fax: +61 8 6364 7001 | Email: nvs@dwer.wa.gov.au | www.wa.gov.au/dwer