

**Forest Products Commission**  
**Initial Fire Response Map**  
**Boddington 2 Plantation**  
 Map 1 of 1  
 SHIRE OF BODDINGTON

DBCA District: PERTH HILLS  
 FPC Fire Duty Officer: 9725 5288



- FPC Points of Interest**
- Phone Reception
  - Shed
  - Water Point
  - External Gate
  - External Gate (Locked)
  - Helipad
  - Distribution Overhead Powerlines (WP-031)
  - Power
  - FPC Lines of Interest
  - Access Track

- Roads (LGATE-012)**
- Minor Road (Sealed)
  - Minor Road (Unsealed)
  - Other
- Tenure (LGATE-226)**
- Tenure (LGATE-226)
  - Medium Scale Topo Water (Line) (LGATE-018)
  - Medium Scale Topo Water (Polygon) (LGATE-016)
  - Water Body

Local Government Authority (LGATE-233)  
 Operational Fire Breaks

- Fire Break (6m)
- Fire Break (10m)
- Fire Break (15m)

Surrounding FPC Plantations

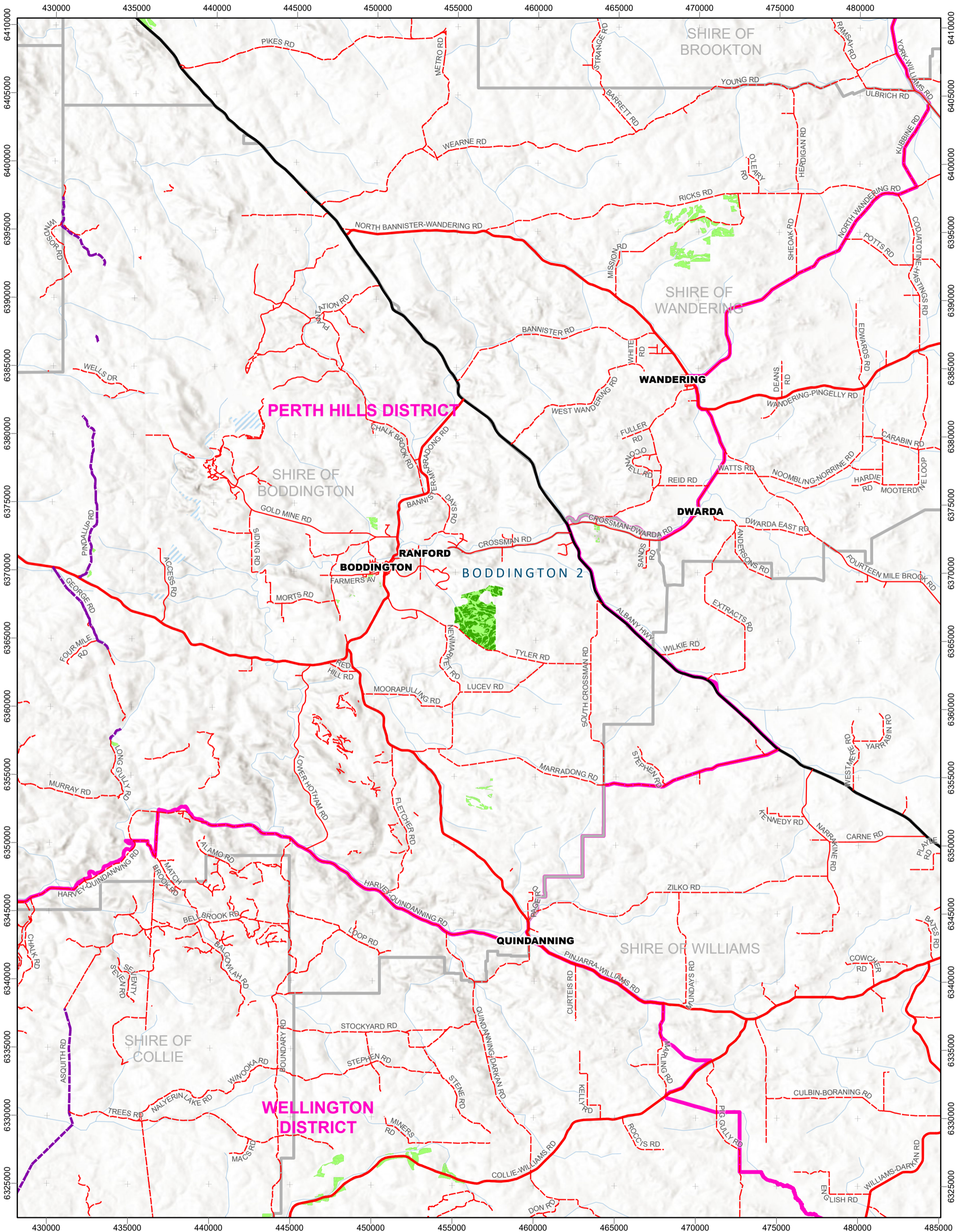
- Softwood
- FPC Plantations
- Softwood
- Cannister Maps Index - Portrait
- DBCA District Boundaries (DBCA-023)

28 Jan 2025 01:37 PM

The Forest Products Commission does not guarantee that this map is without flaw of any kind and disclaims all liability for error, loss or other consequence which may arise from relying on any information depicted.

© 2025 Western Australian Land Information Authority

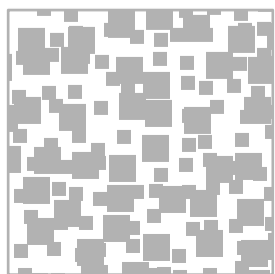
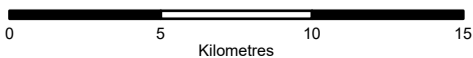
# In case of emergency, Dial 000



## Forest Products Commission Initial Fire Response Navigation Map

**Boddington 2 Plantation**

FPC Fire Duty Officer: 9725 5288



28 Jan 2025 01:44 PM

The Forest Products Commission does not guarantee that this map is without flaw of any kind and disclaims all liability for error, loss or other consequence which may arise from relying on any information depicted.

© 2025 Western Australian Land Information Authority



**fpc** Forest Products Commission