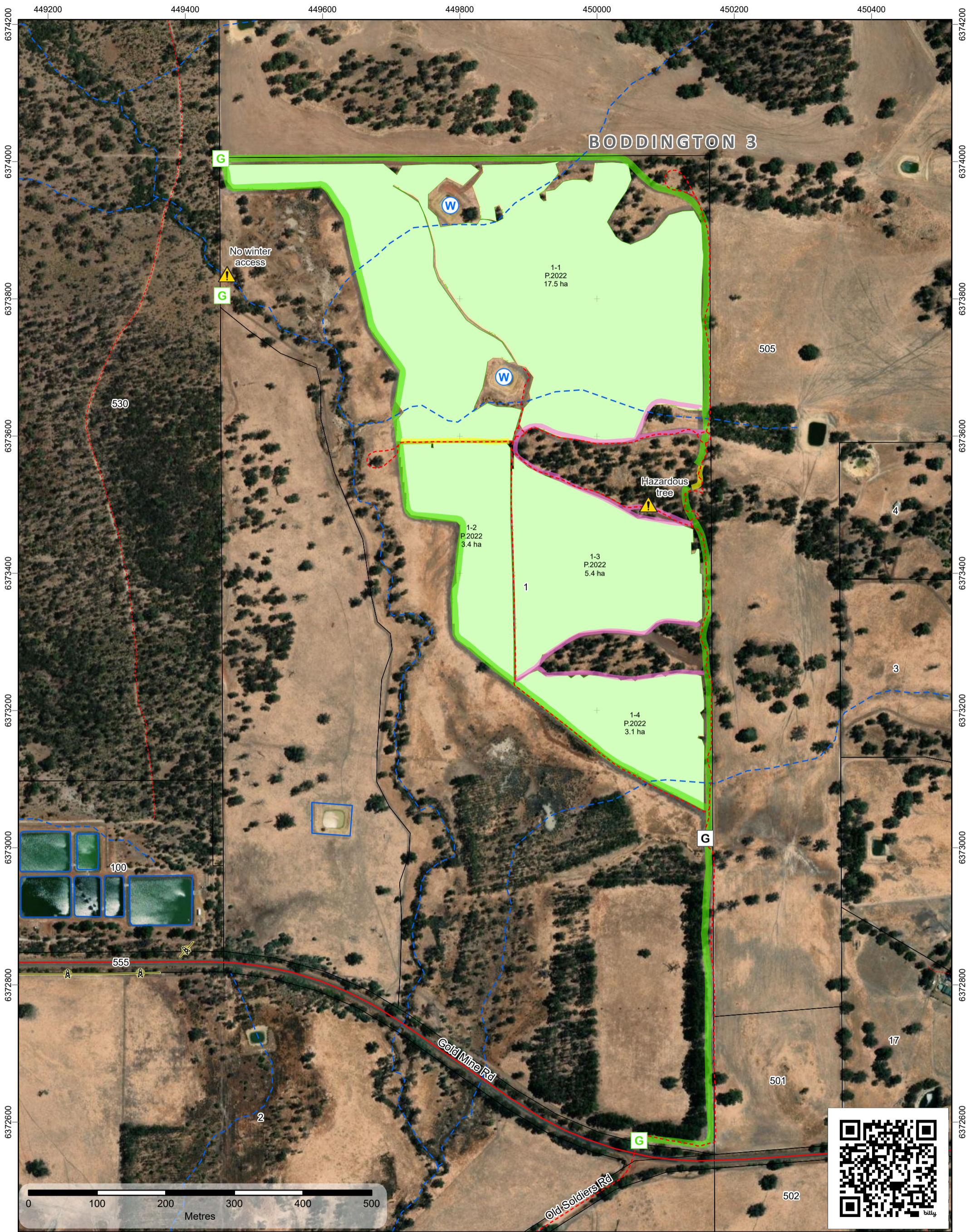


In case of emergency, Dial 000

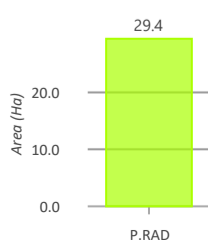


**Forest Products Commission  
Initial Fire Response Map**

**Boddington 3 Plantation**

Map 1 of 1  
SHIRE OF BODDINGTON

DBCA District: PERTH HILLS  
FPC Fire Duty Officer: 9725 5288



Softwood

- FPC Points of Interest**
- Water Point
  - External Gate
  - Hazard
  - Internal Gate
  - Distribution Overhead Powerlines (WP-031)
  - FPC Lines of Interest**
  - Access Track

- Roads (LGATE-012)**
- Minor Road (Sealed)
  - Minor Road (Unsealed)
  - Track (Unsealed)
  - Other
- Tenure (LGATE-226)**
- Tenure (LGATE-226)
  - Medium Scale Topo Water (Line) (LGATE-018)
  - Medium Scale Topo Water (Polygon) (LGATE-016)
  - Water Body

- Local Government Authority (LGATE-233)**
- Operational Fire Breaks**
- Fire Break (6m)
  - Fire Break (10m)
  - Fire Break (15m)
- Surrounding FPC Plantations**
- Softwood
  - FPC Plantations
  - Softwood
  - Cannister Maps Index - Portrait
  - DBCA District Boundaries (DBCA-023)

10 Apr 2025 10:42 AM

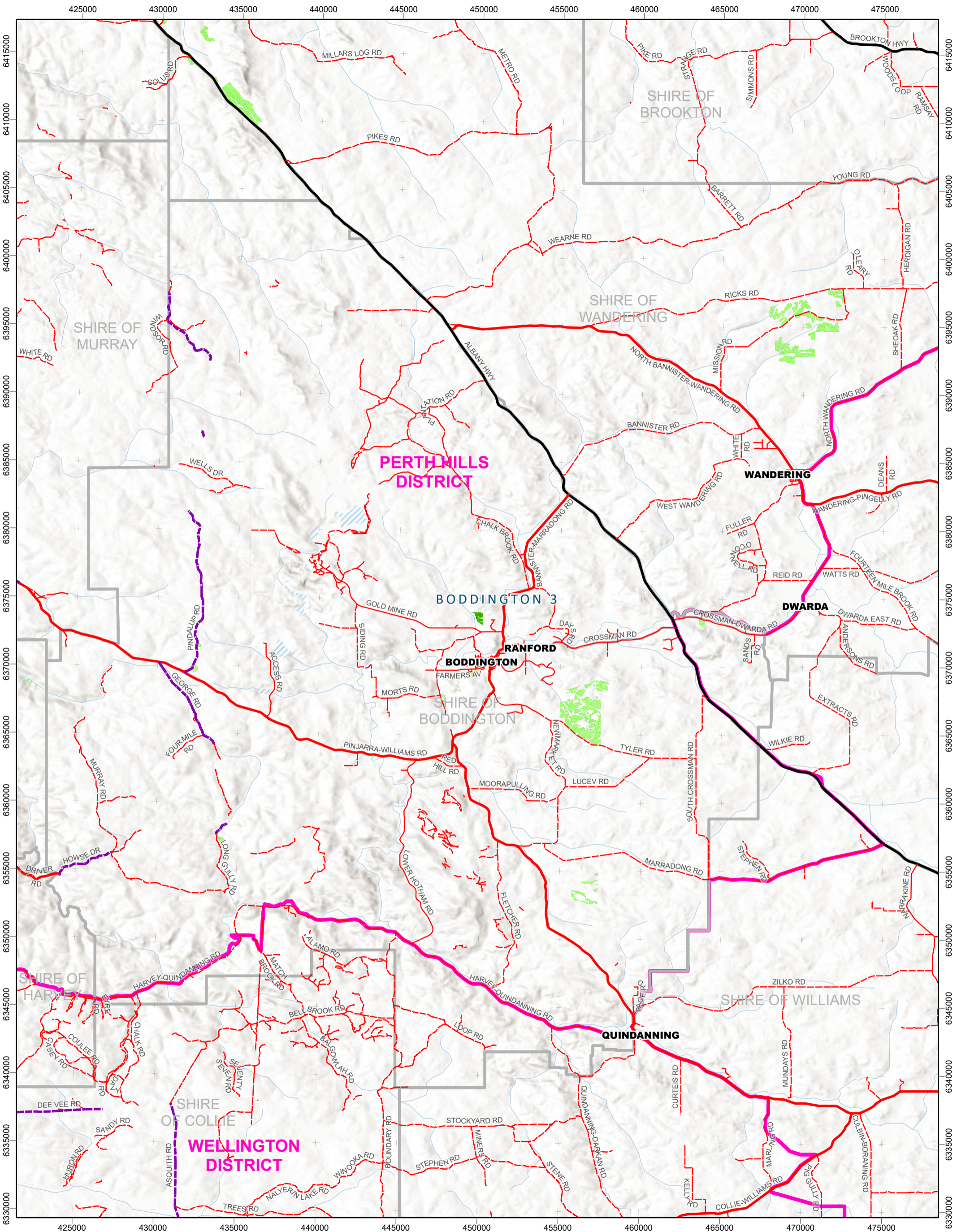
The Forest Products Commission does not guarantee that this map is without flaw of any kind and disclaims all liability for error, loss or other consequence which may arise from relying on any information depicted.

© 2025 Western Australian Land Information Authority



Last template update by GIS Team: 08/09/2025

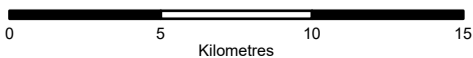
In case of emergency, Dial 000



Forest Products Commission  
Initial Fire Response  
Navigation Map

**Boddington 3 Plantation**

FPC Fire Duty Officer: 9725 5288



10 Apr 2025 09:04 AM

The Forest Products Commission does not guarantee that this map is without flaw of any kind and disclaims all liability for error, loss or other consequence which may arise from relying on any information depicted.

© 2025 Western Australian Land Information Authority



**fpc** Forest Products Commission

Last template update by GIS Team: 08/04/2025