

In case of emergency, Dial 000

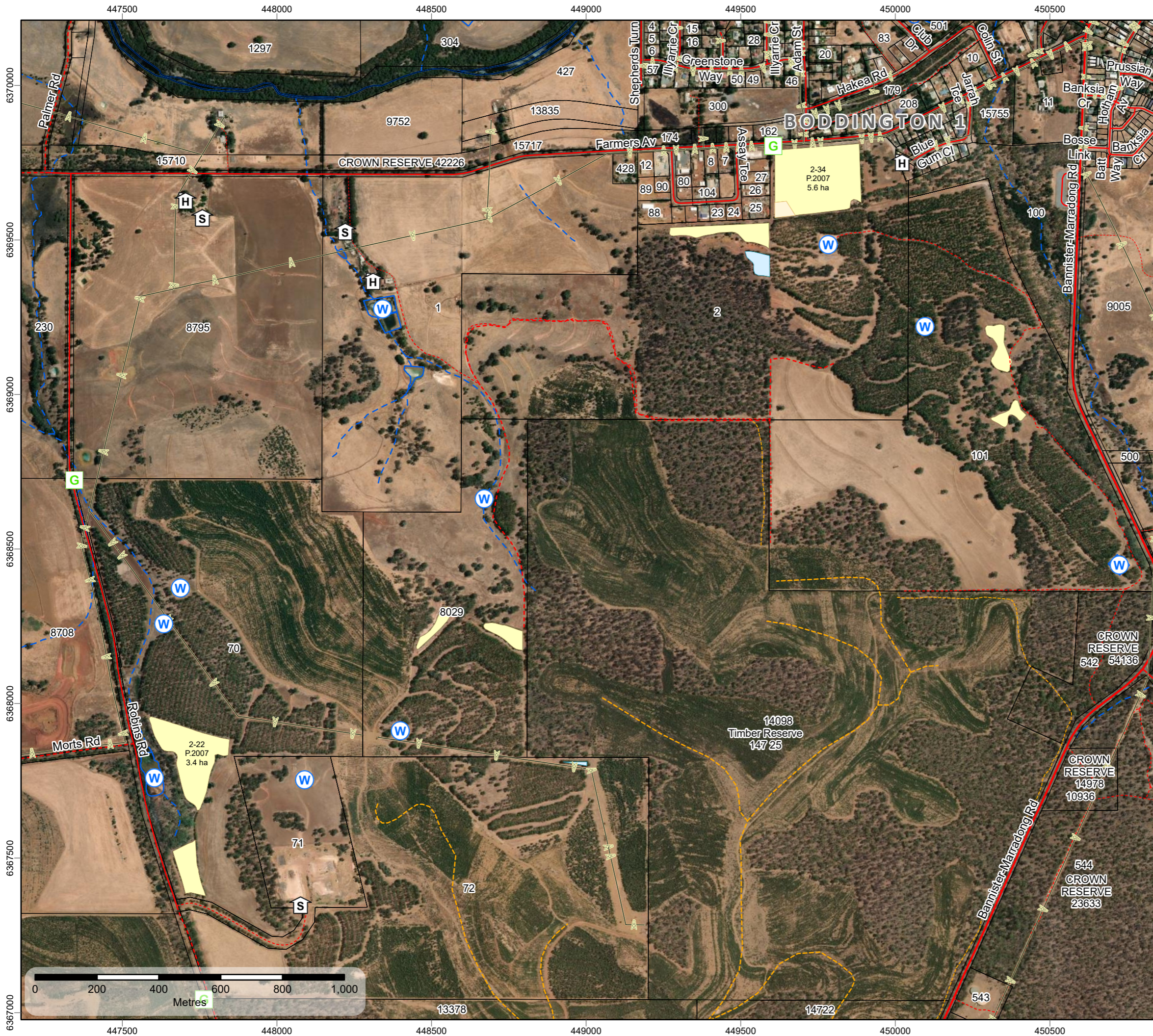
# Forest Products Commission Initial Fire Response Map

## Boddington 1 Plantation

Map 1 of 1  
SHIRE OF BODDINGTON

DBCA District: PERTH HILLS

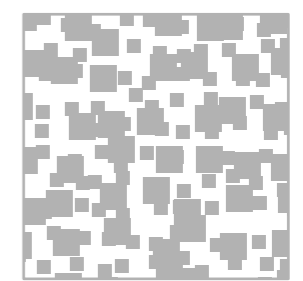
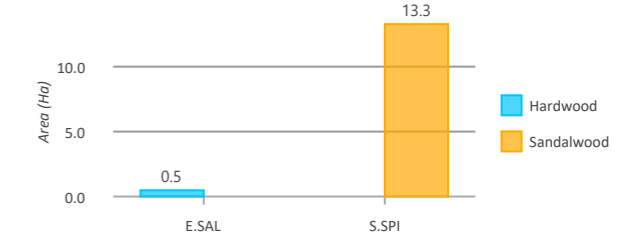
FPC Fire Duty Officer: 9725 5288



### LEGEND

- |   |   |
|---|---|
| FPC Points of Interest                    | Tenure (LGATE-226)                            |
| Symbology Expression                      | Tenure (LGATE-226)                            |
| Shed                                      | Medium Scale Topo Water (Line) (LGATE-018)    |
| Water Point                               | Major River                                   |
| External Gate                             | Minor River                                   |
| House                                     | Medium Scale Topo Water (Polygon) (LGATE-016) |
| Distribution Overhead Powerlines (WP-031) | Water Body                                    |
| Power                                     | Local Government Authority (LGATE-233)        |
| FPC Lines of Interest                     | Surrounding FPC Plantations                   |
| Access Track                              | Hardwood                                      |
| Roads (LGATE-012)                         | Sandalwood                                    |
| Main Road (Sealed)                        | Fallow  |
| Minor Road (Sealed)                       | FPC Plantations                               |
| Minor Road (Unsealed)                     | Hardwood                                      |
| Track (Unsealed)                          | Sandalwood                                    |
| Other                                     | Fallow  |
| Roads (LGATE-134)                         | Cannister Maps Index - Landscape              |
| Forestry Road (Unsealed)                  | DBCA District Boundaries (DBCA-023)           |
| Forestry Track (Unsealed)                 |   |

### HECTARES



28 Jan 2025 01:10 PM

The Forest Products Commission does not guarantee that this map is without flaw of any kind and disclaims all liability for error, loss or other consequence which may arise from relying on any information depicted.

© 2025 Western Australian Land Information Authority

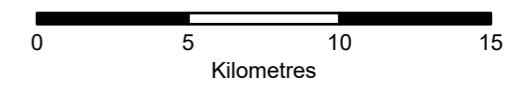
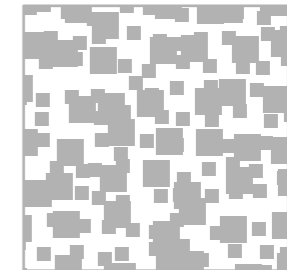
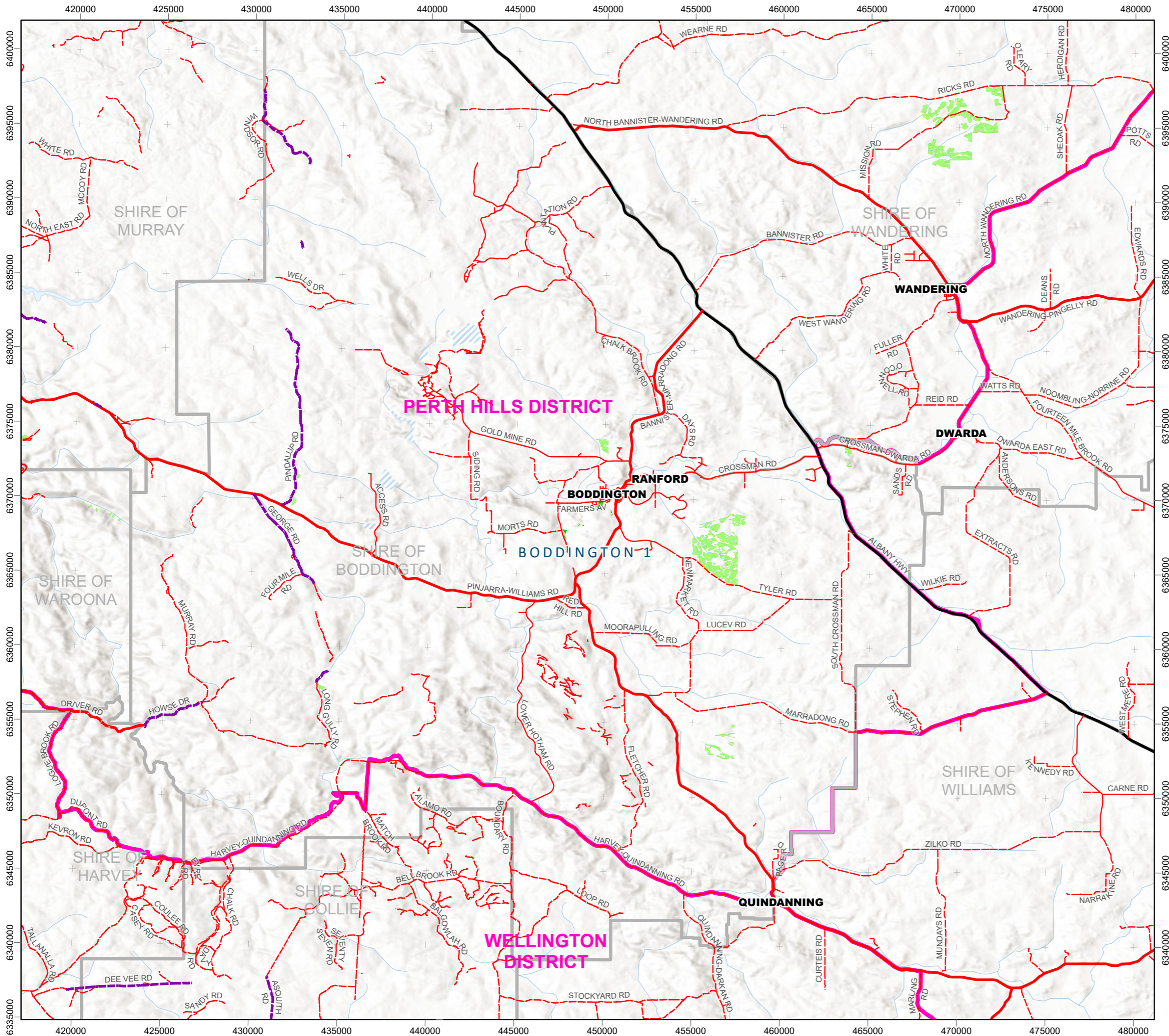


**In case of emergency, Dial 000**

# Forest Products Commission Initial Fire Response Navigation Map

**Boddington 1 Plantation**

**FPC Fire Duty Officer: 9725 5288**



The Forest Products Commission does not guarantee that this map is without flaw of any kind and disclaims all liability for error, loss or other consequence which may arise from relying on any information depicted.

28 Jan 2025 01:28 PM

© 2025 Western Australian Land Information Authority

