

ENDORSEMENT

This structure plan is prepared under the provisions of the Shire of Capel  
Local Planning Scheme No. 8.

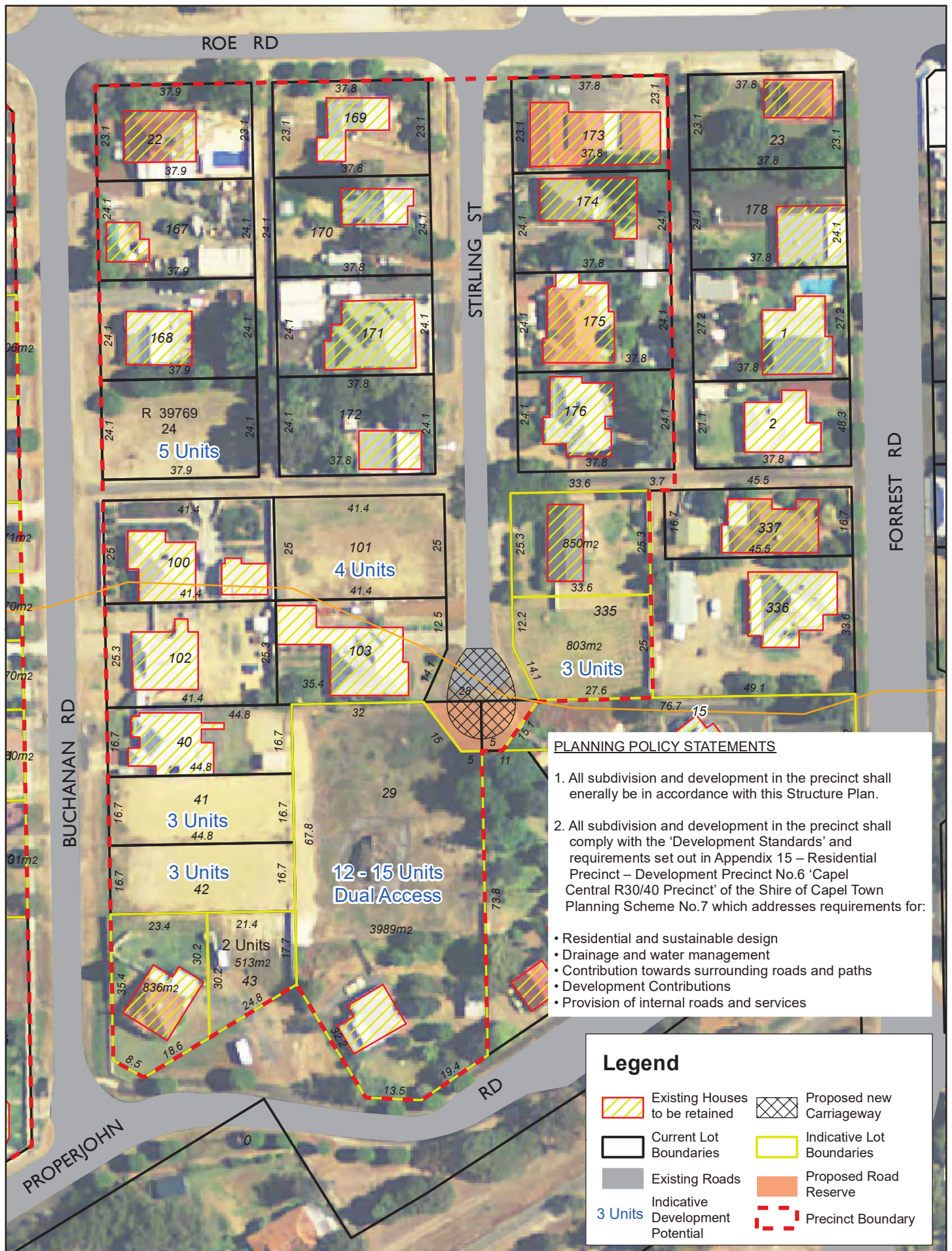
IT IS CERTIFIED THAT THIS STRUCTURE PLAN WAS APPROVED BY RESOLUTION OF THE  
WESTERN AUSTRALIAN PLANNING COMMISSION ON:

**21 DECEMBER 2011**

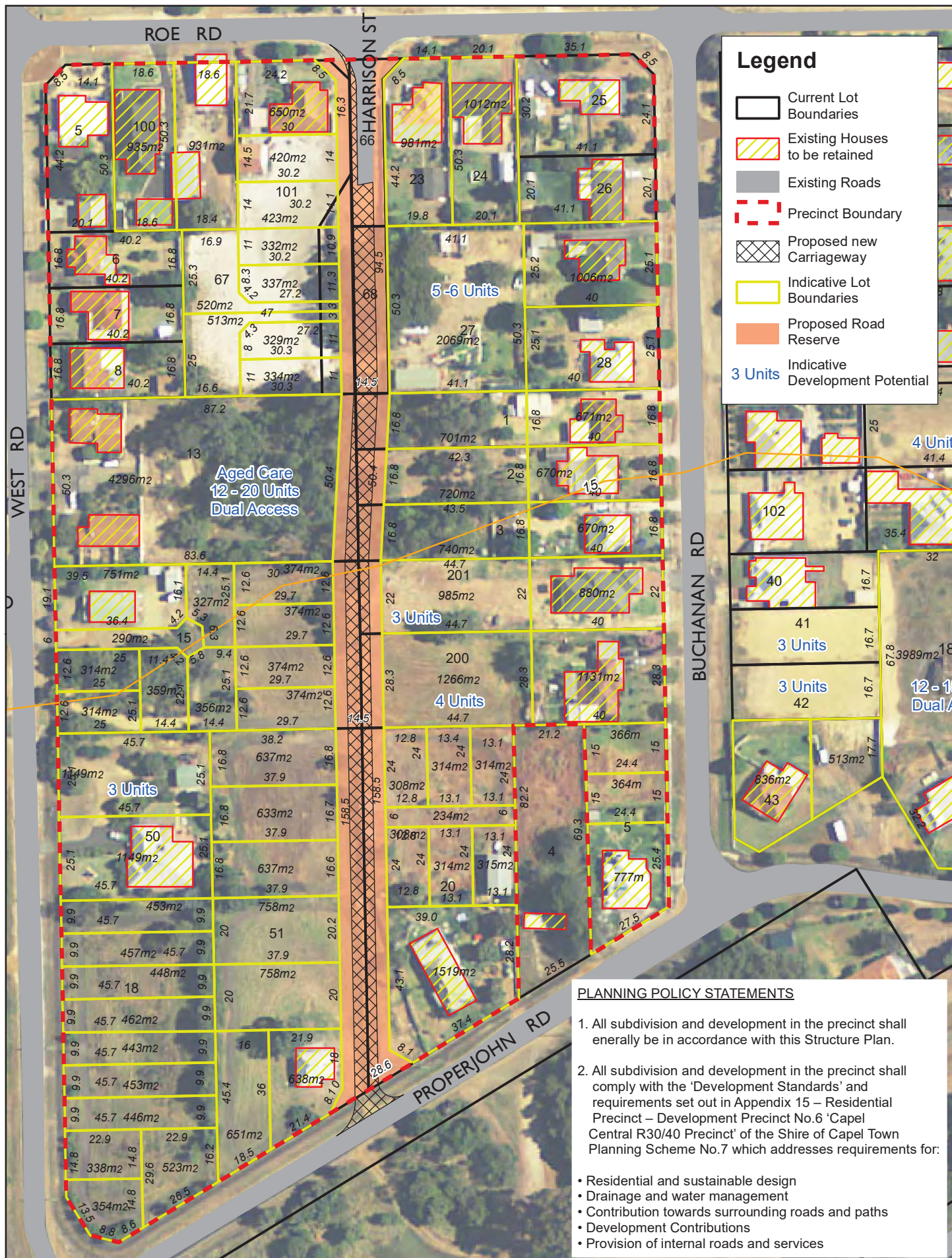
In accordance with Schedule 2, Part 4, Clause 28 (2) and refer to Part 1, 2. (b) of the *Planning and Development (Local Planning Schemes) Regulations 2015*.

Date of Expiry:

**19 OCTOBER 2027**







## Legend

- Current Lot Boundaries
- Existing Houses to be retained
- Existing Roads
- Precinct Boundary
- Proposed new Carriageway
- Indicative Lot Boundaries
- Proposed Road Reserve
- Indicative Development Potential

## PLANNING POLICY STATEMENTS

1. All subdivision and development in the precinct shall generally be in accordance with this Structure Plan.
2. All subdivision and development in the precinct shall comply with the 'Development Standards' and requirements set out in Appendix 15 – Residential Precinct – Development Precinct No.6 'Capel Central R30/40 Precinct' of the Shire of Capel Town Planning Scheme No.7 which addresses requirements for:
  - Residential and sustainable design
  - Drainage and water management
  - Contribution towards surrounding roads and paths
  - Development Contributions
  - Provision of internal roads and services





#### PLANNING POLICY STATEMENTS

1. All subdivision and development in the precinct shall generally be in accordance with this Structure Plan.
2. All subdivision and development in the precinct shall comply with the 'Development Standards' and requirements set out in Appendix 15 – Residential Precinct – Development Precinct No.6 'Capel Central R30/40 Precinct' of the Shire of Capel Town Planning Scheme No.7 which addresses requirements for:

- Residential and sustainable design
- Drainage and water management
- Contribution towards surrounding roads and paths
- Development Contributions
- Provision of internal roads and services

#### Legend

- |                                  |                           |
|----------------------------------|---------------------------|
| Current Lot Boundaries           | Precinct Boundary         |
| Existing Houses to be retained   | Proposed new Carriageway  |
| Existing Roads                   | Indicative Lot Boundaries |
| Indicative Development Potential | Proposed Road Reserve     |



## Capel Central Structure Plan Precinct 6C

Plan 5

