

## 2022/24 Perth and Peel Land Use and Employment Survey

### Manufacturing | Processing | Fabrication

This report summarises responses from the 2022/24 Land Use and Employment Survey for Perth and Peel. The Survey is part of an ongoing program monitoring development and employment trends in employment-generating land in Western Australia's urban centres. Information collected through the survey supports strategic land use planning, policy development/review and land use forecasting to inform infrastructure delivery. Survey coverage includes all land zoned for commercial, industrial, public purpose or recreation purposes across the Perth and Peel metropolitan area. Information is collected for the number and type of individual establishments, floorspace usage and the workforce associated with each activity undertaken at survey sites. These three main variables are coded according to the Western Australian Standard Land Use Classification codes and Planning Land Use Codes.

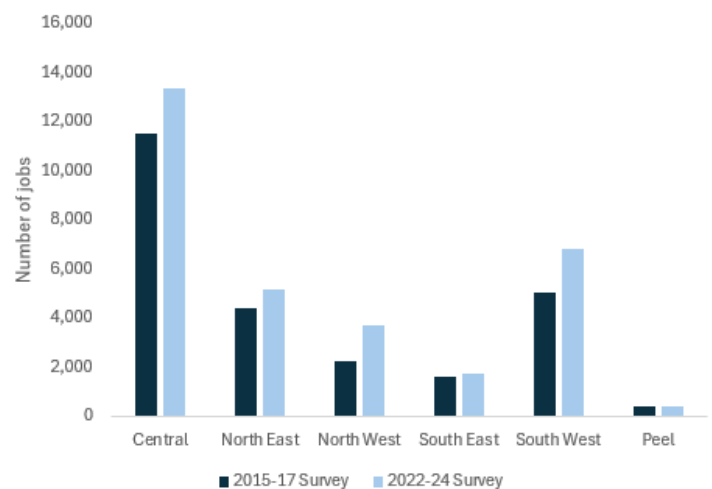
This report summarises the information captured under the Manufacturing | Processing | Fabrication Land Use Code, which includes uses for the purposes of manufacturing, processing and fabrication of general goods. This includes mill-ing, printing, and food production.

#### Employment

The 2022/24 Land Use and Employment Survey captured a total of close to 31,100 jobs in the Manufacturing | Processing | Fabrication Planning Land Use Code. Chemical manufacturing, ship building, and metal fabrication comprise a large proportion of the employment for this land use.

Manufacturing | Processing | Fabrication based employment increased by 24 per cent across Perth and Peel since the 2015/17 Survey.

#### Employment comparison



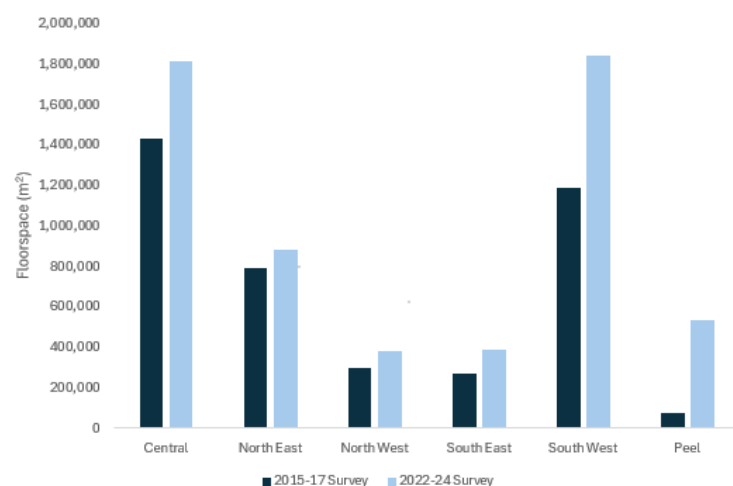
#### Floorspace

The 2022/24 Land Use and Employment Survey captured a total floorspace of close to 5,834,000m<sup>2</sup> within the Manufacturing | Processing | Fabrication Planning Land Use Code across the Perth and Peel regions.

A significant proportion of floorspace captured for this land use was attributed to large scale manufacturing spaces, which may not require large numbers of employees. Approximately 32 per cent of the captured floorspace was located within the Kwinana local government area in the South West sub-region.

Floorspace per employee ratios for Manufacturing | Processing | Fabrication land uses averaged 180m<sup>2</sup> across the metropolitan sub-regions, while the average was much higher in the Peel region. Larger scale manufacturing, including the marine sector, tended to be located in the southern sub-regions.

#### Floorspace comparison

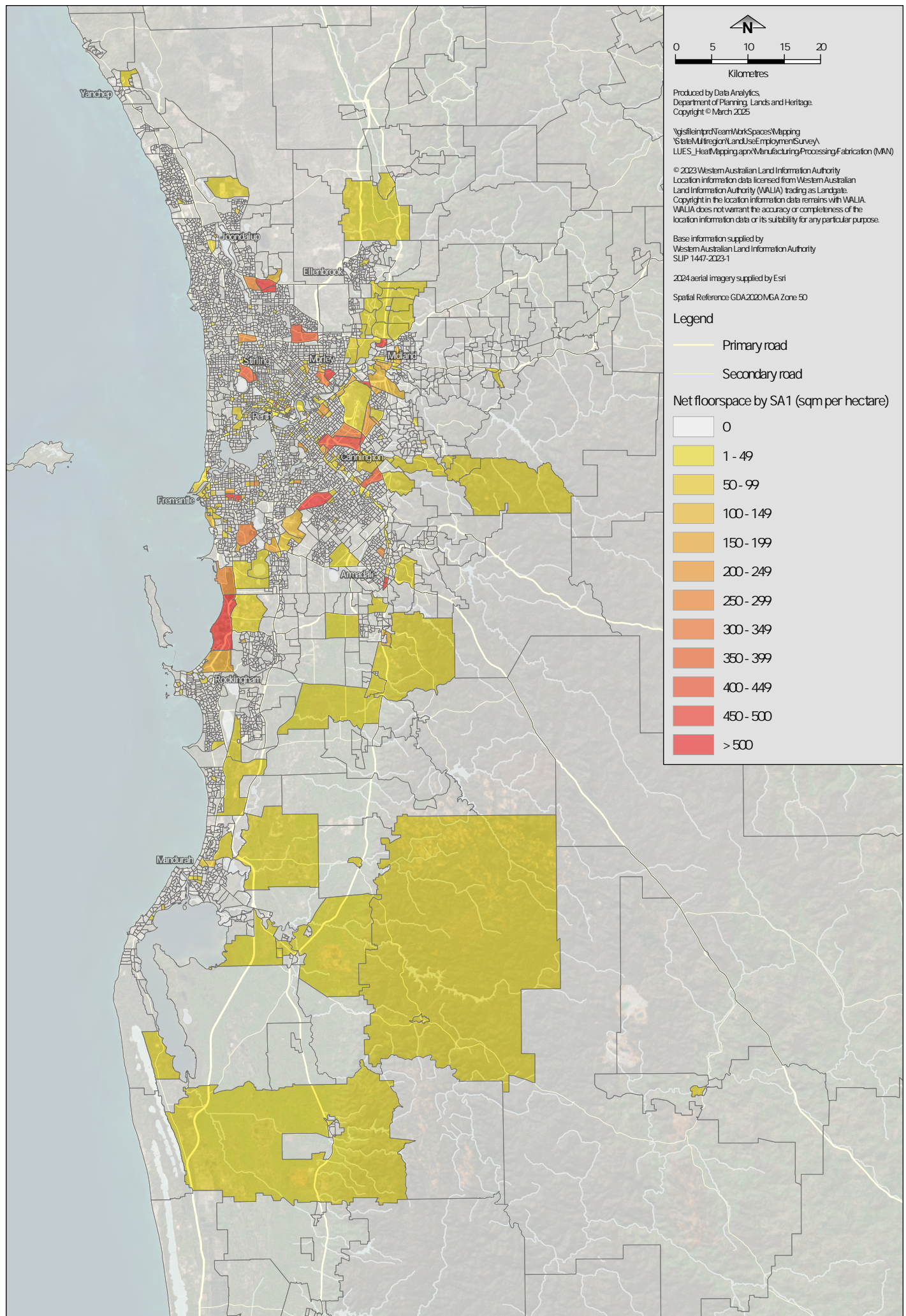


#### Floorspace per Employee



Sub-region	Central	North East	North West	South East	South West	Peel	Total
2015/17	125m <sup>2</sup>	178m <sup>2</sup>	132m <sup>2</sup>	170m <sup>2</sup>	233m <sup>2</sup>	228m <sup>2</sup>	178m <sup>2</sup>
2022/24	135m <sup>2</sup>	172m <sup>2</sup>	103m <sup>2</sup>	221m <sup>2</sup>	217m <sup>2</sup>	1317m <sup>2</sup>	370m <sup>2</sup>

# Land Use Employment Survey



**Manufacturing/Processing/Fabrication net floorspace density**