



# Kunawarritji Layout Plan 1 - Living Area Amendment 12

**Features**

production bore

**Land Administration**

cadastre

63

settlement layout (SL) lot & SL-lot number

**Exclusion Boundary** (see [Aboriginal Settlements Guideline](#))

drinking water source wellhead protection zone

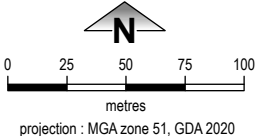
industry

no-go area

power station

**Land Use**

road reserve	road, essential service distribution network
residential	house, residential quarters
visitor camping	camping ground, traditional law and culture
community	child care premises, civic use, corrective institution, educational establishment, health care centre, worship building
open space	agriculture - extensive, essential service distribution network, traditional law and culture
rural	rural pursuit, agriculture - extensive, animal husbandry - intensive, agriculture - intensive, essential service distribution network
recreation	recreation, essential service distribution network
pedestrian access way	essential service distribution network, pedestrian access way
drinking water source protection area	any use permitted under the Drinking Water Source Protection Plan
waterway	agriculture - extensive, agriculture - intensive, traditional law and culture
commercial	art centre, caravan park, motel, office, service station, shop, tourism accommodation
industrial	fuel depot, industry, motor vehicle repair, storage, vehicle wrecking
public utility	electricity supply, essential service distribution network, drinking water supply, wastewater disposal, telecommunications, rubbish disposal



This Layout Plan does not constitute development approval. It is the responsibility of the developer to ensure that all relevant consents, approvals, licences and clearances are in place prior to commencing physical works on the site. Organisations responsible for such matters may include land owner, local government, incorporated community council, native title representative body, native title prescribed body corporate, Aboriginal Cultural Materials Committee, Environmental Protection Authority, state and federal government departments, and other relevant regulatory authorities. Go to the [PlanWA interactive planning map](#) to view Layout Plans with other spatial layers.

© 2023 Western Australian Land Information Authority Location information data licensed from Western Australian Land Information Authority (WALIA) trading as Landgate. Copyright in the location information data remains with WALIA. WALIA does not warrant the accuracy or completeness of the location information data or its suitability for any particular purpose. Base information and aerial imagery supplied by the Western Australian Land Information Authority SLIP 1447-2023-1. Cadastre date September 2025. May 2021 aerial image. Drinking water source protection area derived from the Kunawarritji Drinking Water Source Protection Plan May 2019, commissioned by the Dept. of Planning, Lands and Heritage.

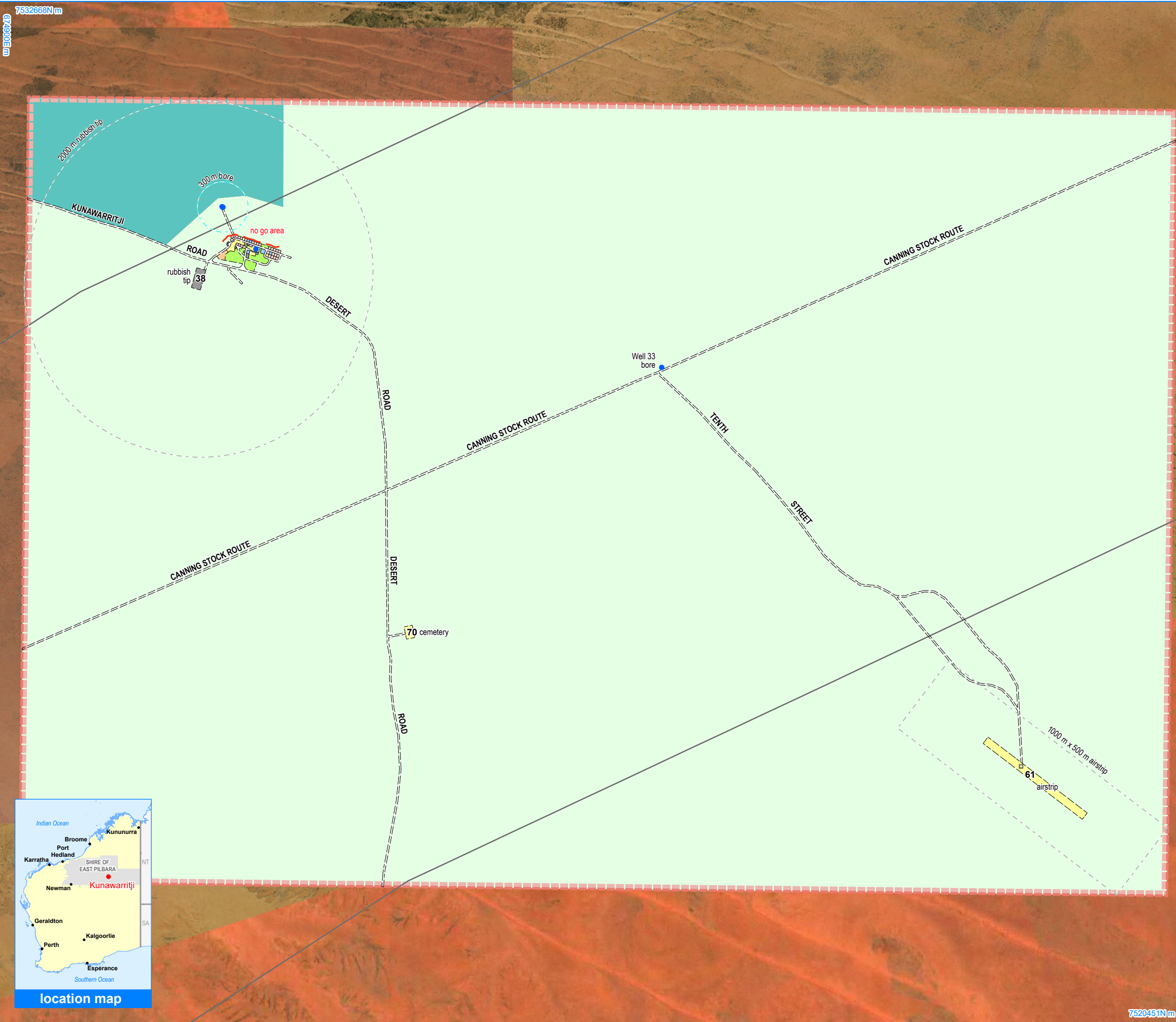
Settlement layout lots are not derived from calculated dimensions.

Map document : KunawarritjiLP1\_Amd12.aprx  
Produced by Data Analytics, Department of Planning, Lands & Heritage on behalf of the Western Australian Planning Commission.  
© Western Australian Planning Commission 2023



Layout Plan map-sets and background reports

Layout Plan 1 endorsement	
Community	19 March 2004
Local Government	18 May 2004
Traditional Owners	-
WAPC	4 May 2004
Amendment 12 endorsement	
WAPC	22 September 2025



7532668N m

673000E m

7520451N m

683165E m

# Kunawarritji Layout Plan 1 - Context Amendment 12

**Features**

- production bore

**Land Administration**

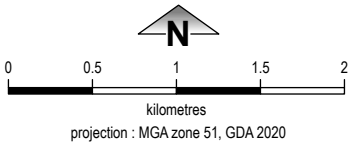
- cadastre
- lodged cadastre
- settlement zone
- settlement layout (SL) lot & SL-lot number

**Exclusion Boundary**

- drinking water source wellhead protection zone
- no-go area
- utility

**Land Use**

road reserve	road, essential service distribution network
residential	house, residential quarters
visitor camping	camping ground, traditional law and culture
community	child care premises, civic use, corrective institution, educational establishment, health care centre, worship building
open space	agriculture - extensive, essential service distribution network, traditional law and culture
rural	rural pursuit, agriculture - extensive, animal husbandry - intensive, agriculture - intensive, essential service distribution network
recreation	recreation, essential service distribution network
pedestrian access way	essential service distribution network, pedestrian access way
drinking water source protection area	any use permitted under the Drinking Water Source Protection Plan
waterway	agriculture - extensive, agriculture - intensive, traditional law and culture
commercial	art centre, caravan park, motel, office, service station, shop, tourism accommodation
industrial	fuel depot, industry, motor vehicle repair, storage, vehicle wrecking
public utility	electricity supply, essential service distribution network, drinking water supply, wastewater disposal, telecommunications, rubbish disposal



This Layout Plan does not constitute development approval. It is the responsibility of the developer to ensure that all relevant consents, approvals, licences and clearances are in place prior to commencing physical works on the site. Organisations responsible for such matters may include land owner, local government, incorporated community council, native title representative body, native title prescribed body corporate, Aboriginal Cultural Materials Committee, Environmental Protection Authority, state and federal government departments, and other relevant regulatory authorities. Go to the [PlanWA interactive planning map](#) to view Layout Plans with other spatial layers.

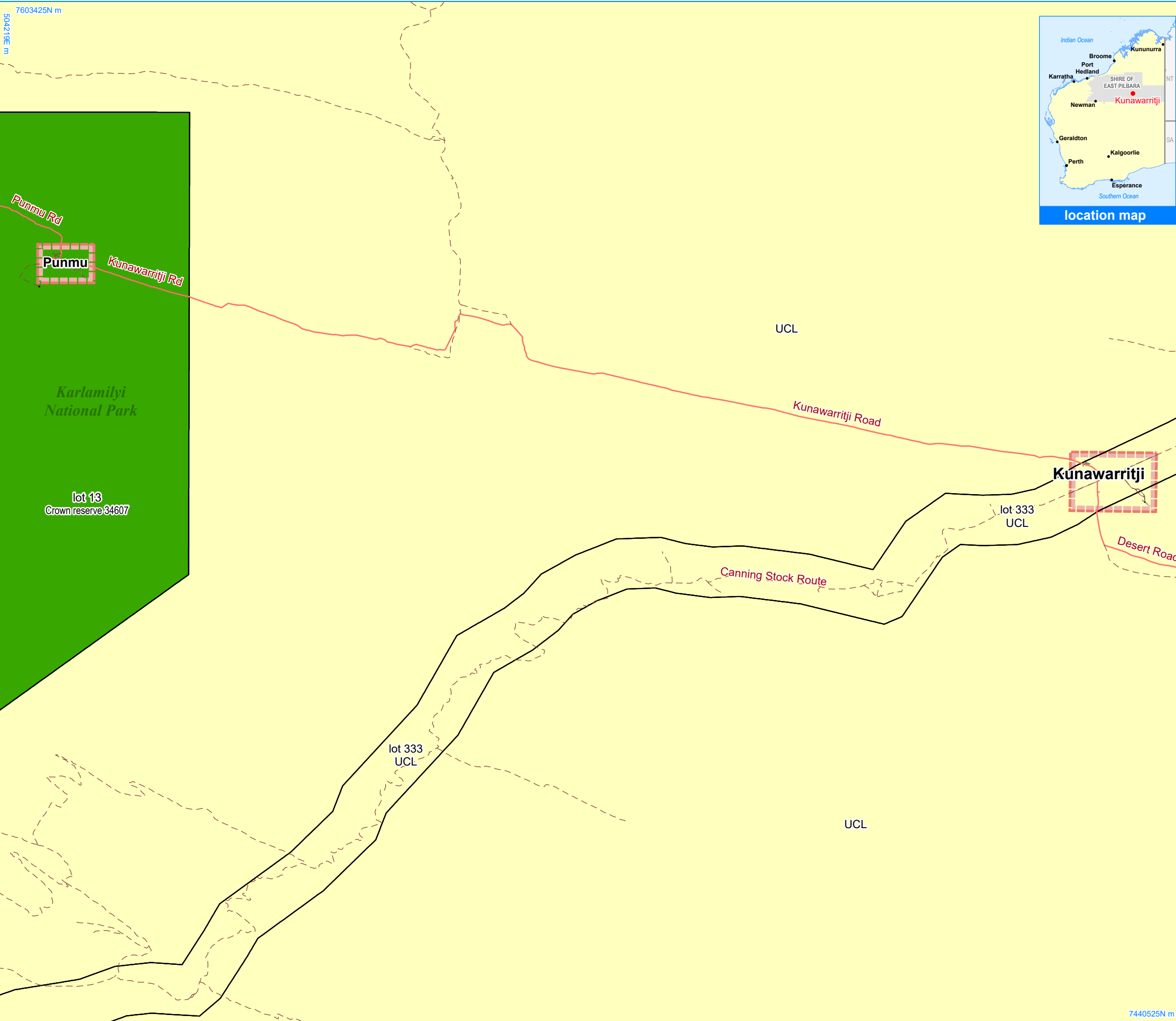
© 2023 Western Australian Land Information Authority Location information data licensed from Western Australian Land Information Authority (WALIA) trading as Landgate. Copyright in the location information data remains with WALIA. WALIA does not warrant the accuracy or completeness of the location information data or its suitability for any particular purpose. Base information and aerial imagery supplied by the Western Australian Land Information Authority SLIP 1447-2023-1. Cadastre date September 2025. May 2021 aerial image. Drinking water source protection area derived from the Kunawarritji Drinking Water Source Protection Plan May 2019, commissioned by the Dept. of Planning, Lands and Heritage. Settlement layout lots are not derived from calculated dimensions. Map document : KunawarritjiLP1\_Amd12.aprx Produced by Data Analytics, Department of Planning, Lands & Heritage on behalf of the Western Australian Planning Commission. © Western Australian Planning Commission 2023



Layout Plan 1 endorsement	
Community	19 March 2004
Local Government	18 May 2004
Traditional Owners	-
WAPC	4 May 2004
Amendment 12 endorsement	
WAPC	22 September 2025



location map



# Kunawarritji Layout Plan 1 - Land Tenure Amendment 12

## Land Tenure

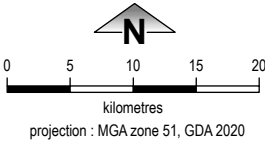
crown reserve	
crown reserve	- Aboriginal Lands Trust
Department of Biodiversity, Conservation & Attractions managed	
freehold	
leasehold	
other	
pastoral lease	
pastoral lease	- Aboriginal Lands Trust
unallocated crown land	
water reserve	

## Land Administration

	cadastre
	lodged cadastre
	recommended settlement zone
	settlement zone
	settlement layout (SL) lot

## Roads

	national highway
	state highway
	major road
	minor road
	track



This Layout Plan does not constitute development approval. It is the responsibility of the developer to ensure that all relevant consents, approvals, licences and clearances are in place prior to commencing physical works on the site. Organisations responsible for such matters may include land owner, local government, incorporated community council, native title representative body, native title prescribed body corporate, Aboriginal Cultural Materials Committee, Environmental Protection Authority, state and federal government departments, and other relevant regulatory authorities. Go to the [PlanWA interactive planning map](#) to view Layout Plans with other spatial layers.

© 2023 Western Australian Land Information Authority Location information data licensed from Western Australian Land Information Authority (WALIA) trading as Landgate. Copyright in the location information data remains with WALIA. WALIA does not warrant the accuracy or completeness of the location information data or its suitability for any particular purpose. Base information and aerial imagery supplied by the Western Australian Land Information Authority SLIP 1447-2023-1. Cadastre date September 2025.

Settlement layout lots are not derived from calculated dimensions.

Map document : KunawarritjiLP1\_Amd12.aprx  
Produced by Data Analytics, Department of Planning, Lands & Heritage on behalf of the Western Australian Planning Commission.  
© Western Australian Planning Commission 2023



**WAPC** Western Australian Planning Commission

Layout Plan 1 endorsement	
Community	19 March 2004
Local Government	18 May 2004
Traditional Owners	-
WAPC	4 May 2004
Amendment 12 endorsement	
WAPC	22 September 2025